



Western Water & Land, Inc.

April 26, 2013

Mr. Brandon Danforth
Environmental Specialist
WPX Energy Rocky Mountain LLC
1058 County Road 215
Parachute, Colorado 81635

RE: Baseline Water Quality Sampling Evaluation – DOE 1-W-27 Drill Pad

Dear Mr. Danforth,

Western Water & Land, Inc. (WWL) has completed a hydrologic water source evaluation for the WPX Energy Rocky Mountain LLC (WPX) DOE 1-W-27 Drill Pad in accordance with COGCC Rule 609. The evaluation considered all water sources as defined in Rule 609 within a 0.5-mile radius of the referenced drill pad. Water sources located on the basis of section quarters were included in the evaluation if any portion of the section quarter(s) lies within the 0.5-mile radius area. A preliminary screening of the water sources was completed to identify the sources considered to be potentially available for sampling pending results of the owner questionnaire and field inspections to verify sampling feasibility and the consent of the structure owners. Each potentially available water source was then evaluated to identify the preferred sources for the baseline program. If the resulting number of potentially available sources was four or less, all of the sources were included in the list of preferred sources. If more than four sources were potentially available, the sources were prioritized based on WWL's hydrologic knowledge of the region, general hydrologic rationale, and in accordance with the guidelines specified in Rule 609.

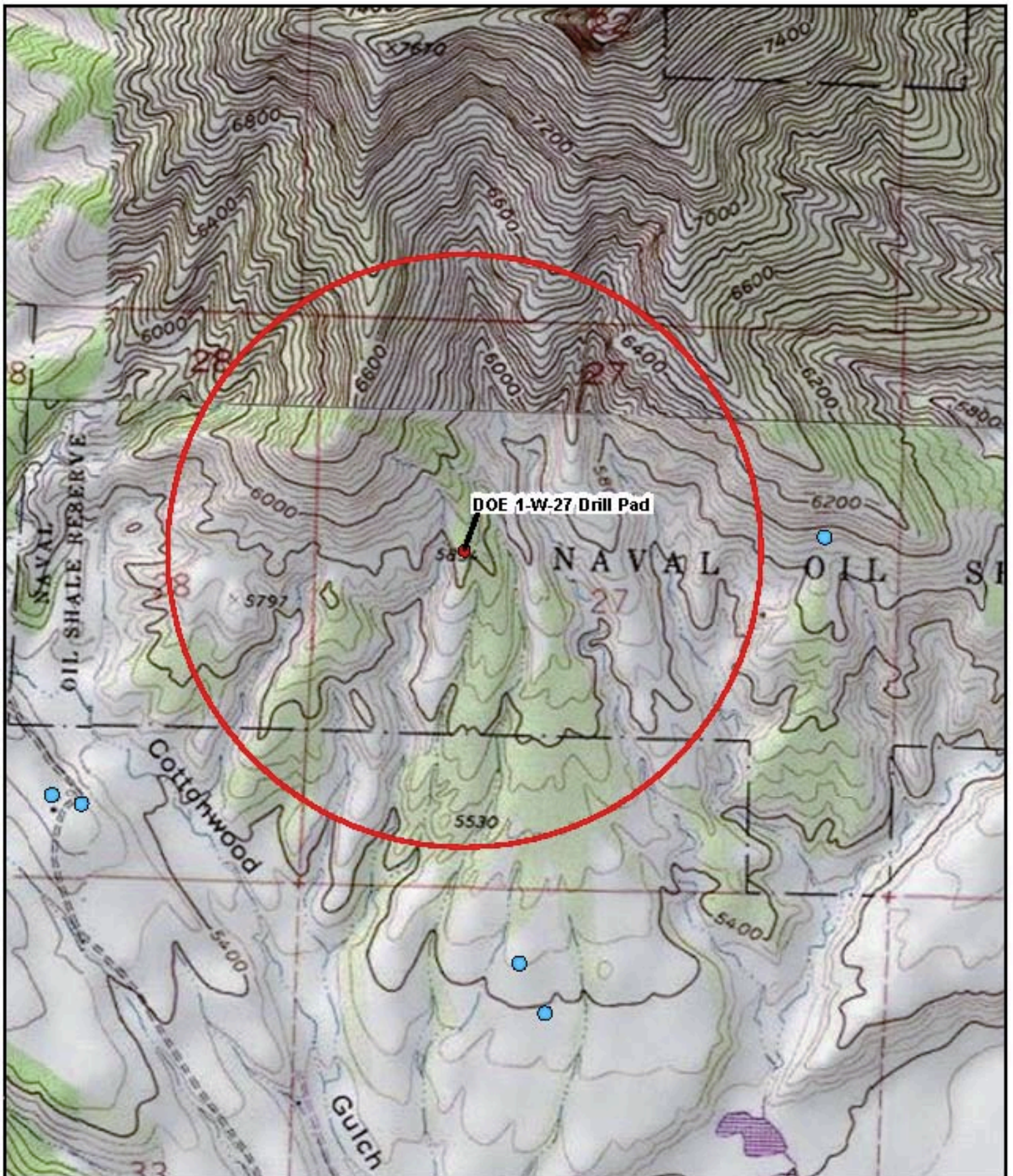
Water Sources

Water sources as defined in Rule 609 include water wells registered with the Colorado Division of Water Resources (DWR), permitted or adjudicated springs, and monitoring wells installed for baseline sampling and monitoring under COGCC Rules 318A.e(4), 608, or 609. Water sources located within a 0.5-mile radius of the DOE 1-W-27 Drill Pad are shown in Figure 1. No water sources were identified to fall within the 0.5-mile radius area.

If you have any questions or concerns, please contact me at (970) 242-0170.

Sincerely,

Bruce D. Smith
Principal Hydrogeologist
WESTERN WATER & LAND, INC.
Attachments
Figure 1



Legend

- Permitted Well
- Decreed Spring
- Center of Pad DOE 1-W-27
- 0.5-Mile Radius Evaluation Area

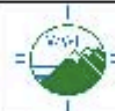


Feet
1,000 500 0 1,000

Basemap Source: USGS TO PO, NGS (2007), and Esri ArcGIS Online

Figure 1: DOE 1-W-27 Drill Pad
0.5 Mile Radius Water Source Evaluation
WPX Energy Rocky Mountain LLC

Garfield County, Colorado



Western Waters to Land for
Conservation