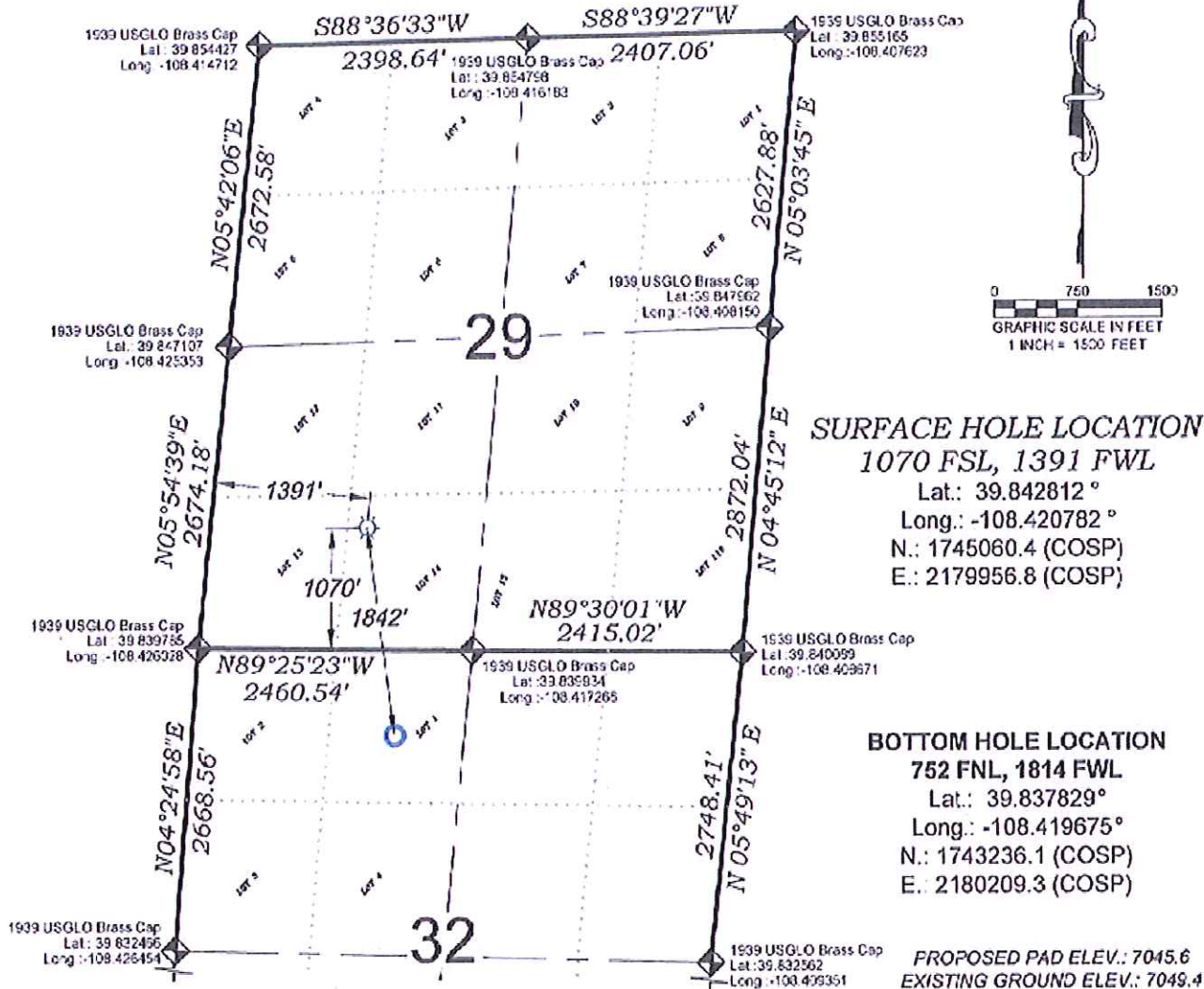


Federal RG 421-32-298



SEE CONSTRUCTION LAYOUT
 PLAT FOR VISIBLE IMPROVEMENTS
 WITHIN 400' OF THIS LOCATION

SURVEYORS STATEMENT

I, MICHAEL J. LANGHORNE, A REGISTERED LAND SURVEYOR IN THE STATE OF COLORADO DO HEREBY CERTIFY THAT THE SURVEY SHOWN HEREON WAS PREPARED UNDER MY DIRECT SUPERVISION AND HAS BEEN STAKED ON THE GROUND AS SHOWN ON THE PLAT AND CHECKING THAT THIS MAP IS A TRUE REPRESENTATION THEREOF.

MICHAEL J. LANGHORNE, COLORADO REGISTRATION NO. 36572
 FOR AND ON BEHALF OF
 BOOKCLIFF SURVEY SERVICES, INC.

REFERENCES

- 1) 1537 Dependent Resurvey T. 2 S., R. 98 W., 6th P.M (GLO PLAT)
- 2) U.S.G.S. QUAD: Yankee Gulch, CO

REVISED: 7/11/13

SURVEY DATE: 6/25/13
 MAP DATE: 6/26/13
 SCALE: 1" = 1500'
 PLAT: 1 of 1
 PROJECT: Highlands

136 East Third Street
 Rifle, Colorado
 81650 Ph. (970)
 625-2726 Fax (970)
 625-2773



BOOKCLIFF
 Survey Services, Inc.

- LEGEND -

FIELD LOCATED SECTION
 MONUMENTS AS DESCRIBED



FIELD SURVEYED
 WELL LOCATION



CALCULATED BOTTOM
 HOLE LOCATION



CALCULATED SECTION
 CORNER LOCATION



NOTES

- 1) ELEVATIONS BASED ON N.A.V.D. 1988 PUBLISHED COORDINATES.
- 2) LATITUDES AND LONGITUDES ARE BASED ON NAD 83, PUBLISHED COORDINATES.
- 3) STATE PLANE COORDINATES ARE BASED ON COLORADO CENTRAL ZONE, U.S. SURVEY FEET.
- 4) ELEVATION MASK SET TO 15"
- 5) GPS OPERATOR J. KIRKPATRICK, OBSERVED A PDOP OF 2.3 FOR SURVEY POINT NUMBER 505.
- 6) SURFACE AND BOTTOM HOLE LOCATIONS ARE MEASURED 50' FROM SECTION LINES.

WELL LOCATION PLAT Prepared for:
WPXENERGY WPX Energy Rocky Mountain, LLC

SE1/4 SW1/4, SECTION 29
 T. 2 S., R. 98 W. of the 6th. P.M.
 RIO BLANCO COUNTY, COLORADO