

FORMATION TOP DETAILS

No formation data is available

Azimuths to True North
Magnetic North: 10.22°

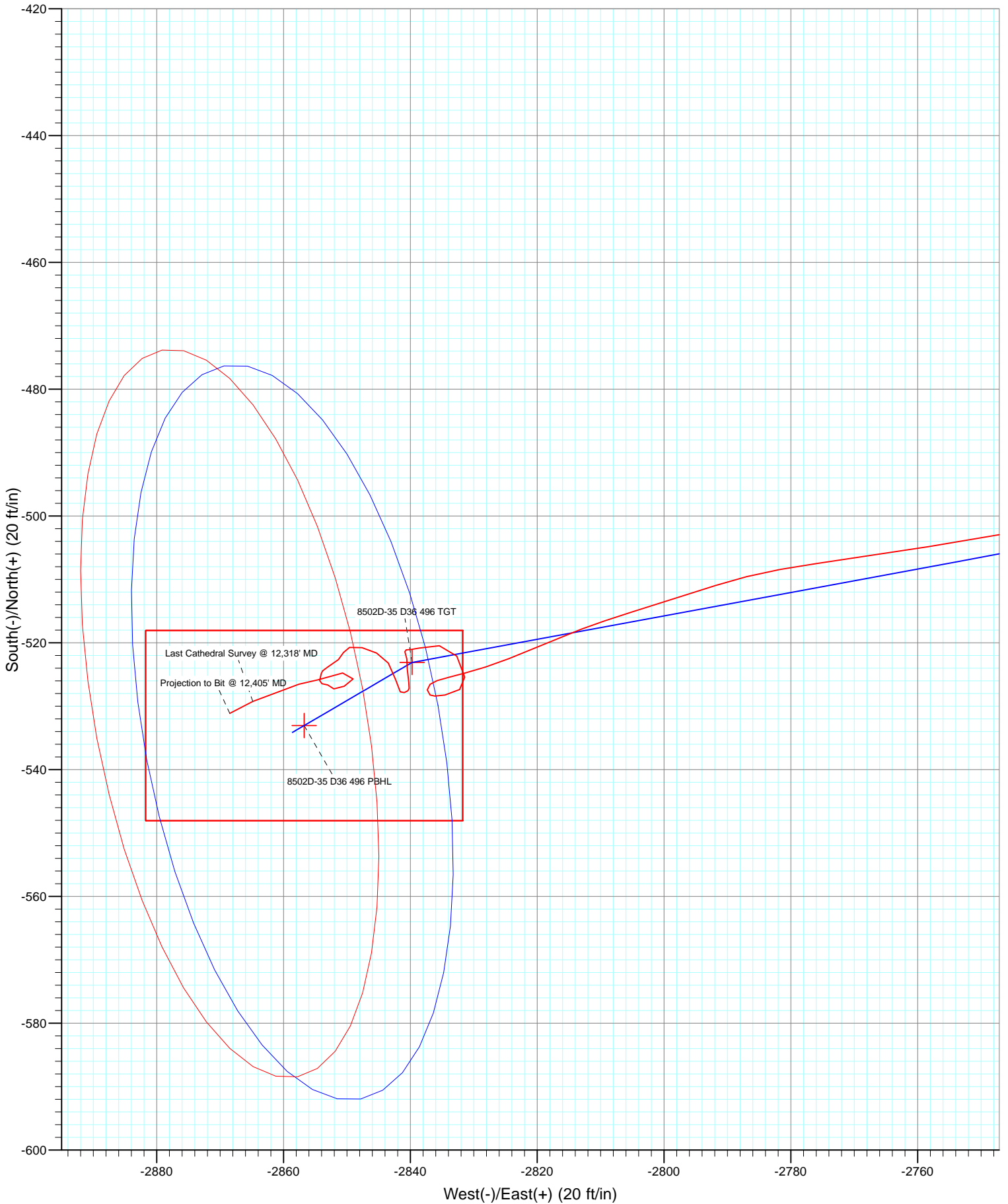
Magnetic Field
Strength: 52144.5nT
Dip Angle: 65.81°
Date: 1/23/2013
Model: IGRF2010

FINAL
 8502D-35 (was 8513B-25)
 125487/184955 (SH) 135030/206955 (MH); SC
 KB = 32' @ 8323.0ft (Patterson 326)
 GL @ 8291.0
 North American Datum 1983
 Well 8502D-35 (was 8513B-25), True North

Type	Target	Azimuth	Origin	Type	N/S	E/W	From TVD
User	No Target (Freehand)	259.54	Slot	Slot	0.0	0.0	0.0
		TVD	+N/-S	+E/-W	Latitude	Longitude	
8502D-35 D36 496 TGT		7914.0	-523.1	-2839.7	39° 39' 49.01 N	108° 7' 58.44 W	
8502D-35 D36 496 PBHL		12504.0	-533.1	-2856.7	39° 39' 48.91 N	108° 7' 58.66 W	



Project: Story Gulch
Site: S36-T4S-R96W (D36 496)
Well: 8502D-35 (was 8513B-25)
Wellbore: DD
Design: FINAL



Cathedral Energy Services

Survey Report

Company: EnCana Oil & Gas (USA) Inc	Local Co-ordinate Reference: Well 8502D-35 (was 8513B-25)
Project: Story Gulch	TVD Reference: KB = 32' @ 8323.0ft (Patterson 326)
Site: S36-T4S-R96W (D36 496)	MD Reference: KB = 32' @ 8323.0ft (Patterson 326)
Well: 8502D-35 (was 8513B-25)	North Reference: True
Wellbore: DD	Survey Calculation Method: Minimum Curvature
Design: FINAL	Database: USA EDM 5000 Multi Users DB

Project Story Gulch		
Map System: US State Plane 1983	System Datum:	Mean Sea Level
Geo Datum: North American Datum 1983		
Map Zone: Colorado Central Zone		

Site S36-T4S-R96W (D36 496)			
Site Position:	Northing: 1,677,701.75 ft	Latitude:	39° 39' 53.35 N
From: Lat/Long	Easting: 2,261,687.16 ft	Longitude:	108° 7' 22.59 W
Position Uncertainty: 0.0 ft	Slot Radius: 13.200 in	Grid Convergence:	-1.65 °

Well 8502D-35 (was 8513B-25)			
Well Position	+N/-S 0.0 ft	Northing: 1,677,784.63 ft	Latitude: 39° 39' 54.18 N
	+E/-W 0.0 ft	Easting: 2,261,725.55 ft	Longitude: 108° 7' 22.13 W
Position Uncertainty	0.0 ft	Wellhead Elevation: ft	Ground Level: 8,291.0 ft

Wellbore DD					
Magnetics	Model Name	Sample Date	Declination (°)	Dip Angle (°)	Field Strength (nT)
	IGRF2010	1/23/2013	10.22	65.81	52,145

Design FINAL				
Audit Notes:				
Version: 1.0	Phase: ACTUAL	Tie On Depth:	0.0	
Vertical Section:	Depth From (TVD) (ft)	+N/-S (ft)	+E/-W (ft)	Direction (°)
	0.0	0.0	0.0	259.54

Survey Program		Date 2/4/2013
From (ft)	To (ft)	Survey (Wellbore)
179.0	12,405.0	Survey #1 (DD)
		Tool Name MWD
		Description Geolink MWD

Measured Depth (ft)	Inclination (°)	Azimuth (°)	Vertical Depth (ft)	+N/-S (ft)	+E/-W (ft)	Vertical Section (ft)	Dogleg Rate (°/100ft)	Build Rate (°/100ft)	Formations / Comments
0.0	0.00	0.00	0.0	0.0	0.0	0.0	0.00	0.00	
179.0	0.70	97.80	179.0	-0.1	1.1	-1.0	0.39	0.39	
209.0	0.60	92.10	209.0	-0.2	1.4	-1.4	0.40	-0.33	
239.0	0.30	67.10	239.0	-0.2	1.7	-1.6	1.17	-1.00	
269.0	0.60	324.20	269.0	0.0	1.6	-1.6	2.43	1.00	
300.0	1.40	307.20	300.0	0.4	1.2	-1.3	2.72	2.58	
329.0	2.10	294.20	329.0	0.8	0.5	-0.6	2.76	2.41	
360.0	2.80	287.60	359.9	1.3	-0.8	0.5	2.43	2.26	
390.0	3.60	284.00	389.9	1.7	-2.4	2.0	2.75	2.67	
420.0	4.40	276.50	419.8	2.1	-4.4	4.0	3.18	2.67	
451.0	5.10	277.00	450.7	2.4	-7.0	6.4	2.26	2.26	
481.0	6.10	272.50	480.6	2.6	-9.9	9.3	3.64	3.33	
514.0	6.90	272.90	513.4	2.8	-13.6	12.9	2.43	2.42	

Cathedral Energy Services

Survey Report

Company:	EnCana Oil & Gas (USA) Inc	Local Co-ordinate Reference:	Well 8502D-35 (was 8513B-25)
Project:	Story Gulch	TVD Reference:	KB = 32' @ 8323.0ft (Patterson 326)
Site:	S36-T4S-R96W (D36 496)	MD Reference:	KB = 32' @ 8323.0ft (Patterson 326)
Well:	8502D-35 (was 8513B-25)	North Reference:	True
Wellbore:	DD	Survey Calculation Method:	Minimum Curvature
Design:	FINAL	Database:	USA EDM 5000 Multi Users DB

Survey									
Measured Depth (ft)	Inclination (°)	Azimuth (°)	Vertical Depth (ft)	+N/-S (ft)	+E/-W (ft)	Vertical Section (ft)	Dogleg Rate (°/100ft)	Build Rate (°/100ft)	Formations / Comments
544.0	7.80	276.90	543.1	3.1	-17.5	16.6	3.45	3.00	
574.0	8.60	274.20	572.8	3.5	-21.7	20.7	2.96	2.67	
604.0	9.60	270.30	602.4	3.7	-26.5	25.3	3.91	3.33	
636.0	10.30	270.30	634.0	3.7	-32.0	30.8	2.19	2.19	
666.0	10.90	265.90	663.4	3.5	-37.5	36.2	3.36	2.00	
697.0	11.70	262.50	693.8	2.9	-43.5	42.3	3.36	2.58	
727.0	12.40	258.70	723.2	1.9	-49.7	48.5	3.53	2.33	
757.0	13.20	258.90	752.4	0.6	-56.2	55.2	2.67	2.67	
789.0	14.60	259.20	783.5	-0.9	-63.8	62.9	4.38	4.37	
819.0	15.60	258.90	812.5	-2.3	-71.5	70.7	3.34	3.33	
850.0	16.70	259.40	842.2	-4.0	-79.9	79.3	3.58	3.55	
881.0	17.40	257.40	871.9	-5.8	-88.8	88.4	2.95	2.26	
912.0	18.60	257.30	901.4	-7.9	-98.2	98.0	3.87	3.87	
943.0	19.80	255.80	930.6	-10.3	-108.1	108.1	4.18	3.87	
973.0	20.90	255.80	958.8	-12.8	-118.2	118.6	3.67	3.67	
1,064.0	24.10	255.90	1,042.8	-21.3	-152.0	153.3	3.52	3.52	
1,156.0	24.20	259.40	1,126.8	-29.4	-188.7	190.9	1.56	0.11	
1,248.0	25.40	260.80	1,210.3	-36.0	-226.7	229.5	1.45	1.30	
1,339.0	25.40	260.30	1,292.5	-42.4	-265.2	268.5	0.24	0.00	
1,431.0	25.70	261.60	1,375.5	-48.7	-304.4	308.2	0.69	0.33	
1,523.0	25.40	258.70	1,458.5	-55.4	-343.5	347.9	1.40	-0.33	
1,614.0	24.90	258.00	1,540.9	-63.2	-381.4	386.5	0.64	-0.55	
1,706.0	25.40	258.70	1,624.2	-71.1	-419.7	425.6	0.63	0.54	
1,797.0	25.30	259.50	1,706.4	-78.5	-457.9	464.6	0.39	-0.11	
1,889.0	24.30	258.00	1,789.9	-86.0	-495.8	503.2	1.28	-1.09	
1,981.0	22.80	256.80	1,874.2	-94.0	-531.6	539.9	1.71	-1.63	
2,072.0	22.60	255.40	1,958.2	-102.5	-565.7	574.9	0.63	-0.22	
2,164.0	22.20	257.40	2,043.3	-110.7	-599.8	609.9	0.94	-0.43	
2,255.0	21.40	259.30	2,127.7	-117.5	-632.9	643.7	1.17	-0.88	
2,347.0	21.40	259.00	2,213.4	-123.9	-665.9	677.3	0.12	0.00	
2,438.0	21.00	257.80	2,298.2	-130.5	-698.1	710.2	0.65	-0.44	
2,530.0	20.10	257.40	2,384.4	-137.4	-729.6	742.5	0.99	-0.98	
2,622.0	19.70	259.20	2,470.9	-143.8	-760.3	773.8	0.80	-0.43	
2,713.0	20.00	260.30	2,556.5	-149.3	-790.7	804.7	0.53	0.33	
2,804.0	20.30	261.00	2,641.9	-154.3	-821.6	836.0	0.42	0.33	
2,896.0	19.30	261.00	2,728.5	-159.2	-852.4	867.2	1.09	-1.09	
2,956.0	18.60	261.00	2,785.2	-162.3	-871.7	886.6	1.17	-1.17	
3,071.0	17.10	256.00	2,894.7	-169.2	-906.2	921.8	1.86	-1.30	
3,162.0	17.30	263.30	2,981.6	-174.0	-932.6	948.7	2.38	0.22	
3,254.0	18.30	265.50	3,069.2	-176.8	-960.6	976.7	1.31	1.09	
3,345.0	23.10	266.20	3,154.3	-179.1	-992.7	1,008.7	5.28	5.27	
3,437.0	25.50	261.90	3,238.2	-183.1	-1,030.3	1,046.4	3.24	2.61	
3,528.0	25.40	261.50	3,320.3	-188.7	-1,069.0	1,085.5	0.22	-0.11	
3,619.0	26.10	258.20	3,402.3	-195.7	-1,107.9	1,125.0	1.75	0.77	
3,711.0	24.00	255.90	3,485.7	-204.4	-1,145.8	1,163.9	2.52	-2.28	
3,802.0	24.60	258.70	3,568.6	-212.6	-1,182.4	1,201.3	1.43	0.66	
3,893.0	24.80	258.70	3,651.3	-220.1	-1,219.7	1,239.3	0.22	0.22	
3,985.0	26.90	258.70	3,734.1	-227.9	-1,259.0	1,279.4	2.28	2.28	
4,076.0	23.70	254.80	3,816.3	-236.8	-1,296.8	1,318.3	3.96	-3.52	
4,168.0	23.80	255.20	3,900.5	-246.3	-1,332.6	1,355.2	0.21	0.11	
4,259.0	25.20	259.00	3,983.3	-254.7	-1,369.4	1,392.9	2.32	1.54	
4,351.0	26.30	258.60	4,066.2	-262.5	-1,408.6	1,432.9	1.21	1.20	
4,443.0	24.10	257.20	4,149.5	-270.7	-1,446.9	1,472.0	2.48	-2.39	

Cathedral Energy Services

Survey Report

Company:	EnCana Oil & Gas (USA) Inc	Local Co-ordinate Reference:	Well 8502D-35 (was 8513B-25)
Project:	Story Gulch	TVD Reference:	KB = 32' @ 8323.0ft (Patterson 326)
Site:	S36-T4S-R96W (D36 496)	MD Reference:	KB = 32' @ 8323.0ft (Patterson 326)
Well:	8502D-35 (was 8513B-25)	North Reference:	True
Wellbore:	DD	Survey Calculation Method:	Minimum Curvature
Design:	FINAL	Database:	USA EDM 5000 Multi Users DB

Survey									
Measured Depth (ft)	Inclination (°)	Azimuth (°)	Vertical Depth (ft)	+N/-S (ft)	+E/-W (ft)	Vertical Section (ft)	Dogleg Rate (°/100ft)	Build Rate (°/100ft)	Formations / Comments
4,534.0	26.00	258.90	4,231.9	-278.6	-1,484.6	1,510.5	2.23	2.09	
4,626.0	25.10	259.20	4,314.9	-286.2	-1,523.6	1,550.2	0.99	-0.98	
4,717.0	25.50	260.60	4,397.2	-293.0	-1,561.8	1,589.1	0.79	0.44	
4,809.0	25.30	261.10	4,480.3	-299.3	-1,600.8	1,628.5	0.32	-0.22	
4,901.0	26.20	260.20	4,563.1	-305.8	-1,640.2	1,668.5	1.07	0.98	
4,992.0	24.30	257.60	4,645.4	-313.2	-1,678.3	1,707.3	2.42	-2.09	
5,084.0	25.60	262.20	4,728.9	-320.0	-1,716.5	1,746.1	2.54	1.41	
5,176.0	23.60	262.10	4,812.5	-325.2	-1,754.4	1,784.3	2.17	-2.17	
5,267.0	25.60	263.80	4,895.2	-329.8	-1,792.0	1,822.1	2.33	2.20	
5,359.0	24.40	262.40	4,978.6	-334.5	-1,830.6	1,860.9	1.45	-1.30	
5,451.0	22.90	262.10	5,062.9	-339.5	-1,867.2	1,897.8	1.64	-1.63	
5,542.0	24.30	263.00	5,146.3	-344.2	-1,903.3	1,934.2	1.59	1.54	
5,634.0	22.80	261.50	5,230.6	-349.1	-1,939.7	1,970.9	1.76	-1.63	
5,726.0	24.10	262.90	5,315.0	-354.1	-1,976.0	2,007.5	1.54	1.41	
5,817.0	22.80	262.60	5,398.5	-358.7	-2,011.9	2,043.6	1.43	-1.43	
5,909.0	24.30	262.60	5,482.8	-363.4	-2,048.4	2,080.3	1.63	1.63	
6,001.0	25.30	259.90	5,566.3	-369.3	-2,086.5	2,118.9	1.64	1.09	
6,092.0	23.10	258.60	5,649.3	-376.2	-2,123.2	2,156.2	2.49	-2.42	
6,184.0	24.60	257.80	5,733.5	-383.8	-2,159.6	2,193.4	1.67	1.63	
6,275.0	22.30	256.80	5,817.0	-391.8	-2,194.9	2,229.6	2.56	-2.53	
6,366.0	23.00	257.20	5,900.9	-399.7	-2,229.1	2,264.6	0.79	0.77	
6,458.0	25.00	257.60	5,985.0	-407.8	-2,265.6	2,302.0	2.18	2.17	
6,550.0	22.90	257.00	6,069.1	-416.0	-2,302.0	2,339.3	2.30	-2.28	
6,642.0	23.60	258.90	6,153.6	-423.6	-2,337.5	2,375.6	1.12	0.76	
6,733.0	21.70	258.70	6,237.6	-430.4	-2,371.9	2,410.6	2.09	-2.09	
6,824.0	20.70	260.60	6,322.4	-436.3	-2,404.3	2,443.5	1.33	-1.10	
6,916.0	20.80	260.40	6,408.4	-441.7	-2,436.4	2,476.1	0.13	0.11	
7,008.0	21.10	261.80	6,494.4	-446.8	-2,468.9	2,509.0	0.63	0.33	
7,099.0	23.20	262.00	6,578.6	-451.6	-2,502.9	2,543.3	2.31	2.31	
7,191.0	24.30	258.00	6,662.9	-458.1	-2,539.3	2,580.3	2.12	1.20	
7,283.0	22.50	257.40	6,747.3	-465.8	-2,575.0	2,616.8	1.97	-1.96	
7,375.0	20.90	256.30	6,832.8	-473.6	-2,608.2	2,650.8	1.79	-1.74	
7,466.0	19.30	257.00	6,918.2	-480.8	-2,638.6	2,682.0	1.78	-1.76	
7,557.0	18.40	256.20	7,004.3	-487.6	-2,667.2	2,711.4	1.03	-0.99	
7,649.0	15.70	259.60	7,092.3	-493.3	-2,693.5	2,738.3	3.13	-2.93	
7,741.0	14.90	259.40	7,181.0	-497.7	-2,717.4	2,762.6	0.87	-0.87	
7,832.0	12.90	260.40	7,269.4	-501.6	-2,738.9	2,784.5	2.21	-2.20	
7,924.0	11.70	260.60	7,359.2	-504.8	-2,758.2	2,804.1	1.31	-1.30	
8,015.0	11.10	262.20	7,448.4	-507.5	-2,776.0	2,822.0	0.75	-0.66	
8,107.0	9.20	252.40	7,539.0	-510.9	-2,791.8	2,838.2	2.78	-2.07	
8,198.0	8.60	252.50	7,628.9	-515.2	-2,805.2	2,852.2	0.66	-0.66	
8,290.0	5.90	247.00	7,720.2	-519.1	-2,816.2	2,863.6	3.03	-2.93	
8,381.0	5.40	248.80	7,810.7	-522.5	-2,824.5	2,872.4	0.58	-0.55	
8,472.0	3.80	255.70	7,901.4	-524.8	-2,831.4	2,879.6	1.86	-1.76	
8,484.9	3.53	255.51	7,914.3	-525.0	-2,832.2	2,880.4	2.07	-2.07	8502D-35 D36 496 TGT
8,564.0	1.90	253.20	7,993.3	-526.0	-2,835.8	2,884.1	2.07	-2.06	
8,655.0	1.30	185.00	8,084.3	-527.4	-2,837.3	2,885.9	2.05	-0.66	
8,746.0	0.70	65.80	8,175.3	-528.2	-2,836.9	2,885.7	1.92	-0.66	
8,837.0	0.60	145.10	8,266.3	-528.4	-2,836.1	2,884.9	0.92	-0.11	
8,929.0	1.80	66.80	8,358.3	-528.2	-2,834.5	2,883.3	1.93	1.30	
9,020.0	1.30	74.10	8,449.2	-527.4	-2,832.2	2,880.9	0.59	-0.55	
9,112.0	2.10	353.20	8,541.2	-525.4	-2,831.4	2,879.7	2.49	0.87	
9,203.0	2.50	327.20	8,632.1	-522.1	-2,832.7	2,880.4	1.21	0.44	

Cathedral Energy Services

Survey Report

Company: EnCana Oil & Gas (USA) Inc	Local Co-ordinate Reference: Well 8502D-35 (was 8513B-25)
Project: Story Gulch	TVD Reference: KB = 32' @ 8323.0ft (Patterson 326)
Site: S36-T4S-R96W (D36 496)	MD Reference: KB = 32' @ 8323.0ft (Patterson 326)
Well: 8502D-35 (was 8513B-25)	North Reference: True
Wellbore: DD	Survey Calculation Method: Minimum Curvature
Design: FINAL	Database: USA EDM 5000 Multi Users DB

Survey									
Measured Depth (ft)	Inclination (°)	Azimuth (°)	Vertical Depth (ft)	+N/-S (ft)	+E/-W (ft)	Vertical Section (ft)	Dogleg Rate (°/100ft)	Build Rate (°/100ft)	Formations / Comments
9,294.0	2.10	268.80	8,723.1	-520.5	-2,835.4	2,882.8	2.50	-0.44	
9,386.0	1.90	257.60	8,815.0	-520.8	-2,838.6	2,886.0	0.48	-0.22	
9,478.0	0.70	274.90	8,907.0	-521.1	-2,840.6	2,888.0	1.36	-1.30	
9,569.0	0.60	135.10	8,998.0	-521.4	-2,840.9	2,888.3	1.34	-0.11	
9,661.0	1.00	181.70	9,090.0	-522.5	-2,840.5	2,888.2	0.80	0.43	
9,751.0	1.10	174.20	9,180.0	-524.2	-2,840.5	2,888.4	0.19	0.11	
9,844.0	1.50	172.70	9,272.9	-526.3	-2,840.2	2,888.6	0.43	0.43	
9,936.0	0.40	253.10	9,364.9	-527.6	-2,840.4	2,889.0	1.62	-1.20	
10,028.0	0.40	234.50	9,456.9	-527.8	-2,841.0	2,889.6	0.14	0.00	
10,120.0	0.60	309.10	9,548.9	-527.7	-2,841.6	2,890.2	0.68	0.22	
10,211.0	2.10	348.10	9,639.9	-525.8	-2,842.3	2,890.5	1.84	1.65	
10,302.0	1.60	320.20	9,730.8	-523.2	-2,843.5	2,891.2	1.12	-0.55	
10,393.0	1.50	300.00	9,821.8	-521.6	-2,845.3	2,892.7	0.61	-0.11	
10,485.0	1.60	280.60	9,913.8	-520.8	-2,847.6	2,894.8	0.58	0.11	
10,668.0	0.80	198.20	10,096.7	-521.5	-2,850.5	2,897.8	0.92	-0.44	
10,759.0	1.00	229.60	10,187.7	-522.6	-2,851.3	2,898.8	0.58	0.22	
10,851.0	1.60	238.40	10,279.7	-523.8	-2,853.0	2,900.7	0.69	0.65	
10,942.0	0.50	171.70	10,370.7	-524.9	-2,854.1	2,901.9	1.62	-1.21	
11,034.0	0.90	202.90	10,462.7	-526.0	-2,854.3	2,902.3	0.59	0.43	
11,130.0	0.80	73.30	10,558.7	-526.5	-2,853.9	2,902.1	1.60	-0.10	
11,222.0	0.60	140.70	10,650.7	-526.6	-2,853.0	2,901.2	0.86	-0.22	
11,313.0	0.90	111.70	10,741.7	-527.3	-2,852.0	2,900.4	0.52	0.33	
11,404.0	1.50	54.70	10,832.7	-526.9	-2,850.4	2,898.7	1.39	0.66	
11,495.0	0.80	42.00	10,923.6	-525.7	-2,849.0	2,897.1	0.81	-0.77	
11,860.0	1.10	254.00	11,288.6	-524.8	-2,850.7	2,898.6	0.50	0.08	
11,951.0	1.10	254.60	11,379.6	-525.2	-2,852.4	2,900.3	0.01	0.00	
12,043.0	1.70	255.30	11,471.6	-525.8	-2,854.5	2,902.6	0.65	0.65	
12,135.0	2.20	258.10	11,563.5	-526.5	-2,857.6	2,905.7	0.55	0.54	
12,318.0	2.70	242.50	11,746.4	-529.2	-2,864.8	2,913.3	0.45	0.27	Last Cathedral Survey @ 12,318' MD
12,405.0	2.70	242.50	11,833.3	-531.1	-2,868.5	2,917.2	0.00	0.00	Projection to Bit @ 12,405' MD - 8502D-35 D36 4

Cathedral Energy Services

Survey Report

Company: EnCana Oil & Gas (USA) Inc	Local Co-ordinate Reference: Well 8502D-35 (was 8513B-25)
Project: Story Gulch	TVD Reference: KB = 32' @ 8323.0ft (Patterson 326)
Site: S36-T4S-R96W (D36 496)	MD Reference: KB = 32' @ 8323.0ft (Patterson 326)
Well: 8502D-35 (was 8513B-25)	North Reference: True
Wellbore: DD	Survey Calculation Method: Minimum Curvature
Design: FINAL	Database: USA EDM 5000 Multi Users DB

Targets									
Target Name	Dip Angle	Dip Dir.	TVD	+N/-S	+E/-W	Northing	Easting	Latitude	Longitude
- hit/miss target	(°)	(°)	(ft)	(ft)	(ft)	(ft)	(ft)		
- Shape									
8502D-35 D36 496 TGT	0.00	0.00	7,914.0	-523.1	-2,839.7	1,677,343.74	2,258,871.93	39° 39' 49.01 N	108° 7' 58.44 W
- actual wellpath misses target center by 7.8ft at 8484.9ft MD (7914.3 TVD, -525.0 N, -2832.2 E)									
- Point									
8502D-35 D36 496 PBH	0.00	0.00	12,504.0	-533.1	-2,856.7	1,677,334.27	2,258,854.61	39° 39' 48.91 N	108° 7' 58.66 W
- actual wellpath misses target center by 670.9ft at 12405.0ft MD (11833.3 TVD, -531.1 N, -2868.5 E)									
- Rectangle (sides W30.0 H50.0 D0.0)									

Design Annotations					
Measured Depth (ft)	Vertical Depth (ft)	Local Coordinates		Comment	
		+N/-S (ft)	+E/-W (ft)		
12,318.0	11,746.4	-529.2	-2,864.8	Last Cathedral Survey @ 12,318' MD	
12,405.0	11,833.3	-531.1	-2,868.5	Projection to Bit @ 12,405' MD	

Checked By: _____	Approved By: _____	Date: _____
-------------------	--------------------	-------------