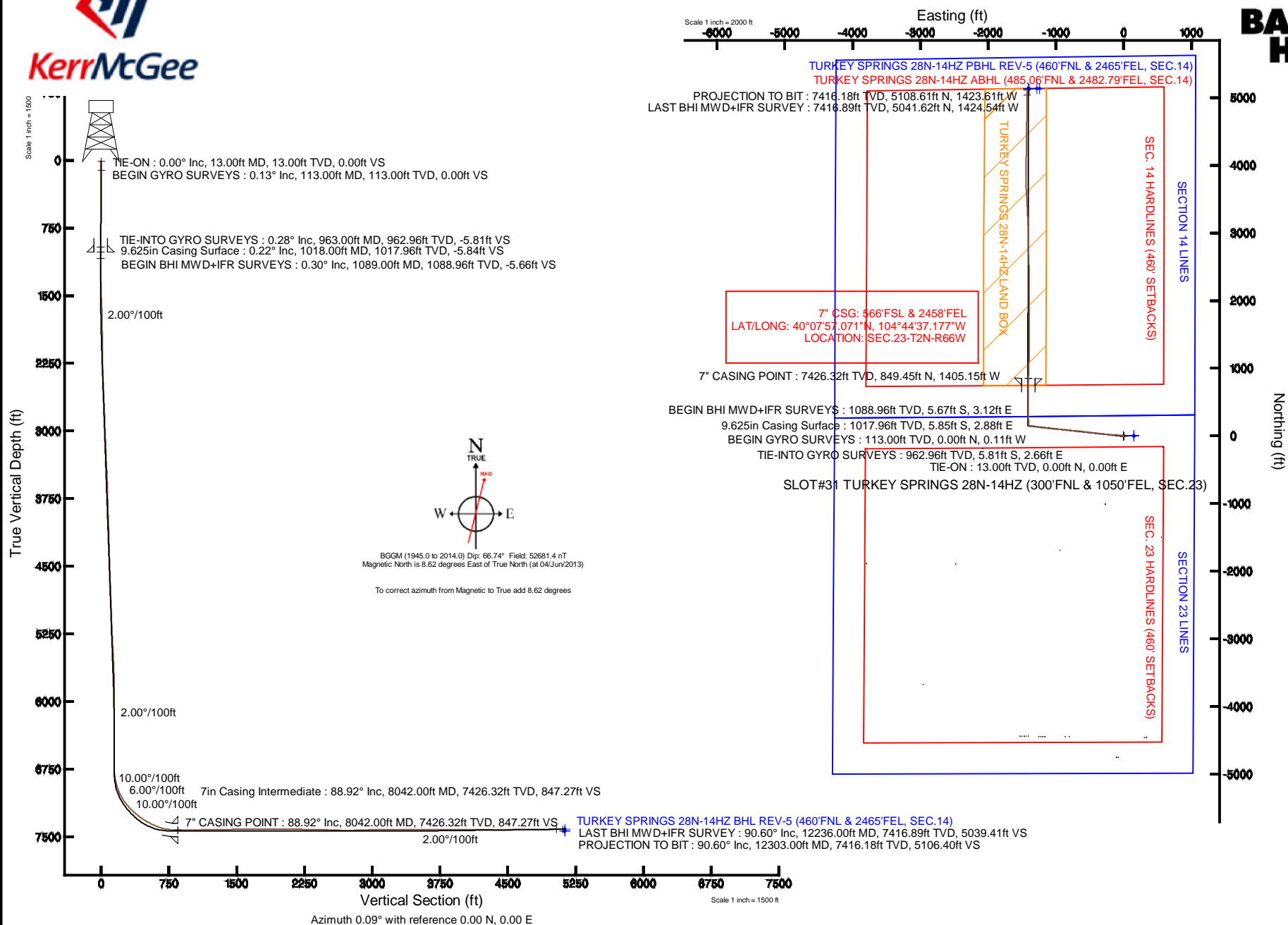


KERR-MCGEE OIL & GAS ONSHORE LP

Location: COLORADO Slot: SLOT#31 TURKEY SPRINGS 28N-14HZ (300'FNL & 1050'FEL, SEC.23)
 Field: WELD COUNTY (KERR MCGEE) Well: TURKEY SPRINGS 28N-14HZ
 Facility: SEC.23-T2N-R66W Wellbore: TURKEY SPRINGS 28N-14HZ PWB

Plot reference wellpath is TURKEY SPRINGS 28N-14HZ (REV-D.0) PWP

True vertical depths are referenced to ENSIGN 138 (RKB)	Grid System: NAD83 / Lambert Colorado SP, Northern Zone (501), US feet
Measured depths are referenced to ENSIGN 138 (RKB)	North Reference: True north
ENSGIN 138 (RKB) to Mean Sea Level: 5115 feet	Scale: True distance
Mean Sea Level to Mud line (At Slot: SLOT#31 TURKEY SPRINGS 28N-14HZ (300'FNL & 1050'FEL, SEC.23)): 0 feet	Depths are in feet
Coordinates are in feet referenced to Slot	Created by: robale01 on 17/Jun/2013





Actual Wellpath Report

TURKEY SPRINGS 28N-14HZ AWP

Page 1 of 6



REFERENCE WELLPATH IDENTIFICATION			
Operator	KERR-MCGEE OIL & GAS ONSHORE LP	Slot	SLOT#31 TURKEY SPRINGS 28N-14HZ (300'FNL & 1050'FEL, SEC.23)
Area	COLORADO	Well	TURKEY SPRINGS 28N-14HZ
Field	WELD COUNTY (KERR MCGEE)	Wellbore	TURKEY SPRINGS 28N-14HZ AWB
Facility	SEC.23-T2N-R66W		

REPORT SETUP INFORMATION			
Projection System	NAD83 / Lambert Colorado SP, Northern Zone (501), US feet	Software System	WellArchitect® 4.0.0
North Reference	True	User	Robiale01
Scale	0.999959	Report Generated	17/Jun/2013 at 14:11
Convergence at slot	n/a	Database/Source file	WA_ANADARKO/TURKEY_SPRINGS_28N-14HZ_AWB.xml

WELLPATH LOCATION						
	Local coordinates		Grid coordinates		Geographic coordinates	
	North[ft]	East[ft]	Easting[US ft]	Northing[US ft]	Latitude	Longitude
Slot Location	4749.59	75.81	3212889.34	1291185.22	40°07'48.677"N	104°44'19.086"W
Facility Reference Pt			3212854.29	1286435.36	40°07'01.741"N	104°44'20.062"W
Field Reference Pt			3197771.84	1268891.29	40°04'09.600"N	104°47'36.000"W

WELLPATH DATUM			
Calculation method	Minimum curvature	ENSIGN 138 (RKB) to Facility Vertical Datum	5115.00ft
Horizontal Reference Pt	Slot	ENSIGN 138 (RKB) to Mean Sea Level	5115.00ft
Vertical Reference Pt	ENSIGN 138 (RKB)	ENSIGN 138 (RKB) to Mud Line at Slot (SLOT#31 TURKEY SPRINGS 28N-14HZ (300'FNL & 1050'FEL, SEC.23))	5115.00ft
MD Reference Pt	ENSIGN 138 (RKB)	Section Origin	N 0.00, E 0.00 ft
Field Vertical Reference	Mean Sea Level	Section Azimuth	344.43°



Actual Wellpath Report

TURKEY SPRINGS 28N-14HZ AWP

Page 2 of 6



REFERENCE WELLPATH IDENTIFICATION

Operator	KERR-MCGEE OIL & GAS ONSHORE LP	Slot	SLOT#31 TURKEY SPRINGS 28N-14HZ (300'FNL & 1050'FEL, SEC.23)
Area	COLORADO	Well	TURKEY SPRINGS 28N-14HZ
Field	WELD COUNTY (KERR MCGEE)	Wellbore	TURKEY SPRINGS 28N-14HZ AWP
Facility	SEC.23-T2N-R66W		

WELLPATH DATA (130 stations) † = interpolated/extrapolated station

MD [ft]	Inclination [°]	Azimuth [°]	TVD [ft]	Vert Sect [ft]	North [ft]	East [ft]	Latitude	Longitude	DLS [°/100ft]	Comments
0.00†	0.000	268.780	0.00	0.00	0.00	0.00	40°07'48.677"N	104°44'19.086"W	0.00	
13.00	0.000	268.780	13.00	0.00	0.00	0.00	40°07'48.677"N	104°44'19.086"W	0.00	TIE-ON
113.00	0.130	268.780	113.00	0.03	0.00	-0.11	40°07'48.677"N	104°44'19.087"W	0.13	BEGIN GYRO SURVEYS
213.00	0.060	227.960	213.00	0.03	-0.04	-0.27	40°07'48.677"N	104°44'19.089"W	0.09	
313.00	0.370	145.470	313.00	-0.30	-0.34	-0.12	40°07'48.674"N	104°44'19.088"W	0.37	
413.00	0.500	111.860	413.00	-0.87	-0.77	0.47	40°07'48.669"N	104°44'19.080"W	0.28	
513.00	0.730	139.380	512.99	-1.71	-1.42	1.29	40°07'48.663"N	104°44'19.069"W	0.37	
613.00	0.650	149.860	612.98	-2.83	-2.39	1.99	40°07'48.653"N	104°44'19.060"W	0.15	
713.00	0.650	161.590	712.98	-3.95	-3.42	2.45	40°07'48.643"N	104°44'19.054"W	0.13	
813.00	0.650	178.330	812.97	-5.07	-4.52	2.65	40°07'48.632"N	104°44'19.052"W	0.19	
913.00	0.520	189.550	912.97	-6.03	-5.54	2.59	40°07'48.622"N	104°44'19.053"W	0.17	
963.00	0.280	115.000	962.96	-6.31	-5.81	2.66	40°07'48.620"N	104°44'19.052"W	1.04	TIE-INTO GYRO SURVEYS
1089.00	0.300	32.700	1088.96	-6.29	-5.67	3.12	40°07'48.621"N	104°44'19.046"W	0.30	BEGIN BHI MWD+IFR SURVEYS
1180.00	0.500	44.800	1179.96	-5.94	-5.18	3.53	40°07'48.626"N	104°44'19.041"W	0.24	
1272.00	1.600	292.800	1271.95	-4.94	-4.40	2.62	40°07'48.634"N	104°44'19.052"W	2.01	
1363.00	3.700	287.700	1362.85	-2.54	-3.02	-1.34	40°07'48.647"N	104°44'19.103"W	2.32	
1475.00	5.600	292.400	1474.47	2.80	0.17	-9.84	40°07'48.679"N	104°44'19.213"W	1.73	
1566.00	7.300	291.200	1564.89	8.99	3.95	-19.34	40°07'48.716"N	104°44'19.335"W	1.87	
1658.00	8.500	282.200	1656.02	15.66	7.50	-31.43	40°07'48.751"N	104°44'19.491"W	1.87	
1749.00	9.900	276.100	1745.85	21.68	9.75	-45.79	40°07'48.773"N	104°44'19.675"W	1.87	
1841.00	12.000	273.200	1836.17	27.68	11.13	-63.20	40°07'48.787"N	104°44'19.900"W	2.36	
1933.00	13.300	273.100	1925.94	34.15	12.23	-83.32	40°07'48.798"N	104°44'20.159"W	1.41	
2024.00	15.100	272.900	2014.15	41.26	13.40	-105.61	40°07'48.809"N	104°44'20.446"W	1.98	
2115.00	16.100	270.900	2101.80	48.59	14.20	-130.06	40°07'48.817"N	104°44'20.760"W	1.25	
2206.00	17.700	271.500	2188.87	56.23	14.76	-156.51	40°07'48.823"N	104°44'21.101"W	1.77	
2297.00	18.700	273.900	2275.32	65.15	16.11	-184.89	40°07'48.836"N	104°44'21.466"W	1.37	
2387.00	19.600	275.800	2360.34	75.46	18.62	-214.31	40°07'48.861"N	104°44'21.845"W	1.22	
2478.00	18.800	276.400	2446.27	86.51	21.80	-244.06	40°07'48.892"N	104°44'22.228"W	0.91	
2568.00	19.300	276.900	2531.34	97.62	25.20	-273.24	40°07'48.926"N	104°44'22.604"W	0.58	
2658.00	20.100	276.700	2616.08	109.17	28.79	-303.37	40°07'48.961"N	104°44'22.992"W	0.89	
2750.00	18.700	277.700	2702.85	120.99	32.61	-333.68	40°07'48.999"N	104°44'23.382"W	1.56	
2841.00	19.500	276.500	2788.84	132.46	36.28	-363.23	40°07'49.036"N	104°44'23.762"W	0.98	
2932.00	19.000	275.000	2874.75	143.37	39.29	-393.08	40°07'49.065"N	104°44'24.147"W	0.77	
3026.00	19.100	275.300	2963.60	154.23	42.05	-423.64	40°07'49.092"N	104°44'24.540"W	0.15	
3116.00	19.400	276.700	3048.57	165.14	45.15	-453.14	40°07'49.123"N	104°44'24.920"W	0.61	
3206.00	20.600	277.200	3133.14	176.93	48.88	-483.70	40°07'49.160"N	104°44'25.313"W	1.35	
3301.00	20.200	276.500	3222.19	189.56	52.83	-516.58	40°07'49.199"N	104°44'25.736"W	0.49	
3396.00	19.500	277.500	3311.54	201.94	56.76	-548.59	40°07'49.238"N	104°44'26.149"W	0.82	
3490.00	18.700	278.800	3400.37	214.31	61.11	-579.04	40°07'49.281"N	104°44'26.541"W	0.96	
3585.00	19.000	275.700	3490.27	226.20	64.98	-609.48	40°07'49.319"N	104°44'26.933"W	1.10	
3681.00	19.600	275.000	3580.88	237.53	67.93	-641.07	40°07'49.348"N	104°44'27.339"W	0.67	
3775.00	17.200	274.100	3670.07	247.75	70.30	-670.64	40°07'49.372"N	104°44'27.720"W	2.57	
3869.00	17.300	276.100	3759.84	257.59	72.78	-698.40	40°07'49.396"N	104°44'28.077"W	0.64	
3964.00	17.500	275.500	3850.49	267.94	75.65	-726.67	40°07'49.424"N	104°44'28.441"W	0.28	
4059.00	18.000	275.700	3940.97	278.40	78.48	-755.49	40°07'49.452"N	104°44'28.812"W	0.53	



Actual Wellpath Report

TURKEY SPRINGS 28N-14HZ AWP

Page 3 of 6



REFERENCE WELLPATH IDENTIFICATION			
Operator	KERR-MCGEE OIL & GAS ONSHORE LP	Slot	SLOT#31 TURKEY SPRINGS 28N-14HZ (300'FNL & 1050'FEL, SEC.23)
Area	COLORADO	Well	TURKEY SPRINGS 28N-14HZ
Field	WELD COUNTY (KERR MCGEE)	Wellbore	TURKEY SPRINGS 28N-14HZ AWP
Facility	SEC.23-T2N-R66W		

WELLPATH DATA (130 stations)

MD [ft]	Inclination [°]	Azimuth [°]	TVD [ft]	Vert Sect [ft]	North [ft]	East [ft]	Latitude	Longitude	DLS [°/100ft]	Comments
4153.00	19.100	276.100	4030.08	289.35	81.55	-785.23	40°07'49.483"N	104°44'29.195"W	1.18	
4249.00	18.800	274.900	4120.88	300.56	84.54	-816.26	40°07'49.512"N	104°44'29.595"W	0.51	
4344.00	19.300	274.400	4210.68	311.28	87.06	-847.17	40°07'49.537"N	104°44'29.993"W	0.55	
4440.00	19.900	274.300	4301.11	322.25	89.50	-879.28	40°07'49.561"N	104°44'30.406"W	0.63	
4534.00	20.200	274.700	4389.42	333.31	92.03	-911.41	40°07'49.586"N	104°44'30.820"W	0.35	
4630.00	19.100	275.600	4479.83	344.72	94.92	-943.56	40°07'49.615"N	104°44'31.234"W	1.19	
4726.00	18.300	277.200	4570.76	356.23	98.34	-974.14	40°07'49.649"N	104°44'31.627"W	0.99	
4821.00	18.800	275.100	4660.82	367.41	101.57	-1004.19	40°07'49.681"N	104°44'32.014"W	0.88	
4916.00	19.900	274.600	4750.46	378.39	104.23	-1035.55	40°07'49.707"N	104°44'32.418"W	1.17	
5012.00	19.500	275.900	4840.84	389.88	107.19	-1067.78	40°07'49.736"N	104°44'32.833"W	0.62	
5106.00	19.000	276.300	4929.58	401.33	110.48	-1098.59	40°07'49.769"N	104°44'33.229"W	0.55	
5202.00	20.200	275.400	5020.02	413.08	113.75	-1130.63	40°07'49.801"N	104°44'33.642"W	1.29	
5297.00	19.100	276.400	5109.48	424.77	117.03	-1162.40	40°07'49.833"N	104°44'34.051"W	1.21	
5393.00	19.400	276.700	5200.12	436.69	120.64	-1193.84	40°07'49.869"N	104°44'34.456"W	0.33	
5489.00	17.800	278.200	5291.10	448.65	124.59	-1224.21	40°07'49.908"N	104°44'34.847"W	1.74	
5585.00	16.700	279.900	5382.78	460.49	129.06	-1252.32	40°07'49.952"N	104°44'35.209"W	1.26	
5681.00	16.400	282.400	5474.80	472.78	134.34	-1279.14	40°07'50.004"N	104°44'35.554"W	0.80	
5776.00	12.300	281.000	5566.82	483.60	139.15	-1302.18	40°07'50.052"N	104°44'35.851"W	4.33	
5872.00	11.200	280.700	5660.81	492.30	142.83	-1321.38	40°07'50.088"N	104°44'36.098"W	1.15	
5968.00	9.100	278.400	5755.30	499.51	145.67	-1338.06	40°07'50.116"N	104°44'36.312"W	2.23	
6065.00	7.400	274.200	5851.29	504.74	147.25	-1351.88	40°07'50.132"N	104°44'36.490"W	1.86	
6159.00	6.200	272.700	5944.63	508.38	147.94	-1362.98	40°07'50.139"N	104°44'36.633"W	1.29	
6253.00	4.600	269.500	6038.21	510.96	148.14	-1371.82	40°07'50.141"N	104°44'36.747"W	1.73	
6348.00	3.600	268.100	6132.97	512.65	148.01	-1378.61	40°07'50.139"N	104°44'36.835"W	1.06	
6444.00	2.600	267.400	6228.83	513.85	147.81	-1383.80	40°07'50.137"N	104°44'36.901"W	1.04	
6538.00	2.000	264.400	6322.75	514.61	147.55	-1387.56	40°07'50.135"N	104°44'36.950"W	0.65	
6633.00	1.700	250.400	6417.70	514.80	146.92	-1390.54	40°07'50.128"N	104°44'36.988"W	0.57	
6916.00	1.300	288.200	6700.61	516.29	146.51	-1397.55	40°07'50.124"N	104°44'37.078"W	0.37	
6962.00	1.700	279.500	6746.59	516.87	146.79	-1398.71	40°07'50.127"N	104°44'37.093"W	1.00	
7010.00	4.600	331.600	6794.52	519.05	148.60	-1400.33	40°07'50.145"N	104°44'37.114"W	7.92	
7057.00	9.500	347.400	6841.16	524.77	154.05	-1402.08	40°07'50.199"N	104°44'37.137"W	11.12	
7105.00	14.100	353.000	6888.13	534.51	163.72	-1403.65	40°07'50.295"N	104°44'37.157"W	9.86	
7152.00	16.900	359.600	6933.42	546.77	176.24	-1404.40	40°07'50.418"N	104°44'37.167"W	7.03	
7202.00	20.300	1.900	6980.80	562.06	192.18	-1404.16	40°07'50.576"N	104°44'37.163"W	6.96	
7249.00	23.900	0.800	7024.34	578.98	209.85	-1403.76	40°07'50.750"N	104°44'37.158"W	7.71	
7296.00	29.400	357.400	7066.34	599.37	230.92	-1404.15	40°07'50.959"N	104°44'37.163"W	12.14	
7343.00	35.400	356.200	7106.00	623.96	256.05	-1405.58	40°07'51.207"N	104°44'37.182"W	12.84	
7391.00	40.500	356.400	7143.84	652.84	285.49	-1407.48	40°07'51.498"N	104°44'37.206"W	10.63	
7438.00	43.200	358.700	7178.85	683.37	316.82	-1408.80	40°07'51.807"N	104°44'37.223"W	6.61	
7486.00	47.200	359.300	7212.67	716.32	350.86	-1409.39	40°07'52.144"N	104°44'37.231"W	8.38	
7533.00	50.000	0.100	7243.74	750.33	386.11	-1409.57	40°07'52.492"N	104°44'37.233"W	6.09	
7581.00	52.500	1.200	7273.79	786.27	423.54	-1409.14	40°07'52.862"N	104°44'37.228"W	5.51	
7628.00	55.000	0.800	7301.58	822.59	461.44	-1408.48	40°07'53.237"N	104°44'37.219"W	5.36	
7677.00	58.900	0.200	7328.29	862.05	502.50	-1408.12	40°07'53.642"N	104°44'37.215"W	8.03	
7724.00	63.100	0.100	7351.07	901.61	543.60	-1408.02	40°07'54.048"N	104°44'37.213"W	8.94	



Actual Wellpath Report

TURKEY SPRINGS 28N-14HZ AWP

Page 4 of 6



REFERENCE WELLPATH IDENTIFICATION

Operator	KERR-MCGEE OIL & GAS ONSHORE LP	Slot	SLOT#31 TURKEY SPRINGS 28N-14HZ (300'FNL & 1050'FEL, SEC.23)
Area	COLORADO	Well	TURKEY SPRINGS 28N-14HZ
Field	WELD COUNTY (KERR MCGEE)	Wellbore	TURKEY SPRINGS 28N-14HZ AWP
Facility	SEC.23-T2N-R66W		

WELLPATH DATA (130 stations) † = interpolated/extrapolated station

MD [ft]	Inclination [°]	Azimuth [°]	TVD [ft]	Vert Sect [ft]	North [ft]	East [ft]	Latitude	Longitude	DLS [°/100ft]	Comments
7772.00	66.200	359.900	7371.62	943.39	586.97	-1408.02	40°07'54.477"N	104°44'37.213"W	6.47	
7819.00	71.200	359.100	7388.69	985.66	630.74	-1408.41	40°07'54.910"N	104°44'37.218"W	10.76	
7866.00	74.300	0.000	7402.63	1028.99	675.62	-1408.76	40°07'55.353"N	104°44'37.223"W	6.84	
7913.00	78.900	1.300	7413.52	1072.87	721.32	-1408.23	40°07'55.805"N	104°44'37.216"W	10.15	
7961.00	82.500	1.700	7421.27	1118.15	768.67	-1406.99	40°07'56.273"N	104°44'37.200"W	7.54	
7996.00	86.700	1.100	7424.57	1151.47	803.50	-1406.14	40°07'56.617"N	104°44'37.189"W	12.12	
8042.00†	88.919	1.371	7426.32	1195.47	849.45	-1405.15	40°07'57.071"N	104°44'37.177"W	4.86	7" CASING POINT
8081.00	90.800	1.600	7426.42	1232.75	888.43	-1404.14	40°07'57.456"N	104°44'37.164"W	4.86	
8176.00	90.900	1.800	7425.01	1323.46	983.38	-1401.32	40°07'58.394"N	104°44'37.127"W	0.24	
8272.00	91.500	2.100	7423.00	1414.98	1079.30	-1398.06	40°07'59.342"N	104°44'37.086"W	0.70	
8367.00	90.700	1.500	7421.18	1505.63	1174.24	-1395.07	40°08'00.281"N	104°44'37.047"W	1.05	
8462.00	90.600	0.200	7420.10	1596.75	1269.22	-1393.66	40°08'01.219"N	104°44'37.029"W	1.37	
8652.00	91.300	359.800	7416.95	1779.75	1459.19	-1393.66	40°08'03.096"N	104°44'37.029"W	0.42	
8842.00	89.600	0.100	7415.46	1962.81	1649.18	-1393.83	40°08'04.974"N	104°44'37.032"W	0.91	
9031.00	90.000	359.500	7416.12	2145.04	1838.18	-1394.49	40°08'06.842"N	104°44'37.040"W	0.38	
9220.00	90.100	359.900	7415.95	2327.37	2027.17	-1395.48	40°08'08.709"N	104°44'37.053"W	0.22	
9409.00	89.200	0.000	7417.11	2509.47	2216.17	-1395.64	40°08'10.577"N	104°44'37.055"W	0.48	
9504.00	88.400	0.100	7419.09	2600.94	2311.15	-1395.56	40°08'11.516"N	104°44'37.054"W	0.85	
9601.00	89.900	0.100	7420.53	2694.32	2408.13	-1395.39	40°08'12.474"N	104°44'37.052"W	1.55	
9791.00	87.200	356.800	7425.34	2878.56	2597.96	-1400.52	40°08'14.350"N	104°44'37.118"W	2.24	
9980.00	91.400	359.500	7427.65	3062.09	2786.79	-1406.62	40°08'16.216"N	104°44'37.197"W	2.64	
10171.00	91.900	359.600	7422.15	3246.40	2977.70	-1408.12	40°08'18.103"N	104°44'37.216"W	0.27	
10361.00	89.900	357.300	7419.17	3430.70	3167.58	-1413.26	40°08'19.979"N	104°44'37.283"W	1.60	
10551.00	90.300	357.200	7418.84	3615.96	3357.36	-1422.38	40°08'21.854"N	104°44'37.400"W	0.22	
10739.00	89.900	357.000	7418.51	3799.38	3545.12	-1431.89	40°08'23.710"N	104°44'37.523"W	0.24	
10834.00	90.300	356.600	7418.34	3892.17	3639.97	-1437.19	40°08'24.647"N	104°44'37.591"W	0.60	
10929.00	89.800	358.200	7418.26	3984.75	3734.87	-1441.50	40°08'25.585"N	104°44'37.647"W	1.76	
11023.00	89.400	359.600	7418.91	4075.76	3828.85	-1443.30	40°08'26.514"N	104°44'37.670"W	1.55	
11119.00	89.400	1.400	7419.92	4168.00	3924.84	-1442.47	40°08'27.462"N	104°44'37.659"W	1.87	
11214.00	89.200	1.600	7421.08	4258.81	4019.80	-1439.98	40°08'28.401"N	104°44'37.627"W	0.30	
11308.00	90.100	0.900	7421.66	4348.78	4113.77	-1437.93	40°08'29.329"N	104°44'37.601"W	1.21	
11403.00	90.200	1.200	7421.41	4439.81	4208.76	-1436.19	40°08'30.268"N	104°44'37.579"W	0.33	
11499.00	89.100	359.800	7421.99	4532.05	4304.75	-1435.35	40°08'31.216"N	104°44'37.568"W	1.85	
11594.00	90.100	0.600	7422.66	4623.47	4399.74	-1435.02	40°08'32.155"N	104°44'37.564"W	1.35	
11784.00	90.700	1.200	7421.33	4805.67	4589.71	-1432.03	40°08'34.033"N	104°44'37.526"W	0.45	
11879.00	90.500	1.200	7420.33	4896.62	4684.69	-1430.05	40°08'34.971"N	104°44'37.500"W	0.21	
11974.00	90.200	0.500	7419.75	4987.75	4779.67	-1428.64	40°08'35.910"N	104°44'37.482"W	0.80	
12069.00	90.800	1.100	7418.93	5078.89	4874.66	-1427.31	40°08'36.848"N	104°44'37.465"W	0.89	
12236.00	90.600	0.800	7416.89	5238.98	5041.62	-1424.54	40°08'38.498"N	104°44'37.429"W	0.22	LAST BHI MWD+IFR SURVEY
12303.00	90.600	0.800	7416.18	5303.26	5108.61	-1423.61	40°08'39.160"N	104°44'37.417"W	0.00	PROJECTION TO BIT



Actual Wellpath Report

TURKEY SPRINGS 28N-14HZ AWP

Page 5 of 6



REFERENCE WELLPATH IDENTIFICATION

Operator	KERR-MCGEE OIL & GAS ONSHORE LP	Slot	SLOT#31 TURKEY SPRINGS 28N-14HZ (300'FNL & 1050'FEL, SEC.23)
Area	COLORADO	Well	TURKEY SPRINGS 28N-14HZ
Field	WELD COUNTY (KERR MCGEE)	Wellbore	TURKEY SPRINGS 28N-14HZ AWB
Facility	SEC.23-T2N-R66W		

HOLE & CASING SECTIONS - Ref Wellbore: TURKEY SPRINGS 28N-14HZ AWB Ref Wellpath: TURKEY SPRINGS 28N-14HZ AWP

String/Diameter	Start MD [ft]	End MD [ft]	Interval [ft]	Start TVD [ft]	End TVD [ft]	Start N/S [ft]	Start E/W [ft]	End N/S [ft]	End E/W [ft]
12.25in Open Hole	13.00	1018.00	1005.00	13.00	1017.96	0.00	0.00	-5.85	2.88
9.625in Casing Surface	13.00	1018.00	1005.00	13.00	1017.96	0.00	0.00	-5.85	2.88
8.75in Open Hole	1018.00	8052.00	7034.00	1017.96	7426.47	-5.85	2.88	859.44	-1404.91
7in Casing Intermediate	13.00	8042.00	8029.00	13.00	7426.32	0.00	0.00	849.45	-1405.15
6.125in Open Hole	8052.00	12303.00	4251.00	7426.47	7416.18	859.44	-1404.91	5108.61	-1423.61

TARGETS

Name	MD [ft]	TVD [ft]	North [ft]	East [ft]	Grid East [US ft]	Grid North [US ft]	Latitude	Longitude	Shape
SECTION 14 LINES		0.00	1.11	149.91	3213039.23	1291187.62	40°07'48.688"N	104°44'17.156"W	polygon
SECTION 23 LINES		0.00	1.11	149.91	3213039.23	1291187.62	40°07'48.688"N	104°44'17.156"W	polygon
SEC. 14 HARDLINES (460' SETBACKS)		7000.00	1.11	149.91	3213039.23	1291187.62	40°07'48.688"N	104°44'17.156"W	polygon
SEC. 23 HARDLINES (460' SETBACKS)		7000.00	1.11	149.91	3213039.23	1291187.62	40°07'48.688"N	104°44'17.156"W	polygon
TURKEY SPRINGS 28N-14HZ BHL REV-5 (460'FNL & 2465'FEL, SEC.14)		7415.00	5133.67	-1405.82	3211439.55	1296306.41	40°08'39.408"N	104°44'37.188"W	point
TURKEY SPRINGS 28N-14HZ BHL ON PLAT REV-1 (460'FNL & 2452'FEL, SEC.14)		7435.00	5133.67	-1392.82	3211452.55	1296306.52	40°08'39.408"N	104°44'37.021"W	point
TURKEY SPRINGS 28N-14HZ BHL REV-2 (460'FNL & 2302'FEL, SEC.14)		7435.00	5133.67	-1242.82	3211602.54	1296307.81	40°08'39.408"N	104°44'35.090"W	point
TURKEY SPRINGS 28N-14HZ BHL REV-3 (460'FNL & 2342'FEL, SEC.14)		7435.00	5133.67	-1282.82	3211562.54	1296307.47	40°08'39.408"N	104°44'35.605"W	point
TURKEY SPRINGS 28N-14HZ BHL REV-4 (460'FNL & 2465'FEL, SEC.14)		7435.00	5133.67	-1405.82	3211439.55	1296306.41	40°08'39.408"N	104°44'37.188"W	point
TURKEY SPRINGS 28N-14HZ LAND BOX		8013.00	-0.02	0.00	3212889.34	1291185.20	40°07'48.677"N	104°44'19.086"W	polygon

WELLPATH COMPOSITION - Ref Wellbore: TURKEY SPRINGS 28N-14HZ AWB Ref Wellpath: TURKEY SPRINGS 28N-14HZ AWP

Start MD [ft]	End MD [ft]	Positional Uncertainty Model	Log Name/Comment	Wellbore
13.00	963.00	Generic gyro - continuous (Standard)	MS GYRO SURVEYS <113-963>	TURKEY SPRINGS 28N-14HZ AWB
963.00	7996.00	NaviTrak (MAGCORR,IFR)	BHI MWD+IFR 8 3/4" HOLE <1089-7996>	TURKEY SPRINGS 28N-14HZ AWB
7996.00	12236.00	OnTrak (MAGCORR,IFR)	BHI MWD+IFR 6 1/8" HOLE <8081-12236>	TURKEY SPRINGS 28N-14HZ AWB
12236.00	12303.00	Blind Drilling (std)	Projection to bit	TURKEY SPRINGS 28N-14HZ AWB



Actual Wellpath Report

TURKEY SPRINGS 28N-14HZ AWP

Page 6 of 6



REFERENCE WELLPATH IDENTIFICATION

Operator	KERR-MCGEE OIL & GAS ONSHORE LP	Slot	SLOT#31 TURKEY SPRINGS 28N-14HZ (300'FNL & 1050'FEL, SEC.23)
Area	COLORADO	Well	TURKEY SPRINGS 28N-14HZ
Field	WELD COUNTY (KERR MCGEE)	Wellbore	TURKEY SPRINGS 28N-14HZ AWB
Facility	SEC.23-T2N-R66W		

WELLPATH COMMENTS

MD [ft]	Inclination [°]	Azimuth [°]	TVD [ft]	Comment
13.00	0.000	268.780	13.00	TIE-ON
113.00	0.130	268.780	113.00	BEGIN GYRO SURVEYS
963.00	0.280	115.000	962.96	TIE-INTO GYRO SURVEYS
1089.00	0.300	32.700	1088.96	BEGIN BHI MWD+IFR SURVEYS
8042.00	88.919	1.371	7426.32	7" CASING POINT
12236.00	90.600	0.800	7416.89	LAST BHI MWD+IFR SURVEY
12303.00	90.600	0.800	7416.18	PROJECTION TO BIT