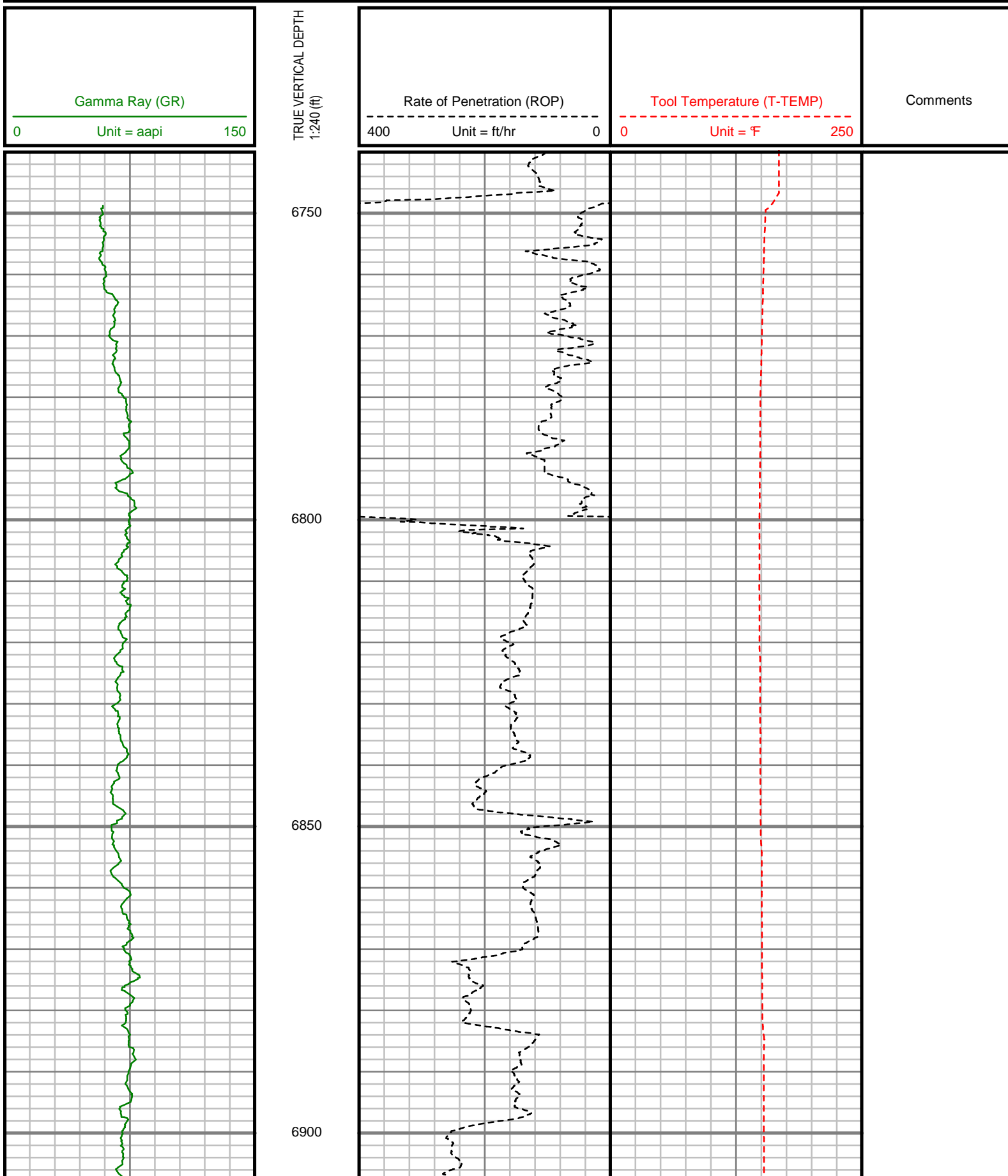
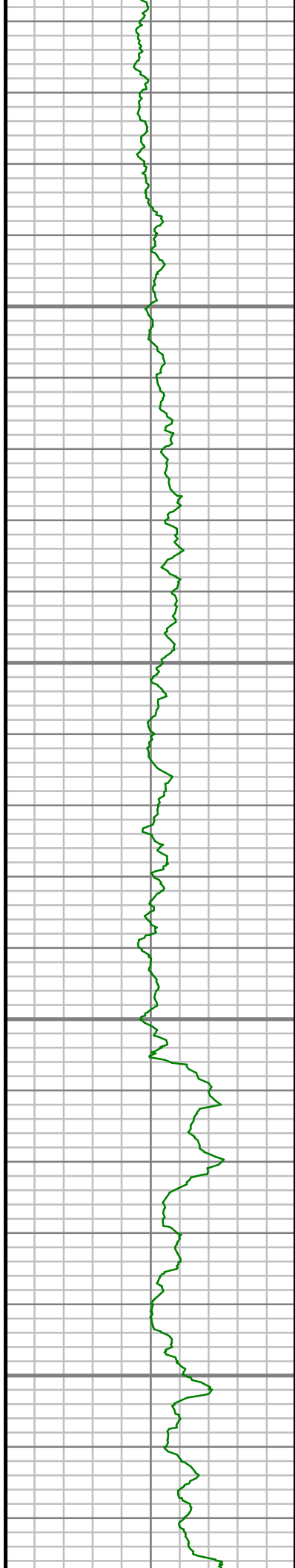


| Remarks |
|---|
| ANADARKO PETROLEUM CORP PRODUCTION AFE# 2066598 |
| SCIENTIFIC DRILLING INTERNATIONAL JOB# 410613HMP18978 |
| SCIENTIFIC DRILLING INTERNATIONAL WO# 166245 |
| |
| ALL REFERENCES IN THE DEPTH TRACK ARE AT BIT DEPTH. |
| ALL DATA IS MEMORY DATA UNLESS STATED OTHERWISE. |
| REMARK #1: RUN #3 IS REAL-TIME DATA. |
| |
| FLAT AVERAGE OF 1.0FT. APPLIED TO GAMMA RAY CURVE |
| FLAT AVERAGE OF 1.0FT. APPLIED TO ROP CURVE |
| FLAT AVERAGE OF 1.0FT. APPLIED TO TEMPERATURE CURVE |
| |
| RUN #1: MWD / DIRECTIONAL RUN |
| SENSORS S/N: PULSER = 128-312 / CONT = 247 / MWD EYE = 0778 |
| BIT TO SENSOR OFFSET: SURVEY = 51.79 FT. |
| |
| RUN #2: MWD / GAMMA RAY LOGGING RUN |
| SENSORS S/N: PULSER = 128-286 / CONT = 275 / MWD EYE = 0259 / GAMMA RAY = 232 |
| BIT TO SENSOR OFFSETS: SURVEY = 61.07 FT. / GAMMA RAY = 51.82 FT. |
| |
| RUN #3: MWD / GAMMA RAY / PROPAGATION RESISTIVITY LOGGING RUN |
| SENSORS S/N: PULSER = 78-142 / CONT = 185 / MWD EYE = 0258 / GAMMA RAY = 395 / PRT = 343 |
| BIT TO SENSOR OFFSETS: SURVEY = 62.86 FT. / GAMMA RAY = 48.11 FT. / RESISTIVITY = 51.61 FT. |
| |
| RUN #4: MWD / GAMMA RAY / PROPAGATION RESISTIVITY LOGGING RUN |
| SENSORS S/N: PULSER = 78-024 / CONT = 227 / MWD EYE = 0356 / GAMMA RAY = 385 / PRT = 340 |

[illegible]

ANADARKO PETROLEUM CORP
DOVE 8C-13HZ
WATTENBERG FIELD
WELD COUNTY, COLORADO
05-013-35906



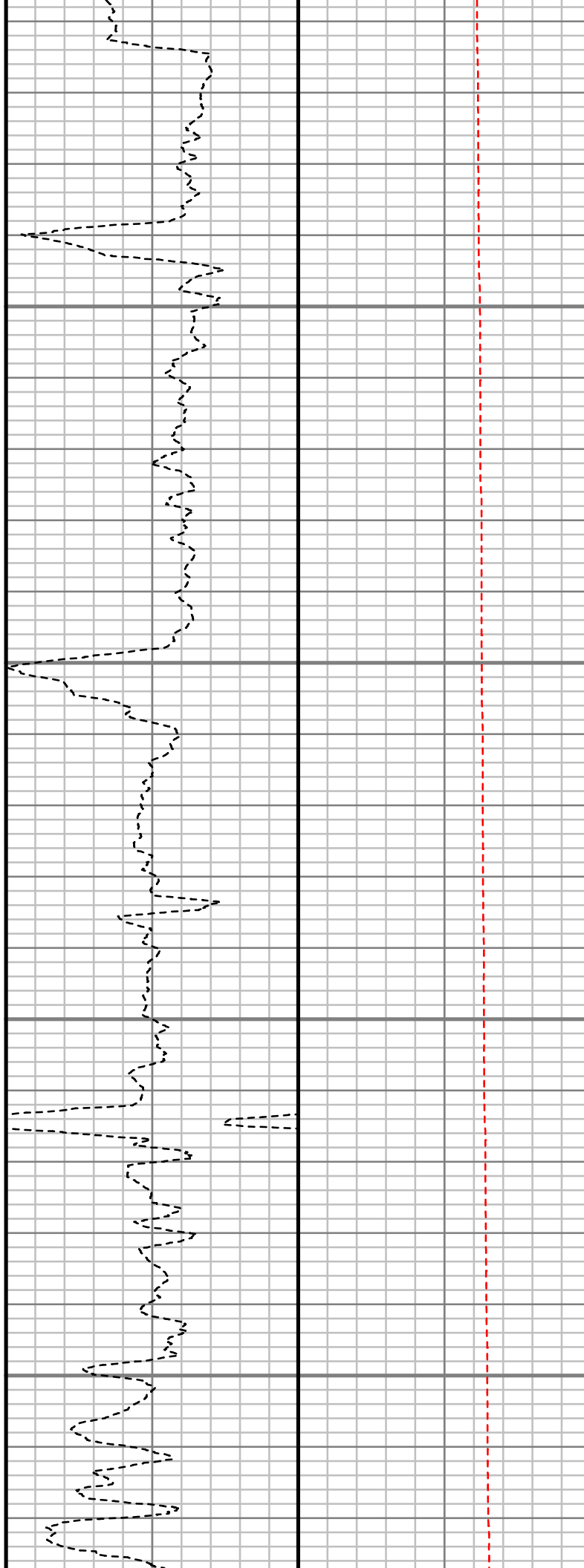


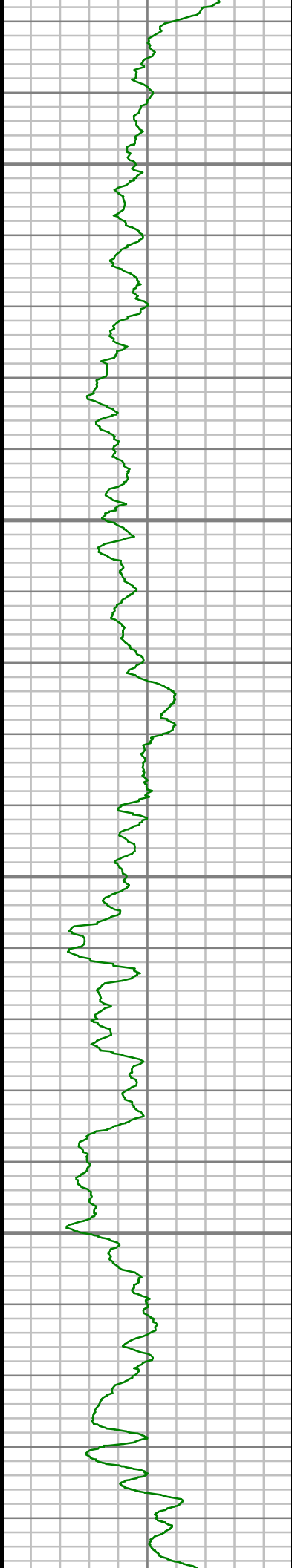
6950

7000

7050

7100



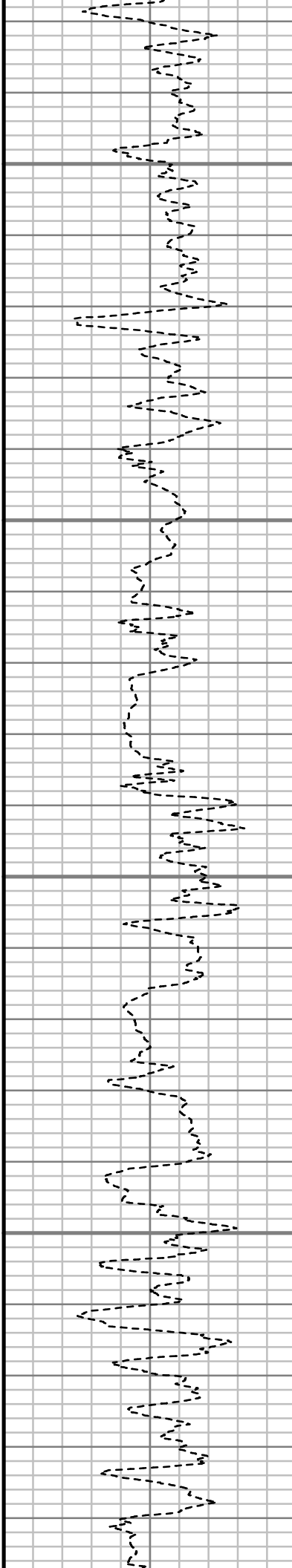


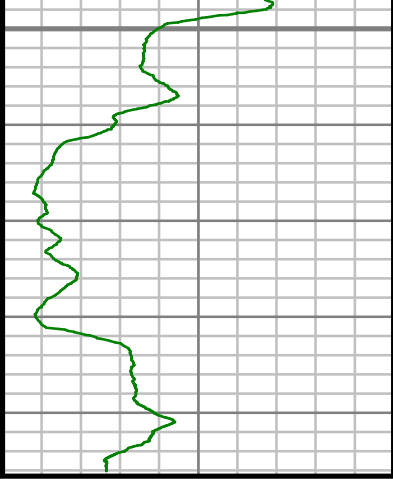
7150

7200

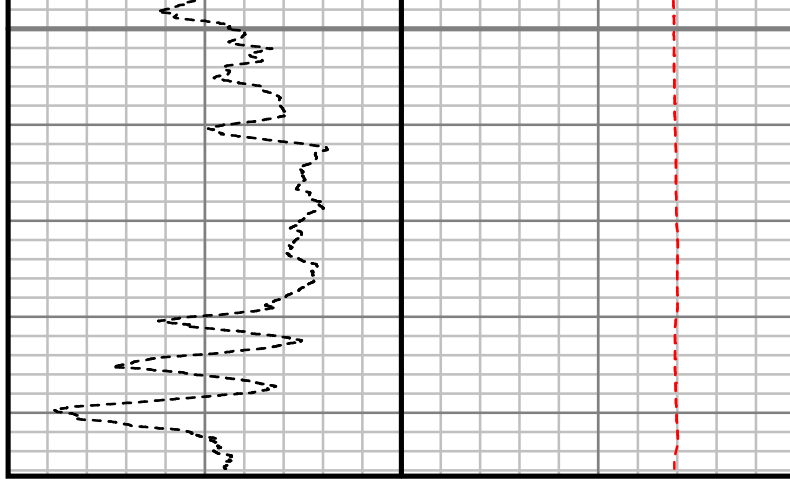
7250

7300





7350



TRUE VERTICAL DEPTH
1,240 (ft)

| Gamma Ray (GR) | | |
|----------------|-------------|-----|
| 0 | Unit = aapi | 150 |

| Rate of Penetration (ROP) | | |
|---------------------------|--------------|---|
| 400 | Unit = ft/hr | 0 |

| Tool Temperature (T-TEMP) | | |
|---------------------------|-----------|-----|
| 0 | Unit = °F | 250 |

| Comments |
|----------|
|----------|



5" = 100'

FEET TVD