

The Road to Excellence Starts with Safety

Sold To #: 300721	Ship To #: 2993015	Quote #:	Sales Order #: 900369347
Customer: WPX ENERGY ROCKY MOUNTAIN LLC-EBUS	Customer Rep: Towers, Ron		
Well Name: RWF	Well #: 314-29	API/UWI #: 05-123-21667	
Field: Rulison	City (SAP): RIFLE	County/Parish: Garfield	State: Colorado
Lat: N 39.49 deg. OR N 39 deg. 29 min. 24.432 secs.	Long: W 107.919 deg. OR W -108 deg. 4 min. 52.842 secs.		
Contractor: NABORS 577	Rig/Platform Name/Num: NABORS 577		
Job Purpose: Cement Surface Casing			
Well Type: Development Well	Job Type: Cement Surface Casing		
Sales Person: MAYO, MARK	Srv Supervisor: ARNOLD, EDWARD	MBU ID Emp #: 439784	

Job Personnel

HES Emp Name	Exp Hrs	Emp #	HES Emp Name	Exp Hrs	Emp #	HES Emp Name	Exp Hrs	Emp #
ARNOLD, EDWARD John	9.5	439784	SIMINEO, JEROD M	9.5	479954	SINCLAIR, DAN J	9.5	338784

Equipment

HES Unit #	Distance-1 way	HES Unit #	Distance-1 way	HES Unit #	Distance-1 way	HES Unit #	Distance-1 way
10296152C	60 mile	11021972	60 mile	11027039	60 mile	11259882	60 mile
11808849	60 mile						

Job Hours

Date	On Location Hours	Operating Hours	Date	On Location Hours	Operating Hours	Date	On Location Hours	Operating Hours
4-18-2013	9.5	3						

TOTAL Total is the sum of each column separately

Job

Formation Name	Formation Depth (MD)	Top	Bottom	Form Type	Job depth MD	Job Depth TVD	Water Depth	Perforation Depth (MD)	From	To
				BHST	1130. ft	1130. ft				
							Wk Ht Above Floor			3. ft

Job Times

Date	Time	Time Zone
18 - Apr - 2013	02:00	MST
18 - Apr - 2013	05:00	MST
18 - Apr - 2013	12:14	MST
18 - Apr - 2013	13:10	MST
18 - Apr - 2013	14:30	MST

Well Data

Description	New / Used	Max pressure psig	Size in	ID in	Weight lbm/ft	Thread	Grade	Top MD ft	Bottom MD ft	Top TVD ft	Bottom TVD ft
-------------	------------	-------------------	---------	-------	---------------	--------	-------	-----------	--------------	------------	---------------

Sales/Rental/3rd Party (HES)

Description	Qty	Qty uom	Depth	Supplier
PLUG,CMTG,TOP,9 5/8,HWE,8.16 MIN/9.06 MA'	1	EA		

Tools and Accessories

Type	Size	Qty	Make	Depth	Type	Size	Qty	Make	Depth	Type	Size	Qty	Make
Guide Shoe					Packer					Top Plug	9 5/8"	1	HES
Float Shoe					Bridge Plug					Bottom Plug			
Float Collar					Retainer					SSR plug set			
Insert Float										Plug Container	9 5/8"	1	HES
Stage Tool										Centralizers			

Miscellaneous Materials

Gelling Agt	Conc	Surfactant	Conc	Acid Type	Qty	Conc	%
Treatment Fld	Conc	Inhibitor	Conc	Sand Type	Size	Qty	

Fluid Data

Stage/Plug #: 1									
Fluid #	Stage Type	Fluid Name	Qty	Qty uom	Mixing Density lbm/gal	Yield ft3/sk	Mix Fluid Gal/sk	Rate bbl/min	Total Mix Fluid Gal/sk

Stage/Plug #: 1

HALLIBURTON**Cementing Job Summary**

Stage/Plug #: 1									
Fluid #	Stage Type	Fluid Name	Qty	Qty uom	Mixing Density lbm/gal	Yield ft ³ /sk	Mix Fluid Gal/sk	Rate bbl/min	Total Mix Fluid Gal/sk
1	Fresh Water Spacer		20.00	bbl	.	.0	.0	4	
2	VersaCem GJ1 Lead Cement	VERSACEM (TM) SYSTEM (452010)	160.0	sacks	12.3	2.38	13.75	7	13.75
	13.75 Gal	FRESH WATER							
3	VersaCem GJ1 Tail Cement	VERSACEM (TM) SYSTEM (452010)	160.0	sacks	12.8	2.11	11.75	7	11.75
	11.75 Gal	FRESH WATER							
4	Fresh Water Displacement		85.00	bbl	.	.0	.0	10	
Calculated Values		Pressures		Volumes					
Displacement	85	Shut In: Instant		Lost Returns		Cement Slurry	127.9	Pad	
Top Of Cement	SURFACE	5 Min		Cement Returns	25	Actual Displacement	85	Treatment	
Frac Gradient		15 Min		Spacers	20	Load and Breakdown		Total Job	232.5
Rates									
Circulating	RIG	Mixing	7	Displacement	10	Avg. Job	8		
Cement Left In Pipe	Amount	44.22 FT	Reason	Shoe Joint					
Frac Ring # 1 @	ID	Frac ring # 2 @	ID	Frac Ring # 3 @	ID	Frac Ring # 4 @	ID		
The Information Stated Herein Is Correct				Customer Representative Signature					

The Road to Excellence Starts with Safety

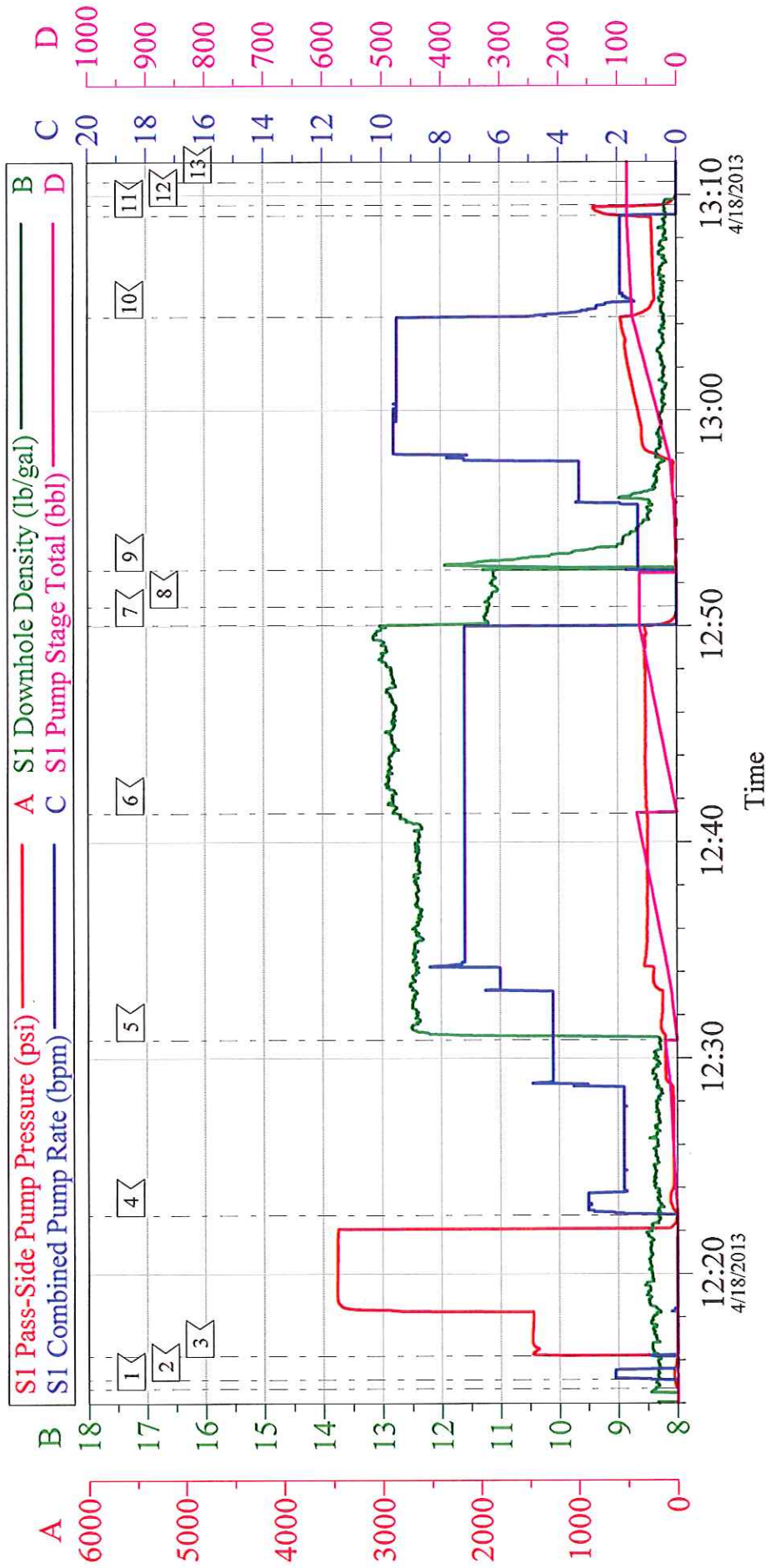
Sold To #: 300721	Ship To #: 2993015	Quote #:	Sales Order #: 900369347
Customer: WPX ENERGY ROCKY MOUNTAIN LLC-EBUS		Customer Rep: Towers, Ron	
Well Name: RWF	Well #: 314-29	API/UWI #: 05-123-21667	
Field: Rulison	City (SAP): RIFLE	County/Parish: Garfield	State: Colorado
Legal Description:			
Lat: N 39.49 deg. OR N 39 deg. 29 min. 24.432 secs.		Long: W 107.919 deg. OR W -108 deg. 4 min. 52.842 secs.	
Contractor: NABORS 577		Rig/Platform Name/Num: NABORS 577	
Job Purpose: Cement Surface Casing			Ticket Amount:
Well Type: Development Well		Job Type: Cement Surface Casing	
Sales Person: MAYO, MARK		Srv Supervisor: ARNOLD, EDWARD	MBU ID Emp #: 439784

Activity Description	Date/Time	Cht #	Rate bbl/min	Volume bbl		Pressure psig		Comments
				Stage	Total	Tubing	Casing	
Call Out	04/18/2013 02:00							Crew called out.
Pre-Convoy Safety Meeting	04/18/2013 03:15							Including entire cement crew, discuss hazards, route, and safety.
Crew Leave Yard	04/18/2013 03:30							Leave yard for location.
Arrive At Loc	04/18/2013 05:00							Requested on location at 0800.
Assessment Of Location Safety Meeting	04/18/2013 10:30							Including entire cement crew, discussed hazards, and rig up.
Pre-Rig Up Safety Meeting	04/18/2013 10:50							
Rig-Up Equipment	04/18/2013 11:00							1 Elite # 9; 1 660 Bulk Truck; 1 hard line to rig floor; 2 lines to rig tank; 9 5/8" compact head.
Rig-Up Completed	04/18/2013 11:45							
Pre-Job Safety Meeting	04/18/2013 11:50							Including everyone on location. Discussed hazards, emergency situations, and job procedure.
Start Job	04/18/2013 12:14							TD 1130; TP 1125; SJ 44.22; OH 13 1/2"; CASING 9 5/8" 32.3# H-40; MUD 9.8 PPG.
Pump Water	04/18/2013 12:15		2	2			37.0	Fresh water ahead to fill lines.
Test Lines	04/18/2013 12:16				3370			Test line to psi, Found no leaks, good test.
Pump Spacer 1	04/18/2013 12:22		4	20			120.0	20 BBL's fresh water.

Cementing Job Log

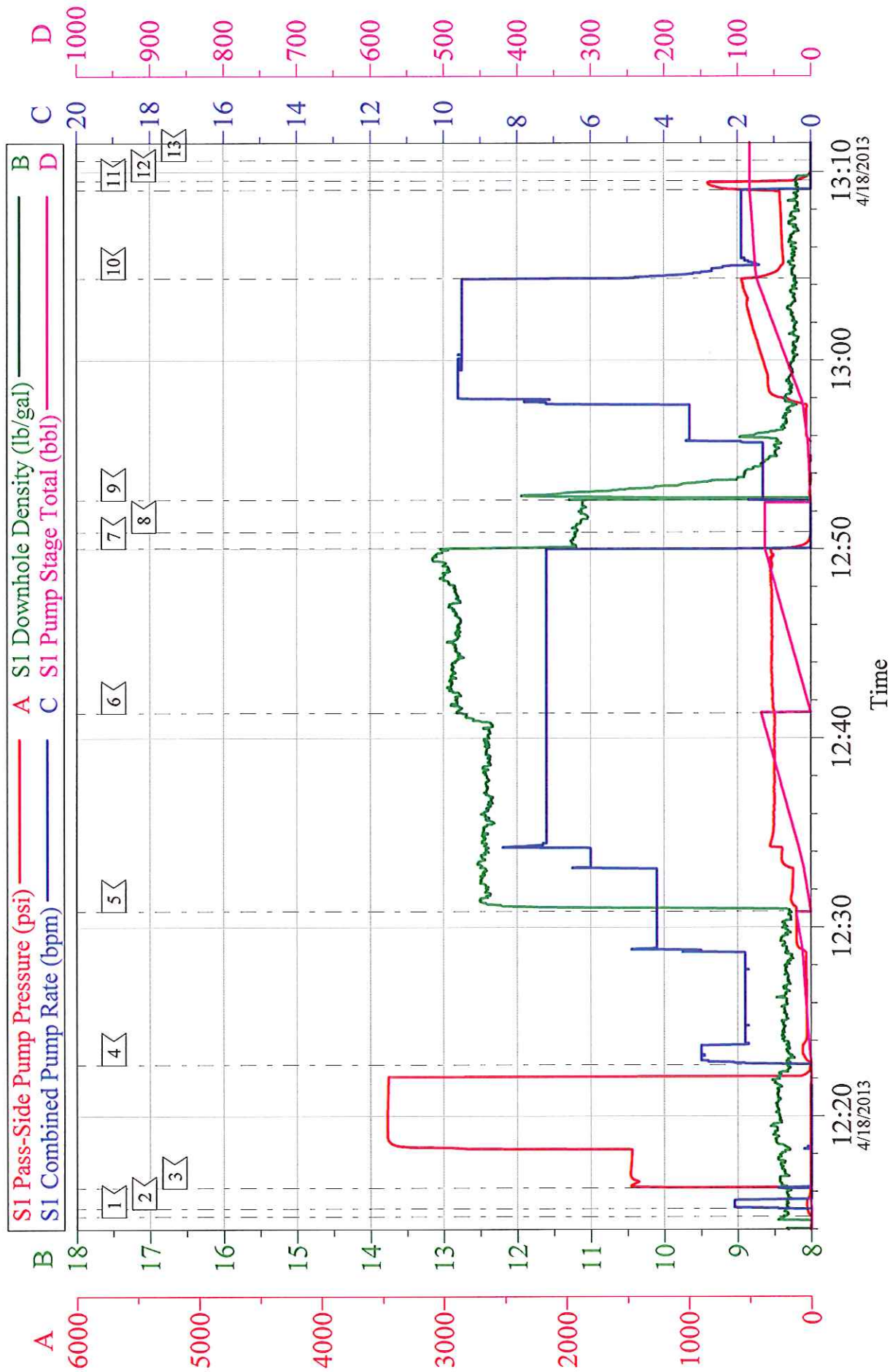
Activity Description	Date/Time	Cht #	Rate bbl/ min	Volume bbl		Pressure psig		Comments
				Stage	Total	Tubing	Casing	
Pump Lead Cement	04/18/2013 12:30		7	67.8			294.0	160 sks Lead cement, 12.3 ppg, 2.38 cf3, 13.75 gal/sk.
Pump Tail Cement	04/18/2013 12:41		7	60.1			320.0	160 sks Tail cement, 12.8 ppg, 2.11 cf3, 11.75 gal/sk.
Shutdown	04/18/2013 12:50							
Drop Plug	04/18/2013 12:51							Plug left Container.
Pump Displacement	04/18/2013 12:52		10	75			567.0	Fresh water displacement.
Slow Rate	04/18/2013 13:04		2	10			280.0	Slow rate last 10 BBL's of displacement prior to bumping the plug.
Bump Plug	04/18/2013 13:09						840.0	Plug landed. Took to psi.
Check Floats	04/18/2013 13:09							Floats Held. 3/4 BBL's back.
End Job	04/18/2013 13:10							Job Complete. Good circulation during job, 25 Bbl.'s of good cement to surface.
Pre-Rig Down Safety Meeting	04/18/2013 13:15							Including entire cement crew, discussed hazards and safety.
Rig-Down Equipment	04/18/2013 13:20							
Pre-Convoy Safety Meeting	04/18/2013 14:15							Including entire cement crew, discussed hazards, route, and safety.
Crew Leave Location	04/18/2013 14:30							
Other	04/18/2013 14:30							Thank You for using Halliburton, Ed Arnold and Crew.

WPX - RWF 314-29 9 5/8" SURFACE



Customer: WPX	Job Date: 18-Apr-2013	Sales Order #: 900369347
Well Description: RWF 314-29	Job Type: SURFACE	ADC Used: YES
Company Rep: ANDREW BRUNK	Cement Supervisor: ED ARNOLD	Elite #: DAN SINCLAIR

WPX - RWF 314-29 9 5/8" SURFACE



Customer: WPX	Job Date: 18-Apr-2013	Sales Order #: 900369347
Well Description: RWF 314-29	Job Type: SURFACE	ADC Used: YES
Company Rep: ANDREW BRUNK	Cement Supervisor: ED ARNOLD	Elite #9: DAN SINCLAIR