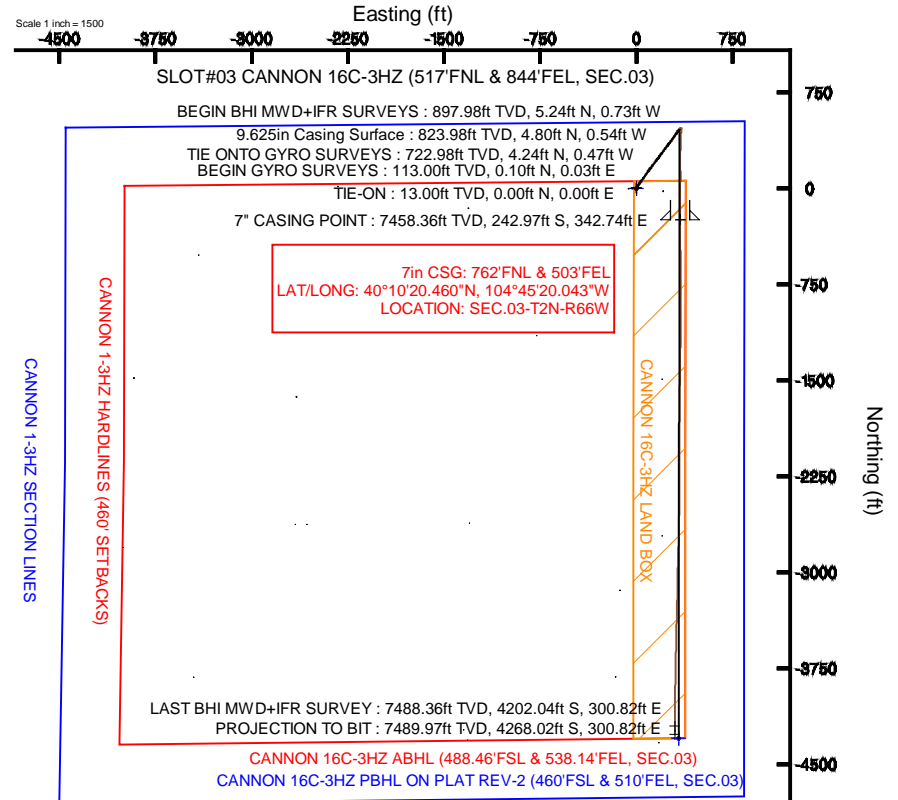
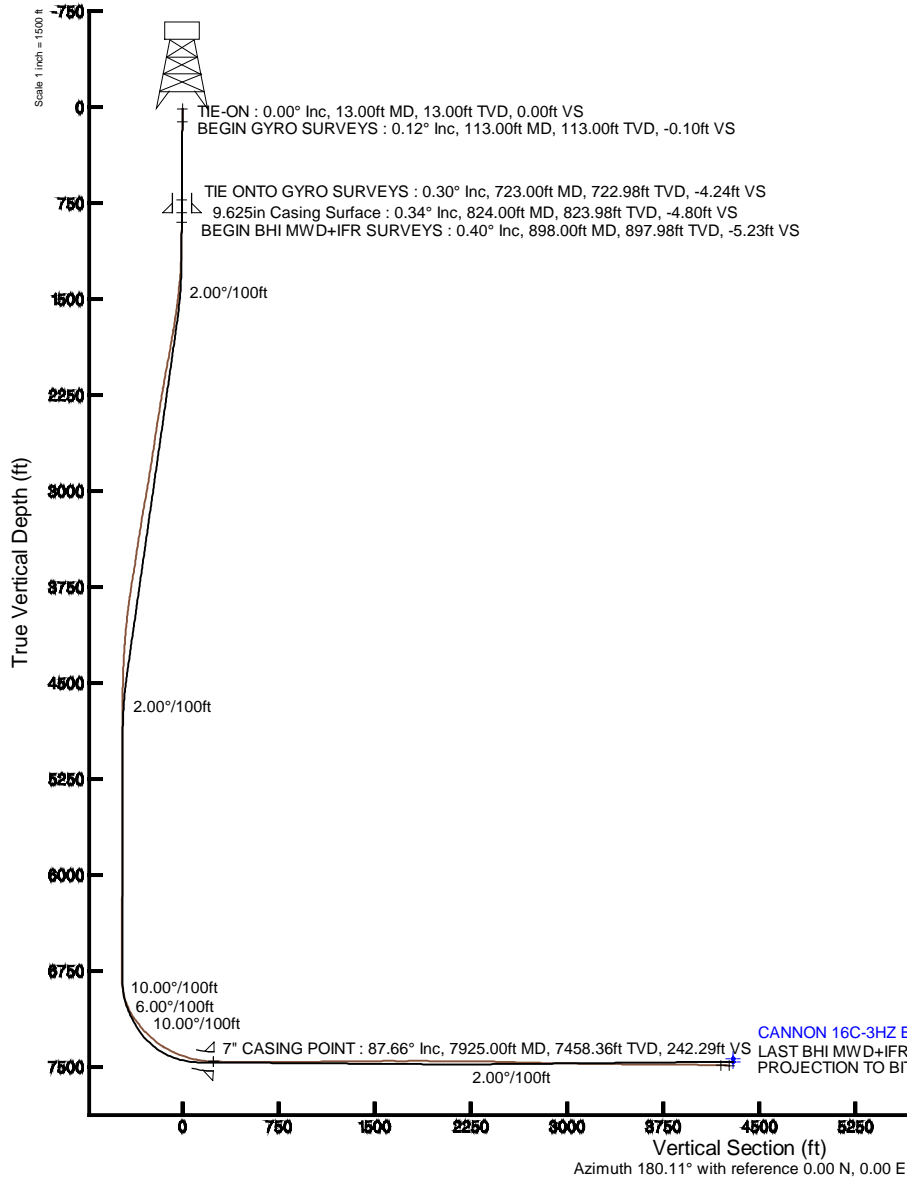


# KERR-MCGEE OIL & GAS ONSHORE LP

Location: COLORADO Slot: SLOT#03 CANNON 16C-3HZ (517'FNL & 844'FEL, SEC.03)  
 Field: WELD COUNTY (KERR MCGEE) Well: CANNON 16C-3HZ  
 Facility: SEC.03-T2N-R66W Wellbore: CANNON 16C-3HZ PWB

Plot reference wellpath is CANNON 16C-3HZ (REV-B.0) PWP	
True vertical depths are referenced to ENSIGN 138 (RKB)	Grid System: NAD83 / Lambert Colorado SP, Northern Zone (501), US feet
Measured depths are referenced to ENSIGN 138 (RKB)	North Reference: True north
ENSIGN 138 (RKB) to Mean Sea Level: 5035 feet	Scale: True distance
Mean Sea Level to Mud line (At Slot: SLOT#03 CANNON 16C-3HZ (517'FNL & 844'FEL, SEC.03)): 0 feet	Depths are in feet
Coordinates are in feet referenced to Slot	Created by: robiea01 on 19Jul/2013



CANNON 16C-3HZ BHL ON PLAT REV-2 (460'FSL & 510'FEL, SEC.03)  
 LAST BHI MWD+IFR SURVEY : 88.60° Inc, 11885.00ft MD, 7488.36ft TVD, 4201.43ft VS  
 PROJECTION TO BIT : 88.60° Inc, 11951.00ft MD, 7489.97ft TVD, 4267.41ft VS

Scale 1 inch = 1500 ft



# Actual Wellpath Report

CANNON 16C-3HZ AWP

Page 1 of 6



## REFERENCE WELLPATH IDENTIFICATION

Operator	<b>KERR-MCGEE OIL &amp; GAS ONSHORE LP</b>	Slot	<b>SLOT#03 CANNON 16C-3HZ (517'FNL &amp; 844'FEL, SEC.03)</b>
Area	<b>COLORADO</b>	Well	<b>CANNON 16C-3HZ</b>
Field	<b>WELD COUNTY (KERR MCGEE)</b>	Wellbore	<b>CANNON 16C-3HZ AWP</b>
Facility	<b>SEC.03-T2N-R66W</b>		

## REPORT SETUP INFORMATION

Projection System	<b>NAD83 / Lambert Colorado SP, Northern Zone (501), US feet</b>	Software System	<b>WellArchitect® 4.0.0</b>
North Reference	<b>True</b>	User	<b>Robiale01</b>
Scale	<b>0.999958</b>	Report Generated	<b>19/Jul/2013 at 12:20</b>
Convergence at slot	<b>n/a</b>	Database/Source file	<b>WA_ANADARKO/CANNON_16C-3HZ_AWP.xml</b>

## WELLPATH LOCATION

	Local coordinates		Grid coordinates		Geographic coordinates	
	North[ft]	East[ft]	Easting[US ft]	Northing[US ft]	Latitude	Longitude
Slot Location	0.40	60.01	3207681.19	1306743.33	<b>40°10'22.861"N</b>	<b>104°45'24.458"W</b>
Facility Reference Pt			3207621.19	1306742.42	<b>40°10'22.857"N</b>	<b>104°45'25.231"W</b>
Field Reference Pt			<b>3197771.84</b>	<b>1268891.29</b>	40°04'09.600"N	104°47'36.000"W

## WELLPATH DATUM

Calculation method	<b>Minimum curvature</b>	ENSIGN 138 (RKB) to Facility Vertical Datum	<b>5035.00ft</b>
Horizontal Reference Pt	<b>Slot</b>	ENSIGN 138 (RKB) to Mean Sea Level	<b>5035.00ft</b>
Vertical Reference Pt	<b>ENSIGN 138 (RKB)</b>	ENSIGN 138 (RKB) to Mud Line at Slot (SLOT#03 CANNON 16C-3HZ (517'FNL & 844'FEL, SEC.03))	<b>5035.00ft</b>
MD Reference Pt	<b>ENSIGN 138 (RKB)</b>	Section Origin	<b>N 0.00, E 0.00 ft</b>
Field Vertical Reference	<b>Mean Sea Level</b>	Section Azimuth	<b>175.97°</b>



# Actual Wellpath Report

CANNON 16C-3HZ AWP

Page 2 of 6



REFERENCE WELLPATH IDENTIFICATION				
Operator	KERR-MCGEE OIL & GAS ONSHORE LP		Slot	SLOT#03 CANNON 16C-3HZ (517'FNL & 844'FEL, SEC.03)
Area	COLORADO		Well	CANNON 16C-3HZ
Field	WELD COUNTY (KERR MCGEE)		Wellbore	CANNON 16C-3HZ AWB
Facility	SEC.03-T2N-R66W			

WELLPATH DATA (126 stations) † = interpolated/extrapolated station										
MD [ft]	Inclination [°]	Azimuth [°]	TVD [ft]	Vert Sect [ft]	North [ft]	East [ft]	Latitude	Longitude	DLS [°/100ft]	Comments
0.00†	0.000	17.770	0.00	0.00	0.00	0.00	40°10'22.861"N	104°45'24.458"W	0.00	
13.00	0.000	17.770	13.00	0.00	0.00	0.00	40°10'22.861"N	104°45'24.458"W	0.00	TIE-ON
113.00	0.120	17.770	113.00	-0.10	0.10	0.03	40°10'22.862"N	104°45'24.458"W	0.12	BEGIN GYRO SURVEYS
213.00	0.840	359.160	213.00	-0.93	0.93	0.05	40°10'22.870"N	104°45'24.457"W	0.73	
313.00	0.460	14.770	312.99	-2.04	2.05	0.14	40°10'22.881"N	104°45'24.456"W	0.42	
413.00	0.430	325.130	412.99	-2.74	2.75	0.03	40°10'22.888"N	104°45'24.458"W	0.37	
513.00	0.490	331.520	512.98	-3.45	3.43	-0.39	40°10'22.895"N	104°45'24.463"W	0.08	
613.00	0.040	25.650	612.98	-3.87	3.84	-0.57	40°10'22.899"N	104°45'24.465"W	0.47	
713.00	0.370	14.580	712.98	-4.21	4.18	-0.48	40°10'22.902"N	104°45'24.464"W	0.33	
723.00	0.300	3.800	722.98	-4.26	4.24	-0.47	40°10'22.903"N	104°45'24.464"W	0.94	TIE ONTO GYRO SURVEYS
898.00	0.400	331.500	897.98	-5.27	5.24	-0.73	40°10'22.913"N	104°45'24.467"W	0.12	BEGIN BHI MWD+IFR SURVEYS
989.00	0.300	326.500	988.98	-5.77	5.71	-1.01	40°10'22.917"N	104°45'24.471"W	0.11	
1080.00	1.300	49.300	1079.97	-6.59	6.59	-0.36	40°10'22.926"N	104°45'24.463"W	1.43	
1170.00	3.500	51.400	1169.88	-8.76	8.97	2.56	40°10'22.950"N	104°45'24.425"W	2.45	
1260.00	4.700	43.200	1259.65	-12.83	13.37	7.23	40°10'22.993"N	104°45'24.365"W	1.48	
1351.00	6.300	36.300	1350.23	-19.16	20.11	12.74	40°10'23.060"N	104°45'24.294"W	1.90	
1442.00	7.600	34.400	1440.56	-27.68	29.10	19.10	40°10'23.149"N	104°45'24.212"W	1.45	
1533.00	9.100	36.500	1530.59	-37.87	39.85	26.78	40°10'23.255"N	104°45'24.113"W	1.68	
1568.00	9.000	36.900	1565.16	-42.04	44.26	30.07	40°10'23.298"N	104°45'24.071"W	0.34	
1659.00	10.400	38.900	1654.86	-53.43	56.35	39.50	40°10'23.418"N	104°45'23.949"W	1.58	
1751.00	11.500	36.700	1745.18	-66.46	70.16	50.19	40°10'23.554"N	104°45'23.811"W	1.28	
1843.00	11.900	30.500	1835.27	-81.23	85.69	60.49	40°10'23.708"N	104°45'23.679"W	1.43	
1934.00	11.800	29.800	1924.33	-96.68	101.85	69.88	40°10'23.867"N	104°45'23.558"W	0.19	
2024.00	12.300	29.500	2012.35	-112.32	118.18	79.17	40°10'24.029"N	104°45'23.438"W	0.56	
2113.00	12.100	35.000	2099.34	-127.47	134.07	89.19	40°10'24.186"N	104°45'23.309"W	1.32	
2204.00	11.600	33.100	2188.40	-142.17	149.55	99.66	40°10'24.339"N	104°45'23.174"W	0.70	
2296.00	11.500	38.000	2278.54	-156.36	164.52	110.35	40°10'24.487"N	104°45'23.036"W	1.07	
2387.00	11.300	38.600	2367.75	-169.66	178.64	121.50	40°10'24.626"N	104°45'22.893"W	0.26	
2477.00	11.900	38.200	2455.91	-183.01	192.82	132.74	40°10'24.766"N	104°45'22.748"W	0.67	
2569.00	10.500	38.200	2546.15	-196.24	206.87	143.79	40°10'24.905"N	104°45'22.606"W	1.52	
2660.00	10.500	38.100	2635.63	-208.53	219.91	154.03	40°10'25.034"N	104°45'22.474"W	0.02	
2751.00	11.000	37.100	2725.03	-221.22	233.36	164.39	40°10'25.167"N	104°45'22.340"W	0.59	
2842.00	12.000	38.000	2814.20	-234.79	247.74	175.45	40°10'25.309"N	104°45'22.198"W	1.12	
2933.00	10.800	38.700	2903.41	-248.08	261.85	186.60	40°10'25.449"N	104°45'22.054"W	1.33	
3025.00	12.600	38.700	2993.49	-261.78	276.40	198.27	40°10'25.592"N	104°45'21.904"W	1.96	
3115.00	12.400	37.700	3081.36	-276.20	291.71	210.31	40°10'25.744"N	104°45'21.749"W	0.33	
3207.00	12.200	37.600	3171.25	-290.84	307.23	222.29	40°10'25.897"N	104°45'21.594"W	0.22	
3298.00	11.600	37.000	3260.29	-304.93	322.15	233.66	40°10'26.045"N	104°45'21.448"W	0.67	
3393.00	11.600	40.500	3353.35	-318.94	337.04	245.61	40°10'26.192"N	104°45'21.294"W	0.74	
3488.00	11.100	42.500	3446.49	-332.04	351.05	257.99	40°10'26.330"N	104°45'21.134"W	0.67	
3583.00	10.400	37.700	3539.83	-344.73	364.58	269.41	40°10'26.464"N	104°45'20.987"W	1.20	
3678.00	11.100	30.500	3633.16	-358.67	379.24	279.30	40°10'26.609"N	104°45'20.860"W	1.59	
3773.00	10.800	33.400	3726.44	-373.27	394.55	288.84	40°10'26.760"N	104°45'20.737"W	0.66	
3867.00	9.500	30.400	3818.96	-386.66	408.60	297.61	40°10'26.899"N	104°45'20.624"W	1.49	
3962.00	8.700	27.300	3912.77	-399.26	421.74	304.88	40°10'27.029"N	104°45'20.530"W	0.99	



# Actual Wellpath Report

CANNON 16C-3HZ AWP

Page 3 of 6



REFERENCE WELLPATH IDENTIFICATION			
Operator	KERR-MCGEE OIL & GAS ONSHORE LP	Slot	SLOT#03 CANNON 16C-3HZ (517'FNL & 844'FEL, SEC.03)
Area	COLORADO	Well	CANNON 16C-3HZ
Field	WELD COUNTY (KERR MCGEE)	Wellbore	CANNON 16C-3HZ AWP
Facility	SEC.03-T2N-R66W		

WELLPATH DATA (126 stations) † = interpolated/extrapolated station										
MD [ft]	Inclination [°]	Azimuth [°]	TVD [ft]	Vert Sect [ft]	North [ft]	East [ft]	Latitude	Longitude	DLS [°/100ft]	Comments
4057.00	6.300	29.700	4006.95	-409.74	432.66	310.76	40°10'27.137"N	104°45'20.455"W	2.55	
4151.00	5.700	27.600	4100.43	-418.00	441.27	315.47	40°10'27.222"N	104°45'20.394"W	0.68	
4246.00	5.300	35.100	4195.00	-425.42	449.04	320.18	40°10'27.298"N	104°45'20.333"W	0.87	
4341.00	3.900	39.800	4289.69	-431.16	455.12	324.77	40°10'27.358"N	104°45'20.274"W	1.52	
4435.00	4.000	45.200	4383.46	-435.60	459.88	329.15	40°10'27.406"N	104°45'20.218"W	0.41	
4530.00	3.200	68.600	4478.28	-438.56	463.18	333.97	40°10'27.438"N	104°45'20.156"W	1.74	
4625.00	2.000	73.700	4573.18	-439.70	464.62	338.03	40°10'27.452"N	104°45'20.103"W	1.29	
4719.00	0.800	72.300	4667.15	-440.21	465.28	340.23	40°10'27.459"N	104°45'20.075"W	1.28	
4814.00	0.300	14.900	4762.15	-440.60	465.72	340.92	40°10'27.463"N	104°45'20.066"W	0.72	
5202.00	0.700	272.900	5150.14	-441.84	466.82	338.82	40°10'27.474"N	104°45'20.093"W	0.21	
5580.00	0.100	210.300	5528.13	-441.85	466.65	336.34	40°10'27.472"N	104°45'20.125"W	0.17	
5959.00	0.700	70.900	5907.12	-442.18	467.13	338.36	40°10'27.477"N	104°45'20.099"W	0.21	
6337.00	1.900	63.300	6285.02	-445.19	470.70	346.14	40°10'27.512"N	104°45'19.999"W	0.32	
6433.00	1.600	68.200	6380.97	-446.22	471.91	348.81	40°10'27.524"N	104°45'19.964"W	0.35	
6527.00	0.800	33.400	6474.95	-447.14	472.94	350.39	40°10'27.535"N	104°45'19.944"W	1.11	
6621.00	0.400	40.700	6568.94	-447.89	473.74	350.97	40°10'27.542"N	104°45'19.937"W	0.43	
6716.00	0.300	70.700	6663.94	-448.19	474.07	351.42	40°10'27.546"N	104°45'19.931"W	0.22	
6810.00	0.700	160.000	6757.94	-447.71	473.62	351.85	40°10'27.541"N	104°45'19.925"W	0.81	
6857.00	2.100	178.000	6804.93	-446.57	472.49	351.97	40°10'27.530"N	104°45'19.924"W	3.09	
6905.00	5.500	186.300	6852.81	-443.43	469.32	351.75	40°10'27.499"N	104°45'19.927"W	7.16	
6952.00	9.800	184.700	6899.38	-437.25	463.09	351.18	40°10'27.437"N	104°45'19.934"W	9.16	
6999.00	13.200	186.500	6945.43	-428.02	453.77	350.24	40°10'27.345"N	104°45'19.946"W	7.27	
7046.00	18.400	184.300	6990.64	-415.40	441.03	349.08	40°10'27.219"N	104°45'19.961"W	11.14	
7093.00	23.600	181.500	7034.51	-398.68	424.22	348.27	40°10'27.053"N	104°45'19.971"W	11.26	
7140.00	29.700	181.300	7076.49	-377.71	403.15	347.76	40°10'26.845"N	104°45'19.978"W	12.98	
7187.00	34.300	181.300	7116.34	-352.91	378.26	347.20	40°10'26.599"N	104°45'19.985"W	9.79	
7234.00	37.500	182.200	7154.41	-325.50	350.72	346.35	40°10'26.327"N	104°45'19.996"W	6.90	
7281.00	40.400	182.900	7190.96	-296.15	321.21	345.03	40°10'26.035"N	104°45'20.013"W	6.24	
7328.00	43.300	182.100	7225.96	-265.00	289.88	343.67	40°10'25.726"N	104°45'20.031"W	6.27	
7374.00	46.700	180.500	7258.49	-232.62	257.37	342.94	40°10'25.404"N	104°45'20.040"W	7.79	
7420.00	50.000	180.000	7289.05	-198.35	223.00	342.80	40°10'25.065"N	104°45'20.042"W	7.22	
7468.00	53.800	179.100	7318.67	-160.66	185.24	343.10	40°10'24.692"N	104°45'20.038"W	8.05	
7515.00	58.000	178.800	7345.01	-121.80	146.34	343.82	40°10'24.307"N	104°45'20.029"W	8.95	
7563.00	62.400	180.100	7368.86	-80.24	104.70	344.21	40°10'23.896"N	104°45'20.024"W	9.46	
7610.00	66.600	180.700	7389.09	-37.95	62.29	343.91	40°10'23.476"N	104°45'20.028"W	9.01	
7659.00	70.200	180.500	7407.12	7.45	16.74	343.43	40°10'23.026"N	104°45'20.034"W	7.36	
7706.00	72.700	180.500	7422.08	51.87	-27.82	343.04	40°10'22.586"N	104°45'20.039"W	5.32	
7753.00	74.700	180.600	7435.27	96.83	-72.92	342.61	40°10'22.140"N	104°45'20.044"W	4.26	
7800.00	79.600	180.300	7445.72	142.50	-118.73	342.25	40°10'21.688"N	104°45'20.049"W	10.44	
7847.00	83.300	179.700	7452.70	188.85	-165.20	342.25	40°10'21.228"N	104°45'20.049"W	7.97	
7879.00	85.800	179.600	7455.74	220.64	-197.05	342.44	40°10'20.914"N	104°45'20.047"W	7.82	
7925.00†	87.661	179.652	7458.36	266.47	-242.97	342.74	40°10'20.460"N	104°45'20.043"W	4.05	7" CASING POINT
7968.00	89.400	179.700	7459.47	309.37	-285.96	342.99	40°10'20.035"N	104°45'20.040"W	4.05	
8062.00	89.600	179.800	7460.29	403.16	-379.95	343.40	40°10'19.106"N	104°45'20.034"W	0.24	
8157.00	89.700	179.700	7460.87	497.95	-474.95	343.81	40°10'18.167"N	104°45'20.029"W	0.15	



# Actual Wellpath Report

CANNON 16C-3HZ AWP

Page 4 of 6



## REFERENCE WELLPATH IDENTIFICATION

Operator	KERR-MCGEE OIL & GAS ONSHORE LP	Slot	SLOT#03 CANNON 16C-3HZ (517'FNL & 844'FEL, SEC.03)
Area	COLORADO	Well	CANNON 16C-3HZ
Field	WELD COUNTY (KERR MCGEE)	Wellbore	CANNON 16C-3HZ AWP
Facility	SEC.03-T2N-R66W		

## WELLPATH DATA (126 stations)

MD [ft]	Inclination [°]	Azimuth [°]	TVD [ft]	Vert Sect [ft]	North [ft]	East [ft]	Latitude	Longitude	DLS [°/100ft]	Comments
8251.00	89.900	179.500	7461.20	591.76	-568.95	344.47	40°10'17.239"N	104°45'20.021"W	0.30	
8347.00	89.800	178.700	7461.45	687.61	-664.93	345.98	40°10'16.290"N	104°45'20.001"W	0.84	
8443.00	90.200	180.100	7461.45	783.44	-760.93	346.98	40°10'15.341"N	104°45'19.988"W	1.52	
8539.00	90.100	179.600	7461.20	879.22	-856.93	347.23	40°10'14.393"N	104°45'19.985"W	0.53	
8634.00	90.600	180.300	7460.62	973.99	-951.92	347.32	40°10'13.454"N	104°45'19.984"W	0.91	
8730.00	90.300	180.400	7459.86	1069.70	-1047.92	346.73	40°10'12.505"N	104°45'19.992"W	0.33	
8824.00	90.900	181.000	7458.88	1163.38	-1141.91	345.58	40°10'11.577"N	104°45'20.006"W	0.90	
8919.00	90.600	180.900	7457.63	1258.01	-1236.88	344.01	40°10'10.638"N	104°45'20.027"W	0.33	
9109.00	90.500	181.000	7455.81	1447.28	-1426.85	340.86	40°10'08.761"N	104°45'20.067"W	0.07	
9203.00	90.500	180.900	7454.99	1540.92	-1520.83	339.30	40°10'07.832"N	104°45'20.087"W	0.11	
9298.00	89.900	180.900	7454.66	1635.57	-1615.82	337.81	40°10'06.893"N	104°45'20.107"W	0.63	
9487.00	90.100	180.000	7454.66	1823.99	-1804.81	336.32	40°10'05.026"N	104°45'20.126"W	0.49	
9678.00	89.700	179.100	7454.99	2014.62	-1995.80	337.82	40°10'03.138"N	104°45'20.106"W	0.52	
9773.00	90.300	181.200	7454.99	2109.36	-2090.80	337.57	40°10'02.200"N	104°45'20.110"W	2.30	
9868.00	89.100	179.600	7455.49	2204.07	-2185.79	336.91	40°10'01.261"N	104°45'20.118"W	2.11	
9963.00	89.300	180.300	7456.82	2298.83	-2280.78	336.99	40°10'00.322"N	104°45'20.117"W	0.77	
10058.00	88.900	180.200	7458.31	2393.55	-2375.77	336.58	40°09'59.384"N	104°45'20.123"W	0.43	
10152.00	88.400	181.200	7460.52	2487.20	-2469.73	335.43	40°09'58.455"N	104°45'20.137"W	1.19	
10247.00	87.900	180.700	7463.59	2581.79	-2564.67	333.86	40°09'57.517"N	104°45'20.158"W	0.74	
10341.00	88.000	180.800	7466.95	2675.41	-2658.60	332.63	40°09'56.589"N	104°45'20.174"W	0.15	
10435.00	89.300	181.700	7469.17	2768.98	-2752.55	330.58	40°09'55.660"N	104°45'20.200"W	1.68	
10529.00	89.500	182.000	7470.15	2862.48	-2846.49	327.54	40°09'54.732"N	104°45'20.239"W	0.38	
10623.00	88.700	181.600	7471.63	2955.98	-2940.44	324.59	40°09'53.804"N	104°45'20.277"W	0.95	
10719.00	88.700	181.100	7473.81	3051.53	-3036.38	322.33	40°09'52.855"N	104°45'20.306"W	0.52	
10814.00	88.600	180.900	7476.04	3146.14	-3131.34	320.67	40°09'51.917"N	104°45'20.328"W	0.24	
10908.00	89.400	181.300	7477.68	3239.75	-3225.31	318.87	40°09'50.988"N	104°45'20.351"W	0.95	
11003.00	89.400	181.500	7478.68	3334.32	-3320.28	316.55	40°09'50.050"N	104°45'20.381"W	0.21	
11098.00	89.500	182.200	7479.59	3428.81	-3415.22	313.48	40°09'49.112"N	104°45'20.420"W	0.74	
11192.00	89.400	180.900	7480.49	3522.36	-3509.18	310.94	40°09'48.183"N	104°45'20.453"W	1.39	
11287.00	89.500	181.300	7481.40	3616.97	-3604.16	309.11	40°09'47.245"N	104°45'20.477"W	0.43	
11382.00	89.400	181.200	7482.32	3711.57	-3699.13	307.04	40°09'46.306"N	104°45'20.503"W	0.15	
11477.00	89.500	181.000	7483.23	3806.18	-3794.11	305.22	40°09'45.367"N	104°45'20.527"W	0.24	
11666.00	89.800	180.800	7484.38	3994.48	-3983.08	302.25	40°09'43.500"N	104°45'20.565"W	0.19	
11761.00	88.800	180.400	7485.54	4089.16	-4078.07	301.25	40°09'42.561"N	104°45'20.578"W	1.13	
11885.00	88.600	180.000	7488.36	4212.79	-4202.04	300.82	40°09'41.336"N	104°45'20.583"W	0.36	LAST BHI MWD+IFR SURVEY
11951.00	88.600	180.000	7489.97	4278.61	-4268.02	300.82	40°09'40.684"N	104°45'20.583"W	0.00	PROJECTION TO BIT



# Actual Wellpath Report

CANNON 16C-3HZ AWP

Page 5 of 6



## REFERENCE WELLPATH IDENTIFICATION

Operator	KERR-MCGEE OIL & GAS ONSHORE LP	Slot	SLOT#03 CANNON 16C-3HZ (517'FNL & 844'FEL, SEC.03)
Area	COLORADO	Well	CANNON 16C-3HZ
Field	WELD COUNTY (KERR MCGEE)	Wellbore	CANNON 16C-3HZ AWP
Facility	SEC.03-T2N-R66W		

## HOLE & CASING SECTIONS - Ref Wellbore: CANNON 16C-3HZ AWP Ref Wellpath: CANNON 16C-3HZ AWP

String/Diameter	Start MD [ft]	End MD [ft]	Interval [ft]	Start TVD [ft]	End TVD [ft]	Start N/S [ft]	Start E/W [ft]	End N/S [ft]	End E/W [ft]
13.5in Open Hole	13.00	824.00	811.00	13.00	823.98	0.00	0.00	4.80	-0.54
9.625in Casing Surface	13.00	824.00	811.00	13.00	823.98	0.00	0.00	4.80	-0.54
8.75in Open Hole	824.00	7936.00	7112.00	823.98	7458.77	4.80	-0.54	-253.97	342.81
7in Casing Intermediate	13.00	7925.00	7912.00	13.00	7458.36	0.00	0.00	-242.97	342.74
6.125in Open Hole	7936.00	11951.00	4015.00	7458.77	7489.97	-253.97	342.81	-4268.02	300.82

## TARGETS

Name	MD [ft]	TVD [ft]	North [ft]	East [ft]	Grid East [US ft]	Grid North [US ft]	Latitude	Longitude	Shape
CANNON 1-3HZ SECTION LINES		0.00	0.00	0.00	3207681.19	1306743.33	40°10'22.861"N	104°45'24.458"W	polygon
CANNON 16C-3HZ BHL ON PLAT REV-1 (460'FSL & 510'FEL, SEC.03)		7435.00	-4296.48	328.96	3208046.13	1302449.94	40°09'40.403"N	104°45'20.221"W	point
CANNON 16C-3HZ BHL ON PLAT REV-2 (460'FSL & 510'FEL, SEC.03)		7460.00	-4296.48	328.96	3208046.13	1302449.94	40°09'40.403"N	104°45'20.221"W	point
CANNON 16C-3HZ LAND BOX		8100.00	0.00	0.00	3207681.19	1306743.33	40°10'22.861"N	104°45'24.458"W	polygon
CANNON 1-3HZ HARDLINES (460' SETBACKS)		8200.00	0.00	0.00	3207681.19	1306743.33	40°10'22.861"N	104°45'24.458"W	polygon

## WELLPATH COMPOSITION - Ref Wellbore: CANNON 16C-3HZ AWP Ref Wellpath: CANNON 16C-3HZ AWP

Start MD [ft]	End MD [ft]	Positional Uncertainty Model	Log Name/Comment	Wellbore
13.00	723.00	Generic gyro - continuous (Standard)	MS GYRO SURVEYS <113-723>	CANNON 16C-3HZ AWP
723.00	7879.00	NaviTrak (MAGCORR,IFR)	BHI NAVITRAK MWD+IFR 8.75" HOLE <898-7879>	CANNON 16C-3HZ AWP
7879.00	11885.00	NaviTrak (MAGCORR,IFR)	BHI NAVITRAK MWD+IFR 6 1/8" HOLE <7968-11885>	CANNON 16C-3HZ AWP
11885.00	11951.00	Blind Drilling (std)	Projection to bit	CANNON 16C-3HZ AWP



# Actual Wellpath Report

CANNON 16C-3HZ AWP

Page 6 of 6



## REFERENCE WELLPATH IDENTIFICATION

Operator	KERR-MCGEE OIL & GAS ONSHORE LP	Slot	SLOT#03 CANNON 16C-3HZ (517'FNL & 844'FEL, SEC.03)
Area	COLORADO	Well	CANNON 16C-3HZ
Field	WELD COUNTY (KERR MCGEE)	Wellbore	CANNON 16C-3HZ AWP
Facility	SEC.03-T2N-R66W		

## WELLPATH COMMENTS

MD [ft]	Inclination [°]	Azimuth [°]	TVD [ft]	Comment
13.00	0.000	17.770	13.00	TIE-ON
113.00	0.120	17.770	113.00	BEGIN GYRO SURVEYS
723.00	0.300	3.800	722.98	TIE ONTO GYRO SURVEYS
898.00	0.400	331.500	897.98	BEGIN BHI MWD+IFR SURVEYS
7925.00	87.661	179.652	7458.36	7" CASING POINT
11885.00	88.600	180.000	7488.36	LAST BHI MWD+IFR SURVEY
11951.00	88.600	180.000	7489.97	PROJECTION TO BIT