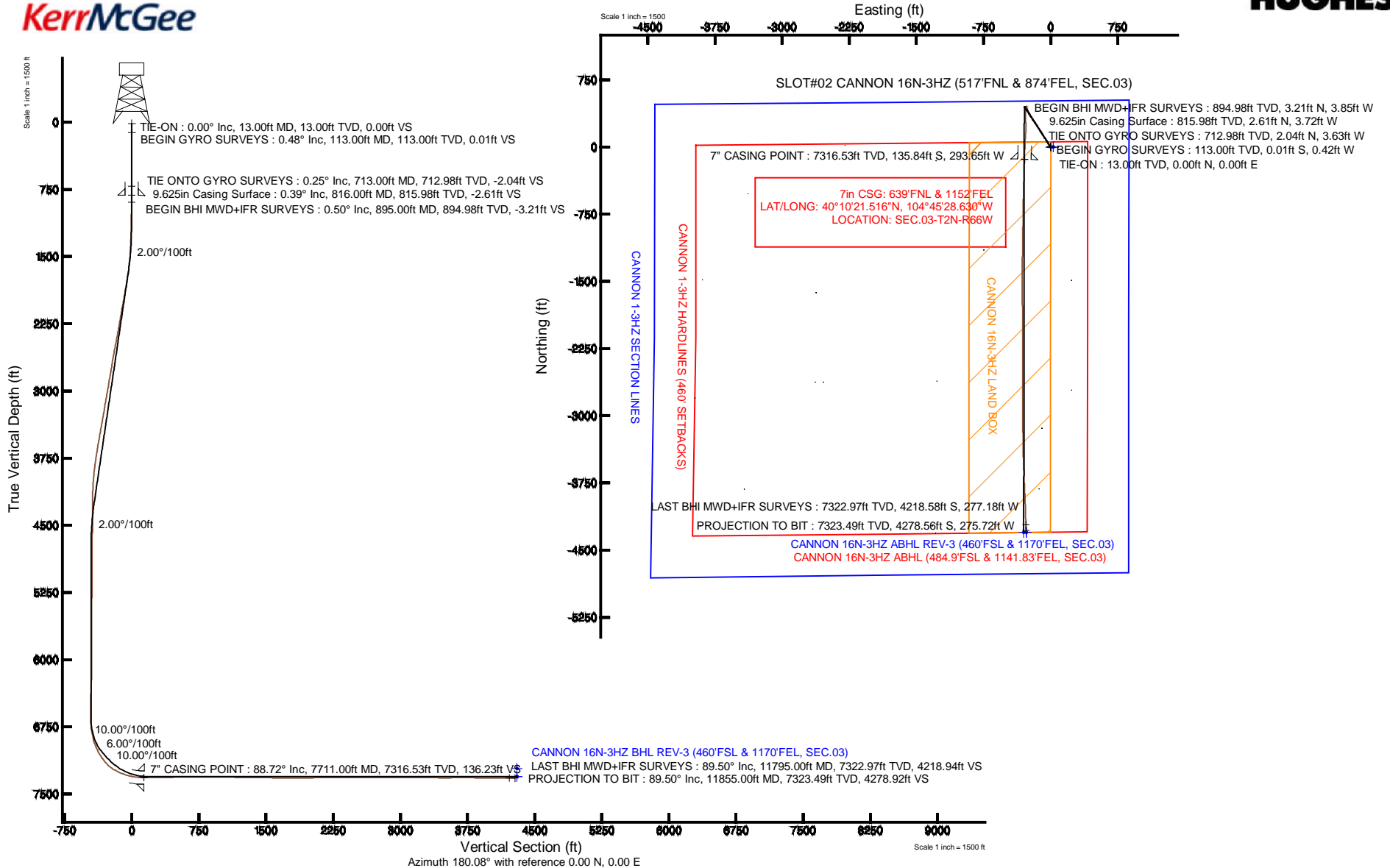


# KERR-MCGEE OIL & GAS ONSHORE LP

Location: COLORADO Slot: SLOT#02 CANNON 16N-3HZ (517'FNL & 874'FEL, SEC.03)  
 Field: WELD COUNTY (KERR MCGEE) Well: CANNON 16N-3HZ  
 Facility: SEC.03-T2N-R66W Wellbore: CANNON 16N-3HZ PWB

Plot reference wellpath is CANNON 16N-3HZ (REV-C.0) PWP	
True vertical depths are referenced to ENSIGN 138 (RKB)	Grid System: NAD83 / Lambert Colorado SP, Northern Zone (501), US feet
Measured depths are referenced to ENSIGN 138 (RKB)	North Reference: True north
ENSGN 138 (RKB) to Mean Sea Level: 5035 feet	Scale: True distance
Mean Sea Level to Mud line (At Slot: SLOT#02 CANNON 16N-3HZ (517'FNL & 874'FEL, SEC.03)): 0 feet	Depths are in feet
Coordinates are in feet referenced to Slot	Created by: rjbale01 on 19/Jul/2013





# Actual Wellpath Report

CANNON 16N-3HZ AWP

Page 1 of 6



## REFERENCE WELLPATH IDENTIFICATION

Operator	<b>KERR-MCGEE OIL &amp; GAS ONSHORE LP</b>	Slot	<b>SLOT#02 CANNON 16N-3HZ (517'FNL &amp; 874'FEL, SEC.03)</b>
Area	<b>COLORADO</b>	Well	<b>CANNON 16N-3HZ</b>
Field	<b>WELD COUNTY (KERR MCGEE)</b>	Wellbore	<b>CANNON 16N-3HZ AWP</b>
Facility	<b>SEC.03-T2N-R66W</b>		

## REPORT SETUP INFORMATION

Projection System	<b>NAD83 / Lambert Colorado SP, Northern Zone (501), US feet</b>	Software System	<b>WellArchitect® 4.0.0</b>
North Reference	<b>True</b>	User	<b>Robiale01</b>
Scale	<b>0.999958</b>	Report Generated	<b>19/Jul/2013 at 13:08</b>
Convergence at slot	<b>n/a</b>	Database/Source file	<b>WA_ANADARKO/CANNON_16N-3HZ_AWP.xml</b>

## WELLPATH LOCATION

	Local coordinates		Grid coordinates		Geographic coordinates	
	North[ft]	East[ft]	Easting[US ft]	Northing[US ft]	Latitude	Longitude
Slot Location	0.10	29.81	3207651.00	1306742.77	<b>40°10'22.858"N</b>	<b>104°45'24.847"W</b>
Facility Reference Pt			3207621.19	1306742.42	<b>40°10'22.857"N</b>	<b>104°45'25.231"W</b>
Field Reference Pt			<b>3197771.84</b>	<b>1268891.29</b>	40°04'09.600"N	104°47'36.000"W

## WELLPATH DATUM

Calculation method	<b>Minimum curvature</b>	ENSIGN 138 (RKB) to Facility Vertical Datum	<b>5035.00ft</b>
Horizontal Reference Pt	<b>Slot</b>	ENSIGN 138 (RKB) to Mean Sea Level	<b>5035.00ft</b>
Vertical Reference Pt	<b>ENSIGN 138 (RKB)</b>	ENSIGN 138 (RKB) to Mud Line at Slot (SLOT#02 CANNON 16N-3HZ (517'FNL & 874'FEL, SEC.03))	<b>5035.00ft</b>
MD Reference Pt	<b>ENSIGN 138 (RKB)</b>	Section Origin	<b>N 0.00, E 0.00 ft</b>
Field Vertical Reference	<b>Mean Sea Level</b>	Section Azimuth	<b>183.69°</b>



# Actual Wellpath Report

CANNON 16N-3HZ AWP

Page 2 of 6



REFERENCE WELLPATH IDENTIFICATION			
Operator	KERR-MCGEE OIL & GAS ONSHORE LP	Slot	SLOT#02 CANNON 16N-3HZ (517'FNL & 874'FEL, SEC.03)
Area	COLORADO	Well	CANNON 16N-3HZ
Field	WELD COUNTY (KERR MCGEE)	Wellbore	CANNON 16N-3HZ AWB
Facility	SEC.03-T2N-R66W		

WELLPATH DATA (113 stations) † = interpolated/extrapolated station											
MD [ft]	Inclination [°]	Azimuth [°]	TVD [ft]	Vert Sect [ft]	North [ft]	East [ft]	Latitude	Longitude	DLS [°/100ft]	Comments	
0.00†	0.000	268.260	0.00	0.00	0.00	0.00	40°10'22.858"N	104°45'24.847"W	0.00		
13.00	0.000	268.260	13.00	0.00	0.00	0.00	40°10'22.858"N	104°45'24.847"W	0.00	TIE-ON	
113.00	0.480	268.260	113.00	0.04	-0.01	-0.42	40°10'22.858"N	104°45'24.852"W	0.48	BEGIN GYRO SURVEYS	
213.00	0.450	290.410	213.00	-0.03	0.11	-1.21	40°10'22.859"N	104°45'24.863"W	0.18		
313.00	0.430	354.720	312.99	-0.52	0.62	-1.61	40°10'22.864"N	104°45'24.868"W	0.47		
413.00	0.720	299.790	412.99	-1.16	1.31	-2.19	40°10'22.871"N	104°45'24.875"W	0.59		
513.00	0.160	250.080	512.99	-1.39	1.57	-2.86	40°10'22.874"N	104°45'24.884"W	0.63		
613.00	0.390	296.340	612.98	-1.46	1.68	-3.30	40°10'22.875"N	104°45'24.890"W	0.30		
713.00	0.250	353.720	712.98	-1.81	2.04	-3.63	40°10'22.878"N	104°45'24.894"W	0.33	TIE ONTO GYRO SURVEYS	
895.00	0.500	347.100	894.98	-2.96	3.21	-3.85	40°10'22.890"N	104°45'24.897"W	0.14	BEGIN BHI MWD+IFR SURVEYS	
986.00	0.600	349.500	985.97	-3.80	4.07	-4.03	40°10'22.898"N	104°45'24.899"W	0.11		
1078.00	0.800	334.000	1077.97	-4.83	5.12	-4.40	40°10'22.909"N	104°45'24.904"W	0.30		
1169.00	0.800	316.100	1168.96	-5.81	6.15	-5.11	40°10'22.919"N	104°45'24.913"W	0.27		
1260.00	2.200	322.700	1259.93	-7.55	7.99	-6.61	40°10'22.937"N	104°45'24.932"W	1.55		
1351.00	3.600	312.700	1350.81	-10.67	11.32	-9.77	40°10'22.970"N	104°45'24.973"W	1.63		
1443.00	4.700	314.700	1442.57	-14.96	15.93	-14.57	40°10'23.015"N	104°45'25.035"W	1.21		
1534.00	6.000	328.400	1533.17	-21.29	22.61	-19.72	40°10'23.081"N	104°45'25.101"W	1.99		
1625.00	7.900	334.200	1623.50	-30.62	32.29	-24.93	40°10'23.177"N	104°45'25.168"W	2.22		
1751.00	9.800	330.100	1747.99	-47.09	49.38	-34.05	40°10'23.346"N	104°45'25.286"W	1.59		
1843.00	11.800	330.300	1838.36	-61.47	64.34	-42.61	40°10'23.494"N	104°45'25.396"W	2.17		
1934.00	12.700	326.400	1927.29	-77.20	80.76	-52.76	40°10'23.656"N	104°45'25.527"W	1.34		
2026.00	12.900	325.900	2017.00	-93.36	97.68	-64.11	40°10'23.823"N	104°45'25.673"W	0.25		
2117.00	11.600	328.000	2105.93	-108.82	113.85	-74.65	40°10'23.983"N	104°45'25.809"W	1.51		
2208.00	11.500	330.100	2195.09	-123.81	129.48	-84.02	40°10'24.137"N	104°45'25.929"W	0.47		
2299.00	12.400	327.100	2284.11	-139.21	145.54	-93.85	40°10'24.296"N	104°45'26.056"W	1.20		
2390.00	11.800	326.800	2373.09	-154.50	161.53	-104.25	40°10'24.454"N	104°45'26.190"W	0.66		
2480.00	12.700	329.100	2461.04	-170.00	177.72	-114.37	40°10'24.614"N	104°45'26.320"W	1.14		
2571.00	11.900	329.500	2549.95	-186.00	194.39	-124.27	40°10'24.779"N	104°45'26.448"W	0.88		
2662.00	11.200	329.100	2639.11	-201.03	210.06	-133.57	40°10'24.934"N	104°45'26.568"W	0.77		
2753.00	11.700	328.100	2728.30	-215.81	225.48	-142.99	40°10'25.086"N	104°45'26.689"W	0.59		
2845.00	11.100	326.800	2818.48	-230.48	240.81	-152.77	40°10'25.238"N	104°45'26.815"W	0.71		
2936.00	12.100	322.800	2907.63	-244.70	255.73	-163.33	40°10'25.385"N	104°45'26.951"W	1.41		
3028.00	12.400	323.300	2997.53	-259.51	271.33	-175.06	40°10'25.539"N	104°45'27.102"W	0.35		
3119.00	12.500	323.300	3086.39	-274.46	287.06	-186.79	40°10'25.695"N	104°45'27.253"W	0.11		
3209.00	11.400	325.600	3174.44	-288.88	302.21	-197.63	40°10'25.844"N	104°45'27.393"W	1.33		
3299.00	11.100	326.400	3262.71	-302.77	316.77	-207.45	40°10'25.988"N	104°45'27.519"W	0.38		
3394.00	12.100	327.700	3355.77	-318.10	332.80	-217.84	40°10'26.147"N	104°45'27.653"W	1.09		
3488.00	12.200	329.200	3447.66	-334.26	349.66	-228.19	40°10'26.313"N	104°45'27.787"W	0.35		
3583.00	11.100	336.600	3540.71	-350.68	366.68	-236.96	40°10'26.481"N	104°45'27.900"W	1.95		
3677.00	10.100	336.400	3633.10	-366.06	382.53	-243.85	40°10'26.638"N	104°45'27.988"W	1.06		
3772.00	9.200	335.200	3726.76	-380.14	397.06	-250.37	40°10'26.782"N	104°45'28.072"W	0.97		
3866.00	8.700	334.800	3819.61	-392.97	410.31	-256.55	40°10'26.913"N	104°45'28.152"W	0.54		
3961.00	7.300	326.100	3913.69	-404.04	421.83	-262.98	40°10'27.026"N	104°45'28.235"W	1.94		
4055.00	5.300	319.000	4007.12	-411.86	430.06	-269.16	40°10'27.108"N	104°45'28.314"W	2.28		
4149.00	4.100	309.300	4100.80	-416.91	435.47	-274.61	40°10'27.161"N	104°45'28.385"W	1.53		



# Actual Wellpath Report

CANNON 16N-3HZ AWP

Page 3 of 6



REFERENCE WELLPATH IDENTIFICATION			
Operator	KERR-MCGEE OIL & GAS ONSHORE LP	Slot	SLOT#02 CANNON 16N-3HZ (517'FNL & 874'FEL, SEC.03)
Area	COLORADO	Well	CANNON 16N-3HZ
Field	WELD COUNTY (KERR MCGEE)	Wellbore	CANNON 16N-3HZ AWB
Facility	SEC.03-T2N-R66W		

WELLPATH DATA (113 stations) † = interpolated/extrapolated station										
MD [ft]	Inclination [°]	Azimuth [°]	TVD [ft]	Vert Sect [ft]	North [ft]	East [ft]	Latitude	Longitude	DLS [°/100ft]	Comments
4243.00	3.000	288.900	4194.63	-419.51	438.39	-279.53	40°10'27.190"N	104°45'28.448"W	1.76	
4338.00	1.500	231.700	4289.56	-419.33	438.43	-282.86	40°10'27.191"N	104°45'28.491"W	2.66	
4432.00	1.300	94.400	4383.55	-418.49	437.58	-282.76	40°10'27.182"N	104°45'28.490"W	2.78	
4528.00	1.400	12.200	4479.53	-419.64	438.64	-281.43	40°10'27.193"N	104°45'28.473"W	1.85	
4716.00	1.500	17.500	4667.47	-424.30	443.24	-280.21	40°10'27.238"N	104°45'28.457"W	0.09	
4904.00	0.300	200.100	4855.45	-426.22	445.12	-279.63	40°10'27.257"N	104°45'28.449"W	0.96	
5282.00	0.900	54.800	5233.44	-427.13	445.90	-277.55	40°10'27.264"N	104°45'28.423"W	0.31	
5662.00	0.600	70.900	5613.40	-429.78	448.27	-273.23	40°10'27.288"N	104°45'28.367"W	0.10	
6039.00	1.000	97.800	5990.37	-430.30	448.47	-268.11	40°10'27.290"N	104°45'28.301"W	0.14	
6418.00	3.100	327.300	6369.20	-438.32	456.65	-270.37	40°10'27.371"N	104°45'28.330"W	1.01	
6512.00	1.100	343.600	6463.14	-441.21	459.66	-271.99	40°10'27.400"N	104°45'28.351"W	2.20	
6670.00	0.400	231.000	6621.13	-442.26	460.76	-272.85	40°10'27.411"N	104°45'28.362"W	0.83	
6702.00	0.900	197.000	6653.12	-441.94	460.45	-273.01	40°10'27.408"N	104°45'28.364"W	1.91	
6749.00	3.500	185.300	6700.09	-440.15	458.67	-273.25	40°10'27.391"N	104°45'28.367"W	5.59	
6796.00	6.200	185.700	6746.91	-436.18	454.72	-273.64	40°10'27.352"N	104°45'28.372"W	5.75	
6843.00	8.900	186.000	6793.50	-430.01	448.57	-274.27	40°10'27.291"N	104°45'28.380"W	5.75	
6891.00	11.200	188.200	6840.76	-421.65	440.27	-275.32	40°10'27.209"N	104°45'28.394"W	4.86	
6938.00	14.300	188.300	6886.60	-411.31	430.00	-276.81	40°10'27.107"N	104°45'28.413"W	6.60	
6986.00	18.900	186.200	6932.58	-397.63	416.40	-278.51	40°10'26.973"N	104°45'28.435"W	9.66	
7080.00	27.800	182.300	7018.80	-360.43	379.29	-281.04	40°10'26.606"N	104°45'28.467"W	9.60	
7177.00	34.400	177.600	7101.83	-310.51	329.25	-280.80	40°10'26.112"N	104°45'28.464"W	7.25	
7224.00	39.400	178.400	7139.40	-282.43	301.05	-279.82	40°10'25.833"N	104°45'28.452"W	10.69	
7273.00	46.100	177.700	7175.36	-249.35	267.83	-278.68	40°10'25.505"N	104°45'28.437"W	13.71	
7320.00	53.100	178.000	7205.81	-213.77	232.08	-277.34	40°10'25.151"N	104°45'28.420"W	14.90	
7371.00	60.200	182.600	7233.84	-171.28	189.53	-277.63	40°10'24.731"N	104°45'28.424"W	15.82	
7418.00	64.800	183.700	7255.53	-129.61	147.92	-279.93	40°10'24.320"N	104°45'28.453"W	10.00	
7468.00	69.700	184.100	7274.86	-83.51	101.93	-283.07	40°10'23.865"N	104°45'28.494"W	9.83	
7516.00	73.900	183.800	7289.85	-37.92	56.45	-286.21	40°10'23.416"N	104°45'28.534"W	8.77	
7565.00	77.400	181.900	7302.00	9.53	9.04	-288.56	40°10'22.947"N	104°45'28.564"W	8.07	
7612.00	82.000	182.000	7310.40	55.74	-37.16	-290.14	40°10'22.491"N	104°45'28.585"W	9.79	
7667.00	87.900	182.200	7315.24	110.48	-91.89	-292.14	40°10'21.950"N	104°45'28.610"W	10.73	
7711.00†	88.718	181.733	7316.53	154.44	-135.84	-293.65	40°10'21.516"N	104°45'28.630"W	2.14	7" CASING POINT
7780.00	90.000	181.000	7317.31	223.38	-204.81	-295.30	40°10'20.834"N	104°45'28.651"W	2.14	
7875.00	90.500	181.600	7316.89	318.30	-299.79	-297.45	40°10'19.895"N	104°45'28.679"W	0.82	
7970.00	91.000	181.600	7315.65	413.22	-394.74	-300.11	40°10'18.957"N	104°45'28.713"W	0.53	
8063.00	91.800	181.500	7313.38	506.13	-487.68	-302.62	40°10'18.039"N	104°45'28.745"W	0.87	
8159.00	90.900	181.800	7311.12	602.04	-583.61	-305.38	40°10'17.091"N	104°45'28.781"W	0.99	
8255.00	90.100	180.700	7310.28	697.95	-679.58	-307.48	40°10'16.142"N	104°45'28.808"W	1.42	
8352.00	89.600	180.900	7310.53	794.83	-776.57	-308.83	40°10'15.184"N	104°45'28.825"W	0.56	
8542.00	89.900	181.100	7311.36	984.62	-966.54	-312.15	40°10'13.307"N	104°45'28.868"W	0.19	
8631.00	89.000	180.500	7312.21	1073.50	-1055.53	-313.39	40°10'12.427"N	104°45'28.884"W	1.22	
8728.00	89.300	181.000	7313.65	1170.36	-1152.51	-314.66	40°10'11.469"N	104°45'28.900"W	0.60	
8918.00	90.000	180.700	7314.81	1360.12	-1342.48	-317.48	40°10'09.592"N	104°45'28.937"W	0.40	
9014.00	88.700	179.300	7315.90	1455.91	-1438.47	-317.48	40°10'08.643"N	104°45'28.937"W	1.99	
9205.00	88.300	180.100	7320.90	1646.38	-1629.40	-316.48	40°10'06.756"N	104°45'28.924"W	0.47	



# Actual Wellpath Report

CANNON 16N-3HZ AWP

Page 4 of 6



## REFERENCE WELLPATH IDENTIFICATION

Operator	KERR-MCGEE OIL & GAS ONSHORE LP	Slot	SLOT#02 CANNON 16N-3HZ (517'FNL & 874'FEL, SEC.03)
Area	COLORADO	Well	CANNON 16N-3HZ
Field	WELD COUNTY (KERR MCGEE)	Wellbore	CANNON 16N-3HZ AWP
Facility	SEC.03-T2N-R66W		

## WELLPATH DATA (113 stations)

MD [ft]	Inclination [°]	Azimuth [°]	TVD [ft]	Vert Sect [ft]	North [ft]	East [ft]	Latitude	Longitude	DLS [°/100ft]	Comments
9299.00	90.100	179.500	7322.22	1740.15	-1723.39	-316.15	40°10'05.827"N	104°45'28.919"W	2.02	
9489.00	91.000	179.500	7320.39	1929.63	-1913.37	-314.49	40°10'03.950"N	104°45'28.898"W	0.47	
9584.00	90.600	179.700	7319.07	2024.38	-2008.36	-313.83	40°10'03.011"N	104°45'28.889"W	0.47	
9679.00	90.600	180.400	7318.07	2119.19	-2103.35	-313.91	40°10'02.073"N	104°45'28.891"W	0.74	
9868.00	90.800	179.800	7315.76	2307.80	-2292.34	-314.24	40°10'00.205"N	104°45'28.895"W	0.33	
9965.00	89.900	179.300	7315.17	2404.55	-2389.33	-313.48	40°09'59.247"N	104°45'28.885"W	1.06	
10059.00	89.100	179.800	7315.99	2498.30	-2483.32	-312.74	40°09'58.318"N	104°45'28.875"W	1.00	
10155.00	89.500	180.100	7317.16	2594.08	-2579.32	-312.66	40°09'57.369"N	104°45'28.874"W	0.52	
10345.00	91.000	179.600	7316.33	2783.65	-2769.31	-312.16	40°09'55.492"N	104°45'28.868"W	0.83	
10439.00	89.400	180.000	7316.00	2877.43	-2863.30	-311.83	40°09'54.563"N	104°45'28.864"W	1.75	
10628.00	91.000	179.700	7315.35	3066.00	-3052.30	-311.34	40°09'52.695"N	104°45'28.857"W	0.86	
10722.00	89.800	179.700	7314.69	3159.77	-3146.29	-310.85	40°09'51.766"N	104°45'28.851"W	1.28	
10817.00	88.900	179.500	7315.77	3254.52	-3241.28	-310.18	40°09'50.828"N	104°45'28.842"W	0.97	
10911.00	89.100	179.100	7317.41	3348.23	-3335.26	-309.04	40°09'49.899"N	104°45'28.828"W	0.48	
11007.00	88.900	178.200	7319.08	3443.84	-3431.22	-306.77	40°09'48.951"N	104°45'28.798"W	0.96	
11102.00	90.700	177.500	7319.41	3538.34	-3526.14	-303.21	40°09'48.013"N	104°45'28.752"W	2.03	
11196.00	90.900	177.800	7318.10	3631.81	-3620.06	-299.36	40°09'47.084"N	104°45'28.703"W	0.38	
11291.00	89.700	178.200	7317.60	3726.34	-3715.00	-296.04	40°09'46.146"N	104°45'28.660"W	1.33	
11480.00	88.600	176.900	7320.41	3914.23	-3903.79	-287.96	40°09'44.281"N	104°45'28.556"W	0.90	
11575.00	89.600	177.700	7321.90	4008.63	-3998.68	-283.49	40°09'43.343"N	104°45'28.498"W	1.35	
11669.00	89.900	178.500	7322.31	4102.18	-4092.62	-280.37	40°09'42.415"N	104°45'28.458"W	0.91	
11795.00	89.500	178.600	7322.97	4227.67	-4218.58	-277.18	40°09'41.170"N	104°45'28.417"W	0.33	LAST BHI MWD+IFR SURVEYS
11855.00	89.500	178.600	7323.49	4287.43	-4278.56	-275.72	40°09'40.577"N	104°45'28.398"W	0.00	PROJECTION TO BIT

## HOLE & CASING SECTIONS - Ref Wellbore: CANNON 16N-3HZ AWP Ref Wellpath: CANNON 16N-3HZ AWP

String/Diameter	Start MD [ft]	End MD [ft]	Interval [ft]	Start TVD [ft]	End TVD [ft]	Start N/S [ft]	Start E/W [ft]	End N/S [ft]	End E/W [ft]
13.5in Open Hole	13.00	816.00	803.00	13.00	815.98	0.00	0.00	2.61	-3.72
9.625in Casing Surface	13.00	816.00	803.00	13.00	815.98	0.00	0.00	2.61	-3.72
8.75in Open Hole	816.00	7717.00	6901.00	815.98	7316.66	2.61	-3.72	-141.84	-293.83
7in Casing Intermediate	13.00	7711.00	7698.00	13.00	7316.53	0.00	0.00	-135.84	-293.65
6.125in Open Hole	7717.00	11855.00	4138.00	7316.66	7323.49	-141.84	-293.83	-4278.56	-275.72



# Actual Wellpath Report

CANNON 16N-3HZ AWP

Page 5 of 6



## REFERENCE WELLPATH IDENTIFICATION

Operator	KERR-MCGEE OIL & GAS ONSHORE LP	Slot	SLOT#02 CANNON 16N-3HZ (517'FNL & 874'FEL, SEC.03)
Area	COLORADO	Well	CANNON 16N-3HZ
Field	WELD COUNTY (KERR MCGEE)	Wellbore	CANNON 16N-3HZ AWB
Facility	SEC.03-T2N-R66W		

## TARGETS

Name	MD [ft]	TVD [ft]	North [ft]	East [ft]	Grid East [US ft]	Grid North [US ft]	Latitude	Longitude	Shape
CANNON 1-3HZ SECTION LINES		0.00	0.30	30.20	3207681.19	1306743.33	40°10'22.861"N	104°45'24.458"W	polygon
CANNON 16N-3HZ BHL ON PLAT REV-1 (460'FSL & 1140'FEL, SEC.03)		7215.00	-4303.46	-270.89	3207416.20	1302437.38	40°09'40.331"N	104°45'28.336"W	point
CANNON 16N-3HZ BHL ON PLAT REV-2 (460'FSL & 1140'FEL, SEC.03)		7305.00	-4303.46	-270.89	3207416.20	1302437.38	40°09'40.331"N	104°45'28.336"W	point
CANNON 16N-3HZ BHL REV-3 (460'FSL & 1170'FEL, SEC.03)		7305.00	-4303.46	-300.89	3207386.19	1302437.13	40°09'40.331"N	104°45'28.722"W	point
CANNON 16N-3HZ LAND BOX		8100.00	0.00	0.00	3207651.00	1306742.77	40°10'22.858"N	104°45'24.847"W	polygon
CANNON 1-3HZ HARDLINES (460' SETBACKS)		8200.00	0.30	30.20	3207681.19	1306743.33	40°10'22.861"N	104°45'24.458"W	polygon

## WELLPATH COMPOSITION - Ref Wellbore: CANNON 16N-3HZ AWB Ref Wellpath: CANNON 16N-3HZ AWP

Start MD [ft]	End MD [ft]	Positional Uncertainty Model	Log Name/Comment	Wellbore
13.00	713.00	Generic gyro - continuous (Standard)	MS GYRO SURVEYS <113-713>	CANNON 16N-3HZ AWB
713.00	7177.00	NaviTrak (MAGCORR,IFR)	BHI MWD+IFR SURVEYS 8 3/4" HOLE <895-7177>	CANNON 16N-3HZ AWB
7177.00	11795.00	NaviTrak (MAGCORR,IFR)	BHI MWD+IFR SURVEYS 6 1/8" HOLE <7224-11795>	CANNON 16N-3HZ AWB
11795.00	11855.00	Blind Drilling (std)	Projection to bit	CANNON 16N-3HZ AWB



# Actual Wellpath Report

CANNON 16N-3HZ AWP

Page 6 of 6



## REFERENCE WELLPATH IDENTIFICATION

Operator	<b>KERR-MCGEE OIL &amp; GAS ONSHORE LP</b>	Slot	<b>SLOT#02 CANNON 16N-3HZ (517'FNL &amp; 874'FEL, SEC.03)</b>
Area	<b>COLORADO</b>	Well	<b>CANNON 16N-3HZ</b>
Field	<b>WELD COUNTY (KERR MCGEE)</b>	Wellbore	<b>CANNON 16N-3HZ AWP</b>
Facility	<b>SEC.03-T2N-R66W</b>		

## WELLPATH COMMENTS

MD [ft]	Inclination [°]	Azimuth [°]	TVD [ft]	Comment
13.00	0.000	268.260	13.00	TIE-ON
113.00	0.480	268.260	113.00	BEGIN GYRO SURVEYS
713.00	0.250	353.720	712.98	TIE ONTO GYRO SURVEYS
895.00	0.500	347.100	894.98	BEGIN BHI MWD+IFR SURVEYS
7711.00	88.718	181.733	7316.53	7" CASING POINT
11795.00	89.500	178.600	7322.97	LAST BHI MWD+IFR SURVEYS
11855.00	89.500	178.600	7323.49	PROJECTION TO BIT