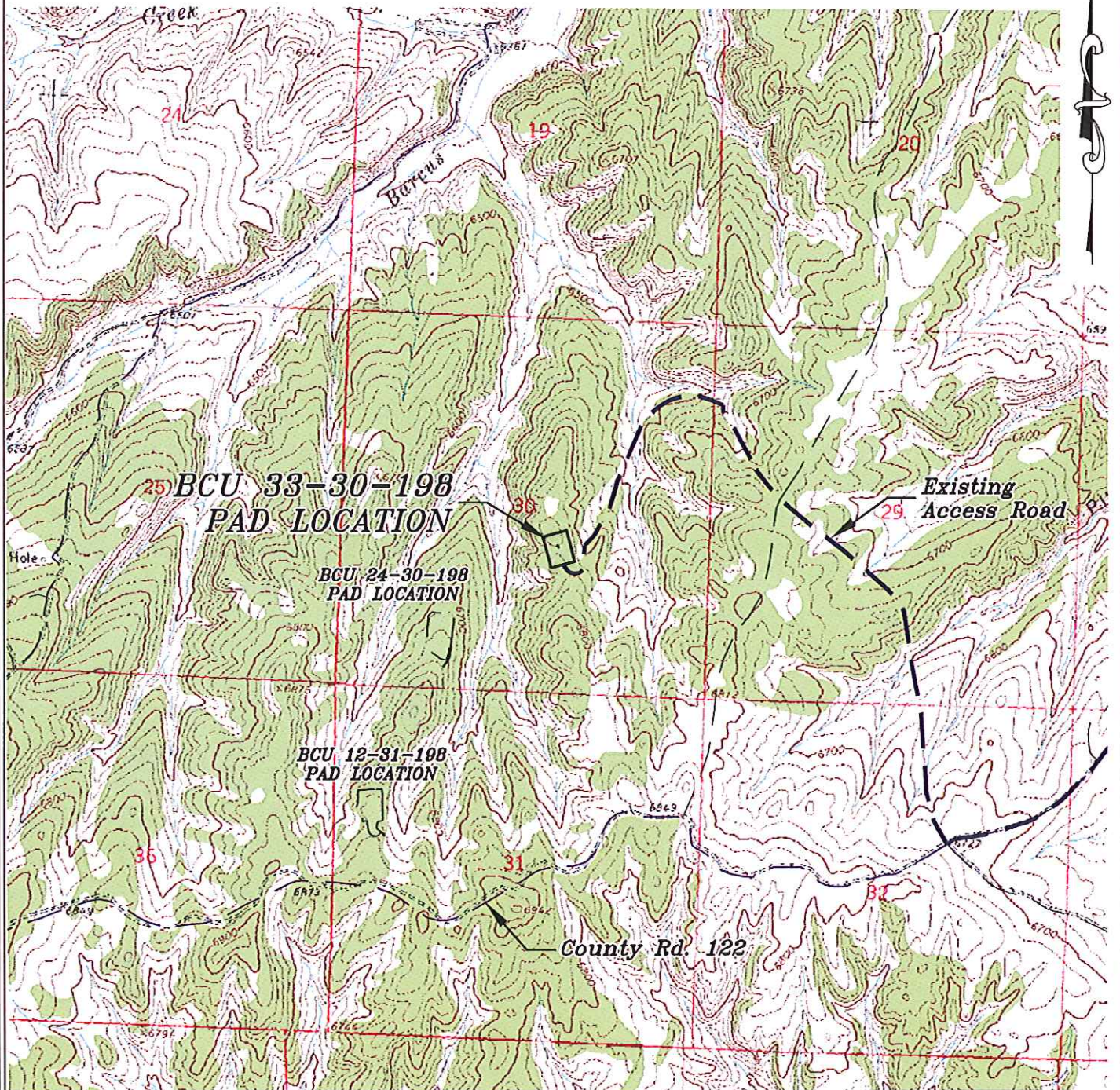


Section 30
T. 1 N., R. 98 W.
6th. P.M.



ACCESS DESCRIPTION:

FROM THE INTERSECTION OF STATE HIGHWAY 64 AND RIO BLANCO COUNTY ROAD 5 PROCEED SOUTHERLY ALONG COUNTY ROAD 5 ± 4.6 MILES TO AN INTERSECTION WITH A DIRT/GRAVEL ROAD BEING COUNTY ROAD 20 (Mile Marker 36.7), PROCEED RIGHT IN A WESTERLY DIRECTION ALONG COUNTY ROAD 20 ± 4.9 MILES TO THE INTERSECTION WITH A DIRT/GRAVEL ROAD BEING COUNTY ROAD 122, PROCEED RIGHT, THEN IMMEDIATELY LEFT IN A WESTERLY DIRECTION ± 5.3 MILES TO AN INTERSECTION WITH A DIRT/GRAVEL ROAD, PROCEED RIGHT IN A NORTHERLY DIRECTION ± 2.2 MILES TO THE BCU 33-30-198 DRILL PAD LOCATION, AS SHOWN HEREON.

REVISED: 7/15/13

136 East Third Street
Rifle, Colorado 81650
Ph. (970) 625-2720
Fax (970) 625-2773



BOOKCLIFF
Survey Services, Inc.

SCALE: 1" = 2000'
DATE: 6/11/13
PLAT: 5 of 7
PROJECT: Highlands
DFT: cws

Construction Plan Prepared for:
WPX ENERGY WPX Energy Rocky Mountain, LLC

BCU 33-30-198 Drill Pad - Plat 5
ACCESS ROAD & TOPO MAP