

**HALLIBURTON**

---

# **WPX ENERGY ROCKY MOUNTAIN LLC-EBUS**

---

**PA 313-31  
Parachute  
Garfield County , Colorado**

**Squeeze Perfs**  
**25-Jul-2013**

**Job Site Documents**

## The Road to Excellence Starts with Safety

Sold To #: 300721	Ship To #: 2661351	Quote #:	Sales Order #: 900615975
Customer: WPX ENERGY ROCKY MOUNTAIN LLC-EBUS		Customer Rep: Skalla, Justin	
Well Name: PA	Well #: 313-31	API/UWI #: 05-045-14837	
Field: Parachute	City (SAP): PARACHUTE	County/Parish: Garfield	State: Colorado
Lat: N 39.476 deg. OR N 39 deg. 28 min. 32.938 secs.		Long: W 108.044 deg. OR W -109 deg. 57 min. 20.272 secs.	
Contractor: WORKOVER		Rig/Platform Name/Num: Workover	
Job Purpose: Squeeze Perfs			
Well Type: Development Well		Job Type: Squeeze Perfs	
Sales Person: MAYO, MARK		Srvc Supervisor: YOUNG, JEREMY	MBU ID Emp #: 418013

## Job Personnel

HES Emp Name	Exp Hrs	Emp #	HES Emp Name	Exp Hrs	Emp #	HES Emp Name	Exp Hrs	Emp #
ATKINSON, STEPHAN Michael	8	513940	BROWN, JUSTIN Michael	8	549296	EICKHOFF, ROBERT Edward	8	495311
LAULAINEN, ROGER Edward	8	524413	YOUNG, JEREMY R	8	418013			

## Equipment

HES Unit #	Distance-1 way	HES Unit #	Distance-1 way	HES Unit #	Distance-1 way	HES Unit #	Distance-1 way
10011429	30 mile	10744549	30 mile	10872429	30 mile	10995027	30 mile
11583932	30 mile	11808847	30 mile				

## Job Hours

Date	On Location Hours	Operating Hours	Date	On Location Hours	Operating Hours	Date	On Location Hours	Operating Hours
07/25/2013	8	5						

TOTAL

Total is the sum of each column separately

## Job

## Job Times

Formation Name	Top	Bottom	Called Out	Date	Time	Time Zone
Formation Depth (MD)			On Location	25 - Jul - 2013	00:00	MST
Form Type	BHST		Job Started	25 - Jul - 2013	04:00	MST
Job depth MD	4082. ft	Job Depth TVD	Job Completed	25 - Jul - 2013	07:37	MST
Water Depth		Wk Ht Above Floor	Departed Loc	25 - Jul - 2013	10:48	MST
Perforation Depth (MD)	From 6,800.00 ft	To 6,810.00 ft		25 - Jul - 2013	12:00	MST

## Well Data

Description	New / Used	Max pressure psig	Size in	ID in	Weight lbm/ft	Thread	Grade	Top MD ft	Bottom MD ft	Top TVD ft	Bottom TVD ft
Perforation Interval								6800.	6810.		

## Tools and Accessories

Type	Size	Qty	Make	Depth	Type	Size	Qty	Make	Depth	Type	Size	Qty	Make
Guide Shoe					Packer					Top Plug			
Float Shoe					Bridge Plug					Bottom Plug			
Float Collar					Retainer					SSR plug set			
Insert Float										Plug Container			
Stage Tool										Centralizers			

## Miscellaneous Materials

Gelling Agt	Conc	Surfactant	Conc	Acid Type	Qty	Conc	%
Treatment Fld	Conc	Inhibitor	Conc	Sand Type	Size	Qty	

## Fluid Data

Stage/Plug #: 1										
Fluid #	Stage Type	Fluid Name	Qty	Qty uom	Mixing Density lbm/gal	Yield ft <sup>3</sup> /sk	Mix Fluid Gal/sk	Rate bbl/min	Total Mix Fluid Gal/sk	

Stage/Plug #: 1

Stage/Plug #: 1									
Fluid #	Stage Type	Fluid Name	Qty	Qty uom	Mixing Density lbm/gal	Yield ft <sup>3</sup> /sk	Mix Fluid Gal/sk	Rate bbl/min	Total Mix Fluid Gal/sk
1	MUD FLUSH III	MUD FLUSH III - SBM (528788)	40.00	bbl	8.4	.0	.0	3.5	
2	Fresh Water	FRESH WATER	5.00	bbl	8.33	.0	.0	3.5	
3	Squeeze Lead Cement	SQUEEZECEM (TM) SYSTEM (452971)	345.0	sacks	13.5	1.62	8.0	3.5	8.0
8 Gal		FRESH WATER							
4	SqueezeCem Tail Cement	SQUEEZECEM (TM) SYSTEM (452971)	50.0	sacks	15.8	1.15	4.98	3	4.98
4.98 Gal		FRESH WATER							
5	Displacement Fluid	FRESH WATER	15.20	bbl	8.34	.0	.0	1	
Calculated Values		Pressures		Volumes					
Displacement	15.2	Shut In: Instant		Lost Returns	NO	Cement Slurry	109.7	Pad	
Top Of Cement	1668	5 Min		Cement Returns	0.5	Actual Displacement	15.6	Treatment	
Frac Gradient		15 Min		Spacers		Load and Breakdown		Total Job	170
Rates									
Circulating		Mixing	3.5	Displacement	1	Avg. Job	3		
Cement Left In Pipe	Amount	0 ft	Reason	Shoe Joint					
Frac Ring # 1 @	ID	Frac ring # 2 @	ID	Frac Ring # 3 @	ID	Frac Ring # 4 @	ID		
The Information Stated Herein Is Correct				Customer Representative Signature					

*The Road to Excellence Starts with Safety*

Sold To #: 300721		Ship To #: 2661351		Quote #:		Sales Order #: 900615975	
Customer: WPX ENERGY ROCKY MOUNTAIN LLC-EBUS				Customer Rep: Skalla, Justin			
Well Name: PA			Well #: 313-31		API/UWI #: 05-045-14837		
Field: Parachute		City (SAP): PARACHUTE		County/Parish: Garfield		State: Colorado	
Legal Description:							
Lat: N 39.476 deg. OR N 39 deg. 28 min. 32.938 secs.				Long: W 108.044 deg. OR W -109 deg. 57 min. 20.272 secs.			
Contractor: WORKOVER			Rig/Platform Name/Num: Workover				
Job Purpose: Squeeze Perfs					Ticket Amount:		
Well Type: Development Well			Job Type: Squeeze Perfs				
Sales Person: MAYO, MARK			Srcv Supervisor: YOUNG, JEREMY			MBU ID Emp #: 418013	

Activity Description	Date/Time	Cht #	Rate bbl/ min	Volume bbl		Pressure psig		Comments
				Stage	Total	Tubing	Casing	
Call Out	07/25/2013 00:00							
Pre-Convoy Safety Meeting	07/25/2013 02:50							WITH ALL HES PERSONNEL
Crew Leave Yard	07/25/2013 03:00							
Arrive At Loc	07/25/2013 04:00							
Assessment Of Location Safety Meeting	07/25/2013 06:00							WITH ALL HES PERSONNEL
Other	07/25/2013 06:10							SPOT EQUIPMENT
Pre-Rig Up Safety Meeting	07/25/2013 06:20							WITH ALL HES PERSONNEL
Rig-Up Equipment	07/25/2013 06:30							
Pre-Job Safety Meeting	07/25/2013 07:15							WITH ALL PERSONNEL ON LOCATION
Comment	07/25/2013 07:37							RIG HELD 500 PSI ON BACKSIDE THROUGHOUT JOB UNTIL BRADEN HEAD WAS SHUT
Start Job	07/25/2013 07:37							BRIDGE PLUG SET AT 4150 FT, RETAINER SET AT 3920 FT, PERFS AT 4082 FT, TUBING 2 3/8 IN 4/7 LB/FT, CSG 4 1/2 IN 11.6 LB/FT, OPEN HOLE 7 7/8 IN, SURFACE CSG SET AT 2170 FT 9 5/8 IN 32.3 LB/FT
Other	07/25/2013 07:38		2	2		380.0	500.0	FILL LINES WITH FRESH WATER

Activity Description	Date/Time	Cht #	Rate bbl/min	Volume bbl		Pressure psig		Comments
				Stage	Total	Tubing	Casing	
Test Lines	07/25/2013 07:42							TEST LINES TO 5300 PSI. PRESSURE HELD
Pump Spacer 1	07/25/2013 07:48		3.5	40		1150.0	500.0	MUFDLUSH III. 1 BPM @ 200 PSI, 2 BPM @ 440 PSI, 3.5 BPM @ 1130 PSI
Pump Spacer 2	07/25/2013 08:01		3.5	5		1160.0	500.0	FRESH WATER
Pump Lead Cement	07/25/2013 08:03		3.5	99.5		1500.0	500.0	345 SKS AT 13.5 PPG, 1.62 FT3/SK, 8 GAL/SK. TOP OF LEAD CALCULATED AT 1668 FT
Pump Tail Cement	07/25/2013 08:35		3	10.2		1350.0	500.0	50 SKS AT 15.8 PPG, 1.15 FT3/SK, 4.98 GAL/SK. TOP OF TAIL CALCULATED AT 3892 FT
Pump Displacement	07/25/2013 08:38		1	14.2		671.0	500.0	FRESH WATER
Shutdown	07/25/2013 08:53							SHUTDOWN WITH 1 BBL CEMENT REMAINING IN TUBING AS PER COMPANY REP
Comment	07/25/2013 08:54							RIG SHUT IN BRADEN HEAD AND RELEASED BACKSIDE PRESSURE
Resume Squeeze	07/25/2013 09:05		0.7	0.25		650.0		PRESSURE FELL TO 520 PSI BEFORE RESUMING SQUEEZE
Shutdown	07/25/2013 09:05							PRESSURE FELL TO 491 BEFORE RESUMING SQUEEZE
Resume Squeeze	07/25/2013 09:22		0.7	0.25		673.0		
Shutdown	07/25/2013 09:22							PRESSURE FELL TO 495 BEFORE RESUMING SQUEEZE
Resume Squeeze	07/25/2013 09:34		0.7	0.25		720.0		
Shutdown	07/25/2013 09:34							PRESSURE FELL TO 558 PSI BEFORE RESUMING SQUEEZE
Resume Squeeze	07/25/2013 09:53		0.7	0.25		800.0		
Shutdown	07/25/2013 09:53							PRESSURE FELL TO 536 PSI BEFORE RESUMING SQUEEZE

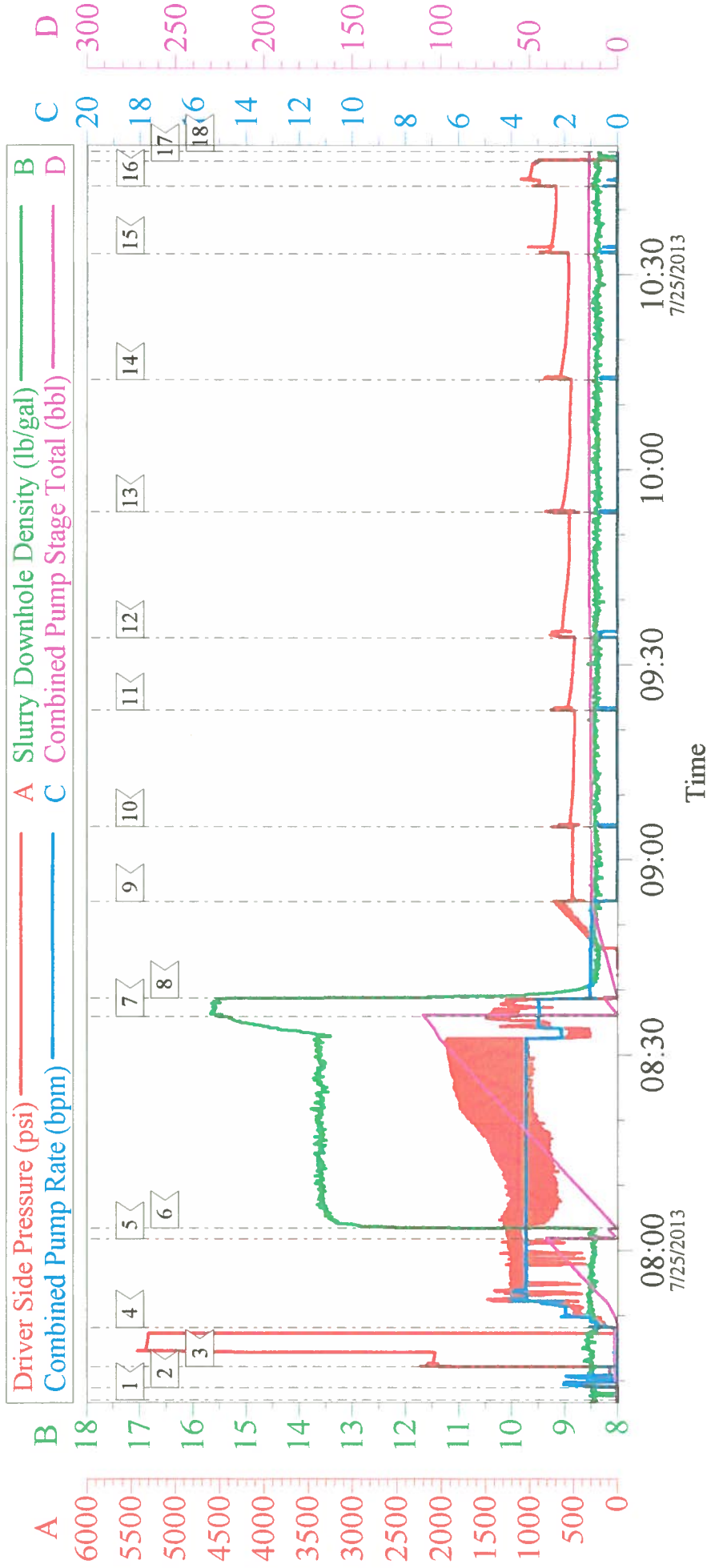


## Cementing Job Log

Activity Description	Date/Time	Cht #	Rate bbl/ min	Volume bbl		Pressure psig		Comments
				Stage	Total	Tubing	Casing	
Resume Squeeze	07/25/2013 10:13		0.7	0.1		810.0		
Shutdown	07/25/2013 10:13							PRESSURE FELL TO 574 PSI BEFORE RESUMING SQUEEZE
Resume Squeeze	07/25/2013 10:33		0.7	0.1		830.0		
Shutdown	07/25/2013 10:33							PRESSURE FELL TO 626 PSI BEFORE RESUMING SQUEEZE
Resume Squeeze	07/25/2013 10:43		0.7	0.1		1010. 0		
Shutdown	07/25/2013 10:43				15.6			PRESSURE HELD. PUMPED A TOTAL OF 15.6 BBL DISPLACEMENT
Open Bypass / Sting Out	07/25/2013 10:47							
Reverse Circ Well	07/25/2013 10:47							RIG REVEARSE CIRCULATE WELL. CIRCULATED APPROX 0.5 BBL CEMENT TO SURFACE
End Job	07/25/2013 10:48							
Pre-Rig Down Safety Meeting	07/25/2013 10:55							WITH ALL HES PERSONNEL
Rig-Down Equipment	07/25/2013 11:05							
Pre-Convoy Safety Meeting	07/25/2013 11:50							WITH ALL HES PERSONNEL
Crew Leave Location	07/25/2013 12:00							
Comment	07/25/2013 12:01							THANK YOU FOR USING HALLIBURTON CEMENT DEPARTMENT. JEREMY YOUNG AND CREW

# WPX - PA 313-31

## RE-CEMENT / SQUEEZE



### Local Event Log

1	START JOB	07:37:02	2	FILL LINES	07:38:58	3	TEST LINES	07:42:09
4	PUMP MUDDFLUSH SPACER	07:48:13	5	PUMP H2O SPACER	08:01:46	6	PUMP LEAD CEMENT	08:03:25
7	PUMP TAIL CEMENT	08:35:57	8	PUMP DISPLACEMENT	08:38:44	9	SHUTDOWN	08:53:36
10	HESITATE SQUEEZE	09:05:07	11	HESITATE SQUEEZE	09:22:57	12	HESITATE SQUEEZE	09:34:05
13	HESITATE SQUEEZE	09:53:25	14	HESITATE SQUEEZE	10:13:46	15	HESITATE SQUEEZE	10:33:10
16	HESITATE SQUEEZE	10:43:34	17	STING OUT/REVEARSE OUT	10:47:28	18	END JOB	10:48:57

Customer: WPX	Job Date: 25-Jul-2013	Sales Order #: 900615975
Well Description: PA 313-31	Job Type: RECEMENT/SQUEEZE	ADC Used: YES
Customer Rep: JUSTIN SKALLA	Cement Supervisor: JEREMY YOUNG	Elite #7: ROB EICKHOFF

OptiCem v6.4.10  
25-Jul-13 12:00

## Field Ticket

<b>Field Ticket Number:</b> 900615975		<b>Field Ticket Date:</b> Thursday, July 25, 2013	
<b>Bill To:</b> WPX ENERGY ROCKY MOUNTAIN LLC-PICEA DO NOT MAIL - PO BOX 21218 TULSA, OK 74121-1218		<b>Job Name:</b> Squeeze <b>Order Type:</b> Streamline Order (ZOH) <b>Well Name:</b> PA 313-31 <b>Company Code:</b> 1100 <b>Customer PO No.:</b> NA <b>Shipping Point:</b> Grand Junction, CO, USA <b>Sales Office:</b> Rocky Mountains BD <b>Well Type:</b> Gas <b>Well Category:</b> Development	
<b>Ship To:</b> WPX ENERGY ROCKY MOUNTAIN LLC-EBUS PA, 313-31 2661351 S31-T6S-R95W PARACHUTE, CO 81635			

Material	Description	QTY	UOM	Base Amt	Unit Amt	Gross Amount	Discount	Net Amount
7526	CMT SQUEEZE PERFORATIONS BOM	1	JOB	0.00	0.00	0.00	55%	0.00
	Cementing Services							
2	MILEAGE FOR CEMENTING CREW,ZI	60	MI	0.00	5.76	345.60	55%	155.52
	Number of Units	1						
1	ZI-MILEAGE FROM NEAREST HES BASE,/UNIT	60	MI	0.00	9.79	587.40	55%	264.33
	Number of Units	1						
16097	SQUEEZE PUMPING CHARGE,ZI	1	EA	0.00	8,028.00	8,028.00	55%	3,612.60
	DEPTH	4082						
	FEET/METERS (FT/M)		FT					
130104	PORT. DATA ACQUIS. W/OPTICEM RT W/HES	1	EA	0.00	2,549.00	2,549.00	55%	1,147.05
	DAYS OR PARTIAL DAY(WHOLE NO.)	1						
114	R/A DENSOMETER W/CHART RECORDER,/JOB,Z	1	JOB	0.00	1,285.00	1,285.00	55%	578.25
	NUMBER OF UNITS	1						
139	ADC (AUTO DENSITY CTRL) SYS, /JOB,ZI	1	JOB	0.00	2,275.00	2,275.00	55%	1,023.75
	NUMBER OF UNITS	1						
14743	TUBING/ROTARY SUB RNTL,2.38",1ST DAY, ZI	1	EA	0.00	98.10	98.10	55%	44.14
	DAYS OR FRACTION (MIN1)	1						
76400	ZI MILEAGE,CMT MTLs DEL/RET MIN	60	MI	0.00	3.35	3,839.10	55%	1,727.59
	NUMBER OF TONS	19.1						
3965	HANDLE&DUMP SVC CHRg, CMT&ADDITIVES,ZI	447	CF	0.00	5.49	2,454.03	55%	1,104.31
	NUMBER OF EACH	1						
	Unit of Measurement		EA					



## Field Ticket

<b>Field Ticket Number:</b> 900615975		<b>Field Ticket Date:</b> Thursday, July 25, 2013	
<b>Bill To:</b> WPX ENERGY ROCKY MOUNTAIN LLC-PICEA DO NOT MAIL - PO BOX 21218 TULSA, OK 74121-1218		<b>Job Name:</b> Squeeze <b>Order Type:</b> Streamline Order (ZOH) <b>Well Name:</b> PA 313-31 <b>Company Code:</b> 1100 <b>Customer PO No.:</b> NA <b>Shipping Point:</b> Grand Junction, CO, USA <b>Sales Office:</b> Rocky Mountains BD <b>Well Type:</b> Gas <b>Well Category:</b> Development	
<b>Ship To:</b> WPX ENERGY ROCKY MOUNTAIN LLC-EBUS PA, 313-31 2661351 S31-T6S-R95W PARACHUTE, CO 81635			

Material	Description	QTY	UOM	Base Amt	Unit Amt	Gross Amount	Discount	Net Amount
	<b>Materials SubTotal</b>					<b>21,461.23</b>	<b>55.00</b>	<b>9,657.54</b>
7	ENVIRONMENTAL CHARGE,/JOB,ZI	1	JOB	0.00	134.00	134.00		134.00
8	IRON SAFETY INSPECTION SURCHARGE /JOB Z	1	JOB	0.00	83.00	83.00		83.00
86955	ZI FUEL SURCHG-HEAVY TRKS >1 1/2 TON	60	MI	0.00	0.72	43.20		43.20
	Number of Units	1						
86954	ZI FUEL SURCHG-CARS/PICKUPS<1 1/2TON	60	MI	0.00	0.24	14.40		14.40
	Number of Units	1						
87605	ZI FUEL SURCHG-CMT & CMT ADDITIVES	60	MI	0.00	0.24	275.04		275.04
	NUMBER OF TONS	19.1						
372867	Cmt PSL - DOT Vehicle Charge, CMT	4	EA	0.00	241.00	964.00		964.00
	<b>SubTotal</b>					<b>1,513.64</b>	<b>0.00</b>	<b>1,513.64</b>
	<b>Cementing Materials</b>							
528788	MUD FLUSH III	40	BBL	0.00	94.45	3,778.00	55%	1,700.10
452971	SQUEEZECM (TM) SYSTEM	345	SK			30,455.13	55.0%	13,704.81
452971	SQUEEZECM (TM) SYSTEM	50	SK			4,031.68	55.0%	1,814.26
101507884	SUGAR - GRANULATED	20	LB	0.00	6.44	128.80	55%	57.96
	<b>SubTotal</b>					<b>38,393.61</b>	<b>55.00</b>	<b>17,277.13</b>
<b>Totals</b>						<b>61,368.48</b>	<b>32,920.17</b>	<b>28,448.31</b>

Halliburton Rep: JEREMY YOUNG  
 Customer Agent: Justin Skalla  
 Halliburton Approval

## Field Ticket

<b>Field Ticket Number:</b> 900615975		<b>Field Ticket Date:</b> Thursday, July 25, 2013	
<b>Bill To:</b> WPX ENERGY ROCKY MOUNTAIN LLC-PICEA DO NOT MAIL - PO BOX 21218 TULSA, OK 74121-1218		<b>Job Name:</b> Squeeze <b>Order Type:</b> Streamline Order (ZOH) <b>Well Name:</b> PA 313-31 <b>Company Code:</b> 1100 <b>Customer PO No.:</b> NA <b>Shipping Point:</b> Grand Junction, CO, USA <b>Sales Office:</b> Rocky Mountains BD <b>Well Type:</b> Gas <b>Well Category:</b> Development	
<b>Ship To:</b> WPX ENERGY ROCKY MOUNTAIN LLC-EBUS PA, 313-31 2661351 S31-T6S-R95W PARACHUTE, CO 81635			

Material	Description	QTY	UOM	Base Amt	Unit Amt	Gross Amount	Discount	Net Amount
----------	-------------	-----	-----	----------	----------	--------------	----------	------------

THIS OUTPUT DOES NOT INCLUDE TAXES. APPLICABLE SALES TAX WILL BE BILLED ON THE FINAL INVOICE.  
CUSTOMER HEREBY ACKNOWLEDGES RECEIPT OF THE MATERIALS AND SERVICES DESCRIBED ABOVE AND ON THE ATTACHED DOCUMENTS.

X

FIELD TICKET TOTAL: USD

28,448.31

Customer Signature

Was our HSE performance satisfactory? Y or N  
(Health, Safety, Environment)

Were you satisfied with our Equipment? Y or N

Were you satisfied with our people? Y or N

Comments

## Customer Information Only

Ordered-By Name