

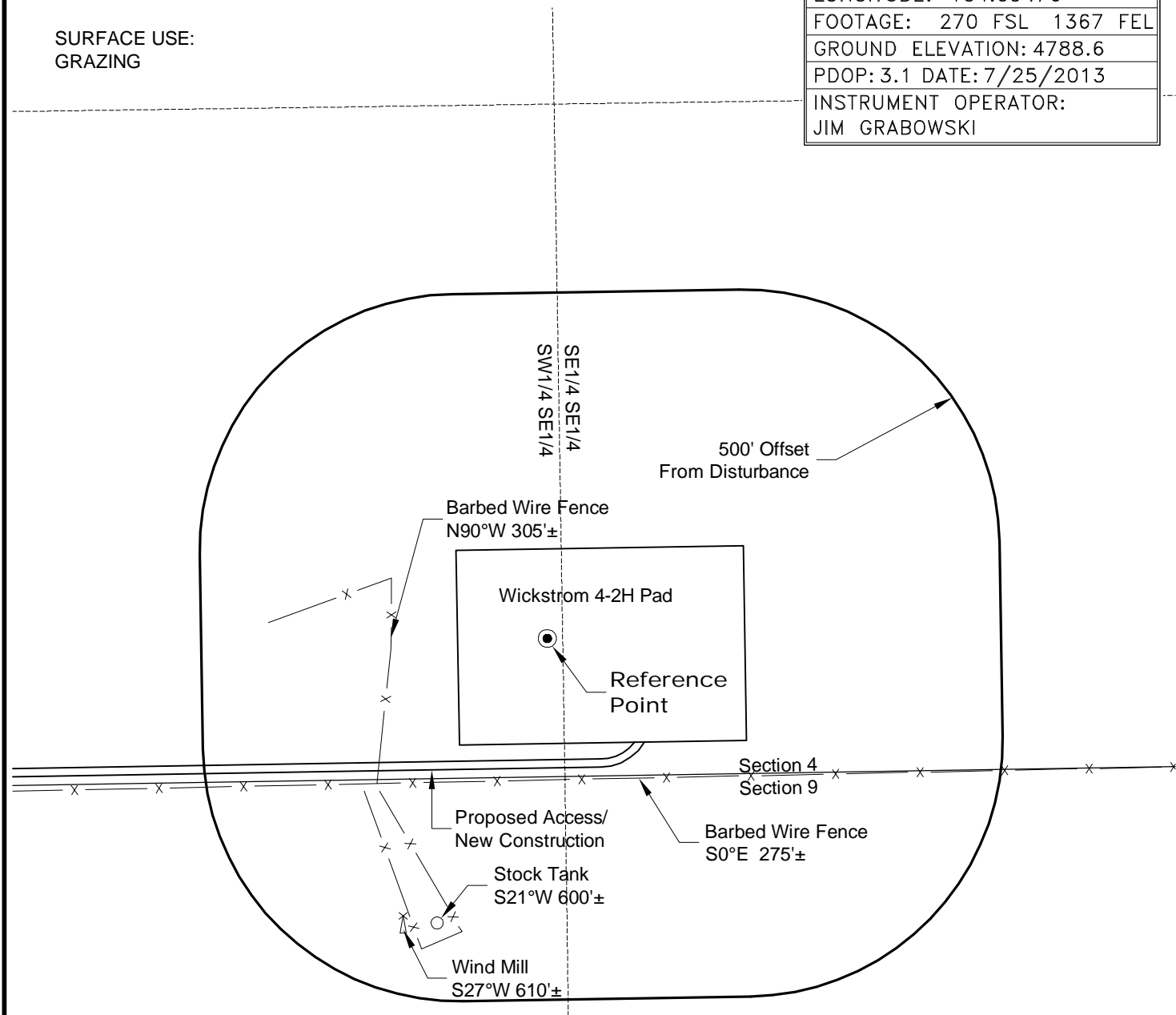
LOCATION DRAWING

VEGETATION:
PASTURE

SURFACE USE:
GRAZING

REFERENCE POINT

LATITUDE: 40.51071
LONGITUDE: -104.09476
FOOTAGE: 270 FSL 1367 FEL
GROUND ELEVATION: 4788.6
PDOP: 3.1 DATE: 7/25/2013
INSTRUMENT OPERATOR: JIM GRABOWSKI

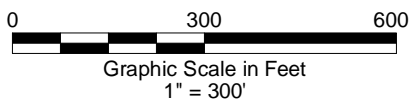


NOTE-DISTANCE TO NEAREST:
 Property Line - S 2,910'±
 Public Road - MCR 2 - W 3,940'±
 Building - House N30°W 4,370'±
 Railroad - S10°E 18.5 Miles±
 Powerline - W 3,930'±

DISTURBANCE ACREAGE:
 6.7± DRILLING OPERATIONS

NOTE:
 ALL PRODUCTION FACILITIES WILL BE ON PAD.

8/13/13



LAND SURVEYING AND MAPPING
LAFAYETTE - WINTER PARK
 Ph 303 666 0379 Fx 303 665 6320

CONDOR ENERGY TECHNOLOGY LLC
WICKSTROM 4-2H PAD

SW1/4 SE1/4 SECTION 4 T6N R60W
6th PM MORGAN COUNTY COLORADO