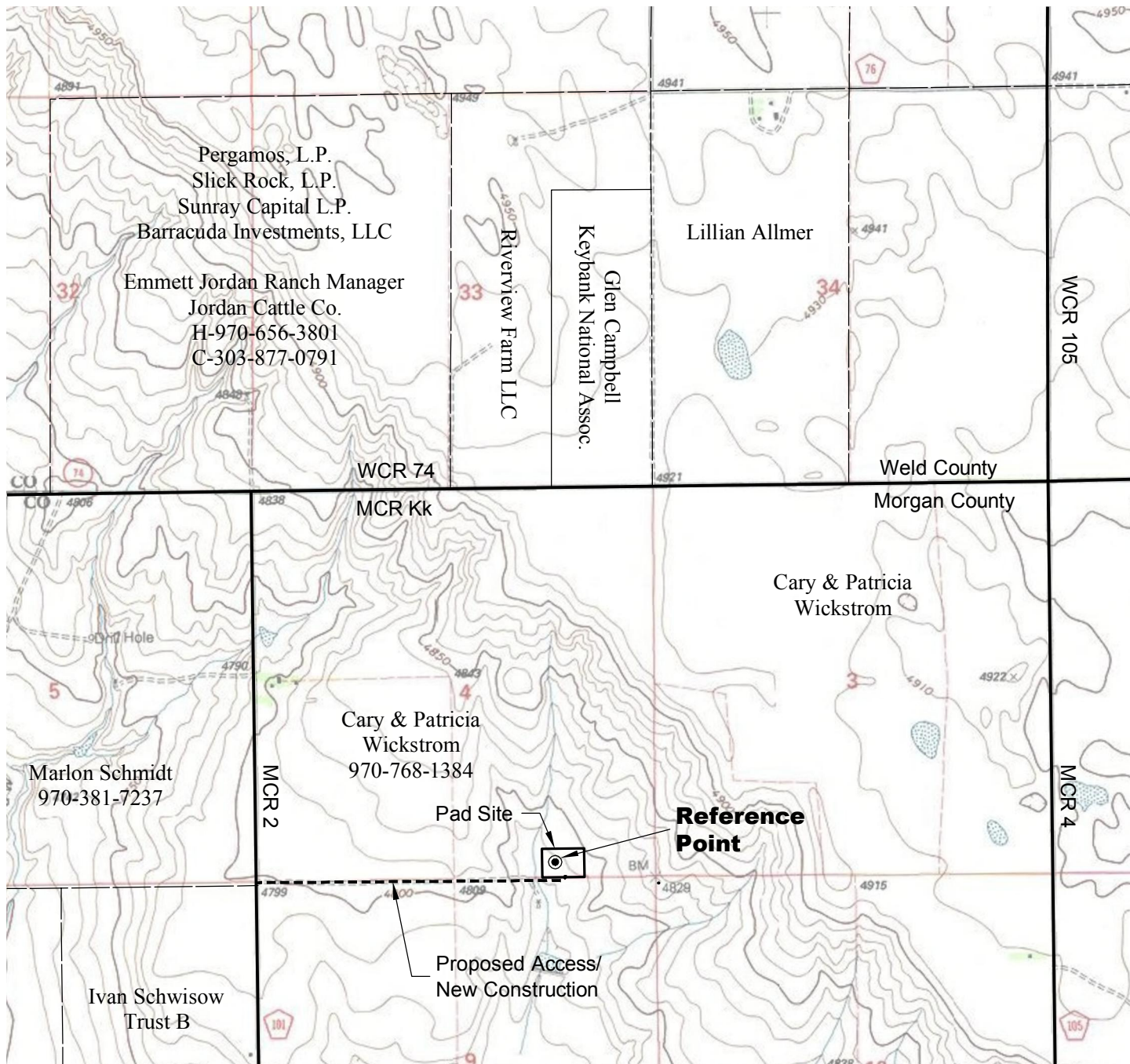


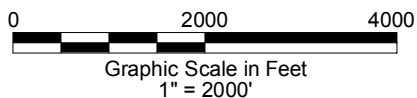
ACCESS ROAD MAP



DRIVING DIRECTIONS:

From Town of Orchard, beginning at intersection of Washington Ave & CR X; East on CR X
 MP 0.2 Left on CR 2
 MP 12.3 Right on access to Wickstrom 4-2H pad
 MP 13.1 Wickstrom 4-2H Pad

7/29/13



LAND SURVEYING AND MAPPING
 LAFAYETTE - WINTER PARK
 Ph 303 666 0379 Fx 303 665 6320

CONDOR ENERGY TECHNOLOGY LLC
WICKSTROM 4-2H PAD

SW1/4 SE1/4 SECTION 4 T6N R60W
6th PM MORGAN COUNTY COLORADO