

# KERR-MCGEE OIL & GAS ONSHORE LP

Location: COLORADO Slot: SLOT#01 CANNON 15N-3HZ (516'FNL & 904'FEL, SEC. 03)  
 Field: WELD COUNTY (KERR MCGEE) Well: CANNON 15N-3HZ  
 Facility: SEC.03-T2N-R66W Wellbore: CANNON 15N-3HZ PWB

Plot reference wellpath is CANNON 15N-3HZ (REV-B.0) PWP

True vertical depths are referenced to ENSIGN 138 (RKB)

Measured depths are referenced to ENSIGN 138 (RKB)

ENSGIN 138 (RKB) to Mean Sea Level: 5035 feet

Mean Sea Level to Mud line (At Slot: SLOT#01 CANNON 15N-3HZ (516'FNL & 904'FEL, SEC. 03)): 0 feet

Coordinates are in feet referenced to Slot

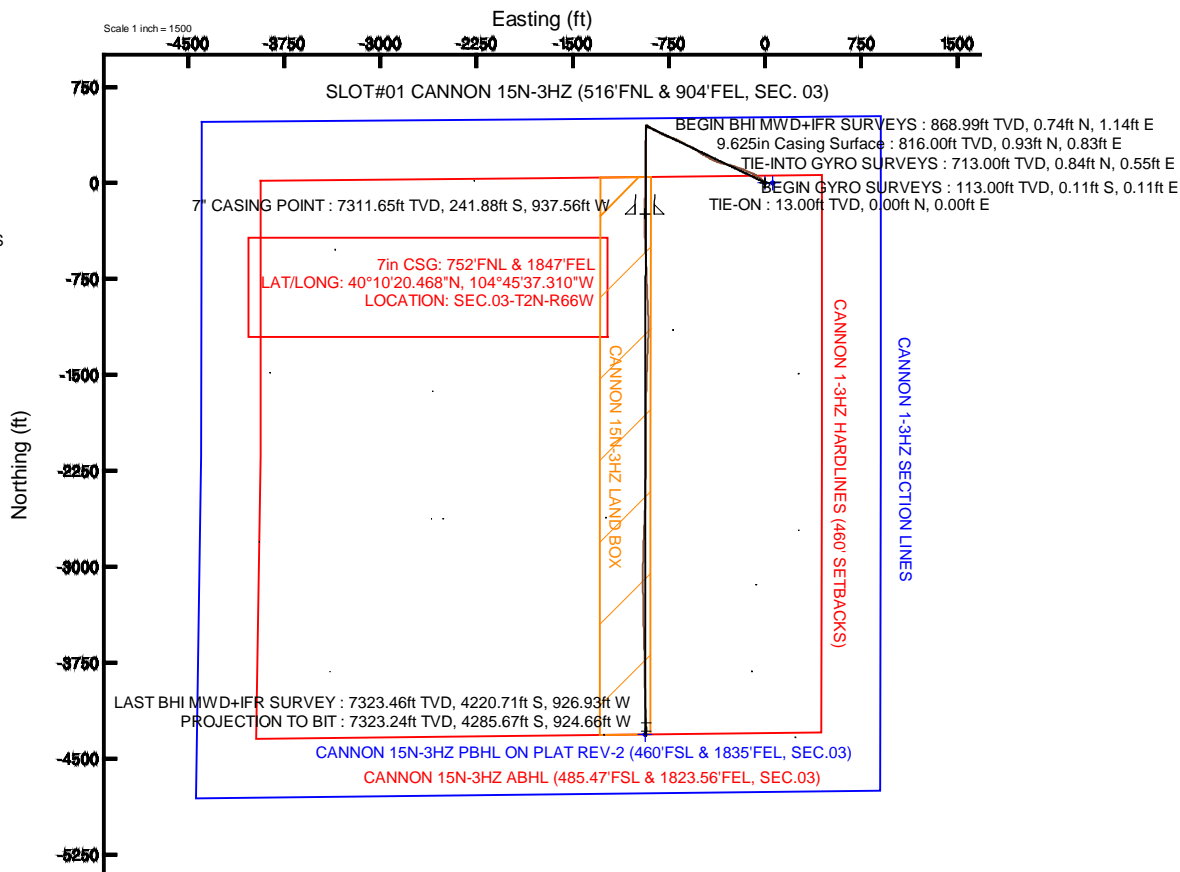
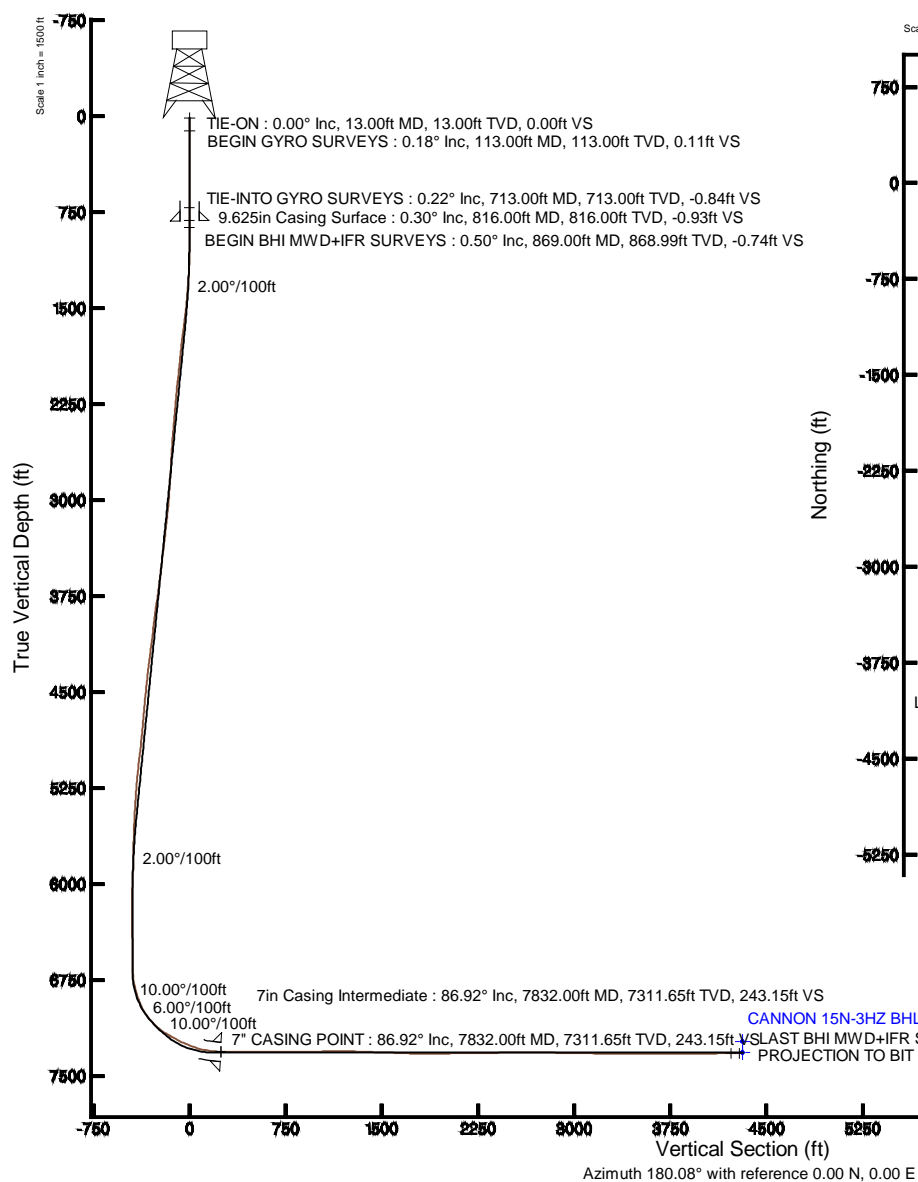
Grid System: NAD83 / Lambert Colorado SP, Northern Zone (501), US feet

North Reference: True north

Scale: True distance

Depths are in feet

Created by: robale01 on 19/Jul/2013





# Actual Wellpath Report

CANNON 15N-3HZ AWP

Page 1 of 6



## REFERENCE WELLPATH IDENTIFICATION

Operator	KERR-MCGEE OIL & GAS ONSHORE LP	Slot	SLOT#01 CANNON 15N-3HZ (516'FNL & 904'FEL, SEC. 03)
Area	COLORADO	Well	CANNON 15N-3HZ
Field	WELD COUNTY (KERR MCGEE)	Wellbore	CANNON 15N-3HZ AWB
Facility	SEC.03-T2N-R66W		

## REPORT SETUP INFORMATION

Projection System	NAD83 / Lambert Colorado SP, Northern Zone (501), US feet	Software System	WellArchitect® 4.0.0
North Reference	True	User	Robiale01
Scale	0.999958	Report Generated	19/Jul/2013 at 11:35
Convergence at slot	n/a	Database/Source file	WA_ANADARKO/CANNON_15N-3HZ_AWB.xml

## WELLPATH LOCATION

	Local coordinates		Grid coordinates		Geographic coordinates	
	North[ft]	East[ft]	Easting[US ft]	Northing[US ft]	Latitude	Longitude
Slot Location	0.10	-0.08	3207621.12	1306742.52	40°10'22.858"N	104°45'25.232"W
Facility Reference Pt			3207621.19	1306742.42	40°10'22.857"N	104°45'25.231"W
Field Reference Pt			3197771.84	1268891.29	40°04'09.600"N	104°47'36.000"W

## WELLPATH DATUM

Calculation method	Minimum curvature	ENSIGN 138 (RKB) to Facility Vertical Datum	5035.00ft
Horizontal Reference Pt	Slot	ENSIGN 138 (RKB) to Mean Sea Level	5035.00ft
Vertical Reference Pt	ENSIGN 138 (RKB)	ENSIGN 138 (RKB) to Mud Line at Slot (SLOT#01 CANNON 15N-3HZ (516'FNL & 904'FEL, SEC. 03))	5035.00ft
MD Reference Pt	ENSIGN 138 (RKB)	Section Origin	N 0.00, E 0.00 ft
Field Vertical Reference	Mean Sea Level	Section Azimuth	192.18°



# Actual Wellpath Report

CANNON 15N-3HZ AWP

Page 2 of 6



## REFERENCE WELLPATH IDENTIFICATION

Operator	KERR-MCGEE OIL & GAS ONSHORE LP	Slot	SLOT#01 CANNON 15N-3HZ (516'FNL & 904'FEL, SEC. 03)
Area	COLORADO	Well	CANNON 15N-3HZ
Field	WELD COUNTY (KERR MCGEE)	Wellbore	CANNON 15N-3HZ AWB
Facility	SEC.03-T2N-R66W		

## WELLPATH DATA (137 stations) † = interpolated/extrapolated station

MD [ft]	Inclination [°]	Azimuth [°]	TVD [ft]	Vert Sect [ft]	North [ft]	East [ft]	Latitude	Longitude	DLS [°/100ft]	Comments
0.00†	0.000	136.090	0.00	0.00	0.00	0.00	40°10'22.858"N	104°45'25.232"W	0.00	
13.00	0.000	136.090	13.00	0.00	0.00	0.00	40°10'22.858"N	104°45'25.232"W	0.00	TIE-ON
113.00	0.180	136.090	113.00	0.09	-0.11	0.11	40°10'22.857"N	104°45'25.231"W	0.18	BEGIN GYRO SURVEYS
213.00	0.380	46.070	213.00	-0.10	0.00	0.46	40°10'22.858"N	104°45'25.226"W	0.42	
313.00	0.190	308.680	313.00	-0.45	0.34	0.57	40°10'22.861"N	104°45'25.225"W	0.45	
413.00	0.250	55.150	413.00	-0.68	0.57	0.62	40°10'22.864"N	104°45'25.224"W	0.35	
513.00	0.260	273.450	513.00	-0.81	0.70	0.57	40°10'22.865"N	104°45'25.225"W	0.48	
613.00	0.110	110.950	613.00	-0.76	0.68	0.43	40°10'22.865"N	104°45'25.226"W	0.37	
713.00	0.220	8.170	713.00	-0.94	0.84	0.55	40°10'22.866"N	104°45'25.225"W	0.27	TIE-INTO GYRO SURVEYS
869.00	0.500	126.000	868.99	-0.96	0.74	1.14	40°10'22.865"N	104°45'25.217"W	0.41	BEGIN BHI MWD+IFR SURVEYS
961.00	0.500	145.100	960.99	-0.52	0.17	1.70	40°10'22.860"N	104°45'25.210"W	0.18	
1053.00	0.800	287.200	1052.99	-0.31	0.03	1.31	40°10'22.858"N	104°45'25.215"W	1.34	
1143.00	2.500	314.000	1142.95	-1.40	1.58	-0.70	40°10'22.874"N	104°45'25.241"W	2.02	
1234.00	4.600	315.500	1233.77	-4.45	5.56	-4.69	40°10'22.913"N	104°45'25.292"W	2.31	
1323.00	6.500	318.100	1322.35	-9.37	11.86	-10.55	40°10'22.975"N	104°45'25.368"W	2.15	
1414.00	7.600	312.400	1412.66	-15.42	19.75	-18.44	40°10'23.053"N	104°45'25.469"W	1.43	
1567.00	10.500	308.600	1563.74	-26.72	35.27	-36.81	40°10'23.207"N	104°45'25.706"W	1.93	
1658.00	12.200	308.600	1652.96	-34.69	46.45	-50.80	40°10'23.317"N	104°45'25.886"W	1.87	
1751.00	13.000	302.500	1743.72	-42.69	58.20	-67.31	40°10'23.433"N	104°45'26.099"W	1.67	
1843.00	13.400	295.700	1833.30	-48.78	68.38	-85.64	40°10'23.534"N	104°45'26.335"W	1.74	
1933.00	14.300	293.000	1920.68	-53.31	77.25	-105.27	40°10'23.621"N	104°45'26.588"W	1.23	
2024.00	15.200	293.700	2008.68	-57.80	86.43	-126.54	40°10'23.712"N	104°45'26.862"W	1.01	
2113.00	15.000	294.000	2094.61	-62.49	95.81	-147.74	40°10'23.805"N	104°45'27.135"W	0.24	
2204.00	14.600	288.500	2182.59	-66.17	104.24	-169.38	40°10'23.888"N	104°45'27.414"W	1.60	
2296.00	14.200	290.600	2271.70	-69.10	111.89	-190.94	40°10'23.964"N	104°45'27.692"W	0.71	
2387.00	14.300	289.100	2359.90	-72.09	119.49	-212.01	40°10'24.039"N	104°45'27.963"W	0.42	
2478.00	14.700	289.900	2448.00	-75.00	127.10	-233.48	40°10'24.114"N	104°45'28.240"W	0.49	
2569.00	14.100	287.400	2536.14	-77.56	134.34	-254.92	40°10'24.186"N	104°45'28.516"W	0.95	
2660.00	14.400	283.100	2624.35	-78.75	140.22	-276.51	40°10'24.244"N	104°45'28.794"W	1.21	
2751.00	14.700	281.800	2712.43	-78.86	145.15	-298.84	40°10'24.292"N	104°45'29.082"W	0.49	
2842.00	14.300	283.200	2800.53	-78.98	150.08	-321.08	40°10'24.341"N	104°45'29.368"W	0.58	
2933.00	12.900	285.400	2888.98	-79.76	155.34	-341.82	40°10'24.393"N	104°45'29.635"W	1.64	
3025.00	13.200	290.000	2978.60	-81.76	161.66	-361.59	40°10'24.456"N	104°45'29.890"W	1.17	
3115.00	13.900	291.500	3066.10	-84.91	169.14	-381.30	40°10'24.529"N	104°45'30.144"W	0.87	
3207.00	14.900	296.300	3155.21	-89.59	178.43	-402.19	40°10'24.621"N	104°45'30.413"W	1.69	
3298.00	13.800	296.500	3243.37	-95.13	188.45	-422.39	40°10'24.720"N	104°45'30.673"W	1.21	
3392.00	13.000	300.500	3334.81	-101.23	198.82	-441.54	40°10'24.823"N	104°45'30.920"W	1.30	
3487.00	13.700	299.500	3427.24	-107.94	209.79	-460.53	40°10'24.931"N	104°45'31.165"W	0.78	
3581.00	12.800	301.300	3518.74	-114.67	220.68	-479.12	40°10'25.039"N	104°45'31.404"W	1.05	
3676.00	12.200	303.000	3611.49	-121.68	231.61	-496.53	40°10'25.147"N	104°45'31.628"W	0.74	
3772.00	14.500	304.600	3704.89	-129.87	243.96	-514.93	40°10'25.269"N	104°45'31.866"W	2.43	
3866.00	14.400	302.700	3795.92	-138.46	256.96	-534.46	40°10'25.397"N	104°45'32.117"W	0.52	
3961.00	14.600	300.200	3887.89	-146.31	269.36	-554.74	40°10'25.520"N	104°45'32.378"W	0.69	
4056.00	15.000	296.600	3979.74	-153.07	280.89	-576.09	40°10'25.634"N	104°45'32.653"W	1.06	
4150.00	14.600	298.400	4070.62	-159.42	291.97	-597.38	40°10'25.743"N	104°45'32.928"W	0.65	



# Actual Wellpath Report

CANNON 15N-3HZ AWP

Page 3 of 6



## REFERENCE WELLPATH IDENTIFICATION

Operator	KERR-MCGEE OIL & GAS ONSHORE LP	Slot	SLOT#01 CANNON 15N-3HZ (516'FNL & 904'FEL, SEC. 03)
Area	COLORADO	Well	CANNON 15N-3HZ
Field	WELD COUNTY (KERR MCGEE)	Wellbore	CANNON 15N-3HZ AWP
Facility	SEC.03-T2N-R66W		

## WELLPATH DATA (137 stations)

MD [ft]	Inclination [°]	Azimuth [°]	TVD [ft]	Vert Sect [ft]	North [ft]	East [ft]	Latitude	Longitude	DLS [°/100ft]	Comments
4245.00	16.000	296.200	4162.25	-165.93	303.45	-619.67	40°10'25.857"N	104°45'33.215"W	1.60	
4339.00	15.900	297.100	4252.64	-172.39	315.04	-642.75	40°10'25.971"N	104°45'33.512"W	0.28	
4434.00	14.600	296.800	4344.29	-178.76	326.36	-665.02	40°10'26.083"N	104°45'33.799"W	1.37	
4529.00	14.100	294.200	4436.32	-184.20	336.50	-686.27	40°10'26.183"N	104°45'34.073"W	0.86	
4623.00	15.100	290.800	4527.29	-188.42	345.55	-708.16	40°10'26.273"N	104°45'34.355"W	1.40	
4717.00	14.400	289.400	4618.19	-191.73	353.78	-730.63	40°10'26.354"N	104°45'34.644"W	0.84	
4813.00	14.500	288.200	4711.16	-194.49	361.50	-753.30	40°10'26.430"N	104°45'34.936"W	0.33	
4908.00	14.700	293.500	4803.09	-198.10	370.02	-775.66	40°10'26.514"N	104°45'35.224"W	1.42	
5003.00	14.200	294.800	4895.09	-203.02	379.71	-797.29	40°10'26.610"N	104°45'35.503"W	0.63	
5098.00	14.000	298.600	4987.23	-208.81	390.10	-817.96	40°10'26.713"N	104°45'35.769"W	1.00	
5192.00	12.700	298.100	5078.68	-214.86	400.41	-837.06	40°10'26.815"N	104°45'36.015"W	1.39	
5287.00	10.600	299.100	5171.72	-220.27	409.58	-853.90	40°10'26.905"N	104°45'36.232"W	2.22	
5382.00	9.300	298.200	5265.29	-224.94	417.46	-868.30	40°10'26.983"N	104°45'36.418"W	1.38	
5476.00	7.800	298.900	5358.24	-228.87	424.13	-880.58	40°10'27.049"N	104°45'36.576"W	1.60	
5571.00	5.900	299.800	5452.56	-232.20	429.67	-890.46	40°10'27.104"N	104°45'36.703"W	2.00	
5665.00	4.500	301.600	5546.17	-234.89	434.00	-897.80	40°10'27.147"N	104°45'36.798"W	1.50	
5762.00	3.400	302.600	5642.94	-237.16	437.55	-903.46	40°10'27.182"N	104°45'36.871"W	1.14	
5856.00	1.200	303.400	5736.86	-238.49	439.59	-906.63	40°10'27.202"N	104°45'36.912"W	2.34	
5951.00	1.400	312.500	5831.83	-239.44	440.92	-908.32	40°10'27.215"N	104°45'36.933"W	0.30	
6140.00	4.200	319.400	6020.59	-244.79	447.74	-914.53	40°10'27.282"N	104°45'37.013"W	1.49	
6234.00	2.700	301.300	6114.42	-247.60	451.50	-918.66	40°10'27.320"N	104°45'37.067"W	1.95	
6328.00	2.000	234.300	6208.36	-247.11	451.70	-921.88	40°10'27.322"N	104°45'37.108"W	2.83	
6423.00	0.800	192.300	6303.33	-245.21	450.08	-923.37	40°10'27.306"N	104°45'37.127"W	1.58	
6517.00	1.100	178.200	6397.32	-243.68	448.54	-923.48	40°10'27.290"N	104°45'37.129"W	0.40	
6708.00	0.300	129.900	6588.30	-241.67	446.38	-923.04	40°10'27.269"N	104°45'37.123"W	0.49	
6755.00	0.700	153.700	6635.30	-241.39	446.05	-922.82	40°10'27.266"N	104°45'37.120"W	0.94	
6803.00	2.600	182.000	6683.28	-240.09	444.70	-922.73	40°10'27.252"N	104°45'37.119"W	4.19	
6850.00	6.100	184.500	6730.13	-236.56	441.14	-922.96	40°10'27.217"N	104°45'37.122"W	7.46	
6896.00	10.000	188.000	6775.67	-230.15	434.75	-923.71	40°10'27.154"N	104°45'37.132"W	8.54	
6943.00	13.900	188.800	6821.65	-220.45	425.12	-925.14	40°10'27.059"N	104°45'37.150"W	8.31	
6991.00	17.800	185.800	6867.81	-207.39	412.12	-926.76	40°10'26.930"N	104°45'37.171"W	8.30	
7038.00	22.100	185.300	6911.98	-191.47	396.16	-928.31	40°10'26.773"N	104°45'37.191"W	9.16	
7085.00	26.100	182.100	6954.88	-172.50	377.02	-929.50	40°10'26.584"N	104°45'37.206"W	8.95	
7132.00	30.900	182.500	6996.17	-150.41	354.62	-930.41	40°10'26.362"N	104°45'37.218"W	10.22	
7180.00	35.600	181.200	7036.30	-124.53	328.32	-931.24	40°10'26.102"N	104°45'37.229"W	9.90	
7227.00	41.200	180.500	7073.12	-95.92	299.14	-931.66	40°10'25.814"N	104°45'37.234"W	11.95	
7275.00	46.900	180.400	7107.61	-63.26	265.78	-931.92	40°10'25.484"N	104°45'37.237"W	11.88	
7322.00	53.200	180.600	7137.77	-27.99	229.77	-932.24	40°10'25.128"N	104°45'37.241"W	13.41	
7371.00	58.100	181.300	7165.41	11.68	189.34	-932.92	40°10'24.729"N	104°45'37.250"W	10.07	
7418.00	60.100	181.900	7189.54	51.32	149.03	-934.05	40°10'24.331"N	104°45'37.265"W	4.39	
7466.00	62.000	180.800	7212.78	92.57	107.04	-935.03	40°10'23.916"N	104°45'37.277"W	4.44	
7513.00	64.500	180.600	7233.93	133.70	65.08	-935.54	40°10'23.501"N	104°45'37.284"W	5.33	
7561.00	67.200	179.100	7253.57	176.48	21.28	-935.42	40°10'23.068"N	104°45'37.282"W	6.31	
7608.00	70.300	179.400	7270.60	219.17	-22.51	-934.85	40°10'22.635"N	104°45'37.275"W	6.62	
7657.00	74.900	181.200	7285.25	264.92	-69.26	-935.10	40°10'22.173"N	104°45'37.278"W	10.02	



# Actual Wellpath Report

CANNON 15N-3HZ AWP

Page 4 of 6



## REFERENCE WELLPATH IDENTIFICATION

Operator	KERR-MCGEE OIL & GAS ONSHORE LP	Slot	SLOT#01 CANNON 15N-3HZ (516'FNL & 904'FEL, SEC. 03)
Area	COLORADO	Well	CANNON 15N-3HZ
Field	WELD COUNTY (KERR MCGEE)	Wellbore	CANNON 15N-3HZ AWB
Facility	SEC.03-T2N-R66W		

## WELLPATH DATA (137 stations) † = interpolated/extrapolated station

MD [ft]	Inclination [°]	Azimuth [°]	TVD [ft]	Vert Sect [ft]	North [ft]	East [ft]	Latitude	Longitude	DLS [°/100ft]	Comments
7704.00	78.100	181.100	7296.22	309.77	-114.94	-936.02	40°10'21.722"N	104°45'37.290"W	6.81	
7753.00	82.600	180.700	7304.43	357.13	-163.23	-936.78	40°10'21.245"N	104°45'37.300"W	9.22	
7832.00†	86.915	180.434	7311.65	434.17	-241.88	-937.56	40°10'20.468"N	104°45'37.310"W	5.47	7" CASING POINT
7872.00	89.100	180.300	7313.04	473.30	-281.85	-937.81	40°10'20.073"N	104°45'37.313"W	5.47	
7969.00	90.400	179.000	7313.46	567.98	-378.84	-937.22	40°10'19.114"N	104°45'37.305"W	1.90	
8063.00	90.400	177.700	7312.81	659.26	-472.80	-934.51	40°10'18.186"N	104°45'37.270"W	1.38	
8158.00	90.200	176.700	7312.31	751.03	-567.68	-929.87	40°10'17.248"N	104°45'37.211"W	1.07	
8252.00	91.400	178.100	7311.00	841.91	-661.57	-925.61	40°10'16.320"N	104°45'37.156"W	1.96	
8348.00	90.400	178.000	7309.49	934.99	-757.50	-922.34	40°10'15.372"N	104°45'37.113"W	1.05	
8443.00	89.800	177.800	7309.32	1027.06	-852.44	-918.86	40°10'14.434"N	104°45'37.069"W	0.67	
8540.00	90.200	177.100	7309.32	1120.87	-949.34	-914.55	40°10'13.476"N	104°45'37.013"W	0.83	
8636.00	90.400	178.600	7308.82	1213.88	-1045.27	-910.94	40°10'12.528"N	104°45'36.966"W	1.58	
8731.00	91.300	180.300	7307.41	1306.53	-1140.25	-910.03	40°10'11.590"N	104°45'36.955"W	2.02	
8826.00	88.800	182.400	7307.33	1399.83	-1235.21	-912.27	40°10'10.651"N	104°45'36.983"W	3.44	
8921.00	87.700	182.200	7310.23	1493.38	-1330.09	-916.08	40°10'09.714"N	104°45'37.033"W	1.18	
9015.00	88.400	182.000	7313.43	1585.87	-1423.97	-919.52	40°10'08.786"N	104°45'37.077"W	0.77	
9109.00	88.200	181.900	7316.22	1678.34	-1517.88	-922.72	40°10'07.858"N	104°45'37.118"W	0.24	
9203.00	87.400	181.500	7319.83	1770.70	-1611.77	-925.51	40°10'06.930"N	104°45'37.154"W	0.95	
9299.00	87.800	180.400	7323.85	1864.78	-1707.67	-927.10	40°10'05.983"N	104°45'37.174"W	1.22	
9395.00	89.500	181.300	7326.11	1958.88	-1803.62	-928.52	40°10'05.034"N	104°45'37.193"W	2.00	
9489.00	90.800	179.800	7325.86	2050.95	-1897.62	-929.42	40°10'04.106"N	104°45'37.204"W	2.11	
9584.00	90.800	180.000	7324.54	2143.77	-1992.61	-929.26	40°10'03.167"N	104°45'37.202"W	0.21	
9679.00	91.000	180.300	7323.04	2236.67	-2087.59	-929.51	40°10'02.228"N	104°45'37.205"W	0.38	
9774.00	90.500	180.200	7321.80	2329.61	-2182.58	-929.92	40°10'01.289"N	104°45'37.210"W	0.54	
9869.00	90.800	180.700	7320.72	2422.63	-2277.57	-930.67	40°10'00.351"N	104°45'37.220"W	0.61	
9963.00	90.700	181.100	7319.49	2514.80	-2371.55	-932.14	40°09'59.422"N	104°45'37.239"W	0.44	
10058.00	91.100	181.200	7318.00	2608.04	-2466.52	-934.05	40°09'58.484"N	104°45'37.263"W	0.43	
10154.00	91.000	181.700	7316.24	2702.35	-2562.48	-936.48	40°09'57.535"N	104°45'37.295"W	0.53	
10248.00	89.400	183.600	7315.91	2795.04	-2656.37	-940.82	40°09'56.608"N	104°45'37.351"W	2.64	
10342.00	89.200	181.700	7317.06	2887.73	-2750.26	-945.17	40°09'55.680"N	104°45'37.407"W	2.03	
10437.00	88.900	181.700	7318.64	2981.14	-2845.20	-947.99	40°09'54.741"N	104°45'37.443"W	0.32	
10532.00	89.300	181.300	7320.13	3074.48	-2940.16	-950.47	40°09'53.803"N	104°45'37.475"W	0.60	
10628.00	88.800	179.800	7321.72	3168.50	-3036.14	-951.40	40°09'52.855"N	104°45'37.487"W	1.65	
10723.00	88.900	180.100	7323.63	3261.32	-3131.12	-951.31	40°09'51.916"N	104°45'37.485"W	0.33	
10817.00	89.700	179.500	7324.77	3353.13	-3225.11	-950.99	40°09'50.987"N	104°45'37.481"W	1.06	
10912.00	89.400	179.300	7325.52	3445.78	-3320.10	-949.99	40°09'50.048"N	104°45'37.468"W	0.38	
11006.00	89.400	178.400	7326.51	3537.24	-3414.07	-948.10	40°09'49.120"N	104°45'37.444"W	0.96	
11101.00	89.400	178.100	7327.50	3629.44	-3509.02	-945.20	40°09'48.182"N	104°45'37.407"W	0.32	
11196.00	90.600	178.400	7327.50	3721.65	-3603.98	-942.30	40°09'47.243"N	104°45'37.369"W	1.30	
11290.00	90.700	178.200	7326.43	3812.90	-3697.93	-939.51	40°09'46.315"N	104°45'37.333"W	0.24	
11384.00	90.400	179.000	7325.53	3904.27	-3791.90	-937.22	40°09'45.386"N	104°45'37.304"W	0.91	
11478.00	89.600	180.500	7325.53	3996.06	-3885.89	-936.81	40°09'44.457"N	104°45'37.298"W	1.81	
11573.00	90.600	177.700	7325.37	4088.59	-3980.87	-935.31	40°09'43.519"N	104°45'37.279"W	3.13	
11667.00	90.800	178.300	7324.22	4179.72	-4074.81	-932.03	40°09'42.590"N	104°45'37.237"W	0.67	
11762.00	90.000	177.800	7323.55	4271.84	-4169.75	-928.80	40°09'41.652"N	104°45'37.195"W	0.99	





# Actual Wellpath Report

## CANNON 15N-3HZ AWP

Page 5 of 6



### REFERENCE WELLPATH IDENTIFICATION

Operator	KERR-MCGEE OIL & GAS ONSHORE LP	Slot	SLOT#01 CANNON 15N-3HZ (516'FNL & 904'FEL, SEC. 03)
Area	COLORADO	Well	CANNON 15N-3HZ
Field	WELD COUNTY (KERR MCGEE)	Wellbore	CANNON 15N-3HZ AWB
Facility	SEC.03-T2N-R66W		

### WELLPATH DATA (137 stations)

MD [ft]	Inclination [°]	Azimuth [°]	TVD [ft]	Vert Sect [ft]	North [ft]	East [ft]	Latitude	Longitude	DLS [°/100ft]	Comments
11813.00	90.200	178.000	7323.46	4321.27	-4220.71	-926.93	40°09'41.149"N	104°45'37.171"W	0.55	LAST BHI MWD+IFR SURVEY
11878.00	90.200	178.000	7323.24	4384.29	-4285.67	-924.66	40°09'40.507"N	104°45'37.142"W	0.00	PROJECTION TO BIT

### HOLE & CASING SECTIONS - Ref Wellbore: CANNON 15N-3HZ AWB Ref Wellpath: CANNON 15N-3HZ AWP

String/Diameter	Start MD [ft]	End MD [ft]	Interval [ft]	Start TVD [ft]	End TVD [ft]	Start N/S [ft]	Start E/W [ft]	End N/S [ft]	End E/W [ft]
13.5in Open Hole	13.00	816.00	803.00	13.00	816.00	0.00	0.00	0.93	0.83
9.625in Casing Surface	13.00	816.00	803.00	13.00	816.00	0.00	0.00	0.93	0.83
8.75in Open Hole	816.00	7860.00	7044.00	816.00	7312.78	0.93	0.83	-269.85	-937.75
7in Casing Intermediate	13.00	7832.00	7819.00	13.00	7311.65	0.00	0.00	-241.88	-937.56
6.125in Open Hole	7860.00	11878.00	4018.00	7312.78	7323.24	-269.85	-937.75	-4285.67	-924.66

### TARGETS

Name	MD [ft]	TVD [ft]	North [ft]	East [ft]	Grid East [US ft]	Grid North [US ft]	Latitude	Longitude	Shape
CANNON 1-3HZ SECTION LINES		0.00	0.30	60.08	3207681.19	1306743.33	40°10'22.861"N	104°45'24.458"W	polygon
CANNON 15N-3HZ BHL ON PLAT REV-1 (460'FSL & 1835'FEL, SEC.03)		7230.00	-4311.14	-936.10	3206721.20	1302423.88	40°09'40.255"N	104°45'37.289"W	point
CANNON 15N-3HZ BHL ON PLAT REV-2 (460'FSL & 1835'FEL, SEC.03)		7316.00	-4311.14	-936.10	3206721.20	1302423.88	40°09'40.255"N	104°45'37.289"W	point
CANNON 15N-3HZ LAND BOX		8100.00	0.00	0.00	3207621.12	1306742.52	40°10'22.858"N	104°45'25.232"W	polygon
CANNON 1-3HZ HARDLINES (460' SETBACKS)		8200.00	0.30	60.08	3207681.19	1306743.33	40°10'22.861"N	104°45'24.458"W	polygon

### WELLPATH COMPOSITION - Ref Wellbore: CANNON 15N-3HZ AWB Ref Wellpath: CANNON 15N-3HZ AWP

Start MD [ft]	End MD [ft]	Positional Uncertainty Model	Log Name/Comment	Wellbore
13.00	713.00	Generic gyro - continuous (Standard)	MS GYRO SURVEYS <113-713>	CANNON 15N-3HZ AWB
713.00	7753.00	NaviTrak (MAGCORR,IFR)	BHI MWD+IFR SURVEYS 8 3/4" HOLE <869-7803>	CANNON 15N-3HZ AWB
7753.00	11813.00	OnTrak (MAGCORR,IFR)	BHI MWD+IFR SURVEYS 6 1/8" HOLE <7872-11813>	CANNON 15N-3HZ AWB
11813.00	11878.00	Blind Drilling (std)	Projection to bit	CANNON 15N-3HZ AWB



# Actual Wellpath Report

CANNON 15N-3HZ AWP

Page 6 of 6



## REFERENCE WELLPATH IDENTIFICATION

Operator	KERR-MCGEE OIL & GAS ONSHORE LP	Slot	SLOT#01 CANNON 15N-3HZ (516'FNL & 904'FEL, SEC. 03)
Area	COLORADO	Well	CANNON 15N-3HZ
Field	WELD COUNTY (KERR MCGEE)	Wellbore	CANNON 15N-3HZ AWP
Facility	SEC.03-T2N-R66W		

## WELLPATH COMMENTS

MD [ft]	Inclination [°]	Azimuth [°]	TVD [ft]	Comment
13.00	0.000	136.090	13.00	TIE-ON
113.00	0.180	136.090	113.00	BEGIN GYRO SURVEYS
713.00	0.220	8.170	713.00	TIE-INTO GYRO SURVEYS
869.00	0.500	126.000	868.99	BEGIN BHI MWD+IFR SURVEYS
7832.00	86.915	180.434	7311.65	7" CASING POINT
11813.00	90.200	178.000	7323.46	LAST BHI MWD+IFR SURVEY
11878.00	90.200	178.000	7323.24	PROJECTION TO BIT