

McElvain Energy, Inc.
Maroon 18-4
P & A
August 2013

LOCATION: NWNW SEC 18 T2S R46W
306' FNL & 579' FWL
Yuma County, CO

API: 05-125-11685

TD: 2696' **PBTD:** 2663' (Tag-9/4/11) 2,671 (CBL-8/29/11) **KB:** 6' **GL:** 4113'

BACKGROUND: Maroon 18-14 was drilled and initially completed in 2011. The well tested non-commercial following a FRAC. To date the well has CUM'D 0 BCF. Due to non-commercial rates and low gas prices, this well will be P&A'D.

CURRENT STATUS: SI due to low gas prices & high water cut

PURPOSE: P & A well

CASING:

7", 17# , J-55 @ 454' in 9 7/8" hole
Cemented with 210 sxs
50/50 Poz, 3 % CaCl. 25% Flo-cel Yield 1.07, 15.2 PPG
TOC @ surface (Returns)

4 1/2", 10.5# , J-55@ 2686' in 6 1/4" hole
Cemented in Single Stage as follows:
LEAD: 171 sx lead 50/50 Poz, 12% Gel. 2% CaCl. Yield 2.21, 12 PPG.
TAIL: 73 sx tail 50/50 Poz, 2% Gel, 1% CFL-80. Yield 1.33, 13.8 PPG.

TOC @ Surface from CBL (7 bbls cement returned at surface)

FORMATION TOPS:

Niobrara	TVD/SS TVD 2485'/1628'
----------	---------------------------

PERFORATIONS:

Niobrara: 2494'-2524' (3 SPF) 60 – 0.40" holes (2011)

Frac'd: 2494'-2524'

Frac Notes: 60 Tons CO₂, 33,000# 16/30 SAND. 500 GAL 7.5% HCL. Breakdown @ 1760#. ISIP=3100, P(5)=1144, P(10)=1071, P(15)=1036. Opened well @ 960#.

TUBING:

None

ROD STRING:

None

PROCEDURE:

1. Prior to Service rig MIRU, set temporary anchors, blow down well to FB tank. Spot in tubing float w/ ~ 2,750 feet 2 3/8" J-55 tbg.
2. MIRU rig. Install wellhead and BOPE.
3. Bullhead \pm 20 bbls fresh water down casing prior to plug set.
4. RU WL w/packoff. M/U CIBP & RIH to set @ ~ 2444' (set within 50' of top perf @ 2,494).
Note: Casing collars @ 2425 & 2467. Stand down WL.
5. Load hole w/water. Release WL.
6. TIH open-ended w/2-3/8" tbg to tag CIBP.
7. Mix, pump, and equalize 25 sx (360') cmt PLUG #1 (Bottom Plug) from ~2444' to \pm 2084'.
8. LD all but 507' of tbg.
9. Mix, pump, and circulate ~ 35 sx (507') cmt PLUG #2 (Surface Plug).
10. Dig up wellhead & cut-off 4' below surface. Verify rat & mouse hole abandonment. Top off production casing with cement. Weld plate over stub. Re-claim surface per lease agreement and state regulations.

Note: Plugging Cement API Class 'A', 1.29 ft³/sk Yield & 15.0 ppg Density

McElvain Energy, Inc.

Maroon 18-4
API 0512511685
NWNW SEC 18 T2S R46W
306' FSL & 579' FWL
39.889120/-102.574280
Drilled 7/2011
Drawing Updated by Jeff
7/1/2013

all depths refer to KB 6' above mat
GL @ 4113'

Surface Casing Detail

Hole: 9 7/8" @ 459'
7", 17#, J-55, 7 jts, cmtd @ 454'
Pumped 210 sx w/ 7 bbls to surface
TOC @ Surface

Production Casing Detail

Hole: 6 1/4" @ 2696'
4 1/2", 10.5#, J-55, 65 jts, cmtd @ 2686'
Pumped 171 sx lead and 73 sx tail
Circulated to surface
TOC @ Surface (CBL)

Tubing Detail

None

Rod Detail

None

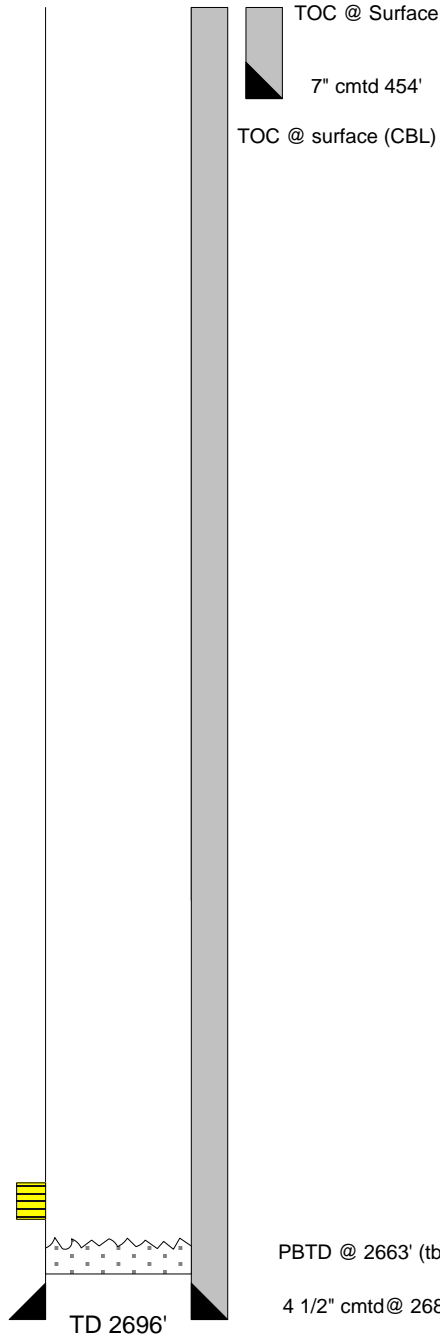
Perforations:

2494'-2524' 8/29/2011
3 SPF, .40" Holes

Frac Summary:

8/30/11—CO2 FRAC-2494'-2524'(gross)
60 Tons CO2, 33,000# 16/30
SAND. 500 GAL 7.5% HCL.
Breakdown @ 1760#. ISIP=3100
P(5)=1144, P(10)=1071, P(15)=
1036. Opened well @ 960#.

2494'-2524'



Tbg = 0.00387 bbl/ft
Csg = 0.01590 bbl/ft
Ann = 0.02188 bbl/ft
C+A = 0.03778 bbl/ft

Flag Jts:

PBTD @ 2663' (tbg tag)

4 1/2" cmtd @ 2686'

TD 2696'

VisioDocument

McElvain Energy, Inc.

Maroon 18-4
 API 0512511685
 NWNW SEC 18 T2S R46W
 306' FSL & 579' FWL
 39.889120/-102.574280
 Drilled 7/2011
 Drawing Updated by Jeff
 7/1/2013

all depths refer to KB 6' above mat
 GL @ 4113'

Surface Casing Detail

Hole: 9 7/8" @ 459'
 7", 17#, J-55, 7 jts, cmtd @ 454'
 Pumped 210 sx w/ 7 bbls to surface
 TOC @ Surface

Production Casing Detail

Hole: 6 1/4" @ 2696'
 4 1/2", 10.5#, J-55, 65 jts, cmtd @ 2686'
 Pumped 171 sx lead and 73 sx tail
 Circulated to surface
 TOC @ Surface (CBL)

Tubing Detail

None

Rod Detail

None

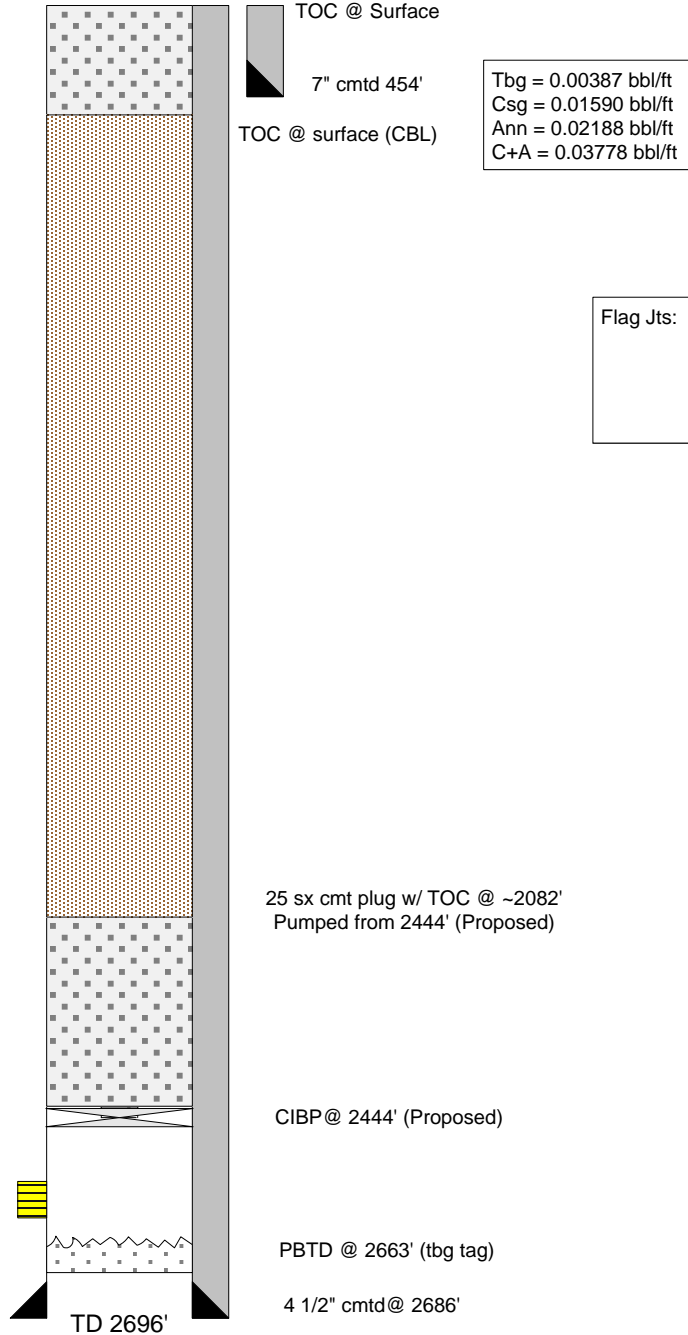
Perforations:

2494'-2524' 8/29/2011
 3 SPF, .40" Holes

Frac Summary:

8/30/11—CO2 FRAC-2494'-2524'(gross)
 60 Tons CO2, 33,000# 16/30
 SAND. 500 GAL 7.5% HCL.
 Breakdown @ 1760#. ISIP=3100
 P(5)=1144, P(10)=1071, P(15)=
 1036. Opened well @ 960#.

35 sx cmt plug pumped from 454'
 TOC @ Surface (Proposed)



Tbg = 0.00387 bbl/ft
 Csg = 0.01590 bbl/ft
 Ann = 0.02188 bbl/ft
 C+A = 0.03778 bbl/ft

Flag Jts: