

The Road to Excellence Starts with Safety

Sold To #: 300721	Ship To #: 300721	Quote #:	Sales Order #: 900386083
Customer: WPX ENERGY ROCKY MOUNTAIN LLC-EBUS		Customer Rep: Towers, Ron	
Well Name: RWF	Well #: 323-29	API/UWI #:	
Field: RULSION	City (SAP): TULSA	County/Parish: Garfield	State: Colorado
Contractor: Nabors	Rig/Platform Name/Num: Nabors 573		
Job Purpose: Cement Surface Casing			
Well Type: Development Well		Job Type: Cement Surface Casing	
Sales Person: MAYO, MARK		Srvc Supervisor: ANDREWS, ANTHONY	MBU ID Emp #: 321604

Job Personnel

HES Emp Name	Exp Hrs	Emp #	HES Emp Name	Exp Hrs	Emp #	HES Emp Name	Exp Hrs	Emp #
ANDERSON, ADAM S	6	456683	ANDREWS, ANTHONY Michael	6	321604	ATKINSON, STEPHAN Michael	6	513940
SIMINEO, JEROD M	6	479954						

Equipment

HES Unit #	Distance-1 way	HES Unit #	Distance-1 way	HES Unit #	Distance-1 way	HES Unit #	Distance-1 way

Job Hours

Date	On Location Hours	Operating Hours	Date	On Location Hours	Operating Hours	Date	On Location Hours	Operating Hours
4/25/13	4.5	1	4/26/13	2.5	2.5			
TOTAL		<i>Total is the sum of each column separately</i>						

Job

Job Times

Formation Name	Formation Depth (MD) Top	Bottom	Called Out	Date	Time	Time Zone
Form Type	BHST		On Location	25 - Apr - 2013	17:00	MST
Job depth MD	1175. ft	Job Depth TVD	Job Started	25 - Apr - 2013	20:30	MST
Water Depth		Wk Ht Above Floor	Job Completed	26 - Apr - 2013	00:32	MST
Perforation Depth (MD) From		To	Departed Loc	26 - Apr - 2013	01:22	MST
					02:30	MST

Well Data

Description	New / Used	Max pressure psig	Size in	ID in	Weight lbm/ft	Thread	Grade	Top MD ft	Bottom MD ft	Top TVD ft	Bottom TVD ft

Tools and Accessories

Type	Size	Qty	Make	Depth	Type	Size	Qty	Make	Depth	Type	Size	Qty	Make
Guide Shoe					Packer					Top Plug			
Float Shoe					Bridge Plug					Bottom Plug			
Float Collar					Retainer					SSR plug set			
Insert Float										Plug Container			
Stage Tool										Centralizers			

Miscellaneous Materials

Gelling Agt	Conc	Surfactant	Conc	Acid Type	Qty	Conc	%
Treatment Fld	Conc	Inhibitor	Conc	Sand Type	Size	Qty	

Fluid Data

Stage/Plug #: 1

Fluid #	Stage Type	Fluid Name	Qty	Qty uom	Mixing Density lbm/gal	Yield ft3/sk	Mix Fluid Gal/sk	Rate bbl/min	Total Mix Fluid Gal/sk

Stage/Plug #: 1

Fluid #	Stage Type	Fluid Name	Qty	Qty uom	Mixing Density uom	Yield uom	Mix Fluid uom	Rate uom	Total Mix Fluid uom

Stage/Plug #: 1									
Fluid #	Stage Type	Fluid Name	Qty	Qty uom	Mixing Density lbm/gal	Yield ft3/sk	Mix Fluid Gal/sk	Rate bbl/min	Total Mix Fluid Gal/sk
1	Fresh Water Spacer		20.00	bbl	.	.0	.0	.0	
2	VersaCem Lead Cement	VERSACEM (TM) SYSTEM (452010)	160.0	sacks	12.3	2.38	13.75		13.75
3	VersaCem Tail Cement	VERSACEM (TM) SYSTEM (452010)	160.0	sacks	12.8	2.11	11.75		11.75
4	Fresh Water Displacement		88.2	bbl	.	.0	.0	.0	
Calculated Values		Pressures			Volumes				
Displacement	88.2	Shut In: Instant		Lost Returns	N	Cement Slurry	127.9	Pad	
Top Of Cement	SURFACE	5 Min		Cement Returns	28	Actual Displacement	88.2	Treatment	
Frac Gradient		15 Min		Spacers	20	Load and Breakdown		Total Job	236.1
Rates									
Circulating	RIG	Mixing	8	Displacement	10-2	Avg. Job	8		
Cement Left In Pipe	Amount	44 ft	Reason	Shoe Joint					
Frac Ring # 1 @	ID	Frac ring # 2 @	ID	Frac Ring # 3 @	ID	Frac Ring # 4 @	ID		
The Information Stated Herein Is Correct				Customer Representative Signature					

The Road to Excellence Starts with Safety

Sold To #: 300721	Ship To #: 300721	Quote #:	Sales Order #: 900386083
Customer: WPX ENERGY ROCKY MOUNTAIN LLC-EBUS		Customer Rep: Towers, Ron	
Well Name: RWF	Well #: 323-29	API/UWI #:	
Field: RULSION	City (SAP): TULSA	County/Parish: Garfield	State: Colorado
Legal Description:			
Lat:		Long:	
Contractor: Nabors		Rig/Platform Name/Num: Nabors 573	
Job Purpose: Cement Surface Casing			Ticket Amount:
Well Type: Development Well		Job Type: Cement Surface Casing	
Sales Person: MAYO, MARK		Srvc Supervisor: ANDREWS, ANTHONY	MBU ID Emp #: 321604

Activity Description	Date/Time	Cht #	Rate bbl/min	Volume bbl		Pressure psig		Comments
				Stage	Total	Tubing	Casing	
Pre-Rig Up Safety Meeting	04/25/2013 11:00							
Rig-Up Equipment	04/25/2013 11:05							
Call Out	04/25/2013 17:00							
Pre-Convoy Safety Meeting	04/25/2013 18:55							
Crew Leave Yard	04/25/2013 19:00							
Arrive At Loc	04/25/2013 20:30							
Assessment Of Location Safety Meeting	04/25/2013 20:35							
Other	04/25/2013 22:55							SPOT EQUIPMENT
Pre-Job Safety Meeting	04/26/2013 00:05							
Start Job	04/26/2013 00:32							
Test Lines	04/26/2013 00:34							3000 PSI TEST
Pump Spacer	04/26/2013 00:39		4	20			89.0	FRESH H2O SPACER
Pump Lead Cement	04/26/2013 00:46		8	67.8			230.0	160 SKS @ 12.3 PPG 2.38 YLD 13.75 GAL/SK H2O
Pump Tail Cement	04/26/2013 00:55		8	60.1			334.0	160 SKS @ 12.8 PPG 2.11 YLD 11.75 GAL/SK H2O
Shutdown	04/26/2013 01:03							
Drop Plug	04/26/2013 01:05							WASH UP ON TOP OF PLUG AS PER CUSTOMER REQUEST

Sold To #: 300721

Ship To #: 300721

Quote # :

Sales Order #: 900386083

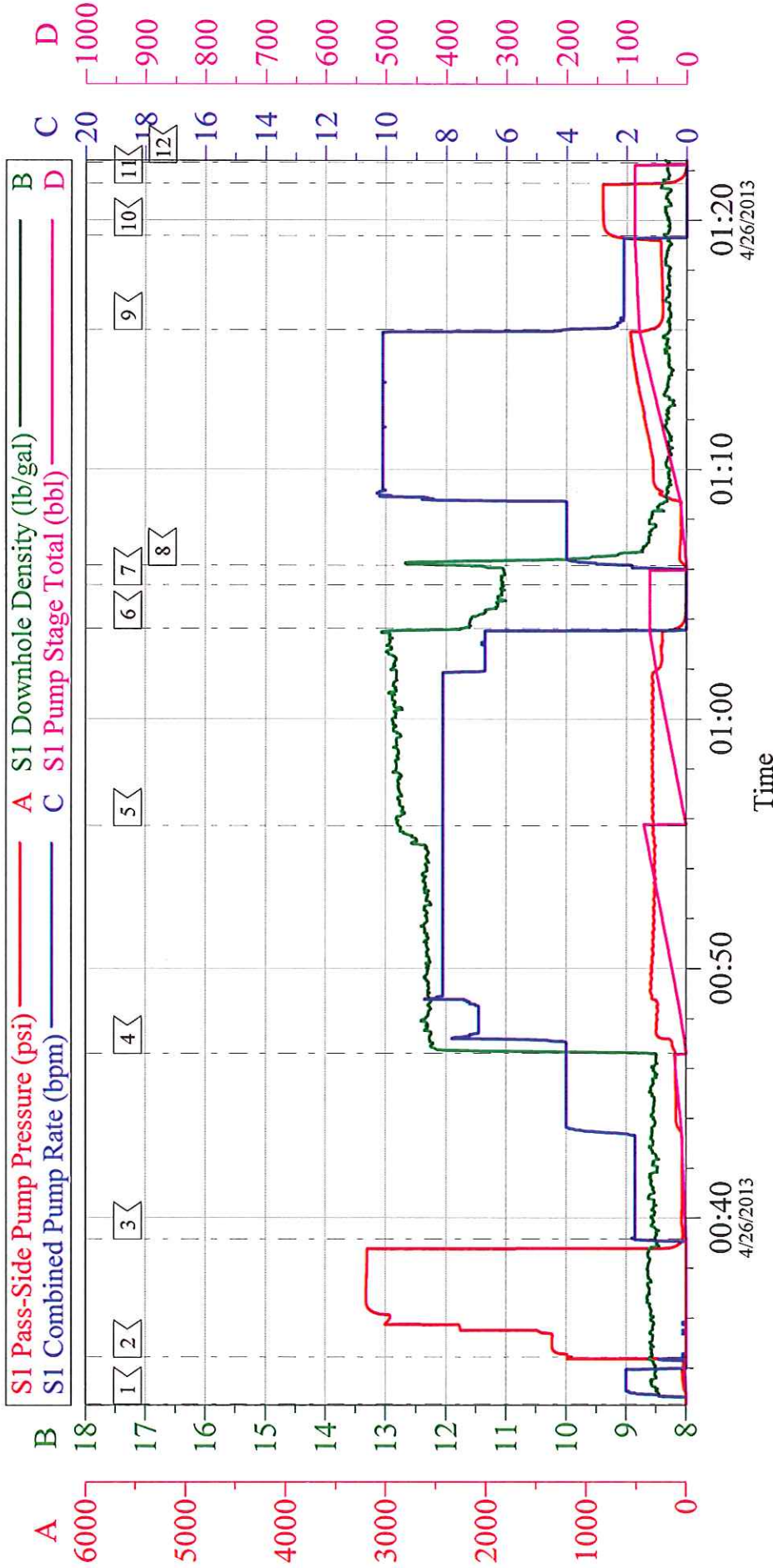
SUMMIT Version: 7.3.0079

Saturday, April 27, 2013 04:36:00

Activity Description	Date/Time	Cht #	Rate bbl/min	Volume bbl		Pressure psig		Comments
				Stage	Total	Tubing	Casing	
Pump Displacement	04/26/2013 01:06		10		88.2		265.0	FRESH H2O DISPLACEMENT
Slow Rate	04/26/2013 01:15		2	78			369.0	
Bump Plug	04/26/2013 01:19		2	88.2			824.0	PLUG BUMPED AT CALCULATED DISPLACEMENT
Check Floats	04/26/2013 01:21							FLOATS HELD
End Job	04/26/2013 01:22							
Post-Job Safety Meeting (Pre Rig-Down)	04/26/2013 01:35							40 LBS SUGAR USED. NO ADD HOURS CHARGED. PIPE WAS LEFT STATIC THROUGHOUT JOB. PLUG BUMPED AT CALCULATED DISPLACEMENT, FLOATS HELD. CIRCULATED 28 BBLS CEMENT TO SURFACE.
Rig-Down Equipment	04/26/2013 01:45							
Pre-Convoy Safety Meeting	04/26/2013 02:25							
Crew Leave Location	04/26/2013 02:30							THANK YOU FOR CHOOSING HALLIBURTON CEMENTING OF GRAND JUNCTION, COLORADO ANTHONY ANDREWS AND CREW

WPX - RWF 323-29

9 5/8" SURFACE



Local Event Log			
Intersection	SPPP	Intersection	SPPP
1 START JOB	00:32:32 -2.000	2 TEST LINES	00:34:25 1142
4 PUMP LEAD CEMENT	00:46:36 109.6	5 PUMP TAIL CEMENT	00:55:42 334.6
7 DROP PLUG	01:05:21 4.000	8 PUMP DISPLACEMENT	01:06:08 13.61
10 BUMP PLUG	01:19:22 739.8	11 CHECK FLOATS	01:21:28 226.6
		3 PUMP SPACER	00:39:09 33.15
		6 SHUTDOWN	01:03:36 106.9
		9 SLOW RATE	01:15:36 369.6
		12 END JOB	01:22:18 1.000

Customer: WPX	Job Date: 25-Apr-2013	Sales Order #: 900386083
Well Description: RWF 323-29	Job Type: SURFACE	ADC Used: YES
Company Rep: RON TOWERS	Cement Supervisor: ANTHONY ANDREWS	Elite #4: ADAM ANDERSON