



Weatherford®

6 3/4 in. & 4 3/4 in.
WeatherfordM/LWD™
Gamma Ray & Resistivity
1 in. & 5 in. TRUE VERTICAL DEPTH
RECORDED DATA

COMPANY Anadarko Petroleum
WELL Cannon 34C-10HZ
FIELD Wattenberg
RIG Xtreme 23
COUNTY Weld **STATE** Colorado
API # 05-123-36695

Company: Anadarko Petroleum
Well: Cannon 34C-10HZ
Field: Wattenberg
Rig: Xtreme 23
County: Weld

Location
 Latitude: 40.15889° N x = 3,204,399 ft Mag Decl: 8.65°
 Longitude: 104.76869° W y = 1,301,569 ft Mag Dip: 66.77°
 Other Services: Spectral Azimuthal Gamma, Directional, and Temperature

Permanent Datum: Mean Sea Level
Log Measured From: Drill Floor Elev: 4965.0 ft above perm. datum
Depth Reference: Drillers Tally Total Depth: 12001 ft
Depth Logged: 6883 ft to 12001 ft Runs: 4
Date Logged: 24-Apr-13 to 1-May-13 Spud Date: 21-Apr-13

Borehole Record		Casing Record				
Hole Size	From	To	Size	Weight	From	To
8.750 in.	896 ft	7808 ft	7.000 in.	26.0 lb/ft	Surface	7808 ft
6.125 in.	7808 ft	12001 ft				

Borehole Deviation Record			Mud Record			
Hole Size	Min. Inc.	Max. Inc.	Type	Weight	From	To
8.750 in.	0.41°	80.88°	WBM	8.50 ppg - 9.80 ppg	896 ft	12001 ft
6.125 in.	87.16°	92.22°				

All interpretations of log data are opinions based on inferences from electrical or other measurements. Weatherford International does not guarantee the accuracy or correctness of any interpretation or recommendation and we shall not be liable or responsible for any loss, cost, damages or expenses incurred or sustained by anyone resulting from any interpretation or recommendation made by any of our employees or agents.

RUN SUMMARY

M/LWD Run Number		1	2	3	4			
Bit Size	in.	8.750	8.750	6.125	6.125			
Bit Type		PDC	PDC	PDC	PDC			
Bit TFA	sq.in.	1.330	1.540	1.243	1.243			
Bit Start Depth	ft	896	6865	7808	7905			
Bit End Depth	ft	6865	7808	7905	12001			
Top Log Interval	ft	na	6883	7728	7828			
Bottom Log Interval	ft	na	7808	7905	12001			
Begin Log Time	hrs	na	3:56	2:09	20:49			
Begin Log Date	DD-MMM-YY	na	24-Apr-13	27-Apr-13	28-Apr-13			
End Log Time	hrs	na	2:07	3:07	20:06			
End Log Date	DD-MMM-YY	na	25-Apr-13	27-Apr-13	1-May-13			
Drill or Wipe		Drill	Drill	Drill	Drill			
Flow Rate	gal/min	632	608	300	300			
Max AV / CV @ MWD	ft/min	499 / 171	481 / 282	492 / 348	492 / 365			
Min Inc @ Depth	deg @ ft	0.41 @ 1004	0.45 @ 6865	80.88 @ 7748	87.16 @ 11596			
Max Inc @ Depth	deg @ ft	17.67 @ 4279	80.88 @ 7748	80.88 @ 7748	92.22 @ 8095			

MUD DATA								
Depth	ft	6865	7808	7905	12001			
Fluid Type		WBM	WBM	WBM	WBM			
Mud Weight	ppg	8.50	9.50	9.80	9.80			
Plastic Viscosity	cP	1	6	11	12			
Solids / Sand	%	1.0 / 0.7	5.2 / 0.5	6.2 / 0.25	5.7 / 0.40			
NaCl Equiv. Chlorides	ppm	3630	3795	5775	4500			
pH		11.8	9.0	8.0	8.5			
Oil:Water Ratio	% Vol	1.0 : 99.0	5.5 : 94.5	1.5 : 98.5	3.0 : 97.0			
Rm @ Temperature	ohm-m @ deg F	na	na	1.60 @72°F	1.50 @72°F			
Rmc @ Temperature	ohm-m @ deg F	na	na	1.40 @72°F	1.31 @72°F			
Rmf @ Temperature	ohm-m @ deg F	na	na	1.37 @72°F	1.29 @72°F			
KCl	% Vol	0	0	0	0			
Client Representative		R. McPeters	R. McPeters	R. McPeters	R. McPeters			
WeatherfordLWD Engineer		D. Palmer	D. Palmer	T. Daily	T. Daily			

EQUIPMENT SUMMARY

M/LWD Run Number	1	2	3	4	
BTR / CDS Serial Number	44702 / 44736	44702 / 44736	na	na	
Battery Serial Number	403467909	403467909	na	na	
Gamma Ray Serial Number	na	2978	na	na	
CMS Serial Number	1592	1592	na	na	
Pulser Serial Number	18705	18705	na	na	
HEL Serial Number	na	na	NW131108PDSBI4.75	NW131110PDSBI4.75	
MFR Serial Number	na	na	NW131107RBBK4.75	NW131107RBBK4.75	
SAGR Serial Number	na	na	NW131109JB4.75	NW131109JB4.75	
Sensor to Bit Offsets / Acquisition Rates					
Directional	ft / sec	58.07 / RT	57.29 / RT	51.40 / RT	51.48 / RT
Spectral Gamma Ray	ft / sec	na	43.08 / 5	36.87 / 5	36.87 / 5
Resistivity	ft / sec	na	na	79.73 / 5	79.83 / 5
Other Information					
Total BHA Length	ft	115.07	115.37	102.73	102.83
BHA Assembly Type		Steerable	Steerable	Steerable	Steerable
Stabilizer Location	ft	na	na	28.76	28.73
Stabilizer Location	ft	na	na	97.54	97.50
Run Circulating Time	hr	35.93	19.90	3.62	87.04
Run Drilling Time	hr	21.96	8.42	0.58	41.71

MUD SUMMARY

Date and Time	Run	Bit Depth	Mud Weight	% K	Rm @ Temp	Rmf @ Temp	Rmc @ Temp	BHCT
23 Apr 13 @ 21:30	01	6865 ft	8.50 ppg	0	na	na	na	128° F
25 Apr 13 @ 10:45	02	7808 ft	9.50 ppg	0	na	na	na	170° F
27 Apr 13 @ 09:00	03	7905 ft	9.80 ppg	0	1.60 @ 72°F	1.40 @ 72°F	1.37 @ 72°F	163° F
02 May 13 @ 03:45	04	12001 ft	9.80 ppg	0	1.50 @ 72°F	1.31 @ 72°F	1.29 @ 72°F	226° F

M/LWD RUN REMARKS

Run Number: 2 :: RECORDED DATA LOG

WFT Services Provided:

Recorded and Real Time Logging: Gamma Ray and Temperature.

Directional Services: On demand Inclination and Azimuth.

Borehole and Environmental Correction:

Hole Size: 8.750 in.

Gamma Ray: Hole size, mudweight, Collar O.D., Collar I.D. and K1 factor.

Mud Weight: 9.50 ppg

Collar O.D.: 6.750 in.

K1 Factor: 3.179

Collar I.D.: 3.250 in.

Run Number: 3 :: RECORDED DATA LOG

WFT Services Provided:

Recorded and Real Time Logging: Spectral Azimuthal Gamma Ray, Deep and Shallow Resistivity, and Temperature.

Directional Services: On demand Inclination and Azimuth.

Borehole and Environmental Correction:

Hole Size: 6.125 in.

Gamma Ray: Corrected for mud weight, hole size and KCl concentration.

Mud Weight: 9.80 ppg

Resistivities: Corrected for borehole temperature, hole size, drilling fluid resistivity and dielectric correction.

Borehole Temperature: 163° F

Drilling Fluid Resistivity: 0.742 ohm-m @ 163° F

KCl Concentration: 0%

Run Number: 4 :: RECORDED DATA LOG

WFT Services Provided:

Recorded and Real Time Logging: Spectral Azimuthal Gamma Ray, Deep and Shallow Resistivity, and Temperature.

Directional Services: On demand Inclination and Azimuth.

Borehole and Environmental Correction:

Hole Size: 6.125 in.

Gamma Ray: Corrected for mud weight, hole size and KCl concentration.

Mud Weight: 9.80 ppg

Resistivities: Corrected for borehole temperature, hole size, drilling fluid resistivity and dielectric correction.

Borehole Temperature: 190° F

Drilling Fluid Resistivity: 0.541 ohm-m @ 226° F

KCl Concentration: 0%

M/LWD LOG COMMENTS

Comment No. 1-1

MWD Drilling Run 01

Start of MWD Drilling Run 01

Weatherford International provided 6 3/4 in. Directional services for Run 01. No Logging Performed.

Run 01 ended formation drilling April 23, 2013 at 16:53 at 6925 MD / 6793 TVD.

Comment No. 2-1

RECORDED DATA LOG

Start of MWD Drilling Run 02

Weatherford International provided 6 3/4 in. Directional, Gamma Ray, and Temperature for Run 02.

Run 02 started formation drilling April 24, 2013 at 3:56 at 6925 MD / 6793 TVD. Weatherford International logged the 8.750 in. borehole.

The WBM at the start of drilling was 8.50 ppg.

Comment No. 2-2

End of MWD Drilling Run 02

Run 02 ended drilling formation April 25, 2013 at 2:07 at 7808 MD / 7397 TVD.

The WBM at the end of drilling was 9.50 ppg.

Comment No. 3-1

RECORDED DATA LOG

Start of LWD Drilling Run 03

Weatherford International provided 4 3/4 in. Directional, Resistivity, Azimuthal Gamma Ray, and Temperature for Run 03.

Run 03 started formation drilling April 27, 2013 at 2:09 at 7808 MD / 7397 TVD. Weatherford International logged the 6.125 in. borehole.

The WBM at the start of drilling was 9.80 ppg.

Comment No. 3-2

End of LWD Drilling Run 03

Run 03 ended drilling formation April 27, 2013 at 3:07 at 7905 MD / 7398 TVD.

The WBM at the end of drilling was 9.80 ppg.

Comment No. 4-1

RECORDED DATA LOG

Start of LWD Drilling Run 04

Weatherford International provided 4 3/4 in. Directional, Resistivity, Azimuthal Gamma Ray, and Temperature for Run 04.

Run 04 started formation drilling April 28, 2013 at 20:49 at 7905 MD / 7398 TVD. Weatherford International logged the 6.125 in. borehole.

The WBM at the start of drilling was 9.80 ppg.

Comment No. 4-2

End of LWD Drilling Run 04

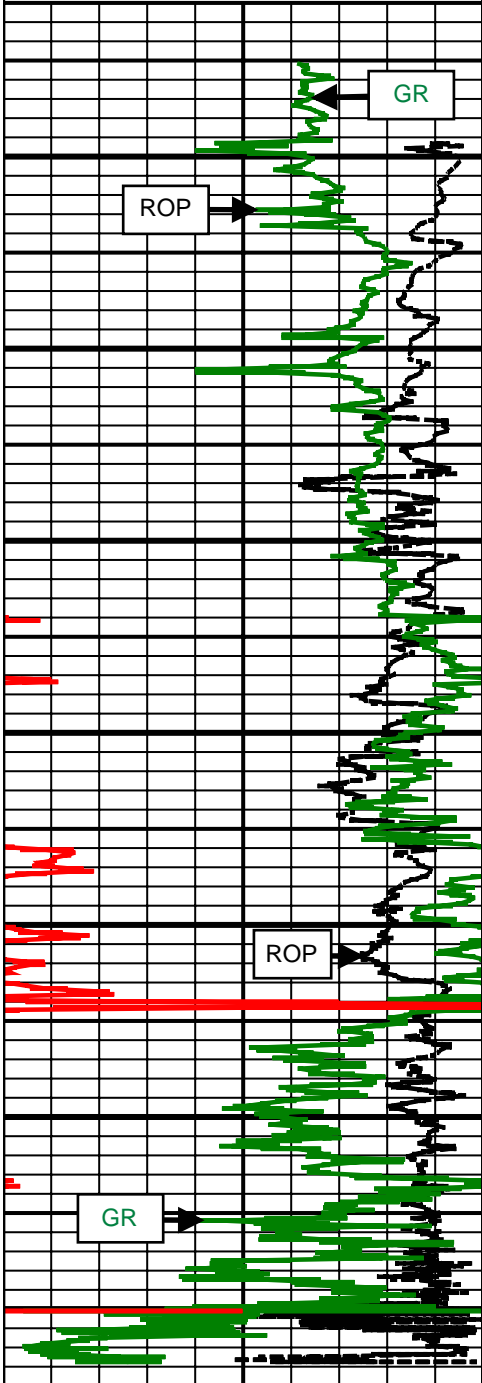
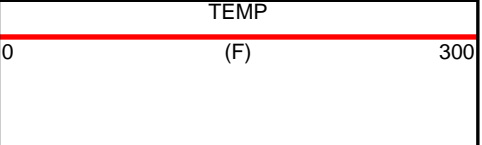
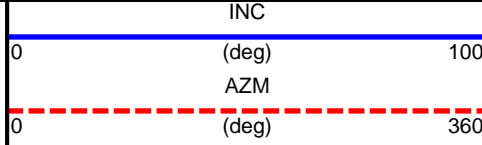
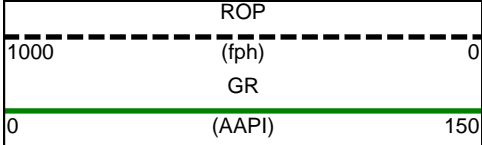
Run 04 ended drilling formation May 1, 2013 at 20:06 at 12001 MD / 7426 TVD.

The WBM at the end of drilling was 9.80 ppg.

CURVE SPECIFICATIONS

CURVE TYPE	MNEMONIC	UNITS	COMMENTS	CORRECTIONS
Rate of Penetration	ROP	fph	Rate of Penetration 3.0 ft window 0.5 ft Exponential Smoothing	None
Gamma Ray	GR	AAPI	Gamma Ray 3.0 ft window 0.5 ft Exponential Smoothing	See M/LWD Run Remarks
Inclination	INC	deg	Survey Inclination No Smoothing	None
Azimuth	AZM	deg	Survey Azimuth No Smoothing	
Temperature	TEMP	F	Borehole Temperature 3.0 ft window 0.5 ft Exponential Smoothing	

1 Inch - True Vertical Depth



6800 TVD

6900 TVD

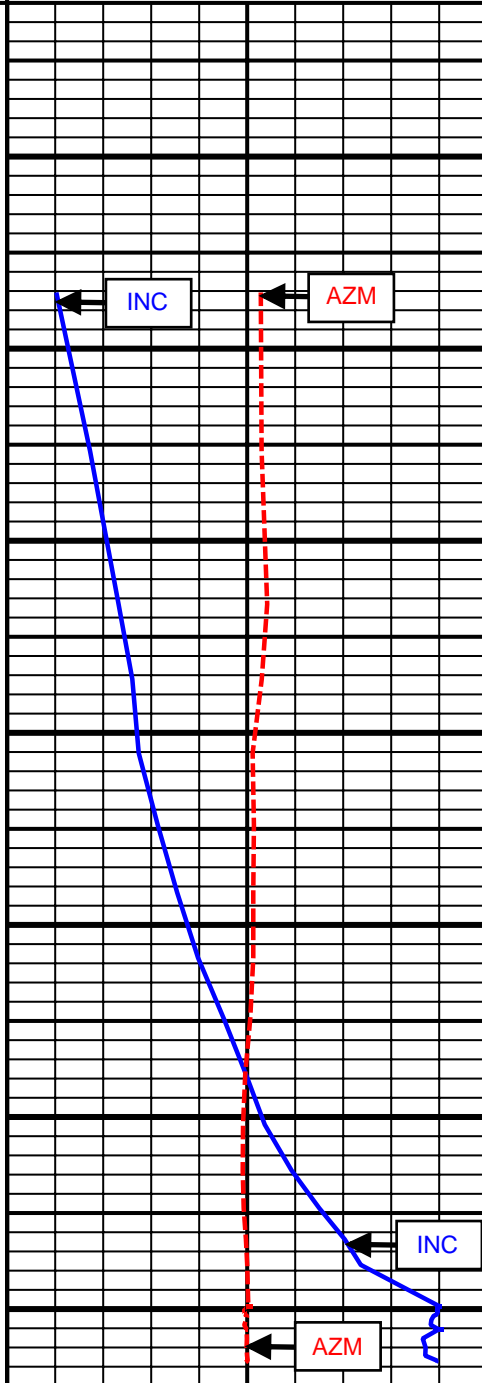
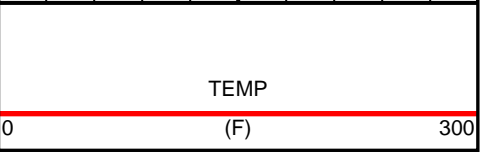
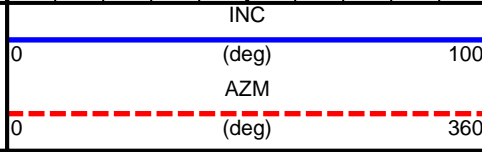
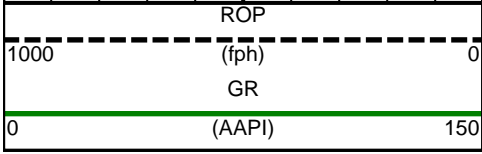
7000 TVD

7100 TVD

7200 TVD

7300 TVD

7400 TVD



TEMP

INC

AZM

INC

AZM

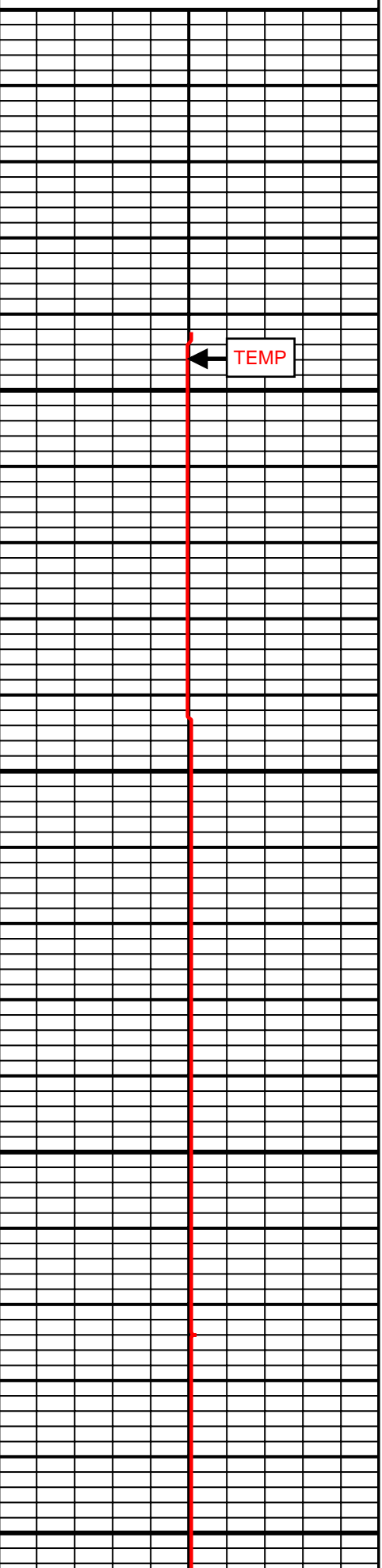
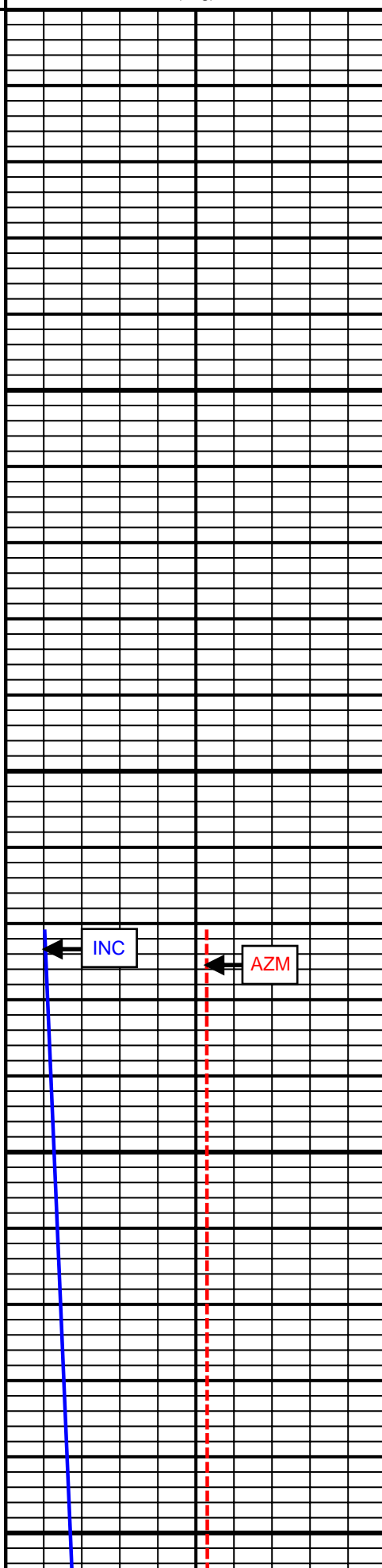
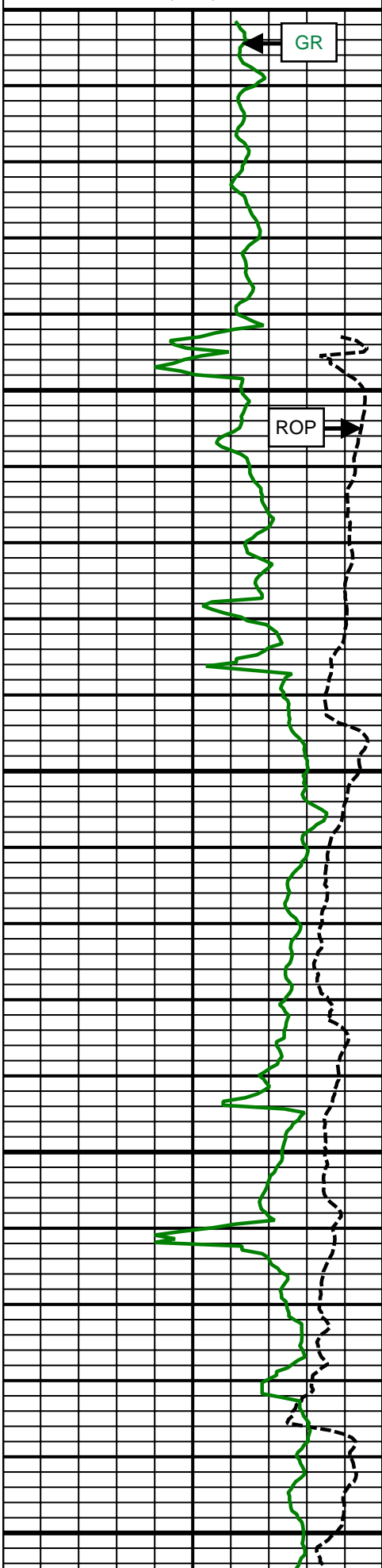
TEMP

5 Inch - True Vertical Depth

ROP (fph) 1000 0
GR (AAPI) 0 150

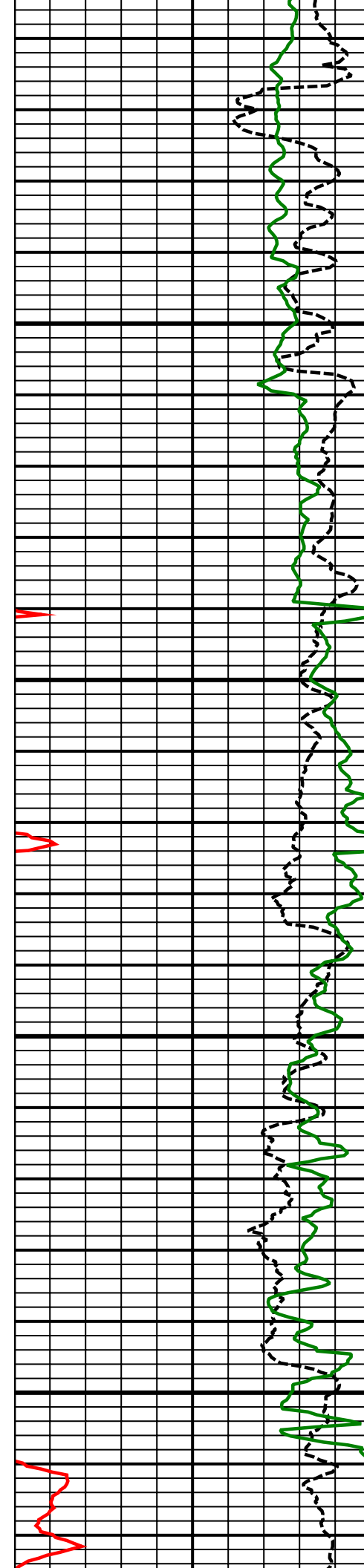
INC (deg) 0 100
AZM (deg) 0 360

TEMP (F) 0 300



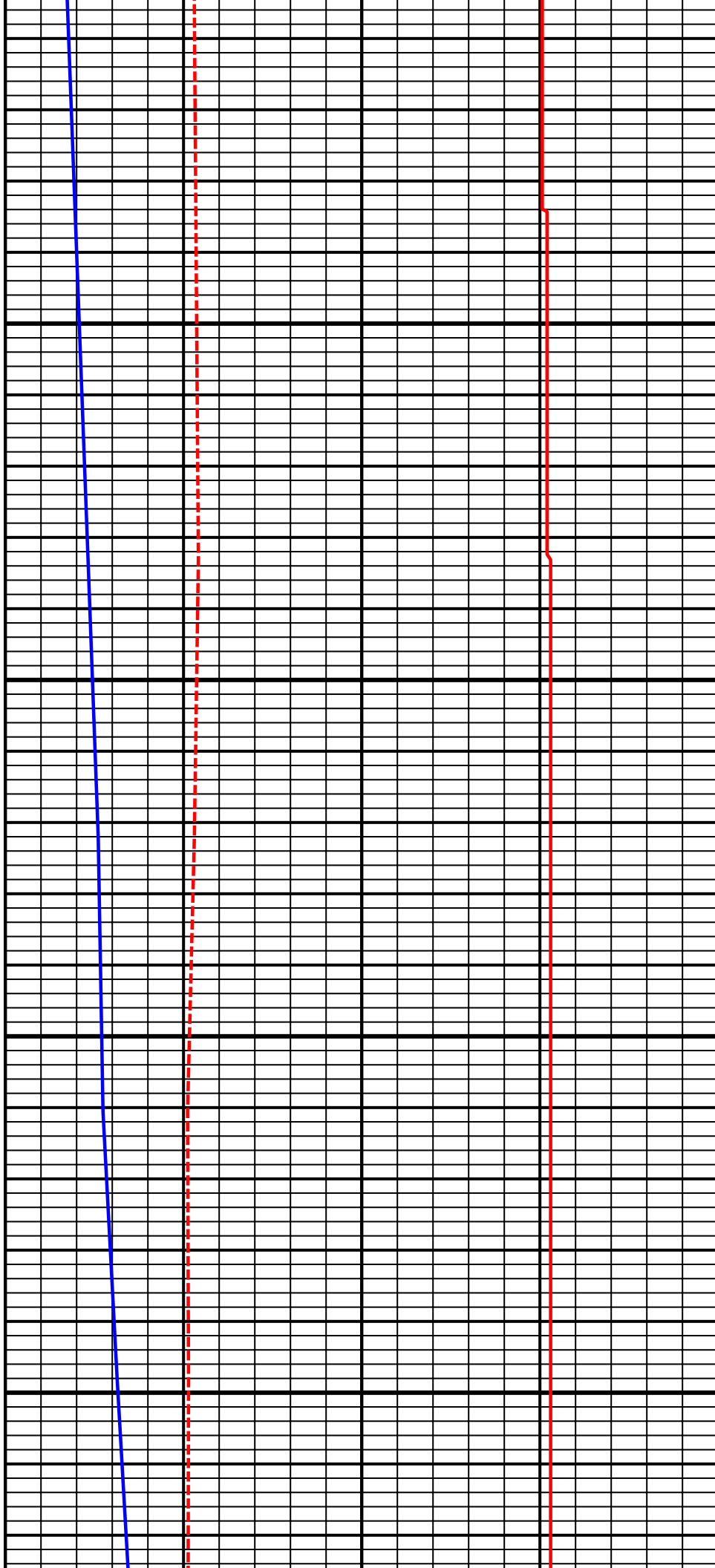
6800 TVD

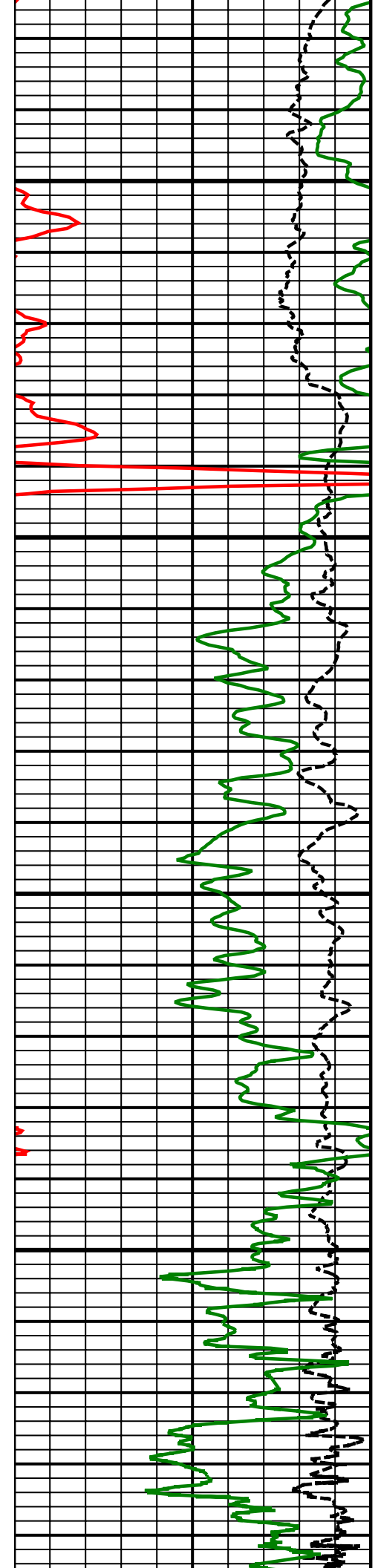
6900 TVD



7000
TVD

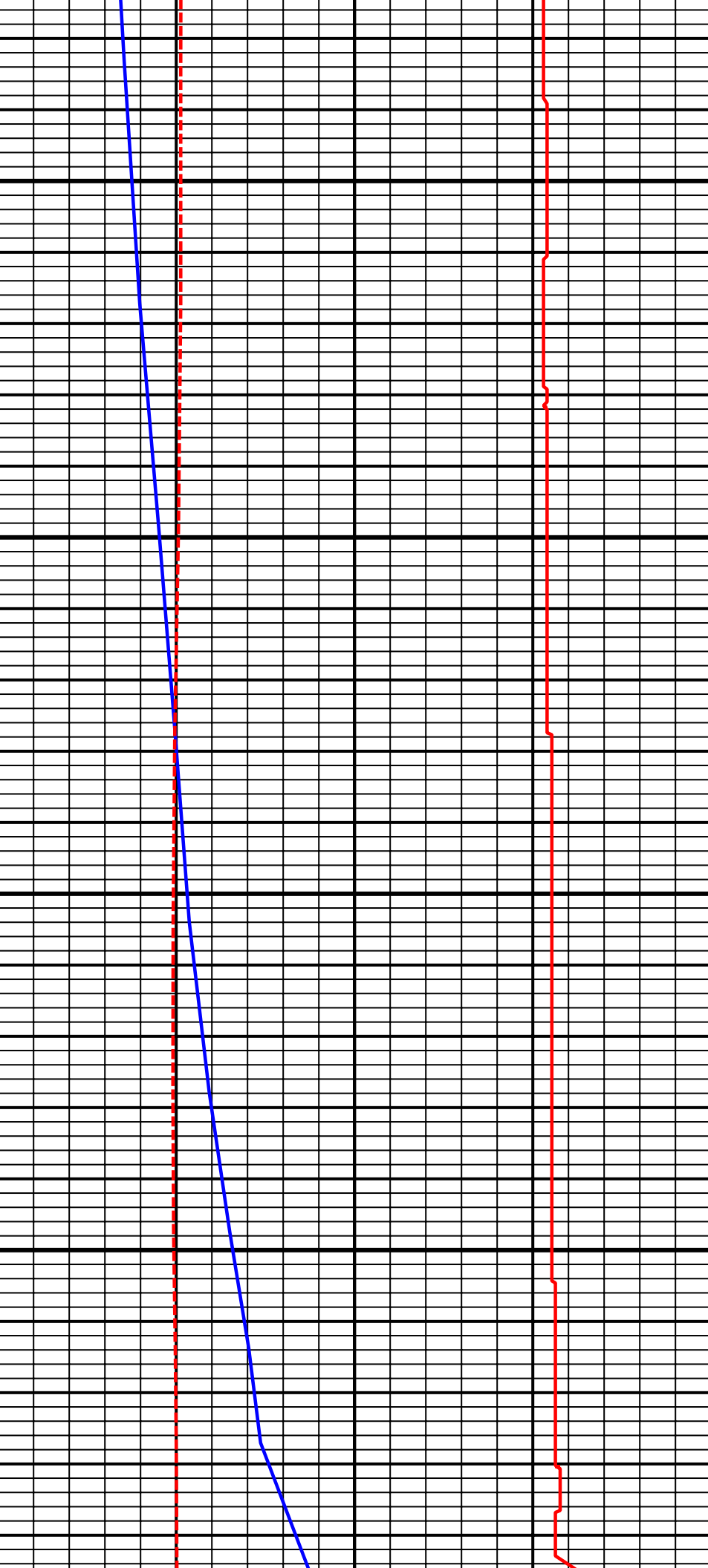
7100
TVD

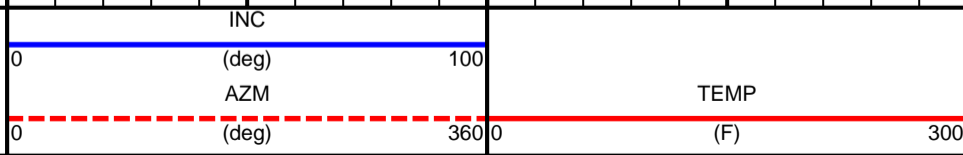
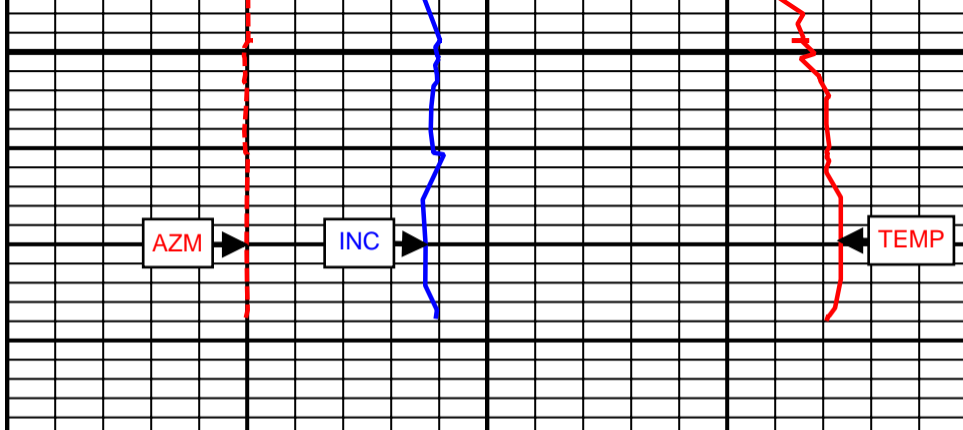
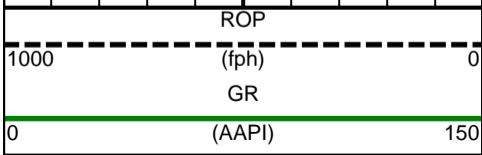
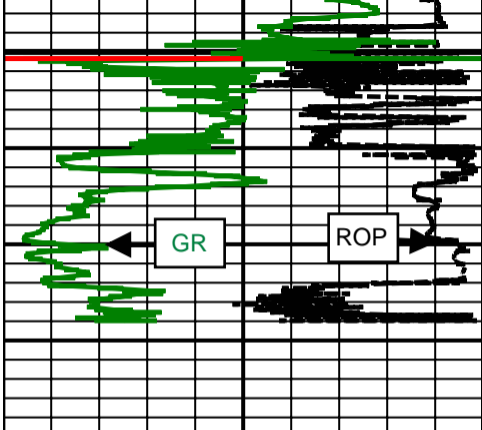




7200
TVD

7300
TVD





SURVEY

Survey Calculation Method: **Minimum Curvature**

Magnetic Reference	Target Direction	Total Magnetic Field	Magnetic Dip Angle	Magnetic Declination	Grid Convergence	Total Correction
True North	179.64 deg	52716 nT	66.77 deg	8.65 deg	0.00 deg	8.65 deg
Survey Tie-On	Depth	INC	AZ	TVD	NS	EW
	896.00 ft	0.23 deg	357.05 deg	895.99 ft	-0.25 ft	-1.96 ft

Depth (ft)	Inc (deg)	Azm (deg)	TVD (ft)	Well Head		VSect (ft)	Dogleg (deg/100ft)
				NS (ft)	EW (ft)		
1004.00	0.41	288.45	1003.99	0.09	-2.34	-0.10	0.36
1066.00	0.70	290.18	1065.99	0.29	-2.90	-0.31	0.47
1158.00	2.83	300.60	1157.94	1.64	-5.39	-1.67	2.33
1248.00	4.52	293.07	1247.75	4.16	-10.56	-4.23	1.95
1339.00	6.17	287.57	1338.35	7.04	-18.52	-7.16	1.90
1429.00	8.13	287.42	1427.65	10.41	-29.21	-10.59	2.18
1526.00	9.45	285.79	1523.51	14.63	-43.41	-14.90	1.38
1619.00	11.05	285.72	1615.02	19.12	-59.34	-19.49	1.72
1713.00	11.13	279.92	1707.27	23.12	-76.95	-23.61	1.19
1805.00	11.17	279.52	1797.53	26.13	-94.49	-26.72	0.09
1899.00	11.69	282.75	1889.67	29.74	-112.75	-30.44	0.88
1991.00	13.02	284.51	1979.53	34.39	-131.88	-35.22	1.50
2085.00	13.66	284.12	2071.00	39.75	-152.89	-40.71	0.69
2177.00	12.05	283.27	2160.69	44.60	-172.78	-45.69	1.76
2271.00	11.42	283.57	2252.72	49.04	-191.37	-50.24	0.67
2363.00	11.60	290.48	2342.88	54.41	-208.89	-55.73	1.51
2455.00	12.64	292.13	2432.83	61.44	-226.88	-62.87	1.19
2548.00	13.39	286.32	2523.44	68.30	-246.64	-69.85	1.62
2641.00	13.24	285.89	2613.94	74.24	-267.22	-75.92	0.19
2734.00	13.22	283.55	2704.47	79.65	-287.80	-81.46	0.58
2826.00	13.65	280.89	2793.95	84.17	-308.69	-86.10	0.82
2912.00	13.77	282.37	2877.50	88.28	-328.65	-90.34	0.43
2997.00	12.57	281.95	2960.27	92.36	-347.58	-94.54	1.42
3082.00	12.10	288.09	3043.31	97.04	-365.10	-99.33	1.64
3168.00	13.77	287.08	3127.12	102.85	-383.45	-105.25	1.96
3253.00	11.49	285.59	3210.06	108.09	-401.28	-110.61	2.71
3339.00	11.52	289.98	3294.34	113.33	-417.60	-115.95	1.02
3424.00	12.27	290.41	3377.51	119.38	-434.04	-122.10	0.89
3510.00	13.66	293.22	3461.32	126.57	-451.94	-129.41	1.77
3595.00	13.76	287.81	3543.90	133.62	-470.79	-136.58	1.51
3681.00	13.94	290.67	3627.40	140.40	-490.22	-143.48	0.82
3766.00	14.43	292.05	3709.81	147.99	-509.62	-151.19	0.70
3851.00	14.35	285.26	3792.15	154.74	-529.60	-158.07	1.99
3937.00	14.43	284.66	3875.45	160.26	-550.25	-163.71	0.20
4022.00	15.12	281.78	3957.64	165.20	-571.34	-168.79	1.19
4108.00	14.36	284.41	4040.81	170.15	-592.65	-173.87	1.18
4193.00	15.96	283.59	4122.85	175.52	-614.22	-179.37	1.90
4279.00	17.67	282.65	4205.17	181.15	-638.45	-185.16	2.01
4364.00	14.66	276.32	4286.80	185.16	-661.74	-189.32	4.10
4450.00	13.38	278.36	4370.24	187.81	-682.40	-192.09	1.60
4535.00	12.90	285.59	4453.02	191.79	-701.27	-196.19	2.01
4620.00	13.47	288.43	4535.78	197.47	-719.80	-201.99	1.01

4705.00	14.05	287.76	4618.34	203.75	-739.02	-208.39	0.71
4791.00	15.61	284.45	4701.47	209.82	-760.17	-214.59	2.06
4876.00	16.72	282.53	4783.11	215.33	-783.18	-220.24	1.45
4961.00	15.36	280.39	4864.80	220.01	-806.19	-225.07	1.74
5047.00	14.27	280.93	4947.94	224.07	-827.80	-229.27	1.28
5132.00	13.32	285.78	5030.49	228.72	-847.51	-234.04	1.76
5217.00	14.81	288.40	5112.94	234.81	-867.24	-240.26	1.91
5303.00	15.01	286.38	5196.05	241.42	-888.36	-247.00	0.65
5388.00	15.03	283.00	5278.15	247.01	-909.66	-252.72	1.03
5474.00	14.74	280.94	5361.26	251.59	-931.26	-257.44	0.70
5559.00	14.89	281.22	5443.43	255.77	-952.59	-261.75	0.20
5645.00	15.49	282.81	5526.43	260.47	-974.63	-266.58	0.85
5730.00	12.42	281.04	5608.91	264.73	-994.67	-270.98	3.65
5816.00	11.93	281.74	5692.98	268.31	-1012.45	-274.67	0.60
5901.00	12.14	282.13	5776.11	271.98	-1029.79	-278.44	0.26
5986.00	10.59	284.36	5859.44	275.79	-1046.10	-282.36	1.90
6071.00	10.38	286.68	5943.02	279.93	-1061.00	-286.59	0.55
6157.00	9.10	291.04	6027.78	284.60	-1074.77	-291.34	1.72
6242.00	6.87	283.87	6111.95	288.23	-1085.98	-295.05	2.87
6328.00	6.61	284.10	6197.36	290.67	-1095.78	-297.55	0.30
6413.00	4.91	279.33	6281.93	292.45	-1104.11	-299.38	2.08
6499.00	3.36	269.34	6367.70	293.02	-1110.26	-299.99	1.98
6584.00	1.83	263.05	6452.61	292.82	-1114.10	-299.82	1.83
6669.00	1.39	263.60	6537.58	292.54	-1116.47	-299.55	0.52
6754.00	0.97	263.00	6622.56	292.34	-1118.21	-299.36	0.49
6865.00	0.45	163.04	6733.55	291.81	-1119.02	-298.84	1.02
7003.00	10.22	190.10	6870.79	279.21	-1121.01	-286.25	7.12
7088.00	17.26	190.80	6953.31	259.37	-1124.70	-266.43	8.28
7173.00	23.17	194.95	7033.04	230.80	-1131.38	-237.91	7.15
7216.00	26.06	190.86	7072.13	213.35	-1135.35	-220.48	7.80
7259.00	27.39	184.08	7110.55	194.20	-1137.83	-201.35	7.73
7302.00	31.36	185.03	7148.01	173.18	-1139.52	-180.34	9.30
7344.00	35.39	184.50	7183.08	150.16	-1141.43	-157.33	9.62
7387.00	39.74	184.45	7217.15	124.03	-1143.47	-131.21	10.12
7430.00	45.13	182.23	7248.88	95.08	-1145.13	-102.27	13.01
7472.00	49.65	178.51	7277.31	64.19	-1145.30	-71.38	12.58
7515.00	53.64	176.82	7303.99	30.50	-1143.91	-37.69	9.78
7558.00	59.21	176.58	7327.76	-5.25	-1141.85	-1.93	12.96
7600.00	64.98	177.27	7347.41	-42.30	-1139.86	35.13	13.81
7643.00	70.33	178.95	7363.75	-82.03	-1138.56	74.87	12.96
7686.00	73.65	179.96	7377.05	-122.91	-1138.18	115.76	8.04
7748.00	80.88	182.40	7390.71	-183.33	-1139.44	176.17	12.28
7840.00	89.26	184.20	7398.61	-274.75	-1144.72	267.55	9.31
7925.00	90.55	184.20	7398.75	-359.52	-1150.94	352.28	1.52
8010.00	91.91	181.85	7396.92	-444.38	-1155.43	437.11	3.19
8095.00	92.22	179.46	7393.86	-529.31	-1156.40	522.03	2.83
8181.00	91.17	178.21	7391.32	-615.25	-1154.65	607.98	1.90
8266.00	90.00	177.45	7390.45	-700.18	-1151.43	692.93	1.64
8351.00	90.06	176.50	7390.40	-785.06	-1146.95	777.84	1.12
8437.00	90.06	177.13	7390.31	-870.93	-1142.17	863.74	0.73
8522.00	88.95	176.02	7391.05	-955.77	-1137.09	948.61	1.85
8607.00	89.75	176.63	7392.01	-1040.59	-1131.64	1033.46	1.18
8693.00	89.44	177.42	7392.62	-1126.47	-1127.18	1119.37	0.99
8779.00	89.26	178.18	7393.60	-1212.40	-1123.88	1205.32	0.91
8864.00	88.68	176.84	7395.12	-1297.31	-1120.19	1290.24	1.72
8950.00	88.34	177.72	7397.36	-1383.18	-1116.11	1376.14	1.10
9035.00	89.82	179.26	7398.73	-1468.13	-1113.87	1461.11	2.51
9121.00	90.06	179.05	7398.82	-1554.13	-1112.60	1547.10	0.37
9206.00	89.91	178.95	7398.84	-1639.11	-1111.12	1632.10	0.21
9291.00	89.20	177.95	7399.50	-1724.08	-1108.82	1717.08	1.44
9376.00	89.57	177.49	7400.41	-1809.00	-1105.44	1802.02	0.69

9462.00	90.12	178.03	7400.64	-1894.94	-1102.08	1887.98	0.90
9547.00	89.88	178.03	7400.64	-1979.89	-1099.15	1972.94	0.28
9632.00	89.14	178.19	7401.37	-2064.84	-1096.35	2057.91	0.89
9718.00	89.51	178.53	7402.38	-2150.80	-1093.89	2143.88	0.58
9803.00	89.57	177.59	7403.07	-2235.74	-1091.01	2228.84	1.11
9889.00	90.68	176.67	7402.88	-2321.63	-1086.71	2314.76	1.68
9974.00	91.11	176.63	7401.55	-2406.48	-1081.74	2399.63	0.51
10059.00	90.18	175.23	7400.59	-2491.25	-1075.71	2484.45	1.98
10144.00	89.32	177.64	7400.96	-2576.08	-1070.42	2569.31	3.01
10230.00	90.12	177.39	7401.38	-2662.00	-1066.69	2655.24	0.97
10315.00	90.25	179.09	7401.11	-2746.96	-1064.08	2740.22	2.01
10401.00	90.43	180.47	7400.60	-2832.95	-1063.75	2826.21	1.62
10486.00	90.12	180.57	7400.19	-2917.95	-1064.52	2911.20	0.38
10571.00	89.26	181.79	7400.65	-3002.93	-1066.28	2996.17	1.76
10657.00	90.18	184.01	7401.07	-3088.81	-1070.63	3082.02	2.79
10742.00	89.63	184.69	7401.21	-3173.56	-1077.07	3166.73	1.03
10828.00	89.81	183.16	7401.63	-3259.36	-1082.96	3252.49	1.79
10913.00	89.38	181.59	7402.23	-3344.28	-1086.48	3337.39	1.92
10998.00	88.83	179.88	7403.56	-3429.26	-1087.57	3422.36	2.11
11084.00	88.34	179.11	7405.69	-3515.23	-1086.81	3508.33	1.06
11169.00	88.21	177.76	7408.24	-3600.15	-1084.49	3593.27	1.59
11254.00	88.77	178.67	7410.48	-3685.08	-1081.85	3678.21	1.26
11340.00	90.99	180.37	7410.66	-3771.07	-1081.13	3764.20	3.25
11425.00	88.09	179.09	7411.35	-3856.06	-1080.73	3849.19	3.73
11511.00	86.55	179.72	7415.37	-3941.95	-1079.83	3935.09	1.93
11596.00	87.16	179.51	7420.03	-4026.82	-1079.26	4019.96	0.76
11681.00	87.10	179.88	7424.29	-4111.72	-1078.81	4104.86	0.44
11767.00	89.51	180.28	7426.83	-4197.67	-1078.93	4190.81	2.84
11853.00	89.26	178.78	7427.75	-4283.66	-1078.23	4276.80	1.77
11938.00	90.80	179.76	7427.71	-4368.65	-1077.14	4361.80	2.15
11947.00	90.99	179.77	7427.57	-4377.65	-1077.11	4370.80	2.11
12001.00	90.99	179.77	7426.64	-4431.64	-1076.89	4424.79	0.00

Weatherford Surveys from 1004 ft MD to 11947 ft MD.

TD at 12001 ft MD.

The total correction is 8.65 deg relative to True North.



Weatherford®

Final Print

COMPANY	<u>Anadarko Petroleum</u>		
WELL	<u>Cannon 34C-10HZ</u>		
FIELD	<u>Wattenberg</u>		
RIG	<u>Xtreme 23</u>		
LOC.	<u>Colorado</u>	COUNTY	<u>Weld</u>