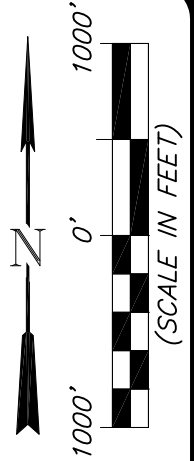
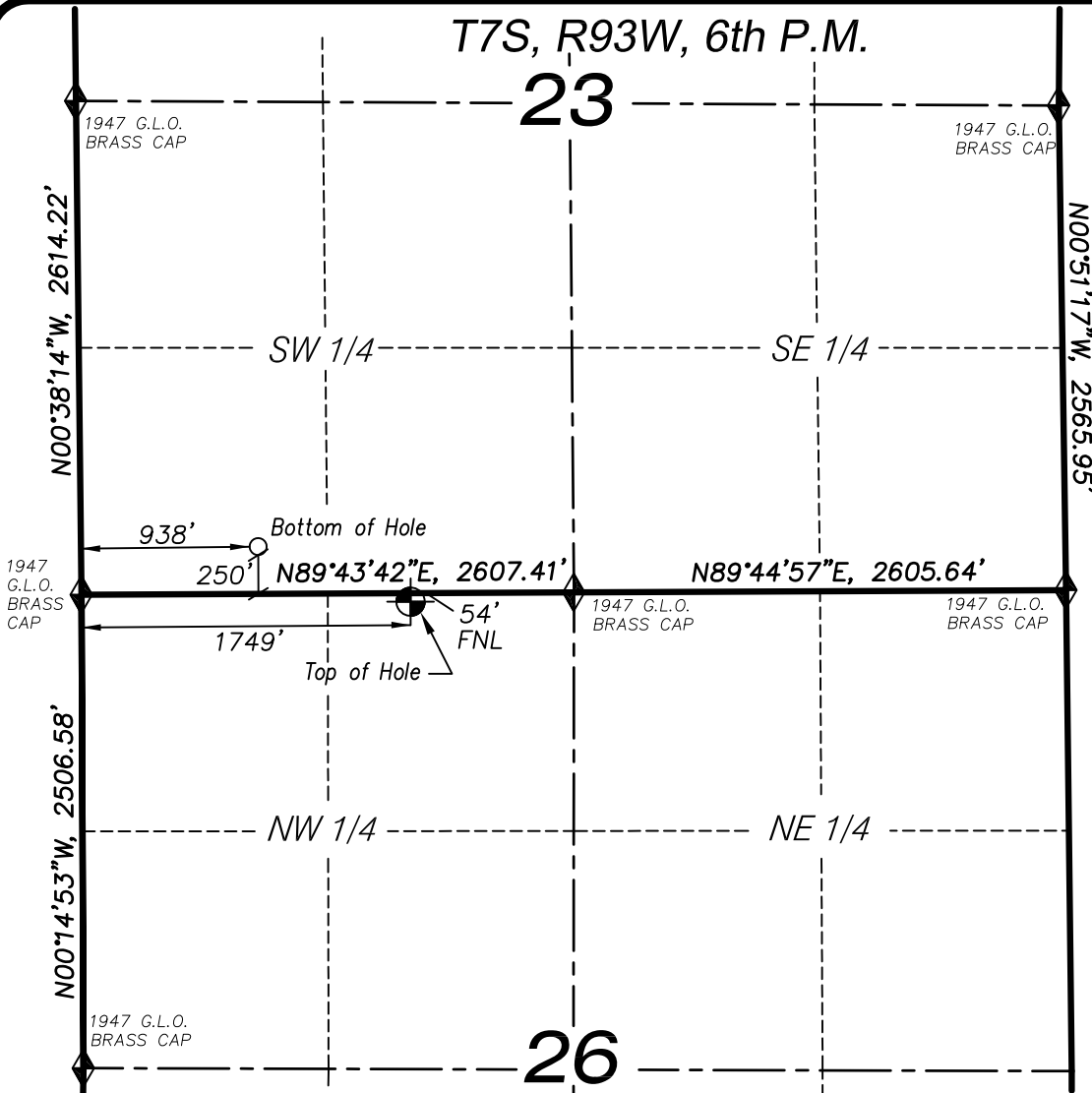


T7S, R93W, 6th P.M.

23



LEGEND

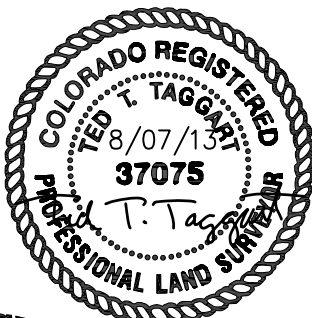
- ◆ SECTION CORNER LOCATED
- SURFACE LOCATION
- BOTTOM HOLE LOCATION
- RECORD LOCATION OF CORNER

MCU Federal 23-13DD (C26W) Well

(WELLHEAD LOCATION) NAD 83
 LATITUDE = 39.424047° N
 LONGITUDE = 107.744915° W
 (BOTTOM HOLE LOCATION) NAD 83
 LATITUDE = 39.424871° N
 LONGITUDE = 107.747797° W
 ELEV. UNGRADED GROUND= 7065'

CERTIFICATE OF SURVEYOR

I, TED TAGGART OF FRUITA, COLORADO HEREBY CERTIFY THAT THIS MAP WAS MADE FROM NOTES TAKEN DURING AN ACTUAL SURVEY MADE BY ME OR UNDER MY DIRECTION FOR ENCANA OIL & GAS (USA) INC. AND THAT THIS LOCATION HAS BEEN STAKED ON THE GROUND AS SHOWN HEREON.



NOTES

1. WELL FOOTAGES ARE MEASURED AT RIGHT ANGLES TO SECTION LINES.
2. BASIS OF BEARING: GEODETIC- BASED ON GPS OBSERVATIONS.
3. ELEVATIONS BASED ON GPS OBSERVATIONS, NAVD 88 (GEOID 03), POST PROCESSED USING NGS OPUS.
4. THE BOTTOM HOLE BEARS N69°45'04"W, 868' FROM TOP OF HOLE.
5. SEE ADDENDUM TO LEGAL PLAT (SHEET 1r) FOR VISIBLE IMPROVEMENTS WITHIN 500 FEET OF THE PROPOSED OIL & GAS LOCATION.
6. GPS PROCEDURES COMPLY WITH COGCC RULE NO. 215. PDOP READING: 1.7 GPS OPERATOR: BRIAN TAGGART

MAP to ACCOMPANY
 APPLICATION for PERMIT to DRILL
 Encana Oil & Gas (USA) Inc.
MCU Federal 23-13DD (C26W) Well

NE1/4 NW1/4, SECTION 26
 T7S, R93W, 6th P.M.
 GARFIELD COUNTY, COLORADO

Location Plat		Scale: 1" = 1000'	SHEET 1h OF 10
Project No.	12-04-23	Date Surveyed: 7/03/12	
Date Drawn:	7/03/12	Latest Revision Date: 8/07/13	



906 Main Street
 Evanston, Wyoming 82930
 Phone No. (307) 789-4545