



NIGHTHAWK PRODUCTION LLC

Silverton 16-10
SE SE Sec 10, T6S, R54W
LINCOLN COUNTY, COLORADO
API No. 05-73-06528-00

ELEVATION

R.B. 5242'

G.L. 5227'

KB 15'

BHT 220°

BHP

Spud date: 05/24/13

Completion

Lat: 39.53900

Long: 103.42007

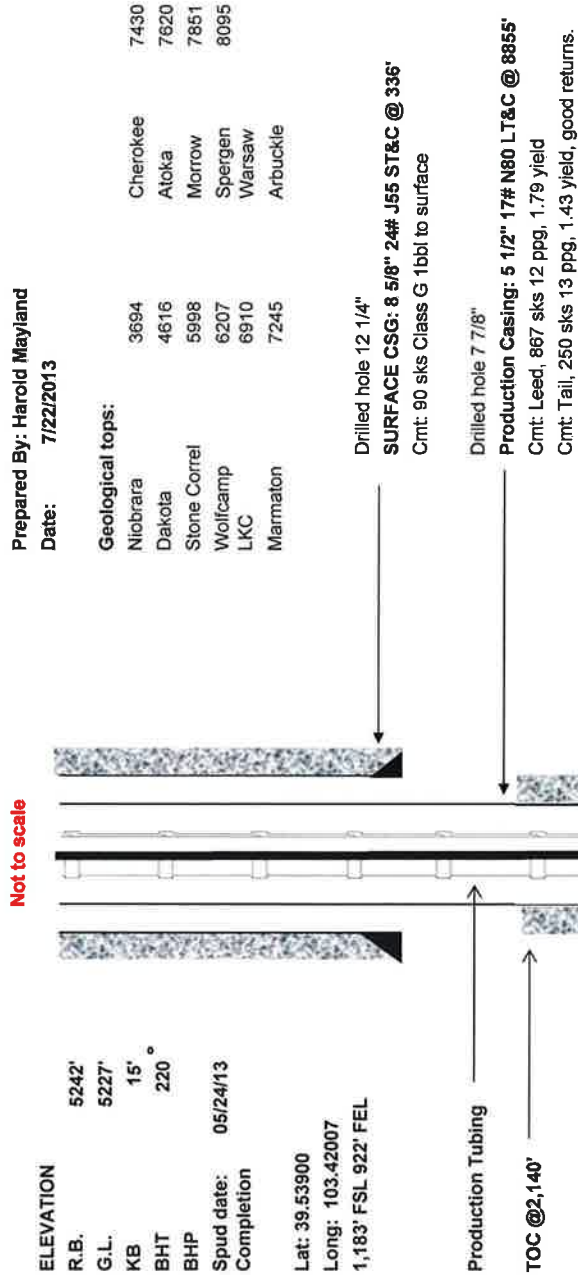
1,183' FSL 922' FEL

Geological tops:

Niobrara	3694	Cherokee	7430
Dakota	4616	Atoka	7620
Stone Correl	5998	Morrow	7851
Wolfcamp	6207	Spergen	8095
LKC	6910	Warsaw	
Marmaton	7245	Arbuckle	

Prepared By: Harold Mayland

Date: 7/22/2013



5 1/2" 17# J55		2 7/8" J55 EU 8RD		2 7/8" X 5 1/2"	
I.D.	4.892	I.D.	2.441		
Drift	4.767	Drift	2.347		
Burst		Burst	7.260		
Lin fubbl	43.01	Lin fubbl	172.7500	Lin fubbl	65.71
BBL/linft	0.0232	BBL/linft	0.00579	BBL/linft	0.0152

Tubing	Qty	Length	Depth in hole
Avg Jt length			
KB difference		14.00	14.00
Streach		2.40	16.40
2 7/8" EU 8RD J55 tbg	244	7,724.60	7,741.00
TAC		2.87	7,743.87
2 7/8" EU 8RD J55 tbg	7	225.97	7,969.84
Seating Nipple		1.10	7,970.94
Preforated Sub 2 7/8" x 3'	2	6.10	7,977.04
2 7/8" x 6' pup jt		6.00	7,983.04
Mud Anchor (orange peeled)		16.00	7,999.04
Total Joints	253		
Rods			
Polish rod 1 1/2" x 30'	1		
Pony rod 6' x 1"	2		
Pony rod 8' x 1"	1		
Pony rod 2' x 1"	1		
7/8" rods S88	118		
3/4" rods MMS	36		
3/4" rods EL	152		
1" Pony	1		
1 1/2" x 25' K-bar	10		
2 1/2" x 2" x 16' x 24' RWBC	1		

NOTE:

06/19/13 Perf 8256-64', swab wtr.

06/20/13 Set CIBP @8240', Perf 8162-70', swab 15% oil

06/21/13 Set CIBP @8154', perf 8132-42', swab 20% oil

06/25/13 Set WRBP @8128, Perf 8096-8120'

