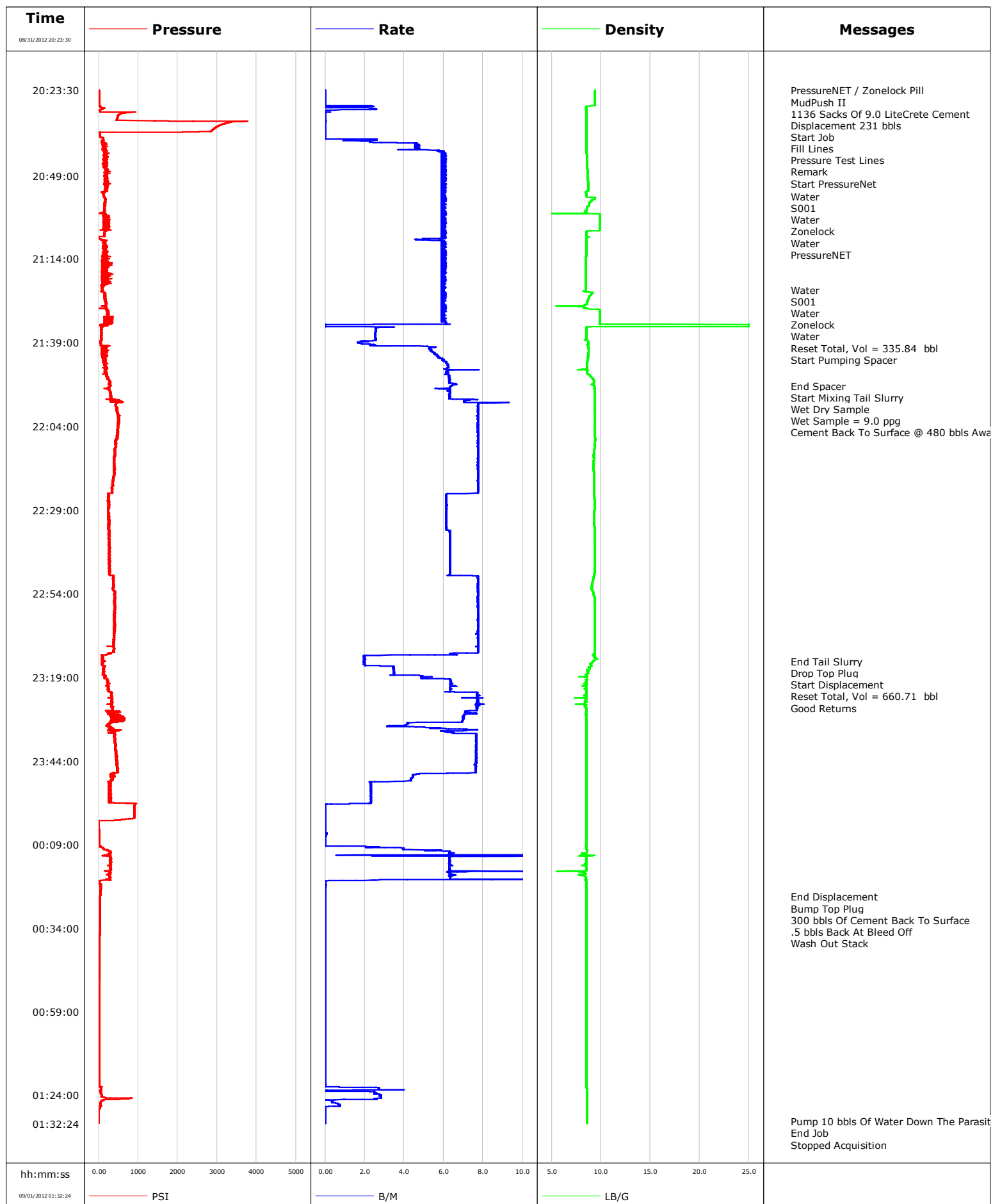


Well SG 8502B-35 D36 496
Field Story Gulch
Engineer Rogers / Hansen
Country United States

Client Encana
SIR No. C610-00559
Job Type Surface
Job Date 08-31-2012

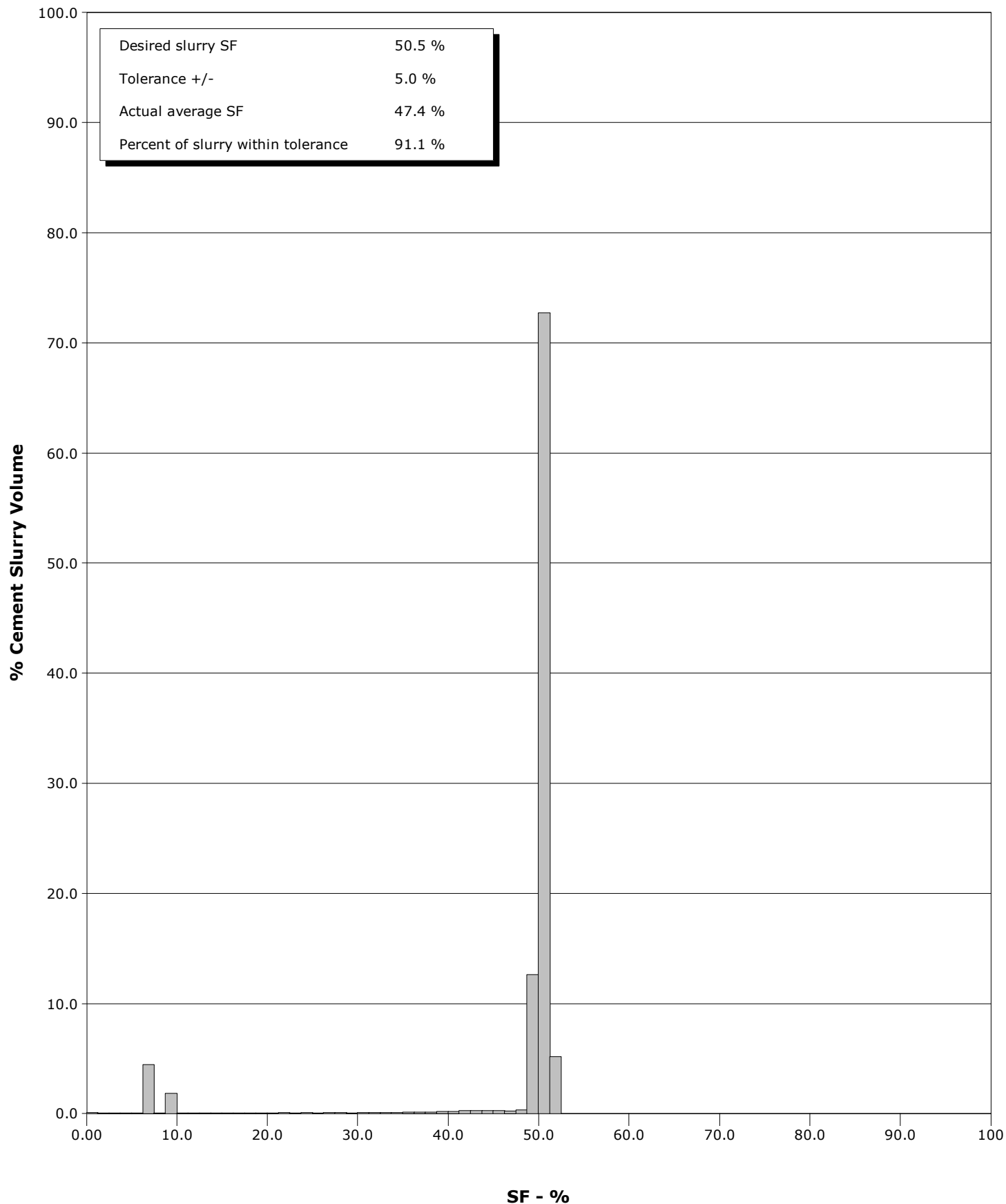


Schlumberger Cementing Qa/Qc SFM Report

Well SG 8502B-35 D36 496
Field Story Gulch
Engineer Rogers / Hansen
Country United States

Client Encana
SIR No. C610-00559
Job Type Surface
Job Date 08-31-2012

Cement Slurry - 08/31/2012 21:43:51 to 08/31/2012 22:43:33





Cementing Service Report

				Customer Encana		Job Number C610-00559			
Well SG 8502B-35 D36 496			Location (legal)		Schlumberger Location		Job Start Aug/31/2012		
Field Story Gulch		Formation Name/Type Dirty-Sandstone		Deviation	Bit Size		Well MD		Well TVD
County Garfield		State/Province Colorado		BHP	BHST		BHCT		Pore Press. Gradient
Well Master		API/UWI 0504520925							
Rig Name	Drilled For		Service Via	Casing/Liner					
				Depth, ft	Size, in	Weight, lb/ft	Grade	Thread	
Offshore Zone	Well Class		Well Type	3038.0	9.630	36.0	K55	8RD	
				0.0	0.000	0.0			
Drilling Fluid Type		Max. Density	Plastic Viscosity	Tubing/Drill Pipe					
				Depth,	Size,	Weight,	Grade	Thread	
Service Line Cementing	Job Type								
Max. Allowed Tub. Press	Max. Allowed Ann. Press		WH Connection Single Cement head	Perforations/Open Hole					
				Top,	Bottom,		No. of Shots	Total Interval	
Service Instructions									
Treat Down		Displacement		Packer Type		Packer Depth			
Tubing Vol.		Casing Vol.		Annular Vol.		Openhole Vol.			
Casing/Tubing Secured <input type="checkbox"/>		1 Hole Vol. Circulated prior to Cement <input type="checkbox"/>		Casing Tools			Squeeze Job		
Lift Pressure				Shoe Type			Squeeze Type		
Pipe Rotated <input type="checkbox"/>		Pipe Reciprocated <input type="checkbox"/>		Shoe Depth			Tool Type		
No. Centralizers		Top Plugs	Bottom Plugs	Stage Tool Type			Tool Depth		
Cement Head Type				Stage Tool Depth			Tail Pipe Size		
Job Scheduled For Aug/31/2012		Arrived on Location Aug/31/2012		Leave Location Aug/31/2012		Collar Type		Tail Pipe Depth	
						Collar Depth		Sqz. Total Vol.	
Date	Time 24-hr clock	Treating Pressure PSI	Flow Rate B/M	Density LB/G	Volume BBL	Message			
08/31/2012	18:39:38					Started Acquisition			
08/31/2012	20:23:30	5	0.0	9.38	0.0				
08/31/2012	20:23:35					PressureNET / Zonelock Pill			
08/31/2012	20:23:35	5	0.0	9.38	0.0				
08/31/2012	20:23:36					MudPush II			
08/31/2012	20:23:36	5	0.0	9.38	0.0				
08/31/2012	20:23:37					1136 Sacks Of 9.0 LiteCrete Cement			
08/31/2012	20:23:37	4	0.0	9.38	0.0				
08/31/2012	20:23:51					Displacement 231 bbls			
08/31/2012	20:23:51	5	0.0	9.38	0.0				
08/31/2012	20:24:16					Start Job			
08/31/2012	20:24:16	5	0.0	9.38	0.0				
08/31/2012	20:24:24					Fill Lines			
08/31/2012	20:24:24	5	0.0	9.38	0.0				
08/31/2012	20:24:25					Pressure Test Lines			
08/31/2012	20:24:25	5	0.0	9.38	0.0				
08/31/2012	20:24:27					Remark			
08/31/2012	20:24:27	5	0.0	9.38	0.0				
08/31/2012	20:24:38	5	0.0	9.38	0.0				
08/31/2012	20:29:38	29	0.0	8.50	2.1				
08/31/2012	20:34:38	2970	0.0	8.50	2.1				

Well			Field		Job Start	Customer	Job Number
SG 8502B-35 D36 496			Story Gulch		Aug/31/2012	Encana	C610-00559
Date	Time 24-hr clock	Treating Pressure PSI	Flow Rate B/M	Density LB/G	Volume BBL	Message	
08/31/2012	20:37:38	52	0.0	8.49	2.1		
08/31/2012	20:39:38	206	4.6	8.49	6.2		
08/31/2012	20:44:38	132	6.0	8.58	33.5		
08/31/2012	20:49:38	219	5.9	8.66	63.4		
08/31/2012	20:54:38	112	6.0	8.49	93.3		
08/31/2012	20:55:15					Water	
08/31/2012	20:55:15	134	5.9	8.49	97.0		
08/31/2012	20:55:30					S001	
08/31/2012	20:55:30	139	5.9	8.80	98.4		
08/31/2012	20:59:10					Water	
08/31/2012	20:59:10	144	5.9	8.56	120.4		
08/31/2012	20:59:38	139	6.0	8.47	123.1		
08/31/2012	21:02:42					Zonelock	
08/31/2012	21:02:42	122	5.9	9.87	141.5		
08/31/2012	21:04:38	203	5.9	9.87	153.0		
08/31/2012	21:05:31					Water	
08/31/2012	21:05:31	185	6.0	9.69	158.2		
08/31/2012	21:08:20					PressureNET	
08/31/2012	21:08:20	141	5.2	8.49	174.6		
08/31/2012	21:09:38	157	6.0	8.49	182.3		
08/31/2012	21:14:38	181	5.9	8.47	212.2		
08/31/2012	21:19:38	136	6.0	8.47	242.0		
08/31/2012	21:23:12					Water	
08/31/2012	21:23:12	91	6.0	8.47	263.3		
08/31/2012	21:23:54					S001	
08/31/2012	21:23:54	121	5.9	9.03	267.4		
08/31/2012	21:24:38	146	6.0	8.98	271.8		
08/31/2012	21:27:16					Water	
08/31/2012	21:27:16	175	5.9	8.60	287.5		
08/31/2012	21:28:44					Zonelock	
08/31/2012	21:28:44	186	5.9	8.47	296.2		
08/31/2012	21:29:38	212	6.0	9.87	301.6		
08/31/2012	21:33:49					Water	
08/31/2012	21:33:49	58	0.0	25.00	325.1		
08/31/2012	21:34:38	64	2.6	8.49	326.1		
08/31/2012	21:38:26					Reset Total, Vol = 335.84 bbl	
08/31/2012	21:38:26	61	2.5	8.65	335.8		
08/31/2012	21:38:31					Start Pumping Spacer	
08/31/2012	21:38:31	43	2.0	8.65	336.0		
08/31/2012	21:39:38	57	2.5	8.62	338.2		
08/31/2012	21:44:38	174	6.1	8.62	365.0		
08/31/2012	21:49:38	225	6.3	9.11	396.0		
08/31/2012	21:51:53					End Spacer	
08/31/2012	21:51:53	273	6.4	9.28	410.4		
08/31/2012	21:51:59					Start Mixing Tail Slurry	
08/31/2012	21:51:59	283	6.4	9.28	411.0		
08/31/2012	21:52:09					Wet Dry Sample	
08/31/2012	21:52:09	275	6.3	9.33	412.1		
08/31/2012	21:52:15					Wet Sample = 9.0 ppg	
08/31/2012	21:52:15	260	6.3	9.33	412.7		
08/31/2012	21:52:17					Cement Back To Surface @ 480 bbls Away	
08/31/2012	21:52:17	259	6.3	9.33	412.9		
08/31/2012	21:54:38	298	6.3	9.34	427.6		
08/31/2012	21:59:38	463	7.7	9.37	464.1		

Well			Field		Job Start	Customer	Job Number
SG 8502B-35 D36 496			Story Gulch		Aug/31/2012	Encana	C610-00559
Date	Time 24-hr clock	Treating Pressure PSI	Flow Rate B/M	Density LB/G	Volume BBL	Message	
08/31/2012	22:09:38	435	7.7	9.36	541.4		
08/31/2012	22:14:38	371	7.7	9.26	580.1		
08/31/2012	22:19:38	358	7.7	9.28	618.8		
08/31/2012	22:24:38	233	6.1	9.29	656.6		
08/31/2012	22:29:38	228	6.1	9.29	687.3		
08/31/2012	22:34:38	237	6.1	9.32	718.0		
08/31/2012	22:39:38	275	6.3	9.37	749.5		
08/31/2012	22:44:38	249	6.3	9.38	781.1		
08/31/2012	22:49:38	362	7.7	9.22	814.1		
08/31/2012	22:54:38	409	7.7	9.28	852.8		
08/31/2012	22:59:38	392	7.7	9.38	891.4		
08/31/2012	23:04:38	396	7.7	9.38	930.1		
08/31/2012	23:09:38	370	7.8	9.37	968.8		
08/31/2012	23:14:17					End Tail Slurry	
08/31/2012	23:14:17	128	2.0	9.20	993.1		
08/31/2012	23:14:20					Drop Top Plug	
08/31/2012	23:14:20	107	2.0	9.17	993.2		
08/31/2012	23:14:23					Start Displacement	
08/31/2012	23:14:23	106	2.0	9.15	993.3		
08/31/2012	23:14:38	80	2.0	9.11	993.8		
08/31/2012	23:15:51					Reset Total, Vol = 660.71 bbl	
08/31/2012	23:15:51	114	3.5	8.96	996.6		
08/31/2012	23:16:00					Good Returns	
08/31/2012	23:16:00	153	3.5	8.76	997.1		
08/31/2012	23:19:38	216	6.3	8.53	1011.6		
08/31/2012	23:24:38	323	7.7	8.50	1045.0		
08/31/2012	23:29:38	401	7.3	8.50	1083.2		
08/31/2012	23:34:38	401	7.6	8.50	1113.3		
08/31/2012	23:39:38	429	7.7	8.50	1150.5		
08/31/2012	23:44:38	474	7.7	8.50	1188.7		
08/31/2012	23:49:38	306	4.4	8.50	1220.8		
08/31/2012	23:54:38	294	2.3	8.50	1233.5		
08/31/2012	23:59:38	899	0.0	8.50	1238.6		
09/01/2012	00:04:38	7	0.0	8.50	1238.6		
09/01/2012	00:09:38	54	2.4	8.49	1238.8		
09/01/2012	00:14:38	285	6.3	8.50	1268.0		
09/01/2012	00:19:38	286	2.5	8.42	1300.1		
09/01/2012	00:24:33					End Displacement	
09/01/2012	00:24:33	36	0.0	8.50	1300.5		
09/01/2012	00:24:35					Bump Top Plug	
09/01/2012	00:24:35	36	0.0	8.50	1300.5		
09/01/2012	00:24:38	35	0.0	8.50	1300.5		
09/01/2012	00:24:39					300 bbls Of Cement Back To Surface	
09/01/2012	00:24:39					.5 bbls Back At Bleed Off	
09/01/2012	00:24:39	35	0.0	8.50	1300.5		
09/01/2012	00:26:03					Wash Out Stack	
09/01/2012	00:26:03	33	0.0	8.50	1300.5		
09/01/2012	00:29:38	28	0.0	8.50	1300.5		
09/01/2012	00:34:38	25	0.0	8.50	1300.5		
09/01/2012	00:39:38	23	0.0	8.50	1300.5		
09/01/2012	00:44:38	20	0.0	8.50	1300.5		
09/01/2012	00:49:38	10	0.0	8.50	1300.5		
09/01/2012	00:54:38	4	0.0	8.50	1300.5		
09/01/2012	00:59:38	4	0.0	8.50	1300.5		

Well			Field		Job Start	Customer	Job Number
SG 8502B-35 D36 496			Story Gulch		Aug/31/2012	Encana	C610-00559
Date	Time 24-hr clock	Treating Pressure PSI	Flow Rate B/M	Density LB/G	Volume BBL	Message	
09/01/2012	01:09:38	3	0.0	8.51	1300.5		
09/01/2012	01:14:38	3	0.0	8.51	1300.5		
09/01/2012	01:19:38	16	0.0	8.50	1300.5		
09/01/2012	01:24:38	130	2.8	8.58	1307.9		
09/01/2012	01:29:38	-4	0.0	8.58	1310.6		
09/01/2012	01:31:42					Pump 10 bbls Of Water Down The Parasite Line	
09/01/2012	01:31:42	-4	0.0	8.58	1310.6		
09/01/2012	01:32:18					End Job	
09/01/2012	01:32:18	-4	0.0	8.58	1310.6		

Post Job Summary

Average Pump Rates,					Volume of Fluid Injected,			
Slurry	N2	Mud	Maximum Rate		Total Slurry	Mud	Spacer	N2
Treating Pressure Summary,					Breakdown Fluid			
Maximum	Final	Average	Bump Plug to	Breakdown	Type	Volume		Density
Avg. N2 Percent		Designed Slurry Volume		Displacement	Mix Water Temp	Cement Circulated to Surface? <input type="checkbox"/>		Volume
						Washed Thru Perfs <input type="checkbox"/>		To
Customer or Authorized Representative			Schlumberger Supervisor			Circulation Lost <input type="checkbox"/>		Job Completed <input type="checkbox"/>
Randy Berke			Rogers / Hansen			-		-