

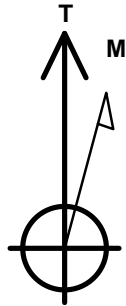
Condor Energy

Well Name: **Wickstrom 4-3H**

Surface Location: Wickstrom 4-2H Pad Sec.4-T6N-R60W
 North American Datum 1983 , US State Plane 1983 , Colorado Northern Zone
 Ground Elevation: 4787.8
 +N/-S +E/-W Northing Easting Latitude Longitude Slot
 0.0 0.0 1431959.01 3390718.86 40.510630 -104.094760
 RKB-12.5' WELL @ 4800.3ft (RKB-12.5')

WELLBORE TARGET DETAILS

Name	TVD	+N/-S	+E/-W	Shape
SECTION LINE	0.2	-240.9	1367.0	Polygon
HARDLINES 600' BHL	1.0	-4916.3	763.6	Polygon
HARDLINES 660' SHL	1.0	-840.0	767.0	Polygon
SHL 240'FSL & 1367'FEL, Sec.4	1.0	0.0	0.0	Point
BHL 660'FSL & 2021'FEL, Sec.9	6040.0	-4856.3	-656.4	Point
LANDING POINT 660'FNL & 2014'FEL, Sec.9	6040.0	-899.9	-647.9	Point



Azimuths to True North
 Magnetic North: 8.22°

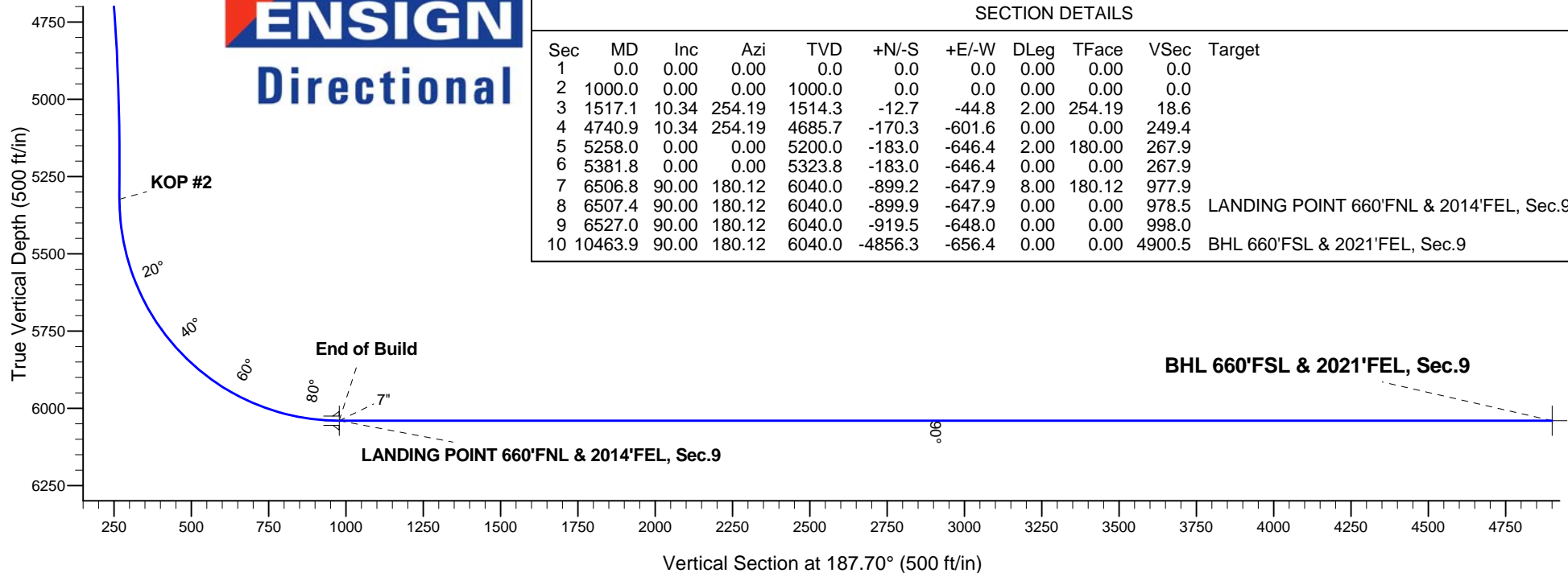
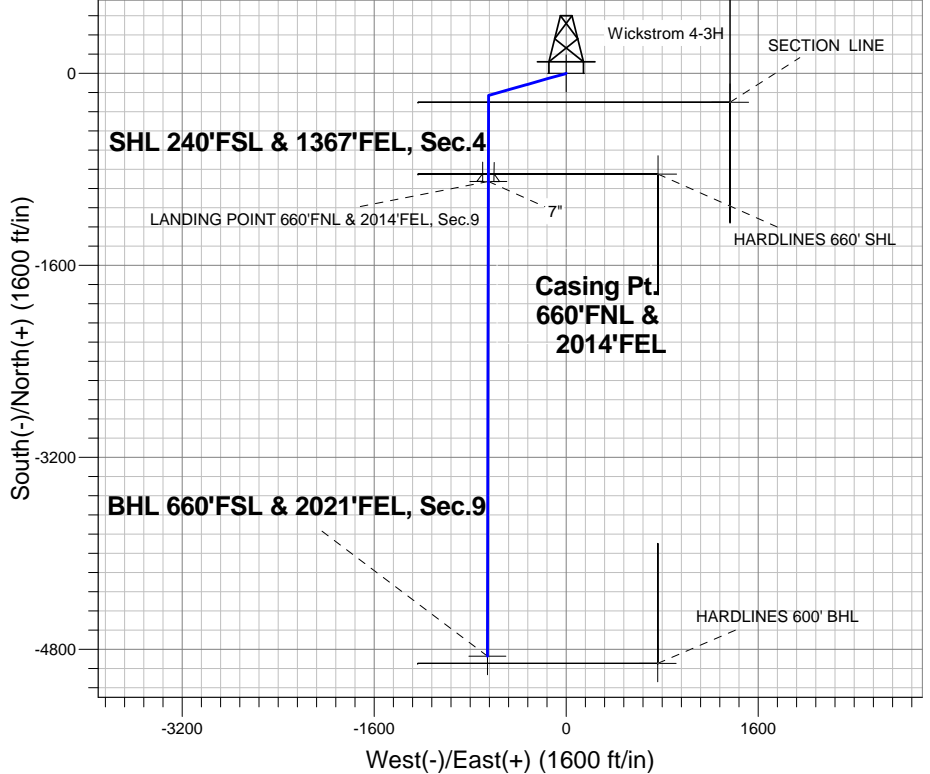
Magnetic Field
 Strength: 53034.8snT
 Dip Angle: 67.17°
 Date: 7/30/2013
 Model: IGRF2010

Wickstrom 4-2H Pad Sec.4-T6N-R60W
 Wickstrom 4-3H
 Plan #1 (7-30-13)
 10:49, July 31 2013

ANNOTATIONS

TVD	MD	Annotation
1000.0	1000.0	KOP #1
5323.8	5381.8	KOP #2
6040.0	6507.4	End of Build

South(-)/North(+) (1600 ft/in)



SECTION DETAILS

Sec	MD	Inc	Azi	TVD	+N/-S	+E/-W	DLeg	TFace	VSec	Target
1	0.0	0.00	0.00	0.0	0.0	0.0	0.00	0.00	0.0	
2	1000.0	0.00	0.00	1000.0	0.0	0.0	0.00	0.00	0.0	
3	1517.1	10.34	254.19	1514.3	-12.7	-44.8	2.00	254.19	18.6	
4	4740.9	10.34	254.19	4685.7	-170.3	-601.6	0.00	0.00	249.4	
5	5258.0	0.00	0.00	5200.0	-183.0	-646.4	2.00	180.00	267.9	
6	5381.8	0.00	0.00	5323.8	-183.0	-646.4	0.00	0.00	267.9	
7	6506.8	90.00	180.12	6040.0	-899.2	-647.9	8.00	180.12	977.9	
8	6507.4	90.00	180.12	6040.0	-899.9	-647.9	0.00	0.00	978.5	LANDING POINT 660'FNL & 2014'FEL, Sec.9
9	6527.0	90.00	180.12	6040.0	-919.5	-648.0	0.00	0.00	998.0	
10	10463.9	90.00	180.12	6040.0	-4856.3	-656.4	0.00	0.00	4900.5	BHL 660'FSL & 2021'FEL, Sec.9



Condor Energy

SEC.4-T6N-R60W

Wickstrom 4-2H Pad Sec.4-T6N-R60W

Wickstrom 4-3H

Wellbore #1

Plan: Plan #1 (7-30-13)

Standard Planning Report

31 July, 2013

Plan Sections										
Measured Depth (ft)	Inclination (°)	Azimuth (°)	Vertical Depth (ft)	+N/-S (ft)	+E/-W (ft)	Dogleg Rate (°/100ft)	Build Rate (°/100ft)	Turn Rate (°/100ft)	TFO (°)	Target
0.0	0.00	0.00	0.0	0.0	0.0	0.00	0.00	0.00	0.00	
1,000.0	0.00	0.00	1,000.0	0.0	0.0	0.00	0.00	0.00	0.00	
1,517.1	10.34	254.19	1,514.3	-12.7	-44.8	2.00	2.00	0.00	254.19	
4,740.9	10.34	254.19	4,685.7	-170.3	-601.6	0.00	0.00	0.00	0.00	
5,258.0	0.00	0.00	5,200.0	-183.0	-646.4	2.00	-2.00	0.00	180.00	
5,381.8	0.00	0.00	5,323.8	-183.0	-646.4	0.00	0.00	0.00	0.00	
6,506.8	90.00	180.12	6,040.0	-899.2	-647.9	8.00	8.00	0.00	180.12	
6,507.4	90.00	180.12	6,040.0	-899.9	-647.9	0.00	0.00	0.00	0.00	LANDING POINT 6
6,527.0	90.00	180.12	6,040.0	-919.5	-648.0	0.00	0.00	0.00	0.00	
10,463.9	90.00	180.12	6,040.0	-4,856.3	-656.4	0.00	0.00	0.00	0.00	BHL 660'FSL & 202

Database:	Landmark	Local Co-ordinate Reference:	Well Wickstrom 4-3H
Company:	Condor Energy	TVD Reference:	WELL @ 4800.3ft (RKB-12.5')
Project:	SEC.4-T6N-R60W	MD Reference:	WELL @ 4800.3ft (RKB-12.5')
Site:	Wickstrom 4-2H Pad Sec.4-T6N-R60W	North Reference:	True
Well:	Wickstrom 4-3H	Survey Calculation Method:	Minimum Curvature
Wellbore:	Wellbore #1		
Design:	Plan #1 (7-30-13)		

Planned Survey									
Measured Depth (ft)	Inclination (°)	Azimuth (°)	Vertical Depth (ft)	+N/-S (ft)	+E/-W (ft)	Vertical Section (ft)	Dogleg Rate (°/100ft)	Build Rate (°/100ft)	Turn Rate (°/100ft)
0.0	0.00	0.00	0.0	0.0	0.0	0.0	0.00	0.00	0.00
0.2	0.00	0.00	0.2	0.0	0.0	0.0	0.00	0.00	0.00
SECTION LINE									
1.0	0.00	0.00	1.0	0.0	0.0	0.0	0.00	0.00	0.00
HARDLINES 600' BHL - HARDLINES 660' SHL - SHL 240'FSL & 1367'FEL, Sec.4									
100.0	0.00	0.00	100.0	0.0	0.0	0.0	0.00	0.00	0.00
200.0	0.00	0.00	200.0	0.0	0.0	0.0	0.00	0.00	0.00
300.0	0.00	0.00	300.0	0.0	0.0	0.0	0.00	0.00	0.00
400.0	0.00	0.00	400.0	0.0	0.0	0.0	0.00	0.00	0.00
500.0	0.00	0.00	500.0	0.0	0.0	0.0	0.00	0.00	0.00
600.0	0.00	0.00	600.0	0.0	0.0	0.0	0.00	0.00	0.00
700.0	0.00	0.00	700.0	0.0	0.0	0.0	0.00	0.00	0.00
800.0	0.00	0.00	800.0	0.0	0.0	0.0	0.00	0.00	0.00
900.0	0.00	0.00	900.0	0.0	0.0	0.0	0.00	0.00	0.00
1,000.0	0.00	0.00	1,000.0	0.0	0.0	0.0	0.00	0.00	0.00
KOP #1									
1,100.0	2.00	254.19	1,100.0	-0.5	-1.7	0.7	2.00	2.00	0.00
1,200.0	4.00	254.19	1,199.8	-1.9	-6.7	2.8	2.00	2.00	0.00
1,300.0	6.00	254.19	1,299.5	-4.3	-15.1	6.3	2.00	2.00	0.00
1,400.0	8.00	254.19	1,398.7	-7.6	-26.8	11.1	2.00	2.00	0.00
1,500.0	10.00	254.19	1,497.5	-11.9	-41.9	17.4	2.00	2.00	0.00
1,517.1	10.34	254.19	1,514.3	-12.7	-44.8	18.6	2.00	2.00	0.00
1,600.0	10.34	254.19	1,595.8	-16.7	-59.1	24.5	0.00	0.00	0.00
1,700.0	10.34	254.19	1,694.2	-21.6	-76.4	31.7	0.00	0.00	0.00
1,800.0	10.34	254.19	1,792.6	-26.5	-93.6	38.8	0.00	0.00	0.00
1,900.0	10.34	254.19	1,891.0	-31.4	-110.9	46.0	0.00	0.00	0.00
2,000.0	10.34	254.19	1,989.4	-36.3	-128.2	53.1	0.00	0.00	0.00
2,100.0	10.34	254.19	2,087.7	-41.2	-145.5	60.3	0.00	0.00	0.00
2,200.0	10.34	254.19	2,186.1	-46.1	-162.7	67.5	0.00	0.00	0.00
2,300.0	10.34	254.19	2,284.5	-51.0	-180.0	74.6	0.00	0.00	0.00
2,400.0	10.34	254.19	2,382.9	-55.9	-197.3	81.8	0.00	0.00	0.00
2,500.0	10.34	254.19	2,481.2	-60.7	-214.6	88.9	0.00	0.00	0.00
2,600.0	10.34	254.19	2,579.6	-65.6	-231.8	96.1	0.00	0.00	0.00
2,700.0	10.34	254.19	2,678.0	-70.5	-249.1	103.2	0.00	0.00	0.00
2,800.0	10.34	254.19	2,776.4	-75.4	-266.4	110.4	0.00	0.00	0.00
2,900.0	10.34	254.19	2,874.7	-80.3	-283.6	117.6	0.00	0.00	0.00
3,000.0	10.34	254.19	2,973.1	-85.2	-300.9	124.7	0.00	0.00	0.00
3,100.0	10.34	254.19	3,071.5	-90.1	-318.2	131.9	0.00	0.00	0.00
3,200.0	10.34	254.19	3,169.9	-95.0	-335.5	139.0	0.00	0.00	0.00
3,300.0	10.34	254.19	3,268.2	-99.9	-352.7	146.2	0.00	0.00	0.00
3,400.0	10.34	254.19	3,366.6	-104.8	-370.0	153.4	0.00	0.00	0.00
3,500.0	10.34	254.19	3,465.0	-109.6	-387.3	160.5	0.00	0.00	0.00
3,600.0	10.34	254.19	3,563.4	-114.5	-404.6	167.7	0.00	0.00	0.00
3,700.0	10.34	254.19	3,661.7	-119.4	-421.8	174.8	0.00	0.00	0.00
3,800.0	10.34	254.19	3,760.1	-124.3	-439.1	182.0	0.00	0.00	0.00
3,900.0	10.34	254.19	3,858.5	-129.2	-456.4	189.2	0.00	0.00	0.00
4,000.0	10.34	254.19	3,956.9	-134.1	-473.6	196.3	0.00	0.00	0.00
4,100.0	10.34	254.19	4,055.2	-139.0	-490.9	203.5	0.00	0.00	0.00
4,200.0	10.34	254.19	4,153.6	-143.9	-508.2	210.6	0.00	0.00	0.00
4,300.0	10.34	254.19	4,252.0	-148.8	-525.5	217.8	0.00	0.00	0.00
4,400.0	10.34	254.19	4,350.4	-153.7	-542.7	225.0	0.00	0.00	0.00
4,500.0	10.34	254.19	4,448.7	-158.5	-560.0	232.1	0.00	0.00	0.00
4,600.0	10.34	254.19	4,547.1	-163.4	-577.3	239.3	0.00	0.00	0.00

Database:	Landmark	Local Co-ordinate Reference:	Well Wickstrom 4-3H
Company:	Condor Energy	TVD Reference:	WELL @ 4800.3ft (RKB-12.5')
Project:	SEC.4-T6N-R60W	MD Reference:	WELL @ 4800.3ft (RKB-12.5')
Site:	Wickstrom 4-2H Pad Sec.4-T6N-R60W	North Reference:	True
Well:	Wickstrom 4-3H	Survey Calculation Method:	Minimum Curvature
Wellbore:	Wellbore #1		
Design:	Plan #1 (7-30-13)		

Planned Survey									
Measured Depth (ft)	Inclination (°)	Azimuth (°)	Vertical Depth (ft)	+N/-S (ft)	+E/-W (ft)	Vertical Section (ft)	Dogleg Rate (°/100ft)	Build Rate (°/100ft)	Turn Rate (°/100ft)
4,700.0	10.34	254.19	4,645.5	-168.3	-594.6	246.4	0.00	0.00	0.00
4,740.9	10.34	254.19	4,685.7	-170.3	-601.6	249.4	0.00	0.00	0.00
4,800.0	9.16	254.19	4,744.0	-173.0	-611.3	253.4	2.00	-2.00	0.00
4,900.0	7.16	254.19	4,843.0	-176.9	-624.9	259.0	2.00	-2.00	0.00
5,000.0	5.16	254.19	4,942.4	-179.8	-635.2	263.3	2.00	-2.00	0.00
5,100.0	3.16	254.19	5,042.1	-181.8	-642.2	266.2	2.00	-2.00	0.00
5,200.0	1.16	254.19	5,142.0	-182.8	-645.8	267.7	2.00	-2.00	0.00
5,258.0	0.00	0.00	5,200.0	-183.0	-646.4	267.9	2.00	-2.00	0.00
5,300.0	0.00	0.00	5,242.0	-183.0	-646.4	267.9	0.00	0.00	0.00
5,381.8	0.00	0.00	5,323.8	-183.0	-646.4	267.9	0.00	0.00	0.00
KOP #2									
5,400.0	1.46	180.12	5,342.0	-183.2	-646.4	268.2	8.01	8.01	0.00
5,500.0	9.46	180.12	5,441.5	-192.7	-646.4	277.6	8.00	8.00	0.00
5,600.0	17.46	180.12	5,538.7	-216.0	-646.5	300.6	8.00	8.00	0.00
5,700.0	25.46	180.12	5,631.7	-252.5	-646.5	336.9	8.00	8.00	0.00
5,800.0	33.46	180.12	5,718.7	-301.7	-646.7	385.6	8.00	8.00	0.00
5,900.0	41.46	180.12	5,798.0	-362.4	-646.8	445.8	8.00	8.00	0.00
6,000.0	49.46	180.12	5,868.1	-433.7	-646.9	516.4	8.00	8.00	0.00
6,100.0	57.46	180.12	5,927.6	-513.9	-647.1	596.0	8.00	8.00	0.00
6,200.0	65.46	180.12	5,975.3	-601.7	-647.3	683.0	8.00	8.00	0.00
6,300.0	73.46	180.12	6,010.4	-695.3	-647.5	775.7	8.00	8.00	0.00
6,400.0	81.46	180.12	6,032.1	-792.8	-647.7	872.4	8.00	8.00	0.00
6,500.0	89.46	180.12	6,040.0	-892.4	-647.9	971.1	8.00	8.00	0.00
6,506.8	90.00	180.12	6,040.0	-899.2	-647.9	977.9	8.00	8.00	0.00
6,507.4	90.00	180.12	6,040.0	-899.9	-647.9	978.5	0.00	0.00	0.00
End of Build - 7" - LANDING POINT 660'FNL & 2014'FEL, Sec.9									
6,527.0	90.00	180.12	6,040.0	-919.5	-648.0	998.0	0.00	0.00	0.00
6,600.0	90.00	180.12	6,040.0	-992.4	-648.1	1,070.3	0.00	0.00	0.00
6,700.0	90.00	180.12	6,040.0	-1,092.4	-648.3	1,169.4	0.00	0.00	0.00
6,800.0	90.00	180.12	6,040.0	-1,192.4	-648.5	1,268.5	0.00	0.00	0.00
6,900.0	90.00	180.12	6,040.0	-1,292.4	-648.7	1,367.7	0.00	0.00	0.00
7,000.0	90.00	180.12	6,040.0	-1,392.4	-649.0	1,466.8	0.00	0.00	0.00
7,100.0	90.00	180.12	6,040.0	-1,492.4	-649.2	1,565.9	0.00	0.00	0.00
7,200.0	90.00	180.12	6,040.0	-1,592.4	-649.4	1,665.0	0.00	0.00	0.00
7,300.0	90.00	180.12	6,040.0	-1,692.4	-649.6	1,764.2	0.00	0.00	0.00
7,400.0	90.00	180.12	6,040.0	-1,792.4	-649.8	1,863.3	0.00	0.00	0.00
7,500.0	90.00	180.12	6,040.0	-1,892.4	-650.0	1,962.4	0.00	0.00	0.00
7,600.0	90.00	180.12	6,040.0	-1,992.4	-650.2	2,061.5	0.00	0.00	0.00
7,700.0	90.00	180.12	6,040.0	-2,092.4	-650.4	2,160.7	0.00	0.00	0.00
7,800.0	90.00	180.12	6,040.0	-2,192.4	-650.7	2,259.8	0.00	0.00	0.00
7,900.0	90.00	180.12	6,040.0	-2,292.4	-650.9	2,358.9	0.00	0.00	0.00
8,000.0	90.00	180.12	6,040.0	-2,392.4	-651.1	2,458.1	0.00	0.00	0.00
8,100.0	90.00	180.12	6,040.0	-2,492.4	-651.3	2,557.2	0.00	0.00	0.00
8,200.0	90.00	180.12	6,040.0	-2,592.4	-651.5	2,656.3	0.00	0.00	0.00
8,300.0	90.00	180.12	6,040.0	-2,692.4	-651.7	2,755.4	0.00	0.00	0.00
8,400.0	90.00	180.12	6,040.0	-2,792.4	-651.9	2,854.6	0.00	0.00	0.00
8,500.0	90.00	180.12	6,040.0	-2,892.4	-652.1	2,953.7	0.00	0.00	0.00
8,600.0	90.00	180.12	6,040.0	-2,992.4	-652.3	3,052.8	0.00	0.00	0.00
8,700.0	90.00	180.12	6,040.0	-3,092.4	-652.6	3,151.9	0.00	0.00	0.00
8,800.0	90.00	180.12	6,040.0	-3,192.4	-652.8	3,251.1	0.00	0.00	0.00
8,900.0	90.00	180.12	6,040.0	-3,292.4	-653.0	3,350.2	0.00	0.00	0.00
9,000.0	90.00	180.12	6,040.0	-3,392.4	-653.2	3,449.3	0.00	0.00	0.00
9,100.0	90.00	180.12	6,040.0	-3,492.4	-653.4	3,548.5	0.00	0.00	0.00
9,200.0	90.00	180.12	6,040.0	-3,592.4	-653.6	3,647.6	0.00	0.00	0.00

Database:	Landmark	Local Co-ordinate Reference:	Well Wickstrom 4-3H
Company:	Condor Energy	TVD Reference:	WELL @ 4800.3ft (RKB-12.5')
Project:	SEC.4-T6N-R60W	MD Reference:	WELL @ 4800.3ft (RKB-12.5')
Site:	Wickstrom 4-2H Pad Sec.4-T6N-R60W	North Reference:	True
Well:	Wickstrom 4-3H	Survey Calculation Method:	Minimum Curvature
Wellbore:	Wellbore #1		
Design:	Plan #1 (7-30-13)		

Planned Survey										
Measured Depth (ft)	Inclination (°)	Azimuth (°)	Vertical Depth (ft)	+N/-S (ft)	+E/-W (ft)	Vertical Section (ft)	Dogleg Rate (°/100ft)	Build Rate (°/100ft)	Turn Rate (°/100ft)	
9,300.0	90.00	180.12	6,040.0	-3,692.4	-653.8	3,746.7	0.00	0.00	0.00	
9,400.0	90.00	180.12	6,040.0	-3,792.4	-654.0	3,845.8	0.00	0.00	0.00	
9,500.0	90.00	180.12	6,040.0	-3,892.4	-654.2	3,945.0	0.00	0.00	0.00	
9,600.0	90.00	180.12	6,040.0	-3,992.4	-654.5	4,044.1	0.00	0.00	0.00	
9,700.0	90.00	180.12	6,040.0	-4,092.4	-654.7	4,143.2	0.00	0.00	0.00	
9,800.0	90.00	180.12	6,040.0	-4,192.4	-654.9	4,242.3	0.00	0.00	0.00	
9,900.0	90.00	180.12	6,040.0	-4,292.4	-655.1	4,341.5	0.00	0.00	0.00	
10,000.0	90.00	180.12	6,040.0	-4,392.4	-655.3	4,440.6	0.00	0.00	0.00	
10,100.0	90.00	180.12	6,040.0	-4,492.4	-655.5	4,539.7	0.00	0.00	0.00	
10,200.0	90.00	180.12	6,040.0	-4,592.4	-655.7	4,638.9	0.00	0.00	0.00	
10,300.0	90.00	180.12	6,040.0	-4,692.4	-655.9	4,738.0	0.00	0.00	0.00	
10,400.0	90.00	180.12	6,040.0	-4,792.4	-656.2	4,837.1	0.00	0.00	0.00	
10,463.9	90.00	180.12	6,040.0	-4,856.3	-656.4	4,900.5	0.00	0.00	0.00	
BHL 660'FSL & 2021'FEL, Sec.9										

Casing Points					
Measured Depth (ft)	Vertical Depth (ft)	Name	Casing Diameter (")	Hole Diameter (")	
6,507.4	6,040.0	7"	7	7-1/2	

Plan Annotations					
Measured Depth (ft)	Vertical Depth (ft)	Local Coordinates		Comment	
		+N/-S (ft)	+E/-W (ft)		
1,000.0	1,000.0	0.0	0.0	KOP #1	
5,381.8	5,323.8	-183.0	-646.4	KOP #2	
6,507.4	6,040.0	-899.8	-647.9	End of Build	