

WELLBORE DIAGRAM

Operator:	EnCana Oil & Gas (USA) Inc.
Well Name:	Bearden 24-6
Lease Number:	
Location:	NESW Sec 6 T1N R68W 6th PM
Field:	Wattenberg
County:	Weld
API Number:	05-123-23559-00
Diagram Date:	2007-06-14

Surface Loc:

FORMATIONS

Sussex	4424'
Shannon	5030'
Niobrara	7428'
Codell	7778'
J Sand	8202'

Surface Casing

18 jts 8.625" 24# N-80 ST&C
csg @ 763'; cmt w/ 320 sx
Type III lead; 75 sx Type III tail

Production Casing

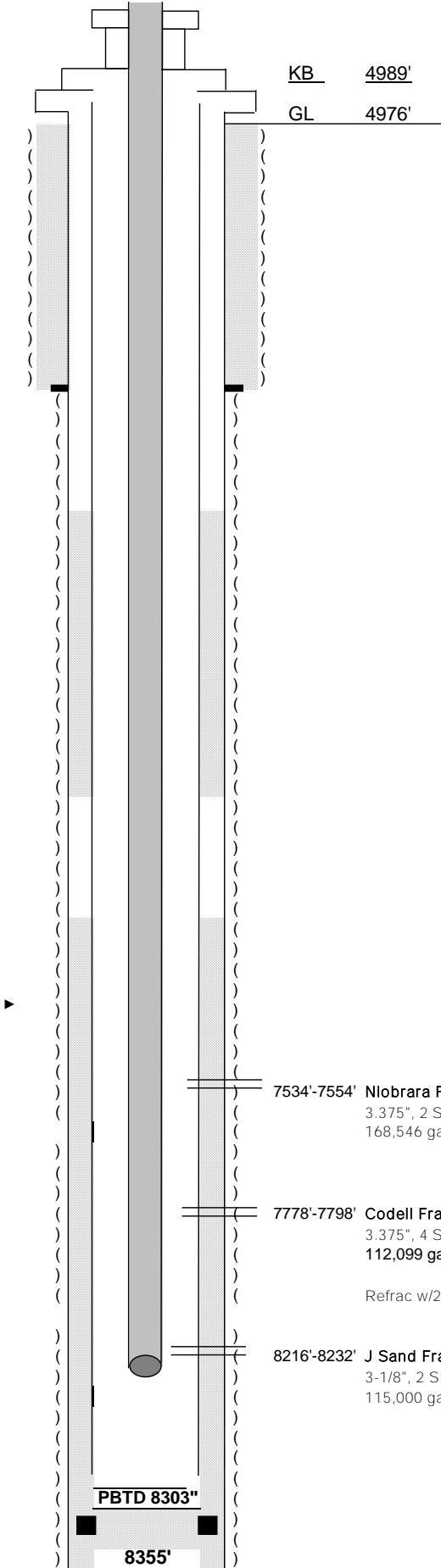
204 jts 4.5" 11.60# I-80 @ 8340'
Cmt w/ 550 sx G 50/50 Poz
TOC @ 7150

DV Tool @ 5505

TOC 3650'

Tubing

260 jts., J-55, 46# set @ 8134'
SN, notched collar



Well History

Spud Date	2007-04-21
TD Reached	2007-04-28
Rig Released	2007-04-30
First Sales:	2007-06-19

7534'-7554' Niobrara Fracs 5/30/07 (40 holes)
3.375", 2 SPF, 120° phasing
168,546 gal SLF, 250,480# 20/40

7778'-7798' Codell Frac 5/30/07 (80 holes)
3.375", 4 SPF, 120° phasing
112,099 gal SLf 238,800# 20/40

Refrac w/250,500 # sand and 78,179 gals frac fluid (6/26/13)

8216'-8232' J Sand Frac 5/29/07 (32 holes)
3-1/8", 2 SPF, 60° phasing
115,000 gal Slickwater, 238,200# 20/40

PBTD 8303"

8355'