

Company: Omimex Petroleum, Inc

Well: Bledsoe 13x-2-5-45

Field: Ballyneal

County: Yuma State: Colorado

Platform Express									
Array Induction									
with Linear Correlation									
County:		Yuma							
Field:		Ballyneal							
Location:									
Well:		Bledsoe 13x-2-5-45							
Company:		Omimex Petroleum, Inc							
Logging Date		26-Jun-2013							
Run Number		Run 1							
Depth Driller		2736.00 ft							
Schlumberger Depth		2732.00 ft							
Bottom Log Interval		2732.00 ft							
Top Log Interval		473.00 ft							
Casing Driller Size @ Depth		7 in @ 454.00 ft							
Casing Schlumberger		473 ft							
Bit Size		6.25 in							
Type Fluid In Hole		Fresh Water							
Density		Viscosity		31 s					
Fluid Loss		PH							
Source of Sample		Flowline							
RM @ Meas Temp		0.11 ohm.m @ 81.6 degF							
RMF @ Meas Temp		0.08 ohm.m @ 81.6 degF							
RMC @ Meas Temp		0.14 ohm.m @ 81.6 degF							
Source RMF		RMC		Calculated					
RM @ BHT		RMF @ BHT		0.08 @ 111 0.06 @ 111					
Max Recorded Temperatures		111 degF 111 111							
Circulation Stopped		Time		26-Jun-2013 20:45:00					
Logger on Bottom		Time		27-Jun-2013 00:31:12					
Unit Number		Location:		2154		Fort Morgan			
Recorded By		Arvin Shi							
Witnessed By		Paul Dekaye							

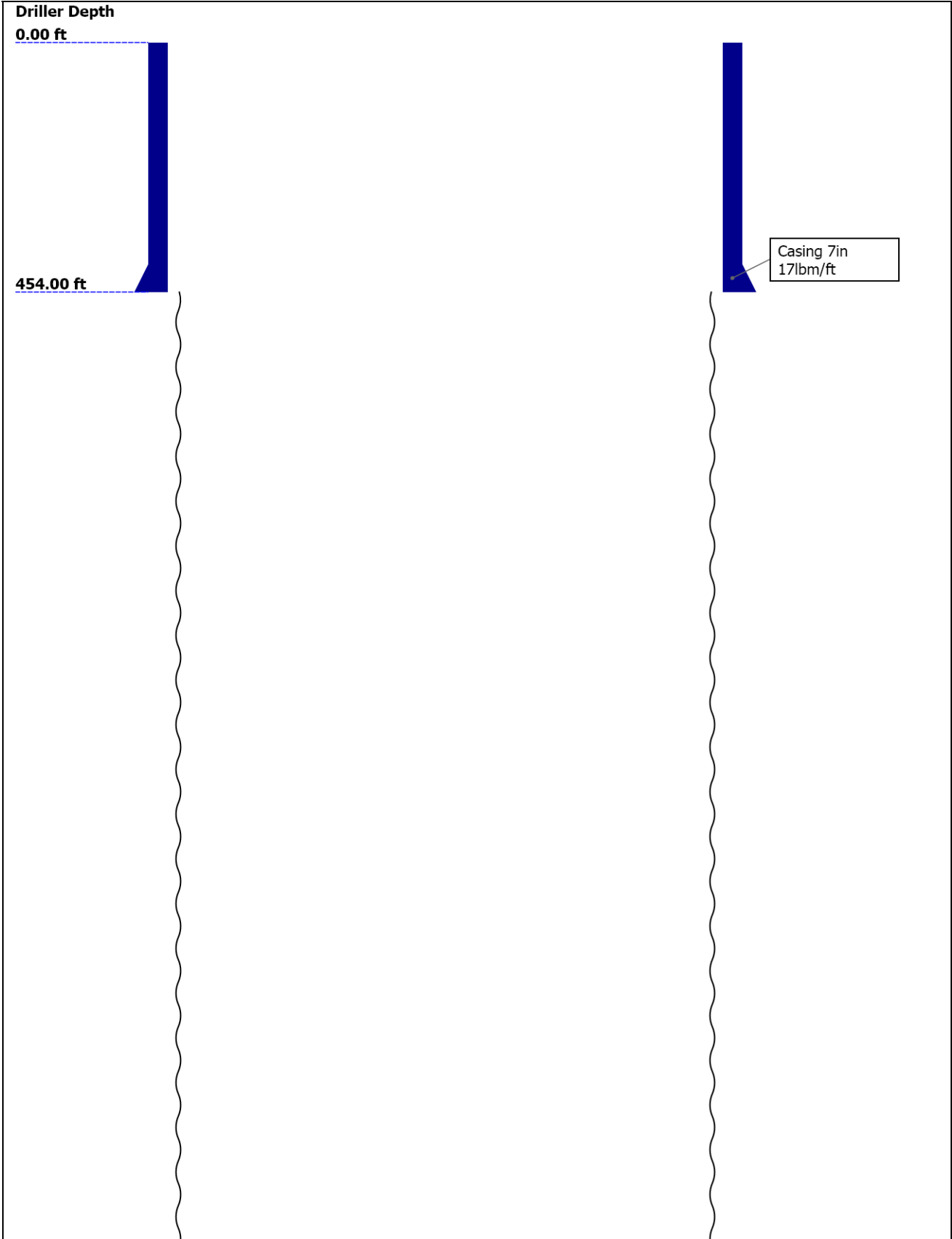
Disclaimer

THE USE OF AND RELIANCE UPON THIS RECORDED-DATA BY THE HEREIN NAMED COMPANY (AND ANY OF ITS AFFILIATES, PARTNERS, REPRESENTATIVES, AGENTS, CONSULTANTS AND EMPLOYEES) IS SUBJECT TO THE TERMS AND CONDITIONS AGREED UPON BETWEEN SCHLUMBERGER AND THE COMPANY, INCLUDING: (a) RESTRICTIONS ON USE OF THE RECORDED-DATA; (b) DISCLAIMERS AND WAIVERS OF WARRANTIES AND REPRESENTATIONS REGARDING COMPANY'S USE AND RELIANCE UPON THE RECORDED-DATA; AND (c) CUSTOMER'S FULL AND SOLE RESPONSIBILITY FOR ANY INFERENCE DRAWN OR DECISION MADE IN CONNECTION WITH THE USE OF THIS RECORDED-DATA.

Contents

- Header
- Disclaimer
- Contents
- Well Sketch
- Borehole Size/Casing/Tubing Record
- Operational Run Summary
- Remarks and Equipment Summary
- Depth Summary
- Run 1 5" Induction
 - Integration Summary
 - Software Version
 - Composite Summary
 - Log (EMD 5in Induction)
 - Parameter Listing
- Run 1 5" Induction
 - Composite Summary
 - EMD 5in Induction RA

Well Sketch



2736.00 ft

Open Hole 6.25in

Borehole Size/Casing/Tubing Record

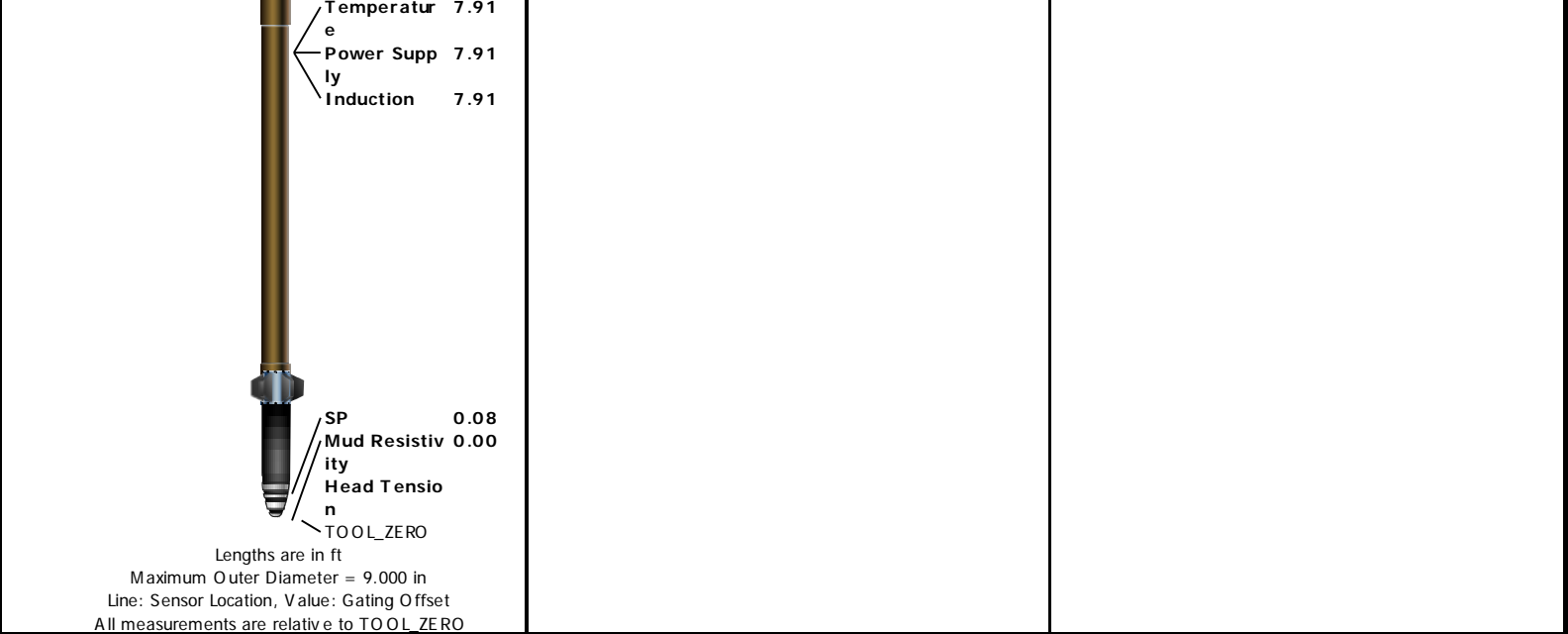
Bit						
Bit Size (in)	6.25					
Top Driller (ft)	454					
Top Logger (ft)	473					
Bottom Driller (ft)	2736					
Bottom Logger (ft)	2732					
Casing						
Size (in)	7					
Weight (lbm/ft)	17					
Inner Diameter (in)	6.54					
Top Driller (ft)	0					
Top Logger (ft)	0					
Bottom Driller (ft)	454					
Bottom Logger (ft)	473					

Operational Run Summary

Parameter (unit)	Run 1					
Date Log Started	26-Jun-2013					
Time Log Started	23:59:39					
Date Log Finished	27-Jun-2013					
Time Log Finished	01:28:16					
Top Log Interval (ft)	473.00					
Bottom Log Interval (ft)	2732.00					
Total Depth (ft)	2732.00					
Max Hole Deviation (deg)	1.29					
Azimuth of Max Deviation (deg)	166.66					
Bit Size (in)	6.250					
Logging Unit Number	2154					
Logging Unit Location	Fort Morgan					
Recorded By	Arvin Shi					
Witnessed By	Paul Dekaye					
Service Order Number	C6VJ-00062					

Remarks and Equipment Summary

Run 1: Toolstring		Run 1: Remarks	
Equip name LEH-QT LEH-QT	Length 55.57	MP name	Offset
DTC-H ECH-KC DTC-H	52.65	CTEM HV	51.75 0.00
A daptor_Head	49.65	TelStatus ToolStatus	49.65 49.65
GPIT-F GPIH-B DHRU-F GPIC-F	41.65	GPIT-F Incl inometer	40.23
HGNS-H HGNH NPV-N NSR-F:2554 HMCA-H HACCZ-H:6991 HGNS-H	37.65	GPIT Temperatur e GR	0.00 37.62 36.91
HDRS-H ECH-MEB HRCC-H HRMS-H GPV-Q Long Spacing:28 620 HRGD-H:3870 Short Spacing Backscatter GSR-J:5471	28.24	CNL Porosit y HGNS HMCA Accelerome ter HRCC	30.57 28.24 28.24 0.00 24.24
AIT-H:392 AHIS:392 AHRM	16.00	MCFL Caliper TLD Density	18.81 18.33 17.94



Depth Summary

Depth Control Parameters	Run 1		
Conveyance Type	Wireline		
Rig Type	Land		
Depth Measuring Device	Run 1		
Type	IDW-JA		
Serial Number	6122		
Calibration Date	19-Jun-2013		
Calibration Cable Type	7-46 P-LXS		
Wheel Correction 1	-2		
Wheel Correction 2	-3		
Tension Device	Run 1		
Type	CMTD-B/A		
Serial Number	1433		
Calibration Date	21-Jun-2013		
Calibration Points	10		
Calibration RMS	6		
Calibration Peak Error	9		
Logging Cable	Run 1		
Type	7-46NT-XS		
Logging Cable Length (ft)	24000.00		

Run 1

5" Induction

Integration Summary

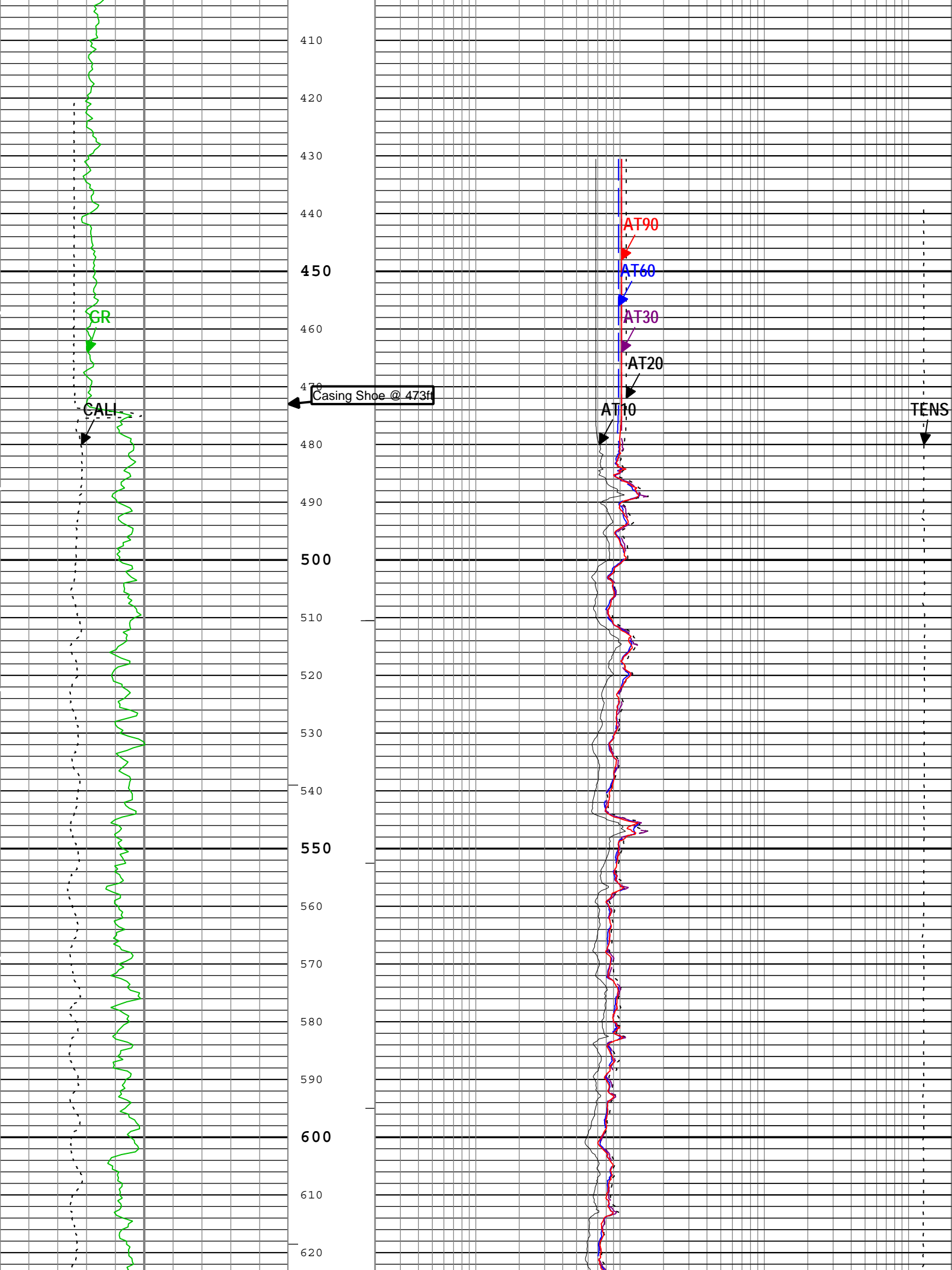
Output Channel(s)	Output Description	Input Parameter	Output Value	Unit
ICV	Integrated Cement Volume	GCSE_UP_PASS, FCD	258.84	ft3
IHV	Integrated Hole Volume	GCSE_UP_PASS	509.28	ft3

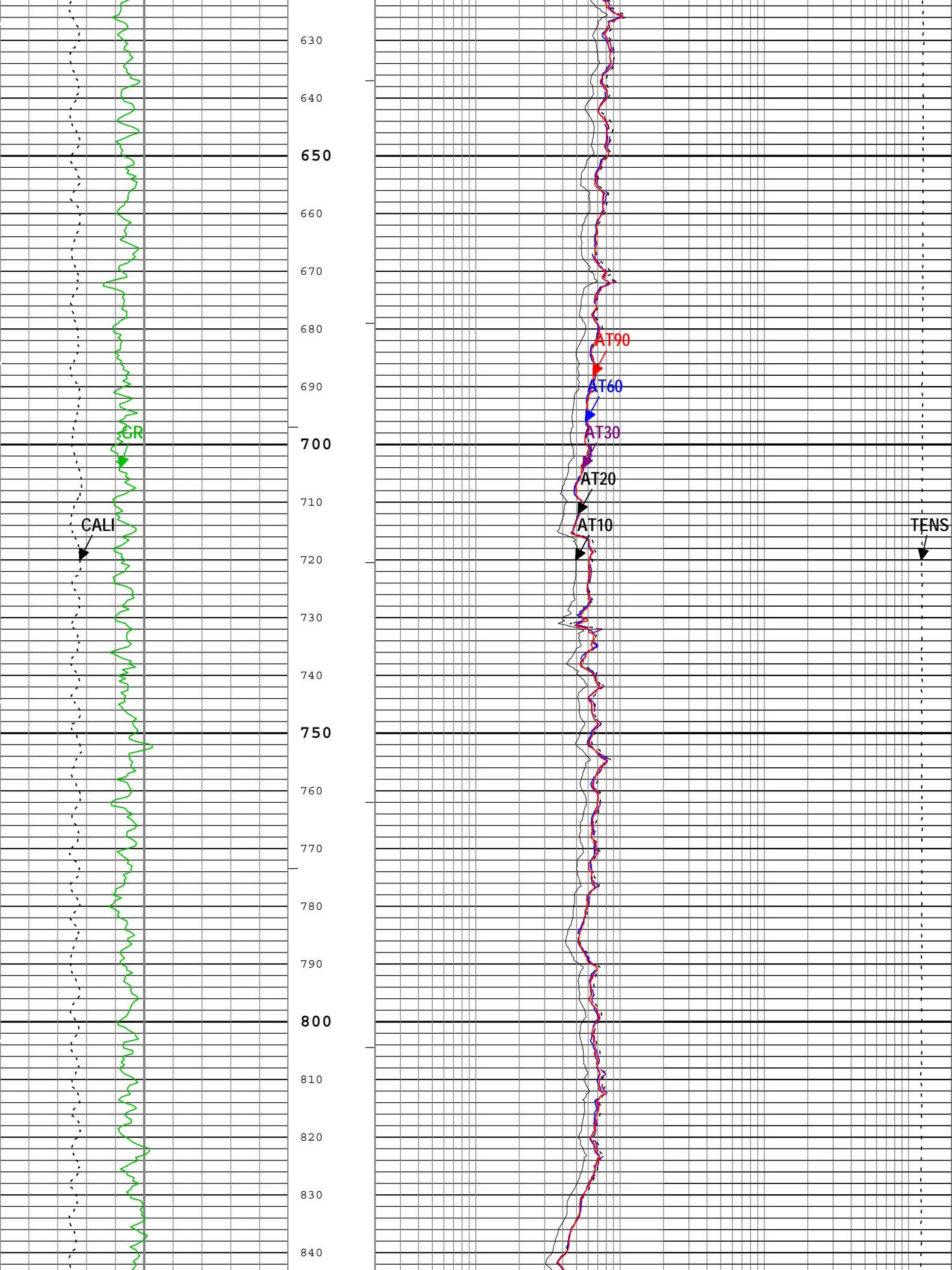
Software Version

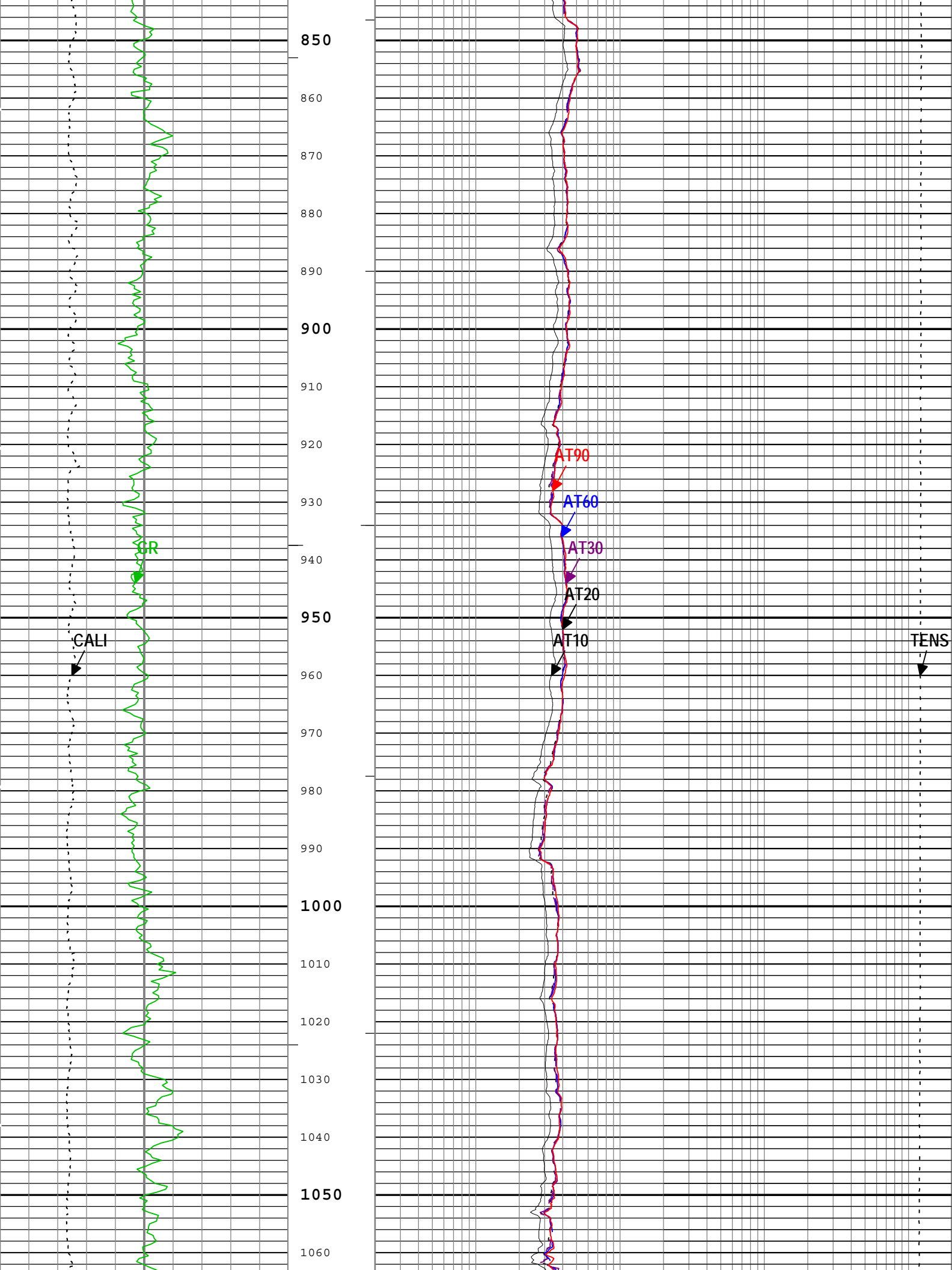
Acquisition System	Version
MaxWell	3.1.9755.0
Application Patch	SP-20130325-3.1.9755.1799

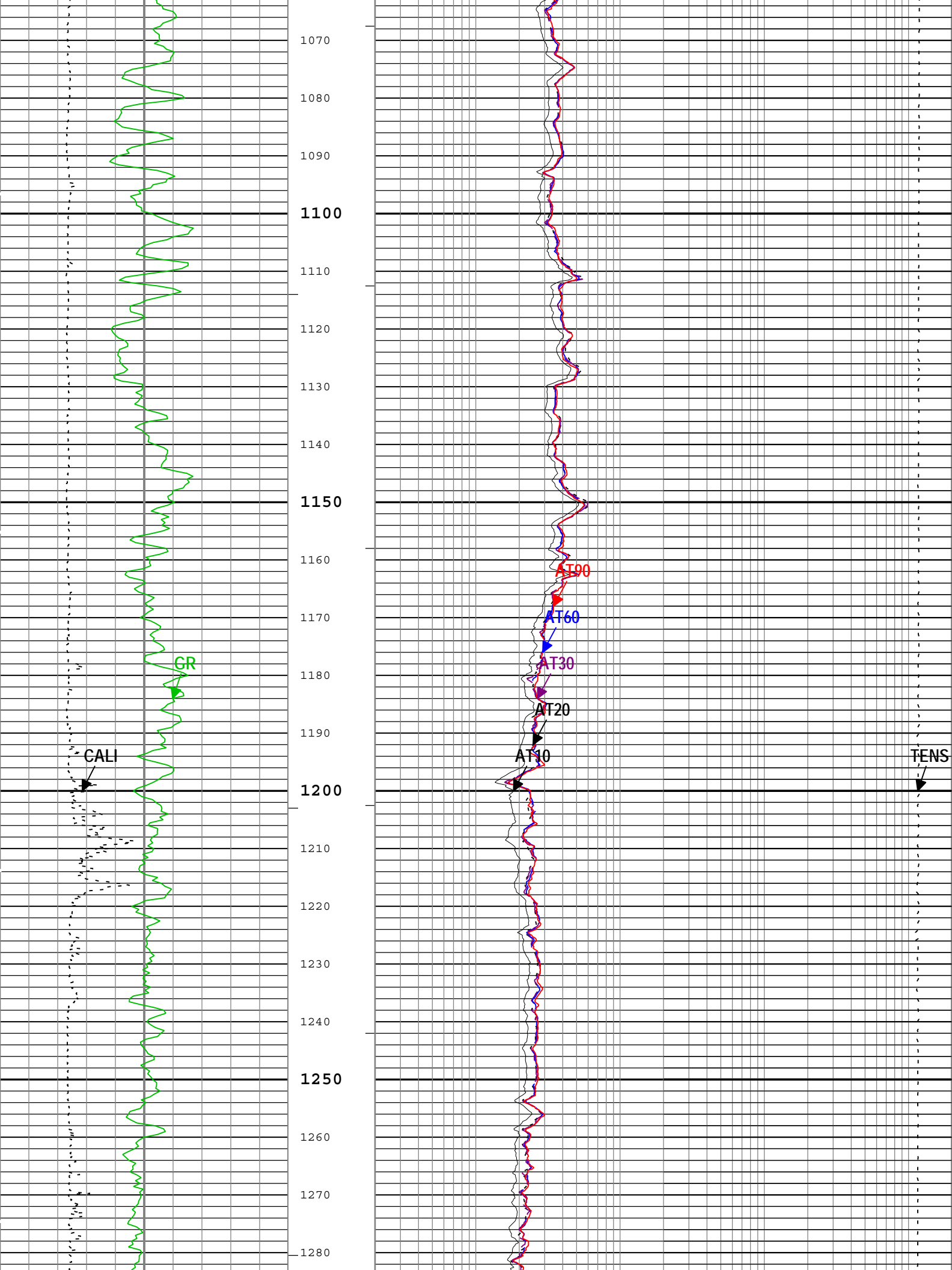
Computation	Description	Version
-------------	-------------	---------

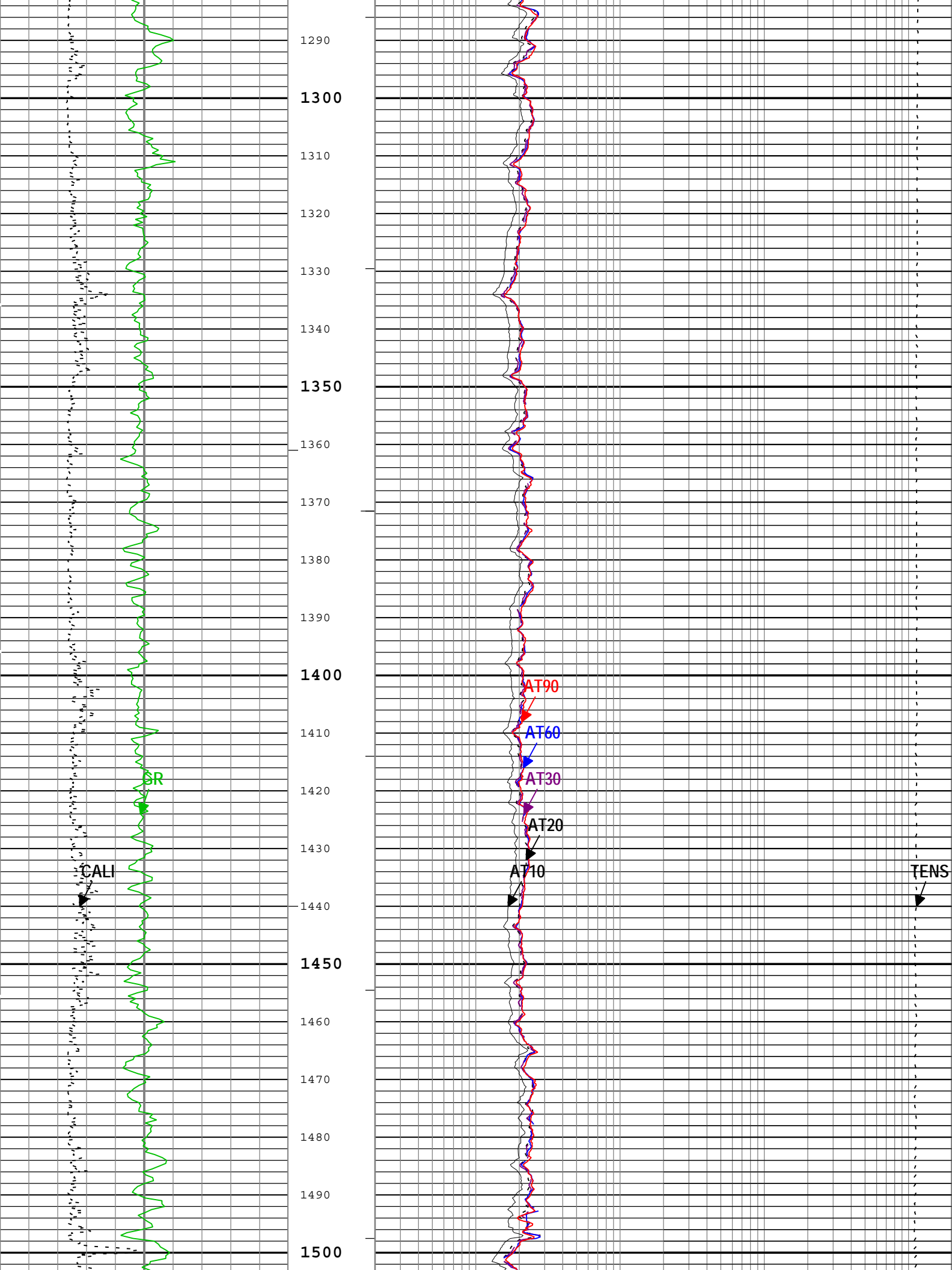
Borehole		Borehole Ensemble provides common Borehole Parameters and Channels					3.1.9755.1799	
Tool Elements		Description			Software Version		Firmware Version	
HRCC-H		HILT High-Resolution Control Cartridge, 150 degC			3.1.9755.0		2.0	
AHIS		Array Induction Sonde - H			3.1.9755.1799			
HGNS-H		HILT Gamma-Ray and Neutron Sonde, 150 degC			3.1.9755.0		2.0	
Pass Summary								
Run Name	Pass Objective	Direction	Top	Bottom	Start	Stop	Depth Shift	Include Parallel Data
Run 1	Log[3]:Up	Up	438.30 ft	2741.44 ft	27-Jun-2013 12:37:15 AM	27-Jun-2013 1:23:52 AM	0.00 ft	true
All depths are referenced to toolstring zero								
Log		Run 1: Log[3]:Up						
Description: AIT Basic Log Two Format: Log (EMD 5in Induction) Index Scale: 5 in per 100 ft Index Unit: ft Index Type: Measured Depth Creation Date: 27-Jun-2013 02:03:31								
Channel	Source		Sampling					
AT10	AIT-H:AHIS:AHIS		3in					
AT20	AIT-H:AHIS:AHIS		3in					
AT30	AIT-H:AHIS:AHIS		3in					
AT60	AIT-H:AHIS:AHIS		3in					
AT90	AIT-H:AHIS:AHIS		3in					
CALI	HDRS-H:HRCC-H:HRCC-H		1in					
GR	HGNS-H:HGNS-H:HGNS-H		6in					
ICV	Borehole		6in					
IHV	Borehole		6in					
TENS	WLWorkflow		6in					
TIME_1900	WLWorkflow		0.1in					
IHV - Integrated Hole Volume every 10.00 (ft3)								
IHV - Integrated Hole Volume every 100.00 (ft3)								
ICV - Integrated Cement Volume every 10.00 (ft3)								
ICV - Integrated Cement Volume every 100.00 (ft3)								
TIME_1900 - Time Marked every 60.00 (s)								
<div><div>Cable Tension (TENS)</div><div>10000 lbf 0</div></div>								
Array Induction Two Foot Resistivity A10 (AT10) AIT-H								
0.2 ohm.m 2000								
Array Induction Two Foot Resistivity A20 (AT20) AIT-H								
0.2 ohm.m 2000								
Array Induction Two Foot Resistivity A30 (AT30) AIT-H								
0.2 ohm.m 2000								
Array Induction Two Foot Resistivity A60 (AT60) AIT-H								
0.2 ohm.m 2000								
Array Induction Two Foot Resistivity A90 (AT90) AIT-H								
0.2 ohm.m 2000								
<div><div>Gamma Ray Backup</div><div>4 in 14</div><div>Gamma Ray (GR) HGNS-H</div><div>0 gAPI 200</div></div>								
<div><div>390</div><div>400</div></div>								

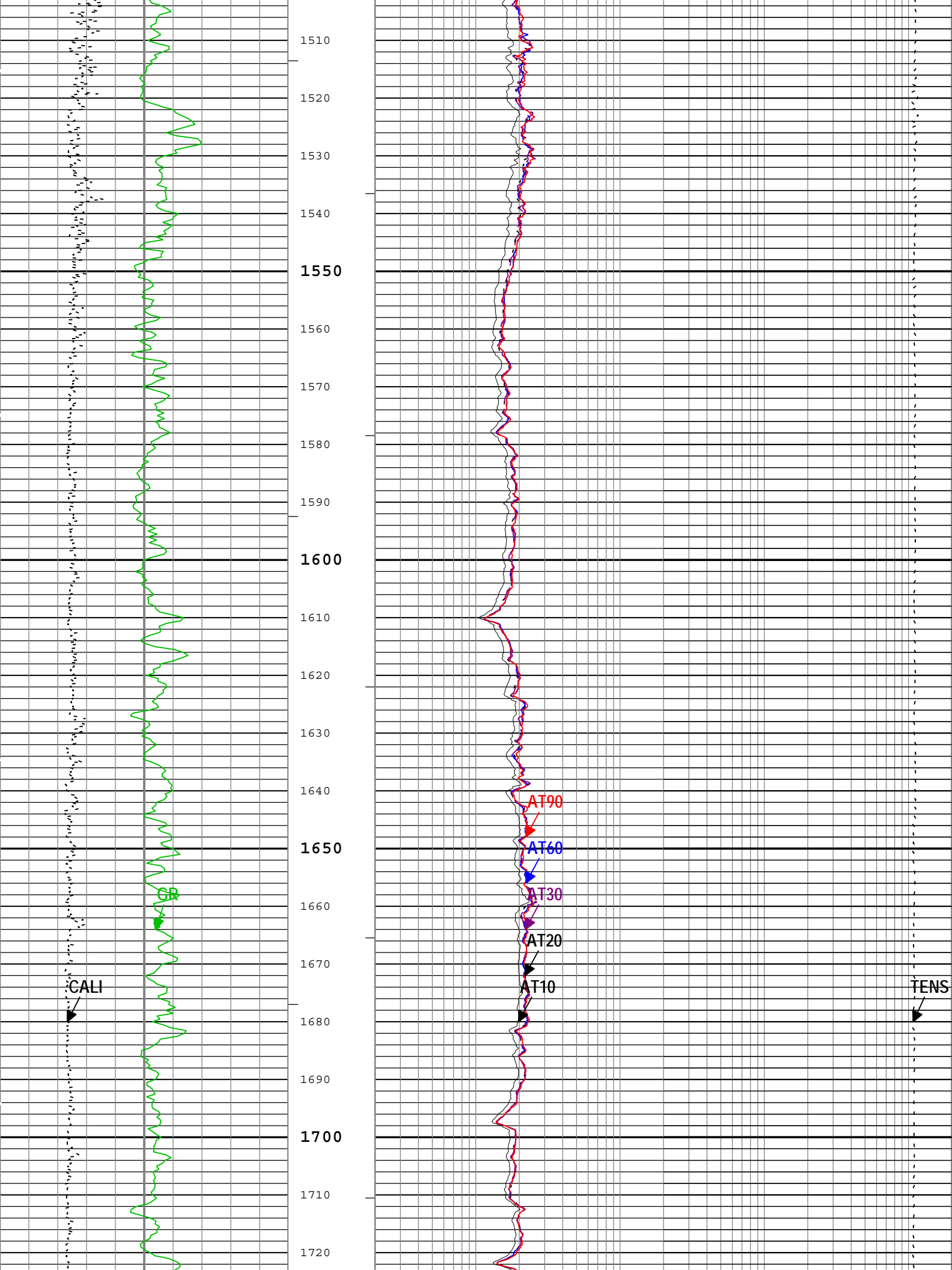


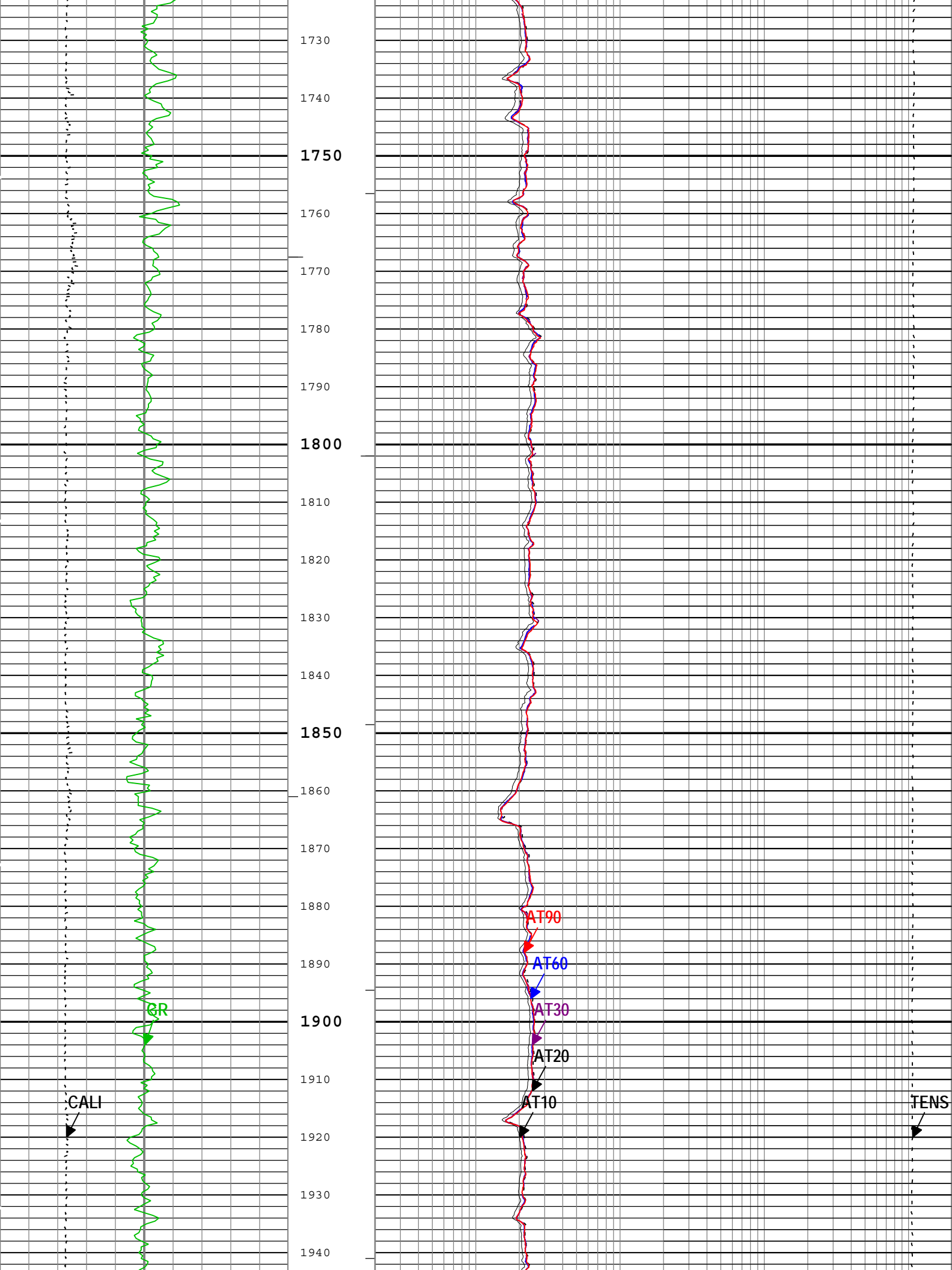


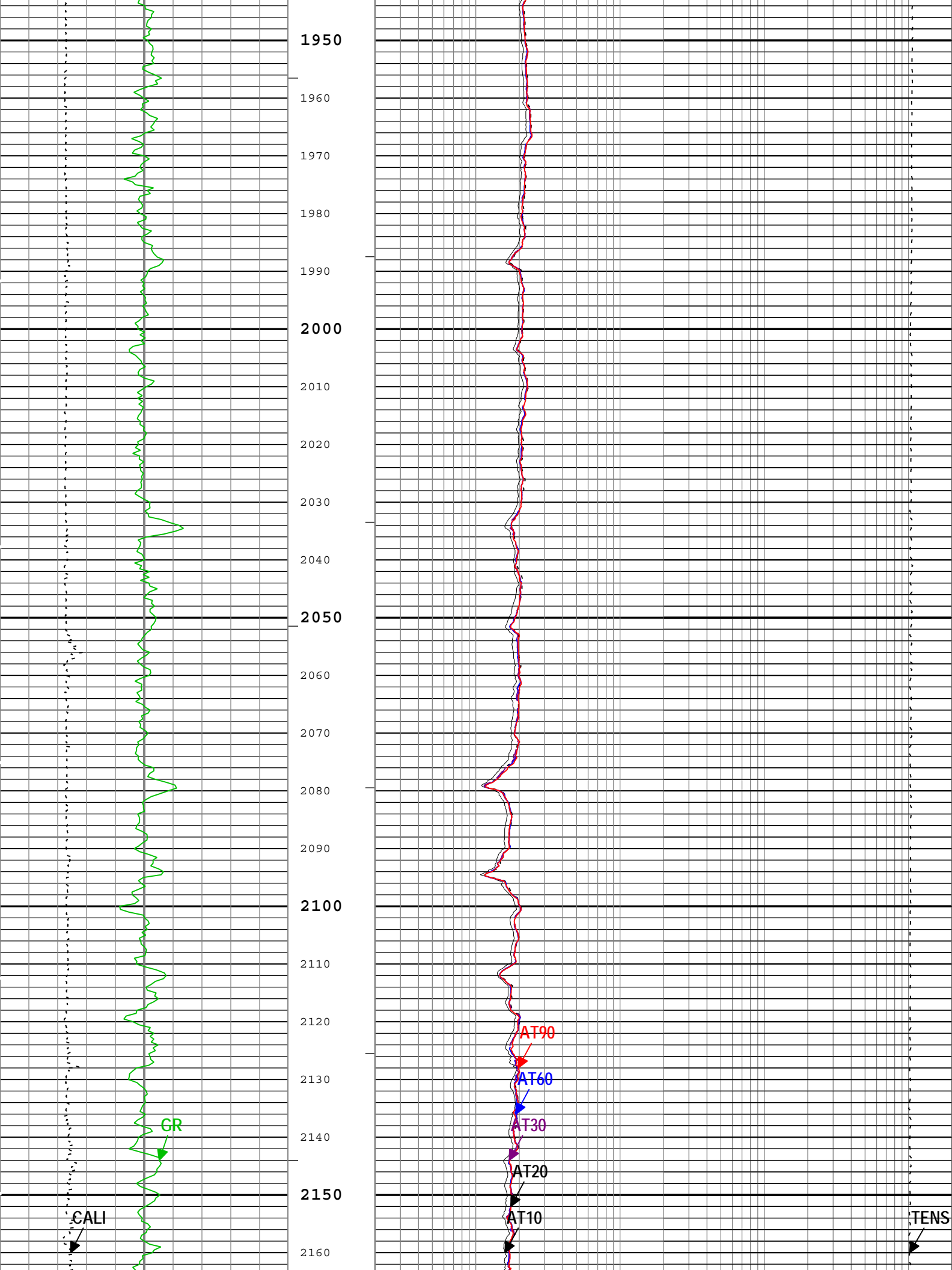


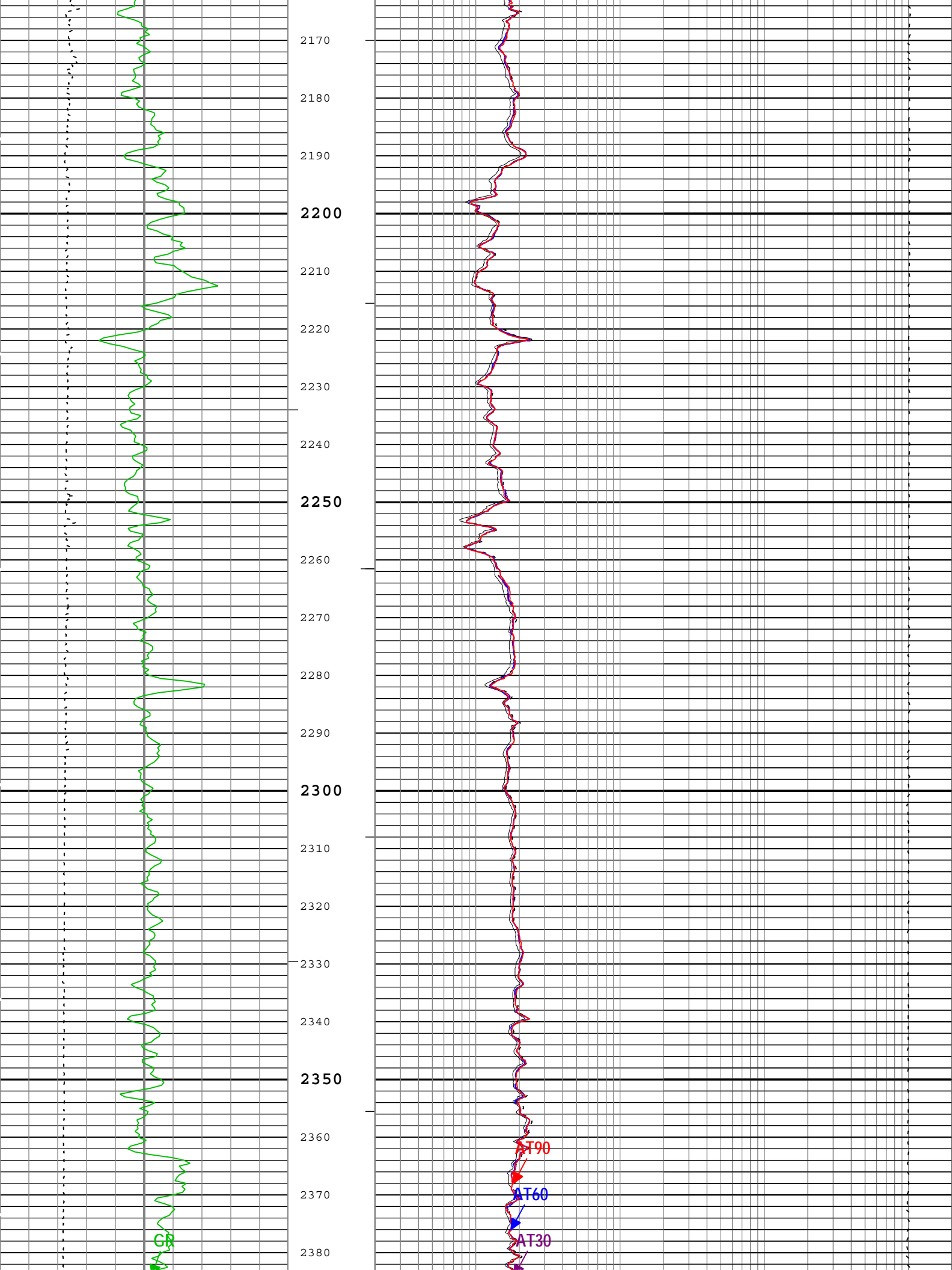


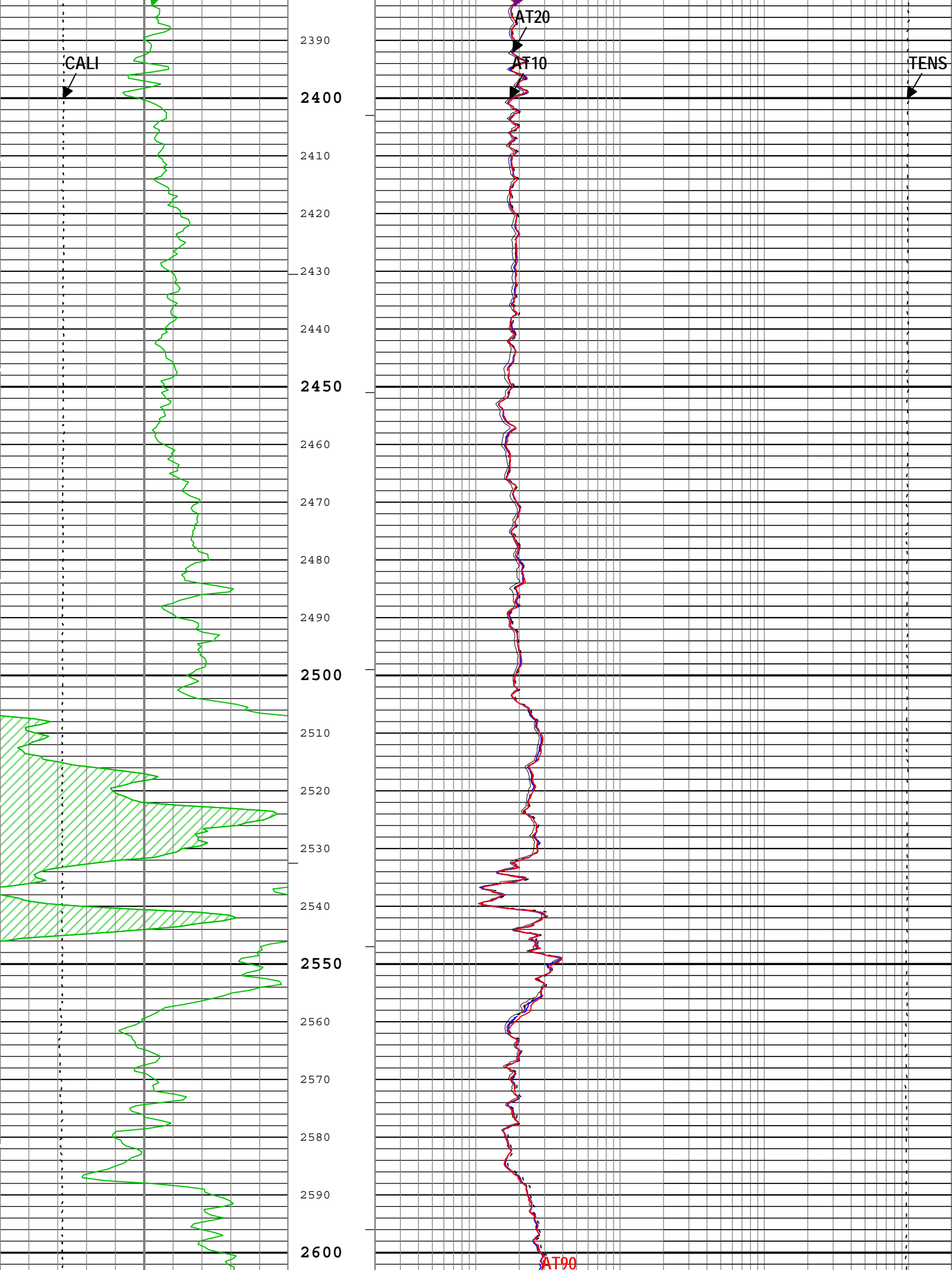


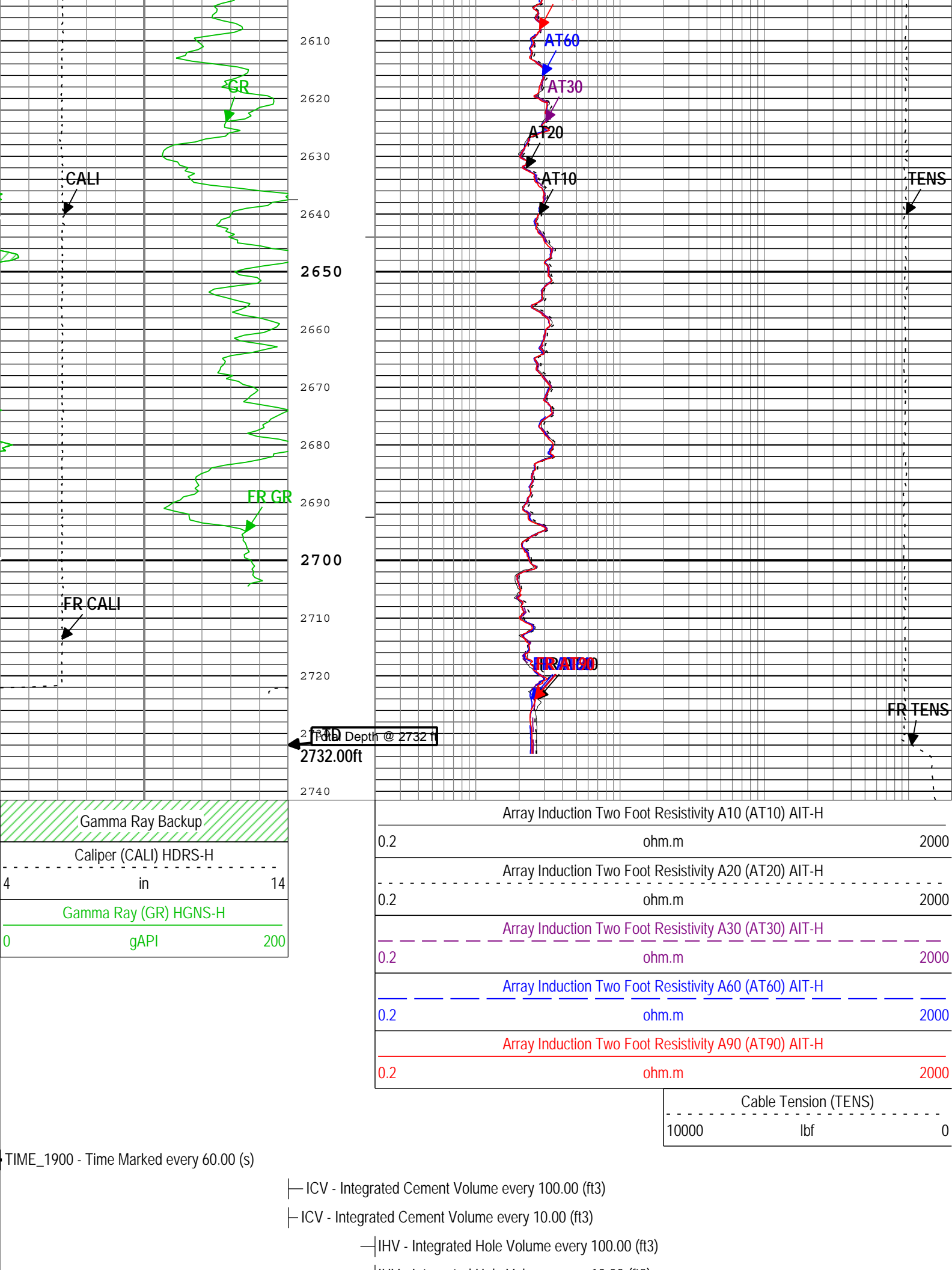








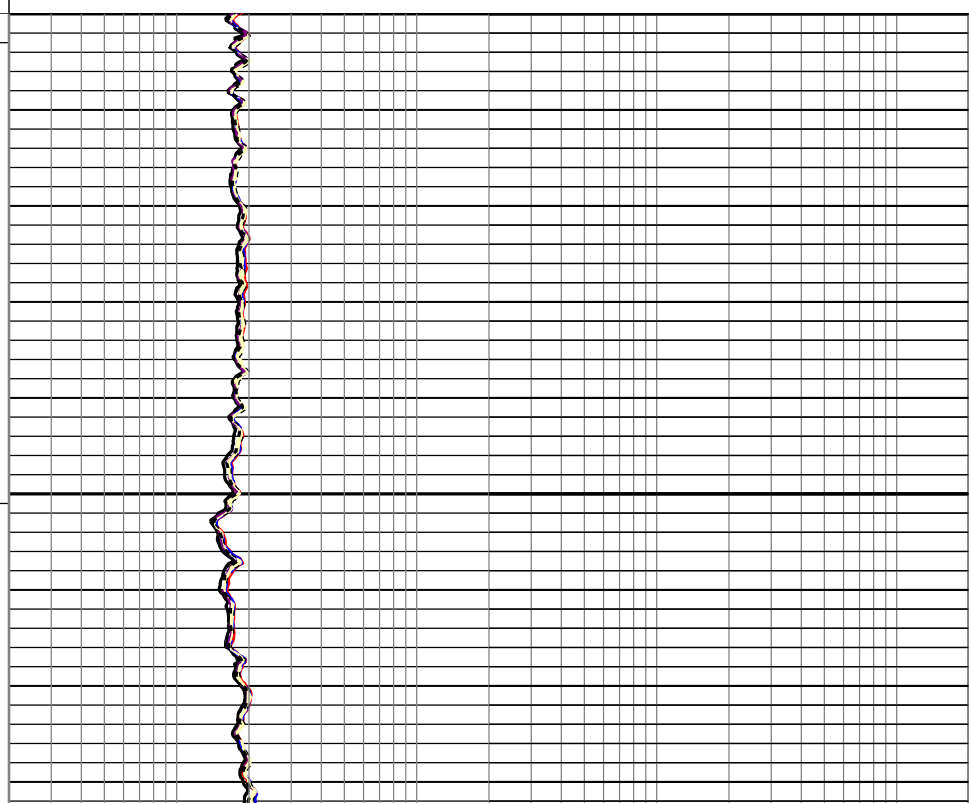
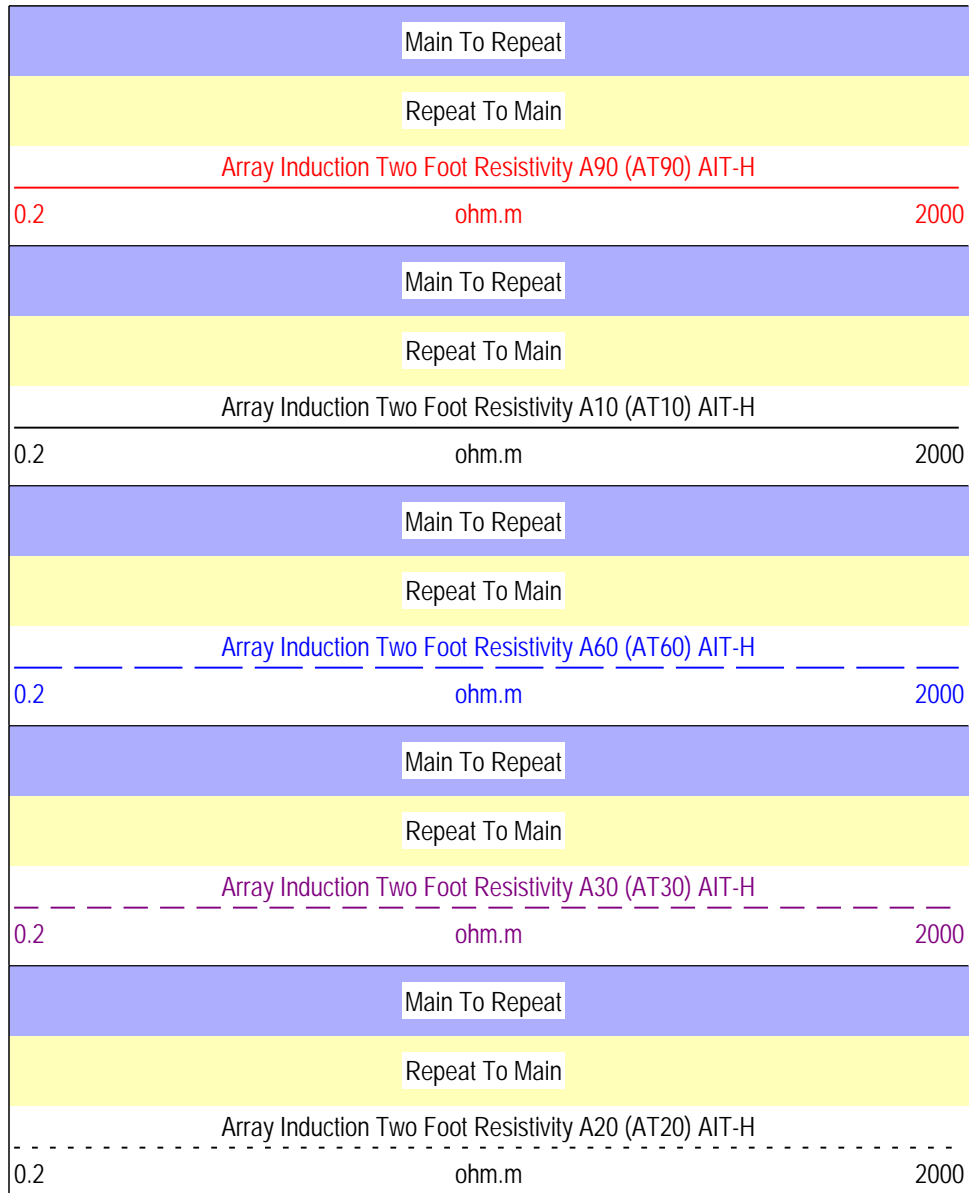
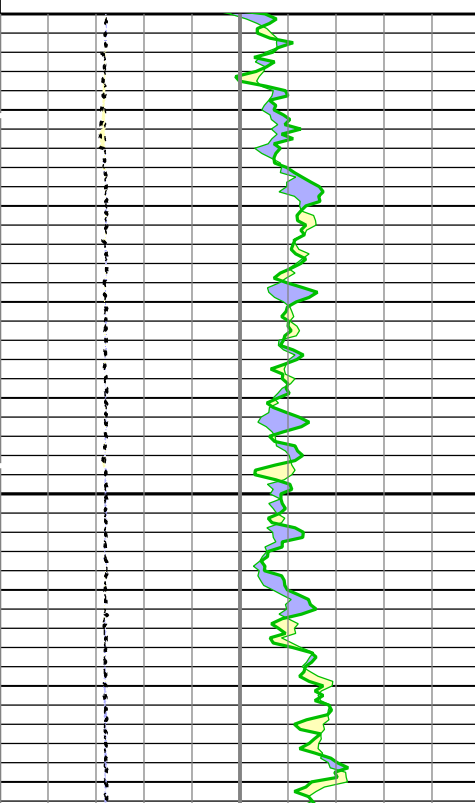
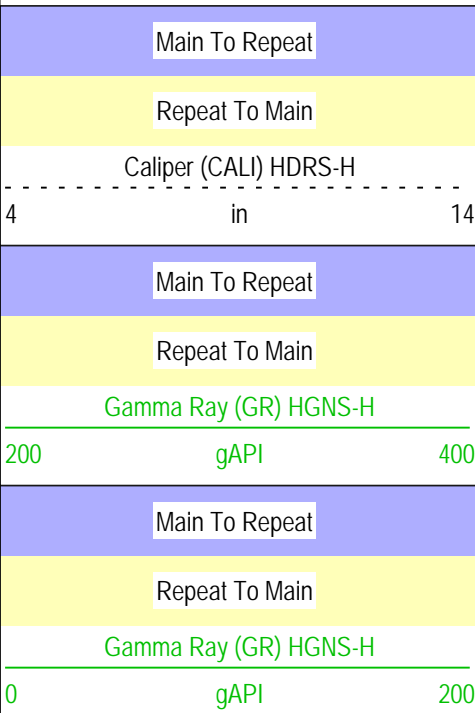


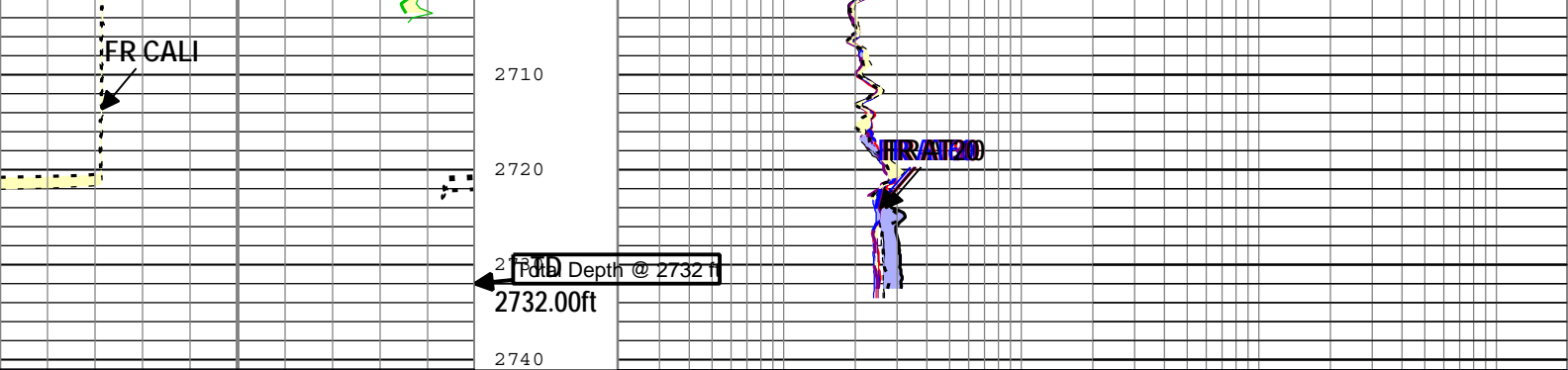


TIME_1900 - Time Marked every 60.00 (s)

ICV - Integrated Cement Volume every 10.00 (ft3)

ICV - Integrated Cement Volume every 100.00 (ft3)





Main To Repeat		
Repeat To Main		
Caliper (CALI) HDRS-H		
4	in	14
Main To Repeat		
Repeat To Main		
Gamma Ray (GR) HGNS-H		
200	gAPI	400
Main To Repeat		
Repeat To Main		
Gamma Ray (GR) HGNS-H		
0	gAPI	200

Main To Repeat		
Repeat To Main		
Array Induction Two Foot Resistivity A90 (AT90) AIT-H		
0.2	ohm.m	2000
Main To Repeat		
Repeat To Main		
Array Induction Two Foot Resistivity A10 (AT10) AIT-H		
0.2	ohm.m	2000
Main To Repeat		
Repeat To Main		
Array Induction Two Foot Resistivity A60 (AT60) AIT-H		
0.2	ohm.m	2000
Main To Repeat		
Repeat To Main		
Array Induction Two Foot Resistivity A30 (AT30) AIT-H		
0.2	ohm.m	2000
Main To Repeat		
Repeat To Main		
Array Induction Two Foot Resistivity A20 (AT20) AIT-H		
0.2	ohm.m	2000

— ICV - Integrated Cement Volume every 100.00 (ft3)

— ICV - Integrated Cement Volume every 10.00 (ft3)

TIME_1900 - Time Marked every 60.00 (s)

— IHV - Integrated Hole Volume every 100.00 (ft3)

— IHV - Integrated Hole Volume every 10.00 (ft3)

Description: AIT Basic Log Two Format: EMD 5in Induction RA Index Scale: 5 in per 100 ft Index Unit: ft Index Type: Measured Depth Creation Date: 27-Jun-2013 02:03:32

Company: Omimex Petroleum, Inc

Schlumberger

Well: Bledsoe 13x-2-5-45

Field:	Ballyneal
County:	Yuma
State:	Colorado
Platform Express Array Induction with Linear Correlation	