

Company: Omimex Petroleum, Inc

Well: Bledsoe 13x-2-5-45

Field: Ballyneal

County: Yuma State: Colorado

County: Yuma		State: Colorado	
Well: Bledsoe 13x-2-5-45			
Field: Ballyneal			
Company: Omimex Petroleum, Inc			
Well: Bledsoe 13x-2-5-45			
Location: Ballyneal			
Field: Ballyneal			
County: Yuma			
State: Colorado			
Platform Express			
Caliper			
Cement Volume			
SHL : 306' FSL x 630' FWL SWSW			
Elev. :			
K.B. :			
G.L. :			
D.F. :			
3817.00 ft			
3811.00 ft			
3816.00 ft			
Location:			
Permanent Datum:			
Ground Level :			
Log Measured From:			
Kelly Bushing :			
Drilling Measured From:			
Kelly Bushing :			
API Serial No. :			
Section: 2			
Township: 5N			
Range: 45W			
Logging Date			
26-Jun-2013			
Run Number			
Run 1			
Depth Driller			
2736.00 ft			
Schlumberger Depth			
2732.00 ft			
Bottom Log Interval			
2732.00 ft			
Top Log Interval			
473.00 ft			
Casing Driller Size @ Depth			
7 in @ 454.00 ft			
Casing Schlumberger			
473 ft			
Bit Size			
6.25 in			
Type Fluid In Hole			
Fresh Water			
Density			
9 lbm/gal			
Viscosity			
31 s			
Fluid Loss			
PH			
Source of Sample			
Flowline			
RM @ Meas Temp			
0.11 ohm.m @ 81.6 degF			
RMF @ Meas Temp			
0.08 ohm.m @ 81.6 degF			
RMC @ Meas Temp			
0.14 ohm.m @ 81.6 degF			
Source RMF			
Calculated			
RM @ BHT			
0.08 @ 111 0.06 @ 111			
Max Recorded Temperatures			
111 degF 111 111			
Circulation Stopped			
26-Jun-2013 20:45:00			
Logger on Bottom			
27-Jun-2013 00:31:12			
Unit Number			
2154			
Recorded By			
Arvin Shi			
Witnessed By			
Paul Dekaye			

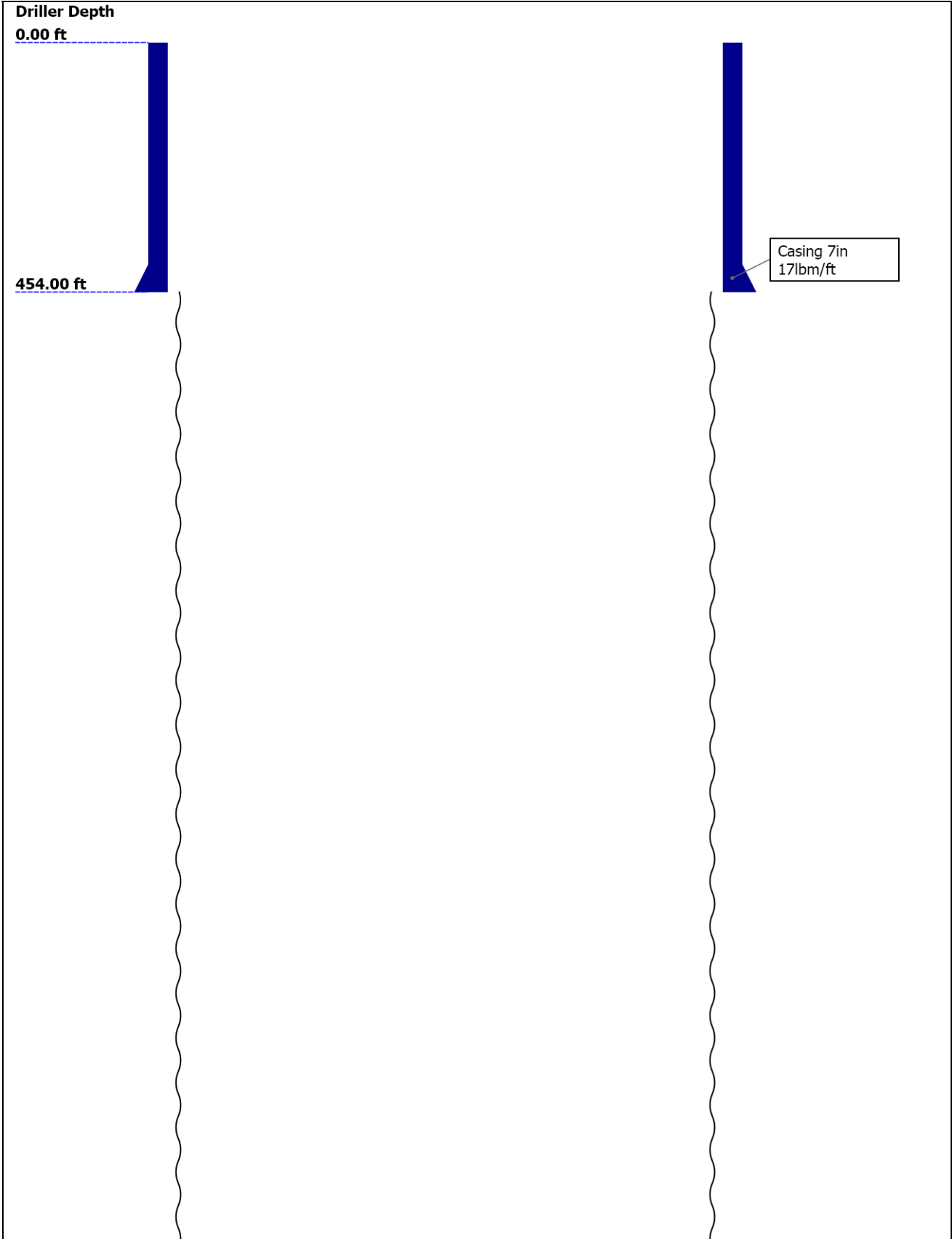
Disclaimer

THE USE OF AND RELIANCE UPON THIS RECORDED-DATA BY THE HEREIN NAMED COMPANY (AND ANY OF ITS AFFILIATES, PARTNERS, REPRESENTATIVES, AGENTS, CONSULTANTS AND EMPLOYEES) IS SUBJECT TO THE TERMS AND CONDITIONS AGREED UPON BETWEEN SCHLUMBERGER AND THE COMPANY, INCLUDING: (a) RESTRICTIONS ON USE OF THE RECORDED-DATA; (b) DISCLAIMERS AND WAIVERS OF WARRANTIES AND REPRESENTATIONS REGARDING COMPANY'S USE AND RELIANCE UPON THE RECORDED-DATA; AND (c) CUSTOMER'S FULL AND SOLE RESPONSIBILITY FOR ANY INFERENCE DRAWN OR DECISION MADE IN CONNECTION WITH THE USE OF THIS RECORDED-DATA.

Contents

- Header
- Disclaimer
- Contents
- Well Sketch
- Borehole Size/Casing/Tubing Record
- Operational Run Summary
- Remarks and Equipment Summary
- Depth Summary
- Run 1
 - Integration Summary
 - Software Version
 - Composite Summary
 - Log (Noble East Caliper)
 - Parameter Listing
- Tail

Well Sketch



2736.00 ft

Open Hole 6.25in

Borehole Size/Casing/Tubing Record

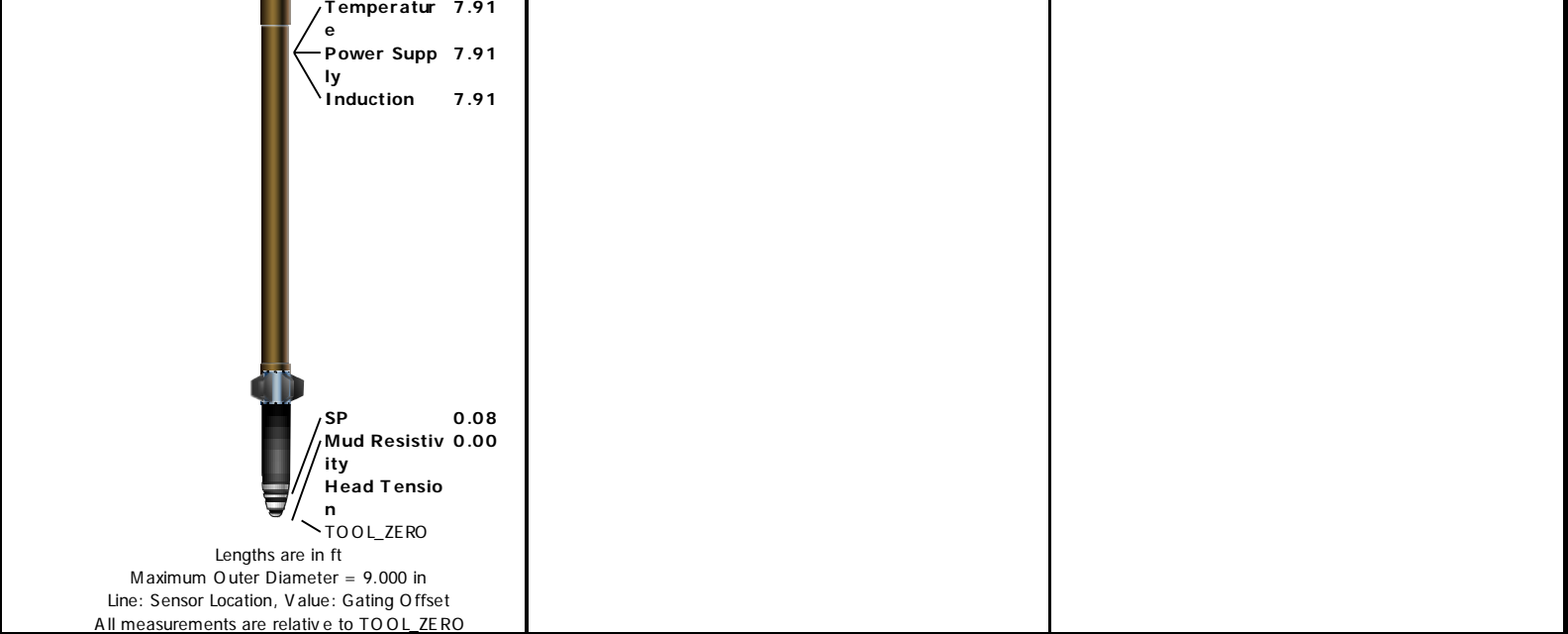
Bit						
Bit Size (in)	6.25					
Top Driller (ft)	454					
Top Logger (ft)	473					
Bottom Driller (ft)	2736					
Bottom Logger (ft)	2732					
Casing						
Size (in)	7					
Weight (lbm/ft)	17					
Inner Diameter (in)	6.54					
Top Driller (ft)	0					
Top Logger (ft)	0					
Bottom Driller (ft)	454					
Bottom Logger (ft)	473					

Operational Run Summary

Parameter (unit)	Run 1					
Date Log Started	26-Jun-2013					
Time Log Started	23:59:39					
Date Log Finished	27-Jun-2013					
Time Log Finished	01:28:16					
Top Log Interval (ft)	473.00					
Bottom Log Interval (ft)	2732.00					
Total Depth (ft)	2732.00					
Max Hole Deviation (deg)	1.29					
Azimuth of Max Deviation (deg)	166.66					
Bit Size (in)	6.250					
Logging Unit Number	2154					
Logging Unit Location	Fort Morgan					
Recorded By	Arvin Shi					
Witnessed By	Paul Dekaye					
Service Order Number	C6VJ-00062					

Remarks and Equipment Summary

Run 1: Toolstring		Run 1: Remarks	
Equip name LEH-QT LEH-QT	Length 55.57	MP name 	Offset
DTC-H ECH-KC DTC-H	52.65	CTEM HV	51.75 0.00
A daptor_Head	49.65	TelStatus ToolStatus	49.65 49.65
GPIT-F GPIH-B DHRU-F GPIC-F	41.65	GPIT-F Incl inometer	40.23
HGNS-H HGNH NPV-N NSR-F:2554 HMCA-H HACCZ-H:6991 HGNS-H	37.65	GPIT Temperatur e GR	0.00 37.62 36.91
HDRS-H ECH-MEB HRCC-H HRMS-H GPV-Q Long Spacing:28 620 HRGD-H:3870 Short Spacing Backscatter GSR-J:5471	28.24	CNL Porosit y HGNS HMCA Accelerome ter HRCC	30.57 28.24 28.24 0.00 24.24
AIT-H:392 AHIS:392 AHRM	16.00	MCFL Caliper TLD Density	18.81 18.33 17.94



Depth Summary

Depth Control Parameters	Run 1		
Conveyance Type	Wireline		
Rig Type	Land		
Depth Measuring Device	Run 1		
Type	IDW-JA		
Serial Number	6122		
Calibration Date	19-Jun-2013		
Calibration Cable Type	7-46 P-LXS		
Wheel Correction 1	-2		
Wheel Correction 2	-3		
Tension Device	Run 1		
Type	CMTD-B/A		
Serial Number	1433		
Calibration Date	21-Jun-2013		
Calibration Points	10		
Calibration RMS	6		
Calibration Peak Error	9		
Logging Cable	Run 1		
Type	7-46NT-XS		
Logging Cable Length (ft)	24000.00		

Run 1

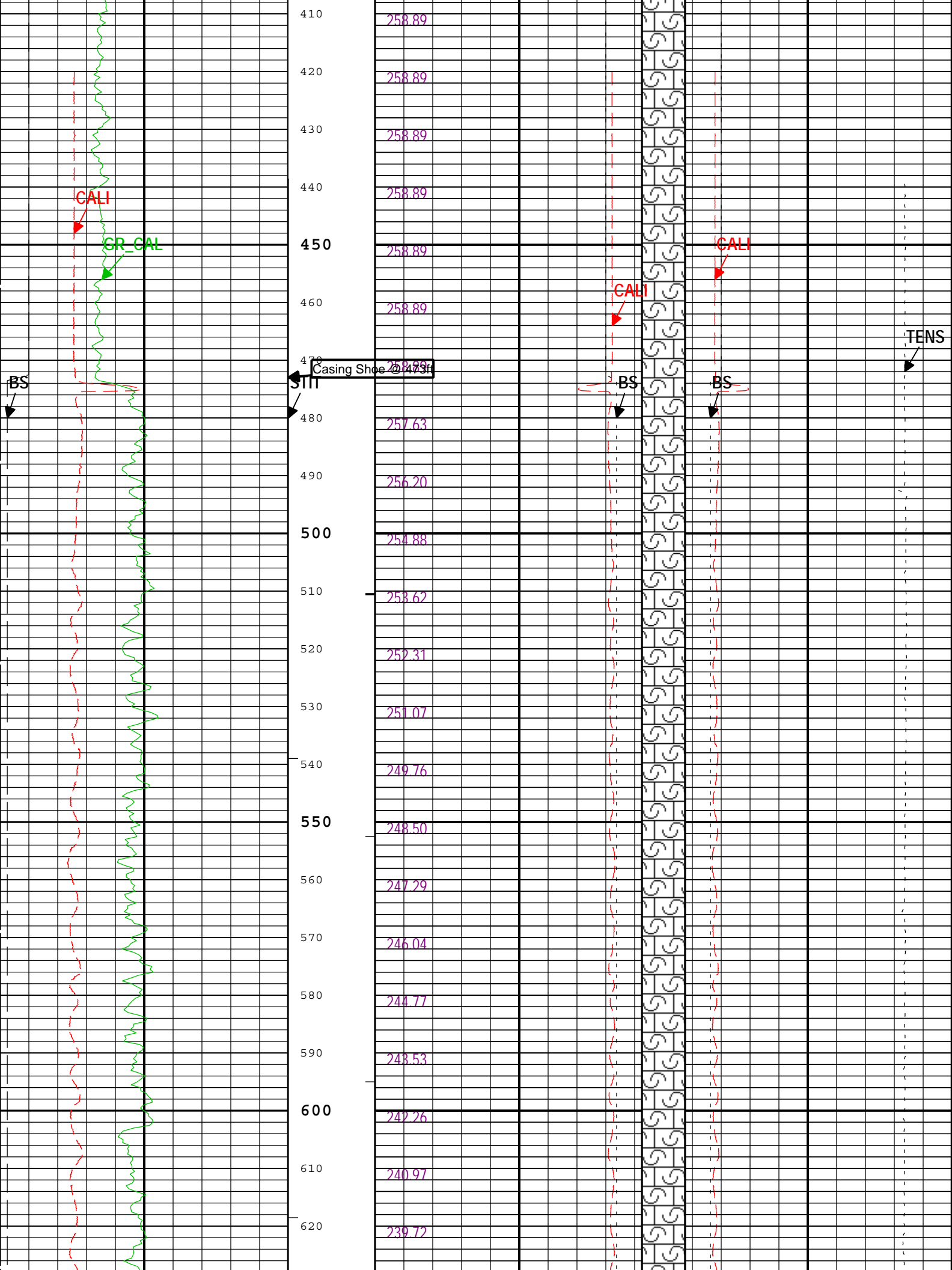
Integration Summary

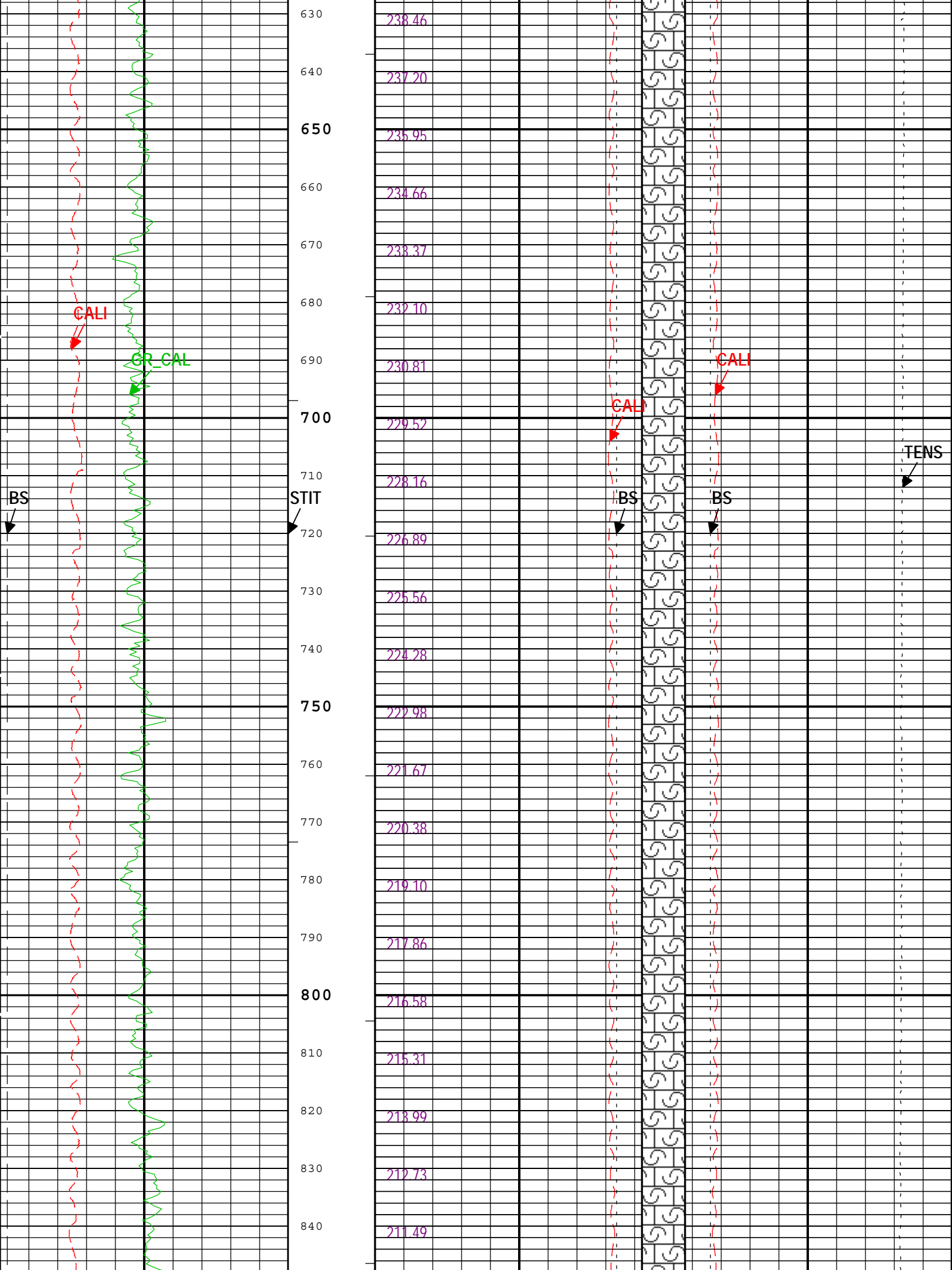
Output Channel(s)	Output Description	Input Parameter	Output Value	Unit
ICV	Integrated Cement Volume	GCSE_UP_PASS, FCD	258.84	ft3
IHV	Integrated Hole Volume	GCSE_UP_PASS	509.28	ft3

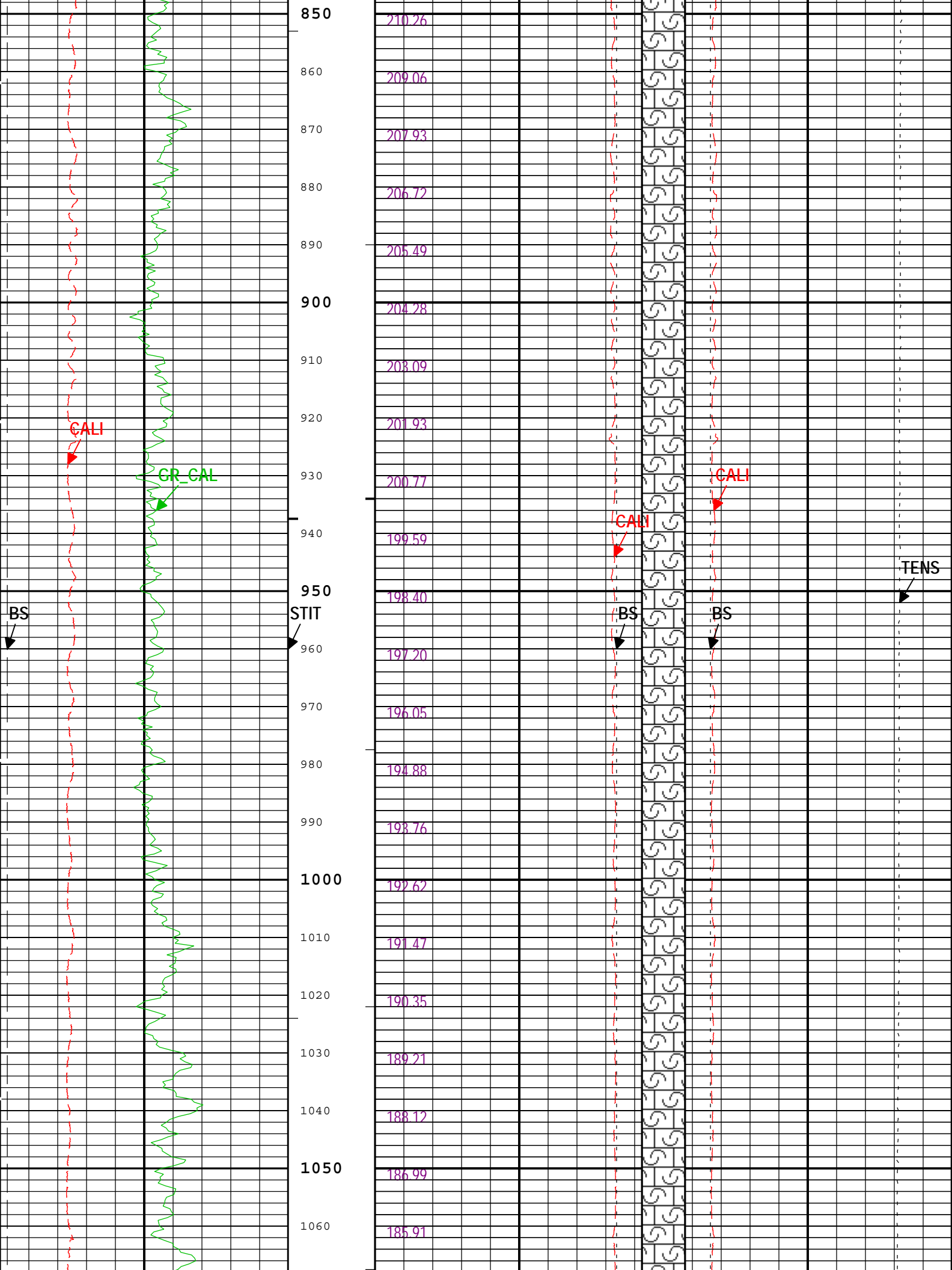
Software Version

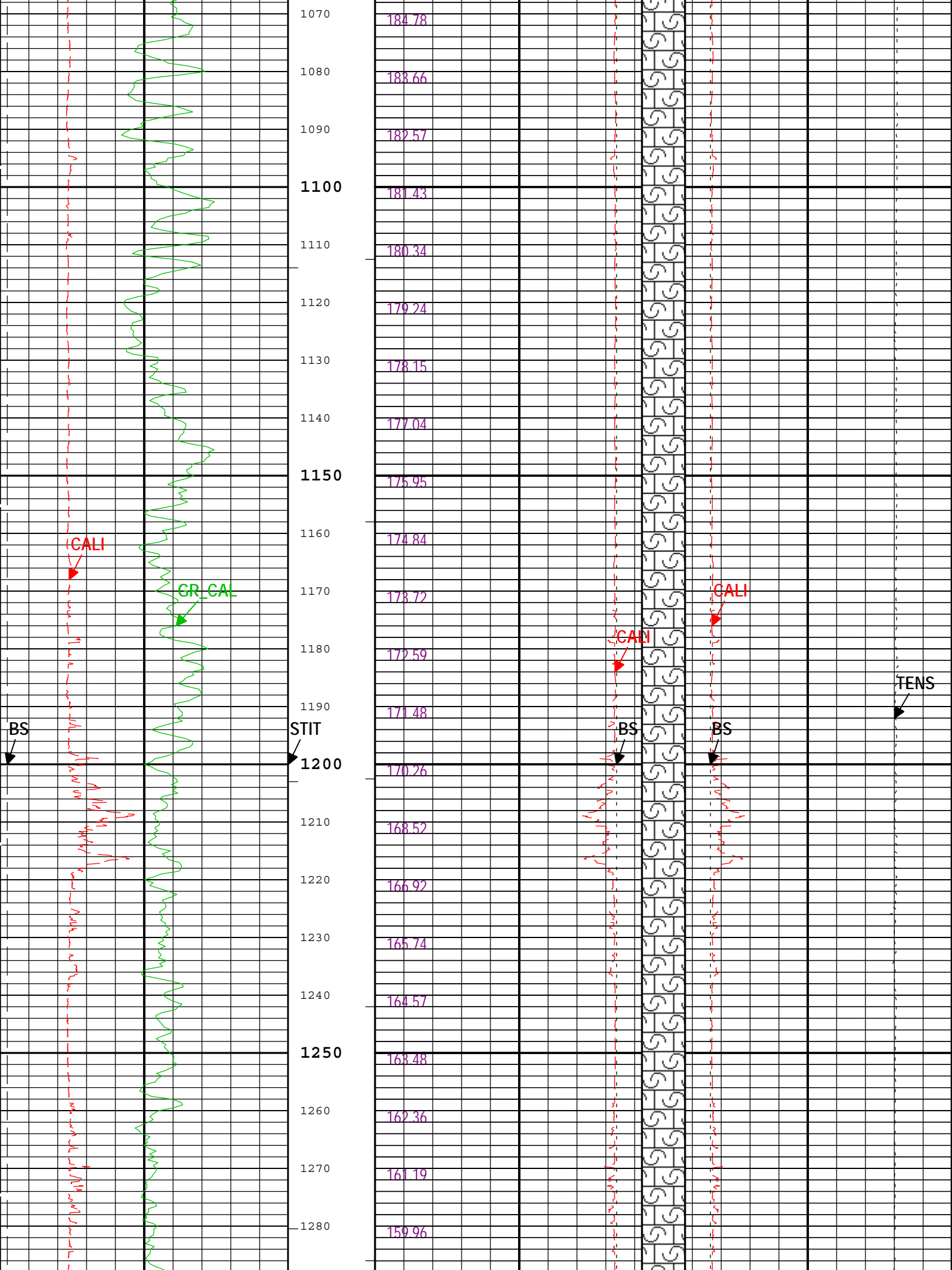
Acquisition System	Version
MaxWell	3.1.9755.0
Application Patch	SP-20130325-3.1.9755.1799

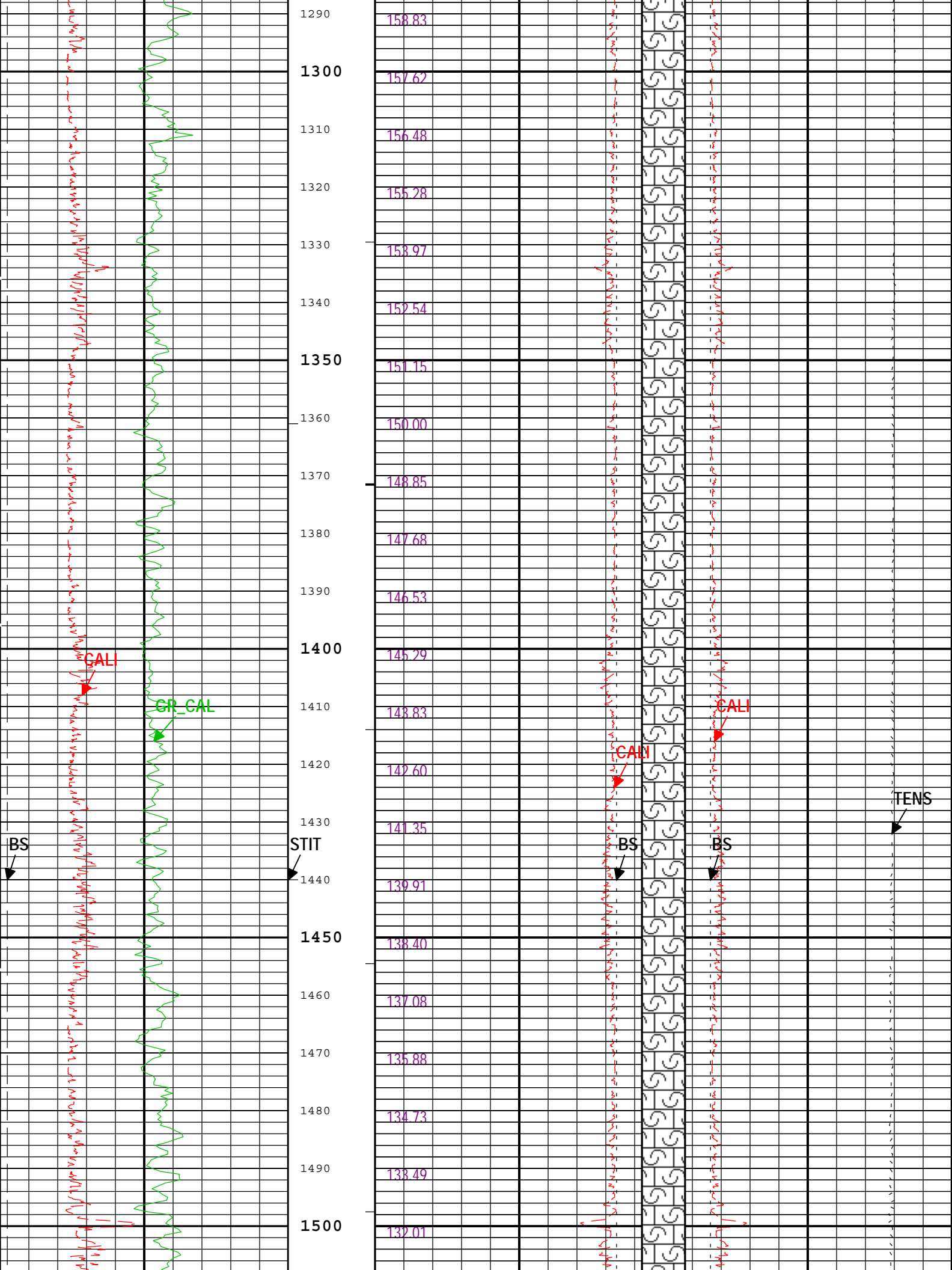
Computation	Description	Version
-------------	-------------	---------

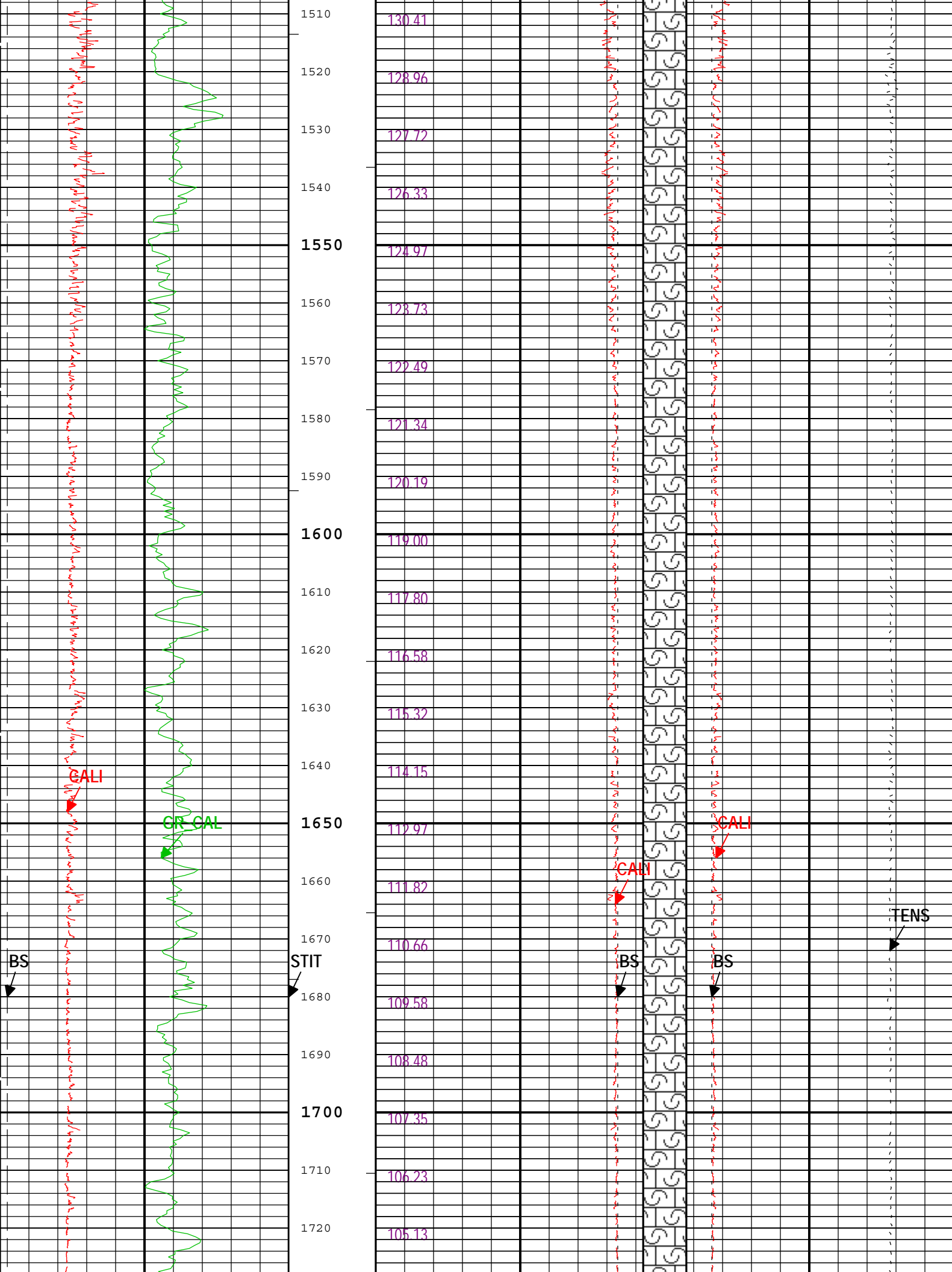


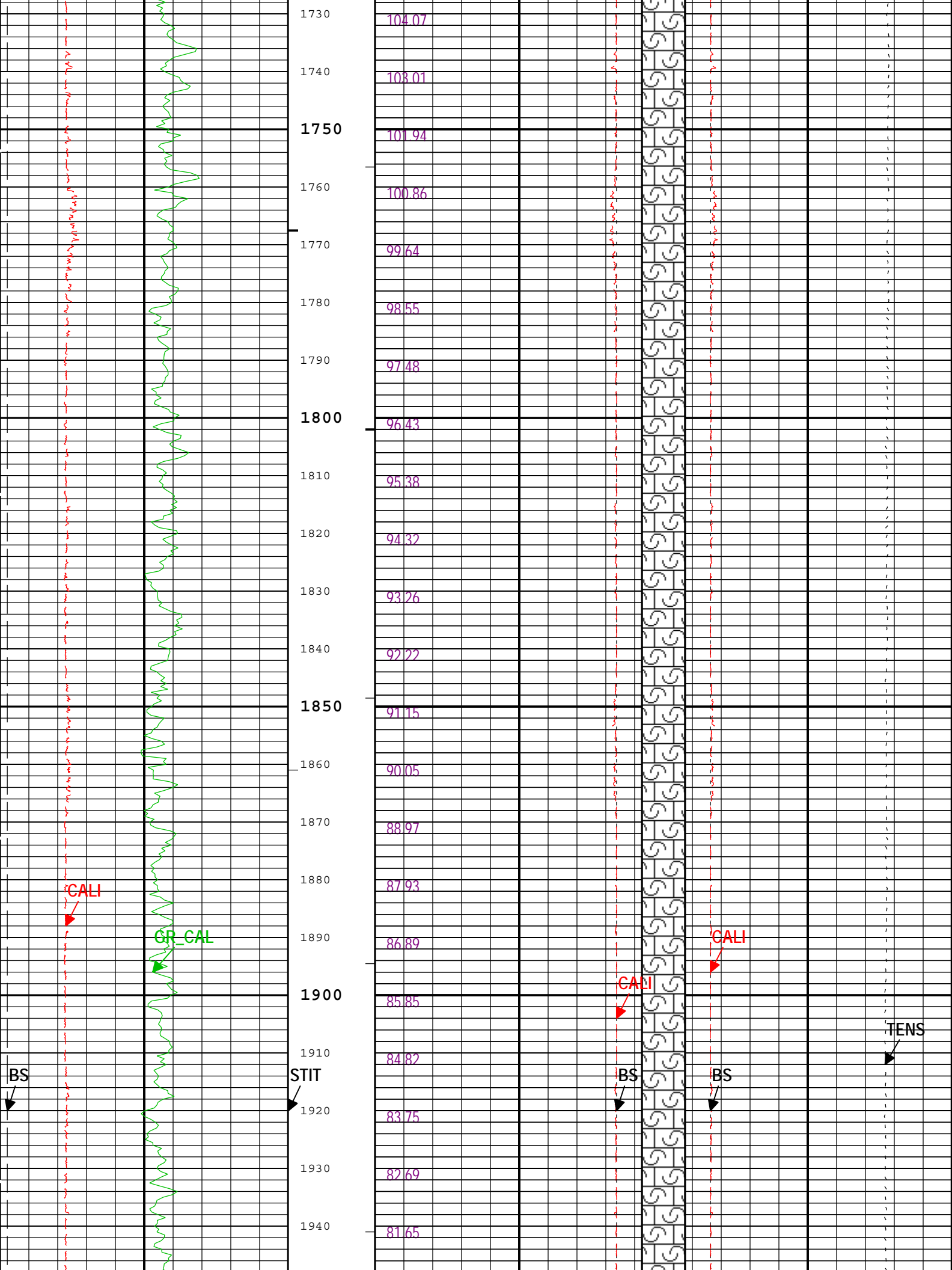


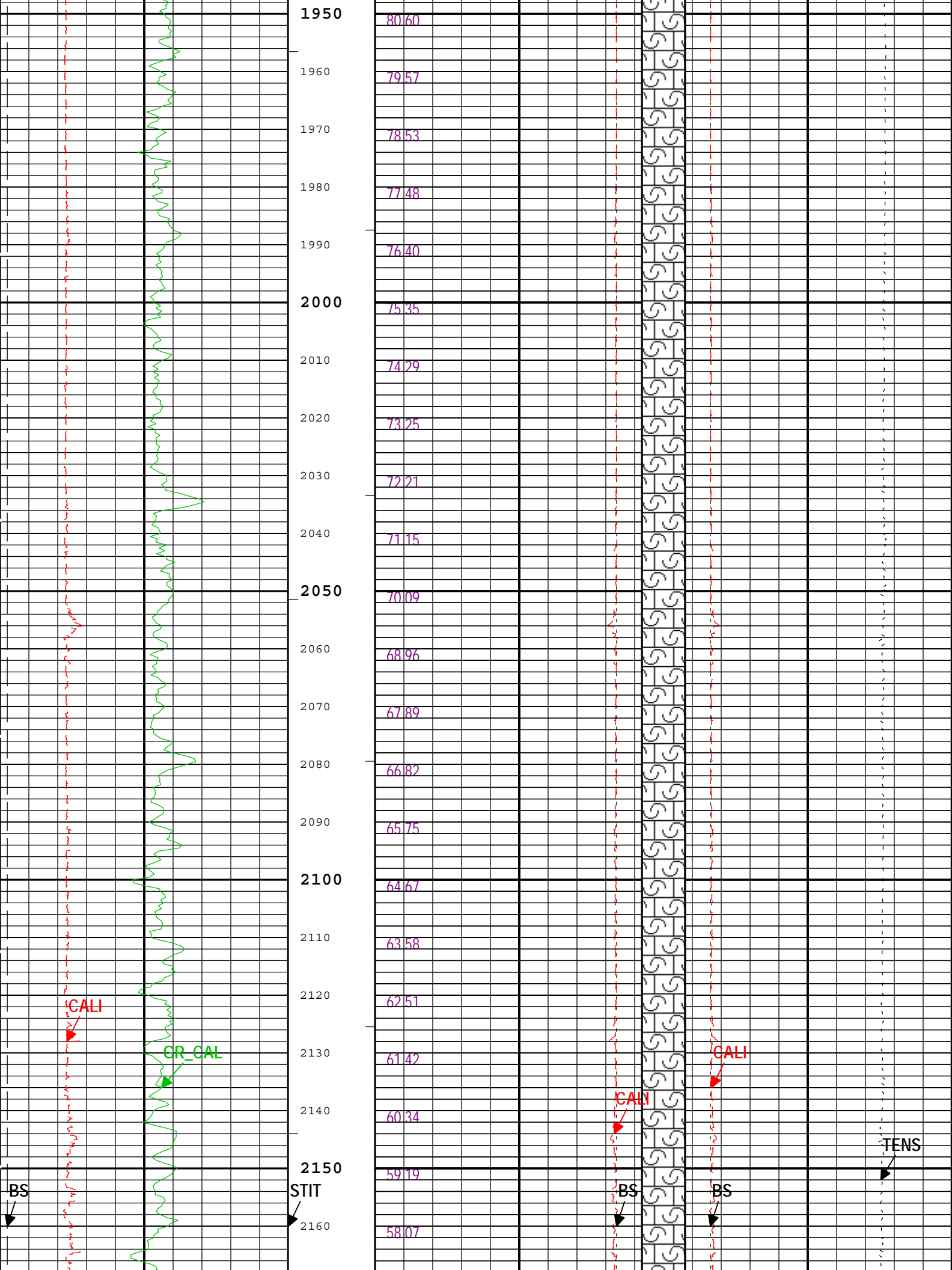


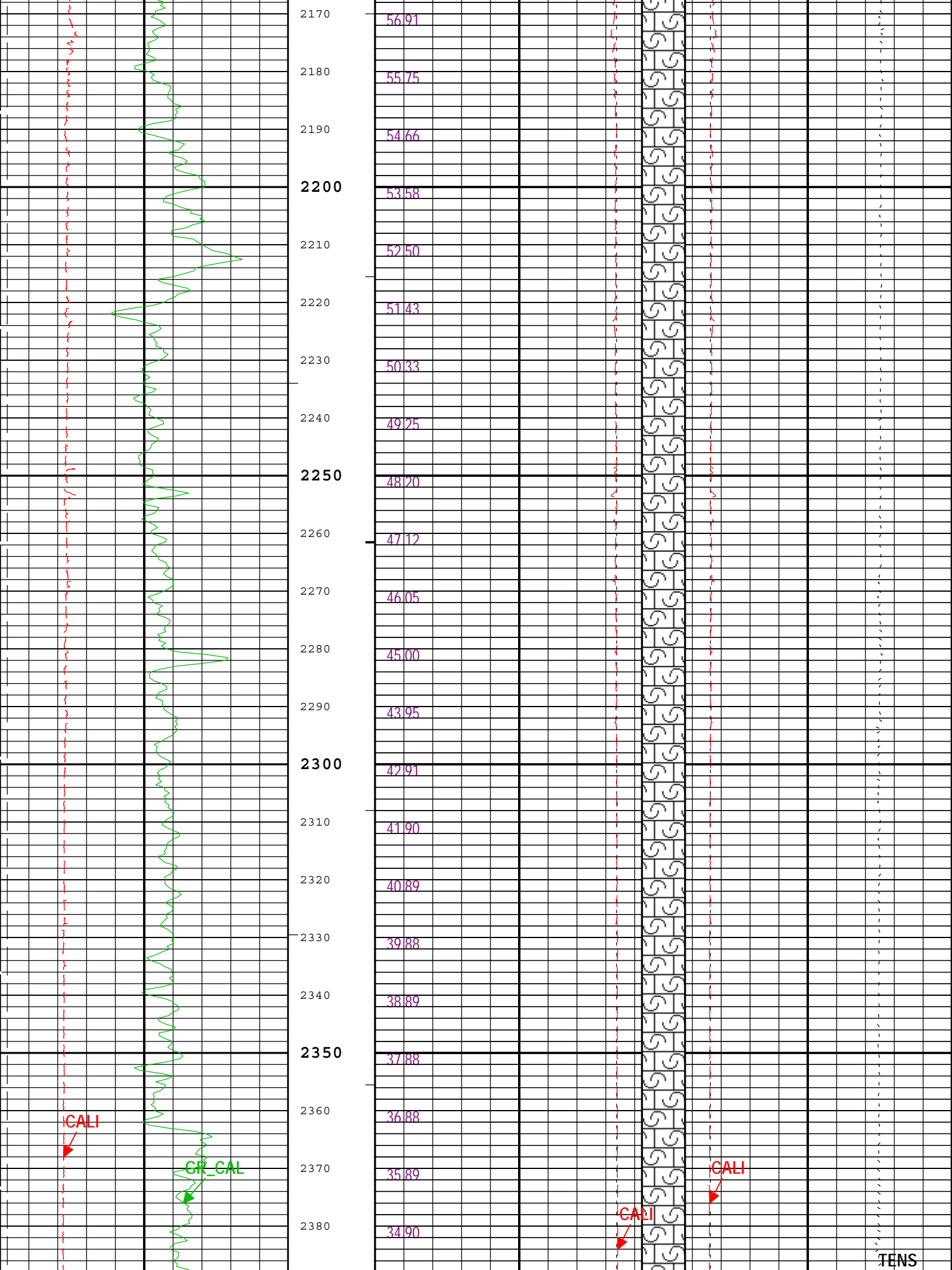


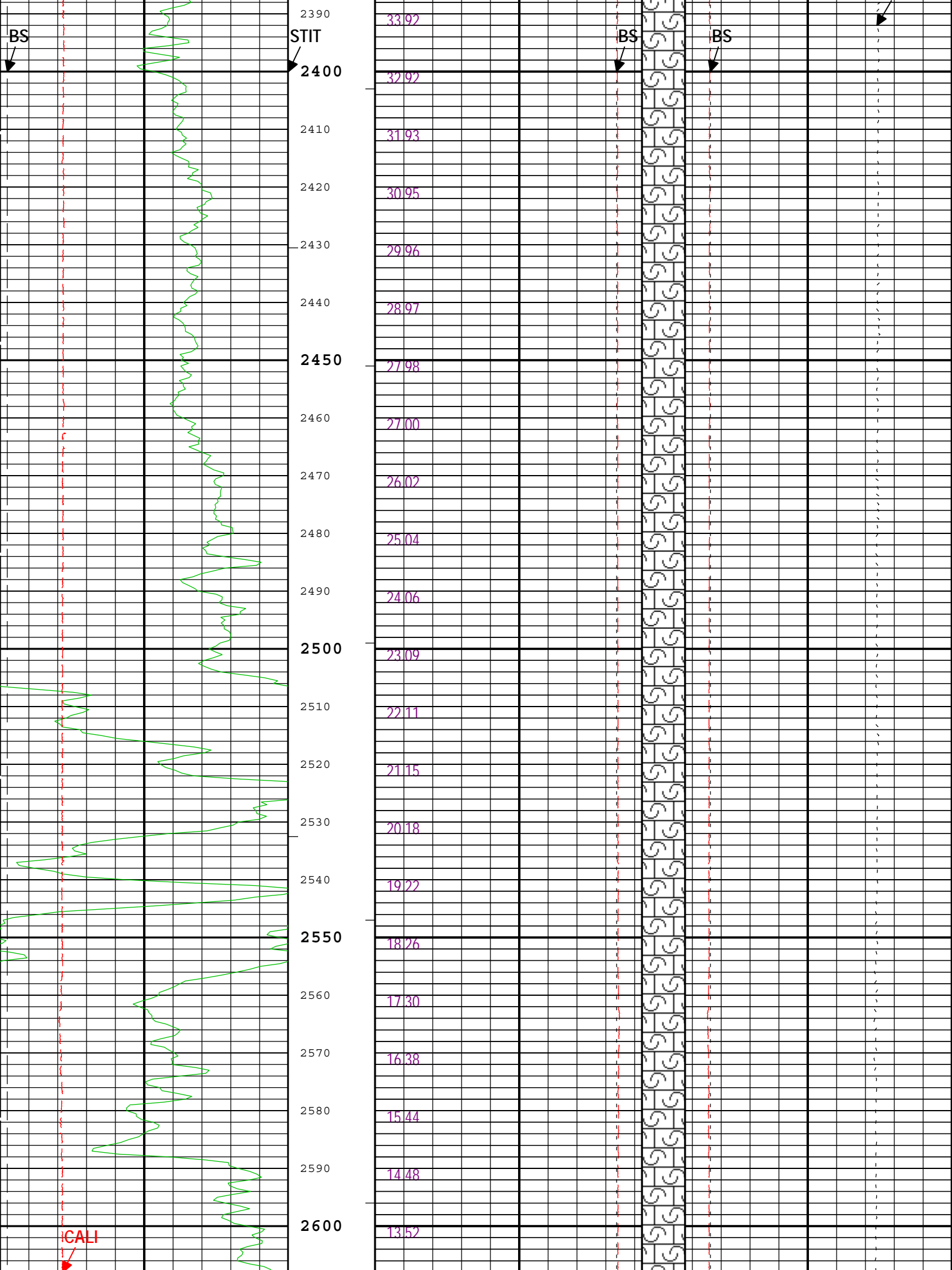


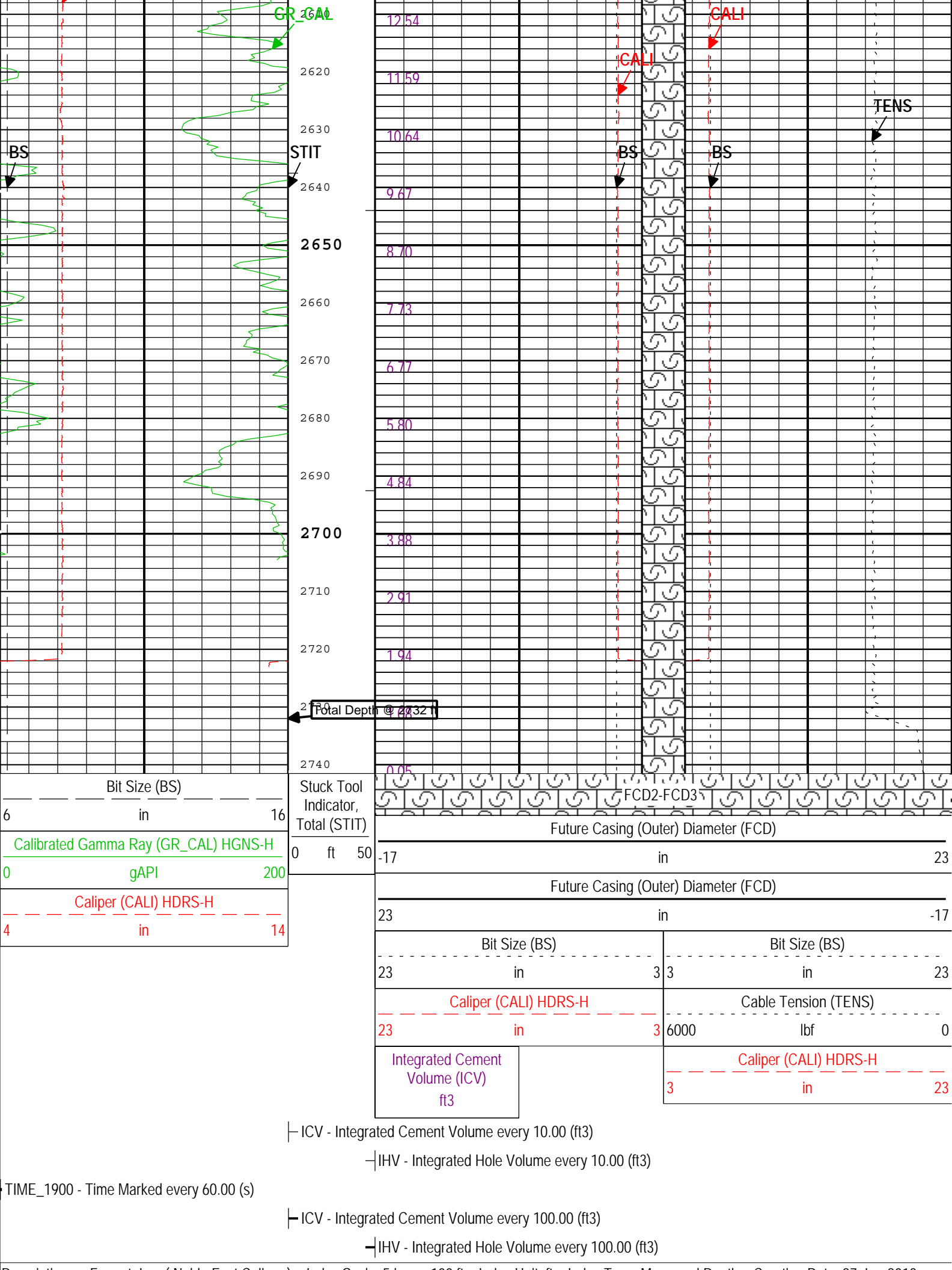













Channel Processing Parameters				
Parameter	Description	Tool	Value	Unit
BHS	Borehole Status (Open or Cased Hole)	Borehole	Open	
BS	Bit Size	WLSESSION	Depth Zoned	in
CALI_SHIFT	CALI Supplementary Offset	HDRS-H	0	in
CBLO	Casing Bottom (Logger)	WLSESSION	473	ft
CSODDRL	Casing Outer Diameter - Zoned along driller depths	WLSESSION	7	in
DC_MODE	Depth Correction Mode	DepthCorrection	Real-time	
FCD	Future Casing (Outer) Diameter	WLSESSION	4.5	in
GCSE_DOWN_PASS	Generalized Caliper Selection for WL Log Down Passes	Borehole	BS	
GCSE_UP_PASS	Generalized Caliper Selection for WL Log Up Passes	Borehole	CALI	
TD	Total Measured Depth	Borehole	2732	ft

Depth Zone Parameters			
Parameter	Value	Start (ft)	Stop (ft)
BS	0	383	473
BS	6.25	473	2741.5
All depth are actual.			

Tool Control Parameters				
Parameter	Description	Tool	Value	Unit
MAX_LOG_SPEED	Toolstring Maximum Logging Speed	WLSESSION	3600	ft/h

Company:	Omimex Petroleum, Inc			
Well:	Bledsoe 13x-2-5-45			
Field:	Ballyneal			
County:	Yuma			
State:	Colorado			

Platform Express
Caliper
Cement Volume