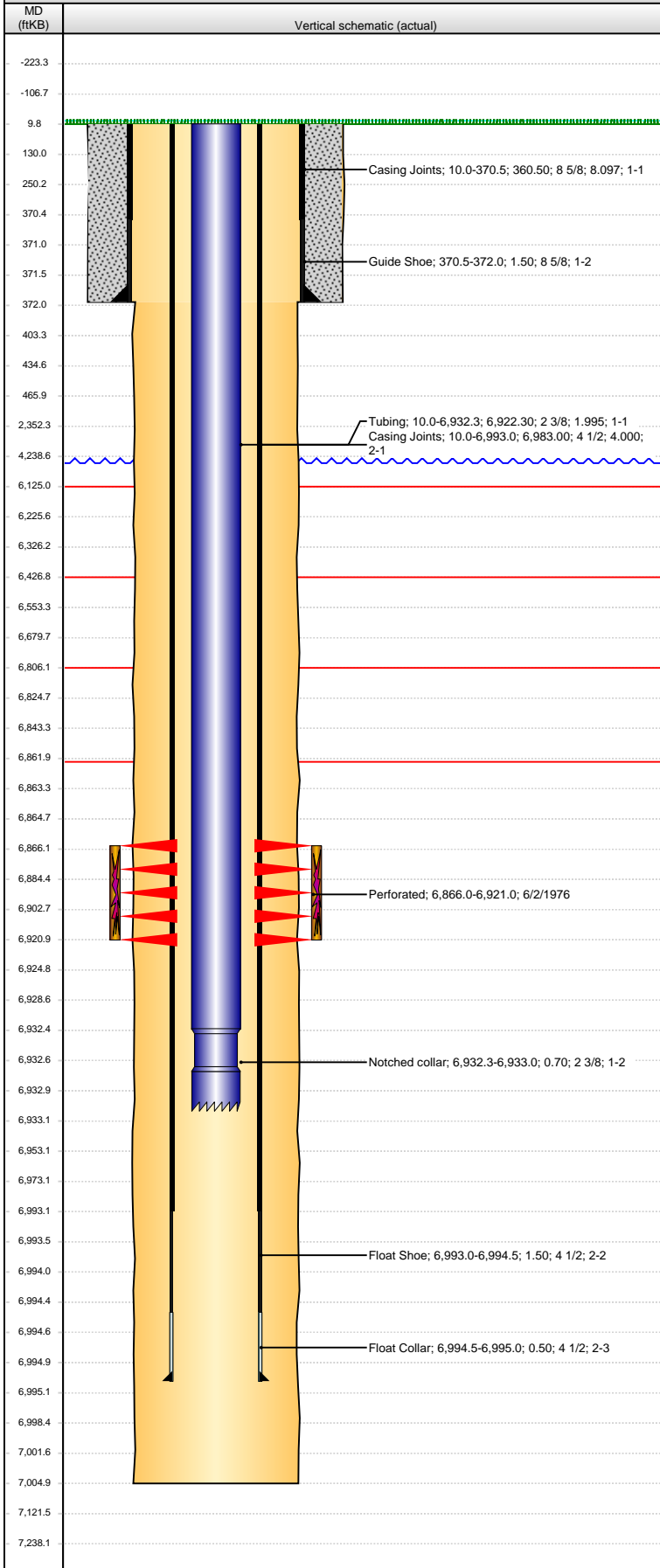


Well Name: STATE 41-05

VERTICAL - ORIGINAL HOLE, 8/14/2013 9:05:04 AM



Well Header

API	Business Unit	District	Well Config
05-123-08669	WATTENBERG	15	VERTICAL
Original KB Elevation (ft)	KB - GL / MSL (ftKB)	Spud Date	P & A Date
4,710.00	10.00	4/30/1976	

Comment
NO CBL AVAILABLE IN FILE OR COGCC; THEREFORE, PROD CEMENT HAS NO DEPTHS ENTERED

Directions To Well

Congressional Location

Quarter 1	Quarter 2	Quarter 3	Quarter 4	Section	Township	Twnshp N...	Range	Rng E/W Dir
		NE	NE	5	2	N	62	W

Bottom Hole Location

North-South Distance (ft)	From N or S Line	East-West Distance (ft)	From E or W Line

Plug Back Total Depths

Date	Depth (ftKB)	Method	Com

Wellbore Sections

Section Des	Size (in)	Act Top (ftKB)	Act Btm (ftKB)
SURFACE	12 1/4	10.0	372.0
PRODUCTION	7 7/8	372.0	7,005.0

Zone Statuses

Zone Name	Status Date	Status	Job
J SAND	6/29/1976	PR	DRILLING/COMPLETION - ORIGINAL, 5/8/1976 00:00

Casing Strings

Surface, 372.0ftKB

Casing Description	Run Date	OD (in)	Wt/Len (l...)	Grade	Top (ftKB)	MD (ftKB)
Surface	4/30/1976	8 5/8	24.00	?	10.0	372.0

Production, 6,995.0ftKB

Casing Description	Run Date	OD (in)	Wt/Len (l...)	Grade	Top (ftKB)	MD (ftKB)
Production	5/9/1976	4 1/2	11.60	?	10.0	6,995.0

Cement

Description	Top Depth (ftKB)	Bottom Depth (ftKB)
SURFACE CASING CEMENT	10.0	372.0
Description	Top Depth (ftKB)	Bottom Depth (ftKB)
PRODUCTION CASING CEMENT		

Tubing Components

Item Des	OD (in)	Wt (lb/ft)	Grade	Jts	Len (ft)	Btm (ftKB)	Btm (TVD) (ftKB)
Tubing	2 3/8	4.60	J-55	225	6,922.30	6,932.3	
Notched collar	2 3/8				0.70	6,933.0	

Perforation Data

Zone	Bnch/St g	Entered Shot Total	Top (ftKB)	Btm (ftKB)	Date
J SAND, ORIGINAL HOLE			6,866.00	6,921.00	6/2/1976

Stimulations & Treatments

Date	Zone	Primary Job Type
6/3/1976	J SAND, ORIGINAL HOLE	DRILLING/COMPLETION - ORIGINAL
Technical Result	Tech Result Details	Tech Result Note

Comment

Other In Hole

Run Date	Des	OD (in)	Top (ftKB)	Btm (ftKB)

Logs

Date	Type	Top (ftKB)	Btm (ftKB)
5/8/1976	BOREHOLE IMAGER	3,800.0	6,966.0
5/8/1976	COMPENSATED DENSITY	3,800.0	6,968.0
5/8/1976	INDUCTION	374.0	6,968.0