

Scale 1:240 (5"=100') Imperial
Measured Depth Log

Well Name: Underhill 28N-17HZ
Location: Section 17, T1N, R67W, Weld County, CO.
License Number: API# 05-123-36917
Spud Date: 31 July 2013
Surface Coordinates: 849' FSL & 1520' FEL SW SE Sec 17 T1N R67W
Lat: 40° 02' 46.04" N; Long: -104° 54' 37.76" W
Bottom Hole Coordinates: 433' FNL & 2,308' FEL NWNE Sec 17 T1N R67W
Lat: 40° 3' 25.4154" N; Long: -104° 54' 47.88" W
Ground Elevation (ft): 5112'
Logged Interval (ft): 7100' To: 12,120'
Formation: Lower Pierre Shale, Niobrara Chalks.
Type of Drilling Fluid: Water Base Mud

Region: Wattenberg
Drilling Completed: 08 August 2013

K.B. Elevation (ft): 5128'
Total Depth (ft): 12,120'

Printed by HORIZONTAL.LOG from WellSight Systems 1-800-447-1534 www.WellSight.com

OPERATOR

Company: Anadarko/Kerr-McGee Oil & Gas Onshore LP
Address: Granite Tower - 1099 18th St, Ste 1800
Denver, CO 80202
CO Geologist, Tom Birmingham

GEOLOGIST

Name: Jack R. Rogers & Robert Nordeck
Company: Goolsby Brothers & Assoc. (GBA), Inc. (www.goolsbybrothers.com)
Address: 575 Union Blvd.
Suite 208,
Lakewood CO. 80228

E-logs

MWD GR: 7111'-12,049'
MWD Resistivity: 8170'-12,056'

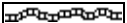

Casing

9 5/8" Surface Casing set @ 944'
7" Intermediate Casing set @ 8159'
4 1/2" Production Liner to be set to 12110' TD


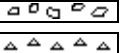
Comments

1) Drilling Contractor: Xtreme Drilling, Rig # 22
Rig Manager: Mike Headley / Tyler Humphrey
2) Company Man: Dave Cornett / Hal Curlett/
Scott Hancock / Luke Rains
3) Well Site Geologists: Goolsby Brothers & Assoc. :
Jack Rogers / Robert Nordeck
4) Mud Company : AES Drilling Fluids,
Mud Engineer: Sam Evans
5) Directional Drilling: Sperry / Halliburton
Drillers: Randy Bernatow,
MWD: Clay Wass / Caleb Jones
6) Gas Equipment: Mudlogging Systems Inc.
by Terra Services
Redbox # ML-198 w/ Ratcliff Agitator



ROCK TYPES




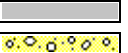
Anhy
Bent





Brec
Cht



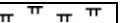

Clyst
Coal




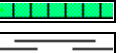
Oil sat.
Congl




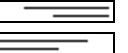
Dol
Gyp





Lmst
Mrlst





Salt
Shale




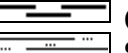
Shcol
Shgy



Ss
Sltst



Ss
Chalk



Carb sh
Sltly sh

ACCESSORIES

MINERAL





Carb
Chtdk
Chtlt
Dol
Feldspar
Ferrpel
Ferr
Glau



Gyp
Hvymin
Kaol
Marl
Minxl
Nodule
Phos
Pyr



Salt
Sandy
Silt
Sil
Sulphur
Tuff

FOSSIL





Coral
Crin
Echin
Fish
Foram
Fossil
Gastro
Oolite



Ostra
Pelec
Pellet
Pisolite
Plant
Strom

STRINGER





Ls
Mrst
Sltstrg
Ssstrg

TEXTURE





Cryxln
Earthy
Finexln
Grainst
Lithogr
Microxln
Mudst
Packst



Wackest

OIL SHOWS

- Even
- Spotted



Ques



Dead



Vspotty



near even

POROSITY TYPE

- Earthy
- Fenest



Fracture



Inter



Moldic

OTHER SYMBOLS



Organic



Pinpoint



Vuggy

ROUNDING

- Rounded
- Subrnd



Subang



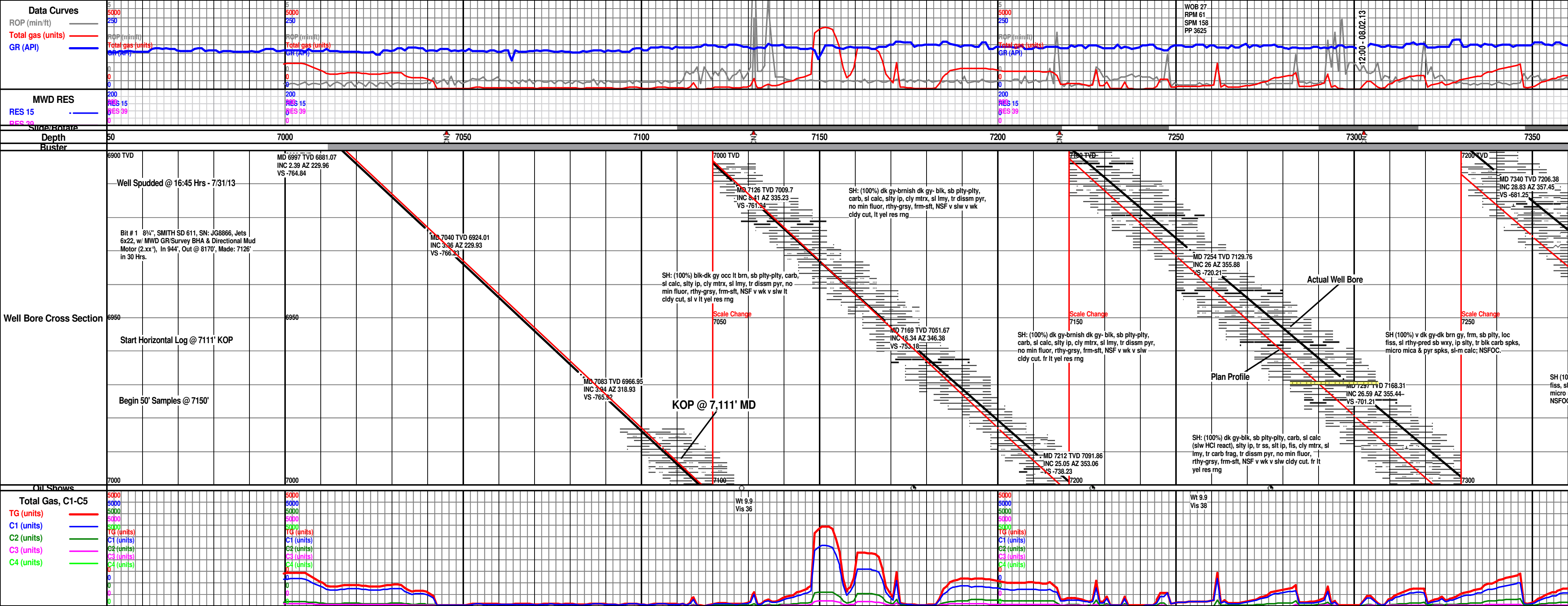
Angular

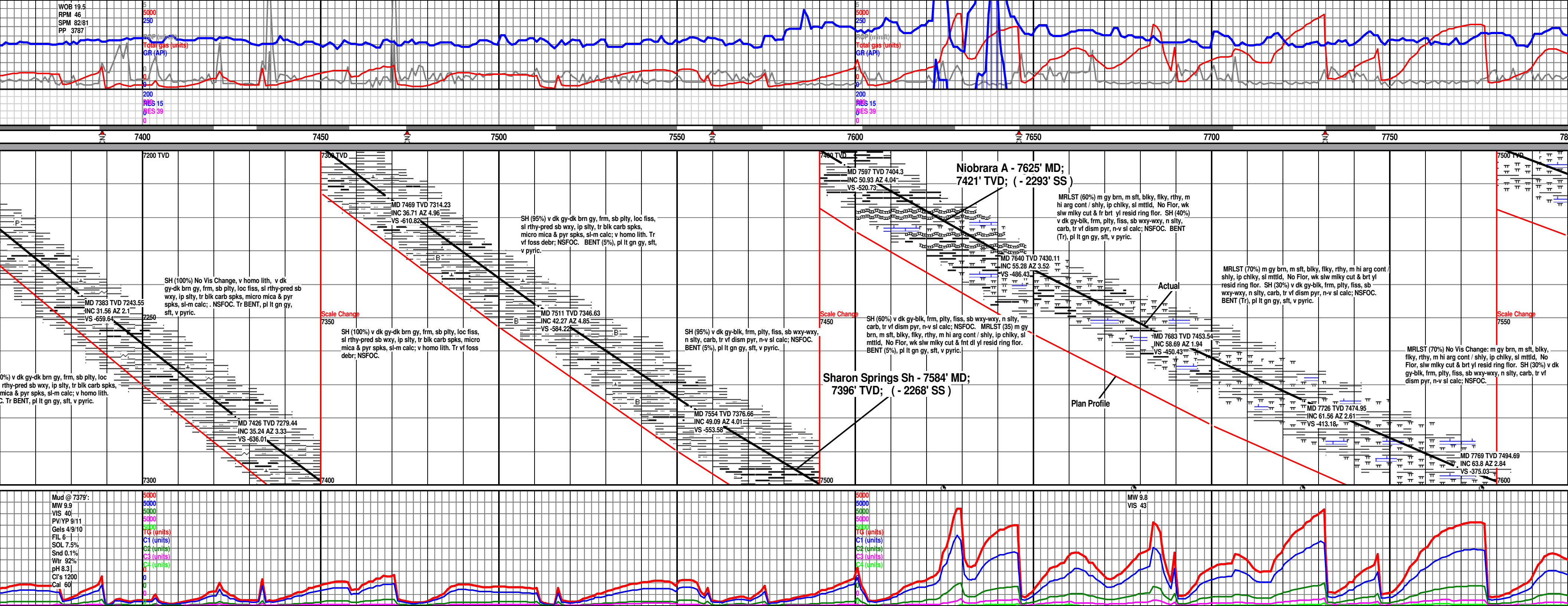
SORTING

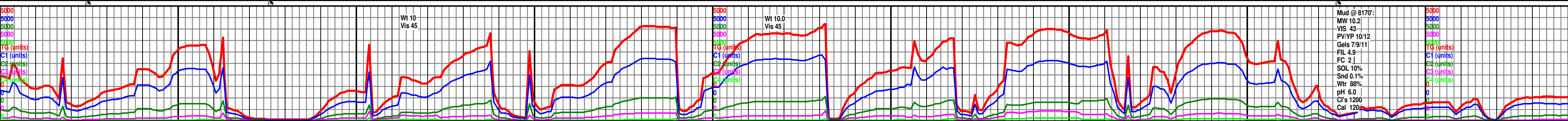
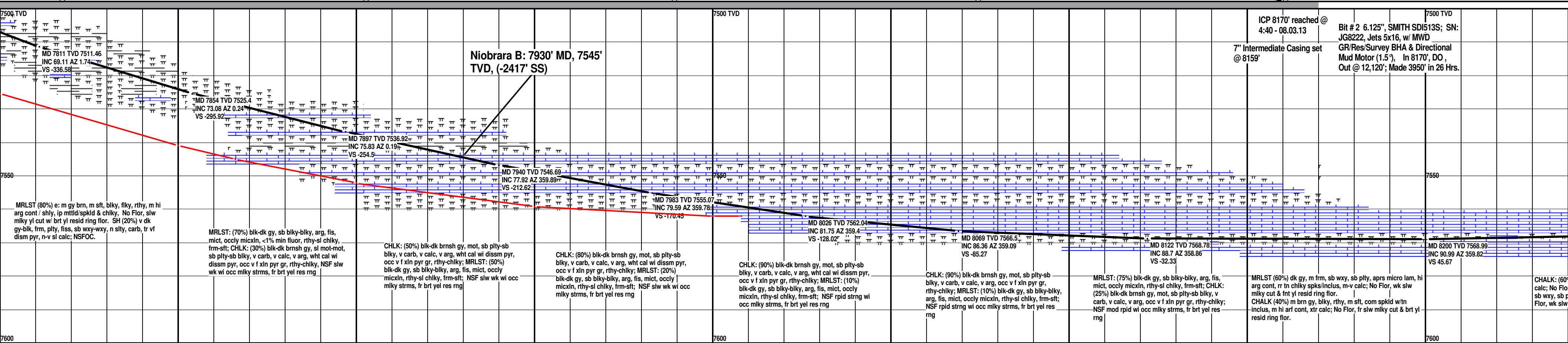
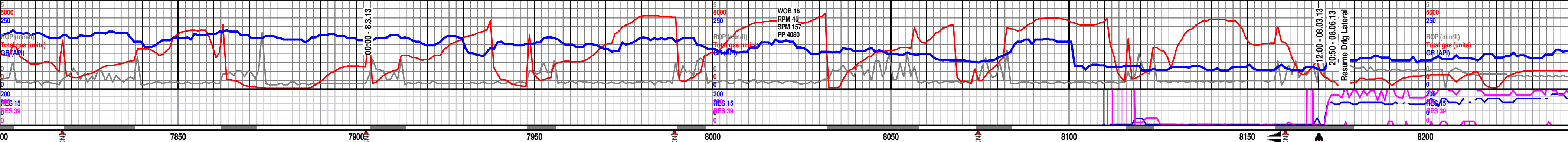
- Well
- Moderate

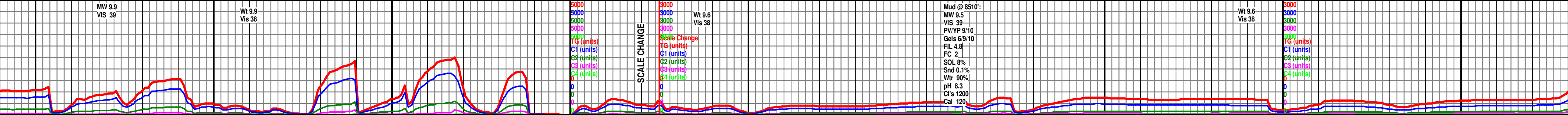
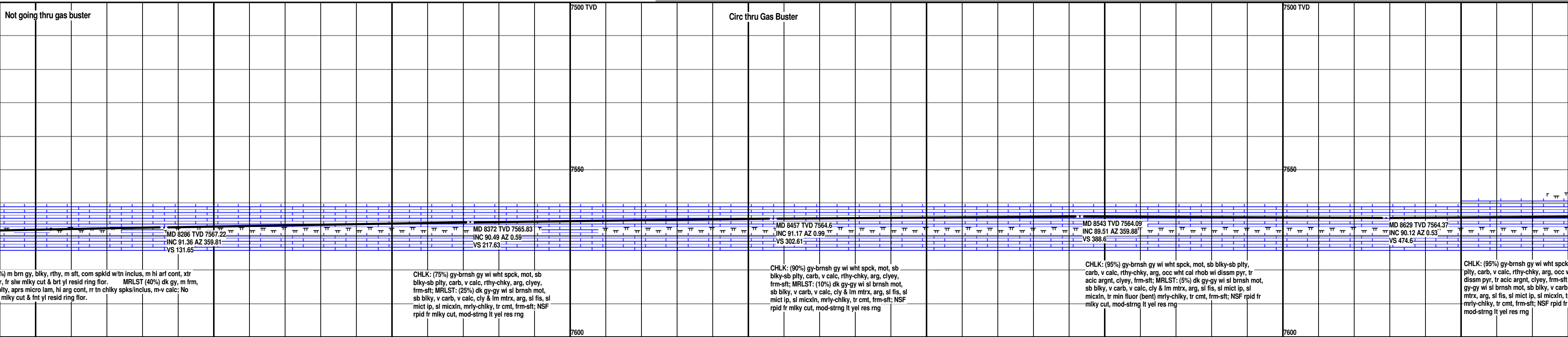
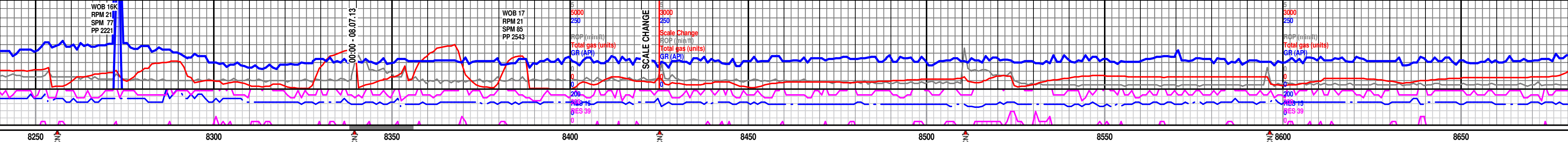


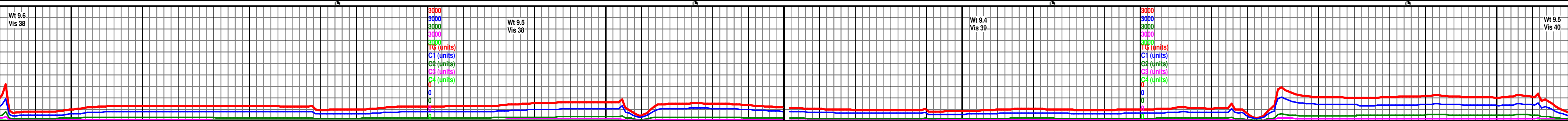
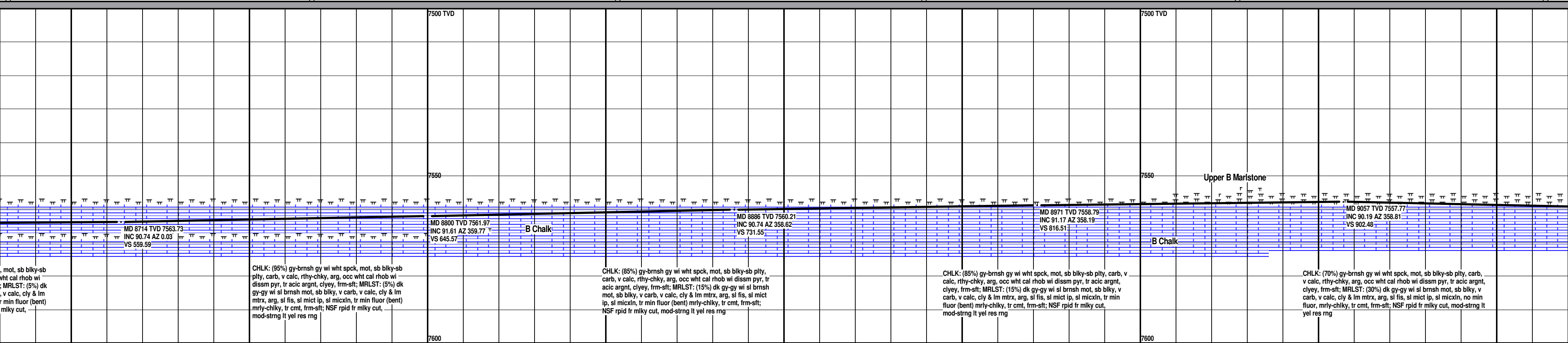
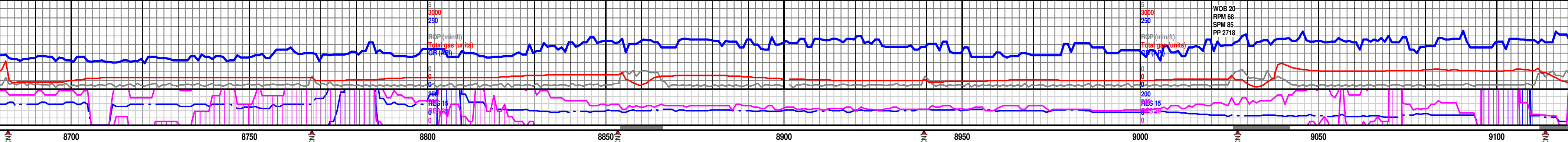
Poor

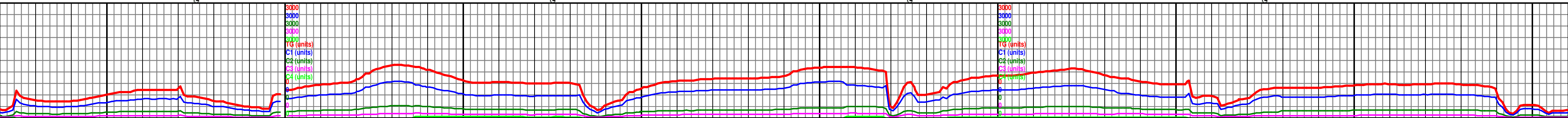
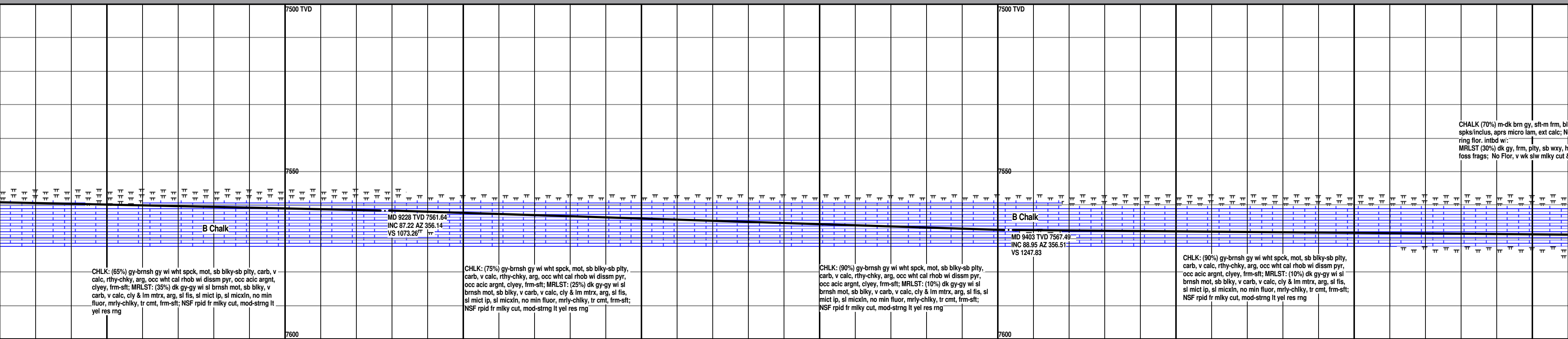
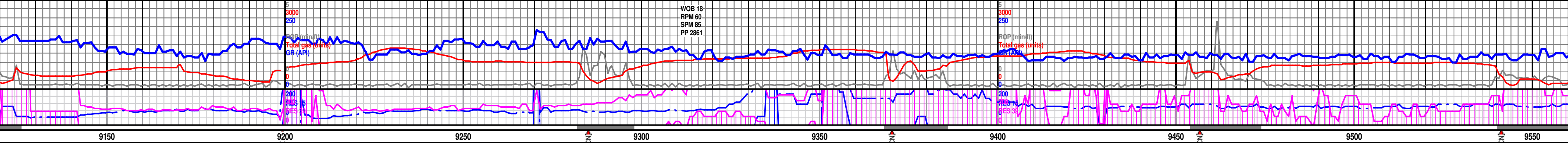


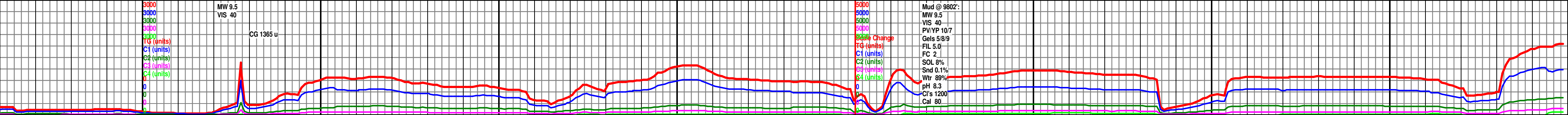
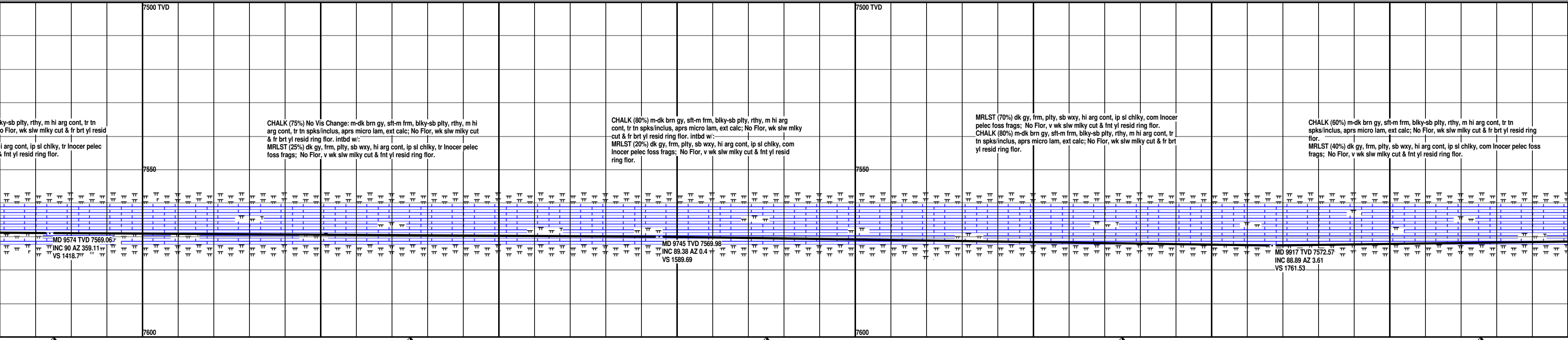
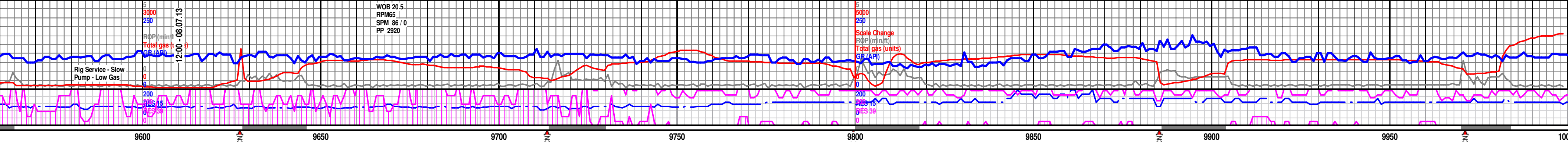


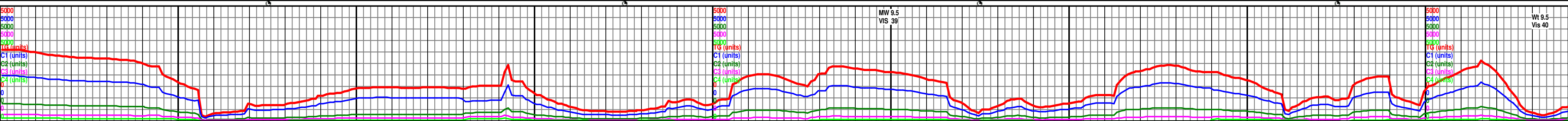
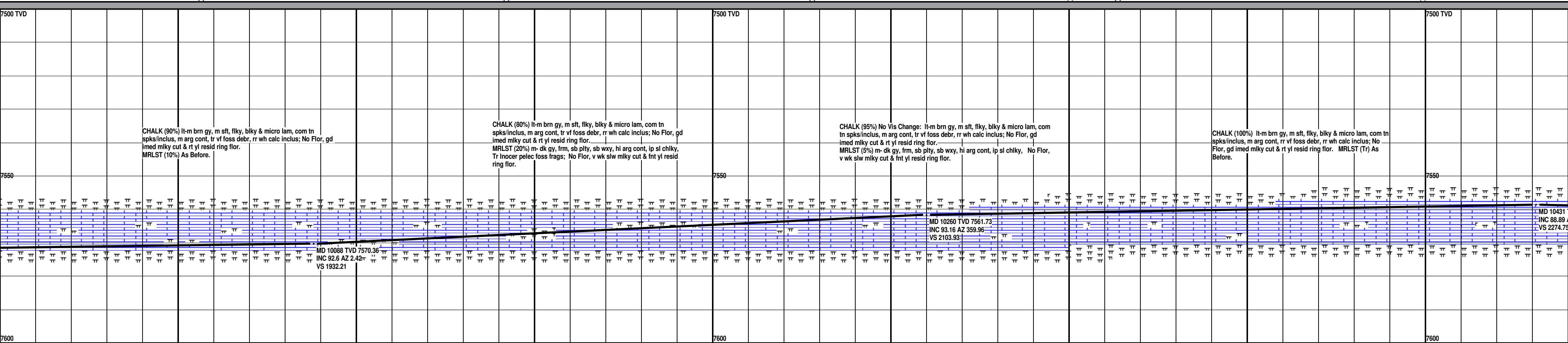
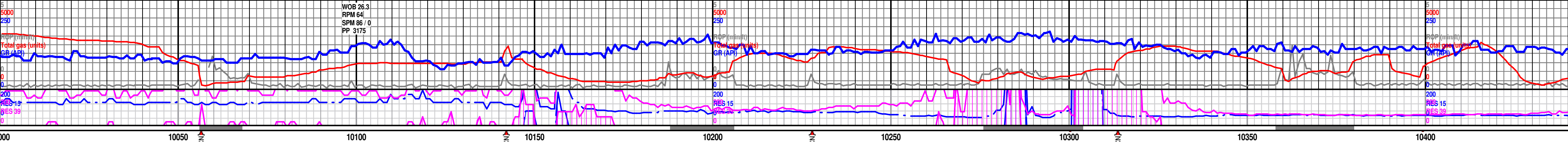


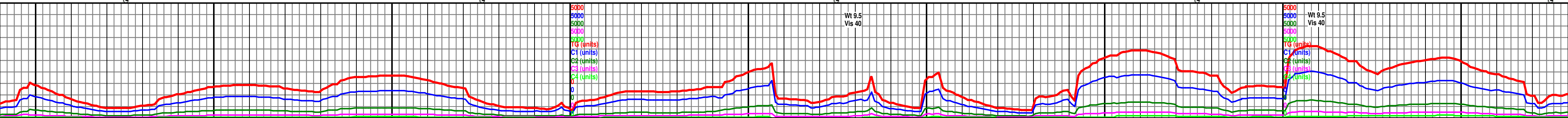
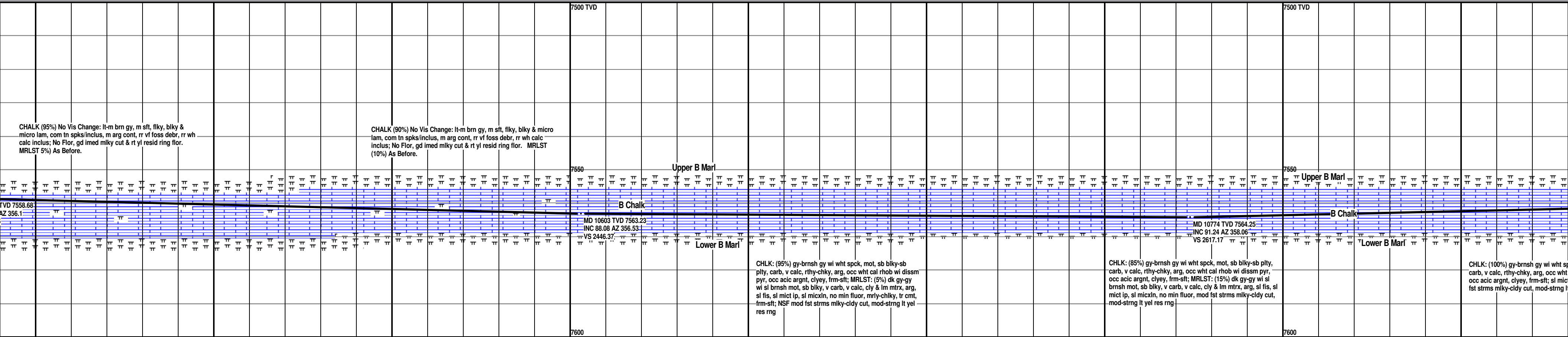
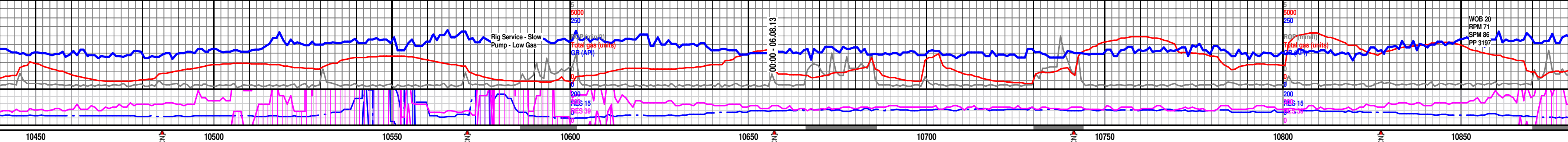


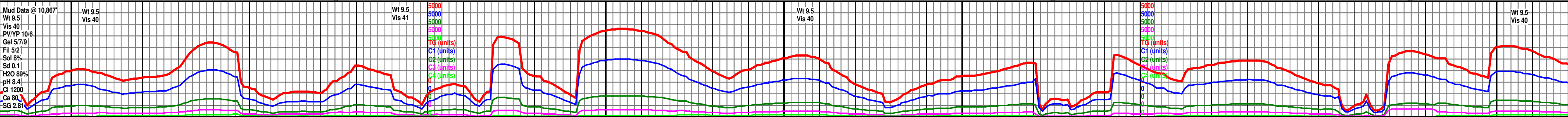
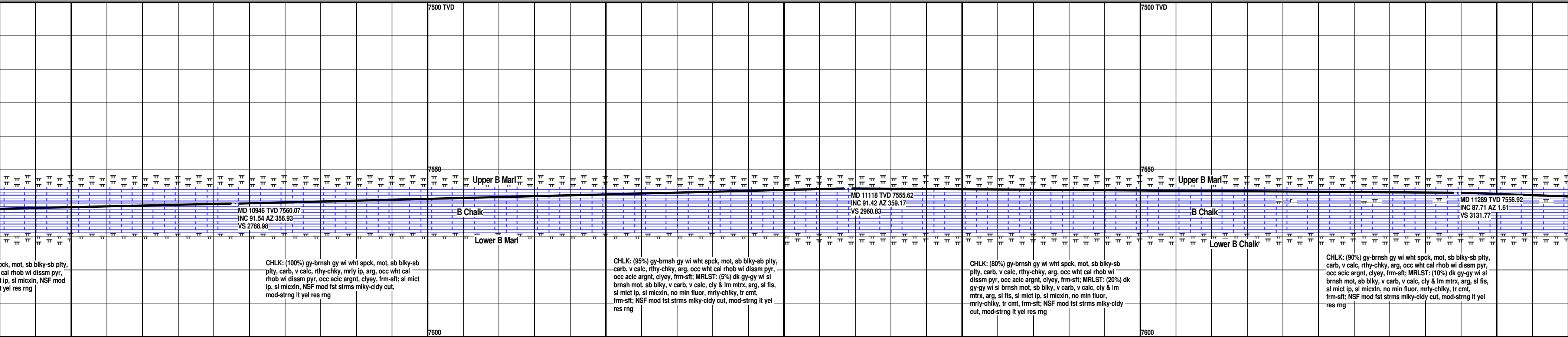
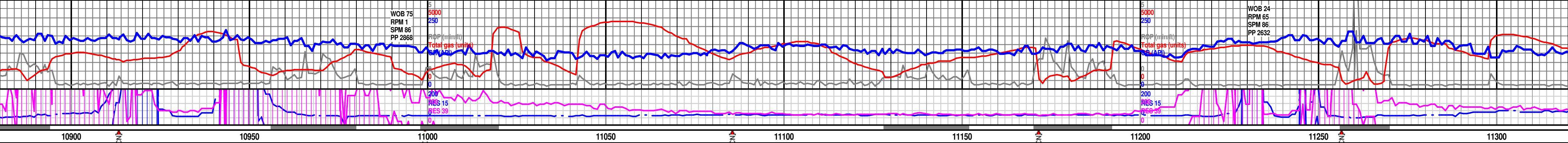


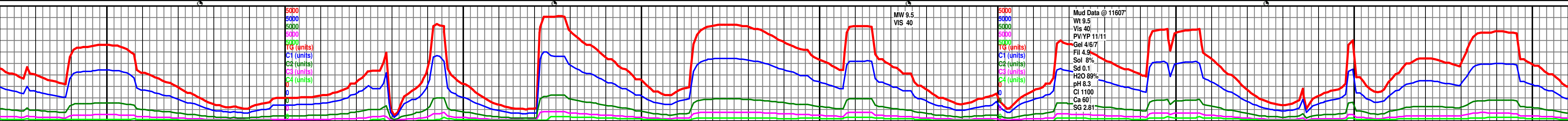
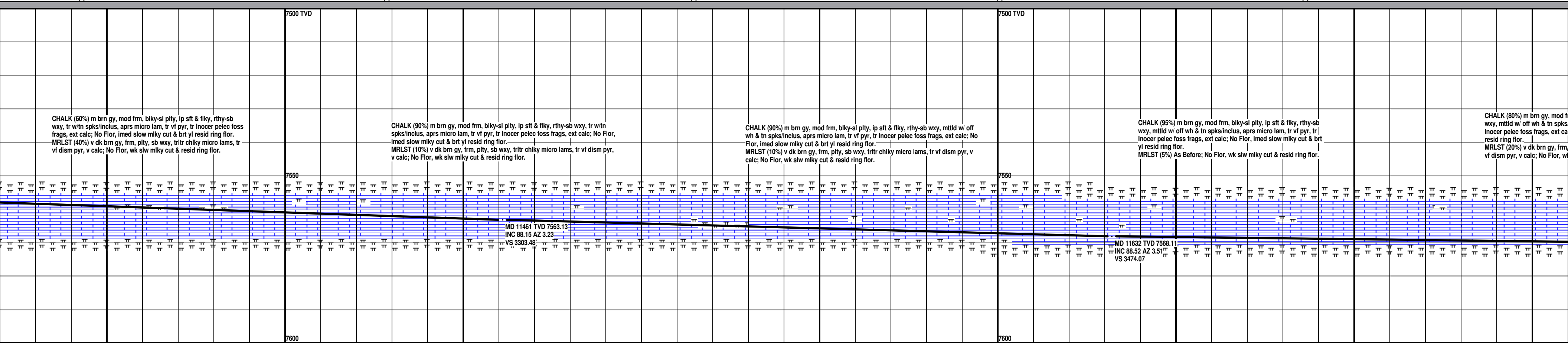
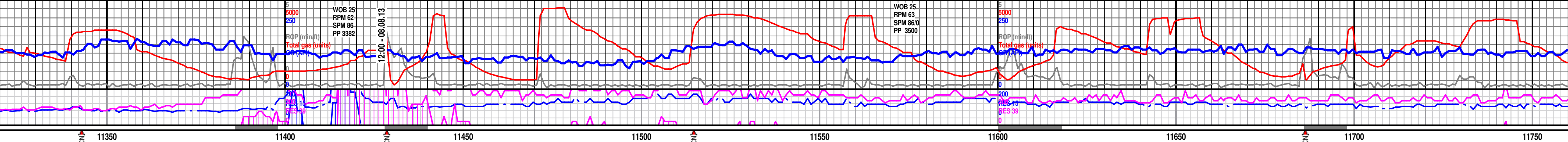


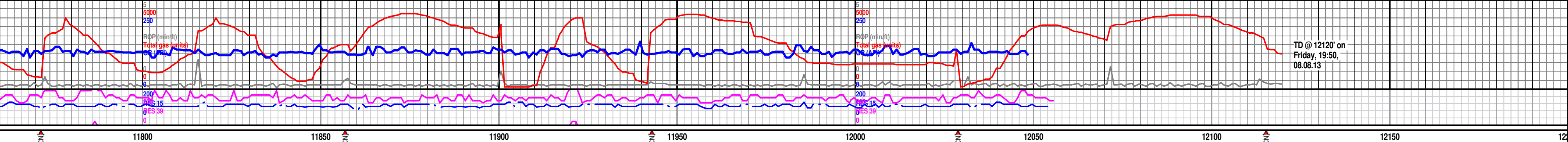












TD @ 12120' on
Friday, 19:50,
08.08.13

