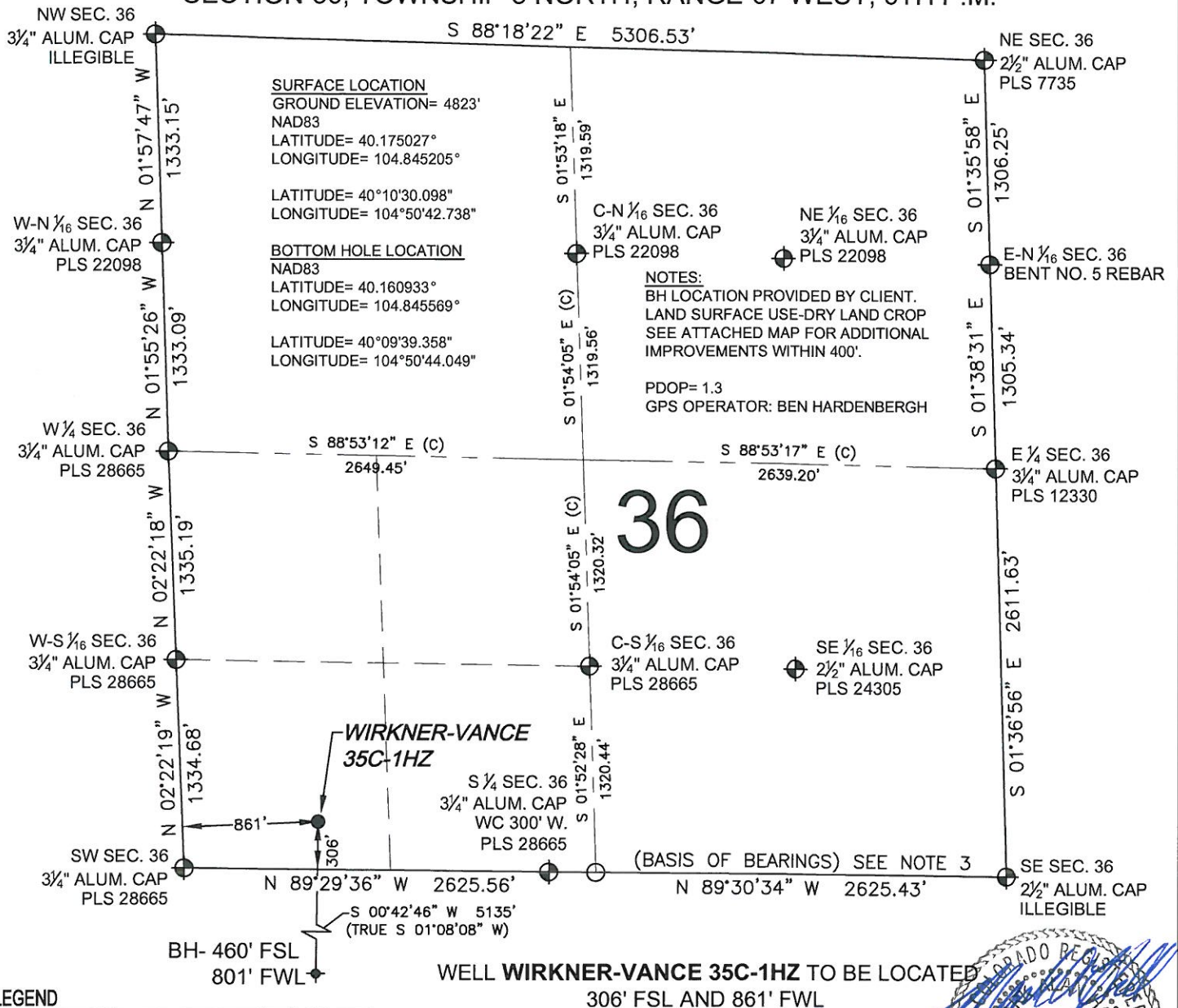


WELL LOCATION CERTIFICATE: WIRKNER-VANCE 35C-1HZ

SECTION 36, TOWNSHIP 3 NORTH, RANGE 67 WEST, 6TH P.M.



LEGEND

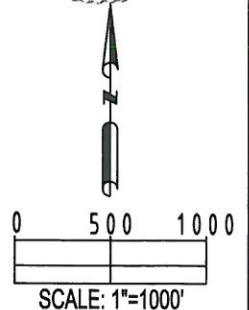
- = EXISTING MONUMENT
- ◆ = BOTTOM HOLE
- = PROPOSED WELL
- ◆ = EXISTING WELL
- BH = BOTTOM HOLE

NOTES:

1. THIS FIELD SURVEY CONFORMS TO THE MINIMUM STANDARDS SET BY THE C.O.G.C.C., RULE NO. 215
2. HORIZONTAL POSITIONS AND ORTHOMETRIC ELEVATIONS SHOWN AT THE WELL HEAD, ARE BASED ON GPS-RTK POSITIONS DERIVED FROM MINIMUM 2-HOUR STATIC OBSERVATIONS CORRECTED BY THE NATIONAL GEODETIC SURVEY ONLINE POSITIONING USER SERVICE, O.P.U.S. DATUM: HORIZONTAL = NAD83/2007, VERTICAL = NAVD88
3. THE BASIS OF BEARINGS ARE STATE PLANE COORDINATE SYSTEM GRID BEARINGS SHOWN HEREON BETWEEN THE DESCRIBED MONUMENTS SHOWN HEREON.
4. GRID DISTANCES ARE SHOWN, AS MEASURED IN THE FIELD, WITH TIES TO WELLS MEASURED PERPENDICULAR TO SECTION LINES.

I, MARK A. HALL, A LICENSED PROFESSIONAL LAND SURVEYOR IN THE STATE OF COLORADO DO HEREBY CERTIFY TO KERR-MCGEE OIL & GAS ONSHORE LP, THAT THE SURVEY AND WELL LOCATION CERTIFICATE SHOWN HEREON WERE DONE BY ME OR UNDER MY DIRECT SUPERVISION AND THAT THE DRAWING SHOWN HEREON ACCURATELY DEPICTS THE PROPOSED LOCATION OF THE WELL. THIS CERTIFICATE DOES NOT REPRESENT A LAND SURVEY PLAT OR IMPROVEMENT SURVEY PLAT AS DEFINED BY C.R.S. 38-51-102 AND CANNOT BE RELIED UPON TO DETERMINE OWNERSHIP.

MARK A. HALL, PLS 36073
COLORADO LICENSED PROFESSIONAL LAND SURVEYOR
FOR AND ON BEHALF OF P.F.S., LLC



SHEET 1 OF 2

PREPARED BY: PFS Petroleum Field Services, LLC 1801 W. 13th Ave. Denver, CO 80204	FIELD DATE: 07-31-13	SURFACE LOCATION:
	DRAWING DATE: 07-31-13	SW 1/4 SW 1/4,
	BY: SMF	SEC. 36, T3N, R67W, 6TH P.M.
	CHECKED: TJN	WELD COUNTY, COLORADO

NOTICE: ACCORDING TO COLORADO LAW YOU MUST COMMENCE ANY LEGAL ACTION BASED UPON ANY DEFECT IN THIS SURVEY WITHIN THREE YEARS AFTER YOU FIRST DISCOVER SUCH DEFECT. IN NO EVENT MAY ANY ACTION BASED UPON ANY DEFECT IN THIS SURVEY BE COMMENCED MORE THAN TEN YEARS FROM THIS SAID DATE OF THIS CERTIFICATION SHOWN HEREON.

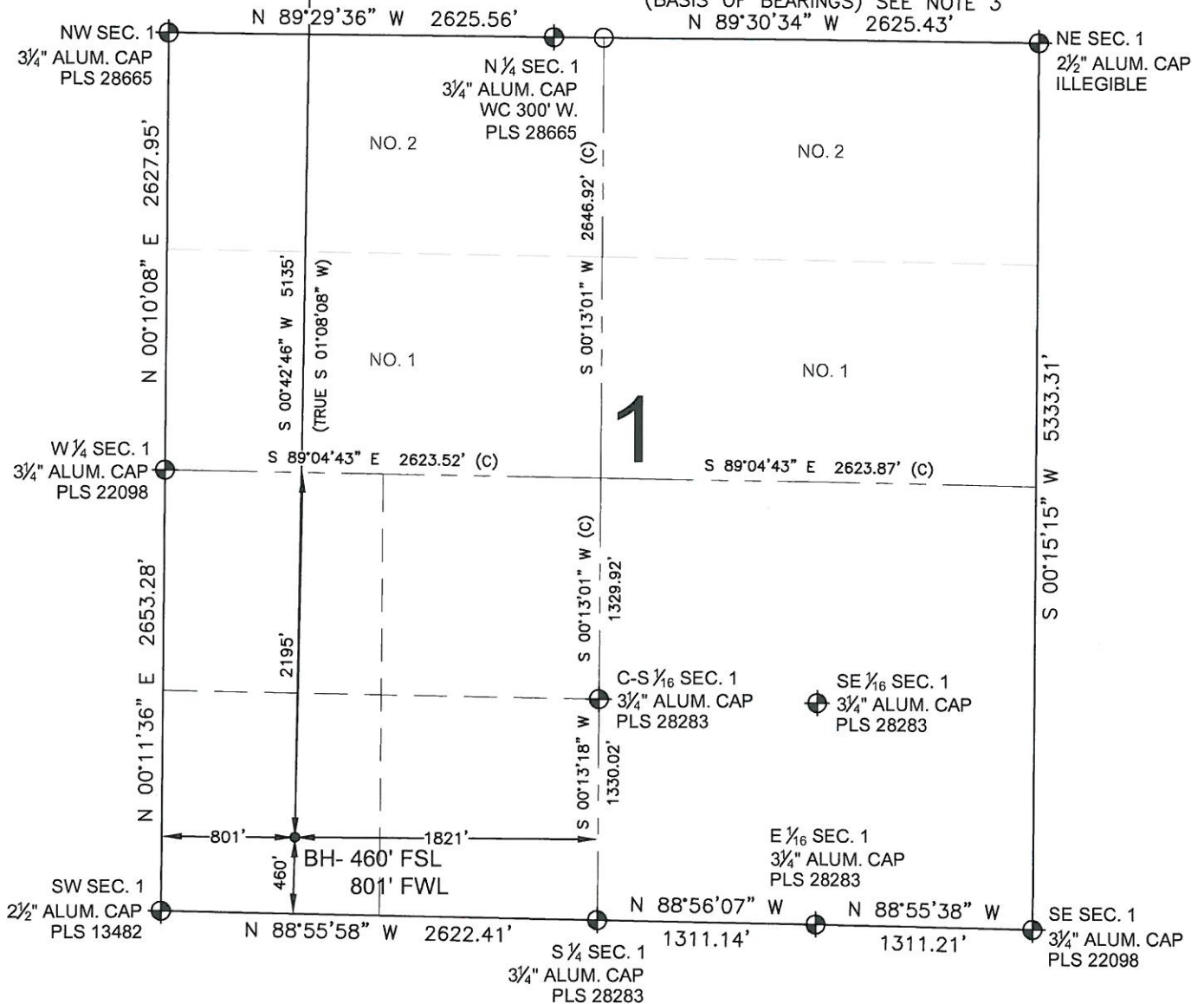
WELL LOCATION CERTIFICATE: WIRKNER-VANCE 35C-1HZ

SECTION 1, TOWNSHIP 2 NORTH, RANGE 67 WEST, 6TH P.M.

WIRKNER-VANCE

35C-1HZ

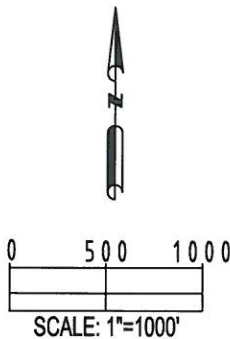
(BASIS OF BEARINGS) SEE NOTE 3



⊕ = EXISTING MONUMENT ⊕ = BOTTOM HOLE
 ● = PROPOSED WELL ◆ = EXISTING WELL
 BH = BOTTOM HOLE

NOTES:

1. THIS FIELD SURVEY CONFORMS TO THE MINIMUM STANDARDS SET BY THE C.O.G.C.C., RULE NO. 215
2. HORIZONTAL POSITIONS AND ORTHOMETRIC ELEVATIONS SHOWN AT THE WELL HEAD, ARE BASED ON GPS-RTK POSITIONS DERIVED FROM MINIMUM 2-HOUR STATIC OBSERVATIONS CORRECTED BY THE NATIONAL GEODETIC SURVEY ONLINE POSITIONING USER SERVICE, O.P.U.S. DATUM: HORIZONTAL = NAD83/2007, VERTICAL = NAVD88
3. THE BASIS OF BEARINGS ARE STATE PLANE COORDINATE SYSTEM GRID BEARINGS SHOWN HEREON BETWEEN THE DESCRIBED MONUMENTS SHOWN HEREON.
4. GRID DISTANCES ARE SHOWN, AS MEASURED IN THE FIELD, WITH TIES TO WELLS MEASURED PERPENDICULAR TO SECTION LINES.



MARK A. HALL, PLS 36073
 COLORADO LICENSED PROFESSIONAL LAND SURVEYOR
 FOR AND ON BEHALF OF P.F.S., LLC

SHEET 2 OF 2

PREPARED BY: Petroleum Field Services, LLC 1801 W. 13th Ave. Denver, CO 80204	FIELD DATE: 07-31-13	SURFACE LOCATION: SW 1/4 SW 1/4, SEC. 36, T3N, R67W, 6TH P.M. WELD COUNTY, COLORADO
	DRAWING DATE: 07-31-13	
	BY: SMF	
	CHECKED: TJN	

NOTICE: ACCORDING TO COLORADO LAW YOU MUST COMMENCE ANY LEGAL ACTION BASED UPON ANY DEFECT IN THIS SURVEY WITHIN THREE YEARS AFTER YOU FIRST DISCOVER SUCH DEFECT. IN NO EVENT MAY ANY ACTION BASED UPON ANY DEFECT IN THIS SURVEY BE COMMENCED MORE THAN TEN YEARS FROM THIS SAID DATE OF THIS CERTIFICATION SHOWN HEREON.