

T10N, R58W, 6th P.M.

WHITING OIL & GAS CORP.

2010 UELS Alum. Cap,  
Flush W/Ground  
Lat: 40.816906°  
Long: 103.841850°

Target Bottom Hole

2010 UELS Alum. Cap,  
0.3' High  
Lat: 40.816975°  
Long: 103.822819°

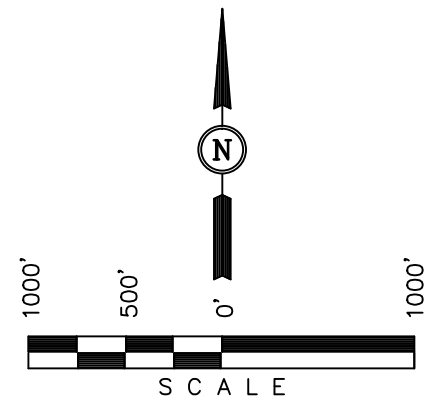
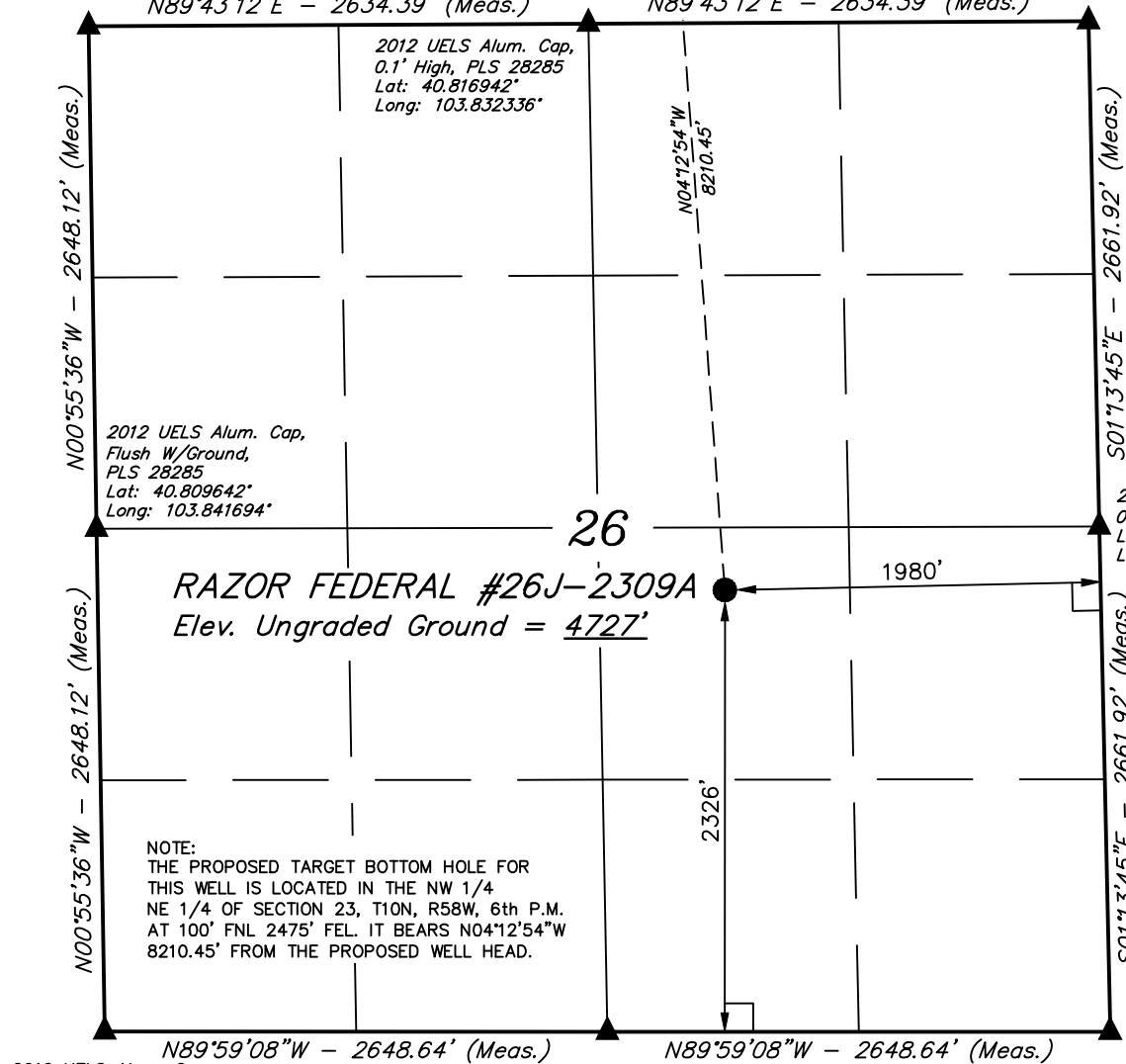
Well location, RAZOR FEDERAL #26J-2309A  
(SURFACE LOCATION), located as shown in the NW  
1/4 SE 1/4 of Section 26, T10N, R58W, 6th P.M.,  
Weld County, Colorado.

### BASIS OF ELEVATION

SPOT ELEVATION LOCATED AT THE NORTHEAST CORNER OF  
SECTION 15, T9N, R58W, 6th P.M. TAKEN FROM THE  
GATEHOOK SPRING, QUADRANGLE, COLORADO, WELD COUNTY,  
7.5 MINUTE QUAD (TOPOGRAPHIC MAP) PUBLISHED BY THE  
UNITED STATES DEPARTMENT OF THE INTERIOR, GEOLOGICAL  
SURVEY. SAID ELEVATION IS MARKED AS BEING 4679 FEET.

### BASIS OF BEARINGS

BASIS OF BEARINGS IS A G.P.S. OBSERVATION.



### CERTIFICATE

THIS IS TO CERTIFY THAT THE ABOVE PLAT WAS PREPARED FROM  
FIELD NOTES OF ACTUAL SURVEYS MADE BY ME OR UNDER MY  
SUPERVISION AND THAT THE SAME ARE TRUE AND CORRECT TO THE  
BEST OF MY KNOWLEDGE AND BELIEF.

REVISED: 06-29-13 J.S.  
REVISED: 04-15-13 J.S.  
REVISED: 03-21-13 J.S.  
REVISED: 05-24-12

REGISTERED LAND SURVEYOR  
REGISTRATION NO. 17492  
STATE OF COLORADO  
09-01-13

### LEGEND:

- └─┘ = 90° SYMBOL
- = PROPOSED WELL HEAD.
- ▲ = SECTION CORNERS LOCATED.

PDOP = 1.6

NAD 83 (SURFACE LOCATION)	
LATITUDE	= 40°48'31.52" (40.808756)
LONGITUDE	= 103°49'47.07" (103.829742)
NAD 27 (SURFACE LOCATION)	
LATITUDE	= 40°48'31.57" (40.808769)
LONGITUDE	= 103°49'45.26" (103.829239)

UINTAH ENGINEERING & LAND SURVEYING  
85 SOUTH 200 EAST - VERNAL, UTAH 84078  
(435) 789-1017

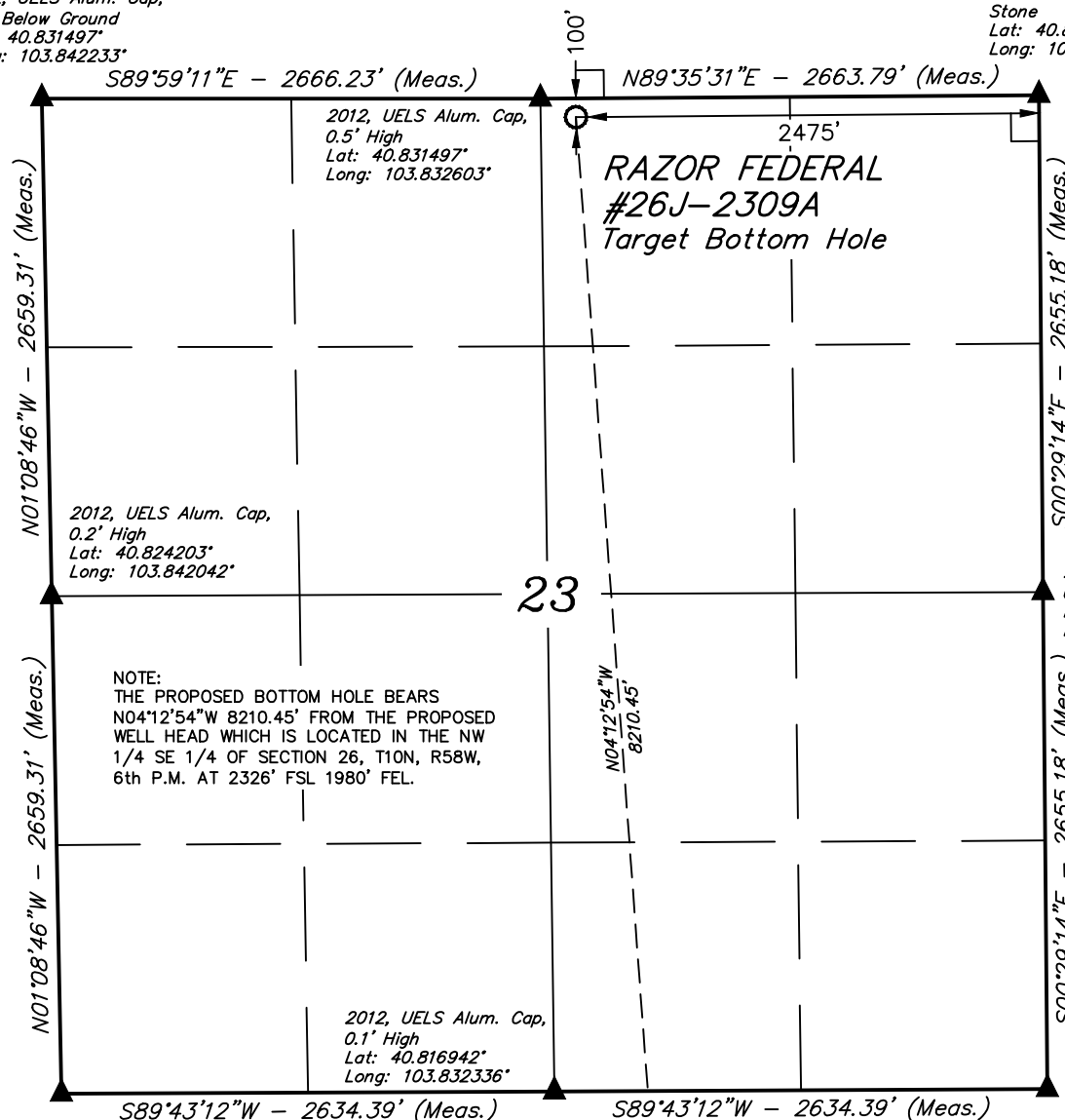
SCALE 1" = 1000'	DATE SURVEYED: 05-01-12	DATE DRAWN: 05-08-12
PARTY J.H. D.L.S. C.M. W.C.M.	REFERENCES G.L.O. PLAT	
WEATHER WARM	FILE WHITING OIL & GAS CORP.	

T10N, R58W, 6th P.M.

WHITING OIL & GAS CORP.

2012, UELS Alum. Cap,  
0.5' Below Ground  
Lat: 40.831497°  
Long: 103.842233°

Stone  
Lat: 40.831547°  
Long: 103.822978°



2010, UELS Alum. Cap,  
Flush W/ Ground  
Lat: 40.816906°  
Long: 103.841850°

2010, UELS Alum. Cap,  
0.3' High, Fence Corner  
Lat: 40.816975°  
Long: 103.822819°

# LEGEND:

- └─┘ = 90° SYMBOL
- = PROPOSED WELL HEAD.
- ▲ = SECTION CORNERS LOCATED.

Surface Location ●

NAD 83 (TARGET BOTTOM HOLE)
LATITUDE = 40°49'52.41" (40.831225)
LONGITUDE = 103°49'54.90" (103.831917)
NAD 27 (TARGET BOTTOM HOLE)
LATITUDE = 40°49'52.46" (40.831239)
LONGITUDE = 103°49'53.09" (103.831414)

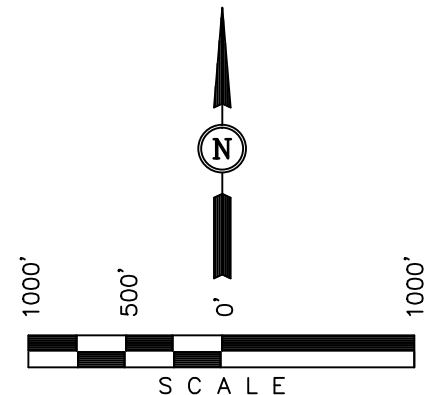
Well location, RAZOR FEDERAL #26J-2309A (TARGET BOTTOM HOLE), located as shown in the NW 1/4 NE 1/4 of Section 23, T10N, R58W, 6th P.M., Weld County, Colorado.

## BASIS OF ELEVATION

SPOT ELEVATION LOCATED AT THE NORTHEAST CORNER OF SECTION 15, T9N, R58W, 6th P.M. TAKEN FROM THE GATEHOOK SPRING, QUADRANGLE, COLORADO, WELD COUNTY, 7.5 MINUTE QUAD (TOPOGRAPHIC MAP) PUBLISHED BY THE UNITED STATES DEPARTMENT OF THE INTERIOR, GEOLOGICAL SURVEY. SAID ELEVATION IS MARKED AS BEING 4679 FEET.

## BASIS OF BEARINGS

BASIS OF BEARINGS IS A G.P.S. OBSERVATION.



## CERTIFICATE

THIS IS TO CERTIFY THAT THE ABOVE MAP WAS PREPARED FROM FIELD NOTES OF ACTUAL SURVEYS MADE BY ME OR UNDER MY SUPERVISION AND THAT THE SAME ARE TRUE AND CORRECT TO THE BEST OF MY KNOWLEDGE AND BELIEF.

REGISTERED LAND SURVEYOR  
REGISTRATION NO. 17492  
STATE OF COLORADO  
04-15-13

REVISED: 04-15-13 J.S.  
REVISED: 03-21-13 J.S.  
REVISED: 05-24-12

UINTAH ENGINEERING & LAND SURVEYING  
85 SOUTH 200 EAST - VERNAL, UTAH 84078  
(435) 789-1017

SCALE 1" = 1000'	DATE SURVEYED: 05-01-12	DATE DRAWN: 05-08-12
PARTY J.H. D.L.S. C.M. W.C.M.	REFERENCES G.L.O. PLAT	
WEATHER WARM	FILE	WHITING OIL & GAS CORP.