

**T10N, R58W, 6th P.M.**

2010 UELS Alum. Cap,  
Flush W/Ground  
Lat: 40.816906°  
Long: 103.841850°

2012 UELS Alum. Cap,  
0.1' High, PLS 28285  
Lat: 40.816942°  
Long: 103.832336°

2010 UELS Alum.  
Cap, 0.3' High  
Lat: 40.816975°  
Long: 103.822819°

**WHITING OIL & GAS CORP.**

Well location, RAZOR #26L-3502B (SURFACE LOCATION), located as shown in the NW 1/4 SW 1/4 of Section 26, T10N, R58W, 6th P.M., Weld County, Colorado.

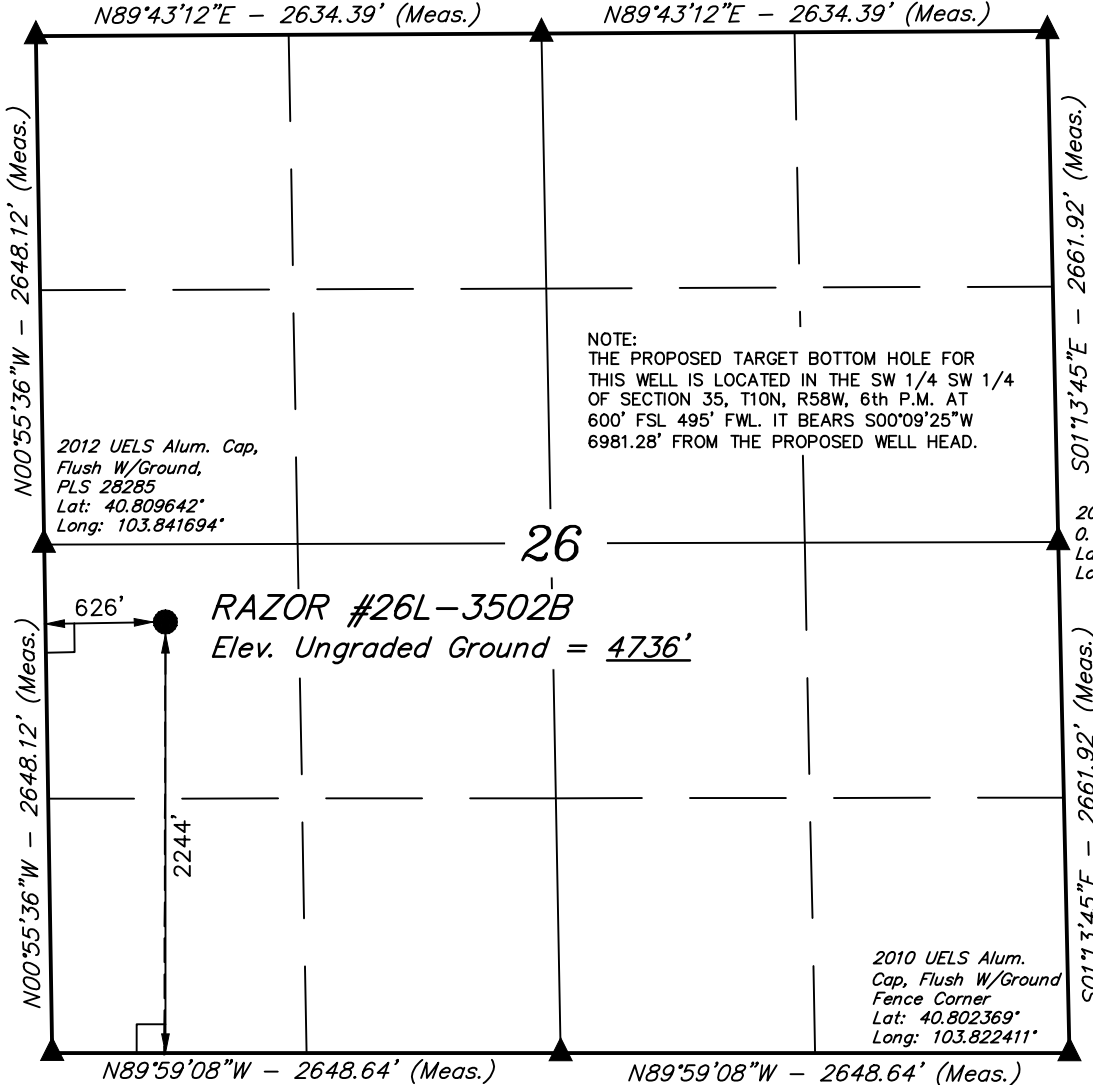
**BASIS OF ELEVATION**

SPOT ELEVATION LOCATED AT THE NORTHEAST CORNER OF SECTION 15, T9N, R58W, 6th P.M. TAKEN FROM THE GATEHOOK SPRING, QUADRANGLE, COLORADO, WELD COUNTY, 7.5 MINUTE QUAD (TOPOGRAPHIC MAP) PUBLISHED BY THE UNITED STATES DEPARTMENT OF THE INTERIOR, GEOLOGICAL SURVEY. SAID ELEVATION IS MARKED AS BEING 4679 FEET.

**BASIS OF BEARINGS**

BASIS OF BEARINGS IS A G.P.S. OBSERVATION.

NOTE:  
THE PROPOSED TARGET BOTTOM HOLE FOR THIS WELL IS LOCATED IN THE SW 1/4 SW 1/4 OF SECTION 35, T10N, R58W, 6th P.M. AT 600' FSL 495' FWL. IT BEARS S00°09'25"W 6981.28' FROM THE PROPOSED WELL HEAD.

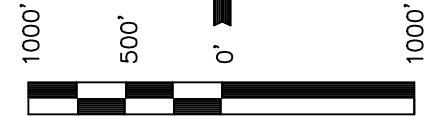


2010 UELS Alum. Cap,  
Flush W/Ground,  
E/W Fence  
Lat: 40.802375°  
Long: 103.841542°

2012 Alum. Cap,  
Flush W/Ground  
Lat: 40.802372°  
Long: 103.831975°

2010 UELS Alum.  
Cap, Flush W/Ground  
Fence Corner  
Lat: 40.802369°  
Long: 103.822411°

2012 UELS Alum. Cap,  
0.1' High  
Lat: 40.809672°  
Long: 103.822617°



SCALE

**CERTIFICATE**

THIS IS TO CERTIFY THAT THE ABOVE MAP WAS PREPARED FROM FIELD NOTES OF ACTUAL SURVEYS MADE BY ME OR UNDER MY SUPERVISION AND THAT THE SAME ARE TRUE AND CORRECT TO THE BEST OF MY KNOWLEDGE AND BELIEF.

**REGISTERED LAND SURVEYOR**  
REGISTRATION NO. 17492  
STATE OF COLORADO  
09-01-13

REVISED: 06-29-13 J.S.  
REVISED: 04-15-13 J.S.

**UINTAH ENGINEERING & LAND SURVEYING**  
85 SOUTH 200 EAST - VERNAL, UTAH 84078  
(435) 789-1017

**LEGEND:**

└─ = 90° SYMBOL

● = PROPOSED WELL HEAD.

▲ = SECTION CORNERS LOCATED.

○ Target Bottom Hole

PDOP = 1.4

<b>NAD 83 (SURFACE LOCATION)</b>
LATITUDE = 40°48'30.72" (40.808533)
LONGITUDE = 103°50'21.88" (103.839411)
<b>NAD 27 (SURFACE LOCATION)</b>
LATITUDE = 40°48'30.77" (40.808547)
LONGITUDE = 103°50'20.07" (103.838908)

SCALE 1" = 1000'	DATE SURVEYED: 03-14-13	DATE DRAWN: 03-19-13
PARTY J.H. C.M. H.K.W.	REFERENCES G.L.O. PLAT	
WEATHER COOL	FILE WHITING OIL & GAS CORP.	

*T10N, R58W, 6th. P.M.*

WHITING OIL & GAS CORP.

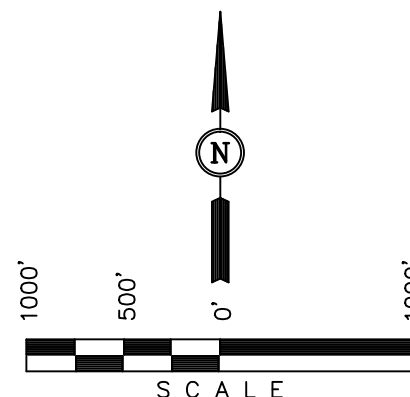
Well location, RAZOR #26L-3502B (TARGET  
BOTTOM HOLE), located as shown in the SW 1/4  
SW 1/4 of Section 35, T10N, R58W, 6th P.M.,  
Weld County, Colorado.

## BASIS OF ELEVATION

SPOT ELEVATION LOCATED AT THE NORTHEAST CORNER OF SECTION 15, T9N, R58W, 6th P.M. TAKEN FROM THE GATEHOOK SPRING, QUADRANGLE, COLORADO, WELD COUNTY, 7.5 MINUTE QUAD (TOPOGRAPHIC MAP) PUBLISHED BY THE UNITED STATES DEPARTMENT OF THE INTERIOR, GEOLOGICAL SURVEY. SAID ELEVATION IS MARKED AS BEING 4679 FEET.

## BASIS OF BEARINGS

BASIS OF BEARINGS IS A G.P.S. OBSERVATION.



# CERTIFICATE

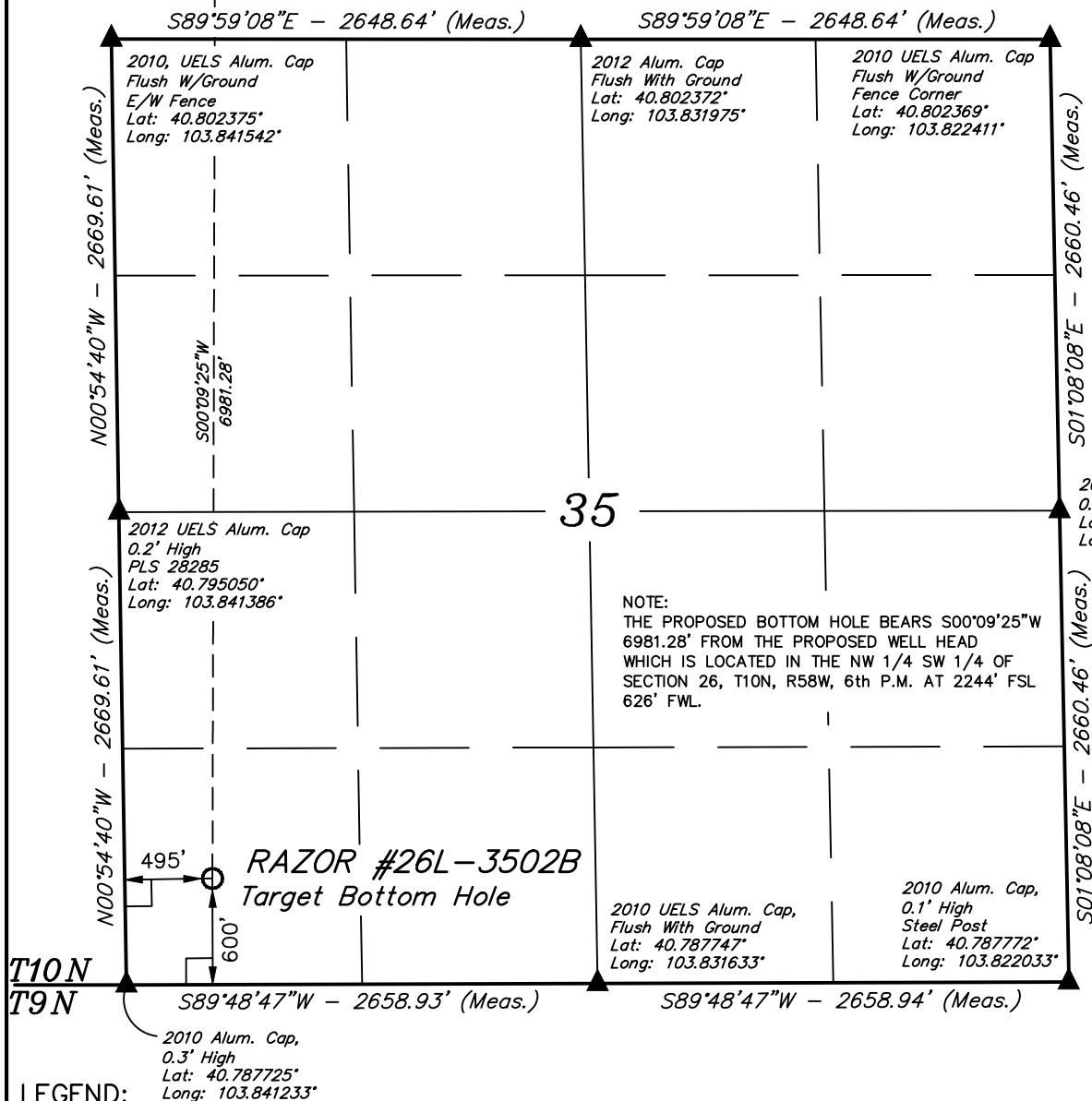
THIS IS TO CERTIFY THAT THE ABOVE MAP WAS PREPARED FROM  
FIELD NOTES OF ACTUAL SURVEYS MADE BY ME OR UNDER MY  
SUPERVISION AND THAT THE SAME ARE TRUE AND CORRECT TO THE  
BEST OF MY KNOWLEDGE AND BELIEF.

REGISTERED LAND SURVEYOR  
REGISTRATION NO. 17492  
STATE OF COLORADO




REVISÉD: 04-15-13 J.S.

UINTAH ENGINEERING & LAND SURVEYING  
85 SOUTH 200 EAST - VERNAL, UTAH 84078  
(435) 789-1017

SCALE 1" = 1000'	DATE SURVEYED: 03-14-13	DATE DRAWN: 03-19-13
PARTY J.H. C.M. H.K.W.	REFERENCES G.L.O. PLAT	
WEATHER COOL	FILE WHITING OIL & GAS CORP.	



LEGEND:

-  = 90° SYMBOL  
 = PROPOSED WELL HEAD.  
 = SECTION CORNERS LOCATED.

<b>NAD 83 (TARGET BOTTOM HOLE)</b>	
LATITUDE	= 40°47'21.75" (40.789375)
LONGITUDE	= 103°50'22.13" (103.839481)
<b>NAD 27 (TARGET BOTTOM HOLE)</b>	
LATITUDE	= 40°47'21.80" (40.789389)
LONGITUDE	= 103°50'20.32" (103.838978)