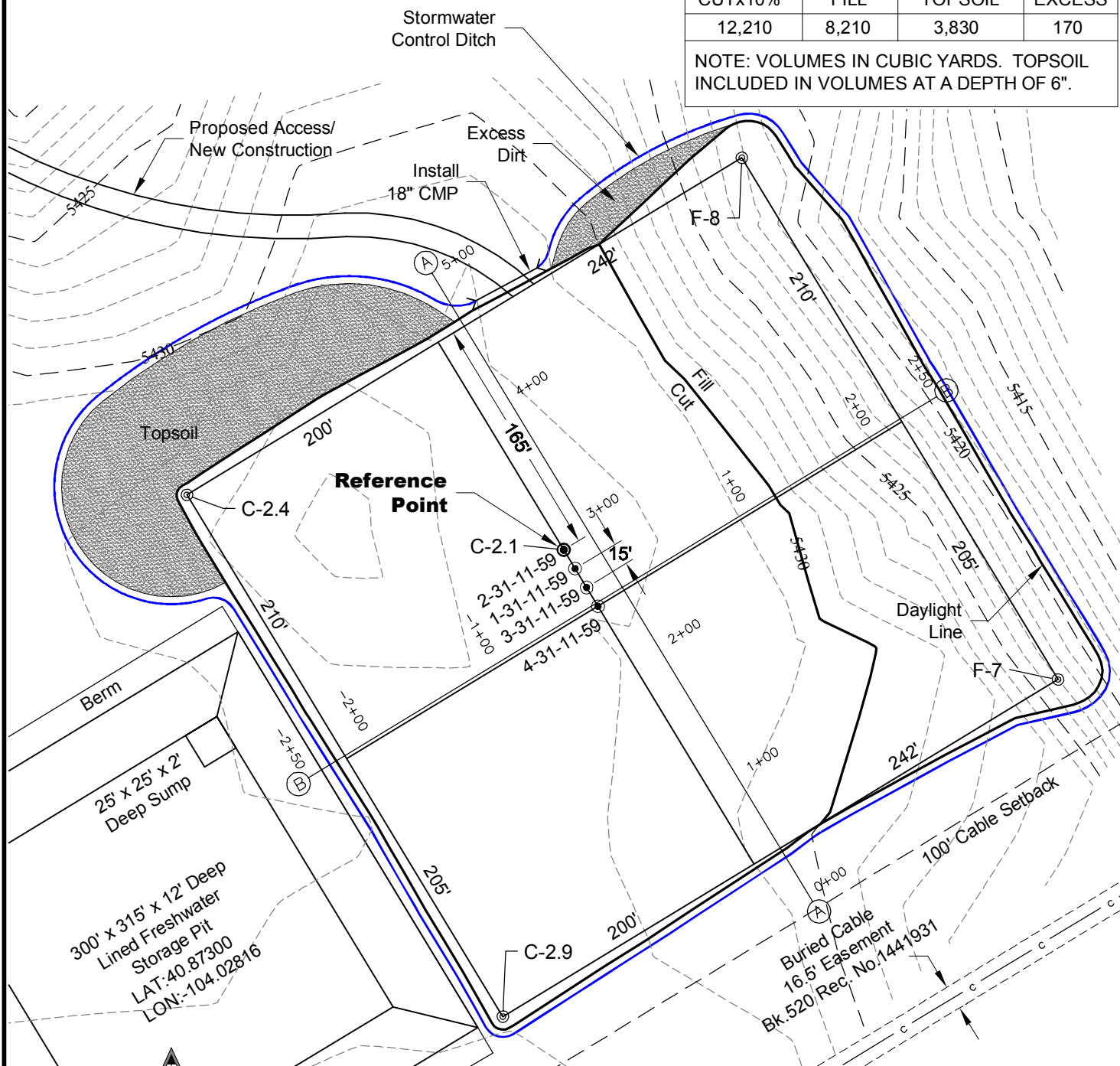


1 of 2

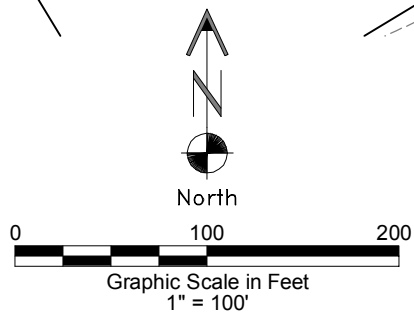
SURFACE USE:
GRAZING

PAD= 415'X442'		ELEV= 5430.0'	
DISTURBED AREA= 5.9± ACRES			
ESTIMATED DIRT QUANTITIES			
CUTx10%	FILL	TOPSOIL	EXCESS
12,210	8,210	3,830	170

NOTE: VOLUMES IN CUBIC YARDS. TOPSOIL INCLUDED IN VOLUMES AT A DEPTH OF 6".



NOTE:
10% ALLOWANCE IS MADE FOR SOIL EXPANSION.



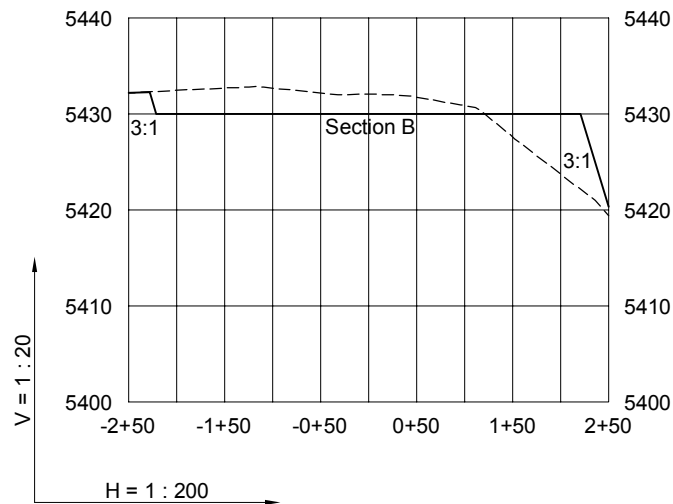
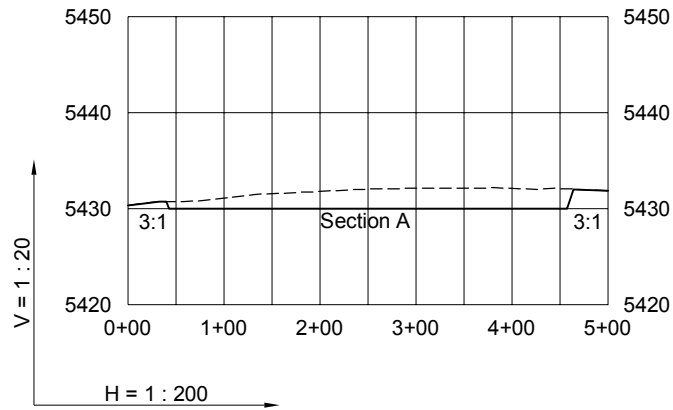
LAND SURVEYING AND MAPPING
LAFAYETTE - WINTER PARK
Ph 303 666 0379 Fx 303 665 6320

CARRIZO NIOBRARA LLC
KONIG 2-31-11-59 PAD

LOT 4 SECTION 31 T11N R59W
6th PM WELD COUNTY COLORADO

CONSTRUCTION LAYOUT DRAWING

2 of 2



7/1/13

----- Existing Ground
 _____ Proposed Grade

GEO SURV

LAND SURVEYING AND MAPPING
 LAFAYETTE - WINTER PARK
 Ph 303 666 0379 Fx 303 665 6320

CARRIZO NIOBRARA LLC
 KONIG 2-31-11-59 PAD

LOT 4 SECTION 31 T11N R59W
6th PM WELD COUNTY COLORADO