

Synergy Resources	
--------------------------	--

Well Name: **SRC Gilbert 22-14-11CHZE**

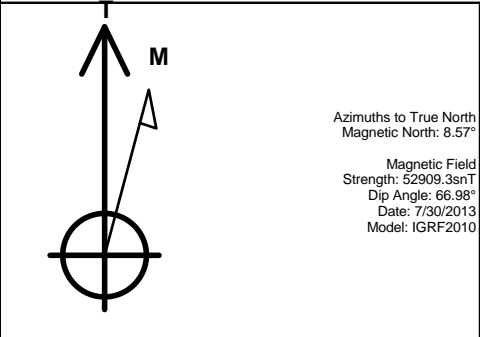
Surface Location: SRC Gilbert 42-14-11NHZ Pad Sec.14-T5N-R66W
North American Datum 1983 , US State Plane 1983 , Colorado Northern Zone

Ground Elevation: 4835.0

+N/-S	+E/-W	Northing	Easting	Latitude	Longitude	Slot
0.0	0.0	1389104.69	3210782.68	40.399025	-104.743180	
RKB-12' WELL @ 4847.0ft (RKB-12')						

WELLBORE TARGET DETAILS	
-------------------------	--

Name	TVD	+N/-S	+E/-W	Shape
SHL 2482'FSL & 2290'FEL, Sec.14	1.0	0.0	0.0	Point
BHL 480'FNL & 2572'FWL, Sec.11	7448.0	7879.0	-1102.1	Point

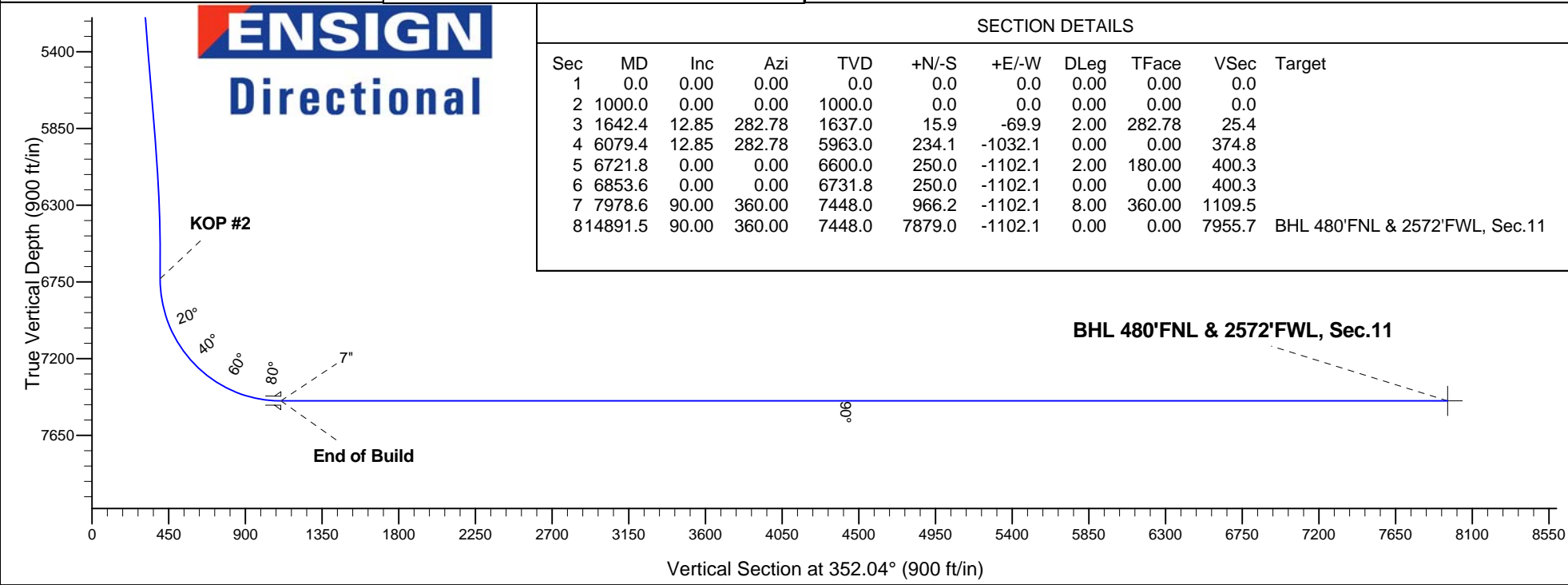
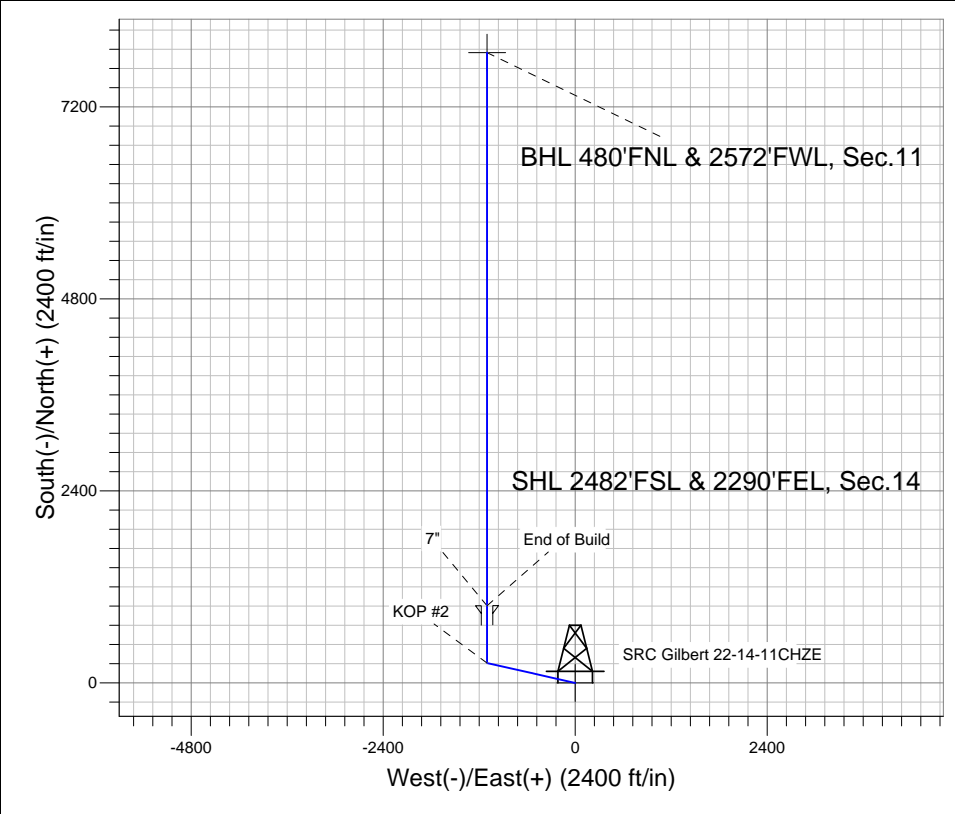


SRC Gilbert 42-14-11NHZ Pad Sec.14-T5N-R66W
SRC Gilbert 22-14-11CHZE
Plan #1 (7-30-13)
16:13, July 30 2013

ANNOTATIONS

TVD	MD	Annotation
-----	----	------------

1000.0	1000.0	KOP #1
6731.8	6853.6	KOP #2
7448.0	7978.6	End of Build





Directional

Synergy Resources

SEC.14-T5N-R66W

SRC Gilbert 42-14-11NHZ Pad Sec.14-T5N-R66W

SRC Gilbert 22-14-11CHZE

Wellbore #1

Plan: Plan #1 (7-30-13)

Standard Planning Report

30 July, 2013

Database:	Landmark	Local Co-ordinate Reference:	Well SRC Gilbert 22-14-11CHZE
Company:	Synergy Resources	TVD Reference:	WELL @ 4847.0ft (RKB-12')
Project:	SEC.14-T5N-R66W	MD Reference:	WELL @ 4847.0ft (RKB-12')
Site:	SRC Gilbert 42-14-11NHZ Pad Sec.14-T5N-R66W	North Reference:	True
Well:	SRC Gilbert 22-14-11CHZE	Survey Calculation Method:	Minimum Curvature
Wellbore:	Wellbore #1		
Design:	Plan #1 (7-30-13)		

Project	SEC.14-T5N-R66W		
Map System:	US State Plane 1983	System Datum:	Mean Sea Level
Geo Datum:	North American Datum 1983		Using Well Reference Point
Map Zone:	Colorado Northern Zone		Using geodetic scale factor

Site						SRC Gilbert 42-14-11NHZ Pad Sec.14-T5N-R66W											
Site Position:						Northing:			1,389,074.67 ft			Latitude:			40.398941		
From:			Lat/Long			Easting:			3,210,850.06 ft			Longitude:			-104.742939		
Position Uncertainty:			0.0 ft			Slot Radius:			"			Grid Convergence:			0.49 °		

Well	SRC Gilbert 22-14-11CHZE					
Well Position	+N/-S	30.6 ft	Northing:	1,389,104.69 ft	Latitude:	40.399025
	+E/-W	-67.1 ft	Easting:	3,210,782.68 ft	Longitude:	-104.743180
Position Uncertainty		0.0 ft	Wellhead Elevation:	ft	Ground Level:	4,835.0 ft

Wellbore	Wellbore #1				
Magnetics	Model Name	Sample Date	Declination (°)	Dip Angle (°)	Field Strength (nT)
	IGRF2010	7/30/2013	8.57	66.98	52,909

Design	Plan #1 (7-30-13)			
Audit Notes:				
Version:	Phase:	PROTOTYPE	Tie On Depth:	0.0
Vertical Section:	Depth From (TVD) (ft)	+N/-S (ft)	+E/-W (ft)	Direction (°)
	0.0	0.0	0.0	352.04

Plan Sections										
Measured Depth (ft)	Inclination (°)	Azimuth (°)	Vertical Depth (ft)	+N/-S (ft)	+E/-W (ft)	Dogleg Rate (°/100ft)	Build Rate (°/100ft)	Turn Rate (°/100ft)	TFO (°)	Target
0.0	0.00	0.00	0.0	0.0	0.0	0.00	0.00	0.00	0.00	
1,000.0	0.00	0.00	1,000.0	0.0	0.0	0.00	0.00	0.00	0.00	
1,642.4	12.85	282.78	1,637.0	15.9	-69.9	2.00	2.00	0.00	282.78	
6,079.4	12.85	282.78	5,963.0	234.1	-1,032.1	0.00	0.00	0.00	0.00	
6,721.8	0.00	0.00	6,600.0	250.0	-1,102.1	2.00	-2.00	0.00	180.00	
6,853.6	0.00	0.00	6,731.8	250.0	-1,102.1	0.00	0.00	0.00	0.00	
7,978.6	90.00	360.00	7,448.0	966.2	-1,102.1	8.00	8.00	0.00	360.00	
14,891.5	90.00	360.00	7,448.0	7,879.0	-1,102.1	0.00	0.00	0.00	0.00	BHL 480'FNL & 257

Database:	Landmark	Local Co-ordinate Reference:	Well SRC Gilbert 22-14-11CHZE
Company:	Synergy Resources	TVD Reference:	WELL @ 4847.0ft (RKB-12')
Project:	SEC.14-T5N-R66W	MD Reference:	WELL @ 4847.0ft (RKB-12')
Site:	SRC Gilbert 42-14-11NHZ Pad Sec.14-T5N-R66W	North Reference:	True
Well:	SRC Gilbert 22-14-11CHZE	Survey Calculation Method:	Minimum Curvature
Wellbore:	Wellbore #1		
Design:	Plan #1 (7-30-13)		

Planned Survey									
Measured Depth (ft)	Inclination (°)	Azimuth (°)	Vertical Depth (ft)	+N/-S (ft)	+E/-W (ft)	Vertical Section (ft)	Dogleg Rate (°/100ft)	Build Rate (°/100ft)	Turn Rate (°/100ft)
0.0	0.00	0.00	0.0	0.0	0.0	0.0	0.00	0.00	0.00
1.0	0.00	0.00	1.0	0.0	0.0	0.0	0.00	0.00	0.00
SHL 2482'FSL & 2290'FEL, Sec.14									
40.0	0.00	0.00	40.0	0.0	0.0	0.0	0.00	0.00	0.00
80.0	0.00	0.00	80.0	0.0	0.0	0.0	0.00	0.00	0.00
120.0	0.00	0.00	120.0	0.0	0.0	0.0	0.00	0.00	0.00
160.0	0.00	0.00	160.0	0.0	0.0	0.0	0.00	0.00	0.00
200.0	0.00	0.00	200.0	0.0	0.0	0.0	0.00	0.00	0.00
240.0	0.00	0.00	240.0	0.0	0.0	0.0	0.00	0.00	0.00
280.0	0.00	0.00	280.0	0.0	0.0	0.0	0.00	0.00	0.00
320.0	0.00	0.00	320.0	0.0	0.0	0.0	0.00	0.00	0.00
360.0	0.00	0.00	360.0	0.0	0.0	0.0	0.00	0.00	0.00
400.0	0.00	0.00	400.0	0.0	0.0	0.0	0.00	0.00	0.00
440.0	0.00	0.00	440.0	0.0	0.0	0.0	0.00	0.00	0.00
480.0	0.00	0.00	480.0	0.0	0.0	0.0	0.00	0.00	0.00
520.0	0.00	0.00	520.0	0.0	0.0	0.0	0.00	0.00	0.00
560.0	0.00	0.00	560.0	0.0	0.0	0.0	0.00	0.00	0.00
600.0	0.00	0.00	600.0	0.0	0.0	0.0	0.00	0.00	0.00
640.0	0.00	0.00	640.0	0.0	0.0	0.0	0.00	0.00	0.00
680.0	0.00	0.00	680.0	0.0	0.0	0.0	0.00	0.00	0.00
720.0	0.00	0.00	720.0	0.0	0.0	0.0	0.00	0.00	0.00
760.0	0.00	0.00	760.0	0.0	0.0	0.0	0.00	0.00	0.00
800.0	0.00	0.00	800.0	0.0	0.0	0.0	0.00	0.00	0.00
840.0	0.00	0.00	840.0	0.0	0.0	0.0	0.00	0.00	0.00
880.0	0.00	0.00	880.0	0.0	0.0	0.0	0.00	0.00	0.00
920.0	0.00	0.00	920.0	0.0	0.0	0.0	0.00	0.00	0.00
960.0	0.00	0.00	960.0	0.0	0.0	0.0	0.00	0.00	0.00
1,000.0	0.00	0.00	1,000.0	0.0	0.0	0.0	0.00	0.00	0.00
KOP #1									
1,040.0	0.80	282.78	1,040.0	0.1	-0.3	0.1	2.00	2.00	0.00
1,080.0	1.60	282.78	1,080.0	0.2	-1.1	0.4	2.00	2.00	0.00
1,120.0	2.40	282.78	1,120.0	0.6	-2.5	0.9	2.00	2.00	0.00
1,160.0	3.20	282.78	1,159.9	1.0	-4.4	1.6	2.00	2.00	0.00
1,200.0	4.00	282.78	1,199.8	1.5	-6.8	2.5	2.00	2.00	0.00
1,240.0	4.80	282.78	1,239.7	2.2	-9.8	3.6	2.00	2.00	0.00
1,280.0	5.60	282.78	1,279.6	3.0	-13.3	4.8	2.00	2.00	0.00
1,320.0	6.40	282.78	1,319.3	3.9	-17.4	6.3	2.00	2.00	0.00
1,360.0	7.20	282.78	1,359.1	5.0	-22.0	8.0	2.00	2.00	0.00
1,400.0	8.00	282.78	1,398.7	6.2	-27.2	9.9	2.00	2.00	0.00
1,440.0	8.80	282.78	1,438.3	7.5	-32.9	11.9	2.00	2.00	0.00
1,480.0	9.60	282.78	1,477.8	8.9	-39.1	14.2	2.00	2.00	0.00
1,520.0	10.40	282.78	1,517.1	10.4	-45.9	16.7	2.00	2.00	0.00
1,560.0	11.20	282.78	1,556.4	12.1	-53.2	19.3	2.00	2.00	0.00
1,600.0	12.00	282.78	1,595.6	13.8	-61.1	22.2	2.00	2.00	0.00
1,640.0	12.80	282.78	1,634.7	15.7	-69.4	25.2	2.00	2.00	0.00
1,642.4	12.85	282.78	1,637.0	15.9	-69.9	25.4	2.00	2.00	0.00
1,680.0	12.85	282.78	1,673.7	17.7	-78.1	28.4	0.00	0.00	0.00
1,720.0	12.85	282.78	1,712.7	19.7	-86.8	31.5	0.00	0.00	0.00
1,760.0	12.85	282.78	1,751.7	21.7	-95.4	34.7	0.00	0.00	0.00
1,800.0	12.85	282.78	1,790.7	23.6	-104.1	37.8	0.00	0.00	0.00
1,840.0	12.85	282.78	1,829.7	25.6	-112.8	41.0	0.00	0.00	0.00
1,880.0	12.85	282.78	1,868.7	27.6	-121.5	44.1	0.00	0.00	0.00
1,920.0	12.85	282.78	1,907.7	29.5	-130.1	47.3	0.00	0.00	0.00

Database:	Landmark	Local Co-ordinate Reference:	Well SRC Gilbert 22-14-11CHZE
Company:	Synergy Resources	TVD Reference:	WELL @ 4847.0ft (RKB-12')
Project:	SEC.14-T5N-R66W	MD Reference:	WELL @ 4847.0ft (RKB-12')
Site:	SRC Gilbert 42-14-11NHZ Pad	North Reference:	True
	Sec.14-T5N-R66W		
Well:	SRC Gilbert 22-14-11CHZE	Survey Calculation Method:	Minimum Curvature
Wellbore:	Wellbore #1		
Design:	Plan #1 (7-30-13)		

Planned Survey									
Measured Depth (ft)	Inclination (°)	Azimuth (°)	Vertical Depth (ft)	+N/-S (ft)	+E/-W (ft)	Vertical Section (ft)	Dogleg Rate (°/100ft)	Build Rate (°/100ft)	Turn Rate (°/100ft)
1,960.0	12.85	282.78	1,946.7	31.5	-138.8	50.4	0.00	0.00	0.00
2,000.0	12.85	282.78	1,985.7	33.5	-147.5	53.6	0.00	0.00	0.00
2,040.0	12.85	282.78	2,024.7	35.4	-156.2	56.7	0.00	0.00	0.00
2,080.0	12.85	282.78	2,063.7	37.4	-164.8	59.9	0.00	0.00	0.00
2,120.0	12.85	282.78	2,102.7	39.4	-173.5	63.0	0.00	0.00	0.00
2,160.0	12.85	282.78	2,141.7	41.3	-182.2	66.2	0.00	0.00	0.00
2,200.0	12.85	282.78	2,180.7	43.3	-190.9	69.3	0.00	0.00	0.00
2,240.0	12.85	282.78	2,219.7	45.3	-199.5	72.5	0.00	0.00	0.00
2,280.0	12.85	282.78	2,258.7	47.2	-208.2	75.6	0.00	0.00	0.00
2,320.0	12.85	282.78	2,297.7	49.2	-216.9	78.8	0.00	0.00	0.00
2,360.0	12.85	282.78	2,336.7	51.2	-225.6	81.9	0.00	0.00	0.00
2,400.0	12.85	282.78	2,375.7	53.1	-234.2	85.1	0.00	0.00	0.00
2,440.0	12.85	282.78	2,414.7	55.1	-242.9	88.2	0.00	0.00	0.00
2,480.0	12.85	282.78	2,453.7	57.1	-251.6	91.4	0.00	0.00	0.00
2,520.0	12.85	282.78	2,492.7	59.0	-260.3	94.5	0.00	0.00	0.00
2,560.0	12.85	282.78	2,531.7	61.0	-268.9	97.7	0.00	0.00	0.00
2,600.0	12.85	282.78	2,570.7	63.0	-277.6	100.8	0.00	0.00	0.00
2,640.0	12.85	282.78	2,609.7	64.9	-286.3	104.0	0.00	0.00	0.00
2,680.0	12.85	282.78	2,648.7	66.9	-294.9	107.1	0.00	0.00	0.00
2,720.0	12.85	282.78	2,687.7	68.9	-303.6	110.3	0.00	0.00	0.00
2,760.0	12.85	282.78	2,726.7	70.8	-312.3	113.4	0.00	0.00	0.00
2,800.0	12.85	282.78	2,765.6	72.8	-321.0	116.6	0.00	0.00	0.00
2,840.0	12.85	282.78	2,804.6	74.8	-329.6	119.7	0.00	0.00	0.00
2,880.0	12.85	282.78	2,843.6	76.7	-338.3	122.9	0.00	0.00	0.00
2,920.0	12.85	282.78	2,882.6	78.7	-347.0	126.0	0.00	0.00	0.00
2,960.0	12.85	282.78	2,921.6	80.7	-355.7	129.2	0.00	0.00	0.00
3,000.0	12.85	282.78	2,960.6	82.7	-364.3	132.3	0.00	0.00	0.00
3,040.0	12.85	282.78	2,999.6	84.6	-373.0	135.5	0.00	0.00	0.00
3,080.0	12.85	282.78	3,038.6	86.6	-381.7	138.6	0.00	0.00	0.00
3,120.0	12.85	282.78	3,077.6	88.6	-390.4	141.8	0.00	0.00	0.00
3,160.0	12.85	282.78	3,116.6	90.5	-399.0	144.9	0.00	0.00	0.00
3,200.0	12.85	282.78	3,155.6	92.5	-407.7	148.1	0.00	0.00	0.00
3,240.0	12.85	282.78	3,194.6	94.5	-416.4	151.2	0.00	0.00	0.00
3,280.0	12.85	282.78	3,233.6	96.4	-425.1	154.4	0.00	0.00	0.00
3,320.0	12.85	282.78	3,272.6	98.4	-433.7	157.5	0.00	0.00	0.00
3,360.0	12.85	282.78	3,311.6	100.4	-442.4	160.7	0.00	0.00	0.00
3,400.0	12.85	282.78	3,350.6	102.3	-451.1	163.8	0.00	0.00	0.00
3,440.0	12.85	282.78	3,389.6	104.3	-459.8	167.0	0.00	0.00	0.00
3,480.0	12.85	282.78	3,428.6	106.3	-468.4	170.1	0.00	0.00	0.00
3,520.0	12.85	282.78	3,467.6	108.2	-477.1	173.3	0.00	0.00	0.00
3,560.0	12.85	282.78	3,506.6	110.2	-485.8	176.4	0.00	0.00	0.00
3,600.0	12.85	282.78	3,545.6	112.2	-494.4	179.6	0.00	0.00	0.00
3,640.0	12.85	282.78	3,584.6	114.1	-503.1	182.7	0.00	0.00	0.00
3,680.0	12.85	282.78	3,623.6	116.1	-511.8	185.9	0.00	0.00	0.00
3,720.0	12.85	282.78	3,662.6	118.1	-520.5	189.0	0.00	0.00	0.00
3,760.0	12.85	282.78	3,701.6	120.0	-529.1	192.2	0.00	0.00	0.00
3,800.0	12.85	282.78	3,740.6	122.0	-537.8	195.3	0.00	0.00	0.00
3,840.0	12.85	282.78	3,779.6	124.0	-546.5	198.5	0.00	0.00	0.00
3,880.0	12.85	282.78	3,818.6	125.9	-555.2	201.6	0.00	0.00	0.00
3,920.0	12.85	282.78	3,857.6	127.9	-563.8	204.8	0.00	0.00	0.00
3,960.0	12.85	282.78	3,896.6	129.9	-572.5	207.9	0.00	0.00	0.00
4,000.0	12.85	282.78	3,935.6	131.8	-581.2	211.1	0.00	0.00	0.00
4,040.0	12.85	282.78	3,974.6	133.8	-589.9	214.2	0.00	0.00	0.00

Database:	Landmark	Local Co-ordinate Reference:	Well SRC Gilbert 22-14-11CHZE
Company:	Synergy Resources	TVD Reference:	WELL @ 4847.0ft (RKB-12')
Project:	SEC.14-T5N-R66W	MD Reference:	WELL @ 4847.0ft (RKB-12')
Site:	SRC Gilbert 42-14-11NHZ Pad	North Reference:	True
	Sec.14-T5N-R66W		
Well:	SRC Gilbert 22-14-11CHZE	Survey Calculation Method:	Minimum Curvature
Wellbore:	Wellbore #1		
Design:	Plan #1 (7-30-13)		

Planned Survey									
Measured Depth (ft)	Inclination (°)	Azimuth (°)	Vertical Depth (ft)	+N/-S (ft)	+E/-W (ft)	Vertical Section (ft)	Dogleg Rate (°/100ft)	Build Rate (°/100ft)	Turn Rate (°/100ft)
4,080.0	12.85	282.78	4,013.6	135.8	-598.5	217.4	0.00	0.00	0.00
4,120.0	12.85	282.78	4,052.6	137.7	-607.2	220.5	0.00	0.00	0.00
4,160.0	12.85	282.78	4,091.6	139.7	-615.9	223.7	0.00	0.00	0.00
4,200.0	12.85	282.78	4,130.6	141.7	-624.6	226.8	0.00	0.00	0.00
4,240.0	12.85	282.78	4,169.6	143.6	-633.2	230.0	0.00	0.00	0.00
4,280.0	12.85	282.78	4,208.6	145.6	-641.9	233.1	0.00	0.00	0.00
4,320.0	12.85	282.78	4,247.6	147.6	-650.6	236.3	0.00	0.00	0.00
4,360.0	12.85	282.78	4,286.6	149.6	-659.3	239.4	0.00	0.00	0.00
4,400.0	12.85	282.78	4,325.6	151.5	-667.9	242.6	0.00	0.00	0.00
4,440.0	12.85	282.78	4,364.6	153.5	-676.6	245.7	0.00	0.00	0.00
4,480.0	12.85	282.78	4,403.6	155.5	-685.3	248.9	0.00	0.00	0.00
4,520.0	12.85	282.78	4,442.6	157.4	-693.9	252.0	0.00	0.00	0.00
4,560.0	12.85	282.78	4,481.6	159.4	-702.6	255.2	0.00	0.00	0.00
4,600.0	12.85	282.78	4,520.6	161.4	-711.3	258.3	0.00	0.00	0.00
4,640.0	12.85	282.78	4,559.6	163.3	-720.0	261.5	0.00	0.00	0.00
4,680.0	12.85	282.78	4,598.6	165.3	-728.6	264.6	0.00	0.00	0.00
4,720.0	12.85	282.78	4,637.6	167.3	-737.3	267.8	0.00	0.00	0.00
4,760.0	12.85	282.78	4,676.6	169.2	-746.0	270.9	0.00	0.00	0.00
4,800.0	12.85	282.78	4,715.6	171.2	-754.7	274.1	0.00	0.00	0.00
4,840.0	12.85	282.78	4,754.6	173.2	-763.3	277.2	0.00	0.00	0.00
4,880.0	12.85	282.78	4,793.6	175.1	-772.0	280.4	0.00	0.00	0.00
4,920.0	12.85	282.78	4,832.6	177.1	-780.7	283.5	0.00	0.00	0.00
4,960.0	12.85	282.78	4,871.6	179.1	-789.4	286.7	0.00	0.00	0.00
5,000.0	12.85	282.78	4,910.6	181.0	-798.0	289.8	0.00	0.00	0.00
5,040.0	12.85	282.78	4,949.6	183.0	-806.7	293.0	0.00	0.00	0.00
5,080.0	12.85	282.78	4,988.6	185.0	-815.4	296.1	0.00	0.00	0.00
5,120.0	12.85	282.78	5,027.6	186.9	-824.1	299.3	0.00	0.00	0.00
5,160.0	12.85	282.78	5,066.6	188.9	-832.7	302.4	0.00	0.00	0.00
5,200.0	12.85	282.78	5,105.6	190.9	-841.4	305.6	0.00	0.00	0.00
5,240.0	12.85	282.78	5,144.6	192.8	-850.1	308.7	0.00	0.00	0.00
5,280.0	12.85	282.78	5,183.6	194.8	-858.8	311.9	0.00	0.00	0.00
5,320.0	12.85	282.78	5,222.6	196.8	-867.4	315.0	0.00	0.00	0.00
5,360.0	12.85	282.78	5,261.6	198.7	-876.1	318.2	0.00	0.00	0.00
5,400.0	12.85	282.78	5,300.6	200.7	-884.8	321.3	0.00	0.00	0.00
5,440.0	12.85	282.78	5,339.6	202.7	-893.4	324.5	0.00	0.00	0.00
5,480.0	12.85	282.78	5,378.6	204.6	-902.1	327.6	0.00	0.00	0.00
5,520.0	12.85	282.78	5,417.6	206.6	-910.8	330.8	0.00	0.00	0.00
5,560.0	12.85	282.78	5,456.6	208.6	-919.5	333.9	0.00	0.00	0.00
5,600.0	12.85	282.78	5,495.6	210.5	-928.1	337.1	0.00	0.00	0.00
5,640.0	12.85	282.78	5,534.6	212.5	-936.8	340.2	0.00	0.00	0.00
5,680.0	12.85	282.78	5,573.5	214.5	-945.5	343.4	0.00	0.00	0.00
5,720.0	12.85	282.78	5,612.5	216.5	-954.2	346.5	0.00	0.00	0.00
5,760.0	12.85	282.78	5,651.5	218.4	-962.8	349.7	0.00	0.00	0.00
5,800.0	12.85	282.78	5,690.5	220.4	-971.5	352.8	0.00	0.00	0.00
5,840.0	12.85	282.78	5,729.5	222.4	-980.2	356.0	0.00	0.00	0.00
5,880.0	12.85	282.78	5,768.5	224.3	-988.9	359.1	0.00	0.00	0.00
5,920.0	12.85	282.78	5,807.5	226.3	-997.5	362.3	0.00	0.00	0.00
5,960.0	12.85	282.78	5,846.5	228.3	-1,006.2	365.4	0.00	0.00	0.00
6,000.0	12.85	282.78	5,885.5	230.2	-1,014.9	368.6	0.00	0.00	0.00
6,040.0	12.85	282.78	5,924.5	232.2	-1,023.6	371.7	0.00	0.00	0.00
6,079.4	12.85	282.78	5,963.0	234.1	-1,032.1	374.8	0.00	0.00	0.00
6,080.0	12.84	282.78	5,963.5	234.2	-1,032.2	374.9	2.00	-2.00	0.00
6,120.0	12.04	282.78	6,002.6	236.1	-1,040.6	377.9	2.00	-2.00	0.00

Database:	Landmark	Local Co-ordinate Reference:	Well SRC Gilbert 22-14-11CHZE
Company:	Synergy Resources	TVD Reference:	WELL @ 4847.0ft (RKB-12')
Project:	SEC.14-T5N-R66W	MD Reference:	WELL @ 4847.0ft (RKB-12')
Site:	SRC Gilbert 42-14-11NHZ Pad	North Reference:	True
	Sec.14-T5N-R66W		
Well:	SRC Gilbert 22-14-11CHZE	Survey Calculation Method:	Minimum Curvature
Wellbore:	Wellbore #1		
Design:	Plan #1 (7-30-13)		

Planned Survey									
Measured Depth (ft)	Inclination (°)	Azimuth (°)	Vertical Depth (ft)	+N/-S (ft)	+E/-W (ft)	Vertical Section (ft)	Dogleg Rate (°/100ft)	Build Rate (°/100ft)	Turn Rate (°/100ft)
6,160.0	11.24	282.78	6,041.8	237.9	-1,048.5	380.8	2.00	-2.00	0.00
6,200.0	10.44	282.78	6,081.1	239.5	-1,055.8	383.5	2.00	-2.00	0.00
6,240.0	9.64	282.78	6,120.4	241.1	-1,062.6	385.9	2.00	-2.00	0.00
6,280.0	8.84	282.78	6,159.9	242.5	-1,068.9	388.2	2.00	-2.00	0.00
6,320.0	8.04	282.78	6,199.5	243.8	-1,074.6	390.3	2.00	-2.00	0.00
6,360.0	7.24	282.78	6,239.1	245.0	-1,079.8	392.2	2.00	-2.00	0.00
6,400.0	6.44	282.78	6,278.9	246.0	-1,084.4	393.9	2.00	-2.00	0.00
6,440.0	5.64	282.78	6,318.6	246.9	-1,088.5	395.3	2.00	-2.00	0.00
6,480.0	4.84	282.78	6,358.5	247.7	-1,092.1	396.6	2.00	-2.00	0.00
6,520.0	4.04	282.78	6,398.3	248.4	-1,095.1	397.7	2.00	-2.00	0.00
6,560.0	3.24	282.78	6,438.3	249.0	-1,097.6	398.6	2.00	-2.00	0.00
6,600.0	2.44	282.78	6,478.2	249.4	-1,099.5	399.3	2.00	-2.00	0.00
6,640.0	1.64	282.78	6,518.2	249.7	-1,100.9	399.8	2.00	-2.00	0.00
6,680.0	0.84	282.78	6,558.2	249.9	-1,101.8	400.1	2.00	-2.00	0.00
6,720.0	0.04	282.78	6,598.2	250.0	-1,102.1	400.2	2.00	-2.00	0.00
6,721.8	0.00	0.00	6,600.0	250.0	-1,102.1	400.3	2.00	-2.00	0.00
6,760.0	0.00	0.00	6,638.2	250.0	-1,102.1	400.3	0.00	0.00	0.00
6,800.0	0.00	0.00	6,678.2	250.0	-1,102.1	400.3	0.00	0.00	0.00
6,840.0	0.00	0.00	6,718.2	250.0	-1,102.1	400.3	0.00	0.00	0.00
6,853.6	0.00	0.00	6,731.8	250.0	-1,102.1	400.3	0.00	0.00	0.00
KOP #2									
6,880.0	2.11	360.00	6,758.2	250.5	-1,102.1	400.7	7.99	7.99	0.00
6,920.0	5.31	360.00	6,798.1	253.1	-1,102.1	403.3	8.00	8.00	0.00
6,960.0	8.51	360.00	6,837.8	257.9	-1,102.1	408.1	8.00	8.00	0.00
7,000.0	11.71	360.00	6,877.2	264.9	-1,102.1	415.0	8.00	8.00	0.00
7,040.0	14.91	360.00	6,916.1	274.1	-1,102.1	424.1	8.00	8.00	0.00
7,080.0	18.11	360.00	6,954.4	285.5	-1,102.1	435.4	8.00	8.00	0.00
7,120.0	21.31	360.00	6,992.1	299.0	-1,102.1	448.7	8.00	8.00	0.00
7,160.0	24.51	360.00	7,028.9	314.5	-1,102.1	464.2	8.00	8.00	0.00
7,200.0	27.71	360.00	7,064.8	332.1	-1,102.1	481.6	8.00	8.00	0.00
7,240.0	30.91	360.00	7,099.7	351.7	-1,102.1	501.0	8.00	8.00	0.00
7,280.0	34.11	360.00	7,133.4	373.2	-1,102.1	522.3	8.00	8.00	0.00
7,320.0	37.31	360.00	7,165.9	396.6	-1,102.1	545.4	8.00	8.00	0.00
7,360.0	40.51	360.00	7,197.0	421.7	-1,102.1	570.3	8.00	8.00	0.00
7,400.0	43.71	360.00	7,226.7	448.5	-1,102.1	596.8	8.00	8.00	0.00
7,440.0	46.91	360.00	7,254.8	476.9	-1,102.1	625.0	8.00	8.00	0.00
7,480.0	50.11	360.00	7,281.3	506.9	-1,102.1	654.7	8.00	8.00	0.00
7,520.0	53.31	360.00	7,306.1	538.3	-1,102.1	685.8	8.00	8.00	0.00
7,560.0	56.51	360.00	7,329.1	571.0	-1,102.1	718.2	8.00	8.00	0.00
7,600.0	59.71	360.00	7,350.2	605.0	-1,102.1	751.8	8.00	8.00	0.00
7,640.0	62.91	360.00	7,369.4	640.1	-1,102.1	786.5	8.00	8.00	0.00
7,680.0	66.11	360.00	7,386.6	676.2	-1,102.1	822.3	8.00	8.00	0.00
7,720.0	69.31	360.00	7,401.8	713.2	-1,102.1	858.9	8.00	8.00	0.00
7,760.0	72.51	360.00	7,414.9	751.0	-1,102.1	896.4	8.00	8.00	0.00
7,800.0	75.71	360.00	7,425.8	789.4	-1,102.1	934.5	8.00	8.00	0.00
7,840.0	78.91	360.00	7,434.6	828.4	-1,102.1	973.1	8.00	8.00	0.00
7,880.0	82.11	360.00	7,441.2	867.9	-1,102.1	1,012.2	8.00	8.00	0.00
7,920.0	85.31	360.00	7,445.6	907.6	-1,102.1	1,051.5	8.00	8.00	0.00
7,960.0	88.51	360.00	7,447.8	947.6	-1,102.1	1,091.1	8.00	8.00	0.00
7,978.6	90.00	360.00	7,448.0	966.2	-1,102.1	1,109.5	8.00	8.00	0.00
End of Build - 7"									
8,000.0	90.00	360.00	7,448.0	987.6	-1,102.1	1,130.7	0.01	0.01	0.00
8,040.0	90.00	360.00	7,448.0	1,027.6	-1,102.1	1,170.3	0.00	0.00	0.00

Database:	Landmark	Local Co-ordinate Reference:	Well SRC Gilbert 22-14-11CHZE
Company:	Synergy Resources	TVD Reference:	WELL @ 4847.0ft (RKB-12')
Project:	SEC.14-T5N-R66W	MD Reference:	WELL @ 4847.0ft (RKB-12')
Site:	SRC Gilbert 42-14-11NHZ Pad Sec.14-T5N-R66W	North Reference:	True
Well:	SRC Gilbert 22-14-11CHZE	Survey Calculation Method:	Minimum Curvature
Wellbore:	Wellbore #1		
Design:	Plan #1 (7-30-13)		

Planned Survey									
Measured Depth (ft)	Inclination (°)	Azimuth (°)	Vertical Depth (ft)	+N/-S (ft)	+E/-W (ft)	Vertical Section (ft)	Dogleg Rate (°/100ft)	Build Rate (°/100ft)	Turn Rate (°/100ft)
8,080.0	90.00	360.00	7,448.0	1,067.6	-1,102.1	1,209.9	0.00	0.00	0.00
8,120.0	90.00	360.00	7,448.0	1,107.6	-1,102.1	1,249.6	0.00	0.00	0.00
8,160.0	90.00	360.00	7,448.0	1,147.6	-1,102.1	1,289.2	0.00	0.00	0.00
8,200.0	90.00	360.00	7,448.0	1,187.6	-1,102.1	1,328.8	0.00	0.00	0.00
8,240.0	90.00	360.00	7,448.0	1,227.6	-1,102.1	1,368.4	0.00	0.00	0.00
8,280.0	90.00	360.00	7,448.0	1,267.6	-1,102.1	1,408.0	0.00	0.00	0.00
8,320.0	90.00	360.00	7,448.0	1,307.6	-1,102.1	1,447.6	0.00	0.00	0.00
8,360.0	90.00	360.00	7,448.0	1,347.6	-1,102.1	1,487.2	0.00	0.00	0.00
8,400.0	90.00	360.00	7,448.0	1,387.6	-1,102.1	1,526.9	0.00	0.00	0.00
8,440.0	90.00	360.00	7,448.0	1,427.6	-1,102.1	1,566.5	0.00	0.00	0.00
8,480.0	90.00	360.00	7,448.0	1,467.6	-1,102.1	1,606.1	0.00	0.00	0.00
8,520.0	90.00	360.00	7,448.0	1,507.6	-1,102.1	1,645.7	0.00	0.00	0.00
8,560.0	90.00	360.00	7,448.0	1,547.6	-1,102.1	1,685.3	0.00	0.00	0.00
8,600.0	90.00	360.00	7,448.0	1,587.6	-1,102.1	1,724.9	0.00	0.00	0.00
8,640.0	90.00	360.00	7,448.0	1,627.6	-1,102.1	1,764.5	0.00	0.00	0.00
8,680.0	90.00	360.00	7,448.0	1,667.6	-1,102.1	1,804.2	0.00	0.00	0.00
8,720.0	90.00	360.00	7,448.0	1,707.6	-1,102.1	1,843.8	0.00	0.00	0.00
8,760.0	90.00	360.00	7,448.0	1,747.6	-1,102.1	1,883.4	0.00	0.00	0.00
8,800.0	90.00	360.00	7,448.0	1,787.6	-1,102.1	1,923.0	0.00	0.00	0.00
8,840.0	90.00	360.00	7,448.0	1,827.6	-1,102.1	1,962.6	0.00	0.00	0.00
8,880.0	90.00	360.00	7,448.0	1,867.6	-1,102.1	2,002.2	0.00	0.00	0.00
8,920.0	90.00	360.00	7,448.0	1,907.6	-1,102.1	2,041.8	0.00	0.00	0.00
8,960.0	90.00	360.00	7,448.0	1,947.6	-1,102.1	2,081.5	0.00	0.00	0.00
9,000.0	90.00	360.00	7,448.0	1,987.6	-1,102.1	2,121.1	0.00	0.00	0.00
9,040.0	90.00	360.00	7,448.0	2,027.6	-1,102.1	2,160.7	0.00	0.00	0.00
9,080.0	90.00	360.00	7,448.0	2,067.6	-1,102.1	2,200.3	0.00	0.00	0.00
9,120.0	90.00	360.00	7,448.0	2,107.6	-1,102.1	2,239.9	0.00	0.00	0.00
9,160.0	90.00	360.00	7,448.0	2,147.6	-1,102.1	2,279.5	0.00	0.00	0.00
9,200.0	90.00	360.00	7,448.0	2,187.6	-1,102.1	2,319.1	0.00	0.00	0.00
9,240.0	90.00	360.00	7,448.0	2,227.6	-1,102.1	2,358.8	0.00	0.00	0.00
9,280.0	90.00	360.00	7,448.0	2,267.6	-1,102.1	2,398.4	0.00	0.00	0.00
9,320.0	90.00	360.00	7,448.0	2,307.6	-1,102.1	2,438.0	0.00	0.00	0.00
9,360.0	90.00	360.00	7,448.0	2,347.6	-1,102.1	2,477.6	0.00	0.00	0.00
9,400.0	90.00	360.00	7,448.0	2,387.6	-1,102.1	2,517.2	0.00	0.00	0.00
9,440.0	90.00	360.00	7,448.0	2,427.6	-1,102.1	2,556.8	0.00	0.00	0.00
9,480.0	90.00	360.00	7,448.0	2,467.6	-1,102.1	2,596.4	0.00	0.00	0.00
9,520.0	90.00	360.00	7,448.0	2,507.6	-1,102.1	2,636.1	0.00	0.00	0.00
9,560.0	90.00	360.00	7,448.0	2,547.6	-1,102.1	2,675.7	0.00	0.00	0.00
9,600.0	90.00	360.00	7,448.0	2,587.6	-1,102.1	2,715.3	0.00	0.00	0.00
9,640.0	90.00	360.00	7,448.0	2,627.6	-1,102.1	2,754.9	0.00	0.00	0.00
9,680.0	90.00	360.00	7,448.0	2,667.6	-1,102.1	2,794.5	0.00	0.00	0.00
9,720.0	90.00	360.00	7,448.0	2,707.6	-1,102.1	2,834.1	0.00	0.00	0.00
9,760.0	90.00	360.00	7,448.0	2,747.6	-1,102.1	2,873.7	0.00	0.00	0.00
9,800.0	90.00	360.00	7,448.0	2,787.6	-1,102.1	2,913.4	0.00	0.00	0.00
9,840.0	90.00	360.00	7,448.0	2,827.6	-1,102.1	2,953.0	0.00	0.00	0.00
9,880.0	90.00	360.00	7,448.0	2,867.6	-1,102.1	2,992.6	0.00	0.00	0.00
9,920.0	90.00	360.00	7,448.0	2,907.6	-1,102.1	3,032.2	0.00	0.00	0.00
9,960.0	90.00	360.00	7,448.0	2,947.6	-1,102.1	3,071.8	0.00	0.00	0.00
10,000.0	90.00	360.00	7,448.0	2,987.6	-1,102.1	3,111.4	0.00	0.00	0.00
10,040.0	90.00	360.00	7,448.0	3,027.6	-1,102.1	3,151.0	0.00	0.00	0.00
10,080.0	90.00	360.00	7,448.0	3,067.6	-1,102.1	3,190.7	0.00	0.00	0.00
10,120.0	90.00	360.00	7,448.0	3,107.6	-1,102.1	3,230.3	0.00	0.00	0.00
10,160.0	90.00	360.00	7,448.0	3,147.6	-1,102.1	3,269.9	0.00	0.00	0.00

Database:	Landmark	Local Co-ordinate Reference:	Well SRC Gilbert 22-14-11CHZE
Company:	Synergy Resources	TVD Reference:	WELL @ 4847.0ft (RKB-12')
Project:	SEC.14-T5N-R66W	MD Reference:	WELL @ 4847.0ft (RKB-12')
Site:	SRC Gilbert 42-14-11NHZ Pad Sec.14-T5N-R66W	North Reference:	True
Well:	SRC Gilbert 22-14-11CHZE	Survey Calculation Method:	Minimum Curvature
Wellbore:	Wellbore #1		
Design:	Plan #1 (7-30-13)		

Planned Survey									
Measured Depth (ft)	Inclination (°)	Azimuth (°)	Vertical Depth (ft)	+N/-S (ft)	+E/-W (ft)	Vertical Section (ft)	Dogleg Rate (°/100ft)	Build Rate (°/100ft)	Turn Rate (°/100ft)
10,200.0	90.00	360.00	7,448.0	3,187.6	-1,102.1	3,309.5	0.00	0.00	0.00
10,240.0	90.00	360.00	7,448.0	3,227.6	-1,102.1	3,349.1	0.00	0.00	0.00
10,280.0	90.00	360.00	7,448.0	3,267.6	-1,102.1	3,388.7	0.00	0.00	0.00
10,320.0	90.00	360.00	7,448.0	3,307.6	-1,102.1	3,428.3	0.00	0.00	0.00
10,360.0	90.00	360.00	7,448.0	3,347.6	-1,102.1	3,468.0	0.00	0.00	0.00
10,400.0	90.00	360.00	7,448.0	3,387.6	-1,102.1	3,507.6	0.00	0.00	0.00
10,440.0	90.00	360.00	7,448.0	3,427.6	-1,102.1	3,547.2	0.00	0.00	0.00
10,480.0	90.00	360.00	7,448.0	3,467.6	-1,102.1	3,586.8	0.00	0.00	0.00
10,520.0	90.00	360.00	7,448.0	3,507.6	-1,102.1	3,626.4	0.00	0.00	0.00
10,560.0	90.00	360.00	7,448.0	3,547.6	-1,102.1	3,666.0	0.00	0.00	0.00
10,600.0	90.00	360.00	7,448.0	3,587.6	-1,102.1	3,705.6	0.00	0.00	0.00
10,640.0	90.00	360.00	7,448.0	3,627.6	-1,102.1	3,745.3	0.00	0.00	0.00
10,680.0	90.00	360.00	7,448.0	3,667.6	-1,102.1	3,784.9	0.00	0.00	0.00
10,720.0	90.00	360.00	7,448.0	3,707.6	-1,102.1	3,824.5	0.00	0.00	0.00
10,760.0	90.00	360.00	7,448.0	3,747.6	-1,102.1	3,864.1	0.00	0.00	0.00
10,800.0	90.00	360.00	7,448.0	3,787.6	-1,102.1	3,903.7	0.00	0.00	0.00
10,840.0	90.00	360.00	7,448.0	3,827.6	-1,102.1	3,943.3	0.00	0.00	0.00
10,880.0	90.00	360.00	7,448.0	3,867.6	-1,102.1	3,982.9	0.00	0.00	0.00
10,920.0	90.00	360.00	7,448.0	3,907.6	-1,102.1	4,022.6	0.00	0.00	0.00
10,960.0	90.00	360.00	7,448.0	3,947.6	-1,102.1	4,062.2	0.00	0.00	0.00
11,000.0	90.00	360.00	7,448.0	3,987.6	-1,102.1	4,101.8	0.00	0.00	0.00
11,040.0	90.00	360.00	7,448.0	4,027.6	-1,102.1	4,141.4	0.00	0.00	0.00
11,080.0	90.00	360.00	7,448.0	4,067.6	-1,102.1	4,181.0	0.00	0.00	0.00
11,120.0	90.00	360.00	7,448.0	4,107.6	-1,102.1	4,220.6	0.00	0.00	0.00
11,160.0	90.00	360.00	7,448.0	4,147.6	-1,102.1	4,260.2	0.00	0.00	0.00
11,200.0	90.00	360.00	7,448.0	4,187.6	-1,102.1	4,299.9	0.00	0.00	0.00
11,240.0	90.00	360.00	7,448.0	4,227.6	-1,102.1	4,339.5	0.00	0.00	0.00
11,280.0	90.00	360.00	7,448.0	4,267.6	-1,102.1	4,379.1	0.00	0.00	0.00
11,320.0	90.00	360.00	7,448.0	4,307.6	-1,102.1	4,418.7	0.00	0.00	0.00
11,360.0	90.00	360.00	7,448.0	4,347.6	-1,102.1	4,458.3	0.00	0.00	0.00
11,400.0	90.00	360.00	7,448.0	4,387.6	-1,102.1	4,497.9	0.00	0.00	0.00
11,440.0	90.00	360.00	7,448.0	4,427.6	-1,102.1	4,537.5	0.00	0.00	0.00
11,480.0	90.00	360.00	7,448.0	4,467.6	-1,102.1	4,577.2	0.00	0.00	0.00
11,520.0	90.00	360.00	7,448.0	4,507.6	-1,102.1	4,616.8	0.00	0.00	0.00
11,560.0	90.00	360.00	7,448.0	4,547.6	-1,102.1	4,656.4	0.00	0.00	0.00
11,600.0	90.00	360.00	7,448.0	4,587.6	-1,102.1	4,696.0	0.00	0.00	0.00
11,640.0	90.00	360.00	7,448.0	4,627.6	-1,102.1	4,735.6	0.00	0.00	0.00
11,680.0	90.00	360.00	7,448.0	4,667.6	-1,102.1	4,775.2	0.00	0.00	0.00
11,720.0	90.00	360.00	7,448.0	4,707.6	-1,102.1	4,814.8	0.00	0.00	0.00
11,760.0	90.00	360.00	7,448.0	4,747.6	-1,102.1	4,854.5	0.00	0.00	0.00
11,800.0	90.00	360.00	7,448.0	4,787.6	-1,102.1	4,894.1	0.00	0.00	0.00
11,840.0	90.00	360.00	7,448.0	4,827.6	-1,102.1	4,933.7	0.00	0.00	0.00
11,880.0	90.00	360.00	7,448.0	4,867.6	-1,102.1	4,973.3	0.00	0.00	0.00
11,920.0	90.00	360.00	7,448.0	4,907.6	-1,102.1	5,012.9	0.00	0.00	0.00
11,960.0	90.00	360.00	7,448.0	4,947.6	-1,102.1	5,052.5	0.00	0.00	0.00
12,000.0	90.00	360.00	7,448.0	4,987.6	-1,102.1	5,092.2	0.00	0.00	0.00
12,040.0	90.00	360.00	7,448.0	5,027.6	-1,102.1	5,131.8	0.00	0.00	0.00
12,080.0	90.00	360.00	7,448.0	5,067.6	-1,102.1	5,171.4	0.00	0.00	0.00
12,120.0	90.00	360.00	7,448.0	5,107.6	-1,102.1	5,211.0	0.00	0.00	0.00
12,160.0	90.00	360.00	7,448.0	5,147.6	-1,102.1	5,250.6	0.00	0.00	0.00
12,200.0	90.00	360.00	7,448.0	5,187.6	-1,102.1	5,290.2	0.00	0.00	0.00
12,240.0	90.00	360.00	7,448.0	5,227.6	-1,102.1	5,329.8	0.00	0.00	0.00
12,280.0	90.00	360.00	7,448.0	5,267.6	-1,102.1	5,369.5	0.00	0.00	0.00

Database:	Landmark	Local Co-ordinate Reference:	Well SRC Gilbert 22-14-11CHZE
Company:	Synergy Resources	TVD Reference:	WELL @ 4847.0ft (RKB-12')
Project:	SEC.14-T5N-R66W	MD Reference:	WELL @ 4847.0ft (RKB-12')
Site:	SRC Gilbert 42-14-11NHZ Pad	North Reference:	True
	Sec.14-T5N-R66W		
Well:	SRC Gilbert 22-14-11CHZE	Survey Calculation Method:	Minimum Curvature
Wellbore:	Wellbore #1		
Design:	Plan #1 (7-30-13)		

Planned Survey									
Measured Depth (ft)	Inclination (°)	Azimuth (°)	Vertical Depth (ft)	+N/-S (ft)	+E/-W (ft)	Vertical Section (ft)	Dogleg Rate (°/100ft)	Build Rate (°/100ft)	Turn Rate (°/100ft)
12,320.0	90.00	360.00	7,448.0	5,307.6	-1,102.1	5,409.1	0.00	0.00	0.00
12,360.0	90.00	360.00	7,448.0	5,347.6	-1,102.1	5,448.7	0.00	0.00	0.00
12,400.0	90.00	360.00	7,448.0	5,387.6	-1,102.1	5,488.3	0.00	0.00	0.00
12,440.0	90.00	360.00	7,448.0	5,427.6	-1,102.1	5,527.9	0.00	0.00	0.00
12,480.0	90.00	360.00	7,448.0	5,467.6	-1,102.1	5,567.5	0.00	0.00	0.00
12,520.0	90.00	360.00	7,448.0	5,507.6	-1,102.1	5,607.1	0.00	0.00	0.00
12,560.0	90.00	360.00	7,448.0	5,547.6	-1,102.1	5,646.8	0.00	0.00	0.00
12,600.0	90.00	360.00	7,448.0	5,587.6	-1,102.1	5,686.4	0.00	0.00	0.00
12,640.0	90.00	360.00	7,448.0	5,627.6	-1,102.1	5,726.0	0.00	0.00	0.00
12,680.0	90.00	360.00	7,448.0	5,667.6	-1,102.1	5,765.6	0.00	0.00	0.00
12,720.0	90.00	360.00	7,448.0	5,707.6	-1,102.1	5,805.2	0.00	0.00	0.00
12,760.0	90.00	360.00	7,448.0	5,747.6	-1,102.1	5,844.8	0.00	0.00	0.00
12,800.0	90.00	360.00	7,448.0	5,787.6	-1,102.1	5,884.4	0.00	0.00	0.00
12,840.0	90.00	360.00	7,448.0	5,827.6	-1,102.1	5,924.1	0.00	0.00	0.00
12,880.0	90.00	360.00	7,448.0	5,867.6	-1,102.1	5,963.7	0.00	0.00	0.00
12,920.0	90.00	360.00	7,448.0	5,907.6	-1,102.1	6,003.3	0.00	0.00	0.00
12,960.0	90.00	360.00	7,448.0	5,947.6	-1,102.1	6,042.9	0.00	0.00	0.00
13,000.0	90.00	360.00	7,448.0	5,987.6	-1,102.1	6,082.5	0.00	0.00	0.00
13,040.0	90.00	360.00	7,448.0	6,027.6	-1,102.1	6,122.1	0.00	0.00	0.00
13,080.0	90.00	360.00	7,448.0	6,067.6	-1,102.1	6,161.7	0.00	0.00	0.00
13,120.0	90.00	360.00	7,448.0	6,107.6	-1,102.1	6,201.4	0.00	0.00	0.00
13,160.0	90.00	360.00	7,448.0	6,147.6	-1,102.1	6,241.0	0.00	0.00	0.00
13,200.0	90.00	360.00	7,448.0	6,187.6	-1,102.1	6,280.6	0.00	0.00	0.00
13,240.0	90.00	360.00	7,448.0	6,227.6	-1,102.1	6,320.2	0.00	0.00	0.00
13,280.0	90.00	360.00	7,448.0	6,267.6	-1,102.1	6,359.8	0.00	0.00	0.00
13,320.0	90.00	360.00	7,448.0	6,307.6	-1,102.1	6,399.4	0.00	0.00	0.00
13,360.0	90.00	360.00	7,448.0	6,347.6	-1,102.1	6,439.0	0.00	0.00	0.00
13,400.0	90.00	360.00	7,448.0	6,387.6	-1,102.1	6,478.7	0.00	0.00	0.00
13,440.0	90.00	360.00	7,448.0	6,427.6	-1,102.1	6,518.3	0.00	0.00	0.00
13,480.0	90.00	360.00	7,448.0	6,467.6	-1,102.1	6,557.9	0.00	0.00	0.00
13,520.0	90.00	360.00	7,448.0	6,507.6	-1,102.1	6,597.5	0.00	0.00	0.00
13,560.0	90.00	360.00	7,448.0	6,547.6	-1,102.1	6,637.1	0.00	0.00	0.00
13,600.0	90.00	360.00	7,448.0	6,587.6	-1,102.1	6,676.7	0.00	0.00	0.00
13,640.0	90.00	360.00	7,448.0	6,627.6	-1,102.1	6,716.3	0.00	0.00	0.00
13,680.0	90.00	360.00	7,448.0	6,667.6	-1,102.1	6,756.0	0.00	0.00	0.00
13,720.0	90.00	360.00	7,448.0	6,707.6	-1,102.1	6,795.6	0.00	0.00	0.00
13,760.0	90.00	360.00	7,448.0	6,747.6	-1,102.1	6,835.2	0.00	0.00	0.00
13,800.0	90.00	360.00	7,448.0	6,787.6	-1,102.1	6,874.8	0.00	0.00	0.00
13,840.0	90.00	360.00	7,448.0	6,827.6	-1,102.1	6,914.4	0.00	0.00	0.00
13,880.0	90.00	360.00	7,448.0	6,867.6	-1,102.1	6,954.0	0.00	0.00	0.00
13,920.0	90.00	360.00	7,448.0	6,907.6	-1,102.1	6,993.6	0.00	0.00	0.00
13,960.0	90.00	360.00	7,448.0	6,947.6	-1,102.1	7,033.3	0.00	0.00	0.00
14,000.0	90.00	360.00	7,448.0	6,987.6	-1,102.1	7,072.9	0.00	0.00	0.00
14,040.0	90.00	360.00	7,448.0	7,027.6	-1,102.1	7,112.5	0.00	0.00	0.00
14,080.0	90.00	360.00	7,448.0	7,067.6	-1,102.1	7,152.1	0.00	0.00	0.00
14,120.0	90.00	360.00	7,448.0	7,107.6	-1,102.1	7,191.7	0.00	0.00	0.00
14,160.0	90.00	360.00	7,448.0	7,147.6	-1,102.1	7,231.3	0.00	0.00	0.00
14,200.0	90.00	360.00	7,448.0	7,187.6	-1,102.1	7,270.9	0.00	0.00	0.00
14,240.0	90.00	360.00	7,448.0	7,227.6	-1,102.1	7,310.6	0.00	0.00	0.00
14,280.0	90.00	360.00	7,448.0	7,267.6	-1,102.1	7,350.2	0.00	0.00	0.00
14,320.0	90.00	360.00	7,448.0	7,307.6	-1,102.1	7,389.8	0.00	0.00	0.00
14,360.0	90.00	360.00	7,448.0	7,347.6	-1,102.1	7,429.4	0.00	0.00	0.00
14,400.0	90.00	360.00	7,448.0	7,387.6	-1,102.1	7,469.0	0.00	0.00	0.00

Plan Annotations					
	Measured Depth (ft)	Vertical Depth (ft)	Local Coordinates		Comment
			+N/-S	+E/-W	
			(ft)	(ft)	
	1,000.0	1,000.0	0.0	0.0	KOP #1
	6,853.6	6,731.8	250.0	-1,102.1	KOP #2
	7,978.6	7,448.0	966.2	-1,102.1	End of Build