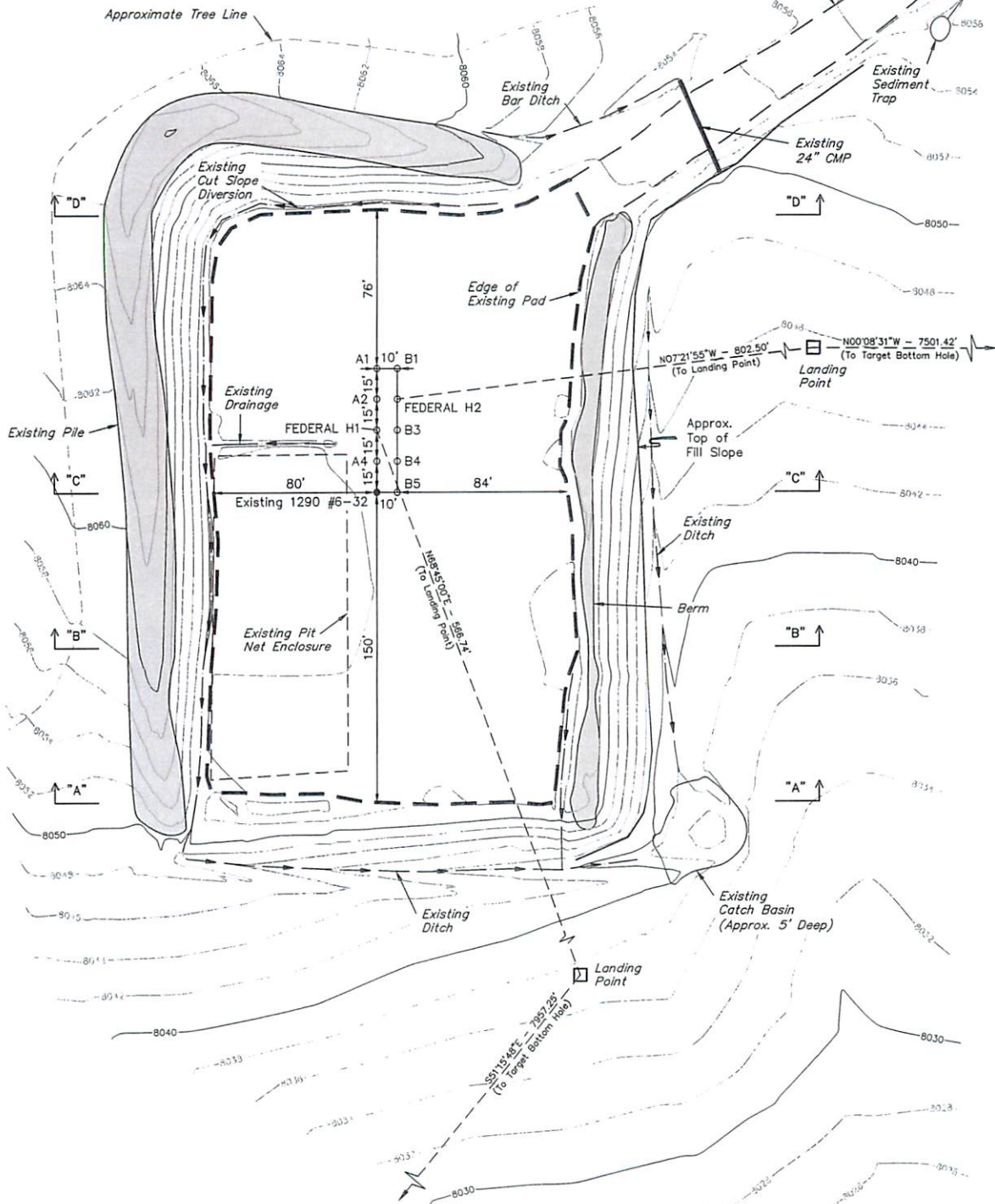


AS-BUILT SITE PLAN FOR
JACOBS FEDERAL 1290 #6-32 H1 & 1290 #6-32 H2
ON EXISTING 1290 #6-32 PAD
SECTION 6, T12S, R90W, 6th P.M.
SW 1/4 NE 1/4 (H.E.S. No. 253)

SCALE

FIGURE #1



FINISHED GRADE ELEV. AT B5 LOC. STAKE = 8052.2'

UINTAH ENGINEERING & LAND SURVEYING
85 So. 200 East • Vernal, Utah 84078 • (435) 789-1017

1" = 20'
 X-Section
 Scale
 1" = 50'
 DATE: 05-25-13
 DRAWN BY: T.B.

GUNNISON ENERGY CORPORATION
 CONSTRUCTION LAYOUT CROSS SECTION FOR
 JACOBS FEDERAL 1290 #6-32 H1 & 1290 #6-32 H2
 ON EXISTING 1290 #6-32 PAD
 SECTION 6, T12S, R90W, 6th P.M.
 SW 1/4 NE 1/4 (H.E.S. No. 253)

FIGURE #2

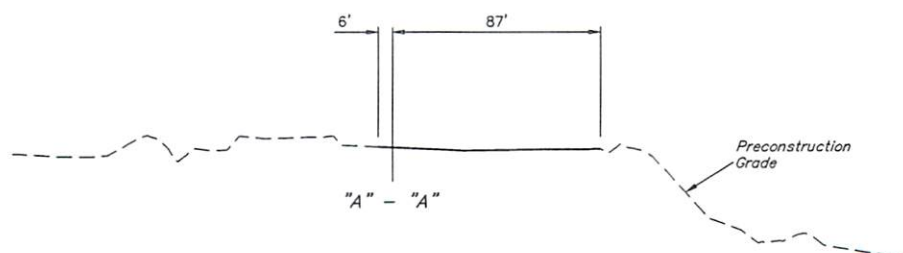
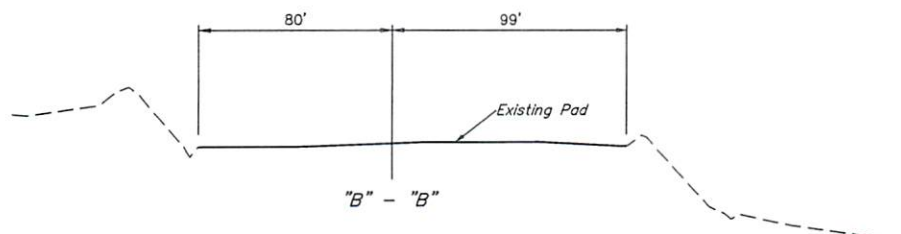
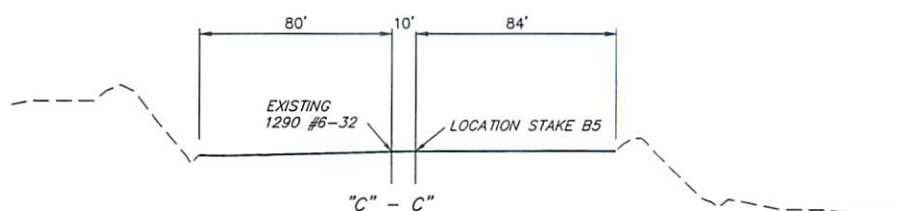
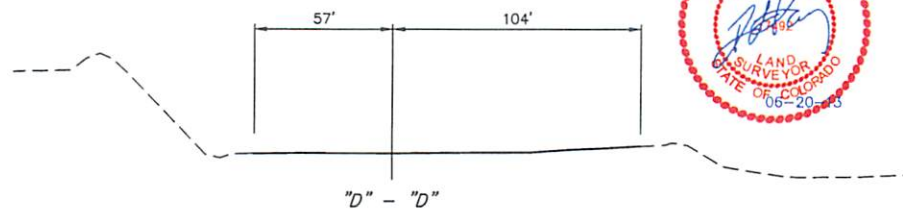
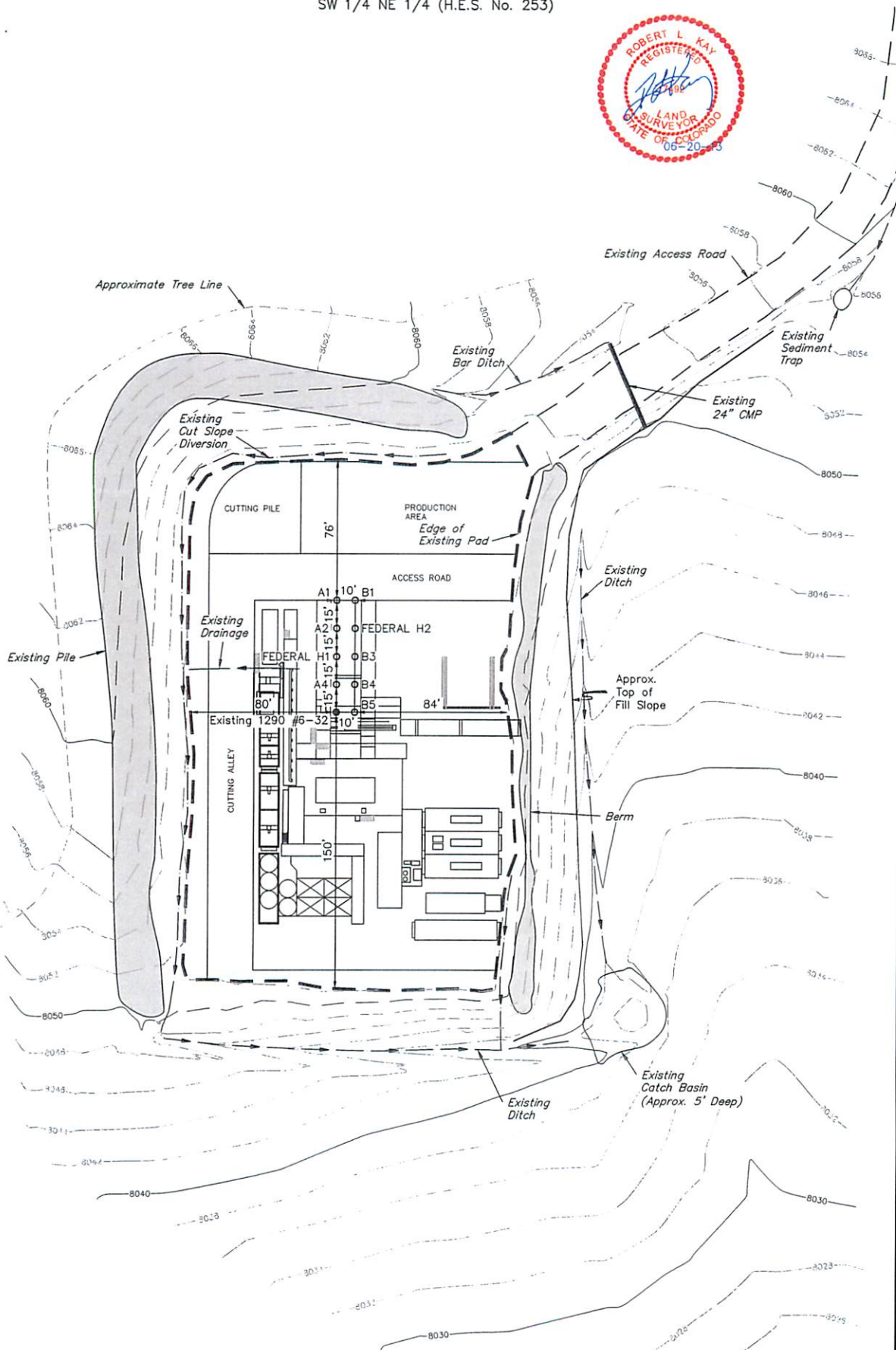


FIGURE #3



UINTAH ENGINEERING & LAND SURVEYING
85 So. 200 East • Vernal, Utah 84078 • (435) 789-1017



DATE: 05-25-13
DRAWN BY: T.B.

GUNNISON ENERGY CORPORATION

RECLAMATION DIAGRAM FOR

JACOBS FEDERAL 1290 #6-32 H1 & 1290 #6-32 H2

ON EXISTING 1290 #6-32 PAD

SECTION 6, T12S, R90W, 6th P.M.

SW 1/4 NE 1/4 (H.E.S. No. 253)

50' 25' 0' 50'

SCALE

FIGURE #4



 RECLAIMED AREA

APPROXIMATE ACREAGE
TOTAL RECLAIMED AREA = ± 0.884 ACRES
UN-RECLAIMED AREA = ± 1.151 ACRES

UINTAH ENGINEERING & LAND SURVEYING
85 So. 200 East • Vernal, Utah 84078 • (435) 789-1017

