

DATE: 05-25-13
DRAWN BY: T.B.

GUNNISON ENERGY CORPORATION
LOCATION DRAWING FOR
JACOBS FEDERAL 1290 #6-32 H1 & 1290 #6-32 H2
ON EXISTING 1290 #6-32 PAD
SECTION 6, T12S, R90W, 6th P.M.
SW 1/4 NE 1/4 (H.E.S. No. 253)

200' 100' 0' 200'
SCALE
FIGURE #5



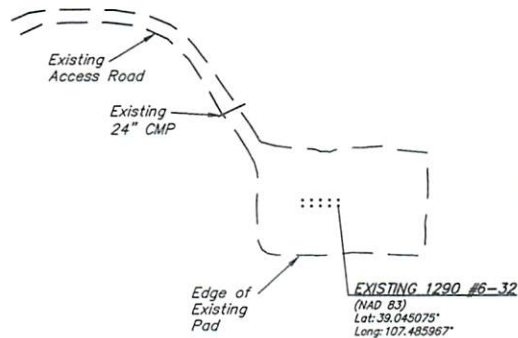
U.S. FOREST SERVICE

Tract Line

1/16 Section Line

H.E.S. 253

1/4 Section Line



OWEN L. JACOBS &
VAUNA LEE REVOCABLE TRUST

Tract Line

U.S. FOREST SERVICE

1/4 Section Line

Existing Features	(Distance from 1290 #6-32)
Building	S55°W 8,783'
Public Road (CR 1)	S76°W 1,096'
Property Line	S79°W 1,052'
Utility	S55°W 8,783'
Railroad	S08°E 8.1 MILES
Surface Water	N52°E 944'
Water Well	MORE THAN 1 MILE

FUTURE LAND USE

CROP LAND: ☐ IRRIGATED ☐ DRY LAND ☐ IMPROVED PASTURE ☐ HAY MEADOW ☐ CRP
NON-CROP LAND: ☒ RANGELAND ☐ TIMBER ☐ RECREATIONAL ☐ OTHER (Describe)
SUBDIVIDED: ☐ INDUSTRIAL ☐ COMMERCIAL ☐ RESIDENTIAL

PLANT COMMUNITY

☐ DISTURBED GRASSLAND
☐ NATIVE GRASSLAND
☐ SHRUB LAND
☐ PLAINS RIPARIAN
☐ MOUNTAIN RIPARIAN
☒ FOREST LAND
☐ WETLANDS AQUATIC
☐ ALPINE
☐ OTHER (Describe):

CURRENT LAND USE

CROP LAND: ☐ IRRIGATED ☐ DRY LAND ☐ IMPROVED PASTURE ☐ HAY MEADOW ☐ CRP
NON-CROP LAND: ☒ RANGELAND ☐ TIMBER ☐ RECREATIONAL ☐ OTHER (Describe)
SUBDIVIDED: ☐ INDUSTRIAL ☐ COMMERCIAL ☐ RESIDENTIAL



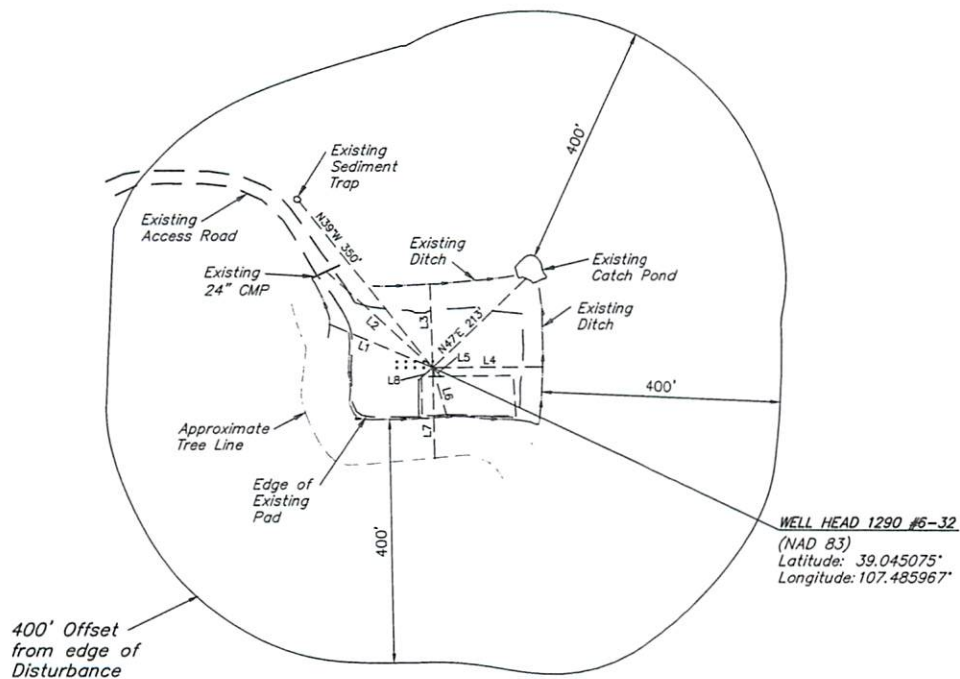
DATE: 05-25-13
DRAWN BY: T.B.

GUNNISON ENERGY CORPORATION
LOCATION DRAWING DETAIL FOR
JACOBS FEDERAL 1290 #6-32 H1 & 1290 #6-32 H2
ON EXISTING 1290 #6-32 PAD
SECTION 6, T12S, R90W, 6th P.M.
SW 1/4 NE 1/4 (H.E.S. No. 253)



SCALE

FIGURE #5A



LINE TABLE		
LINE	DIRECTION	LENGTH
L1	N67°20'32"W	186.05'
L2	N48°19'33"W	237.71'
L3	N02°13'30"W	136.81'
L4	N89°37'40"E	183.59'
L5	S43°25'08"E	20.02'
L6	S16°48'20"E	80.97'
L7	S01°41'44"E	149.18'
L8	S48°25'48"W	30.91'

SURFACE USE OF LOCATION IS
GRAZING, VEGETATION CONSISTS
MAINLY OF ASPEN, WILLOWS,
SAGEBRUSH, & NATIVE GRASSES.