

GUNNISON ENERGY CORPORATION
JACOBS FEDERAL 1290 #6-32 H1 & 1290 #6-32 H2
ON EXISTING 1290 #6-32 PAD
LOCATED IN GUNNISON COUNTY, COLORADO
SECTION 6, T12S, R90W, 6th P.M.

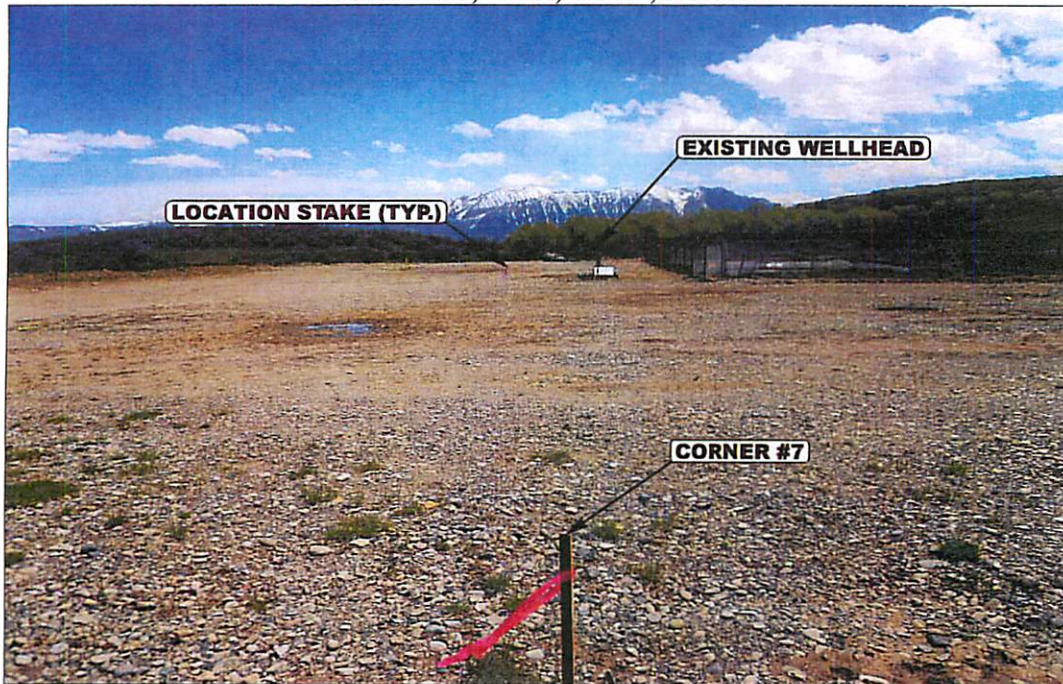


PHOTO: VIEW FROM CORNER #7 TO LOCATION STAKES

CAMERA ANGLE: EASTERLY



PHOTO: VIEW FROM BEGINNING OF EXISTING ACCESS

CAMERA ANGLE: EASTERLY



UELS Uintah Engineering & Land Surveying
85 South 200 East Vernal, Utah 84078
(435) 789-1017 * FAX (435) 789-1813

LOCATION PHOTOS

06 06 13
MONTH DAY YEAR

PHOTO
P1

TAKEN BY: B.B. DRAWN BY: J.L.H. REVISED: 00-00-00

GUNNISON ENERGY CORPORATION
JACOBS FEDERAL 1290 #6-32 H1 & 1290 #6-32 H2
ON EXISTING 1290 #6-32 PAD
LOCATED IN GUNNISON COUNTY, COLORADO
SECTION 6, T12S, R90W, 6th P.M.

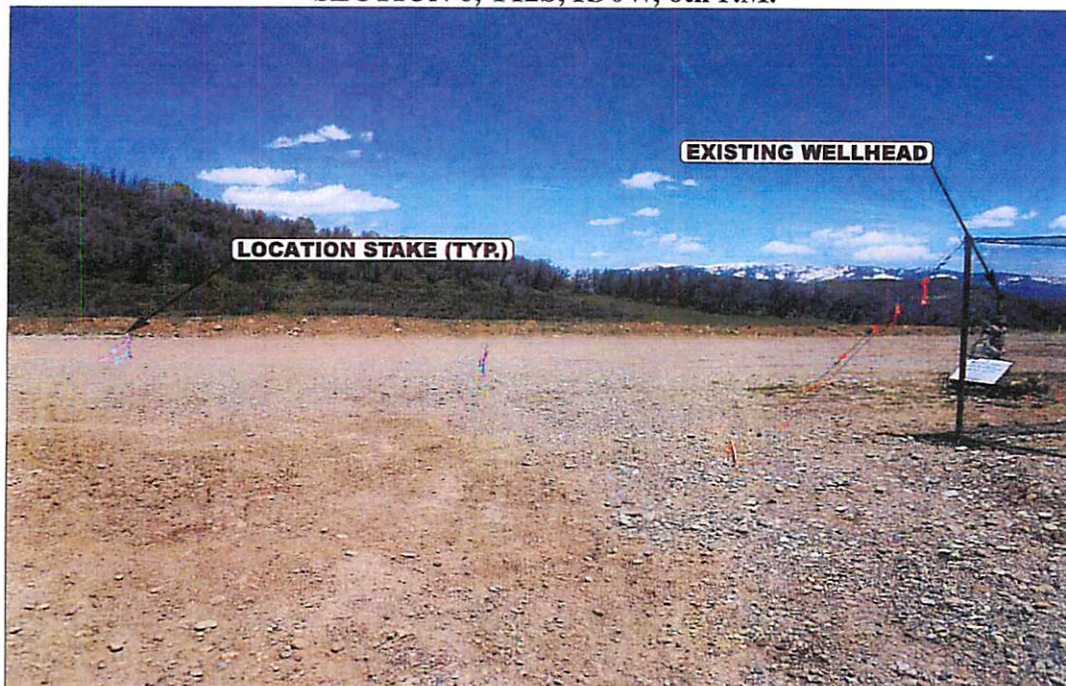


PHOTO: VIEW OF LOCATION STAKES

CAMERA ANGLE: NORTHERLY



PHOTO: VIEW OF LOCATION STAKES

CAMERA ANGLE: EASTERLY



- Since 1964 -

UELS Uintah Engineering & Land Surveying
85 South 200 East Vernal, Utah 84078
(435) 789-1017 * FAX (435) 789-1813

LOCATION PHOTOS

06 06 13
MONTH DAY YEAR

PHOTO
P2

TAKEN BY: B.B. DRAWN BY: J.L.H. REVISED: 00-00-00

GUNNISON ENERGY CORPORATION
JACOBS FEDERAL 1290 #6-32 H1 & 1290 #6-32 H2
ON EXISTING 1290 #6-32 PAD
LOCATED IN GUNNISON COUNTY, COLORADO
SECTION 6, T12S, R90W, 6th P.M.



PHOTO: VIEW OF LOCATION STAKES

CAMERA ANGLE: SOUTHERLY



PHOTO: VIEW OF LOCATION STAKES

CAMERA ANGLE: WESTERLY



UELS Uintah Engineering & Land Surveying
85 South 200 East Vernal, Utah 84078
(435) 789-1017 * FAX (435) 789-1813

LOCATION PHOTOS

06 **06** **13**
MONTH DAY YEAR

TAKEN BY: B.B.

DRAWN BY: J.L.H.

REVISED: 00-00-00

PHOTO
P3