

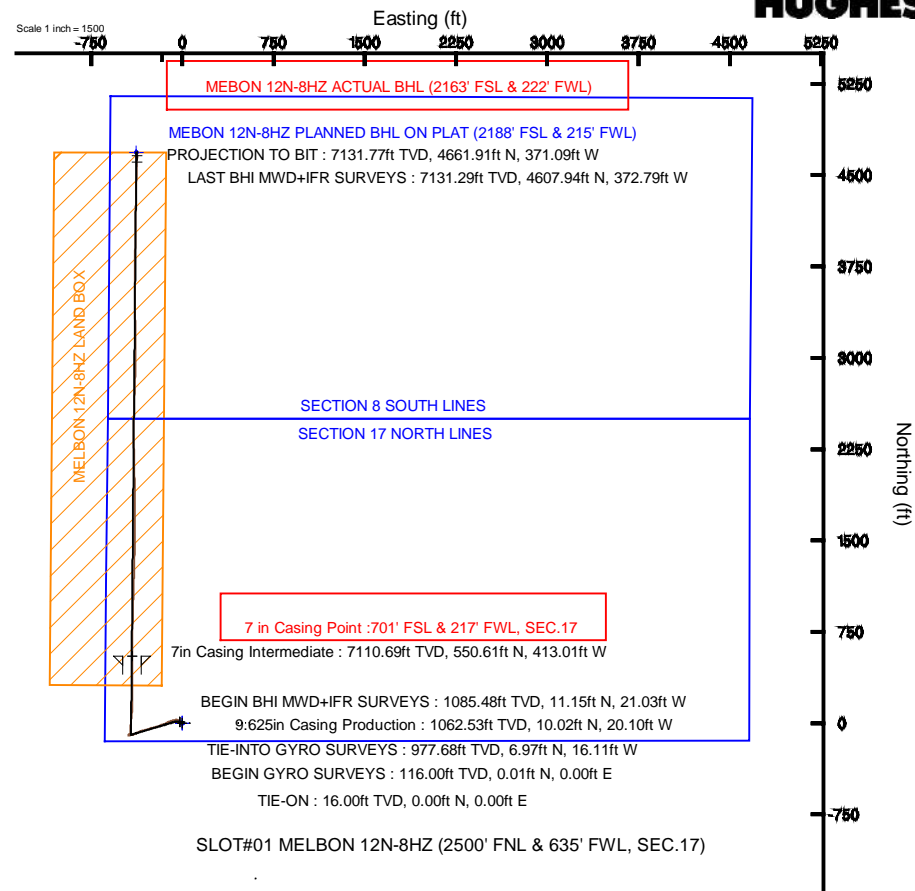
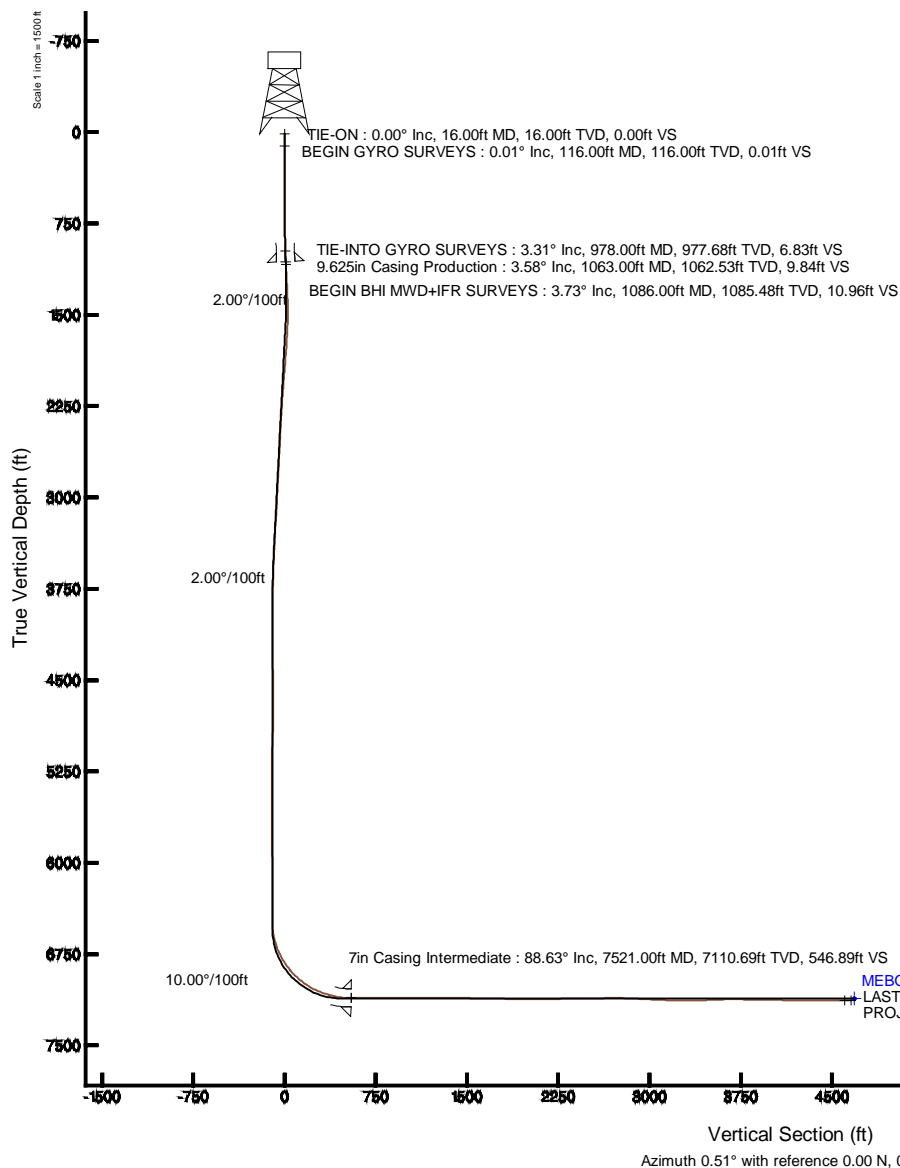
KERR-MCGEE OIL & GAS ONSHORE LP

Location: COLORADO Slot: SLOT#01 MELBON 12N-8HZ (2500' FNL & 635' FWL, SEC.17)
 Field: WELD COUNTY (KERR MCGEE) Well: MELBON 12N-8HZ
 Facility: SEC.17-T2N-R6SW Wellbore: MELBON 12N-8HZ PWB



Plot reference wellpath is MELBON 12N-8HZ (REV-B.0) PWP

True vertical depths are referenced to XTREME 24 (RKB)	Grid System: NAD83 / Lambert Colorado SP, Northern Zone (501), US feet
Measured depths are referenced to XTREME 24 (RKB)	North Reference: True north
XTREME 24 (RKB) to Mean Sea Level: 4970 feet	Scale: True distance
Mean Sea Level to Mud line (At Slot: SLOT#01 MELBON 12N-8HZ (2500' FNL & 635' FWL, SEC.17)): 0 feet	Depths are in feet
Coordinates are in feet referenced to Slot	Created by: precain on 9/9/2013





Actual Wellpath Report

MELBON 12N-8HZ AWP

Page 1 of 7



REFERENCE WELLPATH IDENTIFICATION

Operator	KERR-MCGEE OIL & GAS ONSHORE LP	Slot	SLOT#01 MELBON 12N-8HZ (2500' FNL & 635' FWL, SEC.17)
Area	COLORADO	Well	MELBON 12N-8HZ
Field	WELD COUNTY (KERR MCGEE)	Wellbore	MELBON 12N-8HZ AWB
Facility	SEC.17-T2N-R65W		

REPORT SETUP INFORMATION

Projection System	NAD83 / Lambert Colorado SP, Northern Zone (501), US feet	Software System	WellArchitect® 4.0.0
North Reference	True	User	Precain
Scale	0.999959	Report Generated	6/6/2013 at 10:02:53 AM
Convergence at slot	n/a	Database/Source file	WellArchitectDB/MELBON_12N-8HZ_AWB.xml

WELLPATH LOCATION

	Local coordinates		Grid coordinates		Geographic coordinates	
	North[ft]	East[ft]	Easting[US ft]	Northing[US ft]	Latitude	Longitude
Slot Location	-0.60	-370.00	3225039.60	1294537.98	40°08'20.749"N	104°41'42.270"W
Facility Reference Pt			3225409.56	1294541.95	40°08'20.755"N	104°41'37.506"W
Field Reference Pt			3197771.84	1268891.29	40°04'09.600"N	104°47'36.000"W

WELLPATH DATUM

Calculation method	Minimum curvature	XTREME 24 (RKB) to Facility Vertical Datum	4970.00ft
Horizontal Reference Pt	Slot	XTREME 24 (RKB) to Mean Sea Level	4970.00ft
Vertical Reference Pt	XTREME 24 (RKB)	XTREME 24 (RKB) to Mud Line at Slot (SLOT#01 MELBON 12N-8HZ (2500' FNL & 635' FWL, SEC.17))	4970.00ft
MD Reference Pt	XTREME 24 (RKB)	Section Origin	N 0.00, E 0.00 ft
Field Vertical Reference	Mean Sea Level	Section Azimuth	0.51°



Actual Wellpath Report

MELBON 12N-8HZ AWP

Page 2 of 7



REFERENCE WELLPATH IDENTIFICATION

Operator	KERR-MCGEE OIL & GAS ONSHORE LP	Slot	SLOT#01 MELBON 12N-8HZ (2500' FNL & 635' FWL, SEC.17)
Area	COLORADO	Well	MELBON 12N-8HZ
Field	WELD COUNTY (KERR MCGEE)	Wellbore	MELBON 12N-8HZ AWP
Facility	SEC.17-T2N-R65W		

WELLPATH DATA (149 stations) † = interpolated/extrapolated station

MD [ft]	Inclination [°]	Azimuth [°]	TVD [ft]	Vert Sect [ft]	North [ft]	East [ft]	Latitude	Longitude	DLS [°/100ft]	Comments
0.00†	0.000	6.960	0.00	0.00	0.00	0.00	40°08'20.749"N	104°41'42.270"W	0.00	
16.00	0.000	6.960	16.00	0.00	0.00	0.00	40°08'20.749"N	104°41'42.270"W	0.00	TIE-ON
116.00	0.010	6.960	116.00	0.01	0.01	0.00	40°08'20.749"N	104°41'42.270"W	0.01	BEGIN GYRO SURVEYS
216.00	0.110	226.620	216.00	-0.05	-0.05	-0.07	40°08'20.749"N	104°41'42.271"W	0.12	
316.00	0.200	254.090	316.00	-0.17	-0.16	-0.31	40°08'20.747"N	104°41'42.274"W	0.11	
416.00	0.500	265.480	416.00	-0.25	-0.24	-0.91	40°08'20.747"N	104°41'42.282"W	0.31	
516.00	0.790	285.770	515.99	-0.11	-0.09	-2.01	40°08'20.748"N	104°41'42.296"W	0.36	
616.00	1.330	280.150	615.97	0.27	0.30	-3.81	40°08'20.752"N	104°41'42.319"W	0.55	
716.00	1.760	297.620	715.94	1.16	1.22	-6.32	40°08'20.761"N	104°41'42.351"W	0.63	
816.00	2.150	297.850	815.88	2.72	2.80	-9.33	40°08'20.777"N	104°41'42.390"W	0.39	
916.00	3.050	305.510	915.78	5.11	5.23	-13.16	40°08'20.801"N	104°41'42.439"W	0.96	
978.00	3.310	296.170	977.68	6.83	6.97	-16.11	40°08'20.818"N	104°41'42.477"W	0.93	TIE-INTO GYRO SURVEYS
1086.00	3.730	322.790	1085.48	10.96	11.15	-21.03	40°08'20.859"N	104°41'42.541"W	1.55	BEGIN BHI MWD+IFR SURVEYS
1180.00	4.540	313.570	1179.24	15.92	16.15	-25.58	40°08'20.909"N	104°41'42.599"W	1.11	
1272.00	5.050	304.870	1270.92	20.69	20.97	-31.54	40°08'20.956"N	104°41'42.676"W	0.96	
1363.00	5.710	289.610	1361.52	24.43	24.78	-39.09	40°08'20.994"N	104°41'42.773"W	1.72	
1455.00	6.480	275.270	1453.01	26.36	26.79	-48.57	40°08'21.014"N	104°41'42.895"W	1.85	
1546.00	7.650	262.400	1543.32	25.93	26.46	-59.69	40°08'21.011"N	104°41'43.039"W	2.16	
1638.00	8.330	249.230	1634.43	22.65	23.29	-71.99	40°08'20.979"N	104°41'43.197"W	2.12	
1729.00	9.860	248.690	1724.29	17.36	18.12	-85.41	40°08'20.928"N	104°41'43.370"W	1.68	
1821.00	11.060	249.530	1814.76	11.27	12.17	-101.02	40°08'20.869"N	104°41'43.571"W	1.31	
1912.00	11.510	245.290	1904.00	4.27	5.32	-117.44	40°08'20.802"N	104°41'43.782"W	1.04	
1998.00	11.710	246.970	1988.24	-2.87	-1.68	-133.27	40°08'20.732"N	104°41'43.986"W	0.46	
2083.00	12.360	250.180	2071.37	-9.48	-8.14	-149.77	40°08'20.669"N	104°41'44.198"W	1.10	
2169.00	11.520	248.530	2155.51	-15.89	-14.40	-166.42	40°08'20.607"N	104°41'44.413"W	1.05	
2254.00	10.740	247.100	2238.91	-22.21	-20.59	-181.61	40°08'20.546"N	104°41'44.608"W	0.97	
2339.00	10.750	251.880	2322.42	-27.89	-26.14	-196.44	40°08'20.491"N	104°41'44.799"W	1.05	
2424.00	10.640	255.850	2405.95	-32.41	-30.52	-211.59	40°08'20.447"N	104°41'44.994"W	0.88	
2510.00	11.140	255.990	2490.40	-36.51	-34.47	-227.35	40°08'20.408"N	104°41'45.197"W	0.58	
2595.00	9.980	256.750	2573.96	-40.32	-38.15	-242.48	40°08'20.372"N	104°41'45.392"W	1.37	
2681.00	9.360	254.010	2658.73	-44.08	-41.78	-256.46	40°08'20.336"N	104°41'45.572"W	0.90	
2766.00	9.260	249.660	2742.62	-48.48	-46.06	-269.52	40°08'20.294"N	104°41'45.740"W	0.84	
2852.00	10.090	254.500	2827.39	-53.02	-50.48	-283.26	40°08'20.250"N	104°41'45.917"W	1.35	
2937.00	10.280	255.440	2911.05	-57.04	-54.38	-297.78	40°08'20.212"N	104°41'46.104"W	0.30	
3022.00	10.350	256.170	2994.68	-60.91	-58.11	-312.53	40°08'20.175"N	104°41'46.294"W	0.17	
3108.00	10.250	251.240	3079.30	-65.35	-62.42	-327.28	40°08'20.132"N	104°41'46.484"W	1.03	
3193.00	10.140	248.730	3162.95	-70.62	-67.56	-341.42	40°08'20.081"N	104°41'46.666"W	0.54	
3279.00	9.230	248.390	3247.73	-76.03	-72.85	-354.88	40°08'20.029"N	104°41'46.839"W	1.06	
3364.00	7.840	248.810	3331.78	-80.74	-77.46	-366.63	40°08'19.984"N	104°41'46.991"W	1.64	
3449.00	6.940	246.880	3416.08	-84.94	-81.57	-376.75	40°08'19.943"N	104°41'47.121"W	1.10	
3535.00	5.880	244.500	3501.54	-88.95	-85.51	-385.51	40°08'19.904"N	104°41'47.234"W	1.27	
3620.00	4.680	246.190	3586.18	-92.29	-88.78	-392.61	40°08'19.872"N	104°41'47.325"W	1.42	
3705.00	3.770	247.590	3670.95	-94.81	-91.25	-398.37	40°08'19.847"N	104°41'47.399"W	1.08	
3791.00	3.070	252.070	3756.79	-96.64	-93.03	-403.17	40°08'19.830"N	104°41'47.461"W	0.87	
3876.00	2.440	253.890	3841.69	-97.88	-94.24	-407.08	40°08'19.818"N	104°41'47.511"W	0.75	



Actual Wellpath Report

MELBON 12N-8HZ AWP

Page 3 of 7



REFERENCE WELLPATH IDENTIFICATION

Operator	KERR-MCGEE OIL & GAS ONSHORE LP	Slot	SLOT#01 MELBON 12N-8HZ (2500' FNL & 635' FWL, SEC.17)
Area	COLORADO	Well	MELBON 12N-8HZ
Field	WELD COUNTY (KERR MCGEE)	Wellbore	MELBON 12N-8HZ AWB
Facility	SEC.17-T2N-R65W		

WELLPATH DATA (149 stations)

MD [ft]	Inclination [°]	Azimuth [°]	TVD [ft]	Vert Sect [ft]	North [ft]	East [ft]	Latitude	Longitude	DLS [°/100ft]	Comments
3961.00	2.050	268.530	3926.63	-98.45	-94.78	-410.33	40°08'19.812"N	104°41'47.553"W	0.81	
4046.00	1.350	269.630	4011.59	-98.51	-94.82	-412.86	40°08'19.812"N	104°41'47.586"W	0.82	
4132.00	1.650	275.390	4097.56	-98.43	-94.71	-415.10	40°08'19.813"N	104°41'47.615"W	0.39	
4217.00	1.560	287.380	4182.53	-97.99	-94.25	-417.42	40°08'19.818"N	104°41'47.645"W	0.41	
4302.00	1.160	275.790	4267.50	-97.57	-93.82	-419.38	40°08'19.822"N	104°41'47.670"W	0.57	
4387.00	1.180	299.550	4352.49	-97.07	-93.30	-421.00	40°08'19.827"N	104°41'47.691"W	0.57	
4473.00	1.220	328.060	4438.47	-95.86	-92.09	-422.26	40°08'19.839"N	104°41'47.707"W	0.69	
4558.00	1.070	335.290	4523.45	-94.38	-90.60	-423.07	40°08'19.854"N	104°41'47.717"W	0.24	
4643.00	1.700	276.250	4608.43	-93.54	-89.74	-424.65	40°08'19.862"N	104°41'47.738"W	1.73	
4729.00	2.080	273.740	4694.38	-93.32	-89.50	-427.48	40°08'19.865"N	104°41'47.774"W	0.45	
4814.00	2.540	263.810	4779.31	-93.46	-89.60	-430.89	40°08'19.864"N	104°41'47.818"W	0.72	
4899.00	2.250	242.420	4864.24	-94.46	-90.58	-434.24	40°08'19.854"N	104°41'47.861"W	1.10	
4984.00	3.300	223.680	4949.14	-97.03	-93.12	-437.41	40°08'19.829"N	104°41'47.902"W	1.62	
5069.00	2.680	205.930	5034.03	-100.61	-96.68	-439.97	40°08'19.794"N	104°41'47.935"W	1.30	
5155.00	1.550	177.630	5119.97	-103.59	-99.65	-440.80	40°08'19.764"N	104°41'47.946"W	1.75	
5240.00	1.240	89.340	5204.95	-104.72	-100.78	-439.83	40°08'19.753"N	104°41'47.933"W	2.30	
5325.00	1.510	70.020	5289.93	-104.31	-100.39	-437.86	40°08'19.757"N	104°41'47.908"W	0.63	
5410.00	1.560	74.740	5374.90	-103.60	-99.70	-435.69	40°08'19.764"N	104°41'47.880"W	0.16	
5496.00	1.390	79.400	5460.87	-103.08	-99.20	-433.54	40°08'19.769"N	104°41'47.852"W	0.24	
5581.00	1.260	79.360	5545.85	-102.70	-98.84	-431.60	40°08'19.772"N	104°41'47.827"W	0.15	
5666.00	0.970	78.090	5630.83	-102.37	-98.52	-429.98	40°08'19.775"N	104°41'47.806"W	0.34	
5751.00	0.530	83.640	5715.82	-102.16	-98.33	-428.89	40°08'19.777"N	104°41'47.792"W	0.52	
5837.00	0.060	231.540	5801.82	-102.15	-98.31	-428.53	40°08'19.777"N	104°41'47.788"W	0.68	
5922.00	0.310	323.040	5886.82	-101.99	-98.16	-428.70	40°08'19.779"N	104°41'47.790"W	0.37	
6007.00	0.760	327.760	5971.82	-101.33	-97.50	-429.14	40°08'19.785"N	104°41'47.795"W	0.53	
6093.00	0.310	341.980	6057.81	-100.63	-96.79	-429.52	40°08'19.792"N	104°41'47.800"W	0.54	
6178.00	0.490	320.770	6142.81	-100.14	-96.29	-429.82	40°08'19.797"N	104°41'47.804"W	0.27	
6263.00	0.410	6.540	6227.81	-99.55	-95.71	-430.01	40°08'19.803"N	104°41'47.807"W	0.42	
6349.00	0.410	26.680	6313.81	-98.97	-95.13	-429.84	40°08'19.809"N	104°41'47.804"W	0.17	
6434.00	0.340	323.520	6398.81	-98.50	-94.65	-429.85	40°08'19.814"N	104°41'47.805"W	0.47	
6496.00	0.150	27.090	6460.81	-98.28	-94.43	-429.92	40°08'19.816"N	104°41'47.806"W	0.49	
6526.00	0.060	79.040	6490.81	-98.24	-94.40	-429.89	40°08'19.816"N	104°41'47.805"W	0.41	
6568.00	2.180	1.150	6532.80	-97.44	-93.59	-429.85	40°08'19.824"N	104°41'47.805"W	5.16	
6611.00	7.340	0.200	6575.63	-93.87	-90.03	-429.83	40°08'19.859"N	104°41'47.804"W	12.00	
6653.00	13.410	3.080	6616.93	-86.32	-82.47	-429.56	40°08'19.934"N	104°41'47.801"W	14.50	
6696.00	17.950	5.050	6658.32	-74.72	-70.89	-428.70	40°08'20.048"N	104°41'47.790"W	10.63	
6739.00	20.750	4.490	6698.88	-60.52	-56.69	-427.52	40°08'20.189"N	104°41'47.775"W	6.53	
6781.00	24.330	2.820	6737.67	-44.44	-40.63	-426.52	40°08'20.347"N	104°41'47.762"W	8.66	
6824.00	28.190	4.740	6776.22	-25.46	-21.65	-425.24	40°08'20.535"N	104°41'47.745"W	9.19	
6866.00	31.730	5.120	6812.61	-4.55	-0.76	-423.43	40°08'20.741"N	104°41'47.722"W	8.44	
6909.00	35.910	6.720	6848.32	19.27	23.04	-420.95	40°08'20.977"N	104°41'47.690"W	9.94	
6952.00	40.290	6.500	6882.15	45.65	49.39	-417.90	40°08'21.237"N	104°41'47.651"W	10.19	
6994.00	44.050	6.700	6913.28	73.68	77.39	-414.66	40°08'21.514"N	104°41'47.609"W	8.96	
7037.00	47.930	3.830	6943.15	104.49	108.18	-411.84	40°08'21.818"N	104°41'47.573"W	10.22	
7079.00	51.950	2.040	6970.18	136.60	140.28	-410.21	40°08'22.135"N	104°41'47.552"W	10.11	

REFERENCE WELLPATH IDENTIFICATION

Operator	KERR-MCGEE OIL & GAS ONSHORE LP	Slot	SLOT#01 MELBON 12N-8HZ (2500' FNL & 635' FWL, SEC.17)
Area	COLORADO	Well	MELBON 12N-8HZ
Field	WELD COUNTY (KERR MCGEE)	Wellbore	MELBON 12N-8HZ AWP
Facility	SEC.17-T2N-R65W		

WELLPATH DATA (149 stations) † = interpolated/extrapolated station

MD [ft]	Inclination [°]	Azimuth [°]	TVD [ft]	Vert Sect [ft]	North [ft]	East [ft]	Latitude	Longitude	DLS [°/100ft]	Comments
7122.00	55.900	0.280	6995.49	171.34	175.01	-409.52	40°08'22.478"N	104°41'47.543"W	9.76	
7165.00	59.130	0.140	7018.58	207.61	211.28	-409.39	40°08'22.837"N	104°41'47.541"W	7.52	
7207.00	63.030	359.020	7038.89	244.36	248.03	-409.67	40°08'23.200"N	104°41'47.545"W	9.57	
7250.00	66.430	357.810	7057.24	283.21	286.90	-410.75	40°08'23.584"N	104°41'47.559"W	8.31	
7293.00	70.460	358.070	7073.04	323.15	326.86	-412.19	40°08'23.979"N	104°41'47.577"W	9.39	
7335.00	74.180	359.310	7085.79	363.14	366.85	-413.10	40°08'24.374"N	104°41'47.589"W	9.29	
7378.00	78.270	359.830	7096.03	404.89	408.61	-413.41	40°08'24.787"N	104°41'47.593"W	9.58	
7421.00	81.540	359.590	7103.57	447.21	450.94	-413.62	40°08'25.205"N	104°41'47.596"W	7.62	
7474.00	86.950	0.590	7108.88	499.93	503.65	-413.54	40°08'25.726"N	104°41'47.595"W	10.38	
7521.00†	88.627	0.692	7110.69	546.89	550.61	-413.01	40°08'26.190"N	104°41'47.588"W	3.57	7 in Casing Point
7562.00	90.090	0.780	7111.15	587.88	591.60	-412.48	40°08'26.595"N	104°41'47.581"W	3.57	
7647.00	89.810	0.880	7111.23	672.88	676.59	-411.25	40°08'27.435"N	104°41'47.565"W	0.35	
7733.00	90.400	0.950	7111.07	758.88	762.58	-409.88	40°08'28.285"N	104°41'47.548"W	0.69	
7818.00	90.900	1.550	7110.10	843.87	847.55	-408.03	40°08'29.125"N	104°41'47.524"W	0.92	
7904.00	90.000	1.370	7109.43	929.85	933.52	-405.84	40°08'29.974"N	104°41'47.496"W	1.07	
7990.00	89.750	1.700	7109.62	1015.84	1019.49	-403.53	40°08'30.824"N	104°41'47.466"W	0.48	
8075.00	90.370	1.760	7109.53	1100.82	1104.45	-400.97	40°08'31.663"N	104°41'47.433"W	0.73	
8160.00	89.680	1.960	7109.49	1185.79	1189.41	-398.21	40°08'32.503"N	104°41'47.397"W	0.85	
8246.00	90.400	1.710	7109.43	1271.77	1275.36	-395.45	40°08'33.352"N	104°41'47.362"W	0.89	
8331.00	89.410	1.030	7109.57	1356.76	1360.34	-393.42	40°08'34.192"N	104°41'47.336"W	1.41	
8417.00	89.010	0.010	7110.76	1442.75	1446.32	-392.64	40°08'35.042"N	104°41'47.326"W	1.27	
8502.00	88.860	359.970	7112.34	1527.73	1531.31	-392.65	40°08'35.881"N	104°41'47.326"W	0.18	
8587.00	88.670	0.090	7114.17	1612.71	1616.29	-392.61	40°08'36.721"N	104°41'47.326"W	0.26	
8673.00	88.850	0.510	7116.03	1698.69	1702.27	-392.16	40°08'37.571"N	104°41'47.320"W	0.53	
8758.00	89.500	359.960	7117.25	1783.68	1787.26	-391.81	40°08'38.411"N	104°41'47.315"W	1.00	
8843.00	88.970	0.400	7118.39	1868.67	1872.25	-391.54	40°08'39.251"N	104°41'47.312"W	0.81	
8928.00	89.130	358.980	7119.80	1953.64	1957.23	-392.00	40°08'40.091"N	104°41'47.318"W	1.68	
9013.00	89.380	358.300	7120.90	2038.59	2042.20	-394.02	40°08'40.930"N	104°41'47.344"W	0.85	
9099.00	91.080	359.190	7120.56	2124.55	2128.18	-395.91	40°08'41.780"N	104°41'47.368"W	2.23	
9184.00	91.240	358.770	7118.84	2209.50	2213.15	-397.42	40°08'42.619"N	104°41'47.388"W	0.53	
9269.00	91.500	358.890	7116.80	2294.44	2298.10	-399.15	40°08'43.459"N	104°41'47.410"W	0.34	
9355.00	91.110	359.680	7114.85	2380.39	2384.07	-400.23	40°08'44.309"N	104°41'47.424"W	1.02	
9440.00	90.000	1.430	7114.02	2465.39	2469.06	-399.40	40°08'45.148"N	104°41'47.413"W	2.44	
9525.00	90.740	1.370	7113.47	2550.37	2554.03	-397.33	40°08'45.988"N	104°41'47.386"W	0.87	
9611.00	91.070	1.870	7112.12	2636.35	2639.99	-394.89	40°08'46.838"N	104°41'47.355"W	0.70	
9696.00	90.000	2.280	7111.32	2721.31	2724.93	-391.82	40°08'47.677"N	104°41'47.316"W	1.35	
9781.00	88.000	2.310	7112.80	2806.25	2809.84	-388.41	40°08'48.516"N	104°41'47.272"W	2.35	
9866.00	87.010	0.840	7116.51	2891.15	2894.72	-386.08	40°08'49.355"N	104°41'47.242"W	2.08	
9951.00	86.910	0.860	7121.01	2976.03	2979.60	-384.82	40°08'50.194"N	104°41'47.225"W	0.12	
10037.00	86.990	359.640	7125.59	3061.91	3065.47	-384.45	40°08'51.042"N	104°41'47.221"W	1.42	
10122.00	88.760	358.800	7128.74	3146.82	3150.40	-385.60	40°08'51.881"N	104°41'47.236"W	2.30	
10207.00	88.690	359.520	7130.63	3231.78	3235.37	-386.85	40°08'52.721"N	104°41'47.252"W	0.85	
10292.00	90.580	358.860	7131.17	3316.75	3320.36	-388.05	40°08'53.561"N	104°41'47.267"W	2.36	
10378.00	91.360	359.960	7129.72	3402.72	3406.34	-388.94	40°08'54.411"N	104°41'47.279"W	1.57	
10463.00	91.960	359.870	7127.26	3487.68	3491.30	-389.06	40°08'55.250"N	104°41'47.280"W	0.71	



Actual Wellpath Report

MELBON 12N-8HZ AWP

Page 5 of 7



REFERENCE WELLPATH IDENTIFICATION

Operator	KERR-MCGEE OIL & GAS ONSHORE LP	Slot	SLOT#01 MELBON 12N-8HZ (2500' FNL & 635' FWL, SEC.17)
Area	COLORADO	Well	MELBON 12N-8HZ
Field	WELD COUNTY (KERR MCGEE)	Wellbore	MELBON 12N-8HZ AWP
Facility	SEC.17-T2N-R65W		

WELLPATH DATA (149 stations)

MD [ft]	Inclination [°]	Azimuth [°]	TVD [ft]	Vert Sect [ft]	North [ft]	East [ft]	Latitude	Longitude	DLS [°/100ft]	Comments
10548.00	92.400	0.010	7124.02	3572.61	3576.24	-389.15	40°08'56.090"N	104°41'47.281"W	0.54	
10634.00	90.740	0.250	7121.67	3658.57	3662.20	-388.96	40°08'56.939"N	104°41'47.279"W	1.95	
10719.00	88.610	0.320	7122.15	3743.57	3747.20	-388.53	40°08'57.779"N	104°41'47.273"W	2.51	
10804.00	88.580	0.230	7124.23	3828.54	3832.17	-388.12	40°08'58.619"N	104°41'47.268"W	0.11	
10889.00	89.290	0.350	7125.81	3913.53	3917.15	-387.69	40°08'59.459"N	104°41'47.263"W	0.85	
10975.00	89.500	0.730	7126.72	3999.52	4003.14	-386.88	40°09'00.308"N	104°41'47.252"W	0.50	
11060.00	88.820	0.600	7127.97	4084.51	4088.13	-385.90	40°09'01.148"N	104°41'47.240"W	0.81	
11145.00	89.190	1.570	7129.44	4169.49	4173.10	-384.29	40°09'01.988"N	104°41'47.219"W	1.22	
11230.00	90.060	0.950	7130.00	4254.48	4258.08	-382.42	40°09'02.828"N	104°41'47.195"W	1.26	
11316.00	89.780	1.500	7130.12	4340.47	4344.06	-380.58	40°09'03.677"N	104°41'47.171"W	0.72	
11401.00	89.710	1.720	7130.50	4425.46	4429.02	-378.19	40°09'04.517"N	104°41'47.140"W	0.27	
11486.00	89.900	1.700	7130.79	4510.44	4513.98	-375.66	40°09'05.356"N	104°41'47.108"W	0.22	
11580.00	89.490	1.800	7131.29	4604.42	4607.94	-372.79	40°09'06.285"N	104°41'47.071"W	0.45	LAST BHI MWD+IFR SURVEYS
11634.00	89.490	1.800	7131.77	4658.40	4661.91	-371.09	40°09'06.818"N	104°41'47.049"W	0.00	PROJECTION TO BIT

HOLE & CASING SECTIONS - Ref Wellbore: MELBON 12N-8HZ AWP Ref Wellpath: MELBON 12N-8HZ AWP

String/Diameter	Start MD [ft]	End MD [ft]	Interval [ft]	Start TVD [ft]	End TVD [ft]	Start N/S [ft]	Start E/W [ft]	End N/S [ft]	End E/W [ft]
13.5in Open Hole	16.00	1063.00	1047.00	16.00	1062.53	0.00	0.00	10.02	-20.10
9.625in Casing Production	16.00	1063.00	1047.00	16.00	1062.53	0.00	0.00	10.02	-20.10
8.75in Open Hole	1063.00	7530.00	6467.00	1062.53	7110.88	10.02	-20.10	559.61	-412.90
7in Casing Intermediate	16.00	7521.00	7505.00	16.00	7110.69	0.00	0.00	550.61	-413.01
6.125in Open Hole	7530.00	11634.00	4104.00	7110.88	7131.77	559.61	-412.90	4661.91	-371.09



Actual Wellpath Report

MELBON 12N-8HZ AWP

Page 6 of 7



REFERENCE WELLPATH IDENTIFICATION

Operator	KERR-MCGEE OIL & GAS ONSHORE LP	Slot	SLOT#01 MELBON 12N-8HZ (2500' FNL & 635' FWL, SEC.17)
Area	COLORADO	Well	MELBON 12N-8HZ
Field	WELD COUNTY (KERR MCGEE)	Wellbore	MELBON 12N-8HZ AWB
Facility	SEC.17-T2N-R65W		

TARGETS

Name	MD [ft]	TVD [ft]	North [ft]	East [ft]	Grid East [US ft]	Grid North [US ft]	Latitude	Longitude	Shape
MEBON 12N-8HZ BHL ON PLAT (2188' FSL & 215' FWL)		7116.00	4687.78	-377.92	3224619.15	1299221.94	40°09'07.074"N	104°41'47.137"W	point
FIELDS X8-12 150' RADIUS		7200.00	4688.69	73.77	3225070.80	1299226.95	40°09'07.083"N	104°41'41.320"W	circle
MELBON 12N-8HZ LAND BOX		7200.00	0.00	0.00	3225039.60	1294537.98	40°08'20.749"N	104°41'42.270"W	polygon
SECTION 17 NORTH LINES		7200.00	0.00	0.00	3225039.60	1294537.98	40°08'20.749"N	104°41'42.270"W	polygon
SECTION 8 SOUTH LINES		7200.00	0.00	0.00	3225039.60	1294537.98	40°08'20.749"N	104°41'42.270"W	polygon

WELLPATH COMPOSITION - Ref Wellbore: MELBON 12N-8HZ AWB Ref Wellpath: MELBON 12N-8HZ AWP

Start MD [ft]	End MD [ft]	Positional Uncertainty Model	Log Name/Comment	Wellbore
16.00	978.00	Generic gyro - continuous (Standard)	MS ENERGY GYRODATA SURVEYS <116-978>	MELBON 12N-8HZ AWB
978.00	7474.00	NaviTrak (MAGCORR,IFR)	BHI MWD+IFR SURVEYS 8 3/4" HOLE <1086-7474>	MELBON 12N-8HZ AWB
7474.00	11580.00	OnTrak (MAGCORR,IFR)	BHI MWD+IFR SURVEYS 6 1/8" HOLE <7562-11580>	MELBON 12N-8HZ AWB
11580.00	11634.00	Blind Drilling (std)	Projection to bit	MELBON 12N-8HZ AWB



Actual Wellpath Report

MELBON 12N-8HZ AWP

Page 7 of 7



REFERENCE WELLPATH IDENTIFICATION

Operator	KERR-MCGEE OIL & GAS ONSHORE LP	Slot	SLOT#01 MELBON 12N-8HZ (2500' FNL & 635' FWL, SEC.17)
Area	COLORADO	Well	MELBON 12N-8HZ
Field	WELD COUNTY (KERR MCGEE)	Wellbore	MELBON 12N-8HZ AWP
Facility	SEC.17-T2N-R65W		

WELLPATH COMMENTS

MD [ft]	Inclination [°]	Azimuth [°]	TVD [ft]	Comment
16.00	0.000	6.960	16.00	TIE-ON
116.00	0.010	6.960	116.00	BEGIN GYRO SURVEYS
978.00	3.310	296.170	977.68	TIE-INTO GYRO SURVEYS
1086.00	3.730	322.790	1085.48	BEGIN BHI MWD+IFR SURVEYS
7521.00	88.627	0.692	7110.69	7 in Casing Point
11580.00	89.490	1.800	7131.29	LAST BHI MWD+IFR SURVEYS
11634.00	89.490	1.800	7131.77	PROJECTION TO BIT