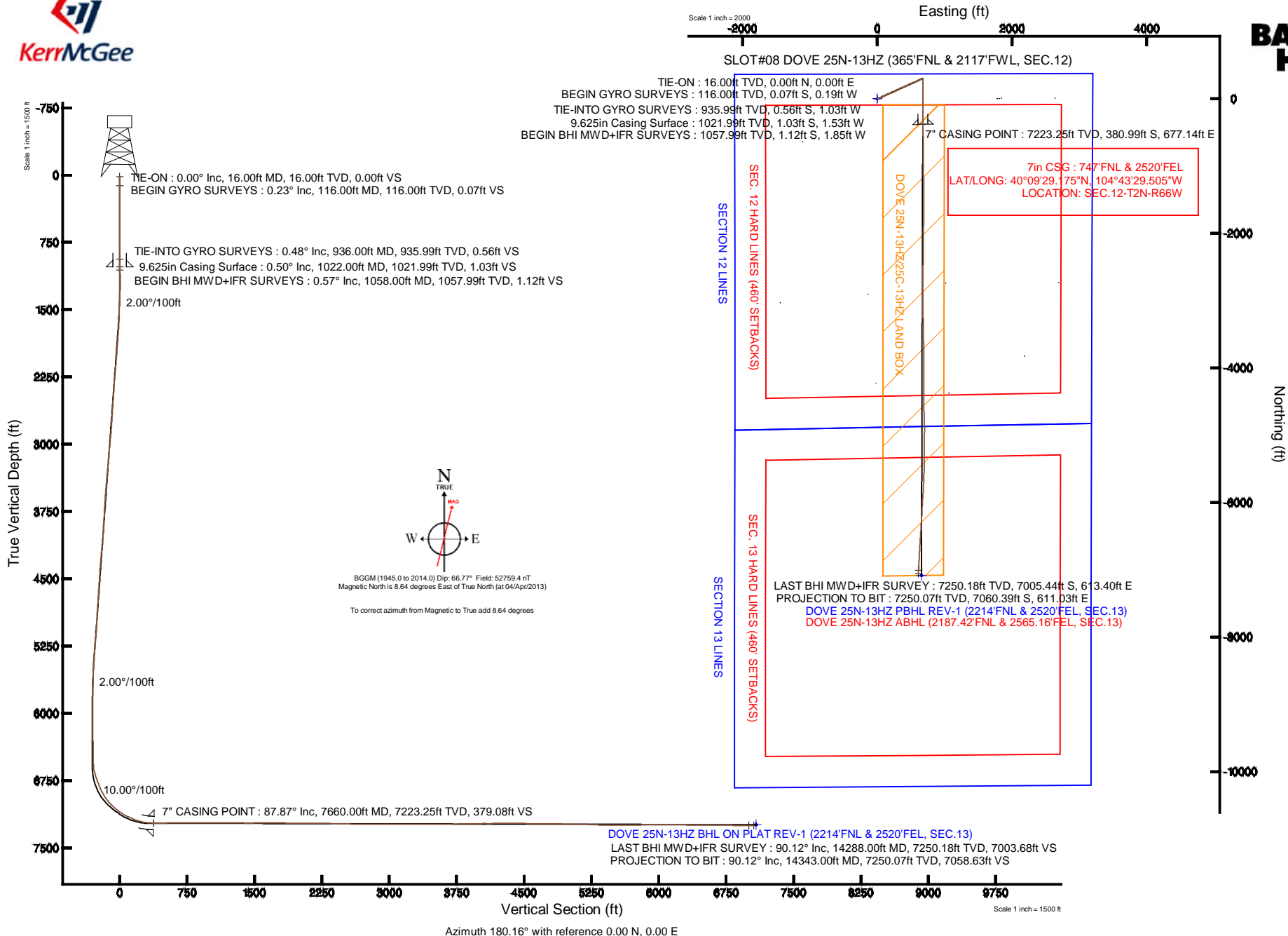


KERR-MCGEE OIL & GAS ONSHORE LP

Location: COLORADO Slot: SLOT#08 DOVE 25N-13HZ (365'FNL & 2117'FWL, SEC.12)
 Field: WELD COUNTY (KERR MCGEE) Well: DOVE 25N-13HZ
 Facility: SEC.12-T2N-R66W Wellbore: DOVE 25N-13HZ PWB

Plot reference wellpath is DOVE 25N-13HZ (REV-A.0) PWP

True vertical depths are referenced to XTREME 24 (RKB)	Grid System: NAD83 / Lambert Colorado SP, Northern Zone (501), US feet
Measured depths are referenced to XTREME 24 (RKB)	North Reference: True north
XTREME 24 (RKB) to Mean Sea Level: 4998 feet	Scale: True distance
Mean Sea Level to Mud line (At Slot: SLOT#08 DOVE 25N-13HZ (365'FNL & 2117'FWL, SEC.12)): 0 feet	Depths are in feet
Coordinates are in feet referenced to Slot	Created by: robale01 on 05/Jun/2013





Actual Wellpath Report

DOVE 25N-13HZ AWP

Page 1 of 7



REFERENCE WELLPATH IDENTIFICATION

Operator	KERR-MCGEE OIL & GAS ONSHORE LP	Slot	SLOT#08 DOVE 25N-13HZ (365'FNL & 2117'FWL, SEC.12)
Area	COLORADO	Well	DOVE 25N-13HZ
Field	WELD COUNTY (KERR MCGEE)	Wellbore	DOVE 25N-13HZ AWB
Facility	SEC.12-T2N-R66W		

REPORT SETUP INFORMATION

Projection System	NAD83 / Lambert Colorado SP, Northern Zone (501), US feet	Software System	WellArchitect® 4.0.0
North Reference	True	User	Robiale01
Scale	0.999958	Report Generated	05/Jun/2013 at 15:56
Convergence at slot	n/a	Database/Source file	WellArchitectDB/DOVE_25N-13HZ_AWB.xml

WELLPATH LOCATION

	Local coordinates		Grid coordinates		Geographic coordinates	
	North[ft]	East[ft]	Easting[US ft]	Northing[US ft]	Latitude	Longitude
Slot Location	2254.12	-537.58	3215970.96	1301762.53	40°09'32.940"N	104°43'38.226"W
Facility Reference Pt			3216528.18	1299513.29	40°09'10.665"N	104°43'31.302"W
Field Reference Pt			3197771.84	1268891.29	40°04'09.600"N	104°47'36.000"W

WELLPATH DATUM

Calculation method	Minimum curvature	XTREME 24 (RKB) to Facility Vertical Datum	4998.00ft
Horizontal Reference Pt	Slot	XTREME 24 (RKB) to Mean Sea Level	4998.00ft
Vertical Reference Pt	XTREME 24 (RKB)	XTREME 24 (RKB) to Mud Line at Slot (SLOT#08 DOVE 25N-13HZ (365'FNL & 2117'FWL, SEC.12))	4998.00ft
MD Reference Pt	XTREME 24 (RKB)	Section Origin	N 0.00, E 0.00 ft
Field Vertical Reference	Mean Sea Level	Section Azimuth	175.05°



Actual Wellpath Report

DOVE 25N-13HZ AWP

Page 2 of 7



REFERENCE WELLPATH IDENTIFICATION

Operator	KERR-MCGEE OIL & GAS ONSHORE LP	Slot	SLOT#08 DOVE 25N-13HZ (365'FNL & 2117'FWL, SEC.12)
Area	COLORADO	Well	DOVE 25N-13HZ
Field	WELD COUNTY (KERR MCGEE)	Wellbore	DOVE 25N-13HZ AWB
Facility	SEC.12-T2N-R66W		

WELLPATH DATA (178 stations) † = interpolated/extrapolated station

MD [ft]	Inclination [°]	Azimuth [°]	TVD [ft]	Vert Sect [ft]	North [ft]	East [ft]	Latitude	Longitude	DLS [°/100ft]	Comments
0.00†	0.000	251.010	0.00	0.00	0.00	0.00	40°09'32.940"N	104°43'38.226"W	0.00	
16.00	0.000	251.010	16.00	0.00	0.00	0.00	40°09'32.940"N	104°43'38.226"W	0.00	TIE-ON
116.00	0.230	251.010	116.00	0.05	-0.07	-0.19	40°09'32.939"N	104°43'38.228"W	0.23	BEGIN GYRO SURVEYS
216.00	0.170	171.260	216.00	0.25	-0.28	-0.36	40°09'32.937"N	104°43'38.231"W	0.26	
316.00	0.340	8.250	316.00	0.10	-0.13	-0.29	40°09'32.939"N	104°43'38.230"W	0.51	
416.00	0.380	249.590	416.00	-0.10	0.05	-0.56	40°09'32.940"N	104°43'38.233"W	0.62	
516.00	0.310	52.490	516.00	-0.15	0.10	-0.66	40°09'32.941"N	104°43'38.234"W	0.68	
616.00	0.340	197.080	616.00	-0.02	-0.02	-0.53	40°09'32.940"N	104°43'38.233"W	0.62	
716.00	0.350	324.320	716.00	-0.01	-0.06	-0.79	40°09'32.939"N	104°43'38.236"W	0.62	
816.00	0.240	146.690	816.00	-0.09	0.02	-0.86	40°09'32.940"N	104°43'38.237"W	0.59	
916.00	0.390	217.850	915.99	0.34	-0.43	-0.95	40°09'32.936"N	104°43'38.238"W	0.39	
936.00	0.480	205.640	935.99	0.47	-0.56	-1.03	40°09'32.934"N	104°43'38.239"W	0.64	TIE-INTO GYRO SURVEYS
1058.00	0.570	260.440	1057.99	0.96	-1.12	-1.85	40°09'32.929"N	104°43'38.250"W	0.40	BEGIN BHI MWD+IFR SURVEYS
1183.00	0.730	66.460	1182.99	0.75	-0.90	-1.73	40°09'32.931"N	104°43'38.248"W	1.03	
1277.00	2.740	64.680	1276.94	-0.22	0.30	0.85	40°09'32.943"N	104°43'38.215"W	2.14	
1371.00	4.560	70.130	1370.74	-1.97	2.53	6.39	40°09'32.965"N	104°43'38.144"W	1.97	
1465.00	5.110	86.310	1464.41	-2.84	4.07	14.09	40°09'32.980"N	104°43'38.045"W	1.56	
1559.00	6.920	76.550	1557.89	-3.58	5.65	23.77	40°09'32.996"N	104°43'37.920"W	2.20	
1653.00	8.040	71.730	1651.09	-5.93	9.03	35.52	40°09'33.029"N	104°43'37.768"W	1.36	
1747.00	10.080	65.420	1743.92	-10.21	14.51	49.25	40°09'33.083"N	104°43'37.592"W	2.41	
1841.00	9.290	63.380	1836.58	-15.78	21.34	63.51	40°09'33.151"N	104°43'37.408"W	0.92	
1936.00	9.850	64.960	1930.26	-21.40	28.21	77.73	40°09'33.219"N	104°43'37.225"W	0.65	
2031.00	10.440	64.620	2023.77	-27.20	35.34	92.87	40°09'33.289"N	104°43'37.030"W	0.62	
2122.00	10.230	61.450	2113.29	-33.32	42.74	107.41	40°09'33.362"N	104°43'36.843"W	0.67	
2214.00	9.830	60.550	2203.89	-39.84	50.50	121.43	40°09'33.439"N	104°43'36.662"W	0.47	
2305.00	10.220	64.530	2293.50	-45.90	57.79	135.48	40°09'33.511"N	104°43'36.481"W	0.87	
2396.00	10.610	69.720	2383.00	-50.94	64.17	150.63	40°09'33.574"N	104°43'36.286"W	1.12	
2487.00	10.160	68.920	2472.51	-55.39	69.96	165.98	40°09'33.631"N	104°43'36.088"W	0.52	
2579.00	10.000	67.200	2563.09	-60.09	75.97	180.91	40°09'33.691"N	104°43'35.896"W	0.37	
2670.00	10.360	72.020	2652.66	-64.36	81.56	195.98	40°09'33.746"N	104°43'35.702"W	1.02	
2761.00	10.390	69.420	2742.17	-68.42	86.97	211.44	40°09'33.799"N	104°43'35.503"W	0.52	
2852.00	10.880	64.910	2831.61	-73.58	93.50	226.90	40°09'33.864"N	104°43'35.304"W	1.06	
2944.00	11.830	63.080	2921.81	-80.10	101.45	243.18	40°09'33.943"N	104°43'35.094"W	1.10	
3035.00	11.430	64.240	3010.94	-86.80	109.59	259.61	40°09'34.023"N	104°43'34.882"W	0.51	
3126.00	11.170	63.680	3100.18	-93.21	117.42	275.64	40°09'34.100"N	104°43'34.676"W	0.31	
3218.00	10.270	62.130	3190.57	-99.66	125.20	290.87	40°09'34.177"N	104°43'34.480"W	1.03	
3309.00	9.370	53.840	3280.24	-106.66	133.37	304.03	40°09'34.258"N	104°43'34.310"W	1.84	
3400.00	9.570	57.860	3370.00	-113.95	141.76	316.41	40°09'34.341"N	104°43'34.151"W	0.76	
3492.00	10.050	60.660	3460.66	-120.76	149.76	329.89	40°09'34.420"N	104°43'33.977"W	0.74	
3582.00	9.510	66.500	3549.35	-126.37	156.58	343.55	40°09'34.487"N	104°43'33.801"W	1.25	
3674.00	9.470	67.920	3640.09	-131.02	162.45	357.53	40°09'34.545"N	104°43'33.621"W	0.26	
3767.00	10.540	71.670	3731.68	-135.24	168.00	372.70	40°09'34.600"N	104°43'33.426"W	1.35	
3860.00	8.680	70.910	3823.37	-138.93	172.97	387.40	40°09'34.649"N	104°43'33.236"W	2.00	
3953.00	9.030	65.410	3915.26	-143.09	178.31	400.67	40°09'34.702"N	104°43'33.065"W	0.98	
4046.00	10.050	66.550	4006.97	-148.12	184.57	414.75	40°09'34.764"N	104°43'32.884"W	1.12	



Actual Wellpath Report

DOVE 25N-13HZ AWP

Page 3 of 7



REFERENCE WELLPATH IDENTIFICATION

Operator	KERR-MCGEE OIL & GAS ONSHORE LP	Slot	SLOT#08 DOVE 25N-13HZ (365'FNL & 2117'FWL, SEC.12)
Area	COLORADO	Well	DOVE 25N-13HZ
Field	WELD COUNTY (KERR MCGEE)	Wellbore	DOVE 25N-13HZ AWB
Facility	SEC.12-T2N-R66W		

WELLPATH DATA (178 stations)

MD [ft]	Inclination [°]	Azimuth [°]	TVD [ft]	Vert Sect [ft]	North [ft]	East [ft]	Latitude	Longitude	DLS [°/100ft]	Comments
4140.00	10.620	63.300	4099.45	-153.94	191.73	430.02	40°09'34.835"N	104°43'32.688"W	0.87	
4233.00	10.950	61.500	4190.81	-160.64	199.79	445.44	40°09'34.914"N	104°43'32.489"W	0.51	
4327.00	10.310	62.880	4283.19	-167.39	207.89	460.77	40°09'34.994"N	104°43'32.291"W	0.73	
4420.00	9.770	61.610	4374.77	-173.67	215.43	475.12	40°09'35.069"N	104°43'32.107"W	0.63	
4514.00	9.800	69.320	4467.41	-179.01	222.05	489.62	40°09'35.134"N	104°43'31.920"W	1.39	
4608.00	9.960	69.580	4560.01	-183.35	227.71	504.72	40°09'35.190"N	104°43'31.725"W	0.18	
4701.00	11.290	70.430	4651.42	-187.79	233.57	520.84	40°09'35.248"N	104°43'31.518"W	1.44	
4786.00	10.870	70.830	4734.83	-191.86	238.99	536.25	40°09'35.302"N	104°43'31.319"W	0.50	
4872.00	11.070	71.690	4819.26	-195.76	244.24	551.75	40°09'35.354"N	104°43'31.120"W	0.30	
4957.00	9.990	72.780	4902.83	-199.21	248.99	566.53	40°09'35.400"N	104°43'30.929"W	1.29	
5042.00	8.700	69.790	4986.70	-202.47	253.39	579.61	40°09'35.444"N	104°43'30.761"W	1.62	
5127.00	8.310	61.430	5070.77	-206.63	258.55	591.04	40°09'35.495"N	104°43'30.614"W	1.52	
5212.00	9.680	54.700	5154.72	-212.70	265.62	602.27	40°09'35.565"N	104°43'30.469"W	2.03	
5298.00	9.160	56.540	5239.56	-219.62	273.57	613.88	40°09'35.643"N	104°43'30.319"W	0.70	
5383.00	9.060	62.700	5323.49	-225.40	280.37	625.47	40°09'35.711"N	104°43'30.170"W	1.15	
5468.00	7.600	66.780	5407.59	-229.71	285.66	636.58	40°09'35.763"N	104°43'30.027"W	1.85	
5553.00	6.540	70.020	5491.95	-232.72	289.53	646.30	40°09'35.801"N	104°43'29.902"W	1.33	
5639.00	6.270	75.450	5577.41	-234.78	292.38	655.45	40°09'35.829"N	104°43'29.784"W	0.77	
5724.00	4.710	70.340	5662.02	-236.44	294.72	663.23	40°09'35.852"N	104°43'29.684"W	1.92	
5809.00	4.050	71.240	5746.77	-238.04	296.86	669.35	40°09'35.874"N	104°43'29.605"W	0.78	
5894.00	2.370	81.720	5831.63	-238.86	298.08	673.94	40°09'35.886"N	104°43'29.546"W	2.09	
5980.00	1.510	59.400	5917.58	-239.46	298.91	676.67	40°09'35.894"N	104°43'29.511"W	1.31	
6065.00	0.210	128.930	6002.57	-239.83	299.38	677.76	40°09'35.898"N	104°43'29.497"W	1.71	
6150.00	0.370	228.790	6087.57	-239.56	299.11	677.67	40°09'35.896"N	104°43'29.498"W	0.54	
6235.00	0.860	211.130	6172.57	-238.88	298.38	677.14	40°09'35.889"N	104°43'29.505"W	0.61	
6321.00	1.240	201.340	6258.55	-237.53	296.96	676.46	40°09'35.874"N	104°43'29.513"W	0.49	
6406.00	1.340	201.820	6343.53	-235.82	295.18	675.76	40°09'35.857"N	104°43'29.522"W	0.12	
6491.00	1.130	204.880	6428.51	-234.20	293.50	675.04	40°09'35.840"N	104°43'29.532"W	0.26	
6576.00	1.040	171.700	6513.50	-232.70	291.97	674.80	40°09'35.825"N	104°43'29.535"W	0.74	
6619.00	1.710	185.800	6556.48	-231.68	290.95	674.79	40°09'35.815"N	104°43'29.535"W	1.73	
6661.00	6.060	181.230	6598.38	-228.86	288.11	674.68	40°09'35.787"N	104°43'29.536"W	10.38	
6704.00	11.840	180.460	6640.84	-222.21	281.42	674.59	40°09'35.721"N	104°43'29.537"W	13.44	
6747.00	17.400	180.000	6682.43	-211.40	270.57	674.56	40°09'35.614"N	104°43'29.538"W	12.93	
6789.00	18.130	178.850	6722.43	-198.63	257.76	674.69	40°09'35.487"N	104°43'29.536"W	1.93	
6832.00	19.270	178.490	6763.15	-184.87	243.98	675.01	40°09'35.351"N	104°43'29.532"W	2.66	
6874.00	22.270	177.890	6802.42	-170.00	229.09	675.48	40°09'35.204"N	104°43'29.526"W	7.16	
6917.00	25.770	177.900	6841.69	-152.52	211.60	676.13	40°09'35.031"N	104°43'29.518"W	8.14	
6960.00	28.210	178.020	6880.00	-133.03	192.10	676.82	40°09'34.838"N	104°43'29.509"W	5.68	
7002.00	30.720	178.990	6916.57	-112.41	171.45	677.35	40°09'34.634"N	104°43'29.502"W	6.08	
7045.00	35.070	179.360	6952.67	-89.12	148.11	677.68	40°09'34.404"N	104°43'29.498"W	10.13	
7088.00	40.390	181.210	6986.66	-62.93	121.81	677.53	40°09'34.144"N	104°43'29.500"W	12.65	
7130.00	44.390	181.960	7017.68	-34.81	93.51	676.74	40°09'33.864"N	104°43'29.510"W	9.60	
7173.00	47.990	180.830	7047.44	-3.97	62.49	675.99	40°09'33.557"N	104°43'29.519"W	8.58	
7215.00	51.770	180.480	7074.50	27.98	30.38	675.63	40°09'33.240"N	104°43'29.524"W	9.02	
7258.00	55.630	180.100	7099.95	62.49	-4.26	675.46	40°09'32.898"N	104°43'29.526"W	9.00	



Actual Wellpath Report

DOVE 25N-13HZ AWP

Page 4 of 7



REFERENCE WELLPATH IDENTIFICATION

Operator	KERR-MCGEE OIL & GAS ONSHORE LP	Slot	SLOT#08 DOVE 25N-13HZ (365'FNL & 2117'FWL, SEC.12)
Area	COLORADO	Well	DOVE 25N-13HZ
Field	WELD COUNTY (KERR MCGEE)	Wellbore	DOVE 25N-13HZ AWB
Facility	SEC.12-T2N-R66W		

WELLPATH DATA (178 stations) † = interpolated/extrapolated station

MD [ft]	Inclination [°]	Azimuth [°]	TVD [ft]	Vert Sect [ft]	North [ft]	East [ft]	Latitude	Longitude	DLS [°/100ft]	Comments
7301.00	59.360	180.310	7123.06	98.60	-40.52	675.32	40°09'32.539"N	104°43'29.528"W	8.68	
7343.00	63.410	179.990	7143.17	135.31	-77.38	675.23	40°09'32.175"N	104°43'29.529"W	9.67	
7386.00	65.610	178.910	7161.67	174.01	-116.19	675.61	40°09'31.792"N	104°43'29.525"W	5.60	
7429.00	67.640	178.900	7178.73	213.39	-155.66	676.36	40°09'31.402"N	104°43'29.515"W	4.72	
7471.00	71.980	179.490	7193.22	252.70	-195.06	676.91	40°09'31.012"N	104°43'29.508"W	10.42	
7514.00	76.440	179.860	7204.92	293.93	-236.43	677.14	40°09'30.604"N	104°43'29.505"W	10.41	
7556.00	80.090	180.660	7213.46	334.88	-277.54	676.96	40°09'30.197"N	104°43'29.507"W	8.89	
7610.00	85.360	179.810	7220.30	388.20	-331.09	676.74	40°09'29.668"N	104°43'29.510"W	9.88	
7660.00†	87.871	179.277	7223.25	437.96	-380.99	677.14	40°09'29.175"N	104°43'29.505"W	5.13	7" CASING POINT
7703.00	90.030	178.820	7224.04	480.84	-423.98	677.85	40°09'28.750"N	104°43'29.496"W	5.13	
7734.00	90.270	179.320	7223.96	511.77	-454.97	678.35	40°09'28.444"N	104°43'29.489"W	1.79	
7826.00	91.290	178.600	7222.70	603.54	-546.95	680.02	40°09'27.535"N	104°43'29.468"W	1.36	
7917.00	90.730	179.450	7221.10	694.31	-637.92	681.57	40°09'26.636"N	104°43'29.448"W	1.12	
8008.00	90.210	179.390	7220.35	785.04	-728.91	682.49	40°09'25.737"N	104°43'29.436"W	0.58	
8099.00	90.270	180.040	7219.97	875.74	-819.91	682.94	40°09'24.838"N	104°43'29.430"W	0.72	
8191.00	90.430	179.840	7219.41	967.40	-911.91	683.04	40°09'23.928"N	104°43'29.429"W	0.28	
8282.00	89.660	179.160	7219.34	1058.13	-1002.90	683.84	40°09'23.029"N	104°43'29.419"W	1.13	
8372.00	89.350	178.760	7220.12	1147.92	-1092.88	685.47	40°09'22.140"N	104°43'29.398"W	0.56	
8464.00	89.380	179.380	7221.13	1239.68	-1184.87	686.96	40°09'21.231"N	104°43'29.379"W	0.67	
8557.00	89.320	178.710	7222.19	1332.45	-1277.85	688.51	40°09'20.312"N	104°43'29.359"W	0.72	
8650.00	89.720	180.470	7222.97	1425.15	-1370.84	689.18	40°09'19.393"N	104°43'29.350"W	1.94	
8743.00	90.150	180.380	7223.07	1517.75	-1463.83	688.49	40°09'18.474"N	104°43'29.359"W	0.47	
8836.00	90.460	179.720	7222.58	1610.39	-1556.83	688.41	40°09'17.555"N	104°43'29.360"W	0.78	
8930.00	90.180	179.980	7222.05	1704.06	-1650.83	688.65	40°09'16.626"N	104°43'29.357"W	0.41	
9023.00	89.380	180.590	7222.41	1796.67	-1743.83	688.19	40°09'15.707"N	104°43'29.363"W	1.08	
9117.00	89.930	180.420	7222.98	1890.24	-1837.82	687.36	40°09'14.778"N	104°43'29.374"W	0.61	
9211.00	89.250	181.260	7223.65	1983.76	-1931.81	685.98	40°09'13.850"N	104°43'29.392"W	1.15	
9304.00	89.370	180.780	7224.77	2076.25	-2024.79	684.33	40°09'12.931"N	104°43'29.413"W	0.53	
9398.00	89.910	180.660	7225.36	2169.79	-2118.78	683.15	40°09'12.002"N	104°43'29.428"W	0.59	
9491.00	89.620	180.090	7225.74	2262.39	-2211.77	682.54	40°09'11.083"N	104°43'29.436"W	0.69	
9576.00	88.620	180.670	7227.05	2347.01	-2296.76	681.97	40°09'10.243"N	104°43'29.443"W	1.36	
9662.00	88.680	180.760	7229.07	2432.56	-2382.73	680.90	40°09'09.394"N	104°43'29.457"W	0.13	
9747.00	88.700	180.240	7231.02	2517.16	-2467.70	680.16	40°09'08.554"N	104°43'29.467"W	0.61	
9832.00	89.010	180.950	7232.72	2601.74	-2552.68	679.28	40°09'07.714"N	104°43'29.478"W	0.91	
9917.00	89.290	180.290	7233.98	2686.33	-2637.67	678.36	40°09'06.874"N	104°43'29.490"W	0.84	
10002.00	89.220	179.500	7235.08	2771.02	-2722.66	678.51	40°09'06.034"N	104°43'29.488"W	0.93	
10088.00	89.870	180.650	7235.76	2856.69	-2808.65	678.40	40°09'05.185"N	104°43'29.489"W	1.54	
10173.00	90.060	180.880	7235.82	2941.26	-2893.65	677.27	40°09'04.345"N	104°43'29.504"W	0.35	
10258.00	90.150	179.950	7235.66	3025.89	-2978.64	676.65	40°09'03.505"N	104°43'29.512"W	1.10	
10343.00	90.030	179.460	7235.53	3110.61	-3063.64	677.09	40°09'02.665"N	104°43'29.506"W	0.59	
10429.00	89.870	178.910	7235.60	3196.39	-3149.63	678.31	40°09'01.815"N	104°43'29.491"W	0.67	
10514.00	90.640	179.190	7235.22	3281.18	-3234.62	679.72	40°09'00.975"N	104°43'29.473"W	0.96	
10599.00	90.520	178.160	7234.36	3366.00	-3319.59	681.69	40°09'00.136"N	104°43'29.447"W	1.22	
10684.00	90.430	179.760	7233.66	3450.80	-3404.57	683.23	40°08'59.296"N	104°43'29.428"W	1.89	
10770.00	89.870	178.630	7233.43	3536.57	-3490.56	684.44	40°08'58.446"N	104°43'29.412"W	1.47	



Actual Wellpath Report

DOVE 25N-13HZ AWP

Page 5 of 7



REFERENCE WELLPATH IDENTIFICATION

Operator	KERR-MCGEE OIL & GAS ONSHORE LP	Slot	SLOT#08 DOVE 25N-13HZ (365'FNL & 2117'FWL, SEC.12)
Area	COLORADO	Well	DOVE 25N-13HZ
Field	WELD COUNTY (KERR MCGEE)	Wellbore	DOVE 25N-13HZ AWB
Facility	SEC.12-T2N-R66W		

WELLPATH DATA (178 stations)

MD [ft]	Inclination [°]	Azimuth [°]	TVD [ft]	Vert Sect [ft]	North [ft]	East [ft]	Latitude	Longitude	DLS [°/100ft]	Comments
10855.00	89.840	178.830	7233.65	3621.40	-3575.54	686.32	40°08'57.606"N	104°43'29.388"W	0.24	
10940.00	89.500	179.840	7234.14	3706.16	-3660.53	687.31	40°08'56.766"N	104°43'29.375"W	1.25	
11025.00	91.530	179.830	7233.37	3790.86	-3745.52	687.55	40°08'55.926"N	104°43'29.372"W	2.39	
11111.00	91.470	179.610	7231.12	3876.54	-3831.49	687.97	40°08'55.077"N	104°43'29.367"W	0.27	
11196.00	90.860	180.750	7229.39	3961.18	-3916.47	687.71	40°08'54.237"N	104°43'29.370"W	1.52	
11281.00	90.580	180.240	7228.33	4045.79	-4001.46	686.97	40°08'53.397"N	104°43'29.380"W	0.68	
11366.00	89.840	178.050	7228.02	4130.57	-4086.45	688.24	40°08'52.557"N	104°43'29.363"W	2.72	
11452.00	90.360	179.570	7227.87	4216.38	-4172.42	690.03	40°08'51.708"N	104°43'29.340"W	1.87	
11537.00	89.870	179.280	7227.69	4301.13	-4257.42	690.88	40°08'50.868"N	104°43'29.329"W	0.67	
11622.00	90.030	181.700	7227.77	4385.74	-4342.41	690.15	40°08'50.028"N	104°43'29.339"W	2.85	
11707.00	90.060	179.520	7227.70	4470.34	-4427.40	689.25	40°08'49.188"N	104°43'29.350"W	2.56	
11792.00	89.690	178.580	7227.89	4555.13	-4512.39	690.66	40°08'48.348"N	104°43'29.332"W	1.19	
11878.00	89.840	179.010	7228.24	4640.95	-4598.37	692.46	40°08'47.499"N	104°43'29.309"W	0.53	
11963.00	89.600	177.970	7228.66	4725.79	-4683.34	694.70	40°08'46.659"N	104°43'29.280"W	1.26	
12048.00	88.610	178.270	7229.98	4810.66	-4768.28	697.49	40°08'45.819"N	104°43'29.244"W	1.22	
12133.00	89.010	178.530	7231.75	4895.50	-4853.23	699.87	40°08'44.980"N	104°43'29.214"W	0.56	
12219.00	88.960	180.760	7233.27	4981.20	-4939.21	700.40	40°08'44.130"N	104°43'29.207"W	2.59	
12304.00	89.500	181.140	7234.41	5065.74	-5024.19	698.99	40°08'43.291"N	104°43'29.225"W	0.78	
12389.00	89.220	181.660	7235.36	5150.22	-5109.16	696.91	40°08'42.451"N	104°43'29.252"W	0.69	
12474.00	87.980	179.620	7237.44	5234.78	-5194.12	695.96	40°08'41.611"N	104°43'29.264"W	2.81	
12560.00	87.490	179.730	7240.84	5320.44	-5280.05	696.45	40°08'40.762"N	104°43'29.258"W	0.58	
12645.00	87.650	180.160	7244.44	5405.05	-5364.97	696.53	40°08'39.923"N	104°43'29.257"W	0.54	
12730.00	89.440	180.280	7246.60	5489.67	-5449.94	696.21	40°08'39.083"N	104°43'29.261"W	2.11	
12815.00	89.840	181.800	7247.14	5574.21	-5534.92	694.66	40°08'38.243"N	104°43'29.281"W	1.85	
12901.00	90.860	182.740	7246.61	5659.52	-5620.85	691.26	40°08'37.394"N	104°43'29.325"W	1.61	
12986.00	91.600	181.870	7244.79	5743.82	-5705.76	687.84	40°08'36.555"N	104°43'29.369"W	1.34	
13071.00	90.610	183.220	7243.15	5828.08	-5790.66	684.06	40°08'35.716"N	104°43'29.418"W	1.97	
13156.00	91.320	183.760	7241.72	5912.14	-5875.49	678.89	40°08'34.878"N	104°43'29.484"W	1.05	
13241.00	90.210	184.050	7240.58	5996.12	-5960.28	673.10	40°08'34.040"N	104°43'29.559"W	1.35	
13327.00	90.000	183.010	7240.42	6081.18	-6046.12	667.81	40°08'33.192"N	104°43'29.627"W	1.23	
13412.00	90.120	182.410	7240.33	6165.42	-6131.02	663.79	40°08'32.353"N	104°43'29.679"W	0.72	
13497.00	88.700	183.560	7241.21	6249.60	-6215.90	659.36	40°08'31.514"N	104°43'29.736"W	2.15	
13582.00	88.890	183.700	7243.00	6333.63	-6300.71	653.98	40°08'30.676"N	104°43'29.805"W	0.28	
13667.00	89.040	183.370	7244.53	6417.69	-6385.53	648.74	40°08'29.838"N	104°43'29.873"W	0.43	
13753.00	89.650	183.690	7245.51	6502.74	-6471.36	643.45	40°08'28.989"N	104°43'29.941"W	0.80	
13838.00	90.270	183.660	7245.57	6586.78	-6556.19	638.00	40°08'28.151"N	104°43'30.011"W	0.73	
13923.00	90.790	183.810	7244.79	6670.81	-6641.01	632.46	40°08'27.313"N	104°43'30.082"W	0.64	
14008.00	88.290	183.180	7245.47	6754.88	-6725.84	627.28	40°08'26.475"N	104°43'30.149"W	3.03	
14093.00	88.570	182.850	7247.80	6839.02	-6810.69	622.81	40°08'25.636"N	104°43'30.207"W	0.51	
14178.00	89.070	182.690	7249.55	6923.24	-6895.57	618.71	40°08'24.797"N	104°43'30.260"W	0.62	
14263.00	90.030	182.890	7250.22	7007.46	-6980.47	614.57	40°08'23.959"N	104°43'30.313"W	1.15	
14288.00	90.120	182.470	7250.18	7032.24	-7005.44	613.40	40°08'23.712"N	104°43'30.328"W	1.72	LAST BHI MWD+IFR SURVEY
14343.00	90.120	182.470	7250.07	7086.78	-7060.39	611.03	40°08'23.169"N	104°43'30.358"W	0.00	PROJECTION TO BIT



Actual Wellpath Report

DOVE 25N-13HZ AWP

Page 6 of 7



REFERENCE WELLPATH IDENTIFICATION

Operator	KERR-MCGEE OIL & GAS ONSHORE LP	Slot	SLOT#08 DOVE 25N-13HZ (365'FNL & 2117'FWL, SEC.12)
Area	COLORADO	Well	DOVE 25N-13HZ
Field	WELD COUNTY (KERR MCGEE)	Wellbore	DOVE 25N-13HZ AWB
Facility	SEC.12-T2N-R66W		

HOLE & CASING SECTIONS - Ref Wellbore: DOVE 25N-13HZ AWB Ref Wellpath: DOVE 25N-13HZ AWP

String/Diameter	Start MD [ft]	End MD [ft]	Interval [ft]	Start TVD [ft]	End TVD [ft]	Start N/S [ft]	Start E/W [ft]	End N/S [ft]	End E/W [ft]
13.5in Open Hole	16.00	1022.00	1006.00	16.00	1021.99	0.00	0.00	-1.03	-1.53
9.625in Casing Surface	16.00	1022.00	1006.00	16.00	1021.99	0.00	0.00	-1.03	-1.53
8.75in Open Hole	1022.00	7670.00	6648.00	1021.99	7223.58	-1.03	-1.53	-390.99	677.27
7in Casing Intermediate	16.00	7660.00	7644.00	16.00	7223.25	0.00	0.00	-380.99	677.14
6.125in Open Hole	7660.00	14343.00	6683.00	7223.25	7250.07	-380.99	677.14	-7060.39	611.03

TARGETS

Name	MD [ft]	TVD [ft]	North [ft]	East [ft]	Grid East [US ft]	Grid North [US ft]	Latitude	Longitude	Shape
DOVE 1-12HZ PAD SECTION 12 HARDLINES (460' SET BACKS)		4998.00	6.72	2667.94	3218638.62	1301792.50	40°09'33.005"N	104°43'03.864"W	polygon
DOVE 1-12HZ PAD SECTION 12 LINES		4998.00	6.72	2667.94	3218638.62	1301792.50	40°09'33.005"N	104°43'03.864"W	polygon
DOVE 1-12HZ PAD SECTION 13 HARDLINES (460' SET BACKS)		4998.00	6.72	2667.94	3218638.62	1301792.50	40°09'33.005"N	104°43'03.864"W	polygon
DOVE 1-12HZ PAD SECTION 13 LINES		4998.00	6.72	2667.94	3218638.62	1301792.50	40°09'33.005"N	104°43'03.864"W	polygon
DOVE 25N-13HZ/25C-13HZ LAND BOX		7200.00	0.00	0.00	3215970.96	1301762.53	40°09'32.940"N	104°43'38.226"W	polygon
DOVE 25N-13HZ BHL ON PLAT REV-1 (2214'FNL & 2520'FEL, SEC.13)		7241.00	-7086.97	656.19	3216688.84	1294681.86	40°08'22.906"N	104°43'29.777"W	point

WELLPATH COMPOSITION - Ref Wellbore: DOVE 25N-13HZ AWB Ref Wellpath: DOVE 25N-13HZ AWP

Start MD [ft]	End MD [ft]	Positional Uncertainty Model	Log Name/Comment	Wellbore
16.00	936.00	Generic gyro - continuous (Standard)	MS GYRODATA SURVEYS <116-936>	DOVE 25N-13HZ AWB
936.00	7610.00	NaviTrak (MAGCORR,IFR)	BHI MWD+IFR SURVEYS 8 3/4" HOLE <1058-7610>	DOVE 25N-13HZ AWB
7610.00	14288.00	NaviTrak (MAGCORR,IFR)	BHI MWD+IFR SURVEYS 6 1/8" HOLE <7703-14288>	DOVE 25N-13HZ AWB
14288.00	14343.00	Blind Drilling (std)	Projection to bit	DOVE 25N-13HZ AWB



Actual Wellpath Report

DOVE 25N-13HZ AWP

Page 7 of 7



REFERENCE WELLPATH IDENTIFICATION

Operator	KERR-MCGEE OIL & GAS ONSHORE LP	Slot	SLOT#08 DOVE 25N-13HZ (365'FNL & 2117'FWL, SEC.12)
Area	COLORADO	Well	DOVE 25N-13HZ
Field	WELD COUNTY (KERR MCGEE)	Wellbore	DOVE 25N-13HZ AWB
Facility	SEC.12-T2N-R66W		

WELLPATH COMMENTS

MD [ft]	Inclination [°]	Azimuth [°]	TVD [ft]	Comment
16.00	0.000	251.010	16.00	TIE-ON
116.00	0.230	251.010	116.00	BEGIN GYRO SURVEYS
936.00	0.480	205.640	935.99	TIE-INTO GYRO SURVEYS
1058.00	0.570	260.440	1057.99	BEGIN BHI MWD+IFR SURVEYS
7660.00	87.871	179.277	7223.25	7" CASING POINT
14288.00	90.120	182.470	7250.18	LAST BHI MWD+IFR SURVEY
14343.00	90.120	182.470	7250.07	PROJECTION TO BIT