

Mesa Wireline

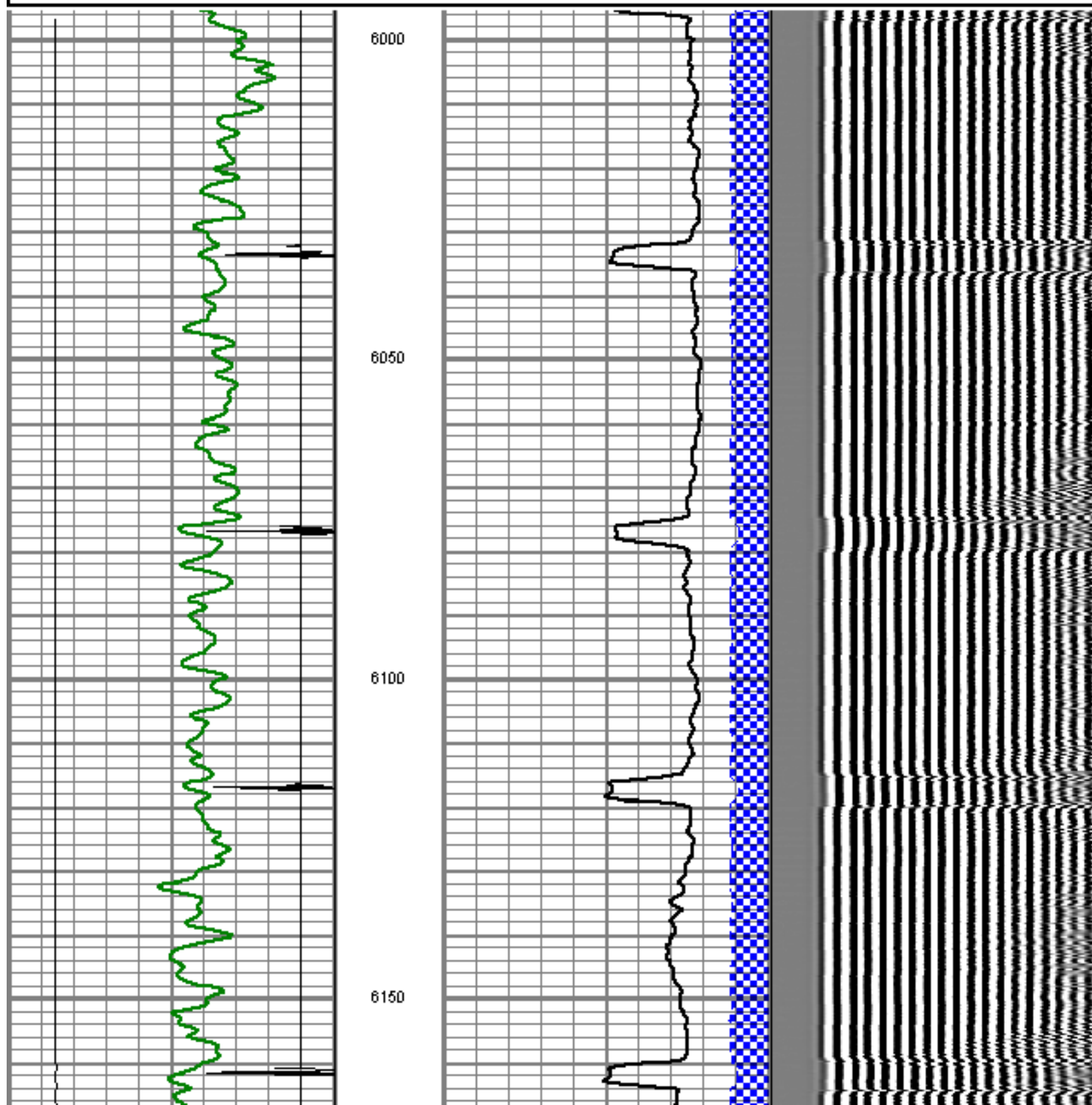


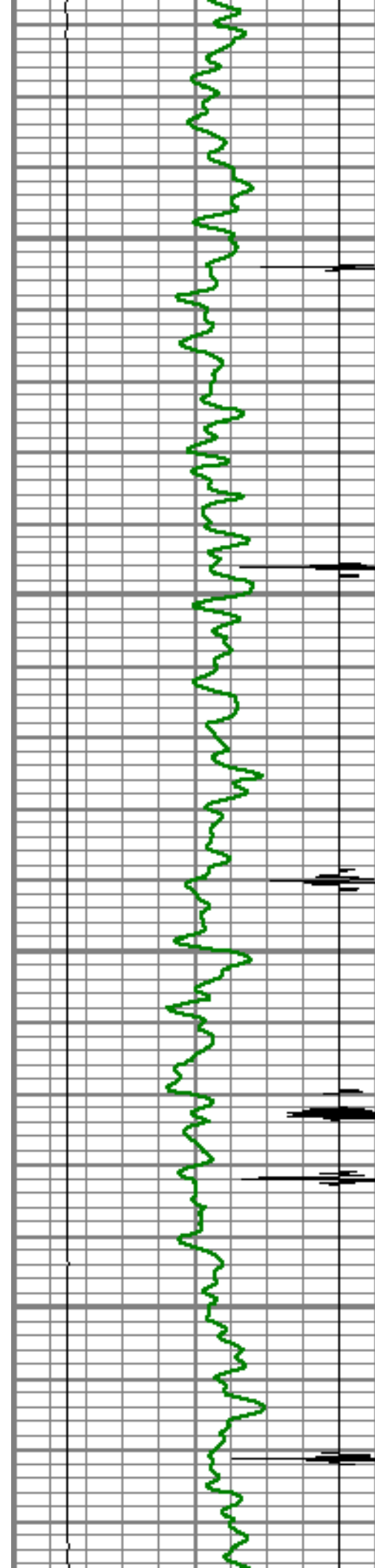
Database File: frederiksen #1.db
Dataset Pathname: pass4
Presentation Format: dcbl_prb
Dataset Creation: Fri Jul 19 13:52:14 2013 by Log Std Casedhole 09061
Charted by: Depth in Feet scaled 1:240

0	Gamma Ray (GAPI)	200
0	LTEN (lb)	5000
9	CCL	-1

0	Amplified Amplitude (mV)	20
0	Amplitude (mV)	100
0	TT3 (usec)	280

200 Variable Density 1200



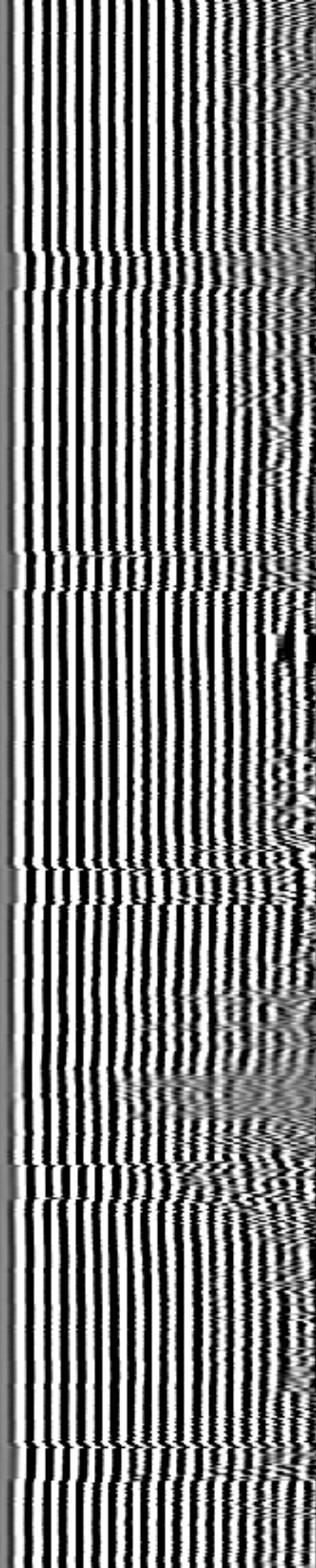
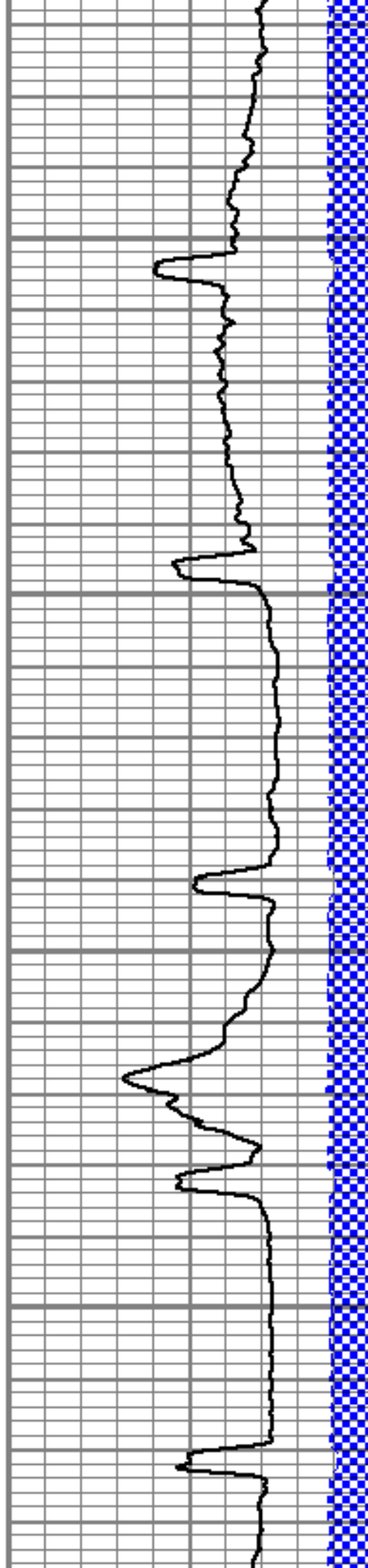


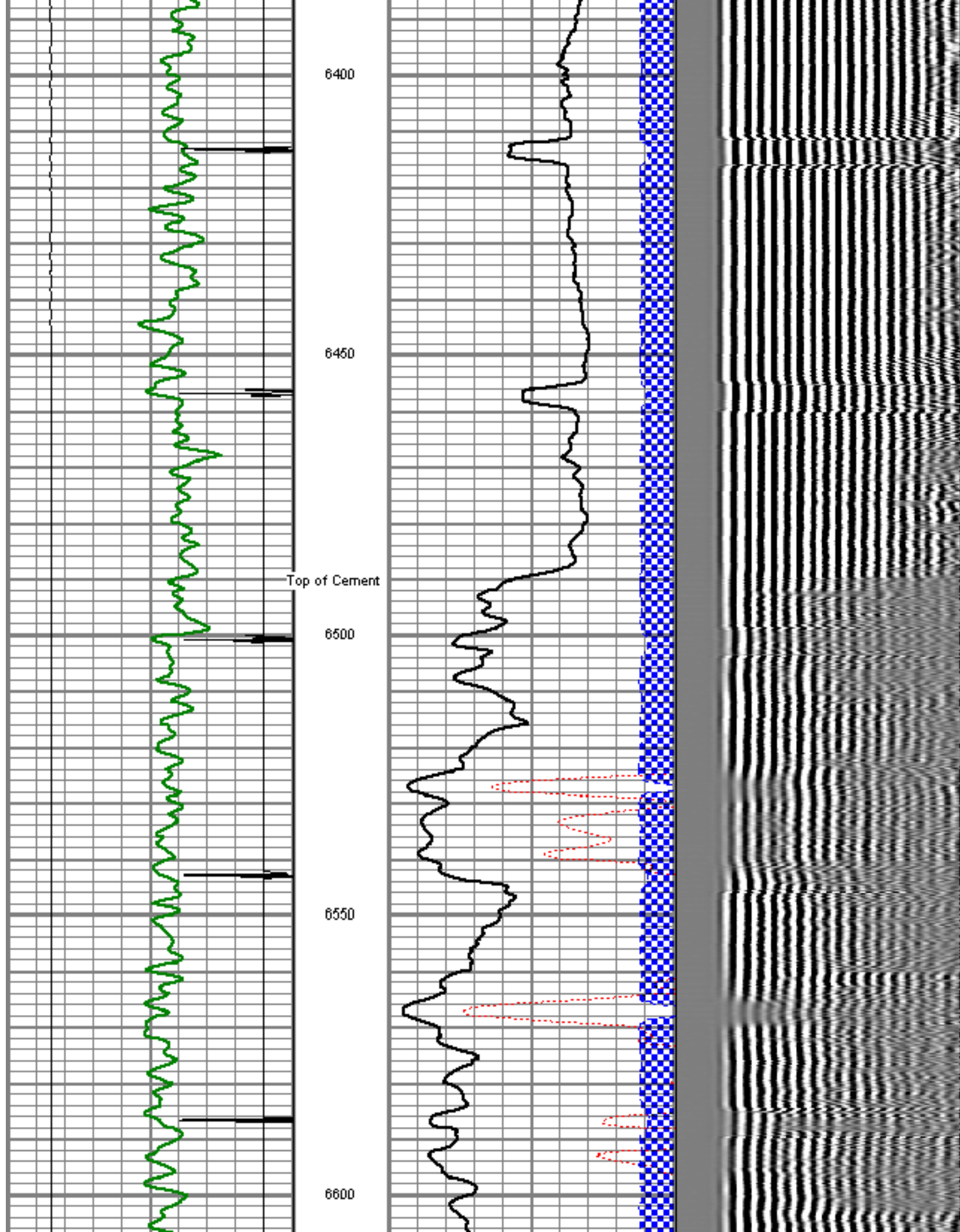
6200

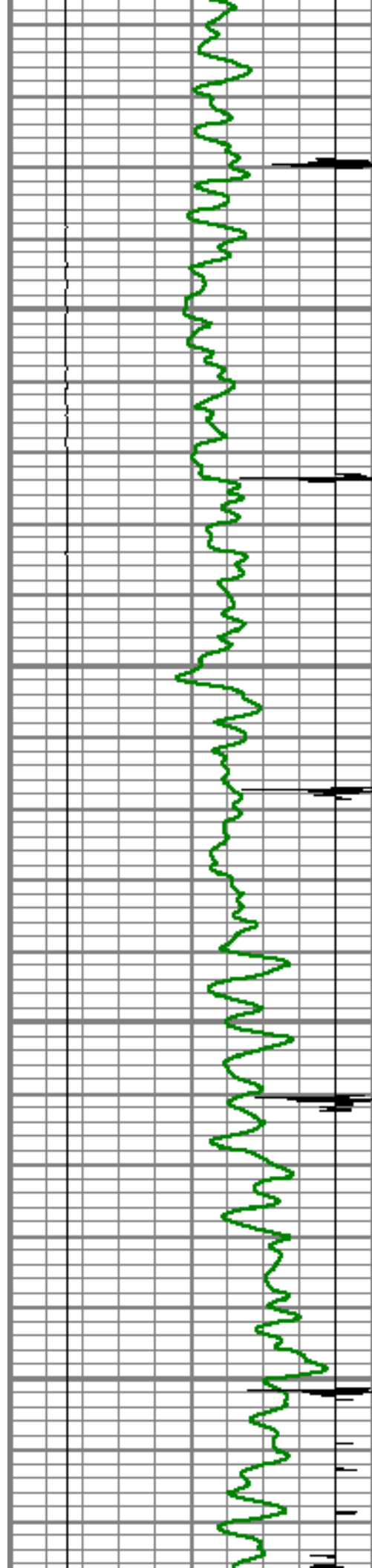
6250

6300

6350





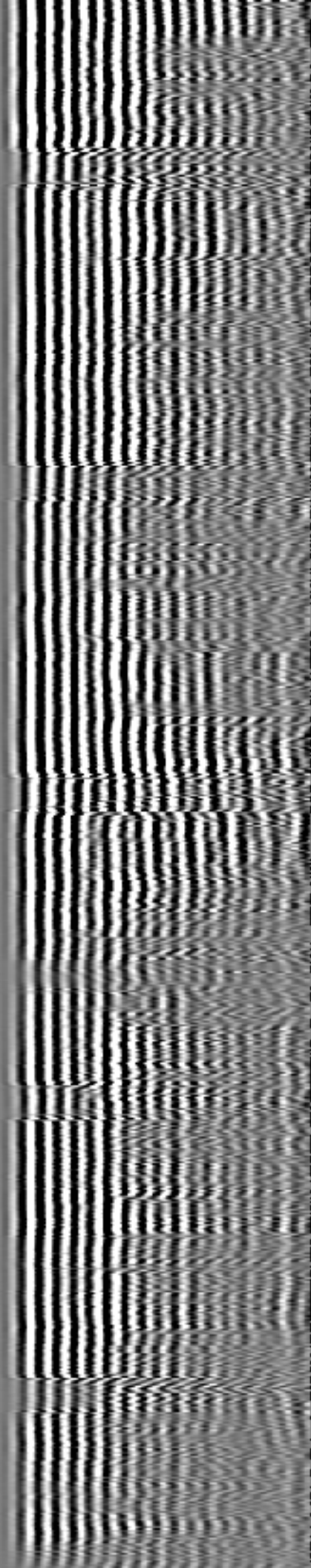
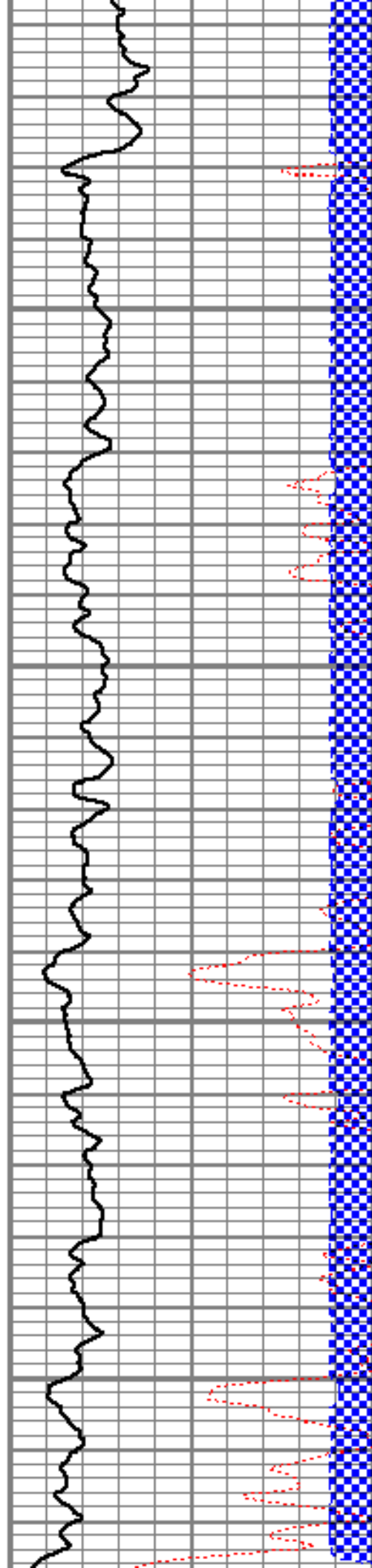


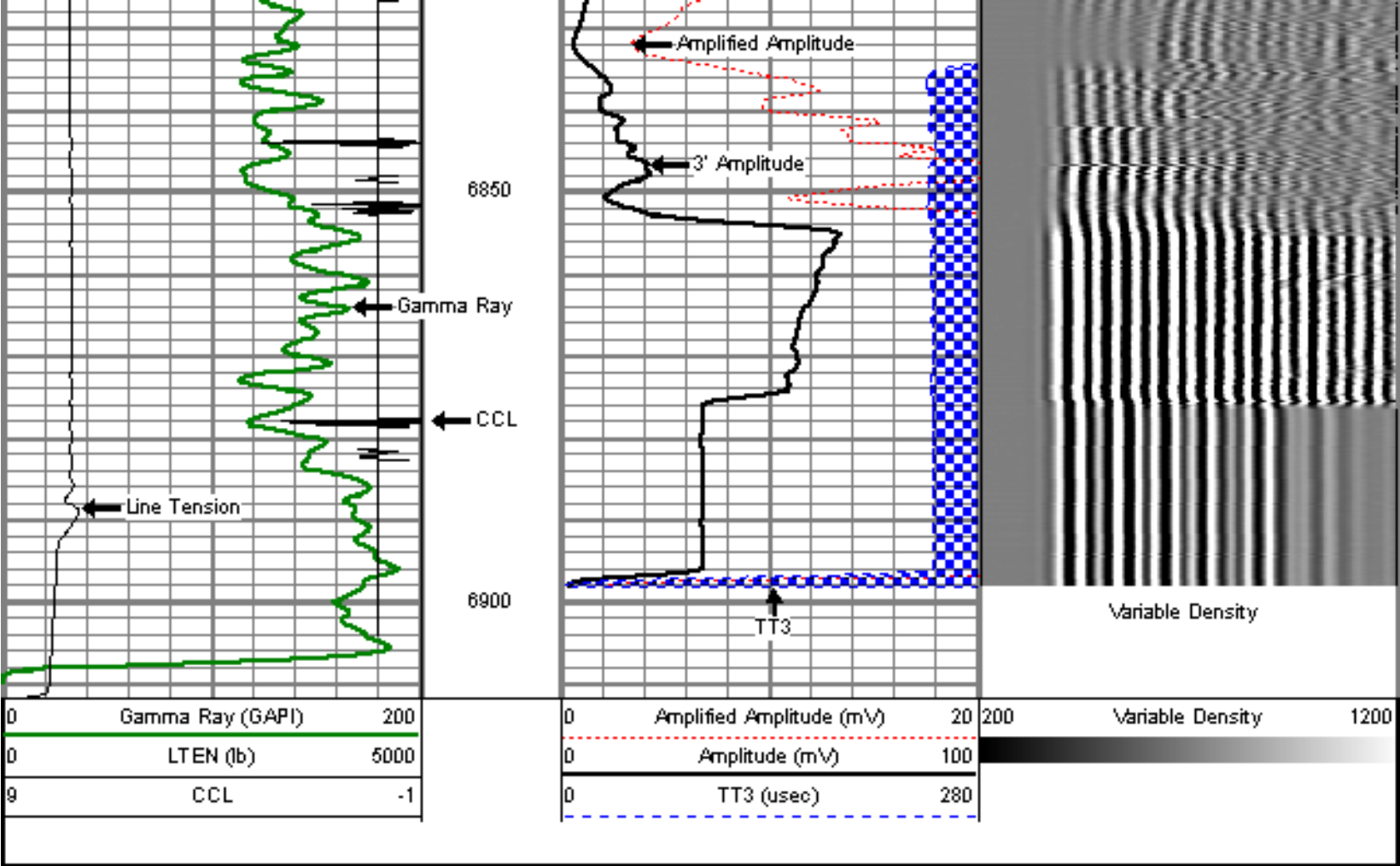
6650

6700

6750

6800





Sensor	Offset (ft)	Schematic	Description	Len (ft)	OD (in)	Wt (lb)
			titan Titan Cable Head Go Pk.	1.02	1.44	1.50
			Centralizer-Probe (CENT-PROBE-2) Probe Bowspring Centralizer	2.88	2.75	10.00
WVF3	14.54		CBL-PRB_CBL_DIGITAL (PRB_CBL_DIG_28.7711) Probe 2.75" Dual Receiver Board		2.75	60.00
WVF5	13.54					

				Centralizer-Probe (CENT-PROBE-1) Probe Bowspring Centralizer	2.88	2.75	10.00
CCL	6.50						
				GR-PROBE_GRCLL (PRB_GRCLL_275_01) Probe 275" 4 Channel Probe	4.54	2.75	30.00
GR	3.77						
				TEMP-Comprobe (TEMP_CMPRB_1375_01) Positive probe Temp tool	12.88	1.38	15.00
TEMP	0.17						
Dataset: frederiksen #1.db: field/well/run1/pass4 Total Length: 22.96 ft Total Weight: 126.50 lb O.D.: 2.75 in							



Company ENCANA OIL & GAS (USA) INC.
 Well FREDERIKSEN #1
 Field WATTENBERG
 County WELD
 State COLORADO