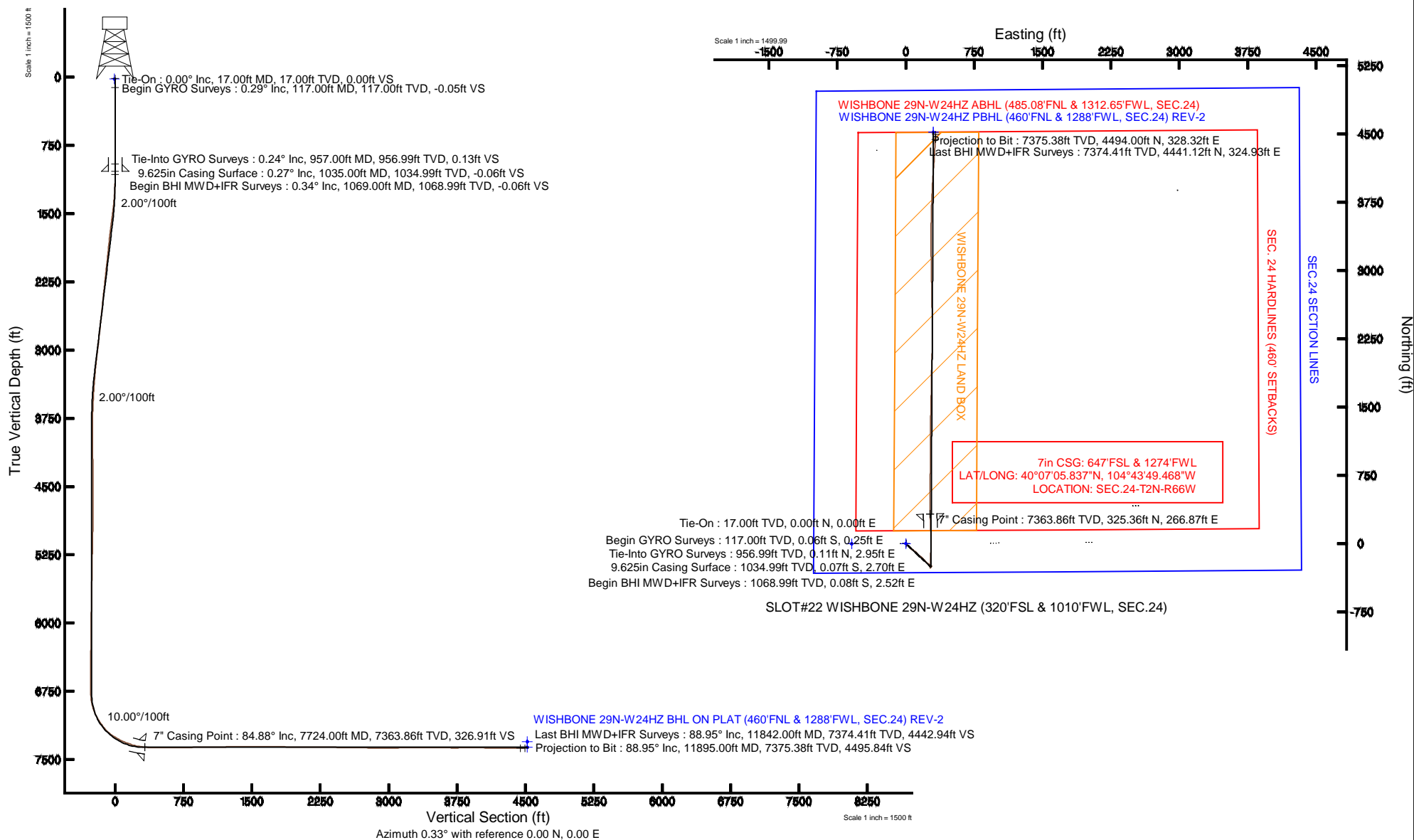


# KERR-MCGEE OIL & GAS ONSHORE LP

Location: COLORADO Slot: SLOT#22 WISHBONE 29N-W24HZ (320'FSL & 1010'FWL, SEC.24)  
 Field: WELD COUNTY (KERR MCGEE) Well: WISHBONE 29N-W24HZ  
 Facility: SEC.24-T2N-R66W Wellbore: WISHBONE 29N-W24HZ PWB

Plot reference wellpath is WISHBONE 29N-W24HZ (REV-B.0)	
True vertical depths are referenced to Rig on SLOT#22 WISHBONE 29N-W24HZ (320'FSL & 1010'FWL, SEC.24) (RKB)	Grid System: NAD83 / Lambert Colorado SP, Northern Zone (501), US feet
Measured depths are referenced to Rig on SLOT#22 WISHBONE 29N-W24HZ (320'FSL & 1010'FWL, SEC.24) (RKB)	North Reference: True north
Rig on SLOT#22 WISHBONE 29N-W24HZ (320'FSL & 1010'FWL, SEC.24) (RKB) to Mean Sea Level: 5099 feet	Scale: True distance
Mean Sea Level to Mud line (At Slot: SLOT#22 WISHBONE 29N-W24HZ (320'FSL & 1010'FWL, SEC.24)): 0 feet	Depths are in feet
Coordinates are in feet referenced to Slot	Created by: robale01 on 18/Jul/2013





# Actual Wellpath Report

WISHBONE 29N-W24HZ AWP

Page 1 of 6



REFERENCE WELLPATH IDENTIFICATION			
Operator	KERR-MCGEE OIL & GAS ONSHORE LP	Slot	SLOT#22 WISHBONE 29N-W24HZ (320'FSL & 1010'FWL, SEC.24)
Area	COLORADO	Well	WISHBONE 29N-W24HZ
Field	WELD COUNTY (KERR MCGEE)	Wellbore	WISHBONE 29N-W24HZ AWB
Facility	SEC.24-T2N-R66W		

REPORT SETUP INFORMATION			
Projection System	NAD83 / Lambert Colorado SP, Northern Zone (501), US feet	Software System	WellArchitect® 4.0.0
North Reference	True	User	Robiale01
Scale	0.99996	Report Generated	18/Jul/2013 at 09:53
Convergence at slot	n/a	Database/Source file	WA_ANADARKO/WISHBONE_29N-W24HZ_AWB.xml

WELLPATH LOCATION						
	Local coordinates		Grid coordinates		Geographic coordinates	
	North[ft]	East[ft]	Easting[US ft]	Northing[US ft]	Latitude	Longitude
Slot Location	3.34	592.69	3214963.34	1286542.70	40°07'02.622"N	104°43'52.903"W
Facility Reference Pt			3214370.72	1286534.23	40°07'02.589"N	104°44'00.532"W
Field Reference Pt			3197771.84	1268891.29	40°04'09.600"N	104°47'36.000"W

WELLPATH DATUM			
Calculation method	Minimum curvature	Rig on SLOT#22 WISHBONE 29N-W24HZ (320'FSL & 1010'FWL, SEC.24) (RKB) to Facility Vertical Datum	5099.00ft
Horizontal Reference Pt	Slot	Rig on SLOT#22 WISHBONE 29N-W24HZ (320'FSL & 1010'FWL, SEC.24) (RKB) to Mean Sea Level	5099.00ft
Vertical Reference Pt	Rig on SLOT#22 WISHBONE 29N-W24HZ (320'FSL & 1010'FWL, SEC.24) (RKB)	Rig on SLOT#22 WISHBONE 29N-W24HZ (320'FSL & 1010'FWL, SEC.24) (RKB) to Mud Line at Slot (SLOT#22 WISHBONE 29N-W24HZ (320'FSL & 1010'FWL, SEC.24))	5099.00ft
MD Reference Pt	Rig on SLOT#22 WISHBONE 29N-W24HZ (320'FSL & 1010'FWL, SEC.24) (RKB)	Section Origin	N 0.00, E 0.00 ft
Field Vertical Reference	Mean Sea Level	Section Azimuth	0.33°



# Actual Wellpath Report

WISHBONE 29N-W24HZ AWP

Page 2 of 6



## REFERENCE WELLPATH IDENTIFICATION

Operator	KERR-MCGEE OIL & GAS ONSHORE LP	Slot	SLOT#22 WISHBONE 29N-W24HZ (320'FSL & 1010'FWL, SEC.24)
Area	COLORADO	Well	WISHBONE 29N-W24HZ
Field	WELD COUNTY (KERR MCGEE)	Wellbore	WISHBONE 29N-W24HZ AWB
Facility	SEC.24-T2N-R66W		

## WELLPATH DATA (127 stations) † = interpolated/extrapolated station

MD [ft]	Inclination [°]	Azimuth [°]	TVD [ft]	Vert Sect [ft]	North [ft]	East [ft]	Latitude	Longitude	DLS [°/100ft]	Comments
0.00†	0.000	102.620	0.00	0.00	0.00	0.00	40°07'02.622"N	104°43'52.903"W	0.00	
17.00	0.000	102.620	17.00	0.00	0.00	0.00	40°07'02.622"N	104°43'52.903"W	0.00	Tie-On
117.00	0.290	102.620	117.00	-0.05	-0.06	0.25	40°07'02.621"N	104°43'52.900"W	0.29	Begin GYRO Surveys
217.00	0.090	37.330	217.00	-0.04	-0.05	0.54	40°07'02.622"N	104°43'52.896"W	0.27	
317.00	0.280	67.300	317.00	0.11	0.11	0.81	40°07'02.623"N	104°43'52.893"W	0.21	
417.00	0.200	21.150	417.00	0.37	0.37	1.10	40°07'02.626"N	104°43'52.889"W	0.20	
517.00	0.170	81.330	517.00	0.56	0.55	1.31	40°07'02.627"N	104°43'52.886"W	0.19	
617.00	0.280	95.090	617.00	0.56	0.55	1.70	40°07'02.627"N	104°43'52.881"W	0.12	
717.00	0.310	100.060	717.00	0.50	0.48	2.21	40°07'02.627"N	104°43'52.875"W	0.04	
817.00	0.140	91.350	816.99	0.45	0.43	2.60	40°07'02.626"N	104°43'52.870"W	0.17	
917.00	0.290	133.730	916.99	0.27	0.25	2.91	40°07'02.625"N	104°43'52.866"W	0.21	
957.00	0.240	203.950	956.99	0.13	0.11	2.95	40°07'02.623"N	104°43'52.865"W	0.77	Tie-Into GYRO Surveys
1069.00	0.340	275.280	1068.99	-0.06	-0.08	2.52	40°07'02.621"N	104°43'52.871"W	0.31	Begin BHI MWD+IFR Surveys
1160.00	1.790	133.620	1159.98	-1.01	-1.03	3.28	40°07'02.612"N	104°43'52.861"W	2.27	
1251.00	4.190	140.980	1250.85	-4.56	-4.60	6.40	40°07'02.577"N	104°43'52.821"W	2.67	
1342.00	6.570	136.830	1341.44	-10.91	-10.98	12.06	40°07'02.514"N	104°43'52.748"W	2.65	
1433.00	8.940	137.990	1431.60	-19.91	-20.03	20.35	40°07'02.424"N	104°43'52.641"W	2.61	
1524.00	10.790	132.380	1521.26	-30.84	-31.02	31.38	40°07'02.315"N	104°43'52.499"W	2.29	
1615.00	10.860	132.410	1610.64	-42.29	-42.55	44.00	40°07'02.202"N	104°43'52.337"W	0.08	
1706.00	10.690	129.770	1700.03	-53.40	-53.73	56.82	40°07'02.091"N	104°43'52.172"W	0.57	
1798.00	9.830	129.110	1790.56	-63.74	-64.14	69.47	40°07'01.988"N	104°43'52.009"W	0.94	
1890.00	9.710	128.690	1881.23	-73.47	-73.94	81.62	40°07'01.891"N	104°43'51.852"W	0.15	
1980.00	9.300	127.780	1969.99	-82.60	-83.14	93.29	40°07'01.800"N	104°43'51.702"W	0.49	
2071.00	9.180	131.790	2059.81	-91.88	-92.49	104.51	40°07'01.708"N	104°43'51.558"W	0.72	
2163.00	9.050	132.800	2150.65	-101.62	-102.29	115.29	40°07'01.611"N	104°43'51.419"W	0.22	
2254.00	8.470	132.990	2240.59	-110.99	-111.73	125.45	40°07'01.518"N	104°43'51.288"W	0.64	
2345.00	9.550	133.330	2330.46	-120.68	-121.48	135.84	40°07'01.422"N	104°43'51.154"W	1.19	
2435.00	8.790	131.100	2419.31	-130.26	-131.12	146.45	40°07'01.326"N	104°43'51.018"W	0.93	
2525.00	9.270	131.720	2508.20	-139.55	-140.46	157.05	40°07'01.234"N	104°43'50.882"W	0.54	
2614.00	8.310	132.340	2596.15	-148.59	-149.57	167.15	40°07'01.144"N	104°43'50.751"W	1.08	
2705.00	8.920	134.370	2686.12	-157.89	-158.93	177.06	40°07'01.051"N	104°43'50.624"W	0.75	
2790.00	9.730	135.790	2770.00	-167.59	-168.69	186.78	40°07'00.955"N	104°43'50.499"W	0.99	
2875.00	8.060	135.970	2853.97	-176.97	-178.12	195.93	40°07'00.862"N	104°43'50.381"W	1.96	
2960.00	9.590	134.670	2937.97	-186.18	-187.38	205.10	40°07'00.770"N	104°43'50.263"W	1.82	
3046.00	9.910	131.380	3022.72	-196.05	-197.31	215.75	40°07'00.672"N	104°43'50.126"W	0.75	
3131.00	9.430	132.920	3106.52	-205.56	-206.89	226.34	40°07'00.577"N	104°43'49.990"W	0.64	
3216.00	8.530	131.800	3190.47	-214.45	-215.83	236.14	40°07'00.489"N	104°43'49.864"W	1.08	
3301.00	7.590	133.370	3274.63	-222.46	-223.89	244.92	40°07'00.409"N	104°43'49.751"W	1.14	
3387.00	6.360	131.560	3360.00	-229.47	-230.95	252.61	40°07'00.340"N	104°43'49.651"W	1.45	
3472.00	5.160	134.100	3444.56	-235.22	-236.73	258.88	40°07'00.283"N	104°43'49.571"W	1.44	
3558.00	4.310	132.490	3530.27	-240.06	-241.61	264.04	40°07'00.234"N	104°43'49.504"W	1.00	
3643.00	3.430	134.290	3615.08	-243.97	-245.54	268.21	40°07'00.196"N	104°43'49.451"W	1.04	
3729.00	2.160	127.990	3700.97	-246.75	-248.33	271.33	40°07'00.168"N	104°43'49.411"W	1.52	
3814.00	1.950	119.440	3785.92	-248.43	-250.03	273.86	40°07'00.151"N	104°43'49.378"W	0.44	
3899.00	1.340	102.760	3870.88	-249.35	-250.96	276.08	40°07'00.142"N	104°43'49.349"W	0.91	



# Actual Wellpath Report

WISHBONE 29N-W24HZ AWP

Page 3 of 6



REFERENCE WELLPATH IDENTIFICATION			
Operator	KERR-MCGEE OIL & GAS ONSHORE LP	Slot	SLOT#22 WISHBONE 29N-W24HZ (320'FSL & 1010'FWL, SEC.24)
Area	COLORADO	Well	WISHBONE 29N-W24HZ
Field	WELD COUNTY (KERR MCGEE)	Wellbore	WISHBONE 29N-W24HZ AWB
Facility	SEC.24-T2N-R66W		

WELLPATH DATA (127 stations) † = interpolated/extrapolated station										
MD [ft]	Inclination [°]	Azimuth [°]	TVD [ft]	Vert Sect [ft]	North [ft]	East [ft]	Latitude	Longitude	DLS [°/100ft]	Comments
4241.00	1.680	30.510	4212.79	-245.87	-247.52	282.53	40°07'00.176"N	104°43'49.266"W	0.53	
4326.00	1.020	337.560	4297.77	-244.10	-245.75	282.87	40°07'00.193"N	104°43'49.262"W	1.58	
4582.00	0.790	255.980	4553.75	-242.44	-244.07	280.29	40°07'00.210"N	104°43'49.295"W	0.47	
4924.00	0.590	197.950	4895.72	-244.70	-246.32	277.46	40°07'00.188"N	104°43'49.332"W	0.20	
5266.00	2.450	231.970	5237.59	-250.91	-252.50	271.16	40°07'00.127"N	104°43'49.413"W	0.58	
5351.00	2.260	231.790	5322.52	-253.09	-254.65	268.41	40°07'00.105"N	104°43'49.448"W	0.22	
5436.00	0.890	218.030	5407.49	-254.65	-256.21	266.69	40°07'00.090"N	104°43'49.470"W	1.66	
5522.00	0.930	130.710	5493.48	-255.63	-257.19	266.81	40°07'00.080"N	104°43'49.469"W	1.46	
5863.00	1.170	215.690	5834.44	-260.27	-261.83	266.87	40°07'00.035"N	104°43'49.468"W	0.42	
6034.00	1.480	225.110	6005.39	-263.26	-264.80	264.29	40°07'00.005"N	104°43'49.501"W	0.22	
6119.00	0.510	182.160	6090.38	-264.41	-265.95	263.50	40°06'59.994"N	104°43'49.511"W	1.36	
6460.00	0.960	107.460	6431.36	-266.77	-268.33	266.17	40°06'59.970"N	104°43'49.477"W	0.28	
6631.00	0.890	97.040	6602.34	-267.35	-268.92	268.85	40°06'59.964"N	104°43'49.442"W	0.11	
6716.00	0.170	58.420	6687.33	-267.36	-268.94	269.61	40°06'59.964"N	104°43'49.433"W	0.90	
6801.00	0.550	14.900	6772.33	-266.90	-268.48	269.83	40°06'59.969"N	104°43'49.430"W	0.52	
6844.00	4.160	4.770	6815.29	-265.14	-266.72	270.01	40°06'59.986"N	104°43'49.428"W	8.42	
6887.00	8.470	3.640	6858.02	-260.42	-262.00	270.34	40°07'00.033"N	104°43'49.423"W	10.03	
6929.00	13.060	1.560	6899.27	-252.59	-254.17	270.66	40°07'00.110"N	104°43'49.419"W	10.97	
6972.00	17.820	359.860	6940.70	-241.14	-242.73	270.78	40°07'00.223"N	104°43'49.418"W	11.12	
7015.00	23.400	358.290	6980.94	-226.02	-227.60	270.51	40°07'00.373"N	104°43'49.421"W	13.04	
7057.00	27.970	358.970	7018.78	-207.83	-209.41	270.08	40°07'00.553"N	104°43'49.427"W	10.90	
7100.00	30.610	0.910	7056.28	-186.80	-188.37	270.08	40°07'00.760"N	104°43'49.427"W	6.52	
7142.00	33.210	1.720	7091.93	-164.60	-166.18	270.59	40°07'00.980"N	104°43'49.420"W	6.27	
7185.00	36.540	2.660	7127.20	-140.03	-141.62	271.54	40°07'01.223"N	104°43'49.408"W	7.84	
7228.00	40.460	4.030	7160.84	-113.31	-114.90	273.11	40°07'01.487"N	104°43'49.388"W	9.33	
7270.00	46.420	3.790	7191.33	-84.50	-86.10	275.08	40°07'01.771"N	104°43'49.362"W	14.20	
7313.00	51.290	2.490	7219.61	-52.17	-53.78	276.84	40°07'02.091"N	104°43'49.340"W	11.55	
7356.00	57.290	359.820	7244.70	-17.28	-18.89	277.51	40°07'02.435"N	104°43'49.331"W	14.83	
7398.00	60.910	359.830	7266.27	18.76	17.14	277.40	40°07'02.791"N	104°43'49.332"W	8.62	
7441.00	63.580	358.650	7286.29	56.80	55.18	276.89	40°07'03.167"N	104°43'49.339"W	6.67	
7483.00	66.810	357.820	7303.91	94.89	93.28	275.71	40°07'03.544"N	104°43'49.354"W	7.90	
7526.00	69.740	357.890	7319.82	134.79	133.20	274.22	40°07'03.938"N	104°43'49.373"W	6.82	
7569.00	72.140	358.060	7333.86	175.40	173.81	272.78	40°07'04.340"N	104°43'49.392"W	5.59	
7612.00	75.150	357.800	7345.97	216.62	215.04	271.29	40°07'04.747"N	104°43'49.411"W	7.02	
7654.00	79.810	357.150	7355.07	257.56	255.99	269.49	40°07'05.152"N	104°43'49.434"W	11.20	
7691.00	83.370	357.960	7360.48	294.11	292.55	267.93	40°07'05.513"N	104°43'49.454"W	9.86	
7724.00†	84.878	358.366	7363.86	326.91	325.36	266.87	40°07'05.837"N	104°43'49.468"W	4.73	7" Casing Point
7761.00	86.570	358.820	7366.62	363.79	362.25	265.97	40°07'06.202"N	104°43'49.479"W	4.73	
7846.00	88.530	359.970	7370.25	448.70	447.16	265.07	40°07'07.041"N	104°43'49.491"W	2.67	
7931.00	90.620	0.920	7370.88	533.69	532.15	265.73	40°07'07.881"N	104°43'49.482"W	2.70	
8102.00	91.670	0.830	7367.47	704.64	703.09	268.34	40°07'09.570"N	104°43'49.449"W	0.62	
8187.00	90.000	0.330	7366.23	789.63	788.07	269.20	40°07'10.410"N	104°43'49.438"W	2.05	
8358.00	90.560	0.060	7365.39	960.63	959.07	269.79	40°07'12.100"N	104°43'49.430"W	0.36	
8443.00	90.560	359.810	7364.56	1045.62	1044.07	269.69	40°07'12.940"N	104°43'49.431"W	0.29	
8528.00	91.370	0.060	7363.13	1130.61	1129.05	269.59	40°07'13.779"N	104°43'49.433"W	1.00	



# Actual Wellpath Report

WISHBONE 29N-W24HZ AWP

Page 4 of 6



## REFERENCE WELLPATH IDENTIFICATION

Operator	KERR-MCGEE OIL & GAS ONSHORE LP	Slot	SLOT#22 WISHBONE 29N-W24HZ (320'FSL & 1010'FWL, SEC.24)
Area	COLORADO	Well	WISHBONE 29N-W24HZ
Field	WELD COUNTY (KERR MCGEE)	Wellbore	WISHBONE 29N-W24HZ AWB
Facility	SEC.24-T2N-R66W		

## WELLPATH DATA (127 stations)

MD [ft]	Inclination [°]	Azimuth [°]	TVD [ft]	Vert Sect [ft]	North [ft]	East [ft]	Latitude	Longitude	DLS [°/100ft]	Comments
8614.00	91.290	0.740	7361.13	1216.58	1215.03	270.19	40°07'14.629"N	104°43'49.425"W	0.80	
8699.00	90.340	1.360	7359.93	1301.57	1300.00	271.75	40°07'15.469"N	104°43'49.405"W	1.33	
8784.00	89.260	1.280	7360.22	1386.55	1384.98	273.71	40°07'16.309"N	104°43'49.380"W	1.27	
8954.00	91.290	1.440	7359.41	1556.51	1554.92	277.74	40°07'17.988"N	104°43'49.328"W	1.20	
9040.00	89.570	0.540	7358.76	1642.50	1640.90	279.23	40°07'18.838"N	104°43'49.309"W	2.26	
9125.00	89.780	1.350	7359.24	1727.49	1725.89	280.63	40°07'19.677"N	104°43'49.291"W	0.98	
9210.00	88.850	1.200	7360.26	1812.48	1810.86	282.52	40°07'20.517"N	104°43'49.266"W	1.11	
9296.00	89.720	0.670	7361.33	1898.46	1896.84	283.92	40°07'21.367"N	104°43'49.248"W	1.18	
9381.00	89.850	1.960	7361.65	1983.45	1981.82	285.88	40°07'22.207"N	104°43'49.223"W	1.53	
9466.00	89.110	1.530	7362.42	2068.42	2066.77	288.46	40°07'23.046"N	104°43'49.190"W	1.01	
9551.00	90.030	1.330	7363.06	2153.40	2151.74	290.58	40°07'23.886"N	104°43'49.162"W	1.11	
9722.00	89.230	0.270	7364.17	2324.39	2322.72	292.97	40°07'25.575"N	104°43'49.132"W	0.78	
9807.00	88.890	359.050	7365.56	2409.37	2407.70	292.47	40°07'26.415"N	104°43'49.138"W	1.49	
9892.00	89.130	358.770	7367.03	2494.33	2492.68	290.85	40°07'27.255"N	104°43'49.159"W	0.43	
10063.00	89.040	359.150	7369.76	2665.26	2663.62	287.75	40°07'28.944"N	104°43'49.199"W	0.23	
10148.00	89.350	358.850	7370.95	2750.23	2748.60	286.26	40°07'29.784"N	104°43'49.218"W	0.51	
10233.00	89.380	358.900	7371.90	2835.19	2833.58	284.60	40°07'30.624"N	104°43'49.239"W	0.07	
10318.00	89.540	359.010	7372.70	2920.16	2918.56	283.05	40°07'31.464"N	104°43'49.259"W	0.23	
10403.00	90.430	358.680	7372.72	3005.13	3003.55	281.33	40°07'32.303"N	104°43'49.281"W	1.12	
10489.00	91.230	359.310	7371.47	3091.10	3089.52	279.82	40°07'33.153"N	104°43'49.301"W	1.18	
10574.00	91.760	358.990	7369.26	3176.05	3174.48	278.56	40°07'33.993"N	104°43'49.317"W	0.73	
10659.00	89.110	359.050	7368.61	3261.02	3259.46	277.11	40°07'34.832"N	104°43'49.336"W	3.12	
10744.00	89.720	0.750	7369.48	3346.01	3344.45	276.96	40°07'35.672"N	104°43'49.338"W	2.12	
10829.00	89.140	359.900	7370.32	3431.01	3429.45	277.44	40°07'36.512"N	104°43'49.331"W	1.21	
10914.00	90.030	1.960	7370.94	3515.99	3514.43	278.82	40°07'37.352"N	104°43'49.314"W	2.64	
11000.00	90.030	1.330	7370.89	3601.97	3600.39	281.29	40°07'38.201"N	104°43'49.282"W	0.73	
11085.00	89.660	1.240	7371.12	3686.96	3685.37	283.20	40°07'39.041"N	104°43'49.257"W	0.45	
11170.00	90.400	2.250	7371.08	3771.93	3770.33	285.79	40°07'39.881"N	104°43'49.224"W	1.47	
11255.00	90.120	2.510	7370.69	3856.88	3855.25	289.32	40°07'40.720"N	104°43'49.178"W	0.45	
11341.00	89.970	2.760	7370.63	3942.81	3941.16	293.27	40°07'41.569"N	104°43'49.128"W	0.34	
11426.00	89.600	2.850	7370.95	4027.73	4026.06	297.43	40°07'42.408"N	104°43'49.074"W	0.45	
11511.00	89.970	4.700	7371.26	4112.57	4110.87	303.03	40°07'43.246"N	104°43'49.002"W	2.22	
11596.00	89.320	4.020	7371.79	4197.36	4195.62	309.49	40°07'44.084"N	104°43'48.919"W	1.11	
11682.00	90.000	3.730	7372.30	4283.19	4281.42	315.30	40°07'44.932"N	104°43'48.844"W	0.86	
11767.00	88.980	3.200	7373.06	4368.06	4366.26	320.44	40°07'45.770"N	104°43'48.778"W	1.35	
11842.00	88.950	3.670	7374.41	4442.94	4441.12	324.93	40°07'46.510"N	104°43'48.720"W	0.63	Last BHI MWD+IFR Surveys
11895.00	88.950	3.670	7375.38	4495.84	4494.00	328.32	40°07'47.032"N	104°43'48.676"W	0.00	Projection to Bit



# Actual Wellpath Report

WISHBONE 29N-W24HZ AWP

Page 5 of 6



## REFERENCE WELLPATH IDENTIFICATION

Operator	KERR-MCGEE OIL & GAS ONSHORE LP	Slot	SLOT#22 WISHBONE 29N-W24HZ (320'FSL & 1010'FWL, SEC.24)
Area	COLORADO	Well	WISHBONE 29N-W24HZ
Field	WELD COUNTY (KERR MCGEE)	Wellbore	WISHBONE 29N-W24HZ AWB
Facility	SEC.24-T2N-R66W		

## HOLE & CASING SECTIONS - Ref Wellbore: WISHBONE 29N-W24HZ AWB Ref Wellpath: WISHBONE 29N-W24HZ AWP

String/Diameter	Start MD [ft]	End MD [ft]	Interval [ft]	Start TVD [ft]	End TVD [ft]	Start N/S [ft]	Start E/W [ft]	End N/S [ft]	End E/W [ft]
13.5in Open Hole	17.00	1045.00	1028.00	17.00	1044.99	0.00	0.00	-0.08	2.65
9.625in Casing Surface	17.00	1035.00	1018.00	17.00	1034.99	0.00	0.00	-0.07	2.70
8.75in Open Hole	1045.00	7740.00	6695.00	1044.99	7365.19	-0.08	2.65	341.30	266.45
7in Casing Intermediate	17.00	7724.00	7707.00	17.00	7363.86	0.00	0.00	325.36	266.87
6.125in Open Hole	7724.00	11895.00	4171.00	7363.86	7375.38	325.36	266.87	4494.00	328.32

## TARGETS

Name	MD [ft]	TVD [ft]	North [ft]	East [ft]	Grid East [US ft]	Grid North [US ft]	Latitude	Longitude	Shape
SEC.24 SECTION LINES		22.00	-3.23	-592.70	3214370.72	1286534.33	40°07'02.590"N	104°44'00.532"W	polygon
WISHBONE 29N-W24HZ BHL ON PLAT (460'FNL & 1288'FWL, SEC.24)		7304.00	4519.08	303.63	3215227.78	1291064.04	40°07'47.280"N	104°43'48.994"W	point
WISHBONE 29N-W24HZ BHL ON PLAT (460'FNL & 1288'FWL, SEC.24) REV-2		7365.00	4519.08	303.67	3215227.81	1291064.04	40°07'47.280"N	104°43'48.994"W	point
SEC. 24 HARDLINES (460' SETBACKS)		7622.00	-3.23	-592.70	3214370.72	1286534.33	40°07'02.590"N	104°44'00.532"W	polygon
WISHBONE 29N-W24HZ LAND BOX		11927.00	0.00	0.00	3214963.34	1286542.70	40°07'02.622"N	104°43'52.903"W	polygon

## WELLPATH COMPOSITION - Ref Wellbore: WISHBONE 29N-W24HZ AWB Ref Wellpath: WISHBONE 29N-W24HZ AWP

Start MD [ft]	End MD [ft]	Positional Uncertainty Model	Log Name/Comment	Wellbore
17.00	957.00	Generic gyro - continuous (Standard)	WISHBONE 29N-W24HZ MS WIRELINE GYRO SURVEYS<117-957>	WISHBONE 29N-W24HZ AWB
957.00	7691.00	NaviTrak (MAGCORR,IFR)	BHI MWD+IFR Surveys 8 3/4" HOLE <1069-7691>	WISHBONE 29N-W24HZ AWB
7691.00	11842.00	Unknown Tool (Standard)	BHI MWD+IFR Surveys 6 1/8" HOLE	WISHBONE 29N-W24HZ AWB
11842.00	11895.00	Blind Drilling (std)	Projection to bit	WISHBONE 29N-W24HZ AWB



# Actual Wellpath Report

WISHBONE 29N-W24HZ AWP

Page 6 of 6



REFERENCE WELLPATH IDENTIFICATION			
Operator	KERR-MCGEE OIL & GAS ONSHORE LP	Slot	SLOT#22 WISHBONE 29N-W24HZ (320'FSL & 1010'FWL, SEC.24)
Area	COLORADO	Well	WISHBONE 29N-W24HZ
Field	WELD COUNTY (KERR MCGEE)	Wellbore	WISHBONE 29N-W24HZ AWB
Facility	SEC.24-T2N-R66W		

WELLPATH COMMENTS				
MD [ft]	Inclination [°]	Azimuth [°]	TVD [ft]	Comment
17.00	0.000	102.620	17.00	Tie-On
117.00	0.290	102.620	117.00	Begin GYRO Surveys
957.00	0.240	203.950	956.99	Tie-Into GYRO Surveys
1069.00	0.340	275.280	1068.99	Begin BHI MWD+IFR Surveys
7724.00	84.878	358.366	7363.86	7" Casing Point
11842.00	88.950	3.670	7374.41	Last BHI MWD+IFR Surveys
11895.00	88.950	3.670	7375.38	Projection to Bit