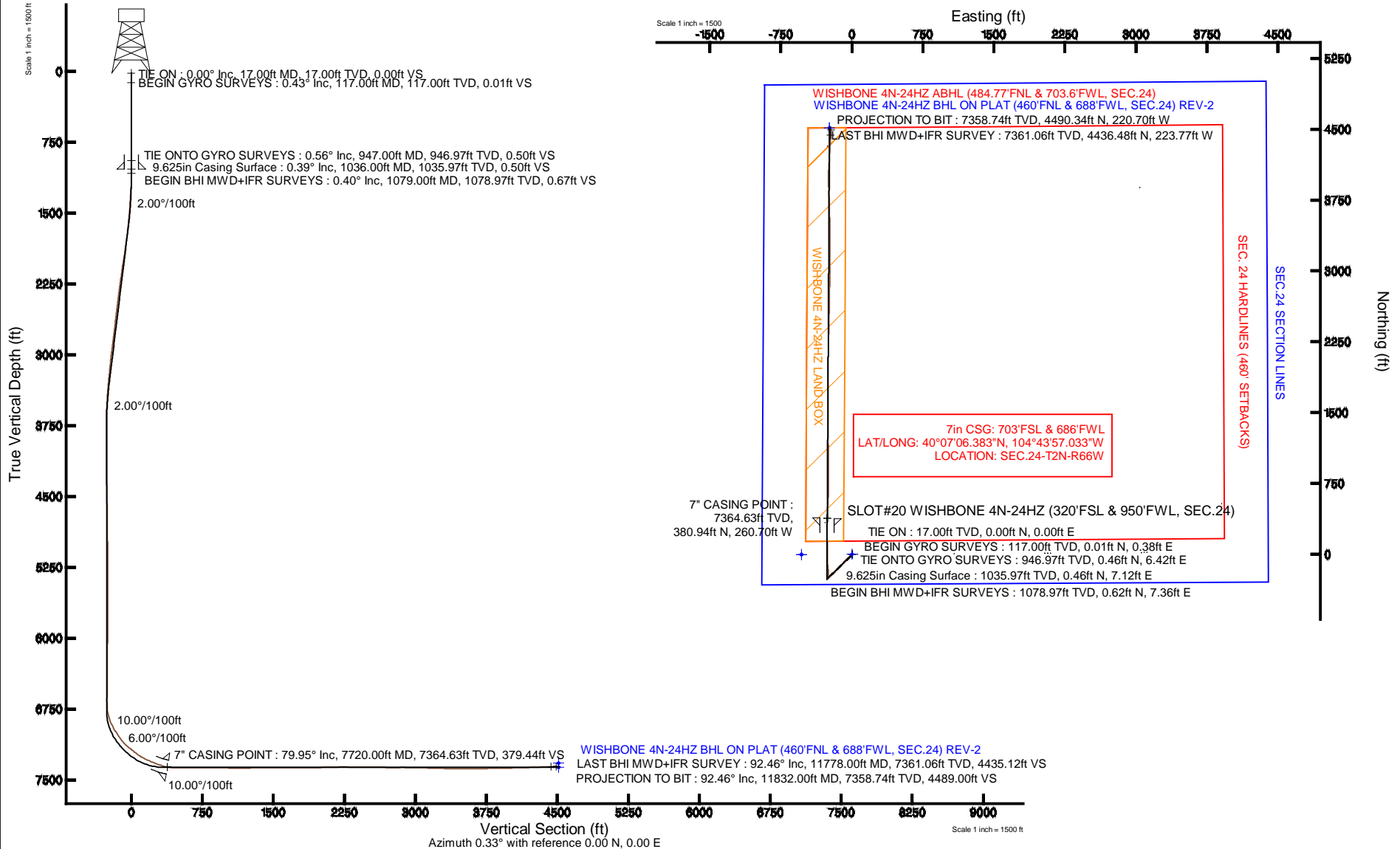


# KERR-MCGEE OIL & GAS ONSHORE LP

Location: COLORADO Slot: SLOT#20 WISHBONE 4N-24HZ (320'FSL & 950'FWL, SEC.24)  
 Field: WELD COUNTY (KERR MCGEE) Well: WISHBONE 4N-24HZ  
 Facility: SEC.24-T2N-R66W Wellbore: WISHBONE 4N-24HZ PWB

Plot reference wellpath is WISHBONE 4N-24HZ (REV-A.0) PWP

True vertical depths are referenced to XTREME 8 (RKB)	Grid System: NAD83 / Lambert Colorado SP, Northern Zone (501), US feet
Measured depths are referenced to XTREME 8 (RKB)	North Reference: True north
XTREME 8 (RKB) to Mean Sea Level: 5099 feet	Scale: True distance
Mean Sea Level to Mud line (At Slot: SLOT#20 WISHBONE 4N-24HZ (320'FSL & 950'FWL, SEC.24)): 0 feet	Depths are in feet
Coordinates are in feet referenced to Slot	Created by: robiale01 on 10/Jul/2013





# Actual Wellpath Report

WISHBONE 4N-24HZ AWP

Page 1 of 6



## REFERENCE WELLPATH IDENTIFICATION

Operator	<b>KERR-MCGEE OIL &amp; GAS ONSHORE LP</b>	Slot	<b>SLOT#20 WISHBONE 4N-24HZ (320'FSL &amp; 950'FWL, SEC.24)</b>
Area	<b>COLORADO</b>	Well	<b>WISHBONE 4N-24HZ</b>
Field	<b>WELD COUNTY (KERR MCGEE)</b>	Wellbore	<b>WISHBONE 4N-24HZ AWB</b>
Facility	<b>SEC.24-T2N-R66W</b>		

## REPORT SETUP INFORMATION

Projection System	<b>NAD83 / Lambert Colorado SP, Northern Zone (501), US feet</b>	Software System	<b>WellArchitect® 4.0.0</b>
North Reference	<b>True</b>	User	<b>Robiale01</b>
Scale	<b>0.99996</b>	Report Generated	<b>10/Jul/2013 at 13:10</b>
Convergence at slot	<b>n/a</b>	Database/Source file	<b>WA_ANADARKO/WISHBONE_4N-24HZ_AWB.xml</b>

## WELLPATH LOCATION

	Local coordinates		Grid coordinates		Geographic coordinates	
	North[ft]	East[ft]	Easting[US ft]	Northing[US ft]	Latitude	Longitude
Slot Location	2.94	532.56	3214903.21	1286541.77	<b>40°07'02.618"N</b>	<b>104°43'53.677"W</b>
Facility Reference Pt			<b>3214370.72</b>	<b>1286534.23</b>	40°07'02.589"N	104°44'00.532"W
Field Reference Pt			<b>3197771.84</b>	<b>1268891.29</b>	40°04'09.600"N	104°47'36.000"W

## WELLPATH DATUM

Calculation method	<b>Minimum curvature</b>	XTREME 8 (RKB) to Facility Vertical Datum	<b>5099.00ft</b>
Horizontal Reference Pt	<b>Slot</b>	XTREME 8 (RKB) to Mean Sea Level	<b>5099.00ft</b>
Vertical Reference Pt	<b>XTREME 8 (RKB)</b>	XTREME 8 (RKB) to Mud Line at Slot (SLOT#20 WISHBONE 4N-24HZ (320'FSL & 950'FWL, SEC.24))	<b>5099.00ft</b>
MD Reference Pt	<b>XTREME 8 (RKB)</b>	Section Origin	<b>N 0.00, E 0.00 ft</b>
Field Vertical Reference	<b>Mean Sea Level</b>	Section Azimuth	<b>0.33°</b>



# Actual Wellpath Report

WISHBONE 4N-24HZ AWP

Page 2 of 6



REFERENCE WELLPATH IDENTIFICATION			
Operator	KERR-MCGEE OIL & GAS ONSHORE LP	Slot	SLOT#20 WISHBONE 4N-24HZ (320'FSL & 950'FWL, SEC.24)
Area	COLORADO	Well	WISHBONE 4N-24HZ
Field	WELD COUNTY (KERR MCGEE)	Wellbore	WISHBONE 4N-24HZ AWB
Facility	SEC.24-T2N-R66W		

WELLPATH DATA (123 stations) † = interpolated/extrapolated station										
MD [ft]	Inclination [°]	Azimuth [°]	TVD [ft]	Vert Sect [ft]	North [ft]	East [ft]	Latitude	Longitude	DLS [°/100ft]	Comments
0.00†	0.000	89.200	0.00	0.00	0.00	0.00	40°07'02.618"N	104°43'53.677"W	0.00	
17.00	0.000	89.200	17.00	0.00	0.00	0.00	40°07'02.618"N	104°43'53.677"W	0.00	TIE ON
117.00	0.430	89.200	117.00	0.01	0.01	0.38	40°07'02.618"N	104°43'53.672"W	0.43	BEGIN GYRO SURVEYS
217.00	0.150	78.820	217.00	0.04	0.04	0.88	40°07'02.618"N	104°43'53.666"W	0.28	
317.00	0.470	66.140	317.00	0.24	0.23	1.38	40°07'02.620"N	104°43'53.659"W	0.33	
417.00	0.260	70.250	416.99	0.48	0.47	1.97	40°07'02.623"N	104°43'53.652"W	0.21	
517.00	0.480	68.250	516.99	0.72	0.70	2.57	40°07'02.625"N	104°43'53.644"W	0.22	
617.00	0.570	96.980	616.99	0.82	0.80	3.46	40°07'02.626"N	104°43'53.633"W	0.27	
717.00	0.550	92.230	716.98	0.74	0.72	4.43	40°07'02.625"N	104°43'53.620"W	0.05	
817.00	0.430	82.510	816.98	0.78	0.75	5.28	40°07'02.625"N	104°43'53.609"W	0.15	
917.00	0.610	115.320	916.98	0.60	0.57	6.13	40°07'02.624"N	104°43'53.598"W	0.34	
947.00	0.560	105.570	946.97	0.50	0.46	6.42	40°07'02.623"N	104°43'53.594"W	0.37	TIE ONTO GYRO SURVEYS
1079.00	0.400	43.180	1078.97	0.67	0.62	7.36	40°07'02.624"N	104°43'53.582"W	0.39	BEGIN BHI MWD+IFR SURVEYS
1140.00	1.230	243.990	1139.97	0.53	0.49	6.91	40°07'02.623"N	104°43'53.588"W	2.64	
1231.00	5.280	228.960	1230.80	-2.67	-2.69	2.88	40°07'02.591"N	104°43'53.640"W	4.51	
1321.00	5.980	234.570	1320.37	-8.15	-8.12	-4.07	40°07'02.538"N	104°43'53.729"W	0.99	
1412.00	5.610	232.800	1410.90	-13.63	-13.56	-11.47	40°07'02.484"N	104°43'53.825"W	0.45	
1502.00	7.050	222.320	1500.35	-20.41	-20.30	-18.70	40°07'02.417"N	104°43'53.918"W	2.05	
1593.00	8.440	227.720	1590.52	-29.08	-28.93	-27.40	40°07'02.332"N	104°43'54.030"W	1.72	
1684.00	9.420	235.160	1680.42	-37.90	-37.67	-38.45	40°07'02.246"N	104°43'54.172"W	1.66	
1774.00	11.200	226.970	1768.97	-48.14	-47.85	-50.89	40°07'02.145"N	104°43'54.332"W	2.56	
1866.00	11.740	225.730	1859.13	-60.85	-60.48	-64.12	40°07'02.020"N	104°43'54.502"W	0.65	
1957.00	11.200	220.540	1948.32	-74.10	-73.66	-76.49	40°07'01.890"N	104°43'54.662"W	1.28	
2048.00	11.260	215.840	2037.58	-88.08	-87.58	-87.44	40°07'01.753"N	104°43'54.803"W	1.01	
2133.00	10.830	223.730	2121.01	-100.63	-100.07	-97.82	40°07'01.629"N	104°43'54.936"W	1.85	
2218.00	10.410	222.820	2204.55	-112.10	-111.48	-108.56	40°07'01.516"N	104°43'55.074"W	0.53	
2304.00	10.220	223.040	2289.16	-123.43	-122.75	-119.05	40°07'01.405"N	104°43'55.209"W	0.23	
2389.00	10.090	222.130	2372.83	-134.53	-133.79	-129.19	40°07'01.296"N	104°43'55.340"W	0.24	
2474.00	9.500	221.430	2456.59	-145.36	-144.57	-138.83	40°07'01.189"N	104°43'55.464"W	0.71	
2559.00	8.800	219.360	2540.51	-155.70	-154.85	-147.59	40°07'01.088"N	104°43'55.577"W	0.91	
2644.00	9.180	225.520	2624.47	-165.53	-164.63	-156.55	40°07'00.991"N	104°43'55.692"W	1.22	
2730.00	10.030	227.730	2709.26	-175.43	-174.48	-166.99	40°07'00.894"N	104°43'55.826"W	1.08	
2815.00	9.260	226.040	2793.06	-185.22	-184.20	-177.39	40°07'00.798"N	104°43'55.960"W	0.97	
2900.00	10.410	224.190	2876.81	-195.53	-194.46	-187.67	40°07'00.696"N	104°43'56.093"W	1.40	
2985.00	9.890	223.270	2960.48	-206.41	-205.28	-198.02	40°07'00.589"N	104°43'56.226"W	0.64	
3071.00	9.790	231.440	3045.22	-216.41	-215.21	-208.80	40°07'00.491"N	104°43'56.365"W	1.63	
3156.00	9.330	231.360	3129.04	-225.28	-224.02	-219.83	40°07'00.404"N	104°43'56.507"W	0.54	
3241.00	8.850	232.370	3212.97	-233.63	-232.32	-230.40	40°07'00.322"N	104°43'56.643"W	0.60	
3326.00	8.130	232.340	3297.04	-241.36	-239.98	-240.33	40°07'00.246"N	104°43'56.770"W	0.85	
3412.00	6.680	226.510	3382.32	-248.56	-247.14	-248.78	40°07'00.176"N	104°43'56.879"W	1.90	
3497.00	6.030	226.730	3466.79	-255.06	-253.60	-255.61	40°07'00.112"N	104°43'56.967"W	0.77	
3582.00	4.170	223.480	3551.45	-260.40	-258.90	-260.99	40°07'00.059"N	104°43'57.036"W	2.21	
3667.00	2.020	226.740	3636.33	-263.69	-262.17	-264.21	40°07'00.027"N	104°43'57.078"W	2.54	
3753.00	1.290	238.110	3722.29	-265.25	-263.72	-266.13	40°07'00.012"N	104°43'57.103"W	0.93	
3838.00	0.840	252.770	3807.27	-265.95	-264.41	-267.54	40°07'00.005"N	104°43'57.121"W	0.61	



# Actual Wellpath Report

WISHBONE 4N-24HZ AWP

Page 3 of 6



REFERENCE WELLPATH IDENTIFICATION			
Operator	KERR-MCGEE OIL & GAS ONSHORE LP	Slot	SLOT#20 WISHBONE 4N-24HZ (320'FSL & 950'FWL, SEC.24)
Area	COLORADO	Well	WISHBONE 4N-24HZ
Field	WELD COUNTY (KERR MCGEE)	Wellbore	WISHBONE 4N-24HZ AWB
Facility	SEC.24-T2N-R66W		

WELLPATH DATA (123 stations) † = interpolated/extrapolated station										
MD [ft]	Inclination [°]	Azimuth [°]	TVD [ft]	Vert Sect [ft]	North [ft]	East [ft]	Latitude	Longitude	DLS [°/100ft]	Comments
3923.00	0.710	269.800	3892.27	-266.14	-264.60	-268.66	40°07'00.003"N	104°43'57.135"W	0.31	
4009.00	0.740	91.310	3978.26	-266.15	-264.61	-268.64	40°07'00.003"N	104°43'57.135"W	1.69	
4350.00	1.330	28.680	4319.22	-262.71	-261.19	-264.54	40°07'00.037"N	104°43'57.082"W	0.35	
4691.00	1.910	23.480	4660.08	-254.00	-252.51	-260.38	40°07'00.123"N	104°43'57.028"W	0.18	
4776.00	0.740	76.610	4745.06	-252.57	-251.08	-259.28	40°07'00.137"N	104°43'57.014"W	1.86	
5117.00	1.020	289.240	5086.04	-251.06	-249.57	-260.00	40°07'00.152"N	104°43'57.024"W	0.50	
5459.00	0.650	7.080	5428.01	-248.15	-246.64	-262.64	40°07'00.181"N	104°43'57.058"W	0.32	
5800.00	0.690	135.610	5769.00	-247.69	-246.19	-260.96	40°07'00.185"N	104°43'57.036"W	0.35	
6141.00	1.450	141.150	6109.94	-252.49	-251.02	-256.82	40°07'00.137"N	104°43'56.983"W	0.22	
6226.00	1.230	185.150	6194.92	-254.23	-252.77	-256.23	40°07'00.120"N	104°43'56.975"W	1.21	
6311.00	0.170	178.610	6279.91	-255.27	-253.80	-256.31	40°07'00.110"N	104°43'56.976"W	1.25	
6652.00	0.680	113.250	6620.90	-256.56	-255.10	-254.43	40°07'00.097"N	104°43'56.952"W	0.18	
6738.00	0.490	46.270	6706.90	-256.50	-255.05	-253.70	40°07'00.098"N	104°43'56.943"W	0.77	
6780.00	5.000	8.100	6748.84	-254.57	-253.11	-253.31	40°07'00.117"N	104°43'56.938"W	11.01	
6823.00	10.150	7.560	6791.45	-248.95	-247.50	-252.55	40°07'00.172"N	104°43'56.928"W	11.98	
6866.00	16.090	7.080	6833.31	-239.26	-237.82	-251.31	40°07'00.268"N	104°43'56.912"W	13.82	
6908.00	21.620	4.850	6873.04	-225.76	-224.33	-249.94	40°07'00.401"N	104°43'56.894"W	13.28	
6951.00	25.980	3.610	6912.38	-208.45	-207.02	-248.68	40°07'00.572"N	104°43'56.878"W	10.21	
6994.00	29.580	359.690	6950.42	-188.43	-187.00	-248.14	40°07'00.770"N	104°43'56.871"W	9.38	
7036.00	32.120	354.610	6986.48	-166.94	-165.51	-249.25	40°07'00.982"N	104°43'56.885"W	8.66	
7079.00	32.210	352.450	7022.88	-144.22	-142.77	-251.83	40°07'01.207"N	104°43'56.918"W	2.68	
7122.00	36.220	353.250	7058.43	-120.25	-118.79	-254.83	40°07'01.444"N	104°43'56.957"W	9.38	
7164.00	40.550	355.400	7091.35	-94.32	-92.84	-257.38	40°07'01.701"N	104°43'56.990"W	10.79	
7207.00	45.680	359.280	7122.73	-64.99	-63.50	-258.70	40°07'01.990"N	104°43'57.007"W	13.43	
7249.00	49.330	0.530	7151.10	-34.03	-32.54	-258.74	40°07'02.296"N	104°43'57.007"W	8.96	
7292.00	50.870	0.900	7178.68	-1.04	0.44	-258.33	40°07'02.622"N	104°43'57.002"W	3.64	
7335.00	51.410	0.350	7205.66	32.44	33.92	-257.96	40°07'02.953"N	104°43'56.997"W	1.60	
7377.00	54.550	359.960	7230.94	65.97	67.45	-257.87	40°07'03.285"N	104°43'56.996"W	7.51	
7420.00	58.060	357.940	7254.80	101.73	103.22	-258.54	40°07'03.638"N	104°43'57.005"W	9.05	
7463.00	62.510	357.060	7276.11	139.02	140.52	-260.18	40°07'04.007"N	104°43'57.026"W	10.50	
7505.00	65.920	358.450	7294.37	176.79	178.30	-261.65	40°07'04.380"N	104°43'57.045"W	8.65	
7548.00	67.960	359.750	7311.22	216.34	217.85	-262.27	40°07'04.771"N	104°43'57.053"W	5.50	
7591.00	67.860	359.910	7327.39	256.19	257.70	-262.39	40°07'05.165"N	104°43'57.054"W	0.42	
7633.00	70.970	0.420	7342.15	295.50	297.01	-262.27	40°07'05.553"N	104°43'57.053"W	7.49	
7676.00	74.520	0.700	7354.91	336.56	338.07	-261.87	40°07'05.959"N	104°43'57.048"W	8.28	
7719.00	79.810	2.360	7364.45	378.46	379.96	-260.74	40°07'06.373"N	104°43'57.033"W	12.86	
7720.00†	79.952	2.374	7364.63	379.44	380.94	-260.70	40°07'06.383"N	104°43'57.033"W	14.28	7" CASING POINT
7769.00	86.920	3.030	7370.23	428.05	429.54	-258.41	40°07'06.863"N	104°43'57.003"W	14.28	
7819.00	89.440	2.700	7371.82	477.97	479.45	-255.91	40°07'07.356"N	104°43'56.971"W	5.08	
7947.00	89.440	2.770	7373.07	605.85	607.29	-249.80	40°07'08.619"N	104°43'56.892"W	0.05	
8032.00	89.690	0.870	7373.71	690.82	692.25	-247.10	40°07'09.459"N	104°43'56.858"W	2.25	
8118.00	89.960	359.940	7373.97	776.81	778.24	-246.50	40°07'10.309"N	104°43'56.850"W	1.13	
8288.00	89.750	359.700	7374.41	946.81	948.24	-247.03	40°07'11.989"N	104°43'56.857"W	0.19	
8459.00	89.810	358.810	7375.06	1117.77	1119.22	-249.25	40°07'13.678"N	104°43'56.885"W	0.52	
8629.00	90.620	359.520	7374.42	1287.73	1289.20	-251.73	40°07'15.358"N	104°43'56.917"W	0.63	



# Actual Wellpath Report

WISHBONE 4N-24HZ AWP

Page 4 of 6



## REFERENCE WELLPATH IDENTIFICATION

Operator	KERR-MCGEE OIL & GAS ONSHORE LP	Slot	SLOT#20 WISHBONE 4N-24HZ (320'FSL & 950'FWL, SEC.24)
Area	COLORADO	Well	WISHBONE 4N-24HZ
Field	WELD COUNTY (KERR MCGEE)	Wellbore	WISHBONE 4N-24HZ AWP
Facility	SEC.24-T2N-R66W		

## WELLPATH DATA (123 stations)

MD [ft]	Inclination [°]	Azimuth [°]	TVD [ft]	Vert Sect [ft]	North [ft]	East [ft]	Latitude	Longitude	DLS [°/100ft]	Comments
8800.00	90.580	0.070	7372.63	1458.72	1460.19	-252.34	40°07'17.048"N	104°43'56.925"W	0.32	
8970.00	89.410	359.460	7372.65	1628.70	1630.18	-253.04	40°07'18.728"N	104°43'56.934"W	0.78	
9141.00	90.150	0.120	7373.30	1799.69	1801.18	-253.67	40°07'20.417"N	104°43'56.942"W	0.58	
9311.00	91.690	1.030	7370.58	1969.66	1971.14	-251.96	40°07'22.097"N	104°43'56.920"W	1.05	
9397.00	91.970	0.760	7367.83	2055.62	2057.09	-250.62	40°07'22.946"N	104°43'56.903"W	0.45	
9482.00	91.240	1.210	7365.45	2140.58	2142.04	-249.16	40°07'23.786"N	104°43'56.884"W	1.01	
9567.00	89.970	1.340	7364.55	2225.56	2227.01	-247.27	40°07'24.626"N	104°43'56.860"W	1.50	
9652.00	89.690	1.170	7364.80	2310.55	2311.99	-245.41	40°07'25.465"N	104°43'56.836"W	0.39	
9738.00	90.180	1.330	7364.90	2396.53	2397.97	-243.53	40°07'26.315"N	104°43'56.812"W	0.60	
9823.00	88.830	1.180	7365.63	2481.52	2482.95	-241.67	40°07'27.155"N	104°43'56.788"W	1.60	
9908.00	88.520	1.380	7367.60	2566.48	2567.90	-239.77	40°07'27.994"N	104°43'56.764"W	0.43	
9994.00	89.140	0.840	7369.36	2652.46	2653.87	-238.10	40°07'28.844"N	104°43'56.742"W	0.96	
10079.00	89.530	0.530	7370.34	2737.45	2738.86	-237.09	40°07'29.684"N	104°43'56.729"W	0.59	
10164.00	91.010	1.870	7369.94	2822.43	2823.83	-235.31	40°07'30.523"N	104°43'56.706"W	2.35	
10249.00	89.010	0.230	7369.93	2907.42	2908.81	-233.75	40°07'31.363"N	104°43'56.686"W	3.04	
10335.00	88.940	1.250	7371.47	2993.40	2994.79	-232.64	40°07'32.213"N	104°43'56.672"W	1.19	
10420.00	88.440	359.780	7373.41	3078.38	3079.76	-231.88	40°07'33.053"N	104°43'56.662"W	1.83	
10505.00	88.300	359.960	7375.83	3163.34	3164.73	-232.07	40°07'33.892"N	104°43'56.665"W	0.27	
10590.00	88.360	0.560	7378.30	3248.30	3249.69	-231.68	40°07'34.732"N	104°43'56.660"W	0.71	
10676.00	88.950	359.470	7380.32	3334.28	3335.66	-231.66	40°07'35.581"N	104°43'56.659"W	1.44	
10761.00	89.620	359.160	7381.38	3419.26	3420.65	-232.68	40°07'36.421"N	104°43'56.672"W	0.87	
10846.00	90.360	359.000	7381.40	3504.24	3505.64	-234.04	40°07'37.261"N	104°43'56.690"W	0.89	
10931.00	90.180	359.170	7381.00	3589.22	3590.63	-235.40	40°07'38.101"N	104°43'56.707"W	0.29	
11016.00	90.530	358.900	7380.47	3674.19	3675.61	-236.83	40°07'38.941"N	104°43'56.726"W	0.52	
11187.00	90.250	356.880	7379.31	3845.02	3846.48	-243.13	40°07'40.629"N	104°43'56.807"W	1.19	
11272.00	92.120	358.690	7377.55	3929.91	3931.39	-246.41	40°07'41.468"N	104°43'56.849"W	3.06	
11357.00	91.200	1.240	7375.09	4014.87	4016.35	-246.46	40°07'42.308"N	104°43'56.850"W	3.19	
11443.00	91.540	3.310	7373.03	4100.79	4102.25	-243.05	40°07'43.157"N	104°43'56.806"W	2.44	
11528.00	92.250	3.200	7370.22	4185.63	4187.07	-238.23	40°07'43.995"N	104°43'56.744"W	0.85	
11613.00	92.160	3.180	7366.95	4270.46	4271.87	-233.50	40°07'44.833"N	104°43'56.683"W	0.11	
11699.00	91.790	3.540	7363.99	4356.29	4357.68	-228.46	40°07'45.681"N	104°43'56.618"W	0.60	
11778.00	92.460	3.270	7361.06	4435.12	4436.48	-223.77	40°07'46.460"N	104°43'56.558"W	0.91	LAST BHI MWD+IFR SURVEY
11832.00	92.460	3.270	7358.74	4489.00	4490.34	-220.70	40°07'46.992"N	104°43'56.518"W	0.00	PROJECTION TO BIT



# Actual Wellpath Report

WISHBONE 4N-24HZ AWP

Page 5 of 6



## REFERENCE WELLPATH IDENTIFICATION

Operator	KERR-MCGEE OIL & GAS ONSHORE LP	Slot	SLOT#20 WISHBONE 4N-24HZ (320'FSL & 950'FWL, SEC.24)
Area	COLORADO	Well	WISHBONE 4N-24HZ
Field	WELD COUNTY (KERR MCGEE)	Wellbore	WISHBONE 4N-24HZ AWB
Facility	SEC.24-T2N-R66W		

## HOLE & CASING SECTIONS - Ref Wellbore: WISHBONE 4N-24HZ AWB Ref Wellpath: WISHBONE 4N-24HZ AWP

String/Diameter	Start MD [ft]	End MD [ft]	Interval [ft]	Start TVD [ft]	End TVD [ft]	Start N/S [ft]	Start E/W [ft]	End N/S [ft]	End E/W [ft]
13.5in Open Hole	17.00	1046.00	1029.00	17.00	1045.97	0.00	0.00	0.49	7.18
9.625in Casing Surface	17.00	1036.00	1019.00	17.00	1035.97	0.00	0.00	0.46	7.12
8.75in Open Hole	1046.00	7817.00	6771.00	1045.97	7371.79	0.49	7.18	477.45	-256.01
7in Casing Intermediate	17.00	7720.00	7703.00	17.00	7364.63	0.00	0.00	380.94	-260.70
6.125in Open Hole	7817.00	11832.00	4015.00	7371.79	7358.74	477.45	-256.01	4490.34	-220.70

## TARGETS

Name	MD [ft]	TVD [ft]	North [ft]	East [ft]	Grid East [US ft]	Grid North [US ft]	Latitude	Longitude	Shape
SEC.24 SECTION LINES		22.00	-2.83	-532.56	3214370.72	1286534.33	40°07'02.590"N	104°44'00.532"W	polygon
WISHBONE 4N-24HZ LAND BOX		5099.00	0.00	0.00	3214903.21	1286541.77	40°07'02.618"N	104°43'53.677"W	polygon
WISHBONE 4N-24HZ BHL ON PLAT (460'FNL & 688'FWL, SEC.24)		7324.00	4515.13	-236.29	3214627.82	1291054.49	40°07'47.237"N	104°43'56.719"W	point
WISHBONE 4N-24HZ BHL ON PLAT (460'FNL & 688'FWL, SEC.24) REV-2		7369.00	4515.11	-236.30	3214627.80	1291054.47	40°07'47.237"N	104°43'56.719"W	point
SEC. 24 HARDLINES (460' SETBACKS)		7622.00	-2.83	-532.56	3214370.72	1286534.33	40°07'02.590"N	104°44'00.532"W	polygon

## WELLPATH COMPOSITION - Ref Wellbore: WISHBONE 4N-24HZ AWB Ref Wellpath: WISHBONE 4N-24HZ AWP

Start MD [ft]	End MD [ft]	Positional Uncertainty Model	Log Name/Comment	Wellbore
17.00	947.00	Generic gyro - continuous (Standard)	MS WIRELINE GYRO SURVEYS <117-947>	WISHBONE 4N-24HZ AWB
947.00	7769.00	NaviTrak (MAGCORR,IFR)	BHI MWD + IFR SURVEYS 8 3/4" HOLE <1079-7817>	WISHBONE 4N-24HZ AWB
7769.00	11778.00	OnTrak (MAGCORR,IFR)	BHI MWD+IFR SURVEYS 6 1/8" HOLE <7819-11778>	WISHBONE 4N-24HZ AWB
11778.00	11832.00	Blind Drilling (std)	Projection to bit	WISHBONE 4N-24HZ AWB



# Actual Wellpath Report

WISHBONE 4N-24HZ AWP

Page 6 of 6



## REFERENCE WELLPATH IDENTIFICATION

Operator	KERR-MCGEE OIL & GAS ONSHORE LP	Slot	SLOT#20 WISHBONE 4N-24HZ (320'FSL & 950'FWL, SEC.24)
Area	COLORADO	Well	WISHBONE 4N-24HZ
Field	WELD COUNTY (KERR MCGEE)	Wellbore	WISHBONE 4N-24HZ AWB
Facility	SEC.24-T2N-R66W		

## WELLPATH COMMENTS

MD [ft]	Inclination [°]	Azimuth [°]	TVD [ft]	Comment
17.00	0.000	89.200	17.00	TIE ON
117.00	0.430	89.200	117.00	BEGIN GYRO SURVEYS
947.00	0.560	105.570	946.97	TIE ONTO GYRO SURVEYS
1079.00	0.400	43.180	1078.97	BEGIN BHI MWD+IFR SURVEYS
7720.00	79.952	2.374	7364.63	7" CASING POINT
11778.00	92.460	3.270	7361.06	LAST BHI MWD+IFR SURVEY
11832.00	92.460	3.270	7358.74	PROJECTION TO BIT