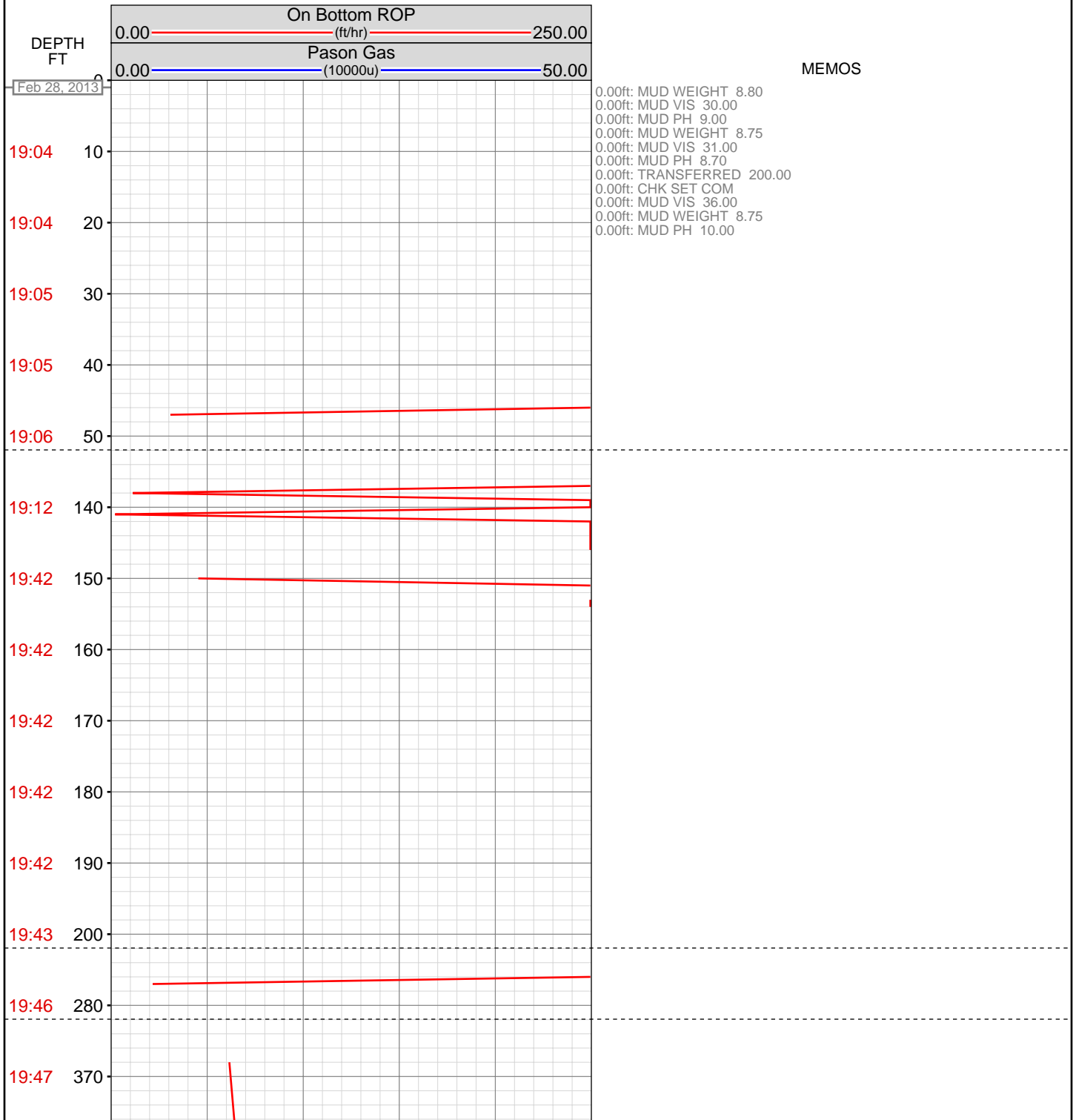


# DataHub EDR Log

Tue Mar 05, 2013 09:09:45  
Well Dossier 1362041231  
Greg Veregin

**OPERATOR:** EnCana Oil & Gas (USA), Inc.  
**WELL:** SHIDELER 19-14D  
**FIELD:**  
**LOCATION:** SEC19 TWN T7S RNG 92W  
**COUNTRY:** USA  
**RIG:** Pat-UTI 308

**CONTRACTOR:** Patterson-UTI Drilling Company  
**UNIQUE WELL ID:** 05-045-21832  
**SPUD DATE:**  
**RELEASE DATE:**



19:49 460

19:49 550

21:39 600

21:39 610

21:39 680

21:41 770

21:42 860

23:39 870

23:39 880

23:41 890

23:41 900

23:41 910

23:43 920

23:43 930

23:43 940

23:43 950

23:47 1000

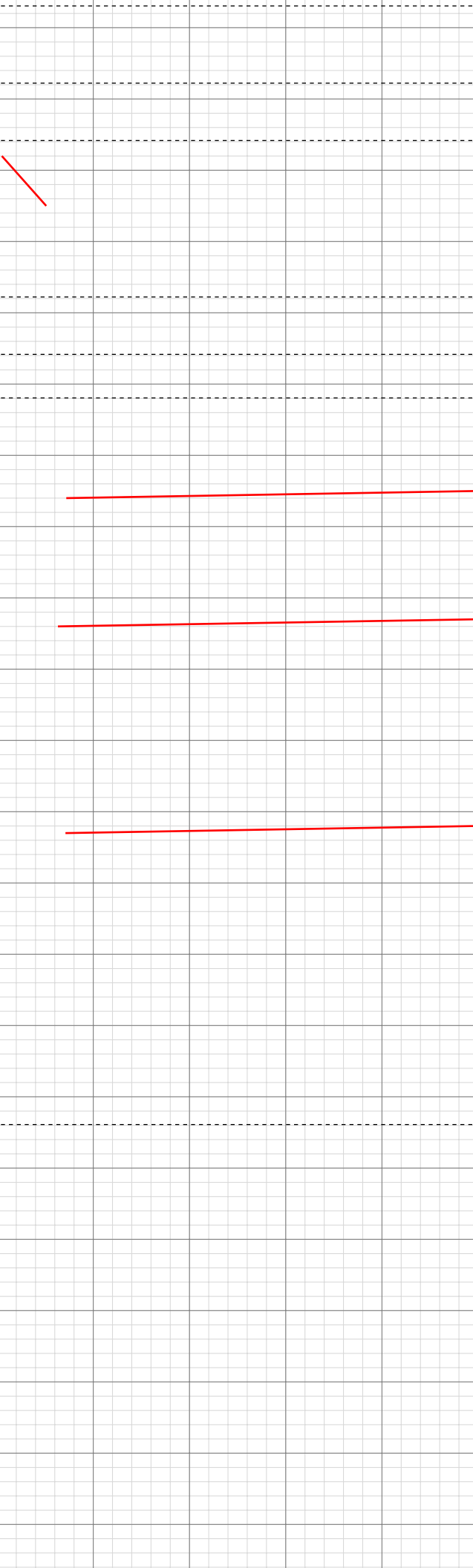
23:47 1010

23:47 1020

23:47 1030

23:47 1040

23:50 1050



23:50 1060

23:50 1070

23:50 1080

Mar 01, 2013

1089.09ft: MUD WEIGHT 8.65  
1089.09ft: MUD VIS 35.00  
1089.09ft: MUD PH 9.30  
1089.09ft: MUD WEIGHT 8.70  
1089.09ft: MUD VIS 35.00  
1089.09ft: MUD PH 9.50

03:02 1100

03:02 1110

03:02 1120

03:02 1130

03:02 1140

03:04 1150

03:06 1290

1294.61ft: INSTALL ROT HEAD

03:06 1300

03:06 1310

03:06 1320

03:08 1330

03:10 1420

03:10 1430

03:10 1440

03:10 1450

03:10 1460

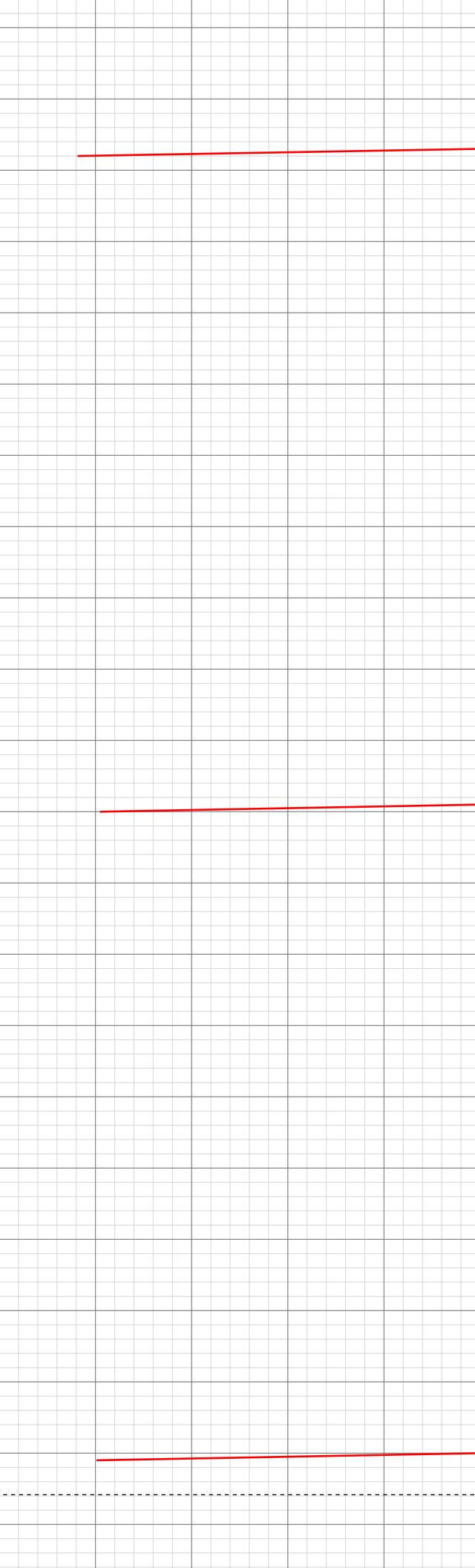
1458.28ft: FILL PIPE  
1458.28ft: ZWOB from SideKick sk-06-03-2616  
1458.28ft: ZDiffPressure from SideKick sk-06-03-2616

03:10 1470

03:10 1480

1479.29ft: IN TALLY: HOLE DEPTH SET TO 1480.9  
1480.89ft: Connection at 1480.9

03:10 1490  
03:10 1500  
03:12 1510  
03:12 1520  
03:12 1530  
03:12 1540  
03:12 1550  
03:12 1560  
03:12 1570  
03:12 1580  
03:12 1590  
03:14 1600  
03:14 1610  
03:14 1620  
03:14 1630  
03:14 1640  
03:14 1650  
03:14 1660  
03:14 1670  
03:14 1680  
03:14 1690  
03:16 1750



1536.00ft: PVT:Volume alarm reactivated: un-muted

1572.67ft: Connection at 1572.3  
1572.67ft: ZDiffPressure from SideKick sk-06-03-2616  
1572.67ft: ZDiffPressure from SideKick sk-06-03-2616  
1572.67ft: ZWOB from SideKick sk-06-03-2616

1612.81ft: ZDiffPressure from SideKick sk-06-03-2616

1638.00ft: MUD WEIGHT 8.75  
1638.43ft: MUD VIS 33.00  
1639.00ft: MUD PH 11.10

1663.94ft: BOP DRILL  
1663.94ft: SURVEY @ 1613' INC 7.0 AZ 233.1  
1663.94ft: Connection at 1663.7

1686.75ft: ROTATING

1751.00ft: MUD VIS 34.00  
1751.31ft: MUD WEIGHT 8.75  
1751.31ft: MUD PH 11.30  
1755.57ft: SURVEY @ 1705 INC 8.7 AZI 244.9

1755.57ft: ZWOB from SideKick sk-06-03-2616  
1755.57ft: ZDiffPressure from SideKick sk-06-03-2616  
1755.57ft: Connection at 1755.1

1847.04ft: Connection at 1846.4  
1847.04ft: ZDiffPressure from SideKick sk-06-03-2616  
1847.04ft: ZWOB from SideKick sk-06-03-2616

1873.09ft: INSTALLED X/O

1879.50ft: IN TALLY: HOLE DEPTH SET TO 1023.0

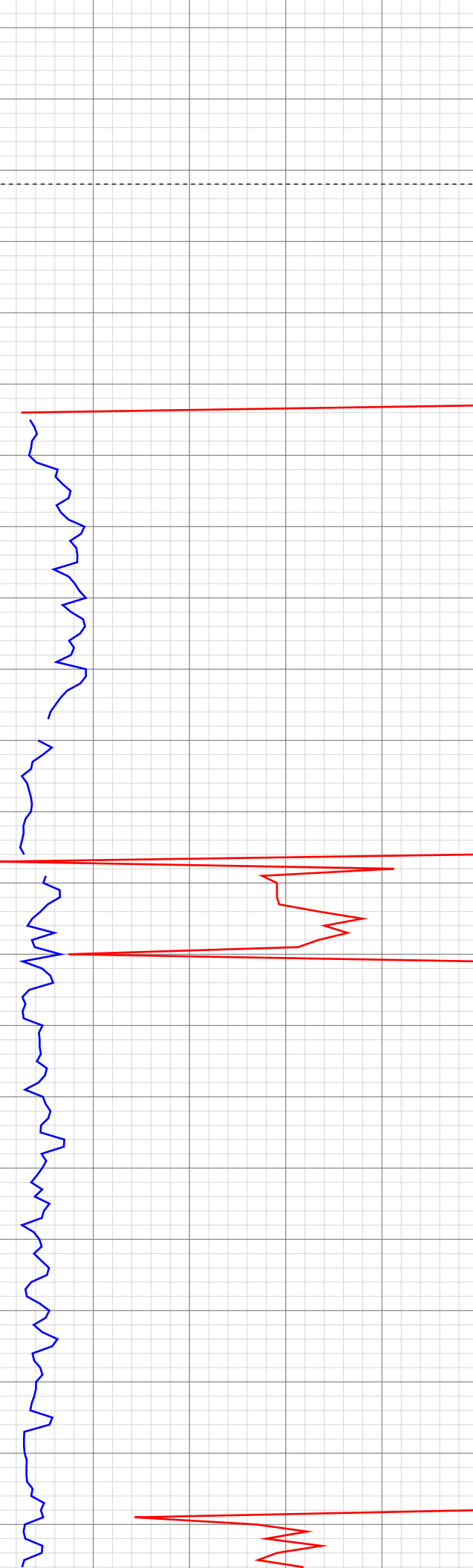
1893.27ft: SURVEY @ 1796' INC 8.8 AZ 246.9

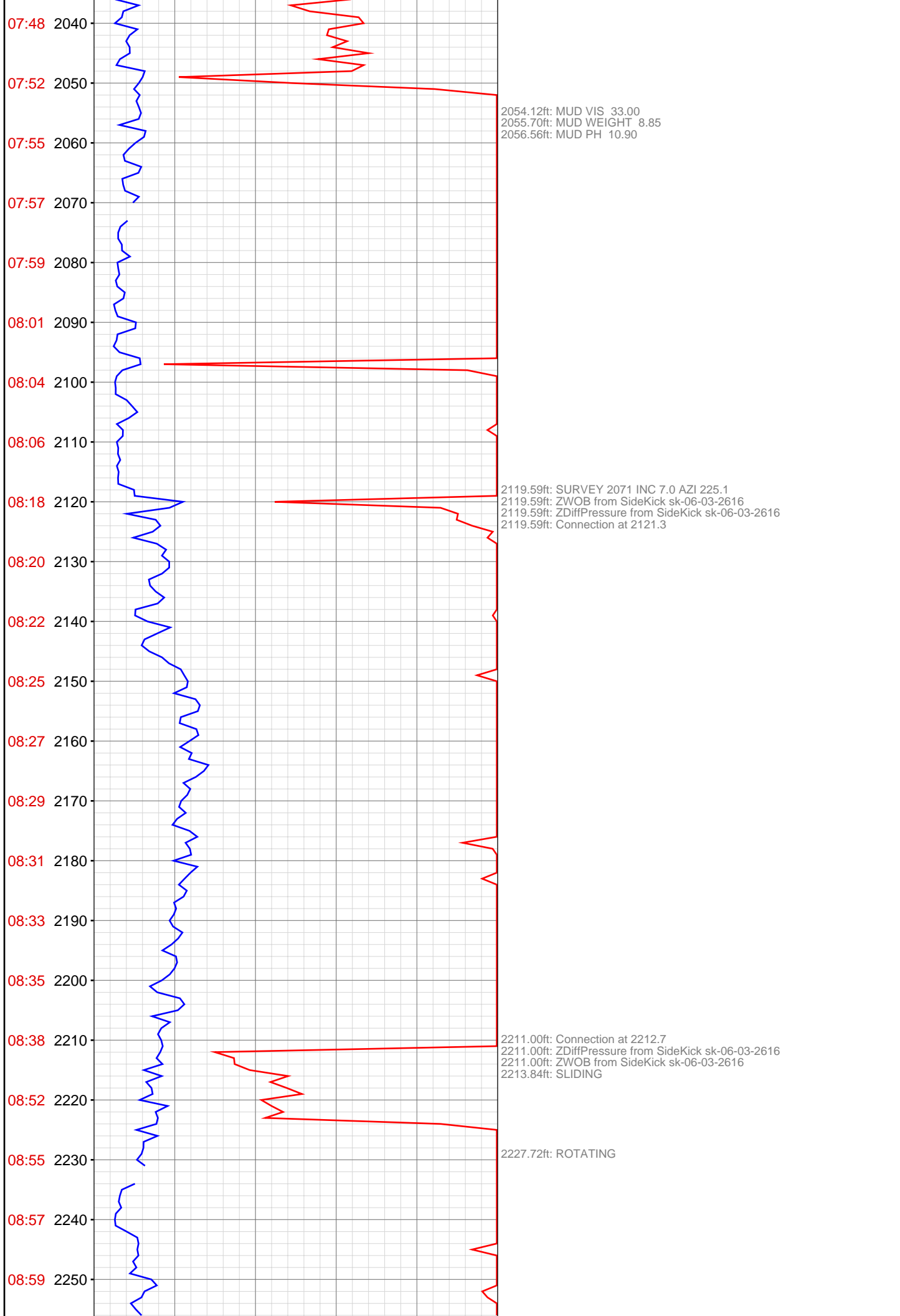
1937.00ft: IN TALLY: HOLE DEPTH SET TO 1938.0

1938.33ft: MUD VIS 34.00  
1938.33ft: MUD WEIGHT 8.80  
1938.33ft: MUD PH 10.70  
1938.33ft: SURVEY @ 1887' INC 9.6 AZ 239.1  
1938.33ft: Connection at 1938.0  
1938.33ft: ZDiffPressure from SideKick sk-06-03-2616

2028.16ft: SURVEY @ 1979 INC 8.9 AZI 233.1  
2028.16ft: ZDiffPressure from SideKick sk-06-03-2616  
2028.16ft: ZWOB from SideKick sk-06-03-2616  
2028.16ft: Connection at 2029.7

03:16 1760  
03:16 1770  
03:16 1780  
03:18 1850  
03:18 1860  
03:18 1870  
06:51 1880  
06:53 1890  
06:55 1900  
06:57 1910  
06:59 1920  
07:01 1930  
07:13 1940  
07:18 1950  
07:20 1960  
07:22 1970  
07:24 1980  
07:26 1990  
07:28 2000  
07:30 2010  
07:32 2020  
07:43 2030





09:02 2260  
09:04 2270  
09:06 2280  
09:08 2290  
09:10 2300  
09:22 2310  
09:25 2320  
09:27 2330  
09:29 2340  
09:31 2350  
09:34 2360  
09:36 2370  
09:38 2380  
09:41 2390  
09:55 2400  
10:01 2410  
10:02 2420  
10:04 2430  
10:06 2440  
10:08 2450  
10:10 2460  
10:12 2470



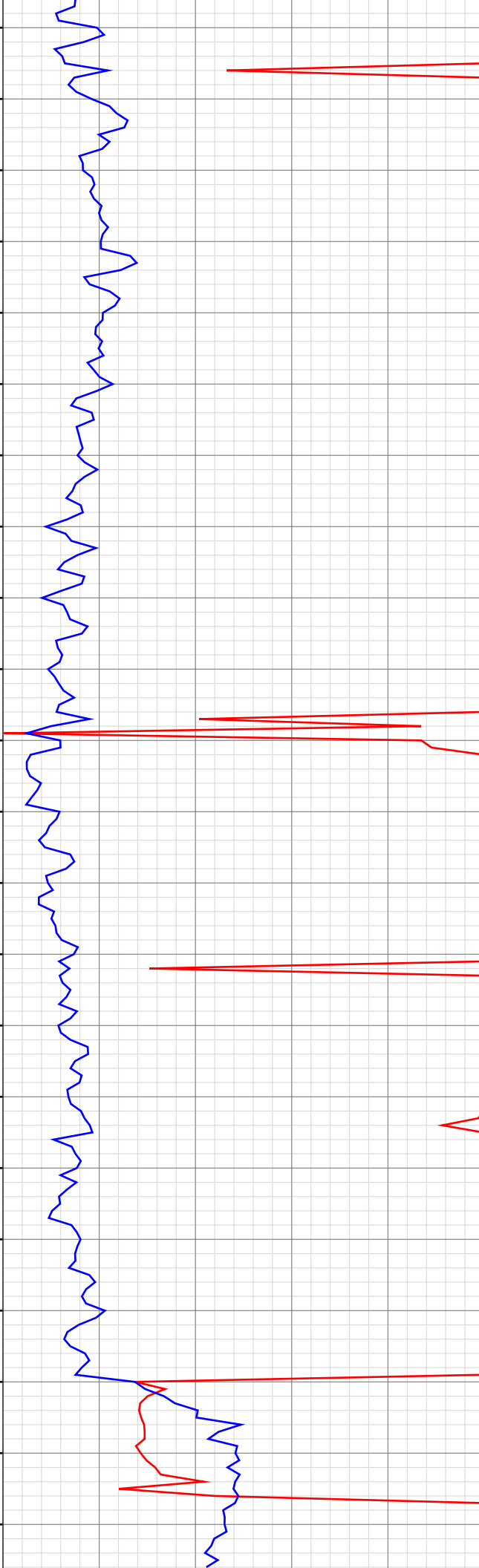
2287.15ft: MUD VIS 33.00  
2287.15ft: MUD WEIGHT 8.85  
2288.00ft: MUD PH 10.70

2302.27ft: SURVEY @ 2254 INC 6.6 AZI 232.1  
2302.27ft: ZWOB from SideKick sk-06-03-2616  
2302.27ft: ZDiffPressure from SideKick sk-06-03-2616  
2302.27ft: Connection at 2304.3  
2303.36ft: IN TALLY: HOLE DEPTH SET TO 2304.3

2393.90ft: Connection at 2396.2  
2393.90ft: ZDiffPressure from SideKick sk-06-03-2616  
2393.90ft: ZWOB from SideKick sk-06-03-2616

2427.00ft: MUD VIS 34.00  
2428.00ft: MUD WEIGHT 8.90  
2429.00ft: MUD PH 10.50

10:14 2480  
10:25 2490  
10:27 2500  
10:28 2510  
10:30 2520  
10:32 2530  
10:34 2540  
10:35 2550  
10:37 2560  
10:39 2570  
10:50 2580  
10:51 2590  
10:53 2600  
10:55 2610  
10:57 2620  
10:59 2630  
11:01 2640  
11:03 2650  
11:05 2660  
11:22 2670  
11:30 2680  
11:35 2690



2485.19ft: SURVEY @ 2437 INC 6.7 AZI 243.1  
2485.19ft: Connection at 2487.6  
2485.19ft: ZWOB from SideKick sk-06-03-2616  
2485.19ft: ZDiffPressure from SideKick sk-06-03-2616

2576.49ft: SURVEY @ 2529 INC 6.6 AZI 240.7  
2576.49ft: Connection at 2579.2  
2576.49ft: ZWOB from SideKick sk-06-03-2616  
2576.49ft: ZDiffPressure from SideKick sk-06-03-2616  
2579.00ft: IN TALLY: HOLE DEPTH SET TO 2579.2

2669.28ft: B.O.P. DRILL  
2669.28ft: MUD VIS 34.00  
2669.28ft: MUD WEIGHT 8.90  
2669.28ft: MUD PH 9.50  
2669.28ft: Connection at 2671.1  
2669.28ft: ZWOB from SideKick sk-06-03-2616  
2669.28ft: ZDiffPressure from SideKick sk-06-03-2616

2686.19ft: ROTATING

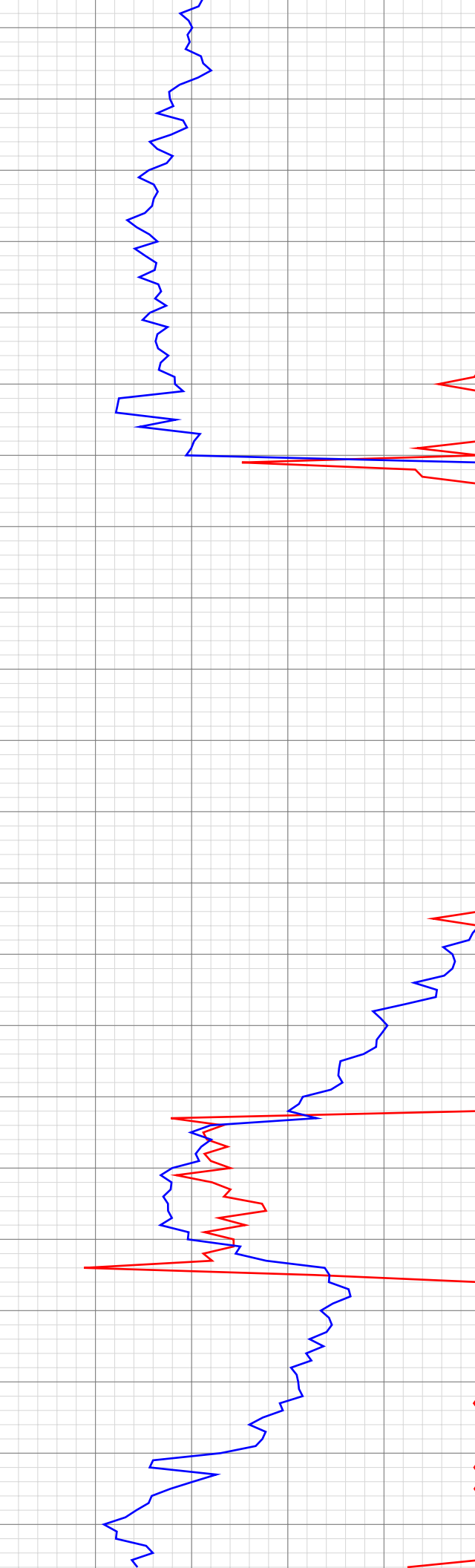
11:37 2700  
11:39 2710  
11:41 2720  
11:43 2730  
11:45 2740  
11:48 2750  
11:50 2760  
12:02 2770  
12:04 2780  
12:06 2790  
12:08 2800  
12:10 2810  
12:12 2820  
12:14 2830  
12:16 2840  
12:18 2850  
12:33 2860  
12:38 2870  
12:43 2880  
12:45 2890  
12:47 2900  
12:49 2910

2710.27ft: PUMP CELLAR  
  
2760.66ft: SURVEY @ 2702 INC 7.7 AZI 146.9  
2760.66ft: Connection at 2762.4  
2760.66ft: BLOW OUT FLOWLINE  
2760.66ft: ZWOB from SideKick sk-06-03-2616  
2760.66ft: ZDiffPressure from SideKick sk-06-03-2616

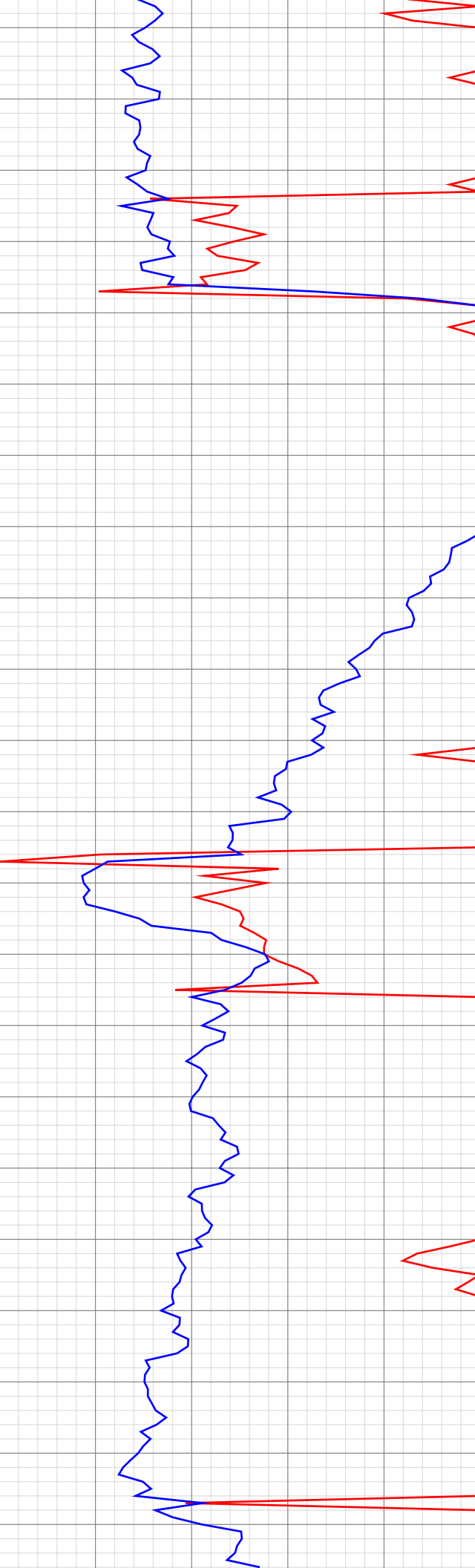
2793.12ft: MUD VIS 35.00  
2793.95ft: MUD WEIGHT 8.95  
2795.00ft: MUD PH 9.80

2829.13ft: PUMP CELLAR

2852.38ft: SURVEY @ 2803 INC 7.2 AZI 247.7  
2852.38ft: Connection at 2853.7  
2852.38ft: ZWOB from SideKick sk-06-03-2616  
2852.38ft: ZDiffPressure from SideKick sk-06-03-2616



12:52 2920  
12:54 2930  
12:56 2940  
13:10 2950  
13:15 2960  
13:17 2970  
13:19 2980  
13:21 2990  
13:23 3000  
13:25 3010  
13:27 3020  
13:29 3030  
13:41 3040  
13:46 3050  
13:49 3060  
13:51 3070  
13:53 3080  
13:55 3090  
13:57 3100  
14:00 3110  
14:02 3120  
14:48 3130



2943.56ft: SURVEY @ 2895 INC 9.1 AZI 251.6  
2943.56ft: ZDiffPressure from SideKick sk-06-03-2616  
2943.56ft: ZWOB from SideKick sk-06-03-2616  
2943.56ft: Connection at 2945.4

3035.31ft: ZWOB from SideKick sk-06-03-2616  
3035.31ft: ZDiffPressure from SideKick sk-06-03-2616  
3035.31ft: Connection at 3037.1  
3035.57ft: SURVEY @ 2987 INC 9.8 AZI 247.9  
3036.43ft: IN TALLY: HOLE DEPTH SET TO 3037.1

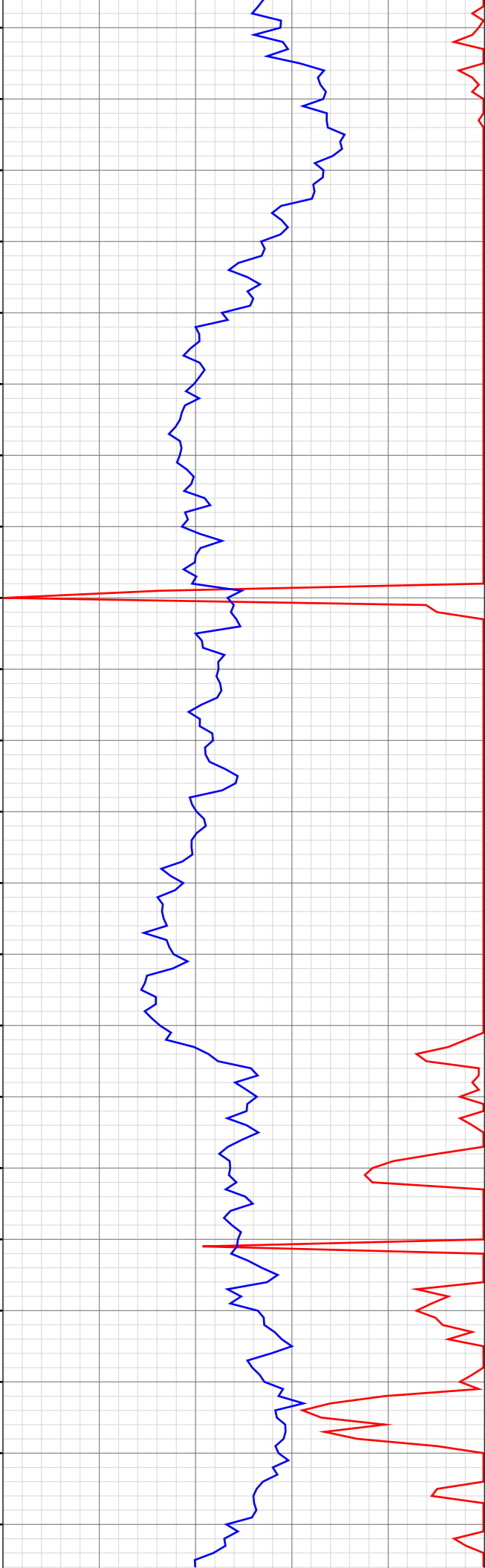
3126.79ft: RIG SERVICE  
3126.79ft: SURVEY @ 3078 INC 10.1 AZI 236.1  
3126.79ft: Connection at 3128.7  
3126.79ft: ZWOB from SideKick sk-06-03-2616  
3126.79ft: ZDiffPressure from SideKick sk-06-03-2616

14:50 3140  
14:52 3150  
14:55 3160  
14:57 3170  
14:59 3180  
15:01 3190  
15:03 3200  
15:05 3210  
15:19 3220  
15:21 3230  
15:23 3240  
15:25 3250  
15:27 3260  
15:29 3270  
15:31 3280  
15:34 3290  
15:36 3300  
15:39 3310  
15:50 3320  
15:52 3330  
15:55 3340  
15:57 3350

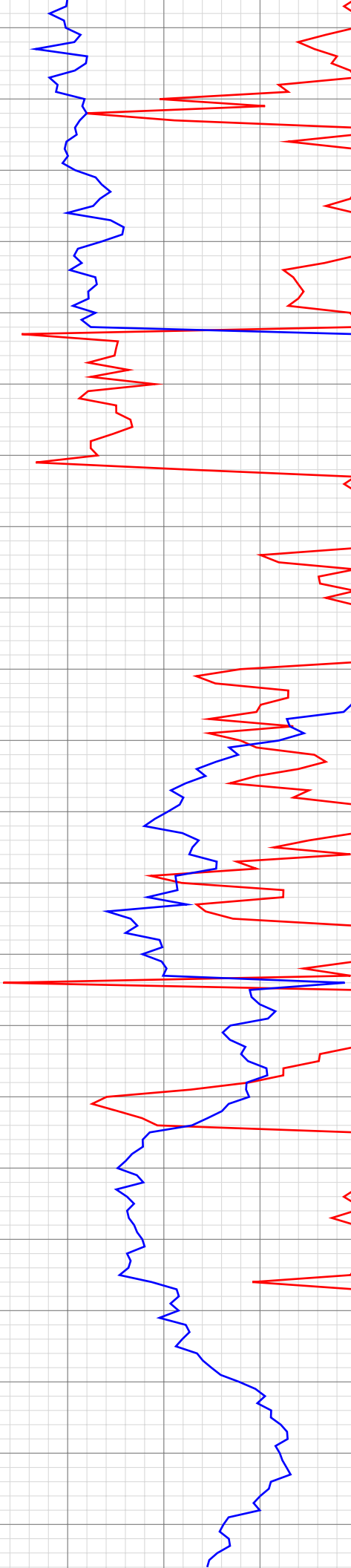
3218.20ft: MUD VIS 34.00  
3218.20ft: MUD WEIGHT 9.05  
3218.20ft: MUD PH 9.10  
3218.20ft: ZDiffPressure from SideKick sk-06-03-2616  
3218.20ft: ZDiffPressure from SideKick sk-06-03-2616  
3218.20ft: ZWOB from SideKick sk-06-03-2616  
3218.20ft: Connection at 3220.3  
3220.00ft: IN TALLY: HOLE DEPTH SET TO 3220.3

3310.63ft: SURVEY @ 3262 INC 9.5 AZI 237.2  
3310.63ft: ZWOB from SideKick sk-06-03-2616  
3310.63ft: ZDiffPressure from SideKick sk-06-03-2616  
3310.63ft: Connection at 3312.3

3346.82ft: MUD VIS 35.00  
3347.01ft: MUD WEIGHT 9.05  
3347.64ft: MUD PH 9.10  
3350.98ft: PUMPED SWEEP



16:00 3360  
16:02 3370  
16:05 3380  
16:07 3390  
16:10 3400  
16:22 3410  
16:27 3420  
16:30 3430  
16:32 3440  
16:34 3450  
16:37 3460  
16:40 3470  
16:43 3480  
16:46 3490  
17:00 3500  
17:03 3510  
17:06 3520  
17:08 3530  
17:10 3540  
17:12 3550  
17:14 3560  
17:16 3570

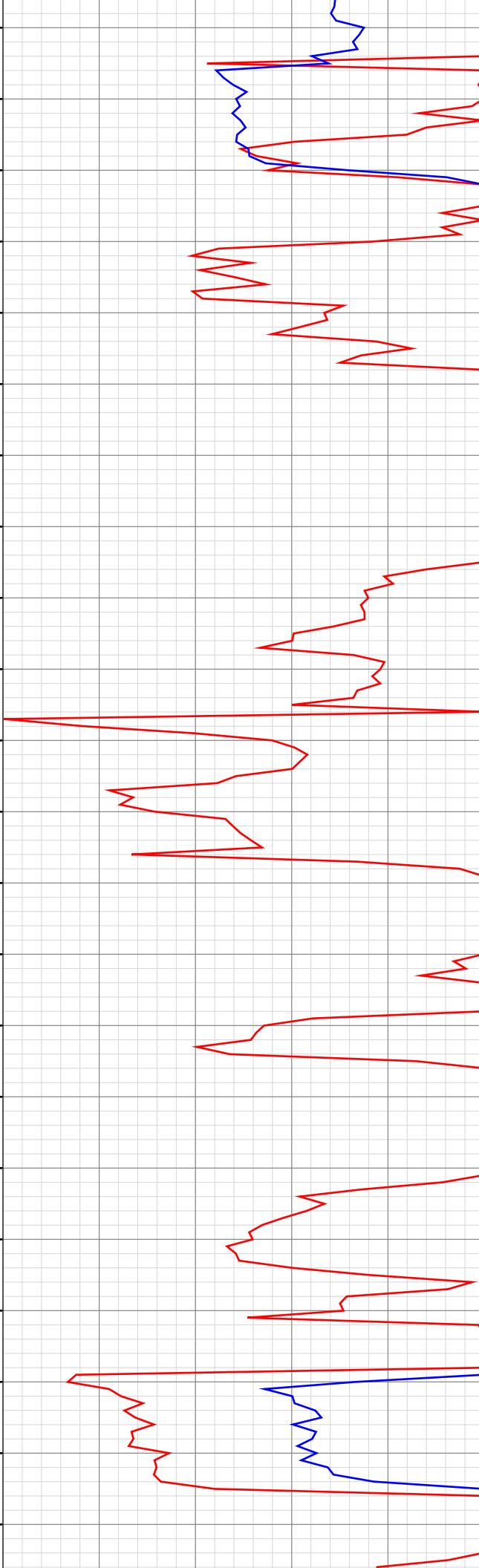


3402.43ft: ZWOB from SideKick sk-06-03-2616  
3402.43ft: ZDiffPressure from SideKick sk-06-03-2616  
3402.43ft: Connection at 3403.7

3493.83ft: SPR'S  
3493.83ft: SURVEY @ 3445 INC 8.0 AZI 231.0  
3493.83ft: ZDiffPressure from SideKick sk-06-03-2616  
3493.83ft: ZWOB from SideKick sk-06-03-2616  
3493.83ft: Connection at 3495.2  
3495.37ft: IN TALLY: HOLE DEPTH SET TO 3495.2

3566.01ft: MUD VIS 36.00  
3566.37ft: MUD WEIGHT 9.05  
3566.37ft: MUD PH 0.90

17:18 3580  
17:27 3590  
17:31 3600  
17:33 3610  
17:38 3620  
17:41 3630  
17:44 3640  
17:45 3650  
17:48 3660  
17:51 3670  
18:02 3680  
18:09 3690  
18:12 3700  
18:14 3710  
18:17 3720  
18:20 3730  
18:22 3740  
18:26 3750  
18:29 3760  
18:41 3770  
18:51 3780  
18:55 3790



3584.81ft: ZWOB from SideKick sk-06-03-2616  
3584.81ft: ZDiffPressure from SideKick sk-06-03-2616  
3584.81ft: Connection at 3585.8

3677.00ft: IN TALLY: HOLE DEPTH SET TO 3677.2  
3677.17ft: MUD WEIGHT 9.00  
3677.17ft: MUD VIS 36.00  
3677.17ft: MUD PH 9.30  
3677.17ft: SURVEY @ 3627' INC 7.1 AZ 228.7 Connection at 3677.2

3694.82ft: ROTATING

3700.26ft: PUMPED SWEEP

3709.06ft: ZERO ALL PUMPS from SideKick sk-11-11-1355

3768.31ft: SURVEY @ 3718' INC 7.0 AZ 241.7 Connection at 3768.9  
3770.41ft: PUMP CELLAR

3784.25ft: ROTATING  
3784.25ft: ZWOB from SideKick sk-06-03-2616

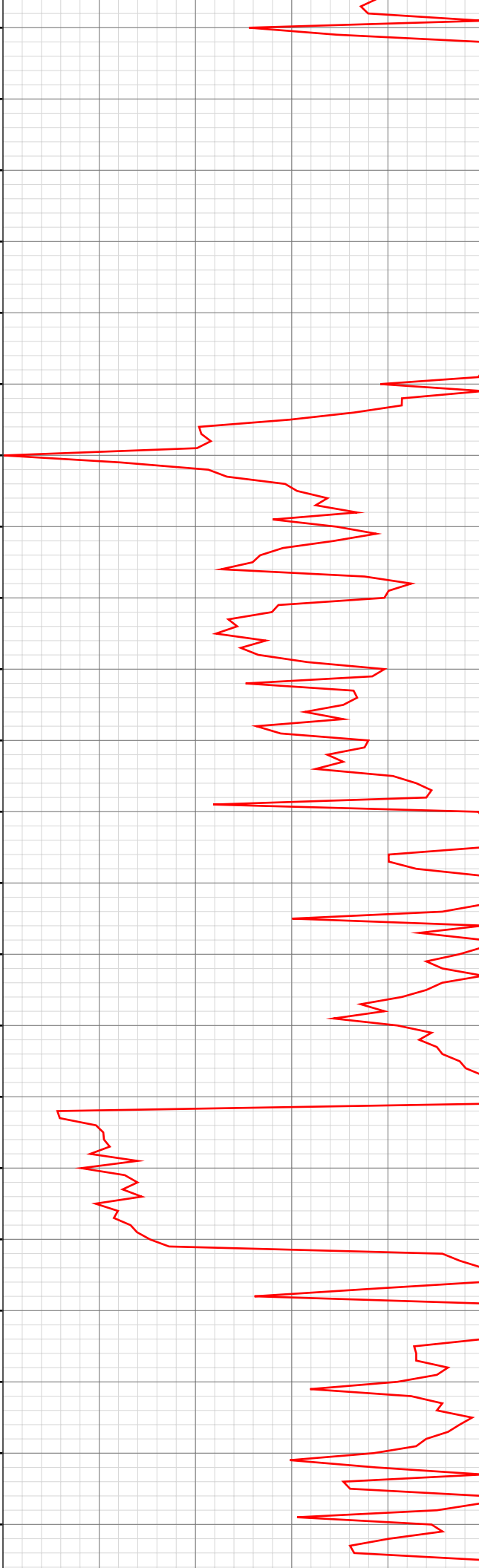
18:58 3800  
19:00 3810  
19:02 3820  
19:04 3830  
19:06 3840  
19:07 3850  
19:12 3860  
19:23 3870  
19:27 3880  
19:31 3890  
19:35 3900  
19:38 3910  
19:40 3920  
19:43 3930  
19:46 3940  
19:48 3950  
20:07 3960  
20:17 3970  
20:22 3980  
20:24 3990  
20:27 4000  
20:30 4010

3798.95ft: ZERO ALL PUMPS from SideKick sk-11-11-1355  
  
3859.68ft: IN TALLY: HOLE DEPTH SET TO 3860.2  
3860.24ft: MUD WEIGHT 9.00  
3860.24ft: MUD VIS 36.00  
3860.24ft: MUD PH 9.00  
3860.24ft: SURVEY @ 3810' INC 8.1 AZ 247.5  
3860.24ft: Connection at 3860.2  
3860.24ft: ZDiffPressure from SideKick sk-06-03-2616

3873.98ft: ZERO ALL PUMPS from SideKick sk-11-11-1355

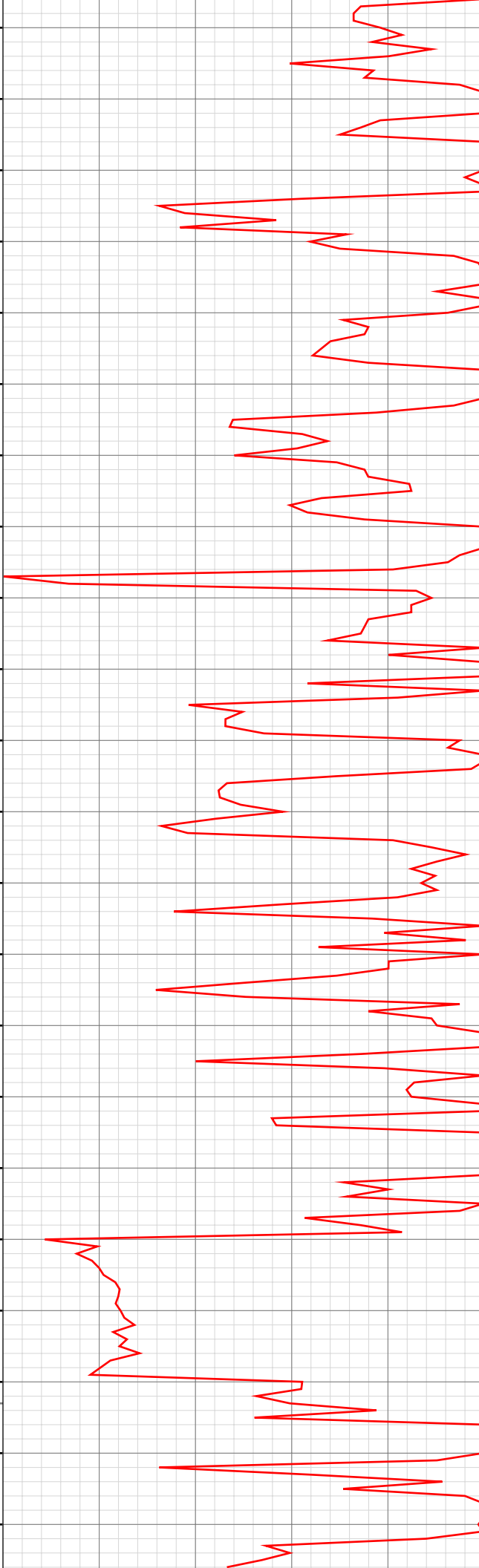
3951.35ft: SURVEY @ 3901' INC 7.3 AZ 248.0  
3951.35ft: Connection at 3951.8

3966.21ft: TESTING PVT ON TANK #8  
3970.47ft: ZWOB from SideKick sk-06-03-2616

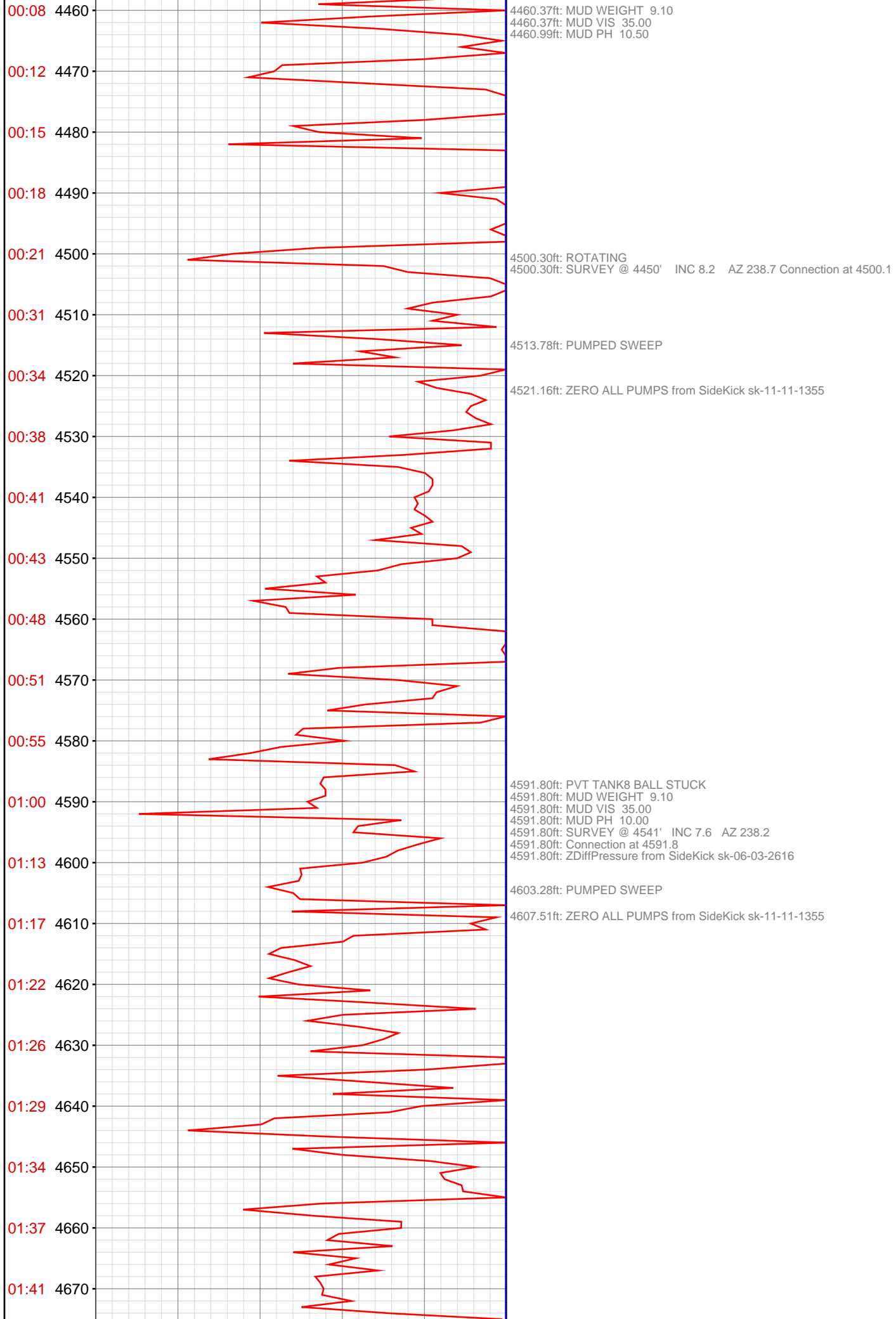


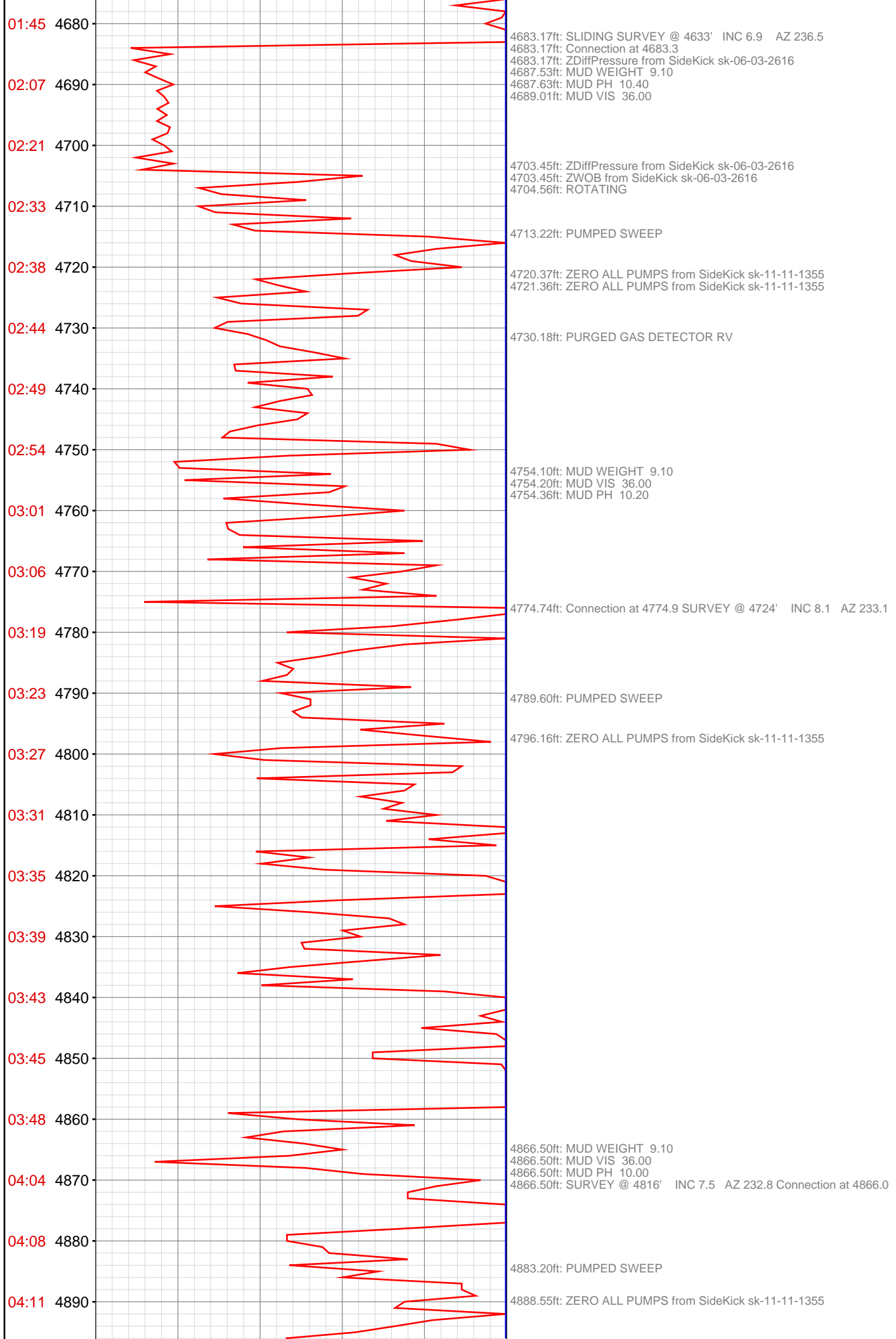


22:25 4240  
22:28 4250  
22:30 4260  
22:35 4270  
22:37 4280  
22:40 4290  
22:44 4300  
22:47 4310  
22:57 4320  
23:00 4330  
23:04 4340  
23:07 4350  
23:11 4360  
23:14 4370  
23:18 4380  
23:21 4390  
23:23 4400  
23:36 4410  
23:47 4420  
23:59 4430  
Mar 02, 2013  
00:02 4440  
00:04 4450



4238.32ft: PUMPED SWEEP  
4243.34ft: ZERO ALL PUMPS from SideKick sk-11-11-1355  
4316.99ft: IN TALLY: HOLE DEPTH SET TO 4317.7  
4317.72ft: SURVEY @ 4267' INC 8.2 AZ 233.4 Connection at 4317.7  
4352.17ft: PUMPED SWEEP  
4358.01ft: ZERO ALL PUMPS from SideKick sk-11-11-1355  
4377.62ft: MUD WEIGHT 9.10  
4377.99ft: MUD VIS 35.00  
4378.15ft: MUD PH 10.60  
4409.09ft: SURVEY @ 4359' INC 7.6 AZ 232.7  
4409.09ft: Connection at 4409.3  
4428.41ft: ROTATING  
4428.41ft: ZWOB from SideKick sk-06-03-2616  
4440.65ft: PUMPED SWEEP  
4450.98ft: ZERO ALL PUMPS from SideKick sk-11-11-1355





04:14 4900  
04:17 4910  
04:21 4920  
04:24 4930  
04:28 4940  
04:32 4950  
04:50 4960  
05:08 4970  
05:19 4980  
05:24 4990  
05:29 5000  
05:34 5010  
05:38 5020  
05:42 5030  
05:45 5040  
06:01 5050  
06:06 5060  
06:11 5070  
06:16 5080  
06:21 5090  
06:26 5100  
06:33 5110



4957.84ft: SURVEY @ 4907' INC 6.5 AZ 228.9 SLIDING  
4957.84ft: Connection at 4957.4  
4957.84ft: ZDiffPressure from SideKick sk-06-03-2616

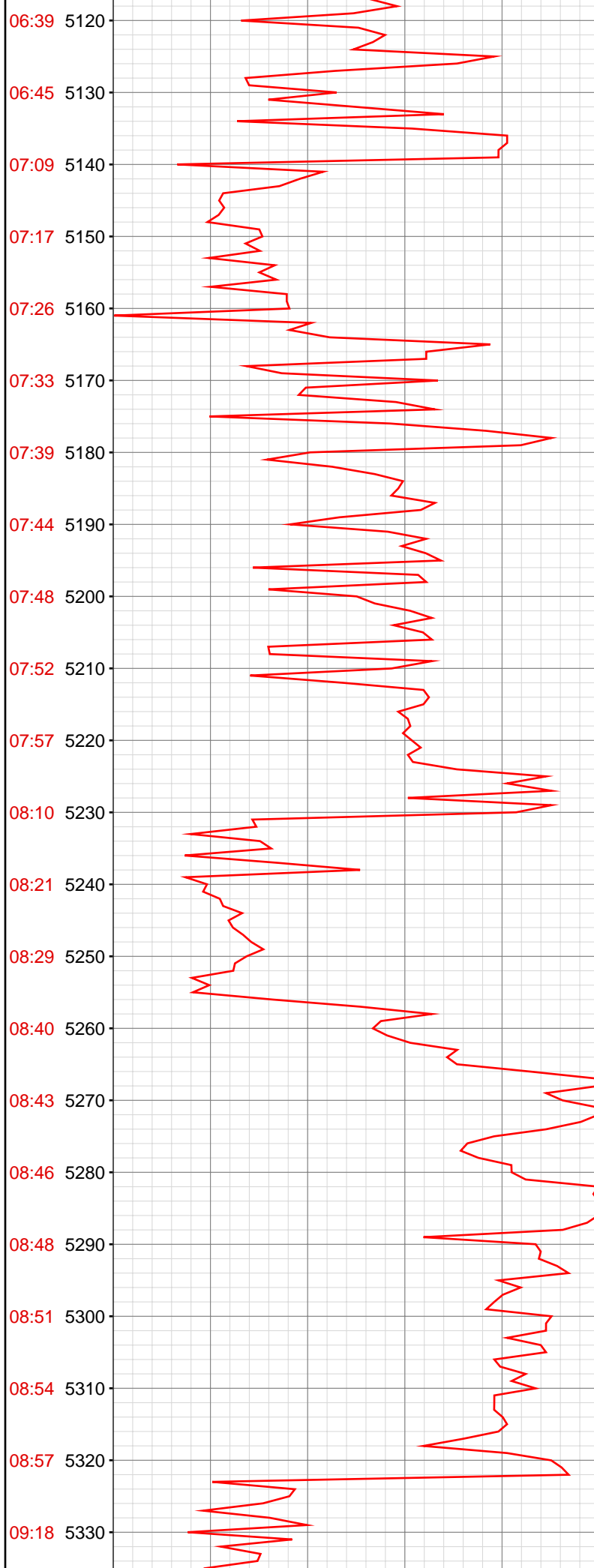
4975.62ft: ZWOB from SideKick sk-06-03-2616

4981.99ft: MUD VIS 37.00  
4982.19ft: MUD WEIGHT 9.20  
4982.19ft: MUD PH 10.40

5049.51ft: ZWOB from SideKick sk-06-03-2616  
5049.51ft: ZDiffPressure from SideKick sk-06-03-2616  
5049.51ft: Connection at 5048.9  
5050.49ft: IN TALLY: HOLE DEPTH SET TO 5049.0

5061.35ft: MUD WEIGHT 36.00  
5062.01ft: MUD WEIGHT 9.20  
5062.66ft: MUD PH 10.00

5096.69ft: PUMPED SWEEP



5139.37ft: CIRCULATE  
5139.37ft: Connection at 5139.5  
5139.37ft: ZWOB from SideKick sk-06-03-2616  
5139.37ft: ZDiffPressure from SideKick sk-06-03-2616  
5139.37ft: MUD VIS 35.00  
5139.37ft: MUD WEIGHT 9.30  
5139.37ft: MUD PH 9.90  
5139.37ft: SLIDING  
5139.37ft: MUD WEIGHT 9.30  
5143.47ft: GA - Manual purge  
5146.36ft: GA - Zeroed

5160.20ft: ZWOB from SideKick sk-06-03-2616  
5160.20ft: ZDiffPressure from SideKick sk-06-03-2616

5230.87ft: ZWOB from SideKick sk-06-03-2616  
5230.87ft: ZDiffPressure from SideKick sk-06-03-2616  
5230.87ft: Connection at 5231.2  
5231.50ft: SLIDING  
5235.07ft: MUD VIS 36.00  
5235.43ft: MUD WEIGHT 9.45  
5235.76ft: MUD PH 9.80  
5236.45ft: MUD WEIGHT 9.35

5254.76ft: ZWOB from SideKick sk-06-03-2616  
5254.76ft: ZDiffPressure from SideKick sk-06-03-2616

5322.28ft: MUD VIS 34.00  
5322.28ft: MUD WEIGHT 9.50  
5322.28ft: MUD PH 9.70  
5322.28ft: MUD WEIGHT 9.40  
5322.28ft: SPR  
5322.28ft: SURVEY @ 5272 INC 3.3 AZI 239.9  
5322.28ft: ZWOB from SideKick sk-06-03-2616  
5322.28ft: Connection at 5323.0  
5322.28ft: ZDiffPressure from SideKick sk-06-03-2616  
5322.28ft: ZWOB from SideKick sk-06-03-2616

09:31 5340  
09:36 5350  
09:40 5360  
09:43 5370  
09:47 5380  
09:51 5390  
09:55 5400  
09:59 5410  
10:12 5420  
10:16 5430  
10:19 5440  
10:22 5450  
10:26 5460  
10:31 5470  
10:35 5480  
10:38 5490  
10:42 5500  
10:55 5510  
10:59 5520  
11:06 5530  
11:11 5540  
11:14 5550

5339.99ft: ZWOB from SideKick sk-06-03-2616  
5339.99ft: ZDiffPressure from SideKick sk-06-03-2616

5386.71ft: MUD VIS 34.00  
5386.94ft: MUD WEIGHT 9.55  
5387.07ft: MUD PH 9.50  
5387.27ft: MUD WEIGHT 9.45

5413.71ft: SURVEY @ 5181 INC 4.4 AZI 221.8  
5413.71ft: SURVEY @ 5363 INC 2.7 AZI 265.0  
5413.71ft: ZWOB from SideKick sk-06-03-2616  
5413.71ft: ZDiffPressure from SideKick sk-06-03-2616  
5413.71ft: Connection at 5413.9

5472.74ft: MUD WEIGHT 9.60  
5473.00ft: MUD WEIGHT 9.55

5504.72ft: SURVEY @ 5455 INC 1.5 AZI 270.6  
5504.72ft: ZDiffPressure from SideKick sk-06-03-2616  
5504.72ft: ZWOB from SideKick sk-06-03-2616  
5504.72ft: Connection at 5505.8  
5506.00ft: IN TALLY: HOLE DEPTH SET TO 5505.8  
5510.20ft: MUD VIS 34.00  
5510.99ft: MUD WEIGHT 9.55  
5511.48ft: MUD PH 9.40

5530.41ft: PUMPED SWEEP



11:19 5560  
11:23 5570  
11:27 5580  
11:30 5590  
11:56 5600  
12:00 5610  
12:04 5620  
12:08 5630  
12:12 5640  
12:15 5650  
12:20 5660  
12:24 5670  
12:28 5680  
12:41 5690  
12:45 5700  
12:50 5710  
12:54 5720  
13:01 5730  
13:06 5740  
13:11 5750  
13:16 5760  
13:21 5770

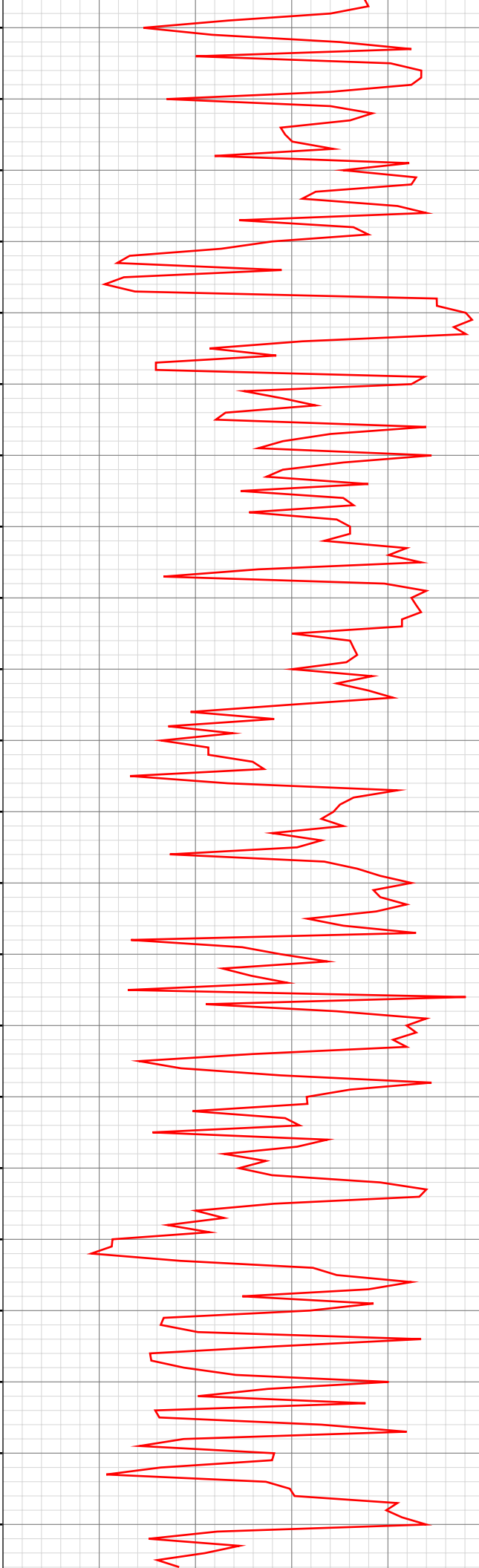
5596.03ft: SURVEY @ 5547 INC .9 AZI 277.9  
5596.03ft: Connection at 5597.2  
5596.03ft: ZWOB from SideKick sk-06-03-2616  
5596.03ft: ZDiffPressure from SideKick sk-06-03-2616

5608.24ft: MUD VIS 34.00  
5608.99ft: MUD WEIGHT 9.65  
5608.99ft: MUD PH 9.30

5687.47ft: ZDiffPressure from SideKick sk-06-03-2616  
5687.47ft: ZWOB from SideKick sk-06-03-2616  
5687.47ft: Connection at 5689.0

5745.11ft: MUD VIS 35.00  
5745.11ft: MUD WEIGHT 9.70  
5745.57ft: MUD PH 9.10

5770.04ft: SURVEY @ 5700 INC .9 AZI 277.9



13:41 5780  
13:49 5790  
13:55 5800  
14:03 5810  
14:09 5820  
14:14 5830  
14:18 5840  
14:22 5850  
14:28 5860  
14:32 5870  
15:44 5880  
15:48 5890  
15:51 5900  
15:58 5910  
16:03 5920  
16:08 5930  
16:13 5940  
16:20 5950  
16:25 5960  
17:09 5970  
17:22 5980  
17:31 5990



5779.04ft: SURVEY @ 5730 INC 1.9 AZI 59.7  
5779.04ft: ZWOB from SideKick sk-06-03-2616  
5779.04ft: ZDiffPressure from SideKick sk-06-03-2616  
5779.04ft: Connection at 5780.6  
5779.04ft: ZWOB from SideKick sk-06-03-2616

5801.18ft: ZWOB from SideKick sk-06-03-2616  
5801.18ft: ZDiffPressure from SideKick sk-06-03-2616

5818.90ft: PUMPED SWEEP

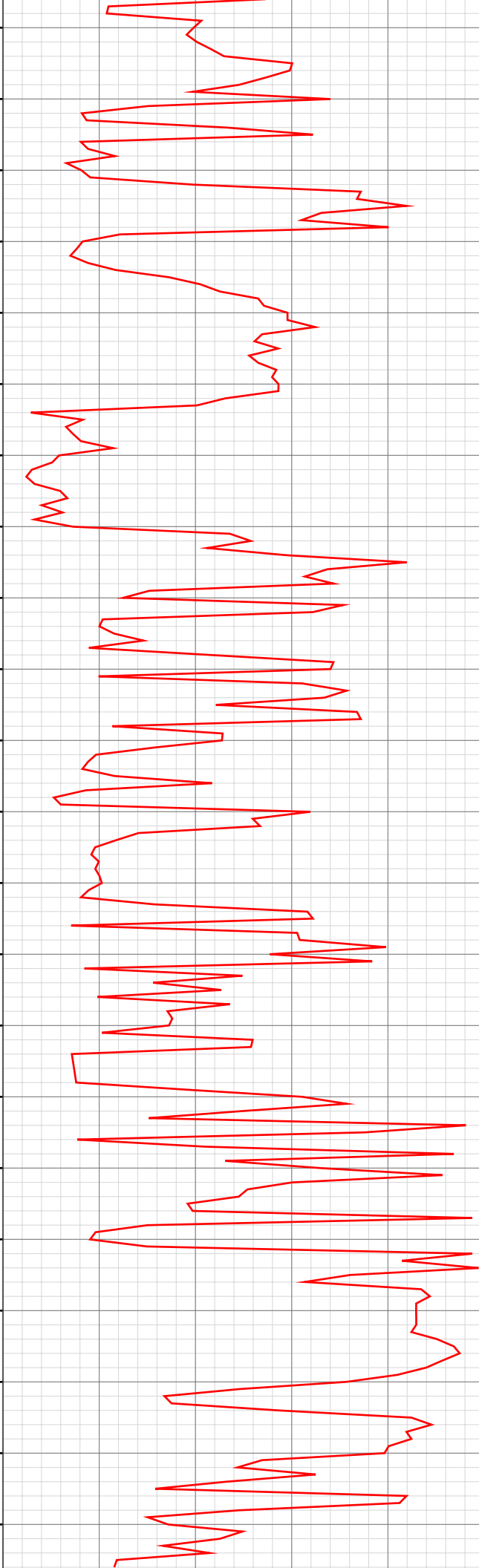
5830.54ft: MUD VIS 36.00  
5831.00ft: MUD WEIGHT 9.80  
5831.00ft: MUD PH 9.00

5870.74ft: RIG SERVICE  
5870.74ft: MUD VIS 36.00  
5870.74ft: MUD WEIGHT 9.85  
5870.74ft: SURVEY @ 5822 INC 1.7 AZI 357.6  
5870.74ft: MUD PH 8.90  
5870.74ft: ZWOB from SideKick sk-06-03-2616  
5870.74ft: ZDiffPressure from SideKick sk-06-03-2616  
5870.74ft: Connection at 5872.2  
5870.74ft: ZDiffPressure from SideKick sk-06-03-2616  
5872.15ft: IN TALLY: HOLE DEPTH SET TO 5872.2

5961.32ft: MUD VIS 35.00  
5961.32ft: MUD WEIGHT 9.85  
5961.32ft: MUD PH 9.50  
5961.32ft: LAY DOWN JOINT OF PIPE  
5961.32ft: SURVEY @ 5913 INC 2.6 AZI 11.6  
5961.32ft: ZWOB from SideKick sk-06-03-2616  
5961.32ft: ZDiffPressure from SideKick sk-06-03-2616  
5961.32ft: Connection at 5963.9  
5961.32ft: ZDiffPressure from SideKick sk-06-03-2616  
5961.32ft: ZWOB from SideKick sk-06-03-2616  
5972.77ft: ON GAS BUSTER

5984.71ft: ZWOB from SideKick sk-06-03-2616  
5984.71ft: ZDiffPressure from SideKick sk-06-03-2616

17:37 6000  
17:42 6010  
17:54 6020  
18:02 6030  
18:10 6040  
18:14 6050  
18:41 6060  
19:11 6070  
19:17 6080  
19:25 6090  
19:29 6100  
19:42 6110  
19:52 6120  
20:00 6130  
20:08 6140  
20:22 6150  
20:27 6160  
20:34 6170  
20:37 6180  
20:40 6190  
20:44 6200  
20:49 6210



6018.37ft: PUMPED SWEEP  
6019.95ft: ZERO ALL PUMPS from SideKick sk-11-11-1355  
6024.48ft: MUD WEIGHT 9.80  
6025.10ft: MUD VIS 36.00  
6025.10ft: MUD PH 9.40

6053.08ft: SLIDING  
6053.08ft: SURVEY @ 6005' INC 1.5 AZ 8.5 Connection at 6055.5  
6053.08ft: ZDiffPressure from SideKick sk-06-03-2616  
6055.18ft: OFF OF BUSTER

6059.68ft: ZDiffPressure from SideKick sk-06-03-2616

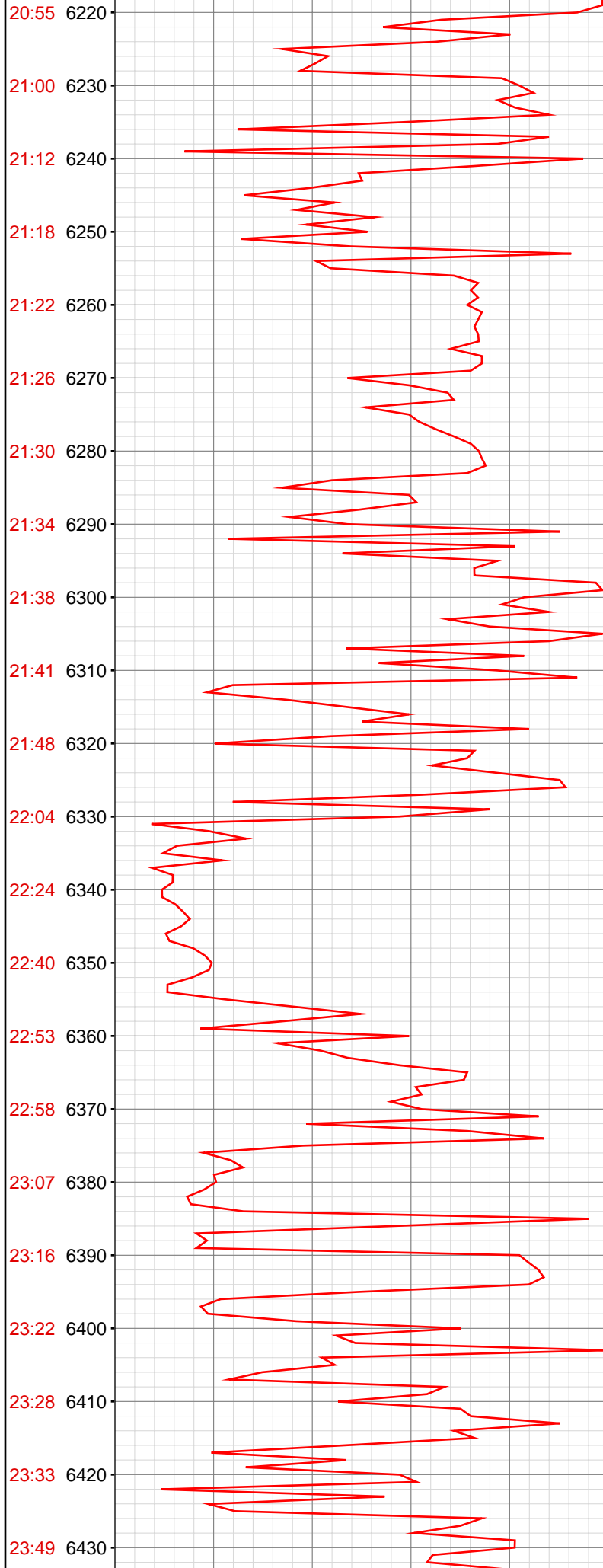
6068.11ft: PUMP CELLAR

6102.23ft: MUD VIS 36.00  
6102.36ft: MUD WEIGHT 9.75  
6102.36ft: MUD PH 9.20

6144.39ft: IN TALLY: HOLE DEPTH SET TO 6147.3  
6147.34ft: SURVEY @ 6097' INC 1.2 AZ 340.6  
6147.34ft: Connection at 6147.3  
6147.34ft: ZDiffPressure from SideKick sk-06-03-2616  
6147.34ft: ZDiffPressure from SideKick sk-06-03-2616

6167.32ft: PUMPED SWEEP  
6169.78ft: ZERO ALL PUMPS from SideKick sk-11-11-1355

6190.09ft: MUD WEIGHT 9.70  
6190.45ft: MUD VIS 36.00  
6190.78ft: MUD PH 9.20



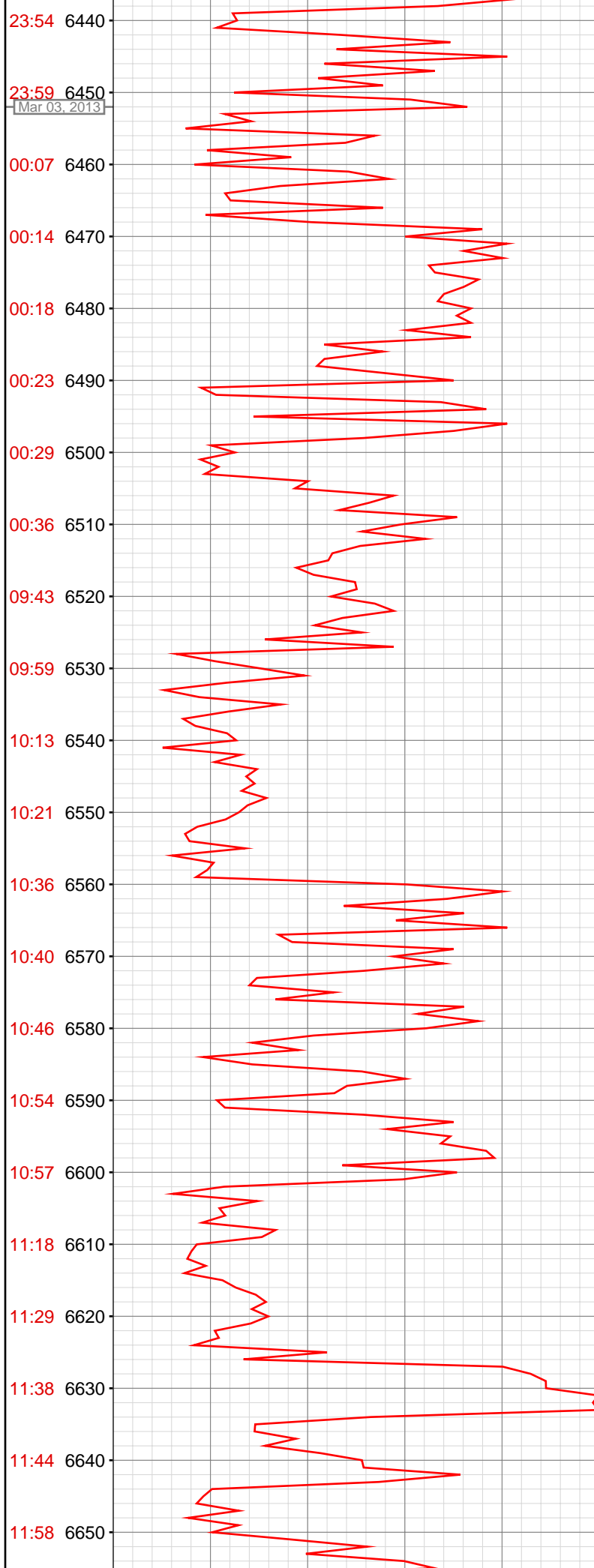
6238.98ft: Connection at 6238.9  
6238.98ft: SURVEY @ 6188' INC 1.2 AZ 12.5  
6238.98ft: ZDiffPressure from SideKick sk-06-03-2616  
6246.59ft: MUD WEIGHT 9.80  
6246.85ft: MUD VIS 36.00  
6246.85ft: MUD PH 9.00  
6247.70ft: PUMPED SWEEP  
6250.62ft: ZERO ALL PUMPS from SideKick sk-11-11-1355

6330.45ft: SURVEY @ 6279' INC 1.8 AZ 41.9 SLIDING  
6330.45ft: Connection at 6329.8  
6330.64ft: ZDiffPressure from SideKick sk-06-03-2616  
6331.82ft: MUD WEIGHT 9.80  
6332.02ft: MUD VIS 36.00  
6332.22ft: MUD PH 9.40  
6336.71ft: MUD WEIGHT 9.80  
6336.71ft: MUD VIS 36.00  
6336.71ft: MUD PH 9.40

6354.30ft: ZWOB from SideKick sk-06-03-2616  
6358.10ft: DRAIN BUSTER  
6358.73ft: ZERO ALL PUMPS from SideKick sk-11-11-1355

6374.05ft: MUD WEIGHT 9.90  
6374.64ft: MUD VIS 36.00  
6374.93ft: MUD PH 9.50  
6376.35ft: TRANSF COMPLETE

6421.98ft: SURVEY @ 6371' INC 1.2 AZ 63.1 Connection at 6421.5



6449.44ft: MUD WEIGHT 9.90  
6449.44ft: MUD VIS 36.00  
6449.61ft: MUD PH 9.40

6494.95ft: PUMPED SWEEP  
6512.86ft: SURVEY @ 6462' INC 1.6 AZ 70.0  
6512.86ft: PUMPED SWEEP  
6512.86ft: ZERO ALL PUMPS from SideKick sk-11-11-1355  
6512.86ft: MUD WEIGHT 9.95  
6512.86ft: MUD VIS 37.00  
6512.86ft: MUD PH 9.10  
6512.86ft: FLOW CHECK  
6512.86ft: FILL TRIP TANK  
6512.86ft: NO FLOW

6512.86ft: SPOT DRY PILL  
6512.86ft: ZERO ALL PUMPS from SideKick sk-06-03-2616  
6512.86ft: BLOW DOWN TOP DRIVE  
6512.86ft: MUD VIS 39.00  
6512.86ft: MUD WEIGHT 9.75  
6512.86ft: MUD PH 9.00  
6512.86ft: PULLING ROTATING RUBBER  
6512.86ft: OPENED FLOW LINE TO ACTIVE/DRAIN TRIP TANK  
6512.86ft: MUD VIS 35.00  
6512.86ft: MUD WEIGHT 9.80  
6512.86ft: MUD PH 9.00

6512.86ft: FUNC BLIND AND PIPE RAMS/BIT ON BANK  
6512.86ft: INSTALL ROT RUBBER  
6512.86ft: BIT DEPTH CHANGED TO 1023.0 FEET  
6512.86ft: CIRCULATE  
6512.86ft: BIT DEPTH CHANGED TO 5964.0 FEET  
6512.86ft: BIT DEPTH CHANGED TO 6421.5 FEET  
6512.86ft: ZERO ALL PUMPS from SideKick sk-06-03-2616  
6512.86ft: ZWOB from SideKick sk-06-03-2616  
6512.86ft: ZDiffPressure from SideKick sk-06-03-2616

6512.86ft: MUD VIS 38.00  
6512.86ft: MUD WEIGHT 9.95  
6512.86ft: MUD PH 8.90  
6512.86ft: ZDiffPressure from SideKick sk-06-03-2616  
6512.86ft: ZWOB from SideKick sk-06-03-2616  
6512.86ft: Connection at 6513.0  
6513.55ft: IN TALLY: HOLE DEPTH SET TO 6512.9  
6517.32ft: TRANSFERRED 70.00  
6527.56ft: ON BUSTER  
6527.56ft: ZWOB from SideKick sk-06-03-2616  
6527.56ft: ZDiffPressure from SideKick sk-06-03-2616  
6527.56ft: ZDiffPressure from SideKick sk-06-03-2616  
6527.56ft: ZWOB from SideKick sk-06-03-2616  
6540.19ft: TRANSFERRED 20.00

6558.27ft: ZWOB from SideKick sk-06-03-2616  
6558.27ft: ZDiffPressure from SideKick sk-06-03-2616

6602.99ft: MUD VIS 36.00  
6602.99ft: MUD WEIGHT 9.85  
6602.99ft: MUD PH 9.00  
6602.99ft: ZWOB from SideKick sk-06-03-2616  
6602.99ft: ZDiffPressure from SideKick sk-06-03-2616  
6602.99ft: Connection at 6604.8  
6602.99ft: ZWOB from SideKick sk-06-03-2616  
6602.99ft: SURVEY @ 6554 INC .7 AZI 60.9

6613.75ft: PURGE FLOWLINE WITH AIR  
6616.86ft: OFF GAS BUSTER

6623.62ft: ZWOB from SideKick sk-06-03-2616  
6623.62ft: ZDiffPressure from SideKick sk-06-03-2616  
6623.62ft: ZWOB from SideKick sk-06-03-2616

6640.75ft: PUMPED SWEEP  
6643.41ft: ZWOB from SideKick sk-06-03-2616  
6643.41ft: ZDiffPressure from SideKick sk-06-03-2616  
6643.41ft: ZDiffPressure from SideKick sk-06-03-2616  
6643.41ft: ZWOB from SideKick sk-06-03-2616  
6643.41ft: ZDiffPressure from SideKick sk-06-03-2616

12:04 6660  
12:10 6670  
12:14 6680  
12:26 6690  
12:47 6700  
12:52 6710  
13:00 6720  
13:04 6730  
13:11 6740  
13:15 6750  
13:20 6760  
13:23 6770  
13:28 6780  
13:50 6790  
13:53 6800  
13:58 6810  
14:04 6820  
14:07 6830  
14:11 6840  
14:16 6850  
14:20 6860  
14:24 6870

6664.63ft: MUD VIS 36.00  
6664.63ft: MUD WEIGHT 9.80  
6664.76ft: MUD PH 9.00

6694.46ft: SURVEY @ 6646 INC .8 AZI 241.4 Connection at 6696.6  
6694.46ft: ZWOB from SideKick sk-06-03-2616  
6694.46ft: ZDiffPressure from SideKick sk-06-03-2616  
6694.46ft: PUMPED SWEEP

6731.99ft: MUD VIS 35.00  
6731.99ft: MUD WEIGHT 9.75  
6732.61ft: MUD PH 9.10  
6735.17ft: ZWOB from SideKick sk-06-03-2616  
6735.17ft: ZWOB from SideKick sk-06-03-2616  
6735.17ft: ZDiffPressure from SideKick sk-06-03-2616

6785.86ft: Connection at 6788.4  
6785.86ft: SURVEY @ 6738 INC .3 AZI 66.4  
6785.86ft: ZDiffPressure from SideKick sk-06-03-2616  
6785.86ft: ZWOB from SideKick sk-06-03-2616

6807.58ft: PUMP CELLAR  
6807.58ft: MUD VIS 36.00  
6807.58ft: MUD WEIGHT 9.80  
6808.01ft: MUD PH 9.50

6877.07ft: PURGE FLOWLINE W/AIR

6877.07ft: Connection at 6880.1  
6877.07ft: ZWOB from SideKick sk-06-03-2616  
6877.07ft: ZDiffPressure from SideKick sk-06-03-2616  
6877.07ft: ZWOB from SideKick sk-06-03-2616

6900.69ft: ON GAS BUSTER

6909.74ft: MUD VIS 35.00  
6909.74ft: MUD WEIGHT 9.90  
6909.74ft: MUD PH 9.20  
6911.09ft: ZWOB from SideKick sk-06-03-2616  
6911.09ft: ZDiffPressure from SideKick sk-06-03-2616

6968.47ft: MUD VIS 36.00  
6968.47ft: MUD WEIGHT 9.75 RIG SERVICE  
6968.47ft: MUD PH 9.10  
6968.47ft: SURVEY @ 6921 INC 1.0 AZI 53.9  
6968.47ft: ZDiffPressure from SideKick sk-06-03-2616  
6968.47ft: ZWOB from SideKick sk-06-03-2616  
6968.47ft: Connection at 6971.5  
6968.47ft: ZWOB from SideKick sk-06-03-2616

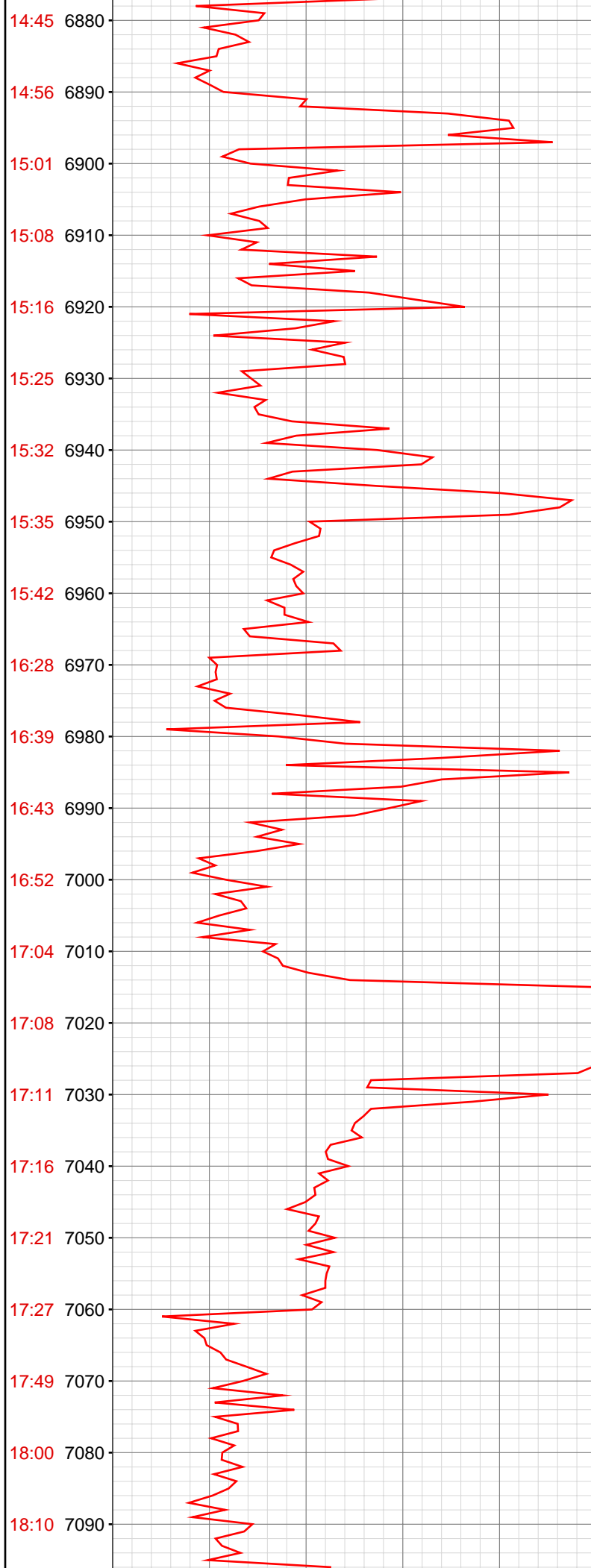
6985.01ft: PURGE FLOWLINE W/AIR

7007.78ft: ZWOB from SideKick sk-06-03-2616  
7007.78ft: ZDiffPressure from SideKick sk-06-03-2616

7060.14ft: MUD VIS 36.00  
7060.14ft: MUD WEIGHT 9.75  
7060.14ft: MUD PH 9.00  
7060.14ft: Connection at 7063.3  
7060.14ft: SURVEY @ 7013 inc 1.1 azi 83.3  
7060.14ft: ZWOB from SideKick sk-06-03-2616  
7060.14ft: ZDiffPressure from SideKick sk-06-03-2616

7088.06ft: MUD WEIGHT 9.85  
7088.06ft: MUD VIS 35.00  
7088.22ft: MUD PH 9.00

7094.95ft: ROTATING  
7094.95ft: ZDiffPressure from SideKick sk-06-03-2616



7094.95ft: ZDiffPressure from SideKick sk-06-03-2616

7094.95ft: ZWOB from SideKick sk-06-03-2616

7104.10ft: PUMPED SWEEP

7106.82ft: ZERO ALL PUMPS from SideKick sk-11-11-1355

7151.25ft: IN TALLY: HOLE DEPTH SET TO 7155.1

7155.05ft: Connection at 7155.1

7155.05ft: SURVEY @ 7104' INC 1.4 AZ 200.7

7155.05ft: ZDiffPressure from SideKick sk-06-03-2616

7178.08ft: ROTATING

7187.47ft: PUMPED SWEEP

7189.80ft: ZERO ALL PUMPS from SideKick sk-11-11-1355

7246.59ft: Connection at 7246.4 SURVEY @ 7196' INC 1.6 AZ 213.8

7246.59ft: ZWOB from SideKick sk-06-03-2616

7250.26ft: MUD WEIGHT 9.95

7250.56ft: MUD VIS 36.00

7250.56ft: MUD PH 9.50

18:19 7100

18:27 7110

18:34 7120

18:39 7130

18:43 7140

18:47 7150

19:02 7160

19:15 7170

19:22 7180

19:29 7190

19:33 7200

19:39 7210

19:47 7220

19:54 7230

19:59 7240

20:14 7250

20:19 7260

20:22 7270

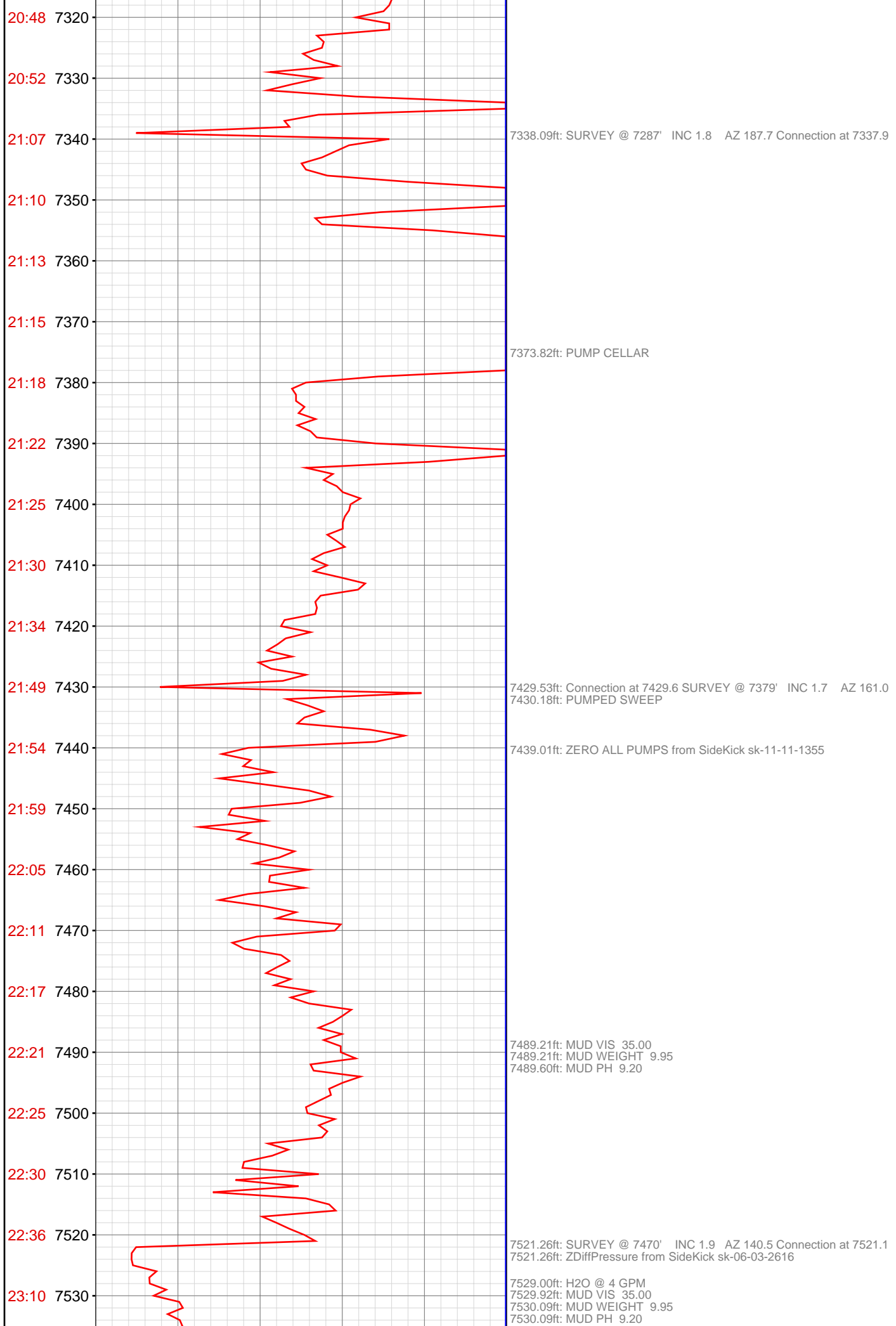
20:26 7280

20:31 7290

20:38 7300

20:44 7310





20:48 7320

20:52 7330

21:07 7340

21:10 7350

21:13 7360

21:15 7370

21:18 7380

21:22 7390

21:25 7400

21:30 7410

21:34 7420

21:49 7430

21:54 7440

21:59 7450

22:05 7460

22:11 7470

22:17 7480

22:21 7490

22:25 7500

22:30 7510

22:36 7520

23:10 7530

7338.09ft: SURVEY @ 7287' INC 1.8 AZ 187.7 Connection at 7337.9

7373.82ft: PUMP CELLAR

7429.53ft: Connection at 7429.6 SURVEY @ 7379' INC 1.7 AZ 161.0  
7430.18ft: PUMPED SWEEP

7439.01ft: ZERO ALL PUMPS from SideKick sk-11-11-1355

7489.21ft: MUD VIS 35.00  
7489.21ft: MUD WEIGHT 9.95  
7489.60ft: MUD PH 9.20

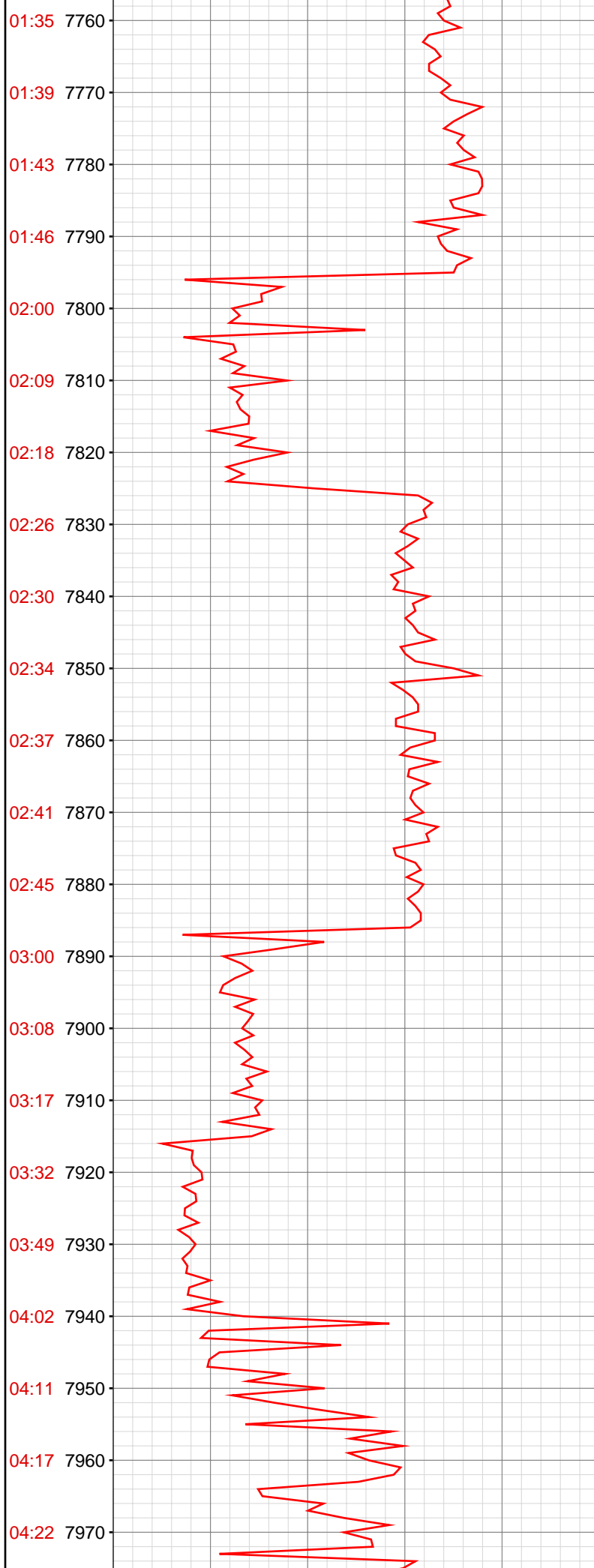
7521.26ft: SURVEY @ 7470' INC 1.9 AZ 140.5 Connection at 7521.1  
7521.26ft: ZDiffPressure from SideKick sk-06-03-2616

7529.00ft: H2O @ 4 GPM  
7529.92ft: MUD VIS 35.00  
7530.09ft: MUD WEIGHT 9.95  
7530.09ft: MUD PH 9.20

23:23 7540  
23:36 7550  
23:41 7560  
23:47 7570  
23:55 7580  
Mar 04, 2013  
00:01 7590  
00:06 7600  
00:11 7610  
00:25 7620  
00:31 7630  
00:36 7640  
00:40 7650  
00:44 7660  
00:48 7670  
00:52 7680  
00:56 7690  
00:59 7700  
01:12 7710  
01:21 7720  
01:25 7730  
01:29 7740  
01:32 7750



7560.14ft: PUMPED SWEEP  
7565.26ft: ZERO ALL PUMPS from SideKick sk-11-11-1355  
7612.73ft: Connection at 7612.2 SURVEY @ 7562' INC 0.7 AZ 266.3  
7623.26ft: PUMPED SWEEP  
7629.36ft: ZERO ALL PUMPS from SideKick sk-11-11-1355  
7704.36ft: MUD WEIGHT 10.10  
7704.36ft: MUD VIS 35.00  
7704.36ft: MUD PH 9.00  
7704.36ft: Connection at 7703.8  
7743.44ft: PUMPED SWEEP  
7752.43ft: ZERO ALL PUMPS from SideKick sk-11-11-1355



7795.44ft: Connection at 7795.7 SURVEY @ 7745' INC 1.5 AZ 71.4

7824.21ft: ZWOB from SideKick sk-06-03-2616

7860.01ft: ZERO ALL PUMPS from SideKick sk-11-11-1355

7886.58ft: MUD WEIGHT 10.15  
7886.58ft: MUD VIS 36.00  
7886.84ft: MUD PH 9.40  
7886.84ft: Connection at 7886.6 SURVEY @ 7836' INC 0.4 AZ 72.6

7915.52ft: ZWOB from SideKick sk-06-03-2616  
7918.21ft: ZDiffPressure from SideKick sk-06-03-2616  
7921.49ft: ZERO ALL PUMPS from SideKick sk-11-11-1355

7942.68ft: MUD WEIGHT 10.15  
7942.78ft: MUD VIS 35.00  
7943.01ft: MUD PH 9.30

7977.99ft: SURVEY @ 7927' INC 1.0 AZ 247.6 Connection at 7978.0  
7977.99ft: ZDiffPressure from SideKick sk-06-03-2616  
7978.45ft: IN TALLY: HOLE DEPTH SET TO 7978.0

8004.89ft: PUMPED SWEEP

8009.15ft: ZERO ALL PUMPS from SideKick sk-11-11-1355

8048.06ft: MUD WEIGHT 10.20  
8048.23ft: MUD VIS 36.00  
8048.23ft: MUD PH 9.20

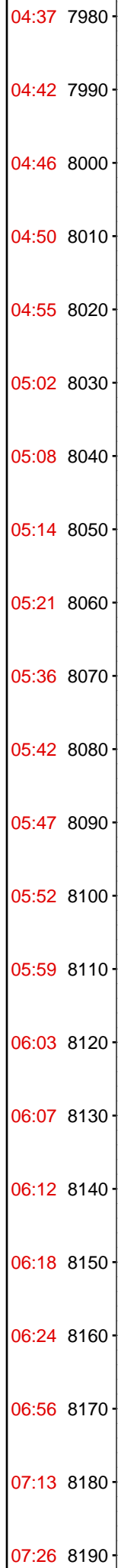
8069.36ft: IN TALLY: HOLE DEPTH SET TO 8069.9  
8069.91ft: SURVEY @ 8019' INC 0.1 AZ 266.9 Connection at 8069.9  
8069.91ft: ZDiffPressure from SideKick sk-06-03-2616  
8070.96ft: PUMPED SWEEP

8076.05ft: ZERO ALL PUMPS from SideKick sk-11-11-1355

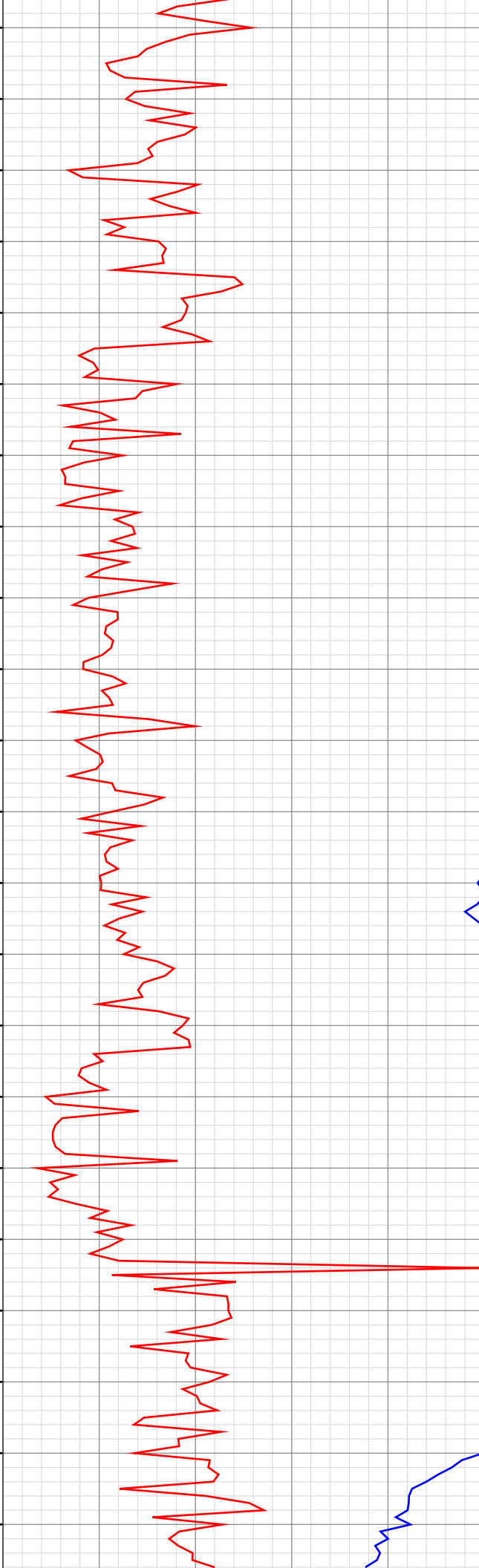
8103.67ft: MUD VIS 37.00  
8104.17ft: MUD WEIGHT 10.10  
8104.17ft: MUD PH 9.00

8161.19ft: SPR'S  
8161.19ft: SURVEY @ 8111 INC 1.1 AZI 71.5  
8161.19ft: ZDiffPressure from SideKick sk-06-03-2616  
8161.19ft: ZWOB from SideKick sk-06-03-2616  
8161.19ft: Connection at 8161.5  
8161.19ft: ZWOB from SideKick sk-06-03-2616  
8169.78ft: MUD VIS 37.00  
8169.82ft: MUD WEIGHT 10.15  
8169.82ft: MUD PH 9.20

8190.03ft: ZDiffPressure from SideKick sk-06-03-2616  
8190.03ft: ZWOB from SideKick sk-06-03-2616  
8190.62ft: ZERO ALL PUMPS from SideKick sk-11-11-1355



07:31 8200  
07:39 8210  
07:48 8220  
07:57 8230  
08:04 8240  
08:13 8250  
08:37 8260  
08:53 8270  
09:09 8280  
09:20 8290  
09:31 8300  
09:42 8310  
09:53 8320  
10:04 8330  
10:11 8340  
10:37 8350  
10:57 8360  
11:13 8370  
11:24 8380  
11:30 8390  
11:37 8400  
11:43 8410



8207.12ft: TRANSFERRED 60.00

8232.91ft: MUD VIS 37.00  
8233.01ft: MUD WEIGHT 10.20  
8233.20ft: MUD PH 9.30

8252.13ft: SURVEY @ 8203 INC .4 AZI 85.1  
8252.13ft: Connection at 8253.1  
8252.13ft: ZWOB from SideKick sk-06-03-2616  
8252.13ft: ZDiffPressure from SideKick sk-06-03-2616  
8252.13ft: ZWOB from SideKick sk-06-03-2616  
8252.13ft: ZWOB from SideKick sk-06-03-2616  
8260.79ft: ZWOB from SideKick sk-06-03-2616  
8260.79ft: ZDiffPressure from SideKick sk-06-03-2616  
8263.12ft: ZDiffPressure from SideKick sk-06-03-2616

8280.77ft: ZDiffPressure from SideKick sk-06-03-2616  
8280.77ft: ZWOB from SideKick sk-06-03-2616

8287.40ft: PUMPED SWEEP

8295.24ft: MUD VIS 38.00  
8295.24ft: MUD WEIGHT 10.10  
8295.31ft: MUD PH 9.50

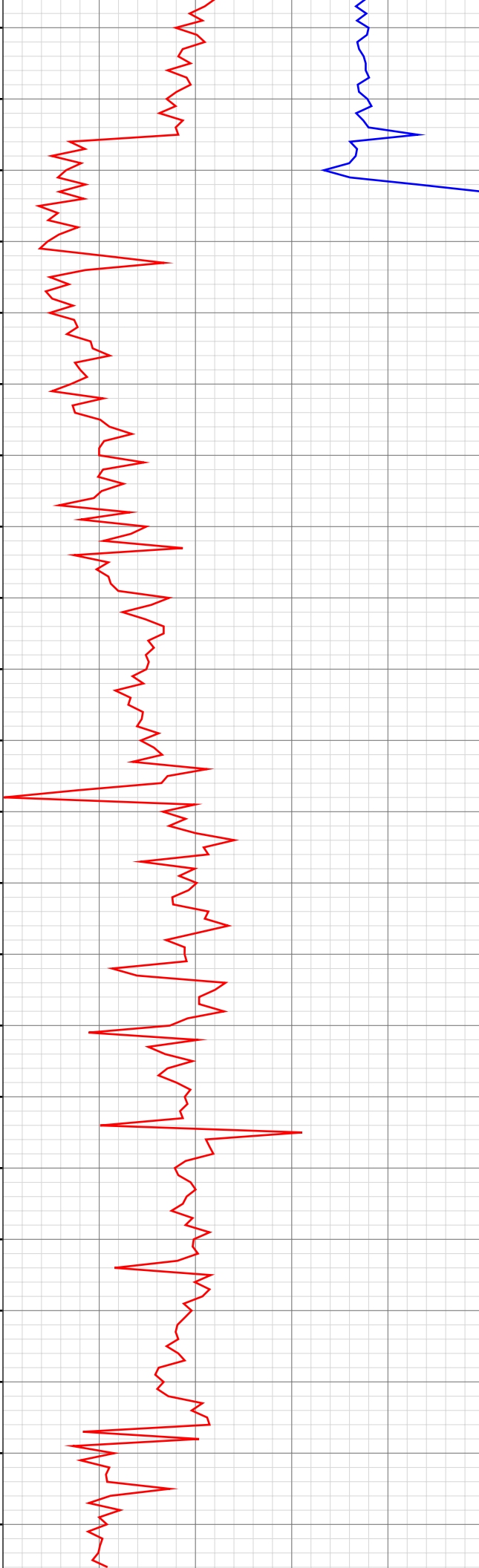
8325.79ft: MUD VIS 37.00  
8326.18ft: MUD WEIGHT 10.20  
8326.18ft: MUD PH 9.30

8343.50ft: Connection at 8344.9  
8343.50ft: ZWOB from SideKick sk-06-03-2616  
8343.50ft: ZDiffPressure from SideKick sk-06-03-2616  
8343.50ft: ZWOB from SideKick sk-06-03-2616

8363.75ft: MUD VIS 37.00  
8363.75ft: MUD WEIGHT 10.15  
8363.75ft: MUD PH 9.10

8374.28ft: ZWOB from SideKick sk-06-03-2616  
8374.28ft: ZDiffPressure from SideKick sk-06-03-2616

11:49 8420  
11:56 8430  
12:23 8440  
12:42 8450  
13:07 8460  
13:22 8470  
13:36 8480  
13:48 8490  
14:00 8500  
14:08 8510  
14:16 8520  
14:35 8530  
14:42 8540  
14:47 8550  
14:54 8560  
15:01 8570  
15:13 8580  
15:20 8590  
15:25 8600  
15:32 8610  
16:46 8620  
16:59 8630



8435.07ft: MUD VIS 37.00  
8435.07ft: MUD WEIGHT 10.20  
8435.07ft: MUD PH 9.00  
8435.07ft: SURVEY @ 8386 INC 1.5 AZI 57.6  
8435.07ft: Connection at 8436.6  
8435.07ft: ZWOB from SideKick sk-06-03-2616  
8435.07ft: ZDiffPressure from SideKick sk-06-03-2616  
8435.07ft: ZWOB from SideKick sk-06-03-2616

8454.79ft: ZDiffPressure from SideKick sk-06-03-2616  
8454.79ft: ZWOB from SideKick sk-06-03-2616  
8454.79ft: ZWOB from SideKick sk-06-03-2616  
8455.32ft: MUD VIS 37.00  
8455.38ft: MUD WEIGHT 10.20  
8455.51ft: MUD PH 9.10

8493.27ft: ZDiffPressure from SideKick sk-06-03-2616  
8493.27ft: ZWOB from SideKick sk-06-03-2616

8510.01ft: MUD VIS 37.00  
8510.11ft: MUD WEIGHT 10.20  
8510.11ft: MUD PH 9.00

8526.41ft: Connection at 8528.3 SURVEY @ 8478 INC .3 AZI 47.7  
8526.41ft: ZWOB from SideKick sk-06-03-2616  
8526.41ft: ZDiffPressure from SideKick sk-06-03-2616  
8527.99ft: IN TALLY: HOLE DEPTH SET TO 8528.3

8573.82ft: MUD VIS 37.00  
8573.82ft: MUD WEIGHT 10.25  
8573.82ft: MUD PH 9.10  
8573.82ft: ZDiffPressure from SideKick sk-06-03-2616  
8573.82ft: ZWOB from SideKick sk-06-03-2616

8618.11ft: RIG SERVICE  
8618.11ft: TRANSFERRED 60.00  
8618.11ft: MUD VIS 37.00  
8618.11ft: MUD WEIGHT 10.35  
8618.11ft: MUD PH 9.10  
8618.11ft: ZWOB from SideKick sk-06-03-2616  
8618.11ft: ZDiffPressure from SideKick sk-06-03-2616  
8618.11ft: ZDiffPressure from SideKick sk-06-03-2616  
8618.11ft: ZWOB from SideKick sk-06-03-2616  
8620.18ft: Connection at 8620.0

17:11 8640  
17:21 8650  
17:38 8660  
17:51 8670  
17:56 8680  
18:01 8690  
18:04 8700  
18:19 8710  
18:22 8720  
18:26 8730  
18:30 8740  
18:33 8750  
18:37 8760  
18:41 8770  
18:45 8780  
18:49 8790  
18:52 8800  
19:07 8810  
19:11 8820  
19:15 8830  
19:19 8840  
19:22 8850



8662.96ft: ZWOB from SideKick sk-06-03-2616  
8662.96ft: ZDiffPressure from SideKick sk-06-03-2616  
8662.96ft: ZDiffPressure from SideKick sk-06-03-2616  
8662.96ft: ZWOB from SideKick sk-06-03-2616

8709.61ft: IN TALLY: HOLE DEPTH SET TO 8711.8  
8711.78ft: Connection at 8711.8  
8711.78ft: ZDiffPressure from SideKick sk-06-03-2616  
8712.34ft: SURVEY @ 8711 INC .7 AZI 10.9  
8715.52ft: SURVEY CORR DEPTH 8661' INC 0.7 AZ 10.9

8745.64ft: MUD WEIGHT 10.35  
8746.06ft: MUD VIS 37.00  
8746.06ft: MUD PH 9.10

8778.54ft: ZERO ALL PUMPS from SideKick sk-11-11-1355  
8791.44ft: MUD VIS 37.00  
8792.00ft: MUD WEIGHT 10.35  
8792.00ft: MUD PH 9.00  
8803.35ft: Connection at 8803.2 SURVEY @ 8753' INC 1.1 AZ 57.7  
8858.89ft: PUMPED SWEEP  
8879.95ft: ZWOB from SideKick sk-06-03-2616  
8879.95ft: SURVEY @ 8830' INC 2.1 AZ 71.7  
8879.95ft: PUMPED SWEEP  
8879.95ft: ZDiffPressure from SideKick sk-06-03-2616  
8879.95ft: ZERO ALL PUMPS from SideKick sk-11-11-1355  
8879.95ft: MAX PULL LIMIT CHANGED FROM 449.618 kLBS TO 450.0 kLBS

8879.95ft: MUD WEIGHT 10.40  
8879.95ft: MUD VIS 37.00  
8879.95ft: MUD PH 8.90  
8879.95ft: MUD WEIGHT 10.50  
8879.95ft: MUD VIS 38.00  
8879.95ft: MUD PH 8.80  
8879.95ft: FLOW CHECK  
8879.95ft: PUMP CELLAR  
8879.95ft: MUD WEIGHT 10.55  
8879.95ft: MUD VIS 38.00  
8879.95ft: MUD PH 9.00  
8879.95ft: NO FLOW/PUMPED DRY PILL  
8879.95ft: MUD VIS 48.00  
8879.95ft: MUD VIS 42.00  
8879.95ft: MUD WEIGHT 10.50  
8879.95ft: MUD PH 9.80  
8879.95ft: PVT:Volume alarm muted  
8879.95ft: MUD VIS 50.00  
8879.95ft: MUD VIS 50.00  
8879.95ft: MUD WEIGHT 10.55  
8879.95ft: MUD PH 9.80  
8879.95ft: FILL PIPE  
8879.95ft: PVT:Volume alarm reactivated: un-muted  
8879.95ft: PUMPED SWEEP

8879.95ft: ZERO ALL PUMPS from SideKick sk-11-11-1355  
8880.54ft: MUD VIS 50.00  
8880.54ft: MUD VIS 50.00  
8890.54ft: MUD WEIGHT 10.55

19:26 8860  
19:29 8870  
Mar 05, 2013  
8890



8880.54ft: MUD WEIGHT 10.35  
8880.54ft: MUD PH 9.00  
8880.54ft: FLOW CHECK  
8880.54ft: FILL TRIP TANK  
8880.54ft: MUD WEIGHT 10.65  
8880.54ft: MUD VIS 50.00  
8880.54ft: MUD PH 9.10  
8880.54ft: NO FLOW//PUMPED DRY PILL  
8880.54ft: BLOW DOWN TOP DRIVE  
8880.54ft: MUD VIS 50.00  
8880.54ft: MUD WEIGHT 10.65  
8880.54ft: MUD PH 9.10  
8880.54ft: MUD VIS 51.00  
8880.54ft: MUD WEIGHT 10.60  
8880.54ft: MUD PH 9.10  
8880.54ft: MUD VIS 51.00  
8880.54ft: MUD WEIGHT 10.60  
8880.54ft: MUD PH 9.30  
8880.54ft: PULLING ROTATING RUBBER  
8880.54ft: L/D MUD MOTOR  
8880.54ft: BIT DEPTH CHANGED TO 0.0 FEET  
8880.54ft: RU/LOGGERS  
8880.54ft: RUN OPEN HOLE LOGGS