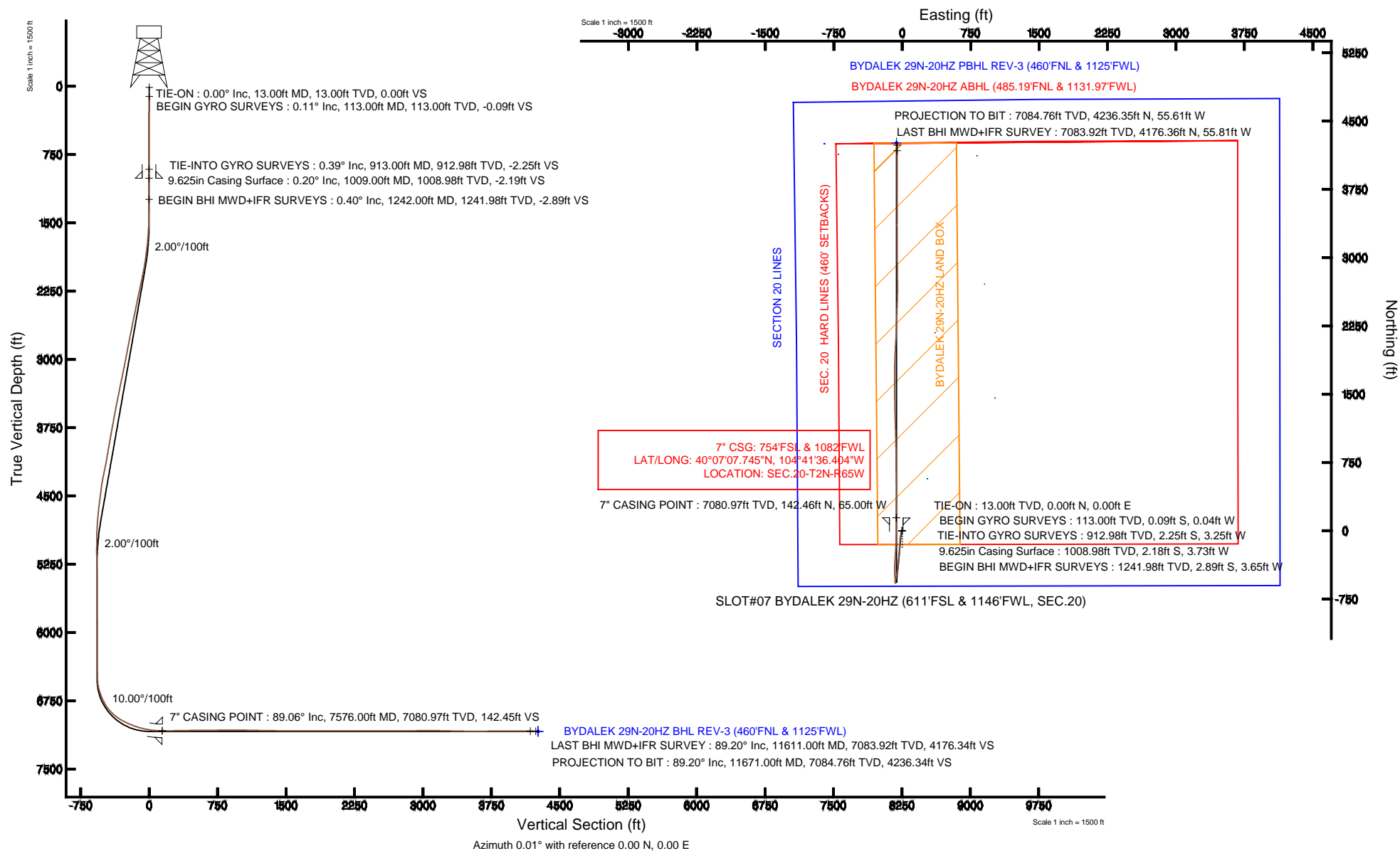


KERR-MCGEE OIL & GAS ONSHORE LP

Location: COLORADO Slot: SLOT#07 BYDALEK 29N-20HZ (611'FSL & 1146'FWL, SEC.20)
Field: WELD COUNTY (KERR MCGEE) Well: BYDALEK 29N-20HZ
Facility: SEC.20-T2N-R65W Wellbore: BYDALEK 29N-20HZ PWB

Plot reference wellpath is BYDALEK 29N-20HZ (REV-B.0) PWP

True vertical depths are referenced to ENSIGN 138 (RKB)	Grid System: NAD83 / Lambert Colorado SP, Northern Zone (501), US feet
Measured depths are referenced to ENSIGN 138 (RKB)	North Reference: True north
ENSGN 138 (RKB) to Mean Sea Level: 4945 feet	Scale: True distance
Mean Sea Level to Mud line (At Slot: SLOT#07 BYDALEK 29N-20HZ (611'FSL & 1146'FWL, SEC.20)): 0 feet	Depths are in feet
Coordinates are in feet referenced to Slot	Created by: wlsjef02 on 6/5/2013





Actual Wellpath Report

BYDALEK 29N-20HZ AWP

Page 1 of 5



REFERENCE WELLPATH IDENTIFICATION

Operator	KERR-MCGEE OIL & GAS ONSHORE LP	Slot	SLOT#07 BYDALEK 29N-20HZ (611'FSL & 1146'FWL, SEC.20)
Area	COLORADO	Well	BYDALEK 29N-20HZ
Field	WELD COUNTY (KERR MCGEE)	Wellbore	BYDALEK 29N-20HZ AWB
Facility	SEC.20-T2N-R65W		

REPORT SETUP INFORMATION

Projection System	NAD83 / Lambert Colorado SP, Northern Zone (501), US feet	Software System	WellArchitect® 4.0.0
North Reference	True	User	Wilsjef02
Scale	0.99996	Report Generated	6/5/2013 at 08:59:59
Convergence at slot	n/a	Database/Source file	WellArchitectDB/BYDALEK_29N-20HZ_AWB.xml

WELLPATH LOCATION

	Local coordinates		Grid coordinates		Geographic coordinates	
	North[ft]	East[ft]	Easting[US ft]	Northing[US ft]	Latitude	Longitude
Slot Location	119.91	-0.78	3225628.65	1287013.37	40°07'06.337"N	104°41'35.567"W
Facility Reference Pt			3225630.51	1286893.48	40°07'05.152"N	104°41'35.557"W
Field Reference Pt			3197771.84	1268891.29	40°04'09.600"N	104°47'36.000"W

WELLPATH DATUM

Calculation method	Minimum curvature	ENSIGN 138 (RKB) to Facility Vertical Datum	4945.00ft
Horizontal Reference Pt	Slot	ENSIGN 138 (RKB) to Mean Sea Level	4945.00ft
Vertical Reference Pt	ENSIGN 138 (RKB)	ENSIGN 138 (RKB) to Mud Line at Slot (SLOT#07 BYDALEK 29N-20HZ (611'FSL & 1146'FWL, SEC.20))	4945.00ft
MD Reference Pt	ENSIGN 138 (RKB)	Section Origin	N 0.00, E 0.00 ft
Field Vertical Reference	Mean Sea Level	Section Azimuth	0.01°



Actual Wellpath Report

BYDALEK 29N-20HZ AWP

Page 2 of 5



REFERENCE WELLPATH IDENTIFICATION

Operator	KERR-MCGEE OIL & GAS ONSHORE LP	Slot	SLOT#07 BYDALEK 29N-20HZ (611'FSL & 1146'FWL, SEC.20)
Area	COLORADO	Well	BYDALEK 29N-20HZ
Field	WELD COUNTY (KERR MCGEE)	Wellbore	BYDALEK 29N-20HZ AWB
Facility	SEC.20-T2N-R65W		

WELLPATH DATA (114 stations) † = interpolated/extrapolated station

MD [ft]	Inclination [°]	Azimuth [°]	TVD [ft]	Vert Sect [ft]	North [ft]	East [ft]	Latitude	Longitude	DLS [°/100ft]	Comments
0.00†	0.000	206.090	0.00	0.00	0.00	0.00	40°07'06.337"N	104°41'35.567"W	0.00	
13.00	0.000	206.090	13.00	0.00	0.00	0.00	40°07'06.337"N	104°41'35.567"W	0.00	TIE-ON
113.00	0.110	206.090	113.00	-0.09	-0.09	-0.04	40°07'06.336"N	104°41'35.568"W	0.11	BEGIN GYRO SURVEYS
213.00	0.350	183.490	213.00	-0.48	-0.48	-0.10	40°07'06.332"N	104°41'35.568"W	0.25	
313.00	0.480	209.750	313.00	-1.15	-1.15	-0.33	40°07'06.326"N	104°41'35.571"W	0.23	
413.00	0.250	220.340	412.99	-1.68	-1.68	-0.68	40°07'06.320"N	104°41'35.576"W	0.24	
513.00	0.610	249.110	512.99	-2.03	-2.03	-1.32	40°07'06.317"N	104°41'35.584"W	0.41	
613.00	0.100	181.400	612.99	-2.31	-2.31	-1.82	40°07'06.314"N	104°41'35.590"W	0.58	
713.00	0.210	212.140	712.99	-2.55	-2.55	-1.92	40°07'06.312"N	104°41'35.592"W	0.13	
813.00	0.560	292.440	812.99	-2.52	-2.52	-2.47	40°07'06.312"N	104°41'35.599"W	0.56	
913.00	0.390	284.710	912.98	-2.25	-2.25	-3.25	40°07'06.315"N	104°41'35.609"W	0.18	TIE-INTO GYRO SURVEYS
1242.00	0.400	143.900	1241.98	-2.89	-2.89	-3.65	40°07'06.308"N	104°41'35.614"W	0.23	BEGIN BHI MWD+IFR SURVEYS
1334.00	0.200	146.000	1333.98	-3.28	-3.28	-3.37	40°07'06.305"N	104°41'35.610"W	0.22	
1425.00	0.300	177.100	1424.98	-3.65	-3.65	-3.27	40°07'06.301"N	104°41'35.609"W	0.18	
1516.00	1.700	191.300	1515.96	-5.22	-5.21	-3.53	40°07'06.285"N	104°41'35.612"W	1.55	
1608.00	3.900	198.500	1607.85	-9.52	-9.52	-4.79	40°07'06.243"N	104°41'35.629"W	2.42	
1699.00	5.600	199.500	1698.53	-16.64	-16.64	-7.25	40°07'06.173"N	104°41'35.660"W	1.87	
1790.00	7.100	199.600	1788.97	-26.13	-26.12	-10.62	40°07'06.079"N	104°41'35.704"W	1.65	
1882.00	8.400	196.500	1880.13	-37.93	-37.92	-14.43	40°07'05.962"N	104°41'35.753"W	1.48	
1978.00	9.900	191.400	1974.91	-52.74	-52.74	-18.06	40°07'05.816"N	104°41'35.799"W	1.77	
2073.00	11.600	187.700	2068.24	-70.22	-70.21	-20.95	40°07'05.643"N	104°41'35.837"W	1.93	
2168.00	12.000	184.800	2161.23	-89.52	-89.52	-23.06	40°07'05.452"N	104°41'35.864"W	0.75	
2263.00	11.900	182.700	2254.17	-109.15	-109.14	-24.35	40°07'05.258"N	104°41'35.880"W	0.47	
2359.00	11.500	183.400	2348.18	-128.59	-128.58	-25.38	40°07'05.066"N	104°41'35.894"W	0.44	
2453.00	11.800	185.400	2440.24	-147.51	-147.50	-26.84	40°07'04.879"N	104°41'35.912"W	0.54	
2548.00	11.700	185.200	2533.25	-166.77	-166.77	-28.63	40°07'04.689"N	104°41'35.935"W	0.11	
2642.00	11.200	181.700	2625.38	-185.39	-185.39	-29.76	40°07'04.505"N	104°41'35.950"W	0.91	
2738.00	11.200	181.400	2719.55	-204.03	-204.02	-30.27	40°07'04.321"N	104°41'35.957"W	0.06	
2833.00	10.700	178.200	2812.82	-222.07	-222.06	-30.21	40°07'04.143"N	104°41'35.956"W	0.83	
2927.00	10.900	180.900	2905.16	-239.68	-239.67	-30.08	40°07'03.969"N	104°41'35.954"W	0.58	
3022.00	11.200	186.200	2998.40	-257.83	-257.83	-31.22	40°07'03.789"N	104°41'35.969"W	1.11	
3116.00	11.200	187.100	3090.61	-275.97	-275.96	-33.33	40°07'03.610"N	104°41'35.996"W	0.19	
3210.00	11.800	186.300	3182.72	-294.58	-294.57	-35.51	40°07'03.426"N	104°41'36.024"W	0.66	
3305.00	11.900	184.600	3275.70	-314.00	-313.99	-37.37	40°07'03.234"N	104°41'36.048"W	0.38	
3399.00	11.100	183.500	3367.81	-332.69	-332.68	-38.70	40°07'03.049"N	104°41'36.065"W	0.88	
3495.00	11.100	187.700	3462.01	-351.07	-351.06	-40.50	40°07'02.868"N	104°41'36.088"W	0.84	
3589.00	10.900	186.800	3554.29	-368.87	-368.86	-42.76	40°07'02.692"N	104°41'36.117"W	0.28	
3683.00	10.600	187.300	3646.64	-386.27	-386.26	-44.91	40°07'02.520"N	104°41'36.145"W	0.33	
3777.00	10.400	185.000	3739.06	-403.30	-403.29	-46.75	40°07'02.352"N	104°41'36.169"W	0.49	
3872.00	10.200	185.600	3832.53	-420.21	-420.20	-48.32	40°07'02.185"N	104°41'36.189"W	0.24	
3967.00	10.000	190.200	3926.06	-436.70	-436.69	-50.60	40°07'02.022"N	104°41'36.218"W	0.87	
4061.00	10.100	193.200	4018.62	-452.76	-452.75	-53.93	40°07'01.863"N	104°41'36.261"W	0.57	
4155.00	10.200	193.100	4111.15	-468.89	-468.88	-57.70	40°07'01.704"N	104°41'36.310"W	0.11	
4250.00	12.100	191.100	4204.35	-486.86	-486.84	-61.52	40°07'01.526"N	104°41'36.359"W	2.04	
4345.00	11.400	191.900	4297.36	-505.81	-505.80	-65.37	40°07'01.339"N	104°41'36.408"W	0.76	



Actual Wellpath Report

BYDALEK 29N-20HZ AWP

Page 3 of 5



REFERENCE WELLPATH IDENTIFICATION

Operator	KERR-MCGEE OIL & GAS ONSHORE LP	Slot	SLOT#07 BYDALEK 29N-20HZ (611'FSL & 1146'FWL, SEC.20)
Area	COLORADO	Well	BYDALEK 29N-20HZ
Field	WELD COUNTY (KERR MCGEE)	Wellbore	BYDALEK 29N-20HZ AWB
Facility	SEC.20-T2N-R65W		

WELLPATH DATA (114 stations) † = interpolated/extrapolated station

MD [ft]	Inclination [°]	Azimuth [°]	TVD [ft]	Vert Sect [ft]	North [ft]	East [ft]	Latitude	Longitude	DLS [°/100ft]	Comments
4439.00	8.900	192.300	4389.88	-522.01	-522.00	-68.84	40°07'01.179"N	104°41'36.453"W	2.66	
4533.00	7.500	198.500	4482.92	-534.94	-534.92	-72.34	40°07'01.051"N	104°41'36.498"W	1.76	
4630.00	7.200	195.100	4579.12	-546.81	-546.79	-75.93	40°07'00.934"N	104°41'36.544"W	0.54	
4725.00	5.500	185.400	4673.54	-557.09	-557.07	-77.91	40°07'00.832"N	104°41'36.570"W	2.11	
4820.00	4.500	175.100	4768.18	-565.34	-565.32	-78.02	40°07'00.750"N	104°41'36.571"W	1.41	
4916.00	2.700	169.000	4863.99	-571.31	-571.29	-77.26	40°07'00.691"N	104°41'36.562"W	1.91	
5010.00	0.750	221.000	4957.94	-573.95	-573.93	-77.24	40°07'00.665"N	104°41'36.561"W	2.46	
5106.00	1.000	144.200	5053.94	-575.10	-575.08	-77.17	40°07'00.654"N	104°41'36.560"W	1.15	
5200.00	0.900	24.600	5147.93	-575.10	-575.08	-76.38	40°07'00.654"N	104°41'36.550"W	1.75	
5295.00	1.100	20.100	5242.91	-573.56	-573.54	-75.76	40°07'00.669"N	104°41'36.542"W	0.23	
5389.00	0.200	334.600	5336.91	-572.57	-572.55	-75.52	40°07'00.679"N	104°41'36.539"W	1.03	
5769.00	0.400	34.100	5716.90	-570.87	-570.85	-75.06	40°07'00.696"N	104°41'36.533"W	0.09	
6151.00	0.200	35.000	6098.90	-569.22	-569.20	-73.93	40°07'00.712"N	104°41'36.519"W	0.05	
6502.00	0.400	357.000	6449.89	-567.49	-567.47	-73.64	40°07'00.729"N	104°41'36.515"W	0.08	
6530.00	0.400	1.400	6477.89	-567.30	-567.28	-73.64	40°07'00.731"N	104°41'36.515"W	0.11	
6577.00	2.900	350.400	6524.87	-565.96	-565.94	-73.84	40°07'00.744"N	104°41'36.517"W	5.34	
6626.00	8.800	352.000	6573.59	-561.02	-561.00	-74.57	40°07'00.793"N	104°41'36.527"W	12.04	
6673.00	14.600	353.900	6619.60	-551.56	-551.55	-75.70	40°07'00.887"N	104°41'36.541"W	12.37	
6722.00	18.800	353.900	6666.52	-537.57	-537.55	-77.19	40°07'01.025"N	104°41'36.561"W	8.57	
6769.00	22.000	354.900	6710.57	-521.26	-521.24	-78.78	40°07'01.186"N	104°41'36.581"W	6.85	
6816.00	25.600	354.300	6753.56	-502.39	-502.37	-80.57	40°07'01.373"N	104°41'36.604"W	7.68	
6863.00	31.600	356.400	6794.81	-479.97	-479.95	-82.36	40°07'01.594"N	104°41'36.627"W	12.94	
6911.00	37.500	358.600	6834.33	-452.79	-452.77	-83.50	40°07'01.863"N	104°41'36.642"W	12.56	
6958.00	43.100	1.200	6870.16	-422.41	-422.39	-83.52	40°07'02.163"N	104°41'36.642"W	12.44	
7005.00	49.400	2.200	6902.65	-388.49	-388.47	-82.49	40°07'02.498"N	104°41'36.629"W	13.49	
7052.00	54.100	2.900	6931.74	-351.63	-351.61	-80.85	40°07'02.862"N	104°41'36.608"W	10.07	
7100.00	59.200	3.800	6958.12	-311.61	-311.60	-78.49	40°07'03.258"N	104°41'36.577"W	10.74	
7147.00	62.600	3.300	6980.97	-270.63	-270.61	-75.95	40°07'03.663"N	104°41'36.545"W	7.29	
7196.00	66.400	3.500	7002.06	-226.49	-226.47	-73.33	40°07'04.099"N	104°41'36.511"W	7.76	
7243.00	69.600	3.300	7019.67	-182.99	-182.98	-70.75	40°07'04.529"N	104°41'36.478"W	6.82	
7292.00	72.100	1.900	7035.74	-136.76	-136.74	-68.65	40°07'04.986"N	104°41'36.451"W	5.77	
7339.00	74.100	1.400	7049.40	-91.81	-91.79	-67.36	40°07'05.430"N	104°41'36.434"W	4.38	
7386.00	78.300	0.600	7060.61	-46.18	-46.17	-66.56	40°07'05.881"N	104°41'36.424"W	9.09	
7433.00	81.000	0.300	7069.05	0.05	0.06	-66.20	40°07'06.338"N	104°41'36.419"W	5.78	
7481.00	84.500	0.600	7075.11	47.65	47.67	-65.83	40°07'06.808"N	104°41'36.414"W	7.32	
7517.00	86.000	0.500	7078.09	83.53	83.54	-65.48	40°07'07.163"N	104°41'36.410"W	4.18	
7541.00	86.600	0.600	7079.64	107.48	107.49	-65.25	40°07'07.399"N	104°41'36.407"W	2.53	
7576.00†	89.056	0.231	7080.97	142.45	142.46	-65.00	40°07'07.745"N	104°41'36.404"W	7.10	7" CASING POINT
7598.00	90.600	0.000	7081.03	164.45	164.46	-64.96	40°07'07.962"N	104°41'36.403"W	7.10	
7694.00	91.400	0.500	7079.36	260.43	260.45	-64.54	40°07'08.911"N	104°41'36.398"W	0.98	
7884.00	90.200	0.000	7076.70	450.41	450.42	-63.71	40°07'10.788"N	104°41'36.387"W	0.68	
7979.00	90.400	358.700	7076.21	545.40	545.41	-64.79	40°07'11.727"N	104°41'36.401"W	1.38	
8169.00	90.700	0.000	7074.38	735.37	735.39	-66.94	40°07'13.604"N	104°41'36.429"W	0.70	
8358.00	90.000	358.700	7073.23	924.35	924.37	-69.08	40°07'15.472"N	104°41'36.456"W	0.78	
8548.00	88.900	358.400	7075.05	1114.28	1114.29	-73.89	40°07'17.349"N	104°41'36.518"W	0.60	



Actual Wellpath Report

BYDALEK 29N-20HZ AWP

Page 4 of 5



REFERENCE WELLPATH IDENTIFICATION

Operator	KERR-MCGEE OIL & GAS ONSHORE LP	Slot	SLOT#07 BYDALEK 29N-20HZ (611'FSL & 1146'FWL, SEC.20)
Area	COLORADO	Well	BYDALEK 29N-20HZ
Field	WELD COUNTY (KERR MCGEE)	Wellbore	BYDALEK 29N-20HZ AWB
Facility	SEC.20-T2N-R65W		

WELLPATH DATA (114 stations)

MD [ft]	Inclination [°]	Azimuth [°]	TVD [ft]	Vert Sect [ft]	North [ft]	East [ft]	Latitude	Longitude	DLS [°/100ft]	Comments
8642.00	88.900	358.300	7076.86	1208.22	1208.24	-76.60	40°07'18.277"N	104°41'36.553"W	0.11	
8832.00	89.600	359.000	7079.34	1398.15	1398.17	-81.07	40°07'20.154"N	104°41'36.611"W	0.52	
9021.00	90.000	359.700	7080.00	1587.13	1587.15	-83.22	40°07'22.021"N	104°41'36.638"W	0.43	
9210.00	89.800	0.600	7080.33	1776.13	1776.15	-82.72	40°07'23.889"N	104°41'36.632"W	0.49	
9401.00	90.200	2.800	7080.33	1967.03	1967.05	-77.06	40°07'25.776"N	104°41'36.559"W	1.17	
9495.00	90.000	3.400	7080.17	2060.90	2060.91	-71.97	40°07'26.703"N	104°41'36.494"W	0.67	
9590.00	90.200	2.400	7080.00	2155.77	2155.79	-67.17	40°07'27.641"N	104°41'36.432"W	1.07	
9781.00	89.300	1.900	7080.84	2346.64	2346.65	-60.00	40°07'29.527"N	104°41'36.339"W	0.54	
9972.00	90.400	2.100	7081.34	2537.52	2537.53	-53.34	40°07'31.413"N	104°41'36.254"W	0.59	
10067.00	90.400	0.600	7080.67	2632.49	2632.50	-51.10	40°07'32.352"N	104°41'36.225"W	1.58	
10162.00	89.800	359.100	7080.51	2727.48	2727.50	-51.35	40°07'33.290"N	104°41'36.228"W	1.70	
10351.00	90.900	359.400	7079.35	2916.46	2916.47	-53.82	40°07'35.158"N	104°41'36.260"W	0.60	
10447.00	89.600	359.800	7078.93	3012.46	3012.47	-54.49	40°07'36.107"N	104°41'36.268"W	1.42	
10541.00	90.400	0.200	7078.93	3106.45	3106.47	-54.49	40°07'37.035"N	104°41'36.268"W	0.95	
10637.00	88.900	359.000	7079.52	3202.45	3202.46	-55.16	40°07'37.984"N	104°41'36.277"W	2.00	
10828.00	88.900	0.200	7083.19	3393.40	3393.42	-56.49	40°07'39.871"N	104°41'36.294"W	0.63	
10923.00	88.700	0.300	7085.18	3488.38	3488.39	-56.08	40°07'40.810"N	104°41'36.289"W	0.24	
11018.00	90.700	0.100	7085.67	3583.37	3583.39	-55.75	40°07'41.748"N	104°41'36.285"W	2.12	
11113.00	90.600	359.900	7084.60	3678.37	3678.38	-55.75	40°07'42.687"N	104°41'36.285"W	0.24	
11208.00	91.100	0.200	7083.19	3773.36	3773.37	-55.67	40°07'43.626"N	104°41'36.284"W	0.61	
11302.00	90.000	359.900	7082.29	3867.35	3867.36	-55.58	40°07'44.555"N	104°41'36.283"W	1.21	
11493.00	89.700	359.900	7082.79	4058.35	4058.36	-55.92	40°07'46.442"N	104°41'36.287"W	0.16	
11611.00	89.200	0.200	7083.92	4176.34	4176.36	-55.81	40°07'47.608"N	104°41'36.286"W	0.49	LAST BHI MWD+IFR SURVEY
11671.00	89.200	0.200	7084.76	4236.34	4236.35	-55.61	40°07'48.201"N	104°41'36.283"W	0.00	PROJECTION TO BIT

HOLE & CASING SECTIONS - Ref Wellbore: BYDALEK 29N-20HZ AWB Ref Wellpath: BYDALEK 29N-20HZ AWP

String/Diameter	Start MD [ft]	End MD [ft]	Interval [ft]	Start TVD [ft]	End TVD [ft]	Start N/S [ft]	Start E/W [ft]	End N/S [ft]	End E/W [ft]
13.5in Open Hole	13.00	1009.00	996.00	13.00	1008.98	0.00	0.00	-2.18	-3.73
9.625in Casing Surface	13.00	1009.00	996.00	13.00	1008.98	0.00	0.00	-2.18	-3.73
8.75in Open Hole	1009.00	7594.00	6585.00	1008.98	7081.06	-2.18	-3.73	160.46	-64.96
7in Casing Intermediate	13.00	7576.00	7563.00	13.00	7080.97	0.00	0.00	142.46	-65.00
6.125in Open Hole	7576.00	11671.00	4095.00	7080.97	7084.76	142.46	-65.00	4236.35	-55.61



Actual Wellpath Report

BYDALEK 29N-20HZ AWP

Page 5 of 5



REFERENCE WELLPATH IDENTIFICATION

Operator	KERR-MCGEE OIL & GAS ONSHORE LP	Slot	SLOT#07 BYDALEK 29N-20HZ (611'FSL & 1146'FWL, SEC.20)
Area	COLORADO	Well	BYDALEK 29N-20HZ
Field	WELD COUNTY (KERR MCGEE)	Wellbore	BYDALEK 29N-20HZ AWB
Facility	SEC.20-T2N-R65W		

TARGETS

Name	MD [ft]	TVD [ft]	North [ft]	East [ft]	Grid East [US ft]	Grid North [US ft]	Latitude	Longitude	Shape
BYDALEK 7 PAD HARD LINES (460' SETBACKS)		-3.00	4249.51	-857.62	3224732.44	1291254.72	40°07'48.331"N	104°41'46.608"W	polygon
BYDALEK 7 PAD SECTION LINES		-3.00	4249.51	-857.61	3224732.44	1291254.72	40°07'48.331"N	104°41'46.608"W	polygon
BYDALEK 29N-20HZ LAND BOX		7000.00	4249.51	-857.61	3224732.44	1291254.72	40°07'48.331"N	104°41'46.608"W	polygon
BYDALEK 29N-20HZ BHL REV-1 (460'FNL & 1255'FWL)		7087.00	4261.54	67.42	3225657.29	1291275.17	40°07'48.450"N	104°41'34.699"W	point
BYDALEK 29N-20HZ BHL REV-2 (460'FNL & 1225'FWL)		7087.00	4261.54	37.42	3225627.29	1291274.89	40°07'48.450"N	104°41'35.085"W	point
BYDALEK 29N-20HZ BHL REV-3 (460'FNL & 1125'FWL)		7087.00	4261.54	-62.58	3225527.30	1291273.98	40°07'48.450"N	104°41'36.373"W	point
PALMER X 20-5 150' RADIUS		7155.00	2906.97	-328.04	3225274.19	1289917.11	40°07'35.064"N	104°41'39.790"W	circle
PALMER X20-20 150' RADIUS		7161.00	2241.69	248.39	3225856.63	1289257.13	40°07'28.490"N	104°41'32.369"W	circle
DOM RED X 20-2D 150' RADIUS		7303.00	3128.03	376.31	3225976.47	1290144.56	40°07'37.249"N	104°41'30.723"W	circle

WELLPATH COMPOSITION - Ref Wellbore: BYDALEK 29N-20HZ AWB Ref Wellpath: BYDALEK 29N-20HZ AWP

Start MD [ft]	End MD [ft]	Positional Uncertainty Model	Log Name/Comment	Wellbore
13.00	913.00	Generic gyro - continuous (Standard)	GYRODATA SURVEYS <113-913>	BYDALEK 29N-20HZ AWB
913.00	7541.00	NaviTrak (MAGCORR,IFR)	BHI MWD+IFR SURVEYS 8 3/4" HOLE <1242-7541>	BYDALEK 29N-20HZ AWB
7541.00	11611.00	NaviTrak (MAGCORR,IFR)	BHI MWD+IFR SURVEYS 6 1/8" HOLE <7598-11611>	BYDALEK 29N-20HZ AWB
11611.00	11671.00	Blind Drilling (std)	Projection to bit	BYDALEK 29N-20HZ AWB