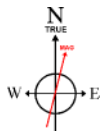


Location:	COLORADO	Slot:	SLOT#05 SHURVIEW 33C-3HZ (2016'FSL & 1191'FEL, SEC.03)
Field:	WELD COUNTY (KERR MCGEE)	Well:	SHURVIEW 33C-3HZ
Facility:	SEC.03-T5N-R67W	Wellbore:	SHURVIEW 33C-3HZ PWB

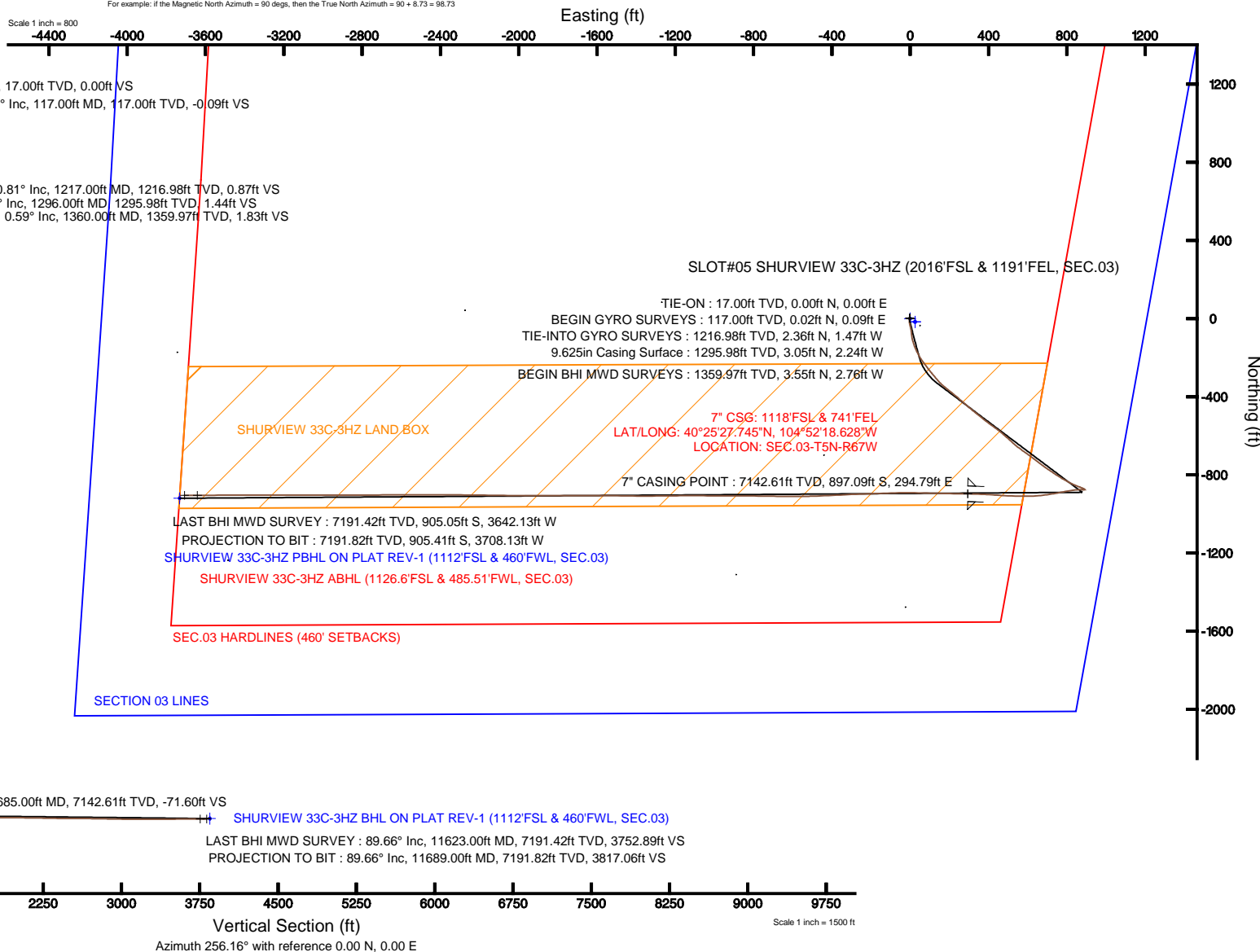
True vertical depths are referenced to XTREME 8 (RKB)	Grid System: NAD83 / Lambert Colorado SP, Northern Zone (501), US feet
Measured depths are referenced to XTREME 8 (RKB)	North Reference: True north
XTREME 8 (RKB) to Mean Sea Level: 4905 feet	Scale: True distance
Mean Sea Level to Mud line (At Slot: SLOT#05 SHURVIEW 33C-3HZ (2016'FSL & 1191'FEL, SEC.03)): 0 feet	Depths are in feet
Coordinates are in feet referenced to Slot	Created by: wslis02 on 5/31/2013



BGGM (1945.0 to 2014.0) Dip: 66.96° Field: 52848.7 nT
Magnetic North is 8.73 degrees East of True North (at 4/3/2013)

To correct azimuth from Magnetic to True add 8.73 degrees
Magnetic North Azimuth = 90 degs. then the True North Azimu

Scale 1 inch = 800





Actual Wellpath Report

SHURVIEW 33C-3HZ AWP

Page 1 of 7



REFERENCE WELLPATH IDENTIFICATION

Operator	KERR-MCGEE OIL & GAS ONSHORE LP	Slot	SLOT#05 SHURVIEW 33C-3HZ (2016'FSL & 1191'FEL, SEC.03)
Area	COLORADO	Well	SHURVIEW 33C-3HZ
Field	WELD COUNTY (KERR MCGEE)	Wellbore	SHURVIEW 33C-3HZ AWB
Facility	SEC.03-T5N-R67W		

REPORT SETUP INFORMATION

Projection System	NAD83 / Lambert Colorado SP, Northern Zone (501), US feet	Software System	WellArchitect® 3.0.2
North Reference	True	User	Wilsjef02
Scale	0.999962	Report Generated	5/31/2013 at 09:32:01
Convergence at slot	0.41° East	Database/Source file	WellArchitectDB/SHURVIEW_33C-3HZ_AWB.xml

WELLPATH LOCATION

	Local coordinates		Grid coordinates		Geographic coordinates	
	North[ft]	East[ft]	Easting[US ft]	Northing[US ft]	Latitude	Longitude
Slot Location	-1436.58	3430.03	3174583.25	1398954.05	40°25'36.610"N	104°52'22.440"W
Facility Reference Pt			3171143.49	1400366.76	40°25'50.808"N	104°53'06.792"W
Field Reference Pt			3197771.84	1268891.29	40°04'09.600"N	104°47'36.000"W

WELLPATH DATUM

Calculation method	Minimum curvature	XTREME 8 (RKB) to Facility Vertical Datum	4905.00ft
Horizontal Reference Pt	Slot	XTREME 8 (RKB) to Mean Sea Level	4905.00ft
Vertical Reference Pt	XTREME 8 (RKB)	XTREME 8 (RKB) to Mud Line at Slot (SLOT#05 SHURVIEW 33C-3HZ (2016'FSL & 1191'FEL, SEC.03))	4905.00ft
MD Reference Pt	XTREME 8 (RKB)	Section Origin	N 0.00, E 0.00 ft
Field Vertical Reference	Mean Sea Level	Section Azimuth	256.28°



Actual Wellpath Report

SHURVIEW 33C-3HZ AWP

Page 2 of 7



REFERENCE WELLPATH IDENTIFICATION

Operator	KERR-MCGEE OIL & GAS ONSHORE LP	Slot	SLOT#05 SHURVIEW 33C-3HZ (2016'FSL & 1191'FEL, SEC.03)
Area	COLORADO	Well	SHURVIEW 33C-3HZ
Field	WELD COUNTY (KERR MCGEE)	Wellbore	SHURVIEW 33C-3HZ AWB
Facility	SEC.03-T5N-R67W		

WELLPATH DATA (149 stations) † = interpolated/extrapolated station

MD [ft]	Inclination [°]	Azimuth [°]	TVD [ft]	Vert Sect [ft]	North [ft]	East [ft]	Latitude	Longitude	DLS [°/100ft]	Comments
0.00†	0.000	78.460	0.00	0.00	0.00	0.00	40°25'36.610"N	104°52'22.440"W	0.00	
17.00	0.000	78.460	17.00	0.00	0.00	0.00	40°25'36.610"N	104°52'22.440"W	0.00	TIE-ON
117.00	0.100	78.460	117.00	-0.09	0.02	0.09	40°25'36.610"N	104°52'22.439"W	0.10	BEGIN GYRO SURVEYS
217.00	0.100	273.990	217.00	-0.09	0.04	0.08	40°25'36.610"N	104°52'22.439"W	0.20	
317.00	0.230	82.950	317.00	-0.21	0.07	0.20	40°25'36.611"N	104°52'22.437"W	0.33	
417.00	0.280	356.870	417.00	-0.45	0.34	0.38	40°25'36.613"N	104°52'22.435"W	0.35	
517.00	0.180	12.290	517.00	-0.57	0.74	0.40	40°25'36.617"N	104°52'22.435"W	0.12	
617.00	0.270	284.610	617.00	-0.43	0.95	0.21	40°25'36.619"N	104°52'22.437"W	0.32	
717.00	0.150	155.900	717.00	-0.24	0.89	0.03	40°25'36.619"N	104°52'22.440"W	0.38	
817.00	0.100	108.010	817.00	-0.34	0.74	0.17	40°25'36.617"N	104°52'22.438"W	0.11	
917.00	0.090	94.970	917.00	-0.49	0.71	0.33	40°25'36.617"N	104°52'22.436"W	0.02	
1017.00	0.270	337.870	1017.00	-0.53	0.92	0.32	40°25'36.619"N	104°52'22.436"W	0.32	
1117.00	0.800	302.820	1116.99	-0.01	1.52	-0.36	40°25'36.625"N	104°52'22.445"W	0.60	
1217.00	0.810	311.280	1216.98	0.87	2.36	-1.47	40°25'36.633"N	104°52'22.459"W	0.12	TIE-INTO GYRO SURVEYS
1360.00	0.590	314.610	1359.97	1.84	3.55	-2.76	40°25'36.645"N	104°52'22.476"W	0.16	BEGIN BHI MWD SURVEYS
1451.00	1.110	214.590	1450.96	2.74	3.15	-3.59	40°25'36.641"N	104°52'22.486"W	1.48	
1541.00	2.140	183.690	1540.93	3.89	0.76	-4.19	40°25'36.617"N	104°52'22.494"W	1.46	
1632.00	3.630	176.080	1631.81	4.89	-3.81	-4.11	40°25'36.572"N	104°52'22.493"W	1.69	
1722.00	4.300	177.270	1721.60	6.02	-10.03	-3.75	40°25'36.511"N	104°52'22.489"W	0.75	
1813.00	5.370	176.740	1812.27	7.45	-17.69	-3.35	40°25'36.435"N	104°52'22.483"W	1.18	
1903.00	6.500	167.220	1901.79	8.29	-26.86	-1.98	40°25'36.345"N	104°52'22.466"W	1.66	
1993.00	7.990	165.530	1991.07	8.30	-37.88	0.71	40°25'36.236"N	104°52'22.431"W	1.67	
2088.00	9.540	169.550	2084.96	8.66	-52.02	3.79	40°25'36.096"N	104°52'22.391"W	1.75	
2173.00	10.430	172.770	2168.67	9.93	-66.58	6.03	40°25'35.952"N	104°52'22.362"W	1.24	
2259.00	13.490	173.620	2252.79	12.09	-84.28	8.13	40°25'35.777"N	104°52'22.335"W	3.56	
2344.00	16.700	167.770	2334.85	13.68	-106.07	11.82	40°25'35.562"N	104°52'22.287"W	4.18	
2429.00	18.960	161.030	2415.77	12.73	-131.07	18.90	40°25'35.315"N	104°52'22.196"W	3.60	
2514.00	19.540	156.710	2496.03	9.11	-157.19	29.01	40°25'35.057"N	104°52'22.065"W	1.81	
2599.00	21.020	150.680	2575.76	2.64	-183.54	42.09	40°25'34.796"N	104°52'21.896"W	3.01	
2685.00	20.820	146.260	2656.10	-6.74	-209.70	58.14	40°25'34.538"N	104°52'21.688"W	1.85	
2770.00	19.570	143.210	2735.87	-17.49	-233.66	75.05	40°25'34.301"N	104°52'21.470"W	1.92	
2855.00	20.130	142.600	2815.82	-28.94	-256.68	92.46	40°25'34.074"N	104°52'21.244"W	0.70	
2940.00	20.650	140.390	2895.50	-41.36	-279.85	110.90	40°25'33.845"N	104°52'21.006"W	1.09	
3026.00	20.550	140.750	2976.00	-54.48	-303.22	130.12	40°25'33.614"N	104°52'20.757"W	0.19	
3111.00	19.790	136.360	3055.79	-68.09	-325.19	149.49	40°25'33.397"N	104°52'20.507"W	1.99	
3196.00	18.790	130.990	3136.02	-83.18	-344.58	169.76	40°25'33.205"N	104°52'20.245"W	2.39	
3281.00	18.370	128.390	3216.59	-99.31	-361.88	190.59	40°25'33.034"N	104°52'19.976"W	1.09	
3367.00	18.130	128.090	3298.27	-115.91	-378.55	211.74	40°25'32.869"N	104°52'19.702"W	0.30	
3452.00	17.510	130.320	3379.19	-131.59	-394.98	231.90	40°25'32.707"N	104°52'19.441"W	1.08	
3537.00	16.780	130.420	3460.41	-146.29	-411.21	250.99	40°25'32.547"N	104°52'19.195"W	0.86	
3623.00	16.620	130.870	3542.79	-160.69	-427.31	269.74	40°25'32.387"N	104°52'18.952"W	0.24	
3708.00	20.330	131.970	3623.39	-176.06	-445.15	289.92	40°25'32.211"N	104°52'18.691"W	4.38	
3793.00	22.080	128.870	3702.64	-194.09	-465.05	313.34	40°25'32.015"N	104°52'18.388"W	2.44	
3879.00	22.890	128.340	3782.10	-214.19	-485.57	339.04	40°25'31.812"N	104°52'18.056"W	0.97	
3964.00	22.030	129.390	3860.65	-233.92	-505.94	364.33	40°25'31.610"N	104°52'17.729"W	1.12	



Actual Wellpath Report

SHURVIEW 33C-3HZ AWP

Page 3 of 7



REFERENCE WELLPATH IDENTIFICATION

Operator	KERR-MCGEE OIL & GAS ONSHORE LP	Slot	SLOT#05 SHURVIEW 33C-3HZ (2016'FSL & 1191'FEL, SEC.03)
Area	COLORADO	Well	SHURVIEW 33C-3HZ
Field	WELD COUNTY (KERR MCGEE)	Wellbore	SHURVIEW 33C-3HZ AWB
Facility	SEC.03-T5N-R67W		

WELLPATH DATA (149 stations)

MD [ft]	Inclination [°]	Azimuth [°]	TVD [ft]	Vert Sect [ft]	North [ft]	East [ft]	Latitude	Longitude	DLS [°/100ft]	Comments
4049.00	18.330	128.080	3940.42	-251.76	-524.30	387.18	40°25'31.429"N	104°52'17.434"W	4.39	
4134.00	15.630	126.150	4021.71	-267.41	-539.31	406.95	40°25'31.281"N	104°52'17.178"W	3.24	
4220.00	14.350	125.030	4104.78	-281.91	-552.26	425.03	40°25'31.153"N	104°52'16.944"W	1.53	
4305.00	14.500	127.590	4187.10	-295.50	-564.80	442.09	40°25'31.029"N	104°52'16.724"W	0.77	
4390.00	15.700	129.130	4269.16	-309.10	-578.54	459.44	40°25'30.893"N	104°52'16.499"W	1.49	
4476.00	15.640	130.760	4351.97	-322.86	-593.46	477.25	40°25'30.746"N	104°52'16.269"W	0.52	
4561.00	16.180	131.250	4433.71	-336.32	-608.75	494.83	40°25'30.595"N	104°52'16.042"W	0.65	
4646.00	17.030	132.740	4515.17	-349.99	-625.00	512.88	40°25'30.434"N	104°52'15.808"W	1.12	
4731.00	17.640	132.410	4596.30	-364.04	-642.14	531.53	40°25'30.265"N	104°52'15.567"W	0.73	
4817.00	18.480	126.840	4678.07	-379.97	-659.10	552.06	40°25'30.097"N	104°52'15.302"W	2.23	
4902.00	18.030	126.050	4758.80	-397.02	-674.92	573.48	40°25'29.941"N	104°52'15.025"W	0.60	
4987.00	16.860	125.740	4839.88	-413.53	-689.86	594.12	40°25'29.793"N	104°52'14.758"W	1.38	
5072.00	15.750	126.350	4921.46	-428.94	-703.90	613.42	40°25'29.654"N	104°52'14.508"W	1.32	
5158.00	16.440	127.230	5004.09	-444.10	-718.18	632.51	40°25'29.513"N	104°52'14.262"W	0.85	
5243.00	15.780	128.070	5085.76	-458.83	-732.58	651.18	40°25'29.371"N	104°52'14.020"W	0.82	
5328.00	15.970	126.090	5167.51	-473.52	-746.60	669.73	40°25'29.232"N	104°52'13.780"W	0.68	
5413.00	16.530	125.380	5249.12	-488.99	-760.49	689.04	40°25'29.095"N	104°52'13.531"W	0.70	
5499.00	16.930	124.290	5331.48	-505.37	-774.62	709.36	40°25'28.955"N	104°52'13.268"W	0.59	
5584.00	14.850	125.600	5413.23	-520.75	-787.94	728.44	40°25'28.824"N	104°52'13.021"W	2.48	
5669.00	17.730	121.810	5494.81	-536.92	-801.10	748.30	40°25'28.694"N	104°52'12.764"W	3.61	
5755.00	19.210	121.570	5576.37	-556.05	-815.41	771.49	40°25'28.552"N	104°52'12.465"W	1.72	
5840.00	16.510	119.560	5657.27	-574.69	-828.70	793.91	40°25'28.421"N	104°52'12.175"W	3.26	
5925.00	12.540	117.750	5739.54	-590.40	-838.96	812.59	40°25'28.320"N	104°52'11.933"W	4.70	
6011.00	11.430	114.940	5823.66	-604.05	-846.90	828.58	40°25'28.241"N	104°52'11.726"W	1.46	
6096.00	10.150	114.560	5907.16	-616.50	-853.56	843.03	40°25'28.175"N	104°52'11.540"W	1.51	
6181.00	8.430	109.540	5991.04	-627.59	-858.76	855.71	40°25'28.124"N	104°52'11.376"W	2.24	
6266.00	7.540	109.430	6075.22	-637.47	-862.70	866.85	40°25'28.085"N	104°52'11.232"W	1.05	
6352.00	6.360	113.680	6160.58	-645.98	-866.49	876.53	40°25'28.048"N	104°52'11.106"W	1.50	
6437.00	4.390	116.040	6245.21	-652.22	-869.81	883.76	40°25'28.015"N	104°52'11.013"W	2.33	
6522.00	2.230	123.810	6330.06	-655.84	-872.16	888.06	40°25'27.992"N	104°52'10.957"W	2.59	
6607.00	1.760	129.760	6415.01	-657.73	-873.91	890.44	40°25'27.974"N	104°52'10.927"W	0.60	
6644.00	1.370	129.500	6451.99	-658.34	-874.56	891.22	40°25'27.968"N	104°52'10.917"W	1.05	
6693.00	1.500	129.780	6500.98	-659.07	-875.34	892.16	40°25'27.960"N	104°52'10.904"W	0.27	
6736.00	2.720	248.600	6543.96	-658.39	-876.07	891.64	40°25'27.953"N	104°52'10.911"W	8.57	
6778.00	6.890	264.670	6585.81	-654.91	-876.67	888.21	40°25'27.947"N	104°52'10.955"W	10.34	
6821.00	9.760	274.580	6628.35	-648.90	-876.62	882.00	40°25'27.947"N	104°52'11.036"W	7.44	
6864.00	11.750	270.890	6670.60	-641.20	-876.26	873.99	40°25'27.951"N	104°52'11.139"W	4.89	
6907.00	14.220	269.650	6712.49	-631.82	-876.22	864.33	40°25'27.951"N	104°52'11.264"W	5.78	
6949.00	18.480	265.940	6752.79	-620.24	-876.73	852.53	40°25'27.946"N	104°52'11.417"W	10.44	
6992.00	22.500	264.010	6793.06	-605.36	-878.07	837.54	40°25'27.933"N	104°52'11.611"W	9.48	
7035.00	24.640	260.040	6832.47	-588.26	-880.48	820.53	40°25'27.909"N	104°52'11.831"W	6.19	
7077.00	28.640	259.450	6870.00	-569.47	-883.84	802.00	40°25'27.876"N	104°52'12.070"W	9.54	
7120.00	33.140	259.020	6906.90	-547.42	-887.96	780.32	40°25'27.835"N	104°52'12.350"W	10.48	
7163.00	38.980	259.110	6941.64	-522.15	-892.76	755.48	40°25'27.788"N	104°52'12.672"W	13.58	
7205.00	43.710	260.360	6973.16	-494.47	-897.69	728.18	40°25'27.739"N	104°52'13.025"W	11.43	



Actual Wellpath Report

SHURVIEW 33C-3HZ AWP

Page 4 of 7



REFERENCE WELLPATH IDENTIFICATION

Operator	KERR-MCGEE OIL & GAS ONSHORE LP	Slot	SLOT#05 SHURVIEW 33C-3HZ (2016'FSL & 1191'FEL, SEC.03)
Area	COLORADO	Well	SHURVIEW 33C-3HZ
Field	WELD COUNTY (KERR MCGEE)	Wellbore	SHURVIEW 33C-3HZ AWB
Facility	SEC.03-T5N-R67W		

WELLPATH DATA (149 stations) † = interpolated/extrapolated station

MD [ft]	Inclination [°]	Azimuth [°]	TVD [ft]	Vert Sect [ft]	North [ft]	East [ft]	Latitude	Longitude	DLS [°/100ft]	Comments
7248.00	47.850	262.680	7003.15	-463.79	-902.21	697.71	40°25'27.695"N	104°52'13.419"W	10.37	
7290.00	52.390	264.010	7030.07	-431.82	-905.93	665.71	40°25'27.658"N	104°52'13.832"W	11.08	
7333.00	57.910	267.450	7054.64	-397.04	-908.52	630.54	40°25'27.632"N	104°52'14.287"W	14.42	
7376.00	63.030	269.780	7075.83	-360.51	-909.41	593.15	40°25'27.624"N	104°52'14.771"W	12.81	
7418.00	67.530	271.080	7093.39	-323.53	-909.11	555.01	40°25'27.626"N	104°52'15.264"W	11.08	
7461.00	71.470	271.860	7108.44	-284.67	-908.08	514.75	40°25'27.637"N	104°52'15.784"W	9.32	
7504.00	74.890	273.580	7120.89	-245.20	-906.12	473.65	40°25'27.656"N	104°52'16.316"W	8.83	
7546.00	78.170	273.960	7130.67	-206.25	-903.43	432.90	40°25'27.683"N	104°52'16.843"W	7.86	
7589.00	83.460	273.020	7137.53	-165.72	-900.85	390.54	40°25'27.708"N	104°52'17.390"W	12.49	
7632.00	87.540	272.540	7140.90	-124.62	-898.77	347.74	40°25'27.729"N	104°52'17.944"W	9.55	
7685.00†	88.761	271.099	7142.61	-73.59	-897.09	294.79	40°25'27.745"N	104°52'18.628"W	3.56	7" CASING POINT
7724.00	89.660	270.040	7143.15	-35.80	-896.70	255.80	40°25'27.749"N	104°52'19.133"W	3.56	
7809.00	89.230	271.250	7143.97	46.54	-895.75	170.81	40°25'27.759"N	104°52'20.231"W	1.51	
7894.00	88.090	271.550	7145.96	128.57	-893.67	85.86	40°25'27.779"N	104°52'21.330"W	1.39	
7979.00	88.710	270.820	7148.33	210.68	-891.91	0.91	40°25'27.796"N	104°52'22.428"W	1.13	
8065.00	88.460	268.030	7150.46	294.39	-892.78	-85.05	40°25'27.788"N	104°52'23.540"W	3.26	
8150.00	89.010	268.040	7152.34	377.58	-895.69	-169.98	40°25'27.759"N	104°52'24.638"W	0.65	
8235.00	89.540	267.800	7153.41	460.83	-898.78	-254.91	40°25'27.729"N	104°52'25.736"W	0.68	
8320.00	89.410	267.290	7154.19	544.19	-902.42	-339.83	40°25'27.693"N	104°52'26.834"W	0.62	
8406.00	88.180	267.280	7156.00	628.59	-906.49	-425.71	40°25'27.652"N	104°52'27.945"W	1.43	
8491.00	89.130	268.240	7157.99	711.86	-909.81	-510.62	40°25'27.620"N	104°52'29.042"W	1.59	
8576.00	89.940	270.420	7158.68	794.66	-910.80	-595.61	40°25'27.610"N	104°52'30.141"W	2.74	
8661.00	89.470	270.720	7159.12	877.02	-909.96	-680.60	40°25'27.618"N	104°52'31.240"W	0.66	
8747.00	90.150	270.970	7159.41	960.26	-908.69	-766.59	40°25'27.631"N	104°52'32.352"W	0.84	
8832.00	88.080	269.960	7160.72	1042.65	-908.00	-851.58	40°25'27.637"N	104°52'33.451"W	2.71	
8917.00	87.620	270.130	7163.91	1125.15	-907.93	-936.52	40°25'27.638"N	104°52'34.549"W	0.58	
9003.00	90.030	270.640	7165.67	1208.53	-907.36	-1022.49	40°25'27.644"N	104°52'35.661"W	2.86	
9088.00	90.000	270.000	7165.65	1290.99	-906.88	-1107.49	40°25'27.648"N	104°52'36.760"W	0.75	
9173.00	87.620	269.490	7167.41	1373.63	-907.26	-1192.46	40°25'27.645"N	104°52'37.859"W	2.86	
9259.00	88.060	269.230	7170.66	1457.34	-908.22	-1278.39	40°25'27.635"N	104°52'38.970"W	0.59	
9344.00	89.900	270.080	7172.17	1540.02	-908.73	-1363.37	40°25'27.630"N	104°52'40.068"W	2.38	
9429.00	89.570	271.290	7172.56	1622.34	-907.71	-1448.37	40°25'27.640"N	104°52'41.167"W	1.48	
9514.00	87.920	270.110	7174.42	1704.64	-906.68	-1533.34	40°25'27.650"N	104°52'42.266"W	2.39	
9600.00	88.950	270.070	7176.77	1788.12	-906.54	-1619.30	40°25'27.651"N	104°52'43.378"W	1.20	
9685.00	89.110	270.020	7178.21	1870.67	-906.47	-1704.29	40°25'27.652"N	104°52'44.477"W	0.20	
9770.00	90.060	270.040	7178.83	1953.23	-906.43	-1789.29	40°25'27.652"N	104°52'45.576"W	1.12	
9856.00	89.110	269.968	7179.45	2036.77	-906.42	-1875.28	40°25'27.652"N	104°52'46.687"W	1.11	
9941.00	89.450	270.090	7180.52	2119.33	-906.38	-1960.28	40°25'27.653"N	104°52'47.786"W	0.42	
10026.00	89.130	270.430	7181.57	2201.80	-905.99	-2045.27	40°25'27.656"N	104°52'48.885"W	0.55	
10112.00	89.080	270.970	7182.91	2285.08	-904.94	-2131.25	40°25'27.667"N	104°52'49.997"W	0.63	
10197.00	88.770	270.680	7184.51	2367.34	-903.72	-2216.23	40°25'27.679"N	104°52'51.096"W	0.50	
10282.00	89.380	270.140	7185.88	2449.76	-903.11	-2301.21	40°25'27.685"N	104°52'52.195"W	0.96	
10367.00	89.850	270.150	7186.45	2532.28	-902.90	-2386.21	40°25'27.687"N	104°52'53.294"W	0.55	
10453.00	90.010	270.260	7186.56	2615.75	-902.59	-2472.21	40°25'27.690"N	104°52'54.406"W	0.23	
10538.00	89.200	269.820	7187.14	2698.31	-902.53	-2557.21	40°25'27.690"N	104°52'55.505"W	1.08	



Actual Wellpath Report

SHURVIEW 33C-3HZ AWP

Page 5 of 7



REFERENCE WELLPATH IDENTIFICATION

Operator	KERR-MCGEE OIL & GAS ONSHORE LP	Slot	SLOT#05 SHURVIEW 33C-3HZ (2016'FSL & 1191'FEL, SEC.03)
Area	COLORADO	Well	SHURVIEW 33C-3HZ
Field	WELD COUNTY (KERR MCGEE)	Wellbore	SHURVIEW 33C-3HZ AWB
Facility	SEC.03-T5N-R67W		

WELLPATH DATA (149 stations)

MD [ft]	Inclination [°]	Azimuth [°]	TVD [ft]	Vert Sect [ft]	North [ft]	East [ft]	Latitude	Longitude	DLS [°/100ft]	Comments
10623.00	89.110	269.760	7188.40	2780.95	-902.84	-2642.20	40°25'27.687"N	104°52'56.604"W	0.13	
10709.00	88.800	269.590	7189.97	2864.59	-903.33	-2728.18	40°25'27.682"N	104°52'57.715"W	0.41	
10794.00	89.110	269.720	7191.52	2947.27	-903.84	-2813.17	40°25'27.677"N	104°52'58.814"W	0.40	
10879.00	89.320	270.060	7192.68	3029.88	-904.00	-2898.16	40°25'27.675"N	104°52'59.913"W	0.47	
10965.00	89.540	269.830	7193.54	3113.44	-904.09	-2984.15	40°25'27.674"N	104°53'01.025"W	0.37	
11050.00	89.660	269.890	7194.13	3196.06	-904.29	-3069.15	40°25'27.672"N	104°53'02.124"W	0.16	
11135.00	90.150	270.210	7194.27	3278.61	-904.22	-3154.15	40°25'27.673"N	104°53'03.223"W	0.69	
11220.00	90.340	270.180	7193.91	3361.12	-903.93	-3239.15	40°25'27.676"N	104°53'04.322"W	0.23	
11306.00	90.650	270.010	7193.16	3444.63	-903.79	-3325.15	40°25'27.677"N	104°53'05.434"W	0.41	
11391.00	90.620	269.810	7192.22	3527.23	-903.92	-3410.14	40°25'27.675"N	104°53'06.533"W	0.24	
11476.00	90.300	269.730	7191.54	3609.88	-904.26	-3495.14	40°25'27.672"N	104°53'07.632"W	0.39	
11561.00	90.060	269.670	7191.27	3692.56	-904.71	-3580.13	40°25'27.667"N	104°53'08.731"W	0.29	
11623.00	89.660	269.690	7191.42	3752.87	-905.05	-3642.13	40°25'27.664"N	104°53'09.533"W	0.65	LAST BHI MWD SURVEY
11689.00	89.660	269.690	7191.82	3817.07	-905.41	-3708.13	40°25'27.660"N	104°53'10.386"W	0.00	PROJECTION TO BIT

HOLE & CASING SECTIONS - Ref Wellbore: SHURVIEW 33C-3HZ AWB Ref Wellpath: SHURVIEW 33C-3HZ AWP

String/Diameter	Start MD [ft]	End MD [ft]	Interval [ft]	Start TVD [ft]	End TVD [ft]	Start N/S [ft]	Start E/W [ft]	End N/S [ft]	End E/W [ft]
13.5in Open Hole	17.00	1296.00	1279.00	17.00	1295.98	0.00	0.00	3.05	-2.24
9.625in Casing Surface	17.00	1296.00	1279.00	17.00	1295.98	0.00	0.00	3.05	-2.24
8.75in Open Hole	1296.00	7697.00	6401.00	1295.98	7142.84	3.05	-2.24	-896.90	282.80
7in Casing Intermediate	17.00	7685.00	7668.00	17.00	7142.61	0.00	0.00	-897.09	294.79
6.125in Open Hole	7685.00	11689.00	4004.00	7142.61	7191.82	-897.09	294.79	-905.41	-3708.13



Actual Wellpath Report

SHURVIEW 33C-3HZ AWP

Page 6 of 7



REFERENCE WELLPATH IDENTIFICATION

Operator	KERR-MCGEE OIL & GAS ONSHORE LP	Slot	SLOT#05 SHURVIEW 33C-3HZ (2016'FSL & 1191'FEL, SEC.03)
Area	COLORADO	Well	SHURVIEW 33C-3HZ
Field	WELD COUNTY (KERR MCGEE)	Wellbore	SHURVIEW 33C-3HZ AWB
Facility	SEC.03-T5N-R67W		

TARGETS

Name	MD [ft]	TVD [ft]	North [ft]	East [ft]	Grid East [US ft]	Grid North [US ft]	Latitude	Longitude	Shape
SECTION 03 LINES		0.00	-16.39	25.06	3174608.42	1398937.84	40°25'36.448"N	104°52'22.116"W	polygon
SHURVIEW 33C-3HZ BHL ON PLAT REV-1 (1112'FSL & 460'FWL, SEC.03)		7187.00	-920.01	-3733.64	3170856.37	1398007.69	40°25'27.516"N	104°53'10.716"W	point
SHURVIEW 33C-3HZ LAND BOX		7200.00	0.00	0.00	3174583.25	1398954.05	40°25'36.610"N	104°52'22.440"W	polygon
SEC.03 HARDLINES (460' SETBACKS)		7205.00	-16.39	25.06	3174608.42	1398937.84	40°25'36.448"N	104°52'22.116"W	polygon

WELLPATH COMPOSITION - Ref Wellbore: SHURVIEW 33C-3HZ AWB Ref Wellpath: SHURVIEW 33C-3HZ AWP

Start MD [ft]	End MD [ft]	Positional Uncertainty Model	Log Name/Comment	Wellbore
17.00	1217.00	Generic gyro - continuous (Standard)	MS GYRODATA SURVEYS <117-1217>	SHURVIEW 33C-3HZ AWB
1217.00	7632.00	NaviTrak (Standard)	BHI MWD SURVEYS 8 3/4" HOLE <1360-7632>	SHURVIEW 33C-3HZ AWB
7632.00	11623.00	OnTrak (Standard)	BHI MWD SURVEYS 6 1/8" HOLE <7724-11623>	SHURVIEW 33C-3HZ AWB
11623.00	11689.00	Blind Drilling (std)	Projection to bit	SHURVIEW 33C-3HZ AWB



Actual Wellpath Report

SHURVIEW 33C-3HZ AWP

Page 7 of 7



REFERENCE WELLPATH IDENTIFICATION

Operator	KERR-MCGEE OIL & GAS ONSHORE LP	Slot	SLOT#05 SHURVIEW 33C-3HZ (2016'FSL & 1191'FEL, SEC.03)
Area	COLORADO	Well	SHURVIEW 33C-3HZ
Field	WELD COUNTY (KERR MCGEE)	Wellbore	SHURVIEW 33C-3HZ AWB
Facility	SEC.03-T5N-R67W		

WELLPATH COMMENTS

MD [ft]	Inclination [°]	Azimuth [°]	TVD [ft]	Comment
17.00	0.000	78.460	17.00	TIE-ON
117.00	0.100	78.460	117.00	BEGIN GYRO SURVEYS
1217.00	0.810	311.280	1216.98	TIE-INTO GYRO SURVEYS
1360.00	0.590	314.610	1359.97	BEGIN BHI MWD SURVEYS
7685.00	88.761	271.099	7142.61	7" CASING POINT
11623.00	89.660	269.690	7191.42	LAST BHI MWD SURVEY
11689.00	89.660	269.690	7191.82	PROJECTION TO BIT