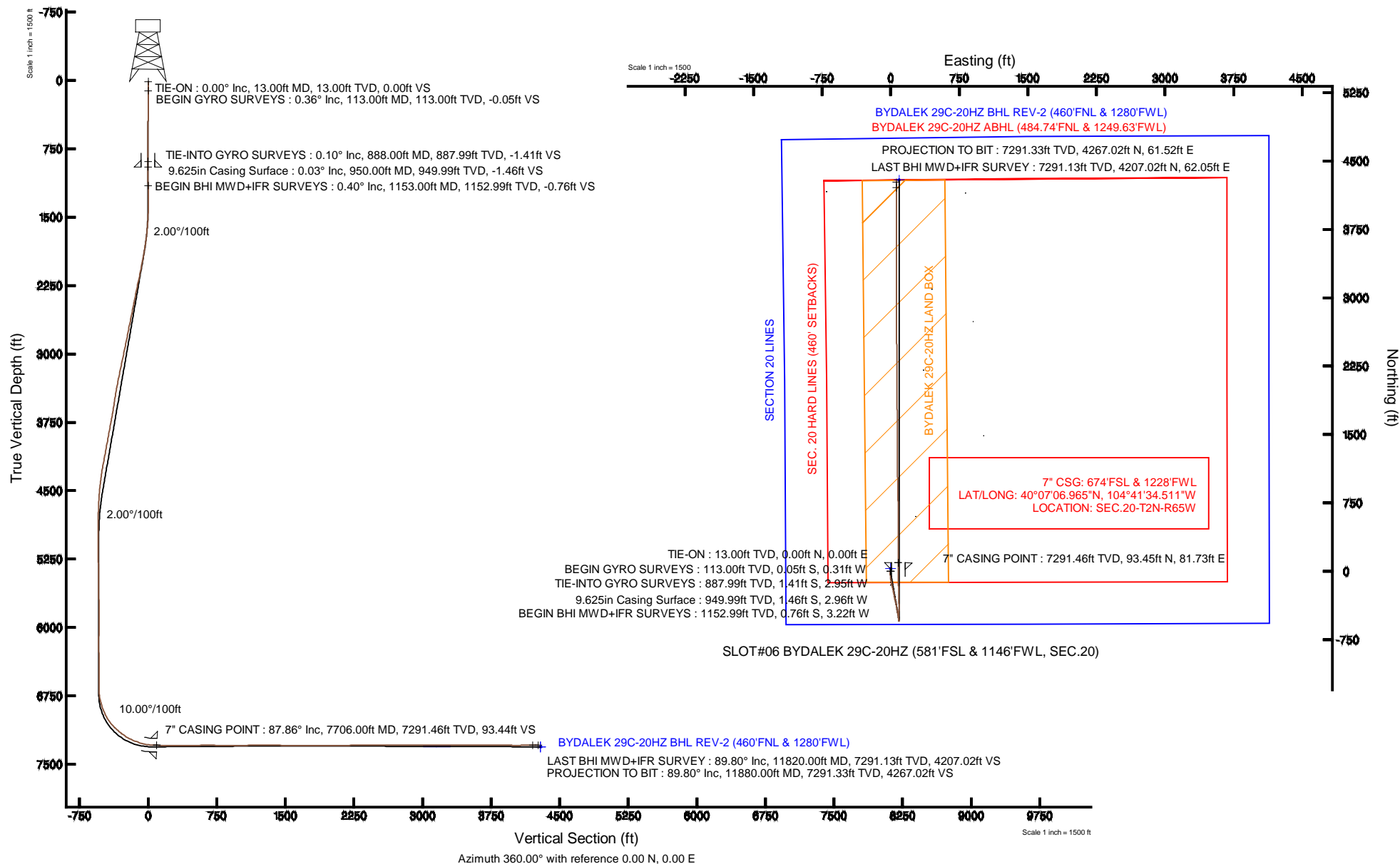


KERR-MCGEE OIL & GAS ONSHORE LP

Location: COLORADO Slot: SLOT#06 BYDALEK 29C-20HZ (581'FSL & 1146'FWL, SEC.20)
 Field: WELD COUNTY (KERR MCGEE) Well: BYDALEK 29C-20HZ
 Facility: SEC.20-T2N-R65W Wellbore: BYDALEK 29C-20HZ PWB

Plot reference wellpath is BYDALEK 29C-20HZ (REV-C.0) PWP

True vertical depths are referenced to ENSIGN 138 (RKB)	Grid System: NAD83 / Lambert Colorado SP, Northern Zone (501), US feet
Measured depths are referenced to ENSIGN 138 (RKB)	North Reference: True north
ENSGIN 138 (RKB) to Mean Sea Level: 4945 feet	Scale: True distance
Mean Sea Level to Mud line (At Slot: SLOT#06 BYDALEK 29C-20HZ (581'FSL & 1146'FWL, SEC.20)): 0 feet	Depths are in feet
Coordinates are in feet referenced to Slot	Created by: wilsje02 on 6/5/2013





Actual Wellpath Report

BYDALEK 29C-20HZ AWP

Page 1 of 6



REFERENCE WELLPATH IDENTIFICATION

Operator	KERR-MCGEE OIL & GAS ONSHORE LP	Slot	SLOT#06 BYDALEK 29C-20HZ (581'FSL & 1146'FWL, SEC.20)
Area	COLORADO	Well	BYDALEK 29C-20HZ
Field	WELD COUNTY (KERR MCGEE)	Wellbore	BYDALEK 29C-20HZ AWB
Facility	SEC.20-T2N-R65W		

REPORT SETUP INFORMATION

Projection System	NAD83 / Lambert Colorado SP, Northern Zone (501), US feet	Software System	WellArchitect® 4.0.0
North Reference	True	User	Wilsjef02
Scale	0.99996	Report Generated	6/5/2013 at 09:51:37
Convergence at slot	n/a	Database/Source file	WellArchitectDB/BYDALEK_29C-20HZ_AWB.xml

WELLPATH LOCATION

	Local coordinates		Grid coordinates		Geographic coordinates	
	North[ft]	East[ft]	Easting[US ft]	Northing[US ft]	Latitude	Longitude
Slot Location	90.06	-0.47	3225629.23	1286983.53	40°07'06.042"N	104°41'35.563"W
Facility Reference Pt			3225630.51	1286893.48	40°07'05.152"N	104°41'35.557"W
Field Reference Pt			3197771.84	1268891.29	40°04'09.600"N	104°47'36.000"W

WELLPATH DATUM

Calculation method	Minimum curvature	ENSIGN 138 (RKB) to Facility Vertical Datum	4945.00ft
Horizontal Reference Pt	Slot	ENSIGN 138 (RKB) to Mean Sea Level	4945.00ft
Vertical Reference Pt	ENSIGN 138 (RKB)	ENSIGN 138 (RKB) to Mud Line at Slot (SLOT#06 BYDALEK 29C-20HZ (581'FSL & 1146'FWL, SEC.20))	4945.00ft
MD Reference Pt	ENSIGN 138 (RKB)	Section Origin	N 0.00, E 0.00 ft
Field Vertical Reference	Mean Sea Level	Section Azimuth	360.00°



Actual Wellpath Report

BYDALEK 29C-20HZ AWP

Page 2 of 6



REFERENCE WELLPATH IDENTIFICATION

Operator	KERR-MCGEE OIL & GAS ONSHORE LP	Slot	SLOT#06 BYDALEK 29C-20HZ (581'FSL & 1146'FWL, SEC.20)
Area	COLORADO	Well	BYDALEK 29C-20HZ
Field	WELD COUNTY (KERR MCGEE)	Wellbore	BYDALEK 29C-20HZ AWB
Facility	SEC.20-T2N-R65W		

WELLPATH DATA (111 stations) † = interpolated/extrapolated station

MD [ft]	Inclination [°]	Azimuth [°]	TVD [ft]	Vert Sect [ft]	North [ft]	East [ft]	Latitude	Longitude	DLS [°/100ft]	Comments
0.00†	0.000	260.200	0.00	0.00	0.00	0.00	40°07'06.042"N	104°41'35.563"W	0.00	
13.00	0.000	260.200	13.00	0.00	0.00	0.00	40°07'06.042"N	104°41'35.563"W	0.00	TIE-ON
113.00	0.360	260.200	113.00	-0.05	-0.05	-0.31	40°07'06.041"N	104°41'35.567"W	0.36	BEGIN GYRO SURVEYS
213.00	0.390	244.160	213.00	-0.26	-0.26	-0.93	40°07'06.039"N	104°41'35.575"W	0.11	
313.00	0.060	138.380	313.00	-0.44	-0.44	-1.20	40°07'06.038"N	104°41'35.578"W	0.41	
413.00	0.570	235.940	412.99	-0.76	-0.76	-1.57	40°07'06.034"N	104°41'35.583"W	0.58	
513.00	0.470	236.890	512.99	-1.26	-1.26	-2.33	40°07'06.030"N	104°41'35.593"W	0.10	
613.00	0.140	183.570	612.99	-1.61	-1.61	-2.68	40°07'06.026"N	104°41'35.598"W	0.40	
713.00	0.140	347.120	712.99	-1.61	-1.61	-2.72	40°07'06.026"N	104°41'35.598"W	0.28	
813.00	0.170	303.710	812.99	-1.41	-1.41	-2.87	40°07'06.028"N	104°41'35.600"W	0.12	
888.00	0.100	175.920	887.99	-1.41	-1.41	-2.95	40°07'06.028"N	104°41'35.601"W	0.33	TIE-INTO GYRO SURVEYS
1153.00	0.400	342.300	1152.99	-0.76	-0.76	-3.22	40°07'06.034"N	104°41'35.604"W	0.19	BEGIN BHI MWD+IFR SURVEYS
1336.00	0.600	327.100	1335.98	0.65	0.65	-3.93	40°07'06.048"N	104°41'35.614"W	0.13	
1427.00	1.400	193.900	1426.97	-0.03	-0.03	-4.46	40°07'06.042"N	104°41'35.620"W	2.05	
1518.00	2.900	181.700	1517.91	-3.41	-3.41	-4.80	40°07'06.008"N	104°41'35.625"W	1.71	
1610.00	4.700	186.300	1609.70	-9.48	-9.48	-5.28	40°07'05.948"N	104°41'35.631"W	1.98	
1701.00	6.600	180.100	1700.25	-18.42	-18.42	-5.70	40°07'05.860"N	104°41'35.636"W	2.19	
1792.00	8.400	175.300	1790.47	-30.27	-30.27	-5.16	40°07'05.743"N	104°41'35.629"W	2.09	
1883.00	9.900	173.300	1880.31	-44.67	-44.67	-3.70	40°07'05.601"N	104°41'35.611"W	1.68	
1982.00	10.700	175.300	1977.72	-62.28	-62.28	-1.96	40°07'05.427"N	104°41'35.588"W	0.89	
2078.00	11.500	171.700	2071.92	-80.63	-80.63	0.15	40°07'05.245"N	104°41'35.561"W	1.10	
2172.00	12.000	170.100	2163.95	-99.53	-99.53	3.19	40°07'05.058"N	104°41'35.522"W	0.63	
2267.00	12.000	169.700	2256.88	-118.98	-118.98	6.65	40°07'04.866"N	104°41'35.477"W	0.09	
2361.00	11.600	167.200	2348.89	-137.81	-137.81	10.49	40°07'04.680"N	104°41'35.428"W	0.69	
2456.00	11.300	165.600	2442.00	-156.14	-156.14	14.92	40°07'04.499"N	104°41'35.371"W	0.46	
2551.00	11.900	165.400	2535.06	-174.63	-174.63	19.71	40°07'04.316"N	104°41'35.309"W	0.63	
2643.00	11.700	167.200	2625.11	-192.91	-192.91	24.16	40°07'04.136"N	104°41'35.252"W	0.46	
2737.00	11.700	167.400	2717.16	-211.50	-211.50	28.35	40°07'03.952"N	104°41'35.198"W	0.04	
2831.00	11.400	168.800	2809.26	-229.92	-229.92	32.24	40°07'03.770"N	104°41'35.148"W	0.44	
2926.00	11.400	170.800	2902.38	-248.40	-248.39	35.56	40°07'03.587"N	104°41'35.105"W	0.42	
3021.00	12.000	170.300	2995.41	-267.40	-267.40	38.73	40°07'03.400"N	104°41'35.065"W	0.64	
3116.00	12.300	170.600	3088.28	-287.12	-287.11	42.04	40°07'03.205"N	104°41'35.022"W	0.32	
3210.00	12.200	165.700	3180.14	-306.62	-306.62	46.13	40°07'03.012"N	104°41'34.969"W	1.11	
3306.00	12.000	162.600	3274.01	-325.97	-325.97	51.62	40°07'02.821"N	104°41'34.899"W	0.71	
3400.00	10.200	166.000	3366.25	-343.38	-343.37	56.56	40°07'02.649"N	104°41'34.835"W	2.04	
3495.00	9.500	171.500	3459.85	-359.29	-359.29	59.75	40°07'02.491"N	104°41'34.794"W	1.23	
3590.00	8.800	170.300	3553.64	-374.21	-374.20	62.14	40°07'02.344"N	104°41'34.763"W	0.76	
3686.00	9.900	169.500	3648.37	-389.56	-389.56	64.88	40°07'02.192"N	104°41'34.728"W	1.15	
3781.00	10.800	168.800	3741.82	-406.33	-406.32	68.09	40°07'02.027"N	104°41'34.687"W	0.96	
3876.00	10.500	171.800	3835.18	-423.62	-423.62	71.06	40°07'01.856"N	104°41'34.648"W	0.66	
3970.00	10.500	171.900	3927.61	-440.58	-440.58	73.49	40°07'01.688"N	104°41'34.617"W	0.02	
4064.00	10.600	171.500	4020.02	-457.61	-457.61	75.97	40°07'01.520"N	104°41'34.585"W	0.13	
4161.00	10.700	169.000	4115.35	-475.28	-475.27	79.01	40°07'01.345"N	104°41'34.546"W	0.49	
4256.00	10.500	169.700	4208.73	-492.45	-492.44	82.24	40°07'01.176"N	104°41'34.504"W	0.25	
4351.00	9.100	170.600	4302.34	-508.38	-508.37	85.01	40°07'01.018"N	104°41'34.469"W	1.48	



Actual Wellpath Report

BYDALEK 29C-20HZ AWP

Page 3 of 6



REFERENCE WELLPATH IDENTIFICATION

Operator	KERR-MCGEE OIL & GAS ONSHORE LP	Slot	SLOT#06 BYDALEK 29C-20HZ (581'FSL & 1146'FWL, SEC.20)
Area	COLORADO	Well	BYDALEK 29C-20HZ
Field	WELD COUNTY (KERR MCGEE)	Wellbore	BYDALEK 29C-20HZ AWB
Facility	SEC.20-T2N-R65W		

WELLPATH DATA (111 stations) † = interpolated/extrapolated station

MD [ft]	Inclination [°]	Azimuth [°]	TVD [ft]	Vert Sect [ft]	North [ft]	East [ft]	Latitude	Longitude	DLS [°/100ft]	Comments
4445.00	6.800	171.000	4395.43	-521.21	-521.20	87.10	40°07'00.891"N	104°41'34.442"W	2.45	
4539.00	5.200	171.800	4488.91	-530.92	-530.92	88.58	40°07'00.795"N	104°41'34.423"W	1.70	
4635.00	3.900	174.800	4584.61	-538.48	-538.47	89.49	40°07'00.721"N	104°41'34.411"W	1.38	
4730.00	2.300	173.300	4679.47	-543.59	-543.59	90.01	40°07'00.670"N	104°41'34.404"W	1.69	
4826.00	1.000	220.300	4775.43	-546.15	-546.14	89.69	40°07'00.645"N	104°41'34.409"W	1.85	
4921.00	0.100	241.000	4870.42	-546.82	-546.81	89.08	40°07'00.638"N	104°41'34.416"W	0.95	
5205.00	0.500	51.000	5154.42	-546.16	-546.15	89.83	40°07'00.645"N	104°41'34.407"W	0.21	
5585.00	1.200	28.500	5534.38	-541.62	-541.61	93.02	40°07'00.690"N	104°41'34.366"W	0.20	
5680.00	0.500	42.600	5629.37	-540.44	-540.43	93.77	40°07'00.701"N	104°41'34.356"W	0.76	
6061.00	0.600	250.900	6010.36	-539.87	-539.86	93.01	40°07'00.707"N	104°41'34.366"W	0.28	
6440.00	0.300	321.700	6389.35	-539.74	-539.73	90.52	40°07'00.708"N	104°41'34.398"W	0.15	
6699.00	0.300	278.200	6648.35	-539.11	-539.10	89.43	40°07'00.715"N	104°41'34.412"W	0.09	
6766.00	3.200	344.700	6715.31	-537.28	-537.27	88.76	40°07'00.733"N	104°41'34.420"W	4.62	
6814.00	9.400	353.200	6763.00	-532.09	-532.08	87.94	40°07'00.784"N	104°41'34.431"W	13.03	
6861.00	14.200	352.700	6808.99	-522.56	-522.55	86.76	40°07'00.878"N	104°41'34.446"W	10.21	
6909.00	17.700	0.100	6855.14	-509.41	-509.41	86.02	40°07'01.008"N	104°41'34.456"W	8.42	
6956.00	21.400	3.800	6899.42	-493.71	-493.70	86.60	40°07'01.163"N	104°41'34.448"W	8.30	
7004.00	25.500	5.200	6943.45	-474.67	-474.66	88.12	40°07'01.351"N	104°41'34.429"W	8.62	
7051.00	30.000	4.500	6985.03	-452.87	-452.86	89.96	40°07'01.567"N	104°41'34.405"W	9.60	
7099.00	35.300	1.300	7025.44	-427.02	-427.02	91.22	40°07'01.822"N	104°41'34.389"W	11.61	
7146.00	40.800	359.600	7062.44	-398.07	-398.06	91.42	40°07'02.108"N	104°41'34.386"W	11.91	
7195.00	45.600	358.900	7098.15	-364.54	-364.53	90.97	40°07'02.440"N	104°41'34.392"W	9.84	
7242.00	48.500	357.800	7130.17	-330.16	-330.15	89.97	40°07'02.779"N	104°41'34.405"W	6.40	
7290.00	51.800	358.300	7160.92	-293.33	-293.32	88.72	40°07'03.143"N	104°41'34.421"W	6.92	
7337.00	55.900	359.100	7188.64	-255.40	-255.39	87.87	40°07'03.518"N	104°41'34.432"W	8.83	
7385.00	61.800	358.700	7213.46	-214.35	-214.34	87.07	40°07'03.924"N	104°41'34.442"W	12.31	
7432.00	66.500	358.200	7233.95	-172.08	-172.07	85.93	40°07'04.342"N	104°41'34.457"W	10.05	
7480.00	70.100	358.500	7251.69	-127.50	-127.50	84.65	40°07'04.782"N	104°41'34.473"W	7.52	
7527.00	71.500	358.800	7267.15	-83.13	-83.12	83.60	40°07'05.221"N	104°41'34.487"W	3.04	
7574.00	78.000	358.600	7279.50	-37.82	-37.82	82.57	40°07'05.668"N	104°41'34.500"W	13.84	
7621.00	84.300	359.700	7286.73	8.59	8.60	81.89	40°07'06.127"N	104°41'34.509"W	13.60	
7660.00	87.400	359.900	7289.55	47.48	47.49	81.75	40°07'06.511"N	104°41'34.511"W	7.97	
7706.00†	87.856	0.041	7291.46	93.44	93.45	81.73	40°07'06.965"N	104°41'34.511"W	1.04	7" CASING POINT
7791.00	88.700	0.300	7294.01	178.40	178.41	81.98	40°07'07.805"N	104°41'34.508"W	1.04	
7888.00	89.900	0.900	7295.19	275.39	275.39	82.99	40°07'08.763"N	104°41'34.495"W	1.38	
7983.00	90.900	0.600	7294.53	370.38	370.38	84.24	40°07'09.702"N	104°41'34.479"W	1.10	
8078.00	90.900	0.400	7293.04	465.36	465.37	85.07	40°07'10.641"N	104°41'34.468"W	0.21	
8173.00	90.500	359.200	7291.88	560.35	560.36	84.74	40°07'11.580"N	104°41'34.472"W	1.33	
8266.00	89.900	359.100	7291.55	653.34	653.35	83.36	40°07'12.498"N	104°41'34.490"W	0.65	
8362.00	89.500	358.500	7292.06	749.32	749.32	81.35	40°07'13.447"N	104°41'34.516"W	0.75	
8457.00	89.900	358.800	7292.55	844.29	844.30	79.11	40°07'14.385"N	104°41'34.545"W	0.53	
8553.00	89.900	358.900	7292.72	940.27	940.28	77.18	40°07'15.334"N	104°41'34.570"W	0.10	
8648.00	90.500	359.200	7292.39	1035.26	1035.26	75.61	40°07'16.273"N	104°41'34.590"W	0.71	
8741.00	90.500	359.200	7291.58	1128.24	1128.25	74.31	40°07'17.191"N	104°41'34.606"W	0.00	
8836.00	91.200	359.400	7290.17	1223.23	1223.23	73.15	40°07'18.130"N	104°41'34.621"W	0.77	



Actual Wellpath Report

BYDALEK 29C-20HZ AWP

Page 4 of 6



REFERENCE WELLPATH IDENTIFICATION

Operator	KERR-MCGEE OIL & GAS ONSHORE LP	Slot	SLOT#06 BYDALEK 29C-20HZ (581'FSL & 1146'FWL, SEC.20)
Area	COLORADO	Well	BYDALEK 29C-20HZ
Field	WELD COUNTY (KERR MCGEE)	Wellbore	BYDALEK 29C-20HZ AWB
Facility	SEC.20-T2N-R65W		

WELLPATH DATA (111 stations)

MD [ft]	Inclination [°]	Azimuth [°]	TVD [ft]	Vert Sect [ft]	North [ft]	East [ft]	Latitude	Longitude	DLS [°/100ft]	Comments
9028.00	88.400	359.800	7290.84	1415.20	1415.21	71.81	40°07'20.027"N	104°41'34.639"W	1.47	
9218.00	90.000	0.300	7293.49	1605.17	1605.18	71.97	40°07'21.905"N	104°41'34.637"W	0.88	
9407.00	89.200	358.700	7294.81	1794.16	1794.16	70.32	40°07'23.772"N	104°41'34.658"W	0.95	
9597.00	90.600	359.900	7295.14	1984.13	1984.14	68.00	40°07'25.649"N	104°41'34.688"W	0.97	
9788.00	91.000	0.100	7292.48	2175.11	2175.12	68.00	40°07'27.537"N	104°41'34.688"W	0.23	
9978.00	90.500	359.300	7289.99	2365.09	2365.10	67.01	40°07'29.414"N	104°41'34.700"W	0.50	
10167.00	89.700	359.600	7289.66	2554.08	2554.09	65.19	40°07'31.282"N	104°41'34.724"W	0.45	
10357.00	90.400	0.400	7289.49	2744.08	2744.09	65.19	40°07'33.159"N	104°41'34.724"W	0.56	
10547.00	89.600	359.400	7289.49	2934.08	2934.08	64.86	40°07'35.037"N	104°41'34.728"W	0.67	
10737.00	89.900	0.000	7290.32	3124.07	3124.08	63.87	40°07'36.914"N	104°41'34.741"W	0.35	
10928.00	89.700	359.600	7290.99	3315.07	3315.07	63.20	40°07'38.802"N	104°41'34.749"W	0.23	
11023.00	90.500	0.600	7290.82	3410.06	3410.07	63.37	40°07'39.741"N	104°41'34.747"W	1.35	
11118.00	90.000	0.100	7290.41	3505.06	3505.07	63.95	40°07'40.679"N	104°41'34.740"W	0.74	
11213.00	89.900	359.900	7290.49	3600.06	3600.07	63.95	40°07'41.618"N	104°41'34.740"W	0.24	
11307.00	89.600	359.000	7290.90	3694.06	3694.06	63.04	40°07'42.547"N	104°41'34.751"W	1.01	
11401.00	89.600	1.000	7291.56	3788.05	3788.05	63.04	40°07'43.476"N	104°41'34.751"W	2.13	
11496.00	90.600	0.000	7291.39	3883.04	3883.05	63.87	40°07'44.415"N	104°41'34.741"W	1.49	
11589.00	88.900	359.000	7291.80	3976.03	3976.04	63.06	40°07'45.334"N	104°41'34.751"W	2.12	
11683.00	90.900	0.200	7291.96	4070.02	4070.03	62.40	40°07'46.262"N	104°41'34.760"W	2.48	
11820.00	89.800	359.500	7291.13	4207.02	4207.02	62.05	40°07'47.616"N	104°41'34.764"W	0.95	LAST BHI MWD+IFR SURVEY
11880.00	89.800	359.500	7291.33	4267.02	4267.02	61.52	40°07'48.209"N	104°41'34.771"W	0.00	PROJECTION TO BIT

HOLE & CASING SECTIONS - Ref Wellbore: BYDALEK 29C-20HZ AWB Ref Wellpath: BYDALEK 29C-20HZ AWP

String/Diameter	Start MD [ft]	End MD [ft]	Interval [ft]	Start TVD [ft]	End TVD [ft]	Start N/S [ft]	Start E/W [ft]	End N/S [ft]	End E/W [ft]
13.5in Open Hole	13.00	950.00	937.00	13.00	949.99	0.00	0.00	-1.46	-2.96
9.625in Casing Surface	13.00	950.00	937.00	13.00	949.99	0.00	0.00	-1.46	-2.96
8.75in Open Hole	950.00	7716.00	6766.00	949.99	7291.82	-1.46	-2.96	103.44	81.74
7in Casing Intermediate	13.00	7706.00	7693.00	13.00	7291.46	0.00	0.00	93.45	81.73
6.125in Open Hole	7706.00	11880.00	4174.00	7291.46	7291.33	93.45	81.73	4267.02	61.52



Actual Wellpath Report

BYDALEK 29C-20HZ AWP

Page 5 of 6



REFERENCE WELLPATH IDENTIFICATION

Operator	KERR-MCGEE OIL & GAS ONSHORE LP	Slot	SLOT#06 BYDALEK 29C-20HZ (581'FSL & 1146'FWL, SEC.20)
Area	COLORADO	Well	BYDALEK 29C-20HZ
Field	WELD COUNTY (KERR MCGEE)	Wellbore	BYDALEK 29C-20HZ AWB
Facility	SEC.20-T2N-R65W		

TARGETS

Name	MD [ft]	TVD [ft]	North [ft]	East [ft]	Grid East [US ft]	Grid North [US ft]	Latitude	Longitude	Shape
BYDALEK 7 PAD HARD LINES (460' SETBACKS)		-3.00	4279.36	-857.93	3224732.44	1291254.72	40°07'48.331"N	104°41'46.608"W	polygon
BYDALEK 7 PAD SECTION LINES		-3.00	4279.36	-857.92	3224732.44	1291254.72	40°07'48.331"N	104°41'46.608"W	polygon
BYDALEK 29C-20HZ LAND BOX		7087.00	29.85	-0.31	3225628.65	1287013.37	40°07'06.337"N	104°41'35.567"W	polygon
PALMER X 20-5 150' RADIUS		7155.00	2936.82	-328.35	3225274.19	1289917.11	40°07'35.064"N	104°41'39.790"W	circle
PALMER X20-20 150' RADIUS		7161.00	2271.54	248.08	3225856.63	1289257.13	40°07'28.490"N	104°41'32.369"W	circle
DOM RED X 20-2D 150' RADIUS		7303.00	3157.88	376.00	3225976.47	1290144.56	40°07'37.249"N	104°41'30.723"W	circle
BYDALEK 29C-20HZ BHL REV-1 (460'FNL & 1310'FWL)		7308.00	4291.80	121.87	3225712.05	1291276.07	40°07'48.454"N	104°41'33.994"W	point
BYDALEK 29C-20HZ BHL REV-2 (460'FNL & 1280'FWL)		7308.00	4291.76	91.89	3225682.07	1291275.76	40°07'48.454"N	104°41'34.380"W	point

WELLPATH COMPOSITION - Ref Wellbore: BYDALEK 29C-20HZ AWB Ref Wellpath: BYDALEK 29C-20HZ AWP

Start MD [ft]	End MD [ft]	Positional Uncertainty Model	Log Name/Comment	Wellbore
13.00	888.00	Generic gyro - continuous (Standard)	GYRODATA SURVEYS <113-888>	BYDALEK 29C-20HZ AWB
888.00	7660.00	NaviTrak (MAGCORR,IFR)	BHI MWD+IFR SURVEYS 8 3/4" HOLE <1153-7660>	BYDALEK 29C-20HZ AWB
7660.00	11820.00	NaviTrak (MAGCORR,IFR)	BHI MWD+IFR SURVEYS 6 1/8" HOLE <7791-11820>	BYDALEK 29C-20HZ AWB
11820.00	11880.00	Blind Drilling (std)	Projection to bit	BYDALEK 29C-20HZ AWB



Actual Wellpath Report

BYDALEK 29C-20HZ AWP

Page 6 of 6



REFERENCE WELLPATH IDENTIFICATION

Operator	KERR-MCGEE OIL & GAS ONSHORE LP	Slot	SLOT#06 BYDALEK 29C-20HZ (581'FSL & 1146'FWL, SEC.20)
Area	COLORADO	Well	BYDALEK 29C-20HZ
Field	WELD COUNTY (KERR MCGEE)	Wellbore	BYDALEK 29C-20HZ AWP
Facility	SEC.20-T2N-R65W		

WELLPATH COMMENTS

MD [ft]	Inclination [°]	Azimuth [°]	TVD [ft]	Comment
13.00	0.000	260.200	13.00	TIE-ON
113.00	0.360	260.200	113.00	BEGIN GYRO SURVEYS
888.00	0.100	175.920	887.99	TIE-INTO GYRO SURVEYS
1153.00	0.400	342.300	1152.99	BEGIN BHI MWD+IFR SURVEYS
7706.00	87.856	0.041	7291.46	7" CASING POINT
11820.00	89.800	359.500	7291.13	LAST BHI MWD+IFR SURVEY
11880.00	89.800	359.500	7291.33	PROJECTION TO BIT