

Synergy Resources

Well Name: **SRC Gilbert 42-14-11CHZ**

Surface Location: SRC Gilbert 42-14-11NHZ Pad Sec.14-T5N-R66W
North American Datum 1983 , US State Plane 1983 , Colorado Northern Zone

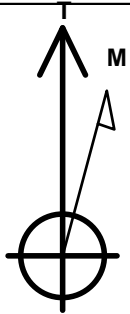
Ground Elevation: 4835.0

+N/-S	+E/-W	Northing	Easting	Latitude	Longitude	Slot
0.0	0.0	1389074.45	3210827.78	40.398941	-104.743019	

RKB-12' WELL @ 4847.0ft (RKB-12')

WELLBORE TARGET DETAILS

Name	TVD	+N/-S	+E/-W	Shape
SHL 2453'FSL & 2245'FEL, Sec.14	1.0	0.0	0.0	Point
BHL 2418'FSL & 1473'FEL, Sec.11	7448.0	5206.4	731.0	Point



Azimuths to True North
Magnetic North: 8.57°

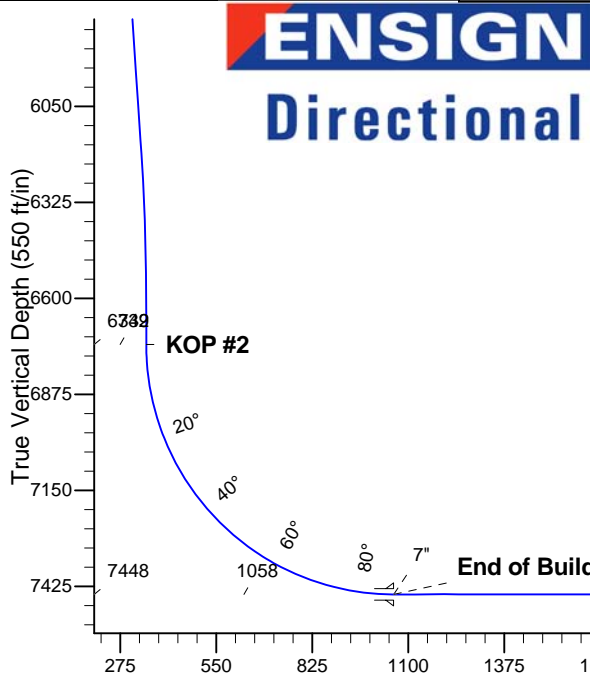
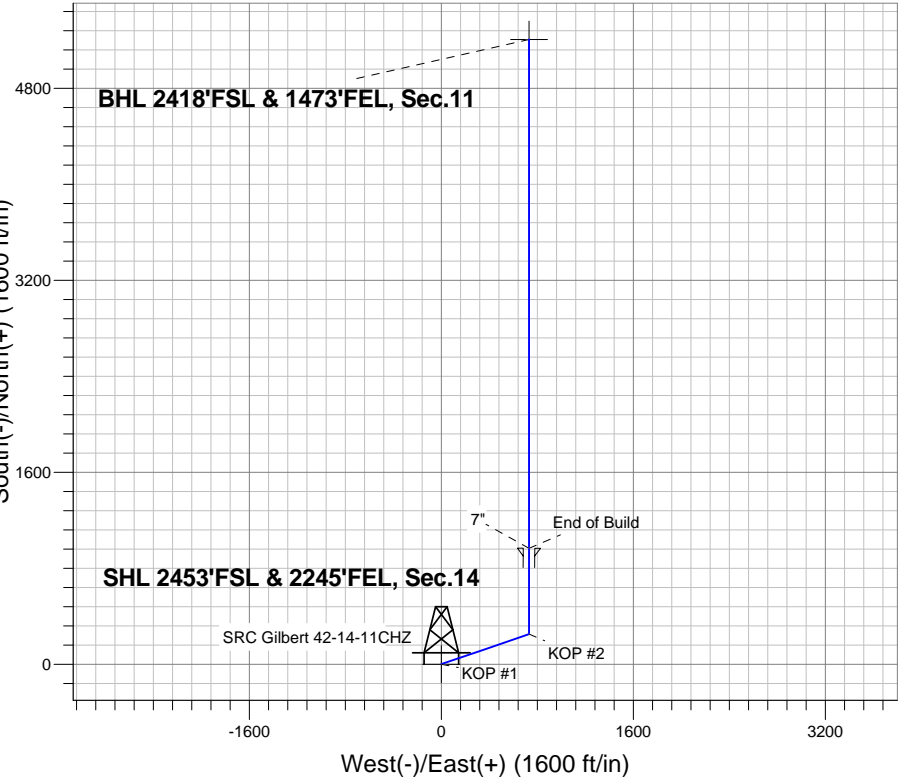
Magnetic Field
Strength: 52909.3srT
Dip Angle: 66.98°
Date: 7/30/2013
Model: IGRF2010

SRC Gilbert 42-14-11NHZ Pad Sec.14-T5N-R66W
SRC Gilbert 42-14-11CHZ
Plan #1 (7-30-13)
16:22, July 30 2013

ANNOTATIONS

TVD	MD	Annotation
1000.0	1000.0	KOP #1
6731.8	6787.6	KOP #2
7448.0	7912.6	End of Build

South(-)/North(+) (1600 ft/in)



SECTION DETAILS

Sec	MD	Inc	Azi	TVD	+N/-S	+E/-W	DLeg	TFace	VSec	Target
1	0.0	0.00	0.00	0.0	0.0	0.0	0.00	0.00	0.0	
2	1000.0	0.00	0.00	1000.0	0.0	0.0	0.00	0.00	0.0	
3	1424.6	8.49	71.12	1423.0	10.2	29.7	2.00	71.12	14.2	
4	6231.2	8.49	71.12	6177.0	239.8	701.3	0.00	0.00	335.0	
5	6655.8	0.00	0.00	6600.0	250.0	731.0	2.00	180.00	349.2	
6	6787.6	0.00	0.00	6731.8	250.0	731.0	0.00	0.00	349.2	
7	7912.6	90.00	0.00	7448.0	966.2	731.0	8.00	0.00	1058.4	
8	12152.8	90.00	0.00	7448.0	5206.4	731.0	0.00	0.00	5257.5	BHL 2418'FSL & 1473'FEL, Sec.11

BHL 2418'FSL & 1473'FEL, Sec.11

Vertical Section at 7.99° (550 ft/in)



Synergy Resources

SEC.14-T5N-R66W

SRC Gilbert 42-14-11NHZ Pad Sec.14-T5N-R66W

SRC Gilbert 42-14-11CHZ

Wellbore #1

Plan: Plan #1 (7-30-13)

Standard Planning Report

30 July, 2013

Plan Sections										
Measured Depth (ft)	Inclination (°)	Azimuth (°)	Vertical Depth (ft)	+N/-S (ft)	+E/-W (ft)	Dogleg Rate (°/100ft)	Build Rate (°/100ft)	Turn Rate (°/100ft)	TFO (°)	Target
0.0	0.00	0.00	0.0	0.0	0.0	0.00	0.00	0.00	0.00	
1,000.0	0.00	0.00	1,000.0	0.0	0.0	0.00	0.00	0.00	0.00	
1,424.6	8.49	71.12	1,423.0	10.2	29.7	2.00	2.00	0.00	71.12	
6,231.2	8.49	71.12	6,177.0	239.8	701.3	0.00	0.00	0.00	0.00	
6,655.8	0.00	0.00	6,600.0	250.0	731.0	2.00	-2.00	0.00	180.00	
6,787.6	0.00	0.00	6,731.8	250.0	731.0	0.00	0.00	0.00	0.00	
7,912.6	90.00	0.00	7,448.0	966.2	731.0	8.00	8.00	0.00	0.00	
12,152.8	90.00	0.00	7,448.0	5,206.4	731.0	0.00	0.00	0.00	0.00	BHL 2418'FSL & 14

Database:	Landmark	Local Co-ordinate Reference:	Well SRC Gilbert 42-14-11CHZ
Company:	Synergy Resources	TVD Reference:	WELL @ 4847.0ft (RKB-12')
Project:	SEC.14-T5N-R66W	MD Reference:	WELL @ 4847.0ft (RKB-12')
Site:	SRC Gilbert 42-14-11NHZ Pad	North Reference:	True
	Sec.14-T5N-R66W		
Well:	SRC Gilbert 42-14-11CHZ	Survey Calculation Method:	Minimum Curvature
Wellbore:	Wellbore #1		
Design:	Plan #1 (7-30-13)		

Planned Survey									
Measured Depth (ft)	Inclination (°)	Azimuth (°)	Vertical Depth (ft)	+N/-S (ft)	+E/-W (ft)	Vertical Section (ft)	Dogleg Rate (°/100ft)	Build Rate (°/100ft)	Turn Rate (°/100ft)
0.0	0.00	0.00	0.0	0.0	0.0	0.0	0.00	0.00	0.00
1.0	0.00	0.00	1.0	0.0	0.0	0.0	0.00	0.00	0.00
SHL 2453'FSL & 2245'FEL, Sec.14									
100.0	0.00	0.00	100.0	0.0	0.0	0.0	0.00	0.00	0.00
200.0	0.00	0.00	200.0	0.0	0.0	0.0	0.00	0.00	0.00
300.0	0.00	0.00	300.0	0.0	0.0	0.0	0.00	0.00	0.00
400.0	0.00	0.00	400.0	0.0	0.0	0.0	0.00	0.00	0.00
500.0	0.00	0.00	500.0	0.0	0.0	0.0	0.00	0.00	0.00
600.0	0.00	0.00	600.0	0.0	0.0	0.0	0.00	0.00	0.00
700.0	0.00	0.00	700.0	0.0	0.0	0.0	0.00	0.00	0.00
800.0	0.00	0.00	800.0	0.0	0.0	0.0	0.00	0.00	0.00
900.0	0.00	0.00	900.0	0.0	0.0	0.0	0.00	0.00	0.00
1,000.0	0.00	0.00	1,000.0	0.0	0.0	0.0	0.00	0.00	0.00
KOP #1									
1,100.0	2.00	71.12	1,100.0	0.6	1.7	0.8	2.00	2.00	0.00
1,200.0	4.00	71.12	1,199.8	2.3	6.6	3.2	2.00	2.00	0.00
1,300.0	6.00	71.12	1,299.5	5.1	14.8	7.1	2.00	2.00	0.00
1,400.0	8.00	71.12	1,398.7	9.0	26.4	12.6	2.00	2.00	0.00
1,424.6	8.49	71.12	1,423.0	10.2	29.7	14.2	2.00	2.00	0.00
1,500.0	8.49	71.12	1,497.6	13.8	40.3	19.2	0.00	0.00	0.00
1,600.0	8.49	71.12	1,596.5	18.5	54.2	25.9	0.00	0.00	0.00
1,700.0	8.49	71.12	1,695.4	23.3	68.2	32.6	0.00	0.00	0.00
1,800.0	8.49	71.12	1,794.3	28.1	82.2	39.3	0.00	0.00	0.00
1,900.0	8.49	71.12	1,893.2	32.9	96.1	45.9	0.00	0.00	0.00
2,000.0	8.49	71.12	1,992.1	37.7	110.1	52.6	0.00	0.00	0.00
2,100.0	8.49	71.12	2,091.0	42.4	124.1	59.3	0.00	0.00	0.00
2,200.0	8.49	71.12	2,189.9	47.2	138.1	65.9	0.00	0.00	0.00
2,300.0	8.49	71.12	2,288.9	52.0	152.0	72.6	0.00	0.00	0.00
2,400.0	8.49	71.12	2,387.8	56.8	166.0	79.3	0.00	0.00	0.00
2,500.0	8.49	71.12	2,486.7	61.5	180.0	86.0	0.00	0.00	0.00
2,600.0	8.49	71.12	2,585.6	66.3	193.9	92.6	0.00	0.00	0.00
2,700.0	8.49	71.12	2,684.5	71.1	207.9	99.3	0.00	0.00	0.00
2,800.0	8.49	71.12	2,783.4	75.9	221.9	106.0	0.00	0.00	0.00
2,900.0	8.49	71.12	2,882.3	80.7	235.8	112.7	0.00	0.00	0.00
3,000.0	8.49	71.12	2,981.2	85.4	249.8	119.3	0.00	0.00	0.00
3,100.0	8.49	71.12	3,080.1	90.2	263.8	126.0	0.00	0.00	0.00
3,200.0	8.49	71.12	3,179.0	95.0	277.8	132.7	0.00	0.00	0.00
3,300.0	8.49	71.12	3,277.9	99.8	291.7	139.4	0.00	0.00	0.00
3,400.0	8.49	71.12	3,376.8	104.6	305.7	146.0	0.00	0.00	0.00
3,500.0	8.49	71.12	3,475.7	109.3	319.7	152.7	0.00	0.00	0.00
3,600.0	8.49	71.12	3,574.6	114.1	333.6	159.4	0.00	0.00	0.00
3,700.0	8.49	71.12	3,673.5	118.9	347.6	166.1	0.00	0.00	0.00
3,800.0	8.49	71.12	3,772.4	123.7	361.6	172.7	0.00	0.00	0.00
3,900.0	8.49	71.12	3,871.3	128.4	375.6	179.4	0.00	0.00	0.00
4,000.0	8.49	71.12	3,970.2	133.2	389.5	186.1	0.00	0.00	0.00
4,100.0	8.49	71.12	4,069.1	138.0	403.5	192.8	0.00	0.00	0.00
4,200.0	8.49	71.12	4,168.0	142.8	417.5	199.4	0.00	0.00	0.00
4,300.0	8.49	71.12	4,266.9	147.6	431.4	206.1	0.00	0.00	0.00
4,400.0	8.49	71.12	4,365.8	152.3	445.4	212.8	0.00	0.00	0.00
4,500.0	8.49	71.12	4,464.7	157.1	459.4	219.5	0.00	0.00	0.00
4,600.0	8.49	71.12	4,563.6	161.9	473.4	226.1	0.00	0.00	0.00
4,700.0	8.49	71.12	4,662.5	166.7	487.3	232.8	0.00	0.00	0.00
4,800.0	8.49	71.12	4,761.4	171.4	501.3	239.5	0.00	0.00	0.00

Database:	Landmark	Local Co-ordinate Reference:	Well SRC Gilbert 42-14-11CHZ
Company:	Synergy Resources	TVD Reference:	WELL @ 4847.0ft (RKB-12')
Project:	SEC.14-T5N-R66W	MD Reference:	WELL @ 4847.0ft (RKB-12')
Site:	SRC Gilbert 42-14-11NHZ Pad	North Reference:	True
	Sec.14-T5N-R66W		
Well:	SRC Gilbert 42-14-11CHZ	Survey Calculation Method:	Minimum Curvature
Wellbore:	Wellbore #1		
Design:	Plan #1 (7-30-13)		

Planned Survey									
Measured Depth (ft)	Inclination (°)	Azimuth (°)	Vertical Depth (ft)	+N/-S (ft)	+E/-W (ft)	Vertical Section (ft)	Dogleg Rate (°/100ft)	Build Rate (°/100ft)	Turn Rate (°/100ft)
4,900.0	8.49	71.12	4,860.4	176.2	515.3	246.2	0.00	0.00	0.00
5,000.0	8.49	71.12	4,959.3	181.0	529.2	252.8	0.00	0.00	0.00
5,100.0	8.49	71.12	5,058.2	185.8	543.2	259.5	0.00	0.00	0.00
5,200.0	8.49	71.12	5,157.1	190.6	557.2	266.2	0.00	0.00	0.00
5,300.0	8.49	71.12	5,256.0	195.3	571.2	272.9	0.00	0.00	0.00
5,400.0	8.49	71.12	5,354.9	200.1	585.1	279.5	0.00	0.00	0.00
5,500.0	8.49	71.12	5,453.8	204.9	599.1	286.2	0.00	0.00	0.00
5,600.0	8.49	71.12	5,552.7	209.7	613.1	292.9	0.00	0.00	0.00
5,700.0	8.49	71.12	5,651.6	214.5	627.0	299.6	0.00	0.00	0.00
5,800.0	8.49	71.12	5,750.5	219.2	641.0	306.2	0.00	0.00	0.00
5,900.0	8.49	71.12	5,849.4	224.0	655.0	312.9	0.00	0.00	0.00
6,000.0	8.49	71.12	5,948.3	228.8	669.0	319.6	0.00	0.00	0.00
6,100.0	8.49	71.12	6,047.2	233.6	682.9	326.3	0.00	0.00	0.00
6,200.0	8.49	71.12	6,146.1	238.3	696.9	332.9	0.00	0.00	0.00
6,231.2	8.49	71.12	6,177.0	239.8	701.3	335.0	0.00	0.00	0.00
6,300.0	7.12	71.12	6,245.1	242.9	710.1	339.2	2.00	-2.00	0.00
6,400.0	5.12	71.12	6,344.5	246.3	720.2	344.0	2.00	-2.00	0.00
6,500.0	3.12	71.12	6,444.3	248.6	727.0	347.3	2.00	-2.00	0.00
6,600.0	1.12	71.12	6,544.2	249.8	730.5	349.0	2.00	-2.00	0.00
6,655.8	0.00	0.00	6,600.0	250.0	731.0	349.2	2.00	-2.00	0.00
6,700.0	0.00	0.00	6,644.2	250.0	731.0	349.2	0.00	0.00	0.00
6,787.6	0.00	0.00	6,731.8	250.0	731.0	349.2	0.00	0.00	0.00
KOP #2									
6,800.0	0.99	0.00	6,744.2	250.1	731.0	349.3	8.00	8.00	0.00
6,900.0	8.99	0.00	6,843.7	258.8	731.0	357.9	8.00	8.00	0.00
7,000.0	16.99	0.00	6,941.1	281.3	731.0	380.2	8.00	8.00	0.00
7,100.0	24.99	0.00	7,034.4	317.1	731.0	415.6	8.00	8.00	0.00
7,200.0	32.99	0.00	7,121.8	365.5	731.0	463.6	8.00	8.00	0.00
7,300.0	40.99	0.00	7,201.6	425.6	731.0	523.1	8.00	8.00	0.00
7,400.0	48.99	0.00	7,272.3	496.3	731.0	593.1	8.00	8.00	0.00
7,500.0	56.99	0.00	7,332.4	576.0	731.0	672.1	8.00	8.00	0.00
7,600.0	64.99	0.00	7,380.9	663.4	731.0	758.6	8.00	8.00	0.00
7,700.0	72.99	0.00	7,416.7	756.7	731.0	851.0	8.00	8.00	0.00
7,800.0	80.99	0.00	7,439.2	854.1	731.0	947.4	8.00	8.00	0.00
7,900.0	88.99	0.00	7,447.9	953.6	731.0	1,046.0	8.00	8.00	0.00
7,912.6	90.00	0.00	7,448.0	966.2	731.0	1,058.4	8.00	8.00	0.00
End of Build - 7"									
8,000.0	90.00	0.00	7,448.0	1,053.6	731.0	1,145.0	0.00	0.00	0.00
8,100.0	90.00	0.00	7,448.0	1,153.6	731.0	1,244.0	0.00	0.00	0.00
8,200.0	90.00	0.00	7,448.0	1,253.6	731.0	1,343.1	0.00	0.00	0.00
8,300.0	90.00	0.00	7,448.0	1,353.6	731.0	1,442.1	0.00	0.00	0.00
8,400.0	90.00	0.00	7,448.0	1,453.6	731.0	1,541.1	0.00	0.00	0.00
8,500.0	90.00	0.00	7,448.0	1,553.6	731.0	1,640.1	0.00	0.00	0.00
8,600.0	90.00	0.00	7,448.0	1,653.6	731.0	1,739.2	0.00	0.00	0.00
8,700.0	90.00	0.00	7,448.0	1,753.6	731.0	1,838.2	0.00	0.00	0.00
8,800.0	90.00	0.00	7,448.0	1,853.6	731.0	1,937.2	0.00	0.00	0.00
8,900.0	90.00	0.00	7,448.0	1,953.6	731.0	2,036.3	0.00	0.00	0.00
9,000.0	90.00	0.00	7,448.0	2,053.6	731.0	2,135.3	0.00	0.00	0.00
9,100.0	90.00	0.00	7,448.0	2,153.6	731.0	2,234.3	0.00	0.00	0.00
9,200.0	90.00	0.00	7,448.0	2,253.6	731.0	2,333.3	0.00	0.00	0.00
9,300.0	90.00	0.00	7,448.0	2,353.6	731.0	2,432.4	0.00	0.00	0.00
9,400.0	90.00	0.00	7,448.0	2,453.6	731.0	2,531.4	0.00	0.00	0.00
9,500.0	90.00	0.00	7,448.0	2,553.6	731.0	2,630.4	0.00	0.00	0.00

Database:	Landmark	Local Co-ordinate Reference:	Well SRC Gilbert 42-14-11CHZ
Company:	Synergy Resources	TVD Reference:	WELL @ 4847.0ft (RKB-12')
Project:	SEC.14-T5N-R66W	MD Reference:	WELL @ 4847.0ft (RKB-12')
Site:	SRC Gilbert 42-14-11NHZ Pad	North Reference:	True
	Sec.14-T5N-R66W		
Well:	SRC Gilbert 42-14-11CHZ	Survey Calculation Method:	Minimum Curvature
Wellbore:	Wellbore #1		
Design:	Plan #1 (7-30-13)		

Planned Survey									
Measured Depth (ft)	Inclination (°)	Azimuth (°)	Vertical Depth (ft)	+N/-S (ft)	+E/-W (ft)	Vertical Section (ft)	Dogleg Rate (°/100ft)	Build Rate (°/100ft)	Turn Rate (°/100ft)
9,600.0	90.00	0.00	7,448.0	2,653.6	731.0	2,729.5	0.00	0.00	0.00
9,700.0	90.00	0.00	7,448.0	2,753.6	731.0	2,828.5	0.00	0.00	0.00
9,800.0	90.00	0.00	7,448.0	2,853.6	731.0	2,927.5	0.00	0.00	0.00
9,900.0	90.00	0.00	7,448.0	2,953.6	731.0	3,026.5	0.00	0.00	0.00
10,000.0	90.00	0.00	7,448.0	3,053.6	731.0	3,125.6	0.00	0.00	0.00
10,100.0	90.00	0.00	7,448.0	3,153.6	731.0	3,224.6	0.00	0.00	0.00
10,200.0	90.00	0.00	7,448.0	3,253.6	731.0	3,323.6	0.00	0.00	0.00
10,300.0	90.00	0.00	7,448.0	3,353.6	731.0	3,422.7	0.00	0.00	0.00
10,400.0	90.00	0.00	7,448.0	3,453.6	731.0	3,521.7	0.00	0.00	0.00
10,500.0	90.00	0.00	7,448.0	3,553.6	731.0	3,620.7	0.00	0.00	0.00
10,600.0	90.00	0.00	7,448.0	3,653.6	731.0	3,719.7	0.00	0.00	0.00
10,700.0	90.00	0.00	7,448.0	3,753.6	731.0	3,818.8	0.00	0.00	0.00
10,800.0	90.00	0.00	7,448.0	3,853.6	731.0	3,917.8	0.00	0.00	0.00
10,900.0	90.00	0.00	7,448.0	3,953.6	731.0	4,016.8	0.00	0.00	0.00
11,000.0	90.00	0.00	7,448.0	4,053.6	731.0	4,115.9	0.00	0.00	0.00
11,100.0	90.00	0.00	7,448.0	4,153.6	731.0	4,214.9	0.00	0.00	0.00
11,200.0	90.00	0.00	7,448.0	4,253.6	731.0	4,313.9	0.00	0.00	0.00
11,300.0	90.00	0.00	7,448.0	4,353.6	731.0	4,412.9	0.00	0.00	0.00
11,400.0	90.00	0.00	7,448.0	4,453.6	731.0	4,512.0	0.00	0.00	0.00
11,500.0	90.00	0.00	7,448.0	4,553.6	731.0	4,611.0	0.00	0.00	0.00
11,600.0	90.00	0.00	7,448.0	4,653.6	731.0	4,710.0	0.00	0.00	0.00
11,700.0	90.00	0.00	7,448.0	4,753.6	731.0	4,809.1	0.00	0.00	0.00
11,800.0	90.00	0.00	7,448.0	4,853.6	731.0	4,908.1	0.00	0.00	0.00
11,900.0	90.00	0.00	7,448.0	4,953.6	731.0	5,007.1	0.00	0.00	0.00
12,000.0	90.00	0.00	7,448.0	5,053.6	731.0	5,106.2	0.00	0.00	0.00
12,100.0	90.00	0.00	7,448.0	5,153.6	731.0	5,205.2	0.00	0.00	0.00
12,152.8	90.00	0.00	7,448.0	5,206.4	731.0	5,257.5	0.00	0.00	0.00
BHL 2418'FSL & 1473'FEL, Sec.11									

Targets									
Target Name	Dip Angle (°)	Dip Dir. (°)	TVD (ft)	+N/-S (ft)	+E/-W (ft)	Northing (ft)	Easting (ft)	Latitude	Longitude
BHL 2418'FSL & 1473'FEL - hit/miss target - Shape - Point	0.00	0.00	7,448.0	5,206.4	731.0	1,394,286.72	3,211,514.26	40.413232	-104.740394
SHL 2453'FSL & 2245'FEL - plan hits target center - Point	0.00	0.00	1.0	0.0	0.0	1,389,074.48	3,210,827.78	40.398941	-104.743019

Casing Points				
Measured Depth (ft)	Vertical Depth (ft)	Name	Casing Diameter (")	Hole Diameter (")
7,912.6	7,448.0	7"	7	7-1/2

Database:	Landmark	Local Co-ordinate Reference:	Well SRC Gilbert 42-14-11CHZ
Company:	Synergy Resources	TVD Reference:	WELL @ 4847.0ft (RKB-12')
Project:	SEC.14-T5N-R66W	MD Reference:	WELL @ 4847.0ft (RKB-12')
Site:	SRC Gilbert 42-14-11NHZ Pad Sec.14-T5N-R66W	North Reference:	True
Well:	SRC Gilbert 42-14-11CHZ	Survey Calculation Method:	Minimum Curvature
Wellbore:	Wellbore #1		
Design:	Plan #1 (7-30-13)		

Plan Annotations				
Measured Depth (ft)	Vertical Depth (ft)	Local Coordinates		Comment
		+N/-S (ft)	+E/-W (ft)	
1,000.0	1,000.0	0.0	0.0	KOP #1
6,787.6	6,731.8	250.0	731.0	KOP #2
7,912.6	7,448.0	966.2	731.0	End of Build