

# Synergy Resources

Well Name: **SRC Gilbert 0-14-11CHZ**

Surface Location: SRC Gilbert 42-14-11NHZ Pad Sec.14-T5N-R66W  
North American Datum 1983 , US State Plane 1983 , Colorado Northern Zone

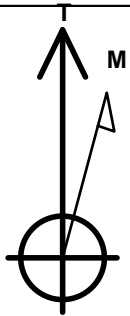
Ground Elevation: 4835.0

+N/-S	+E/-W	Northing	Easting	Latitude	Longitude	Slot
0.0	0.0	1389104.71	3210827.80	40.399024	-104.743018	

RKB-12' WELL @ 4847.0ft (RKB-12')

## WELLBORE TARGET DETAILS

Name	TVD	+N/-S	+E/-W	Shape
SHL 2483'FSL & 2245'FEL, Sec.14	1.0	0.0	0.0	Point
BHL 2358'FSL & 2578'FEL, Sec.11	7448.0	5139.0	-373.7	Point



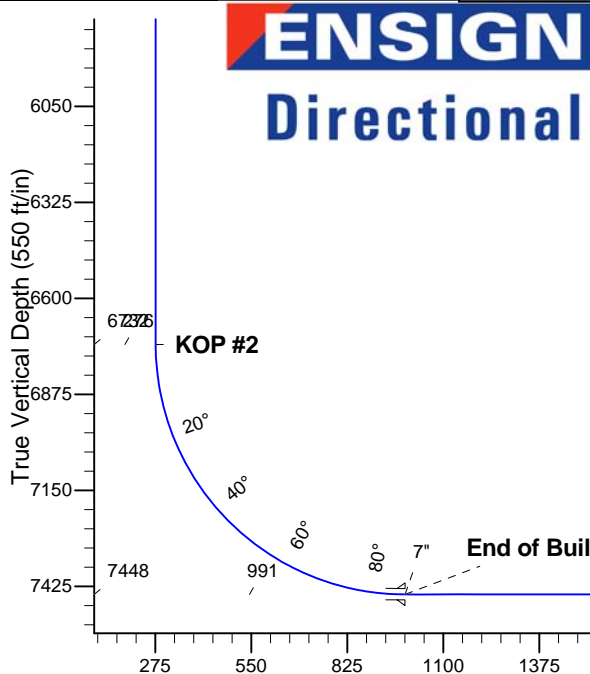
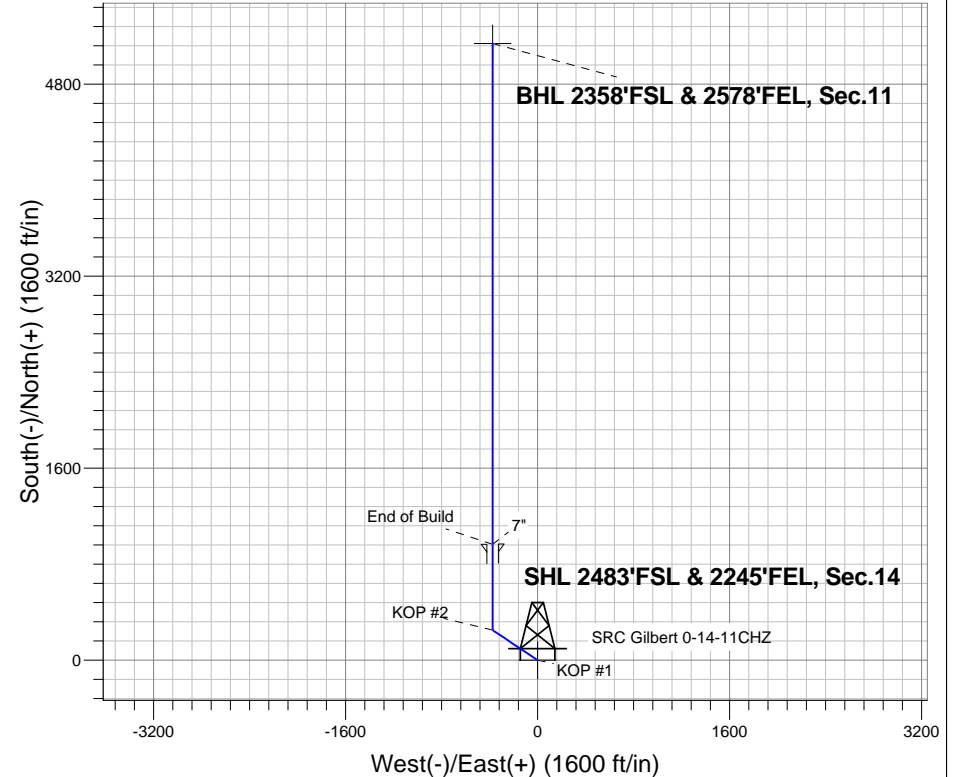
Azimuths to True North  
Magnetic North: 8.57°

Magnetic Field  
Strength: 52909.3srT  
Dip Angle: 66.98°  
Date: 7/30/2013  
Model: IGRF2010

SRC Gilbert 42-14-11NHZ Pad Sec.14-T5N-R66W  
SRC Gilbert 0-14-11CHZ  
Plan #1 (7-30-13)  
16:34, July 30 2013

## ANNOTATIONS

TVD	MD	Annotation
1200.0	1200.0	KOP #1
6731.8	6760.1	KOP #2
7448.0	7885.1	End of Build



## SECTION DETAILS

Sec	MD	Inc	Azi	TVD	+N/-S	+E/-W	DLeg	TFace	VSec	Target
1	0.0	0.00	0.00	0.0	0.0	0.0	0.00	0.00	0.0	
2	1200.0	0.00	0.00	1200.0	0.0	0.0	0.00	0.00	0.0	
3	1573.9	7.48	303.78	1572.8	13.5	-20.2	2.00	303.78	15.0	
4	4654.4	7.48	303.78	4627.2	236.5	-353.5	0.00	0.00	261.5	
5	5028.3	0.00	0.00	5000.0	250.0	-373.7	2.00	180.00	276.4	
6	6760.1	0.00	0.00	6731.8	250.0	-373.7	0.00	0.00	276.4	
7	7885.1	90.00	360.00	7448.0	966.2	-373.7	8.00	360.00	990.8	
8	12057.9	90.00	360.00	7448.0	5139.0	-373.7	0.00	0.00	5152.6	BHL 2358'FSL & 2578'FEL, Sec.11

BHL 2358'FSL & 2578'FEL, Sec.11

Vertical Section at 355.84° (550 ft/in)



## **Synergy Resources**

**SEC.14-T5N-R66W**

**SRC Gilbert 42-14-11NHZ Pad Sec.14-T5N-R66W**

**SRC Gilbert 0-14-11CHZ**

**Wellbore #1**

**Plan: Plan #1 (7-30-13)**

## **Standard Planning Report**

**30 July, 2013**

<b>Database:</b>	Landmark	<b>Local Co-ordinate Reference:</b>	Well SRC Gilbert 0-14-11CHZ
<b>Company:</b>	Synergy Resources	<b>TVD Reference:</b>	WELL @ 4847.0ft (RKB-12')
<b>Project:</b>	SEC.14-T5N-R66W	<b>MD Reference:</b>	WELL @ 4847.0ft (RKB-12')
<b>Site:</b>	SRC Gilbert 42-14-11NHZ Pad Sec.14-T5N-R66W	<b>North Reference:</b>	True
<b>Well:</b>	SRC Gilbert 0-14-11CHZ	<b>Survey Calculation Method:</b>	Minimum Curvature
<b>Wellbore:</b>	Wellbore #1		
<b>Design:</b>	Plan #1 (7-30-13)		

<b>Project</b>	SEC.14-T5N-R66W		
<b>Map System:</b>	US State Plane 1983	<b>System Datum:</b>	Mean Sea Level
<b>Geo Datum:</b>	North American Datum 1983		Using Well Reference Point
<b>Map Zone:</b>	Colorado Northern Zone		Using geodetic scale factor

Site						SRC Gilbert 42-14-11NHZ Pad Sec.14-T5N-R66W											
Site Position:						Northing:			1,389,074.67 ft			Latitude:			40.398941		
From:			Lat/Long			Easting:			3,210,850.06 ft			Longitude:			-104.742939		
Position Uncertainty:			0.0 ft			Slot Radius:			"			Grid Convergence:			0.49 °		

Well	SRC Gilbert 0-14-11CHZ					
Well Position	+N/-S	30.2 ft	Northing:	1,389,104.71 ft	Latitude:	40.399024
	+E/-W	-22.0 ft	Easting:	3,210,827.80 ft	Longitude:	-104.743018
Position Uncertainty		0.0 ft	Wellhead Elevation:	ft	Ground Level:	4,835.0 ft

<b>Wellbore</b>	Wellbore #1				
<b>Magnetics</b>	<b>Model Name</b>	<b>Sample Date</b>	<b>Declination (°)</b>	<b>Dip Angle (°)</b>	<b>Field Strength (nT)</b>
	IGRF2010	7/30/2013	8.57	66.98	52,909

<b>Design</b>	Plan #1 (7-30-13)			
<b>Audit Notes:</b>				
<b>Version:</b>	<b>Phase:</b>	PROTOTYPE	<b>Tie On Depth:</b>	0.0
<b>Vertical Section:</b>	<b>Depth From (TVD) (ft)</b>	<b>+N/-S (ft)</b>	<b>+E/-W (ft)</b>	<b>Direction (°)</b>
	0.0	0.0	0.0	355.84

<b>Plan Sections</b>										
Measured Depth (ft)	Inclination (°)	Azimuth (°)	Vertical Depth (ft)	+N/-S (ft)	+E/-W (ft)	Dogleg Rate (°/100ft)	Build Rate (°/100ft)	Turn Rate (°/100ft)	TFO (°)	Target
0.0	0.00	0.00	0.0	0.0	0.0	0.00	0.00	0.00	0.00	
1,200.0	0.00	0.00	1,200.0	0.0	0.0	0.00	0.00	0.00	0.00	
1,573.9	7.48	303.78	1,572.8	13.5	-20.2	2.00	2.00	0.00	303.78	
4,654.4	7.48	303.78	4,627.2	236.5	-353.5	0.00	0.00	0.00	0.00	
5,028.3	0.00	0.00	5,000.0	250.0	-373.7	2.00	-2.00	0.00	180.00	
6,760.1	0.00	0.00	6,731.8	250.0	-373.7	0.00	0.00	0.00	0.00	
7,885.1	90.00	360.00	7,448.0	966.2	-373.7	8.00	8.00	0.00	360.00	
12,057.9	90.00	360.00	7,448.0	5,139.0	-373.7	0.00	0.00	0.00	0.00	BHL 2358'FSL & 25

<b>Database:</b>	Landmark	<b>Local Co-ordinate Reference:</b>	Well SRC Gilbert 0-14-11CHZ
<b>Company:</b>	Synergy Resources	<b>TVD Reference:</b>	WELL @ 4847.0ft (RKB-12')
<b>Project:</b>	SEC.14-T5N-R66W	<b>MD Reference:</b>	WELL @ 4847.0ft (RKB-12')
<b>Site:</b>	SRC Gilbert 42-14-11NHZ Pad	<b>North Reference:</b>	True
	Sec.14-T5N-R66W		
<b>Well:</b>	SRC Gilbert 0-14-11CHZ	<b>Survey Calculation Method:</b>	Minimum Curvature
<b>Wellbore:</b>	Wellbore #1		
<b>Design:</b>	Plan #1 (7-30-13)		

#### Planned Survey

Measured Depth (ft)	Inclination (°)	Azimuth (°)	Vertical Depth (ft)	+N/-S (ft)	+E/-W (ft)	Vertical Section (ft)	Dogleg Rate (°/100ft)	Build Rate (°/100ft)	Turn Rate (°/100ft)
0.0	0.00	0.00	0.0	0.0	0.0	0.0	0.00	0.00	0.00
1.0	0.00	0.00	1.0	0.0	0.0	0.0	0.00	0.00	0.00
<b>SHL 2483'FSL &amp; 2245'FEL, Sec.14</b>									
100.0	0.00	0.00	100.0	0.0	0.0	0.0	0.00	0.00	0.00
200.0	0.00	0.00	200.0	0.0	0.0	0.0	0.00	0.00	0.00
300.0	0.00	0.00	300.0	0.0	0.0	0.0	0.00	0.00	0.00
400.0	0.00	0.00	400.0	0.0	0.0	0.0	0.00	0.00	0.00
500.0	0.00	0.00	500.0	0.0	0.0	0.0	0.00	0.00	0.00
600.0	0.00	0.00	600.0	0.0	0.0	0.0	0.00	0.00	0.00
700.0	0.00	0.00	700.0	0.0	0.0	0.0	0.00	0.00	0.00
800.0	0.00	0.00	800.0	0.0	0.0	0.0	0.00	0.00	0.00
900.0	0.00	0.00	900.0	0.0	0.0	0.0	0.00	0.00	0.00
1,000.0	0.00	0.00	1,000.0	0.0	0.0	0.0	0.00	0.00	0.00
1,100.0	0.00	0.00	1,100.0	0.0	0.0	0.0	0.00	0.00	0.00
1,200.0	0.00	0.00	1,200.0	0.0	0.0	0.0	0.00	0.00	0.00
<b>KOP #1</b>									
1,300.0	2.00	303.78	1,300.0	1.0	-1.5	1.1	2.00	2.00	0.00
1,400.0	4.00	303.78	1,399.8	3.9	-5.8	4.3	2.00	2.00	0.00
1,500.0	6.00	303.78	1,499.5	8.7	-13.0	9.6	2.00	2.00	0.00
1,573.9	7.48	303.78	1,572.8	13.5	-20.2	15.0	2.00	2.00	0.00
1,600.0	7.48	303.78	1,598.7	15.4	-23.1	17.1	0.00	0.00	0.00
1,700.0	7.48	303.78	1,697.9	22.7	-33.9	25.1	0.00	0.00	0.00
1,800.0	7.48	303.78	1,797.0	29.9	-44.7	33.1	0.00	0.00	0.00
1,900.0	7.48	303.78	1,896.2	37.1	-55.5	41.1	0.00	0.00	0.00
2,000.0	7.48	303.78	1,995.3	44.4	-66.3	49.1	0.00	0.00	0.00
2,100.0	7.48	303.78	2,094.5	51.6	-77.2	57.1	0.00	0.00	0.00
2,200.0	7.48	303.78	2,193.6	58.9	-88.0	65.1	0.00	0.00	0.00
2,300.0	7.48	303.78	2,292.8	66.1	-98.8	73.1	0.00	0.00	0.00
2,400.0	7.48	303.78	2,391.9	73.3	-109.6	81.1	0.00	0.00	0.00
2,500.0	7.48	303.78	2,491.1	80.6	-120.4	89.1	0.00	0.00	0.00
2,600.0	7.48	303.78	2,590.2	87.8	-131.2	97.1	0.00	0.00	0.00
2,700.0	7.48	303.78	2,689.4	95.0	-142.1	105.1	0.00	0.00	0.00
2,800.0	7.48	303.78	2,788.5	102.3	-152.9	113.1	0.00	0.00	0.00
2,900.0	7.48	303.78	2,887.7	109.5	-163.7	121.1	0.00	0.00	0.00
3,000.0	7.48	303.78	2,986.8	116.7	-174.5	129.1	0.00	0.00	0.00
3,100.0	7.48	303.78	3,086.0	124.0	-185.3	137.1	0.00	0.00	0.00
3,200.0	7.48	303.78	3,185.1	131.2	-196.1	145.1	0.00	0.00	0.00
3,300.0	7.48	303.78	3,284.3	138.4	-207.0	153.1	0.00	0.00	0.00
3,400.0	7.48	303.78	3,383.4	145.7	-217.8	161.1	0.00	0.00	0.00
3,500.0	7.48	303.78	3,482.6	152.9	-228.6	169.1	0.00	0.00	0.00
3,600.0	7.48	303.78	3,581.7	160.2	-239.4	177.1	0.00	0.00	0.00
3,700.0	7.48	303.78	3,680.9	167.4	-250.2	185.1	0.00	0.00	0.00
3,800.0	7.48	303.78	3,780.0	174.6	-261.0	193.1	0.00	0.00	0.00
3,900.0	7.48	303.78	3,879.2	181.9	-271.9	201.1	0.00	0.00	0.00
4,000.0	7.48	303.78	3,978.3	189.1	-282.7	209.1	0.00	0.00	0.00
4,100.0	7.48	303.78	4,077.5	196.3	-293.5	217.1	0.00	0.00	0.00
4,200.0	7.48	303.78	4,176.6	203.6	-304.3	225.1	0.00	0.00	0.00
4,300.0	7.48	303.78	4,275.8	210.8	-315.1	233.1	0.00	0.00	0.00
4,400.0	7.48	303.78	4,374.9	218.0	-325.9	241.1	0.00	0.00	0.00
4,500.0	7.48	303.78	4,474.1	225.3	-336.8	249.1	0.00	0.00	0.00
4,600.0	7.48	303.78	4,573.2	232.5	-347.6	257.1	0.00	0.00	0.00
4,654.4	7.48	303.78	4,627.2	236.5	-353.5	261.5	0.00	0.00	0.00
4,700.0	6.57	303.78	4,672.4	239.6	-358.1	264.9	2.00	-2.00	0.00

<b>Database:</b>	Landmark	<b>Local Co-ordinate Reference:</b>	Well SRC Gilbert 0-14-11CHZ
<b>Company:</b>	Synergy Resources	<b>TVD Reference:</b>	WELL @ 4847.0ft (RKB-12')
<b>Project:</b>	SEC.14-T5N-R66W	<b>MD Reference:</b>	WELL @ 4847.0ft (RKB-12')
<b>Site:</b>	SRC Gilbert 42-14-11NHZ Pad	<b>North Reference:</b>	True
	Sec.14-T5N-R66W		
<b>Well:</b>	SRC Gilbert 0-14-11CHZ	<b>Survey Calculation Method:</b>	Minimum Curvature
<b>Wellbore:</b>	Wellbore #1		
<b>Design:</b>	Plan #1 (7-30-13)		

Planned Survey									
Measured Depth (ft)	Inclination (°)	Azimuth (°)	Vertical Depth (ft)	+N/-S (ft)	+E/-W (ft)	Vertical Section (ft)	Dogleg Rate (°/100ft)	Build Rate (°/100ft)	Turn Rate (°/100ft)
4,800.0	4.57	303.78	4,771.9	244.9	-366.1	270.9	2.00	-2.00	0.00
4,900.0	2.57	303.78	4,871.7	248.4	-371.3	274.7	2.00	-2.00	0.00
5,000.0	0.57	303.78	4,971.7	249.9	-373.6	276.4	2.00	-2.00	0.00
5,028.3	0.00	0.00	5,000.0	250.0	-373.7	276.4	2.00	-2.00	0.00
5,100.0	0.00	0.00	5,071.7	250.0	-373.7	276.4	0.00	0.00	0.00
5,200.0	0.00	0.00	5,171.7	250.0	-373.7	276.4	0.00	0.00	0.00
5,300.0	0.00	0.00	5,271.7	250.0	-373.7	276.4	0.00	0.00	0.00
5,400.0	0.00	0.00	5,371.7	250.0	-373.7	276.4	0.00	0.00	0.00
5,500.0	0.00	0.00	5,471.7	250.0	-373.7	276.4	0.00	0.00	0.00
5,600.0	0.00	0.00	5,571.7	250.0	-373.7	276.4	0.00	0.00	0.00
5,700.0	0.00	0.00	5,671.7	250.0	-373.7	276.4	0.00	0.00	0.00
5,800.0	0.00	0.00	5,771.7	250.0	-373.7	276.4	0.00	0.00	0.00
5,900.0	0.00	0.00	5,871.7	250.0	-373.7	276.4	0.00	0.00	0.00
6,000.0	0.00	0.00	5,971.7	250.0	-373.7	276.4	0.00	0.00	0.00
6,100.0	0.00	0.00	6,071.7	250.0	-373.7	276.4	0.00	0.00	0.00
6,200.0	0.00	0.00	6,171.7	250.0	-373.7	276.4	0.00	0.00	0.00
6,300.0	0.00	0.00	6,271.7	250.0	-373.7	276.4	0.00	0.00	0.00
6,400.0	0.00	0.00	6,371.7	250.0	-373.7	276.4	0.00	0.00	0.00
6,500.0	0.00	0.00	6,471.7	250.0	-373.7	276.4	0.00	0.00	0.00
6,600.0	0.00	0.00	6,571.7	250.0	-373.7	276.4	0.00	0.00	0.00
6,700.0	0.00	0.00	6,671.7	250.0	-373.7	276.4	0.00	0.00	0.00
6,760.1	0.00	0.00	6,731.8	250.0	-373.7	276.4	0.00	0.00	0.00
KOP #2									
6,800.0	3.19	360.00	6,771.7	251.1	-373.7	277.6	8.00	8.00	0.00
6,900.0	11.19	360.00	6,870.8	263.6	-373.7	290.0	8.00	8.00	0.00
7,000.0	19.19	360.00	6,967.2	289.8	-373.7	316.1	8.00	8.00	0.00
7,100.0	27.19	360.00	7,059.1	329.1	-373.7	355.4	8.00	8.00	0.00
7,200.0	35.19	360.00	7,144.5	380.9	-373.7	407.0	8.00	8.00	0.00
7,300.0	43.19	360.00	7,222.0	444.0	-373.7	470.0	8.00	8.00	0.00
7,400.0	51.19	360.00	7,289.9	517.3	-373.7	543.1	8.00	8.00	0.00
7,500.0	59.19	360.00	7,346.9	599.4	-373.7	624.9	8.00	8.00	0.00
7,600.0	67.19	360.00	7,392.0	688.5	-373.7	713.8	8.00	8.00	0.00
7,700.0	75.19	360.00	7,424.2	783.1	-373.7	808.2	8.00	8.00	0.00
7,800.0	83.19	360.00	7,442.9	881.3	-373.7	906.1	8.00	8.00	0.00
7,885.1	90.00	360.00	7,448.0	966.2	-373.7	990.7	8.00	8.00	0.00
End of Build - 7"									
7,900.0	90.00	360.00	7,448.0	981.1	-373.7	1,005.6	0.01	0.01	0.00
8,000.0	90.00	360.00	7,448.0	1,081.1	-373.7	1,105.3	0.00	0.00	0.00
8,100.0	90.00	360.00	7,448.0	1,181.1	-373.7	1,205.1	0.00	0.00	0.00
8,200.0	90.00	360.00	7,448.0	1,281.1	-373.7	1,304.8	0.00	0.00	0.00
8,300.0	90.00	360.00	7,448.0	1,381.1	-373.7	1,404.5	0.00	0.00	0.00
8,400.0	90.00	360.00	7,448.0	1,481.1	-373.7	1,504.3	0.00	0.00	0.00
8,500.0	90.00	360.00	7,448.0	1,581.1	-373.7	1,604.0	0.00	0.00	0.00
8,600.0	90.00	360.00	7,448.0	1,681.1	-373.7	1,703.8	0.00	0.00	0.00
8,700.0	90.00	360.00	7,448.0	1,781.1	-373.7	1,803.5	0.00	0.00	0.00
8,800.0	90.00	360.00	7,448.0	1,881.1	-373.7	1,903.2	0.00	0.00	0.00
8,900.0	90.00	360.00	7,448.0	1,981.1	-373.7	2,003.0	0.00	0.00	0.00
9,000.0	90.00	360.00	7,448.0	2,081.1	-373.7	2,102.7	0.00	0.00	0.00
9,100.0	90.00	360.00	7,448.0	2,181.1	-373.7	2,202.4	0.00	0.00	0.00
9,200.0	90.00	360.00	7,448.0	2,281.1	-373.7	2,302.2	0.00	0.00	0.00
9,300.0	90.00	360.00	7,448.0	2,381.1	-373.7	2,401.9	0.00	0.00	0.00
9,400.0	90.00	360.00	7,448.0	2,481.1	-373.7	2,501.6	0.00	0.00	0.00
9,500.0	90.00	360.00	7,448.0	2,581.1	-373.7	2,601.4	0.00	0.00	0.00

<b>Database:</b>	Landmark	<b>Local Co-ordinate Reference:</b>	Well SRC Gilbert 0-14-11CHZ
<b>Company:</b>	Synergy Resources	<b>TVD Reference:</b>	WELL @ 4847.0ft (RKB-12')
<b>Project:</b>	SEC.14-T5N-R66W	<b>MD Reference:</b>	WELL @ 4847.0ft (RKB-12')
<b>Site:</b>	SRC Gilbert 42-14-11NHZ Pad	<b>North Reference:</b>	True
	Sec.14-T5N-R66W		
<b>Well:</b>	SRC Gilbert 0-14-11CHZ	<b>Survey Calculation Method:</b>	Minimum Curvature
<b>Wellbore:</b>	Wellbore #1		
<b>Design:</b>	Plan #1 (7-30-13)		

## Planned Survey

Measured Depth (ft)	Inclination (°)	Azimuth (°)	Vertical Depth (ft)	+N/-S (ft)	+E/-W (ft)	Vertical Section (ft)	Dogleg Rate (°/100ft)	Build Rate (°/100ft)	Turn Rate (°/100ft)
9,600.0	90.00	360.00	7,448.0	2,681.1	-373.7	2,701.1	0.00	0.00	0.00
9,700.0	90.00	360.00	7,448.0	2,781.1	-373.7	2,800.9	0.00	0.00	0.00
9,800.0	90.00	360.00	7,448.0	2,881.1	-373.7	2,900.6	0.00	0.00	0.00
9,900.0	90.00	360.00	7,448.0	2,981.1	-373.7	3,000.3	0.00	0.00	0.00
10,000.0	90.00	360.00	7,448.0	3,081.1	-373.7	3,100.1	0.00	0.00	0.00
10,100.0	90.00	360.00	7,448.0	3,181.1	-373.7	3,199.8	0.00	0.00	0.00
10,200.0	90.00	360.00	7,448.0	3,281.1	-373.7	3,299.5	0.00	0.00	0.00
10,300.0	90.00	360.00	7,448.0	3,381.1	-373.7	3,399.3	0.00	0.00	0.00
10,400.0	90.00	360.00	7,448.0	3,481.1	-373.7	3,499.0	0.00	0.00	0.00
10,500.0	90.00	360.00	7,448.0	3,581.1	-373.7	3,598.8	0.00	0.00	0.00
10,600.0	90.00	360.00	7,448.0	3,681.1	-373.7	3,698.5	0.00	0.00	0.00
10,700.0	90.00	360.00	7,448.0	3,781.1	-373.7	3,798.2	0.00	0.00	0.00
10,800.0	90.00	360.00	7,448.0	3,881.1	-373.7	3,898.0	0.00	0.00	0.00
10,900.0	90.00	360.00	7,448.0	3,981.1	-373.7	3,997.7	0.00	0.00	0.00
11,000.0	90.00	360.00	7,448.0	4,081.1	-373.7	4,097.4	0.00	0.00	0.00
11,100.0	90.00	360.00	7,448.0	4,181.1	-373.7	4,197.2	0.00	0.00	0.00
11,200.0	90.00	360.00	7,448.0	4,281.1	-373.7	4,296.9	0.00	0.00	0.00
11,300.0	90.00	360.00	7,448.0	4,381.1	-373.7	4,396.6	0.00	0.00	0.00
11,400.0	90.00	360.00	7,448.0	4,481.1	-373.7	4,496.4	0.00	0.00	0.00
11,500.0	90.00	360.00	7,448.0	4,581.1	-373.7	4,596.1	0.00	0.00	0.00
11,600.0	90.00	360.00	7,448.0	4,681.1	-373.7	4,695.9	0.00	0.00	0.00
11,700.0	90.00	360.00	7,448.0	4,781.1	-373.7	4,795.6	0.00	0.00	0.00
11,800.0	90.00	360.00	7,448.0	4,881.1	-373.7	4,895.3	0.00	0.00	0.00
11,900.0	90.00	360.00	7,448.0	4,981.1	-373.7	4,995.1	0.00	0.00	0.00
12,000.0	90.00	360.00	7,448.0	5,081.1	-373.7	5,094.8	0.00	0.00	0.00
12,057.9	90.00	360.00	7,448.0	5,139.0	-373.7	5,152.6	0.00	0.00	0.00
BHL 2358'FSL & 2578'FEL, Sec.11									

## Targets

Target Name	Dip Angle (°)	Dip Dir. (°)	TVD (ft)	+N/-S (ft)	+E/-W (ft)	Northing (ft)	Easting (ft)	Latitude	Longitude
- hit/miss target									
- Shape									
BHL 2358'FSL & 2578'FEL	0.00	0.00	7,448.0	5,139.0	-373.7	1,394,240.12	3,210,410.26	40.413130	-104.744360
- plan hits target center									
- Point									
SHL 2483'FSL & 2248'FEL	0.00	0.00	1.0	0.0	0.0	1,389,104.72	3,210,827.80	40.399024	-104.743018
- plan hits target center									
- Point									

## Casing Points

Measured Depth (ft)	Vertical Depth (ft)	Name	Casing Diameter (")	Hole Diameter (")
7,885.1	7,448.0	7"	7	7-1/2

<b>Database:</b>	Landmark	<b>Local Co-ordinate Reference:</b>	Well SRC Gilbert 0-14-11CHZ
<b>Company:</b>	Synergy Resources	<b>TVD Reference:</b>	WELL @ 4847.0ft (RKB-12')
<b>Project:</b>	SEC.14-T5N-R66W	<b>MD Reference:</b>	WELL @ 4847.0ft (RKB-12')
<b>Site:</b>	SRC Gilbert 42-14-11NHZ Pad	<b>North Reference:</b>	True
	Sec.14-T5N-R66W		
<b>Well:</b>	SRC Gilbert 0-14-11CHZ	<b>Survey Calculation Method:</b>	Minimum Curvature
<b>Wellbore:</b>	Wellbore #1		
<b>Design:</b>	Plan #1 (7-30-13)		

Plan Annotations				
Measured Depth (ft)	Vertical Depth (ft)	Local Coordinates		Comment
		+N/-S (ft)	+E/-W (ft)	
1,200.0	1,200.0	0.0	0.0	KOP #1
6,760.1	6,731.8	250.0	-373.7	KOP #2
7,885.1	7,448.0	966.2	-373.7	End of Build