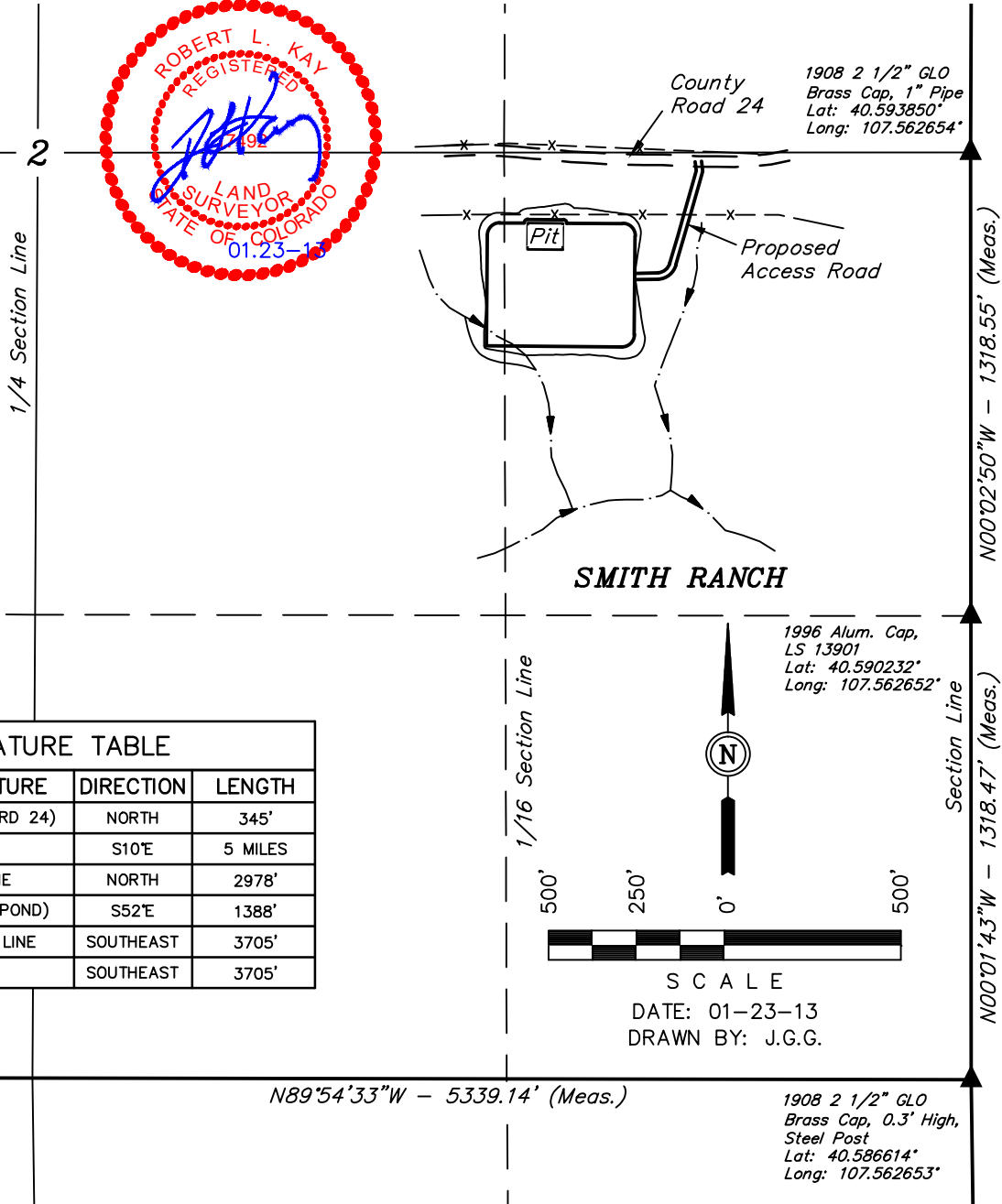


AXIA ENERGY

FIGURE #5

LOCATION DRAWING FOR BULLDOG #2-33H-791 & #2-43H-791 SECTION 2, T7N, R91W, 6th. P.M. LOT 13



FEATURE TABLE

| EXISTING FEATURE | DIRECTION | LENGTH |
|------------------------|-----------|---------|
| PUBLIC ROAD (CO RD 24) | NORTH | 345' |
| RAILROAD | S10°E | 5 MILES |
| PROPERTY LINE | NORTH | 2978' |
| SURFACE WATER (POND) | S52°E | 1388' |
| EXISTING POWER LINE | SOUTHEAST | 3705' |
| BUILDING | SOUTHEAST | 3705' |



SCALE

DATE: 01-23-13
DRAWN BY: J.G.G.

PLANT COMMUNITY

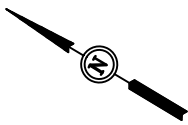
- ☐ DISTURBED GRASSLAND
- ☐ NATIVE GRASSLAND
- ☐ SHRUB LAND
- ☐ PLAINS RIPARIAN
- ☐ MOUNTAIN RIPARIAN
- ☐ FOREST LAND
- ☐ WETLANDS AQUATIC
- ☐ ALPINE
- ☐ OTHER (Describe): _____

CURRENT LAND USE

- CROP LAND: ☐ IRRIGATED ☐ DRY LAND ☐ IMPROVED PASTURE ☐ HAY MEADOW ☐ CRP
- NON-CROP LAND: ☐ RANGELAND ☐ TIMBER ☐ RECREATIONAL ☐ OTHER (Describe) _____
- SUBDIVIDED: ☐ INDUSTRIAL ☐ COMMERCIAL ☐ RESIDENTIAL _____

FUTURE LAND USE

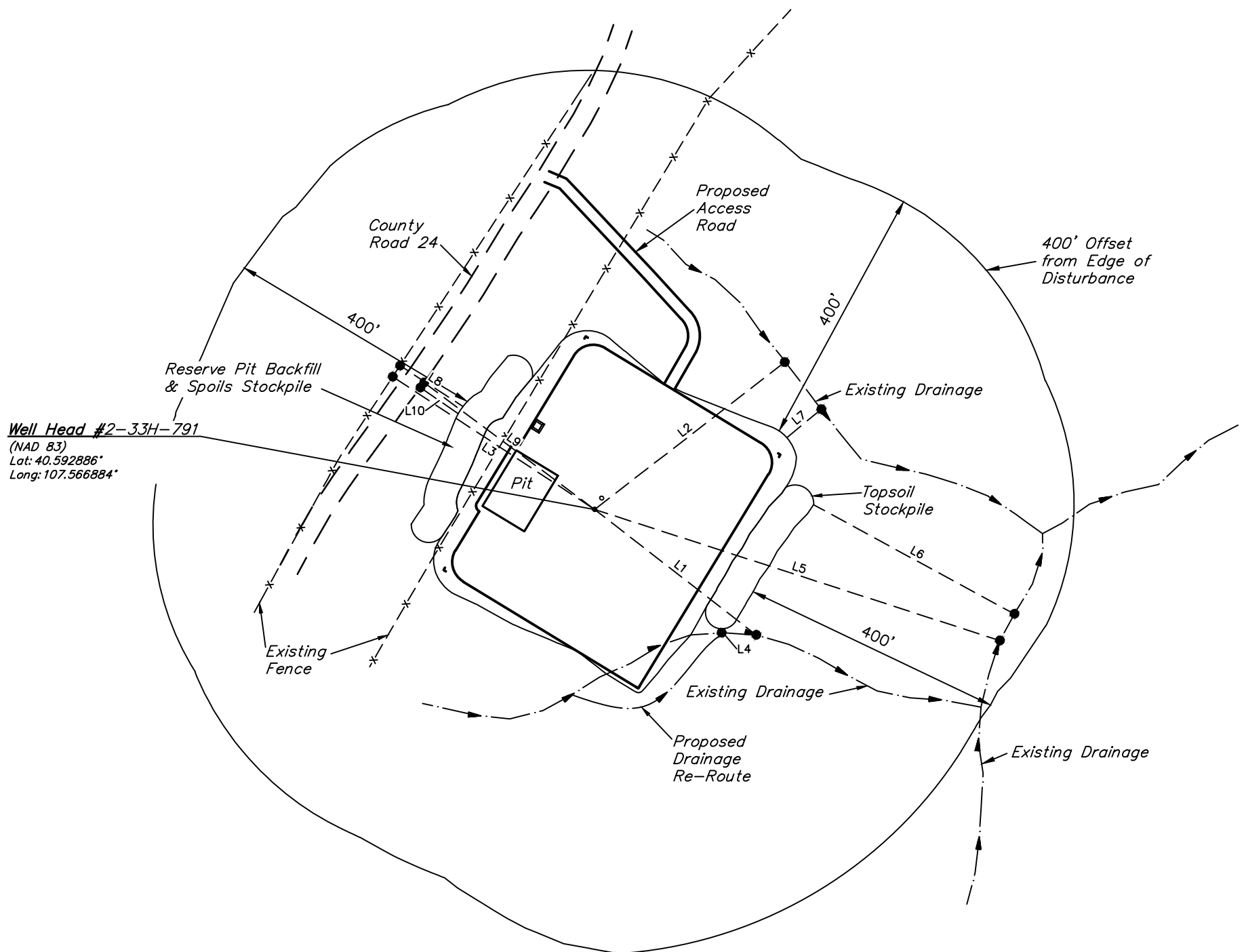
- CROP LAND: ☐ IRRIGATED ☐ DRY LAND ☐ IMPROVED PASTURE ☐ HAY MEADOW ☐ CRP
- NON-CROP LAND: ☐ RANGELAND ☐ TIMBER ☐ RECREATIONAL ☐ OTHER (Describe) _____
- SUBDIVIDED: ☐ INDUSTRIAL ☐ COMMERCIAL ☐ RESIDENTIAL _____



AXIA ENERGY
LOCATION DRAWING DETAIL FOR
BULLDOG #2-33H-791 & #2-43H-791
SECTION 2, T7N, R91W, 6th. P.M.
LOT 13

FIGURE #5A

SCALE: 1" = 200'
DATE: 01-23-13
DRAWN BY: J.G.G.



| LINE TABLE | | |
|------------|-------------|---------|
| LINE | DIRECTION | LENGTH |
| L1 | S06°56'34"W | 314.40' |
| L2 | S68°41'40"E | 369.48' |
| L3 | N02°23'49"E | 371.39' |
| L4 | S58°53'02"W | 5.95' |
| L5 | S12°59'01"E | 654.16' |
| L6 | S02°21'47"E | 351.43' |
| L7 | S70°27'30"E | 68.61' |
| L8 | N02°06'20"E | 115.40' |
| L9 | N05°41'53"E | 326.62' |
| L10 | N03°44'28"E | 70.64' |