

AXIA ENERGY

LOCATION LAYOUT FOR

BULLDOG #2-33H-791 & #2-43H-791

SECTION 2, T7N, R91W, 6th. P.M.

LOT 13

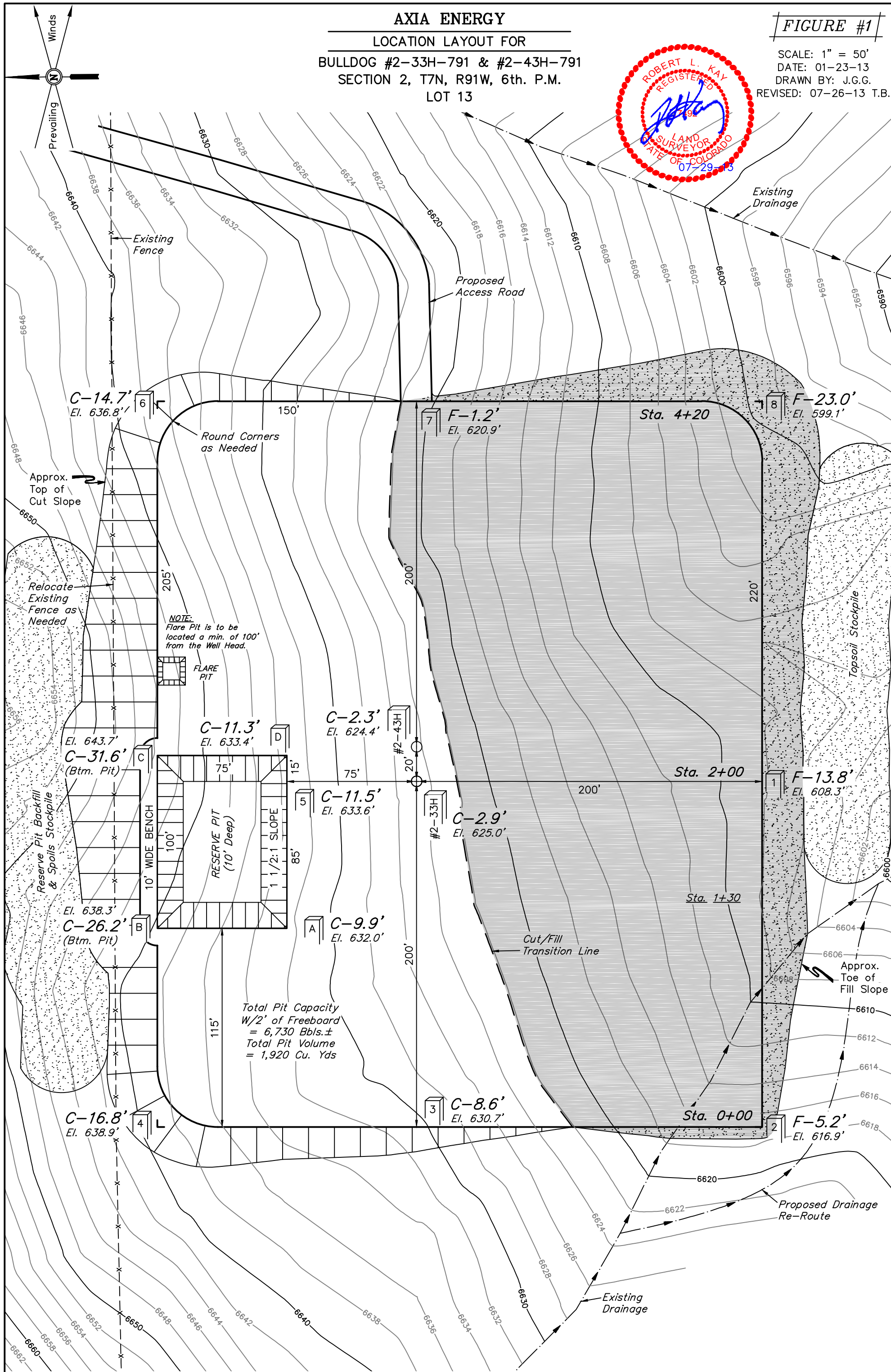
FIGURE #1

SCALE: 1" = 50'

DATE: 01-23-13

DRAWN BY: J.G.G.

REVISED: 07-26-13 T.B.



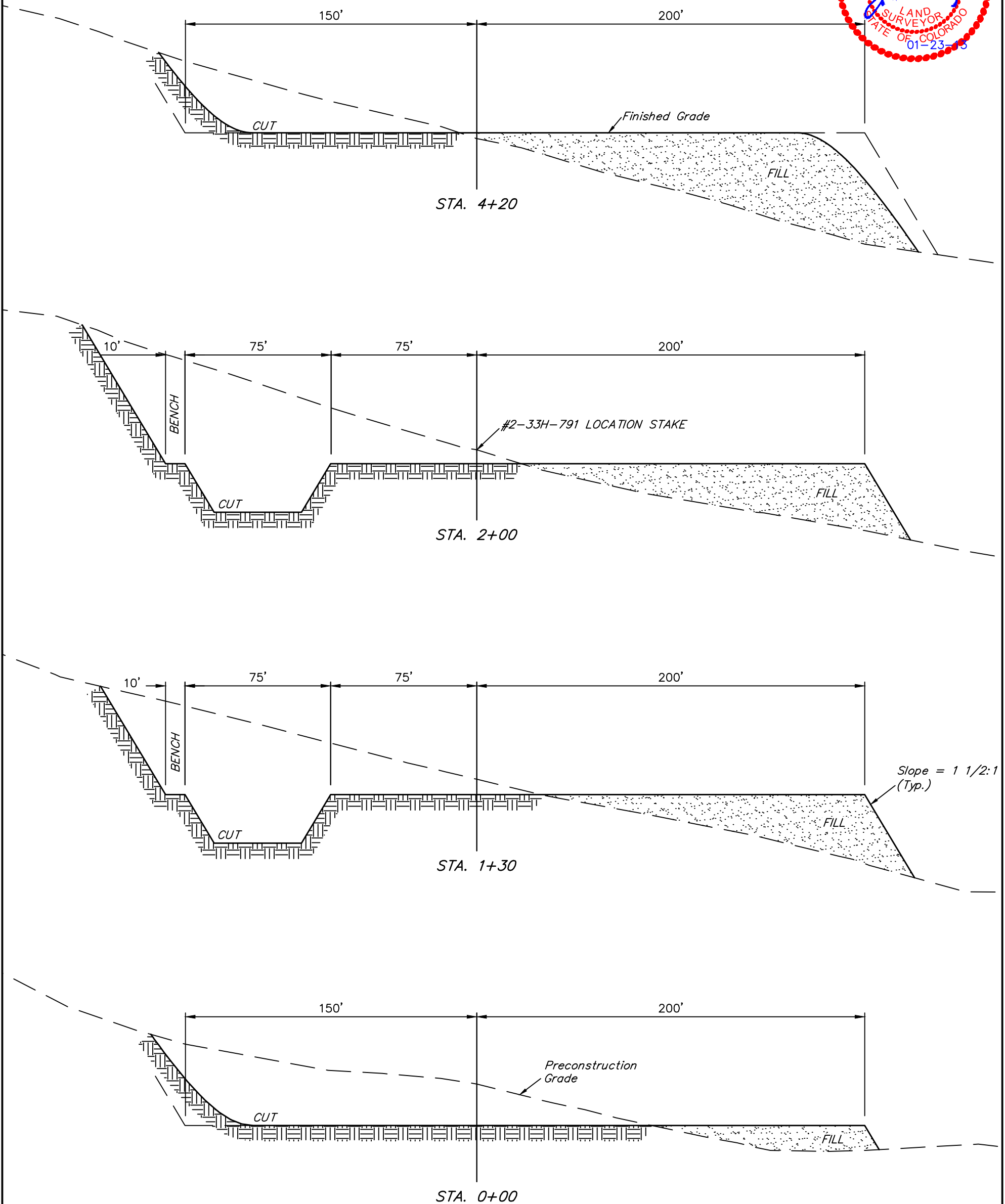
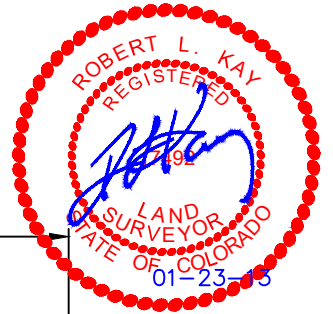
Elev. Ungraded Ground At #2-33H Loc. Stake = 6625.0'
FINISHED GRADE ELEV. AT #2-33H LOC. STAKE = 6622.1'

UINTAH ENGINEERING & LAND SURVEYING
85 So. 200 East * Vernal, Utah 84078 * (435) 789-1017

1" = 20'
X-Section
Scale
1" = 50'
DATE: 01-23-13
DRAWN BY: J.G.G.

AXIA ENERGY
TYPICAL CROSS SECTIONS FOR
BULLDOG #2-33H-791 & #2-43H-791
SECTION 2, T7N, R91W, 6th. P.M.
LOT 13

FIGURE #2



NOTE:
Topsoil should not be
Stripped Below Finished
Grade on Substructure Area.

* NOTE:
FILL QUANTITY INCLUDES
5% FOR COMPACTION

APPROXIMATE YARDAGES

(6") Topsoil Stripping = 3,390 Cu. Yds.
Remaining Location = 31,320 Cu. Yds.
TOTAL CUT = 34,710 CU. YDS.
FILL = 30,360 CU. YDS.

EXCESS MATERIAL = 4,350 Cu. Yds.
Topsoil & Pit Backfill = 4,350 Cu. Yds.
(1/2 Pit Vol.)
EXCESS UNBALANCE = 0 Cu. Yds.
(After Interim Rehabilitation)

APPROXIMATE ACREAGES
WELL SITE DISTURBANCE = ± 4.837 ACRES
ACCESS ROAD DISTURBANCE = ± 0.294 ACRES
TOTAL = ± 5.131 ACRES

UINTAH ENGINEERING & LAND SURVEYING
85 So. 200 East * Vernal, Utah 84078 * (435) 789-1017