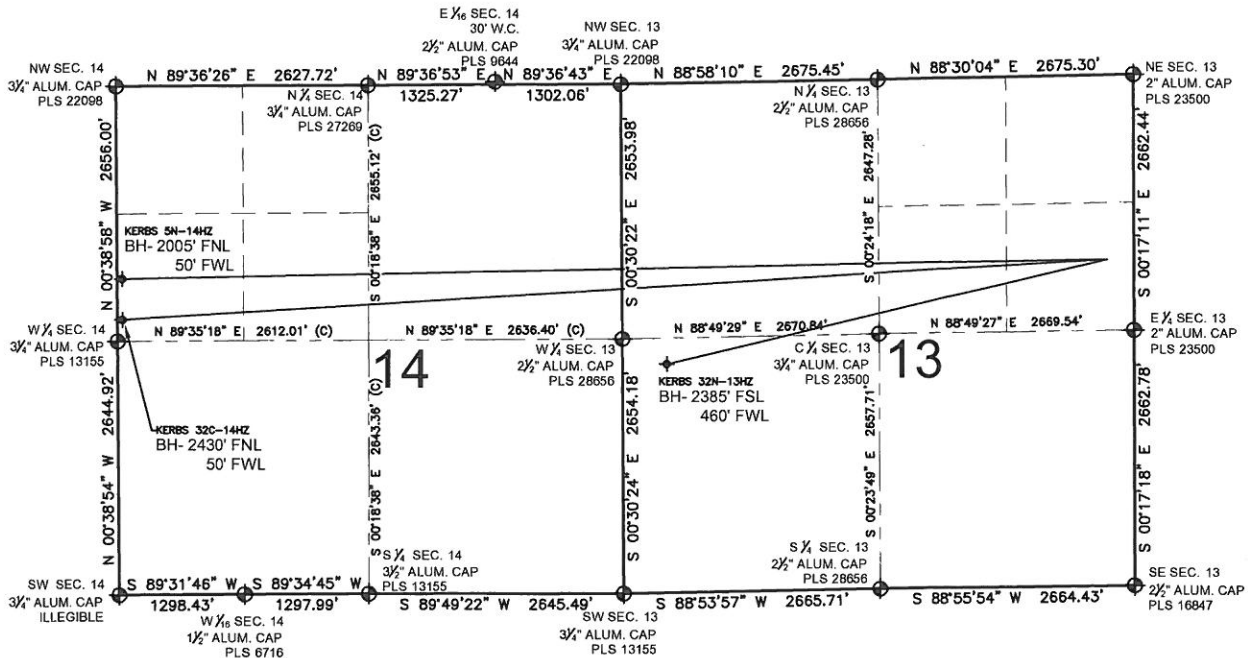


KERBS 32C-14HZ MULTI-WELL PLAN

SECTION 13, TOWNSHIP 3 NORTH, RANGE 68 WEST, 6TH P.M.



NOTES:

KERBS 5N-14HZ TO BE AT 1921' FNL, 343' FEL.
BOTTOM HOLE AT 2005' FNL & 50' FWL, SEC. 14.
KERBS 32C-14HZ TO BE AT 1921' FNL, 313' FEL.
BOTTOM HOLE AT 2430' FNL & 50' FWL, SEC. 14.
KERBS 32N-13HZ TO BE AT 1921' FNL, 283' FEL.
BOTTOM HOLE AT 2385' FSL & 460' FWL, SEC. 13.

LEGEND

= EXISTING MONUMENT
 = BOTTOM HOLE
 BH= BOTTOM HOLE
 = PROPOSED WELL
 = EXISTING WELL

PREPARED BY:

PFS

Petroleum Field Services, LLC
1801 W. 13th Ave.
Denver, CO 80204

KERR-MCGEE OIL & GAS ONSHORE LP

FIELD DATE:
03-19-13

DRAWING DATE:
06-25-13

SURFACE LOCATION:

SE 1/4 NE 1/4, SEC. 13, T3N, R68W, 6TH P.M.
WELD COUNTY, COLORADO

