

# **LAND SURVEYOR'S CERTIFICATION**

LAMP, RYNEARSON & ASSOCIATES, INC., OF FT. COLLINS, COLORADO HAS IN ACCORDANCE WITH A REQUEST FROM COLLIN RICHARDSON FOR MINERAL RESOURCES, INC., DETERMINED THE SURFACE LOCATION OF THE WELL DESIGNATED AS 4H 5-7-31 TO BE 1629' FROM THE SOUTH LINE AND 288' FROM THE WEST LINE OF SECTION 32, TOWNSHIP 6 NORTH, RANGE 65 WEST OF THE 6TH P.M., WELD COUNTY, COLORADO.

DAVID JOHN BERGLUND  
COLORADO PLS 38199

DATE OF SURVEY: 8/19/2010 (SECTION CONTROL)  
DATE OF SURVEY: 4/29/2011 (WELL LOCATION)



**LAMP RYNEARSON & ASSOCIATES**

4715 Innovation Drive 970.226.0342 | P  
Fort Collins, CO 80525 970.226.0879 | F  
www.LRA-Inc.com

Proposed Well Location Exhibit  
4H 5-7-31

1 of 2

drawn by  
KJW

date  
7-12-11

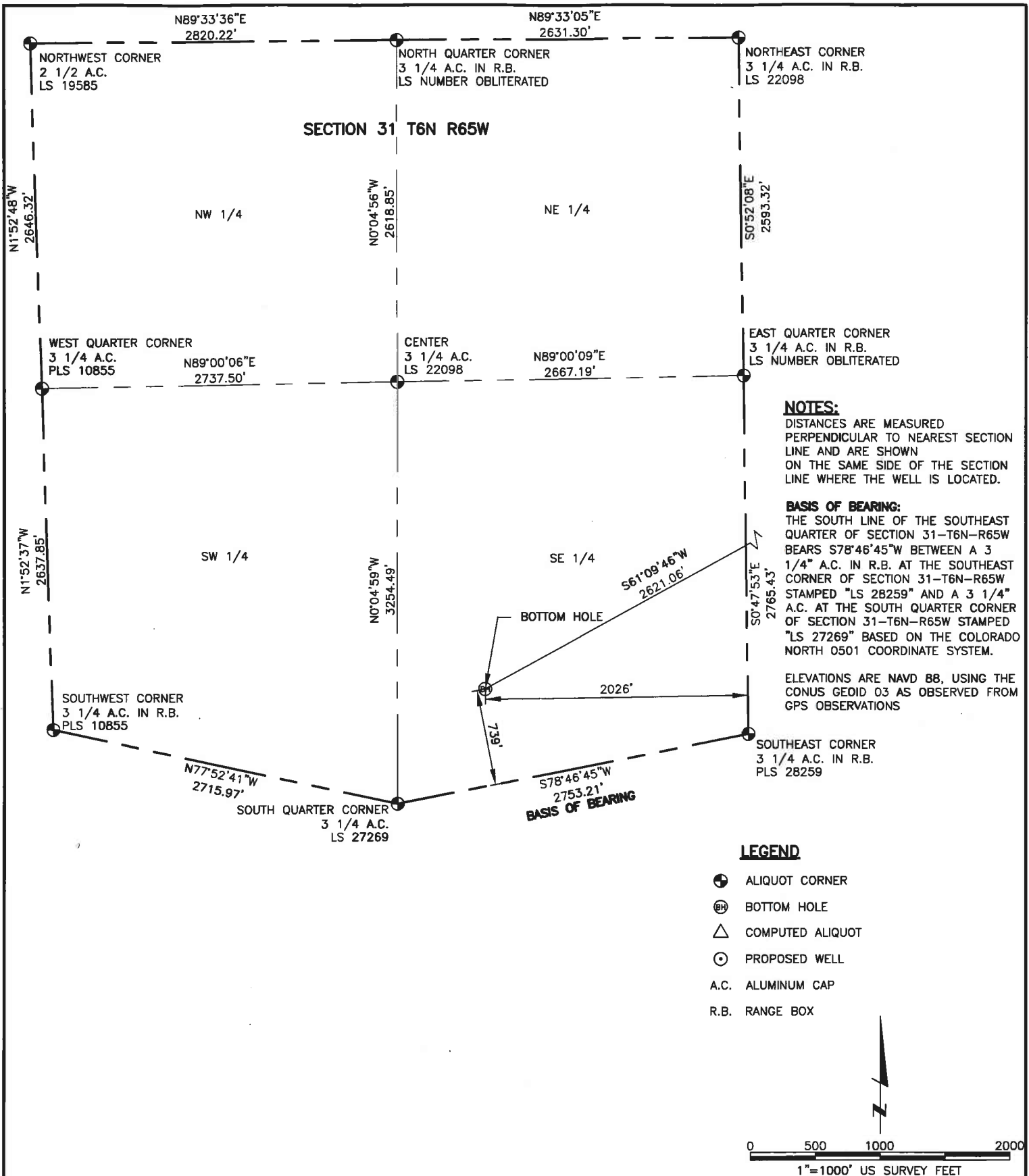
cogcc id  
423393

project - task number  
0210007.00

book and page  
MR01 4

path/filename P:\Engineering\0210007 ISLAND GROVE\DRAWINGS\EXHIBITS\0210007EXPWH.dwg

surface - location  
NW 1/4, SW 1/4, SEC 32 T6N  
R65W



**LAMP RYNEARSON  
& ASSOCIATES**

4715 Innovation Drive 970.226.0342 | P  
Fort Collins, CO 80525 970.226.0879 | F  
www.LRA-Inc.com

Proposed Well Location Exhibit  
4H 5-7-31  
Bottom Hole  
2 of 2

drawn by  
KJW

date  
7-12-11

cogcc id  
423393

project - task number  
0210007.00

book and page  
MR01 4

path/filename P:\Engineering\0210007 ISLAND GROVE\DRAWINGS\EXHIBITS\0210007EXPWHA.dwg

surface - location  
NW 1/4, SW 1/4, SEC 32 T6N  
R65W