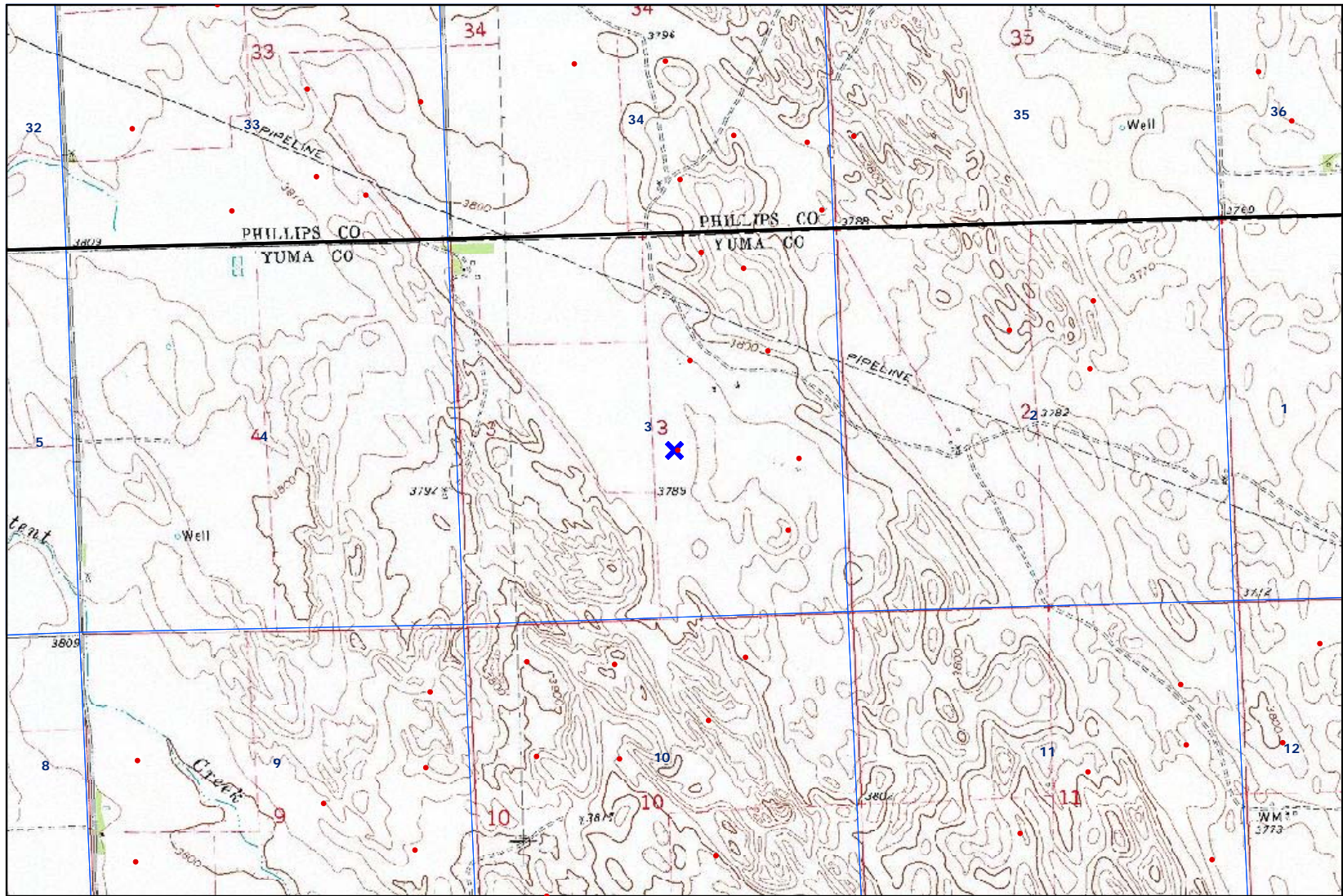


# Bledsoe 10-3-5-45 Topo

 **Red Lines**  
**OIL AND GAS WELLS**  
● Oil and Gas Wells  
✕ Temporary Point  
**CITIES TOWNS PLACES**  
□ Towns and Places  
**ROADS AND RRS**  
— Major Highways  
**SAN JUAN BASIN**  
-- Fruitland PC  
**MUNICIPAL BOUNDARIES**  
**TOPOS (1: 24K)**  
■ NE Colorado Topo



SCALE 1 : 26,105

