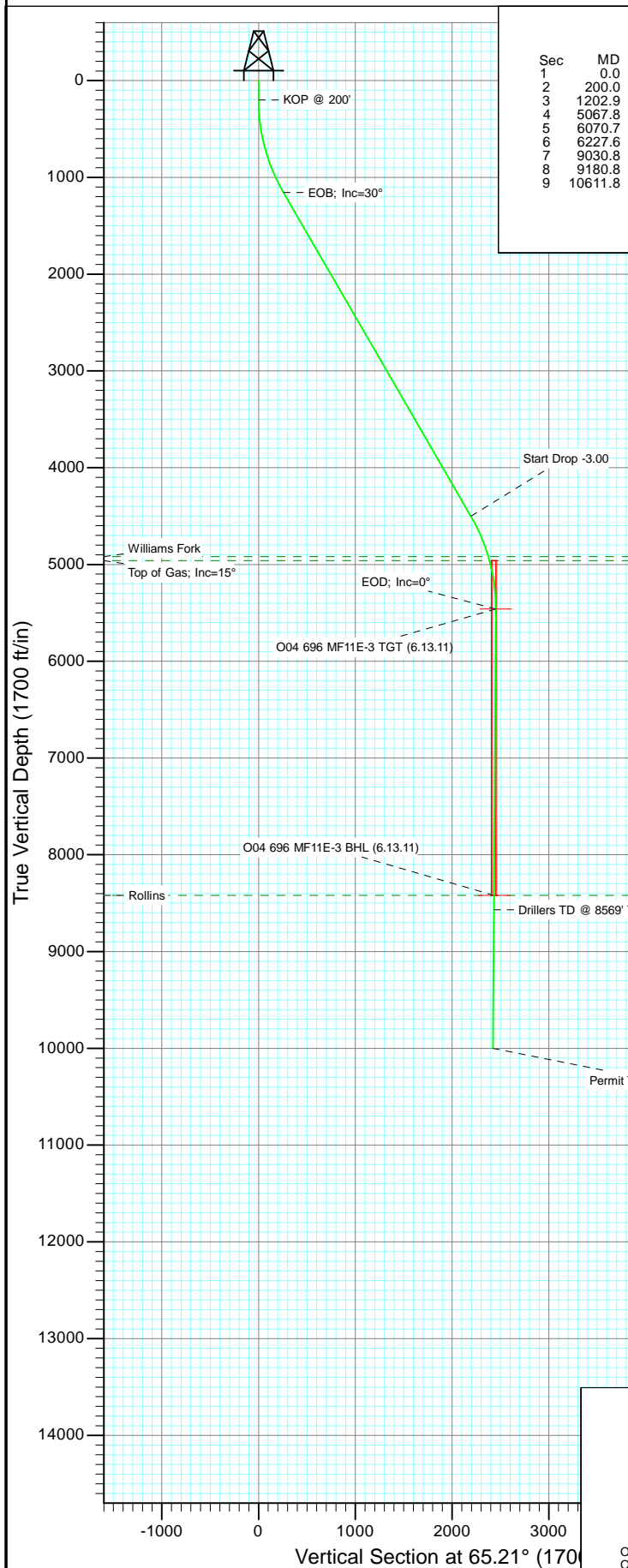
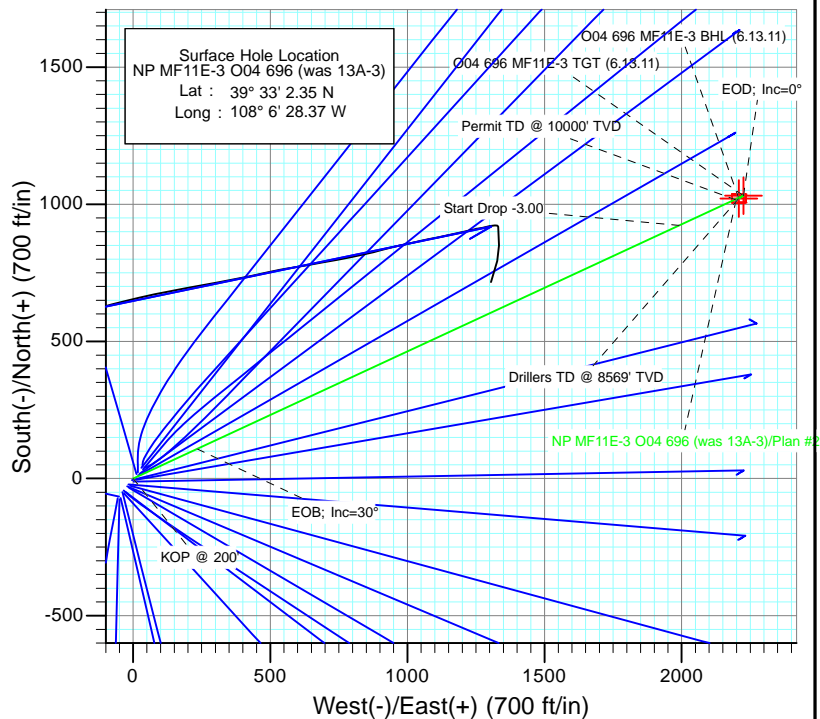




Project: North Piceance
Site: O04 696 (3rd)
Well: NP MF11E-3 O04 696 (was 13A-3)
Wellbore: DD
Design: Plan #2



SECTION DETAILS										
Sec	MD	Inc	Azi	TVD	+N/-S	+E/-W	Dleg	TFace	Vsect	Target
1	0.0	0.00	0.00	0.0	0.0	0.0	0.00	0.00	0.0	
2	200.0	0.00	0.00	200.0	0.0	0.0	0.00	0.00	0.0	
3	1202.9	30.09	65.14	1157.5	108.2	233.5	3.00	65.14	257.3	
4	5067.8	30.09	65.14	4501.5	922.8	1991.5	0.00	0.00	2194.9	
5	6070.7	0.00	0.00	5459.0	1031.0	2225.0	3.00	180.00	2452.3	O04 696 MF11E-3 TGT (6.13.11)
6	6227.6	0.39	239.59	5615.9	1030.7	2224.5	0.25	239.59	2451.7	
7	9030.8	0.39	239.59	8419.0	1021.0	2208.0	0.00	0.00	2432.6	O04 696 MF11E-3 BHL (6.13.11)
8	9180.8	0.39	239.59	8569.0	1020.5	2207.1	0.00	0.00	2431.6	
9	10611.8	0.39	239.59	10000.0	1015.5	2198.7	0.00	0.00	2421.9	



Azimuths to True North
Magnetic North: 10.54°

Magnetic Field
Strength: 52365.1nT
Dip Angle: 65.79°
Date: 6/17/2010
Model: IGRF2010

FORMATION TOP DETAILS

TVDPath	MDPath	Formation
4919.0	5523.2	Williams Fork
4959.0	5564.8	Top of Gas; Inc=15°
8419.0	9030.8	Rollins

Plan #2 NP MF11E-3 O04 696 (was 13A-3) 95xxx; LR WELL @ 6044.0ft (Original Well Elev) North American Datum 1983 Well NP MF11E-3 O04 696 (was 13A-3), True North							
Type TD	Target No Target (Freehand)	Azimuth 65.21	Origin Type Slot	N/S 0.0	E/W 0.0	From TVD 0.0	
Name	TVD	+N/-S	+E/-W	Latitude	Longitude		
O04 696 MF11E-3 TGT (6.13.11)	5459.0	1031.0	2225.0	39° 33' 12.54 N	108° 5' 59.96 W		
O04 696 MF11E-3 BHL (6.13.11)	8419.0	1021.0	2208.0	39° 33' 12.44 N	108° 6' 0.18 W		

Planning Report

Database:	USA EDM 5000 US Multi Users DB	Local Co-ordinate Reference:	Well NP MF11E-3 O04 696 (was 13A-3)
Company:	EnCana Oil & Gas (USA) Inc	TVD Reference:	WELL @ 6044.0ft (Original Well Elev)
Project:	North Piceance	MD Reference:	WELL @ 6044.0ft (Original Well Elev)
Site:	O04 696 (3rd)	North Reference:	True
Well:	NP MF11E-3 O04 696 (was 13A-3)	Survey Calculation Method:	Minimum Curvature
Wellbore:	DD		
Design:	Plan #2		

Project	North Piceance		
Map System:	US State Plane 1983	System Datum:	Mean Sea Level
Geo Datum:	North American Datum 1983		
Map Zone:	Colorado Central Zone		

Site	O04 696 (3rd)			
Site Position:		Northing:	1,635,941.08 ft	Latitude: 39° 33' 1.64 N
From:	Lat/Long	Easting:	2,264,673.43 ft	Longitude: 108° 6' 29.09 W
Position Uncertainty:	0.0 ft	Slot Radius:	13.200 in	Grid Convergence: -1.64 °

Well	NP MF11E-3 O04 696 (was 13A-3)			
Well Position	+N/-S	0.0 ft	Northing:	1,636,011.25 ft
	+E/-W	0.0 ft	Easting:	2,264,731.86 ft
Position Uncertainty		0.0 ft	Wellhead Elevation:	ft
			Ground Level:	6,022.0 ft

Wellbore	DD				
Magnetics	Model Name	Sample Date	Declination (°)	Dip Angle (°)	Field Strength (nT)
	IGRF2010	6/17/2010	10.54	65.79	52,365

Design	Plan #2			
Audit Notes:				
Version:	Phase:	PLAN	Tie On Depth:	0.0
Vertical Section:	Depth From (TVD) (ft)	+N/-S (ft)	+E/-W (ft)	Direction (°)
	0.0	0.0	0.0	65.21

Plan Sections										
Measured Depth (ft)	Inclination (°)	Azimuth (°)	Vertical Depth (ft)	+N/-S (ft)	+E/-W (ft)	Dogleg Rate (°/100ft)	Build Rate (°/100ft)	Turn Rate (°/100ft)	TFO (°)	Target
0.0	0.00	0.00	0.0	0.0	0.0	0.00	0.00	0.00	0.00	
200.0	0.00	0.00	200.0	0.0	0.0	0.00	0.00	0.00	0.00	
1,202.9	30.09	65.14	1,157.5	108.2	233.5	3.00	3.00	0.00	65.14	
5,067.8	30.09	65.14	4,501.5	922.8	1,991.5	0.00	0.00	0.00	0.00	
6,070.7	0.00	0.00	5,459.0	1,031.0	2,225.0	3.00	-3.00	0.00	180.00	O04 696 MF11E-3 TC
6,227.6	0.39	239.59	5,615.9	1,030.7	2,224.5	0.25	0.25	-76.75	239.59	
9,030.8	0.39	239.59	8,419.0	1,021.0	2,208.0	0.00	0.00	0.00	0.00	O04 696 MF11E-3 B-
9,180.8	0.39	239.59	8,569.0	1,020.5	2,207.1	0.00	0.00	0.00	0.00	
10,611.8	0.39	239.59	10,000.0	1,015.5	2,198.7	0.00	0.00	0.00	0.00	

Planning Report

Database: USA EDM 5000 US Multi Users DB
Company: EnCana Oil & Gas (USA) Inc
Project: North Piceance
Site: O04 696 (3rd)
Well: NP MF11E-3 O04 696 (was 13A-3)
Wellbore: DD
Design: Plan #2

Local Co-ordinate Reference: Well NP MF11E-3 O04 696 (was 13A-3)
TVD Reference: WELL @ 6044.0ft (Original Well Elev)
MD Reference: WELL @ 6044.0ft (Original Well Elev)
North Reference: True
Survey Calculation Method: Minimum Curvature

Planned Survey

Measured Depth (ft)	Inclination (°)	Azimuth (°)	Vertical Depth (ft)	+N/-S (ft)	+E/-W (ft)	Vertical Section (ft)	Dogleg Rate (°/100ft)	Build Rate (°/100ft)	Comments / Formations
0.0	0.00	0.00	0.0	0.0	0.0	0.0	0.00	0.00	
30.0	0.00	0.00	30.0	0.0	0.0	0.0	0.00	0.00	
60.0	0.00	0.00	60.0	0.0	0.0	0.0	0.00	0.00	
90.0	0.00	0.00	90.0	0.0	0.0	0.0	0.00	0.00	
120.0	0.00	0.00	120.0	0.0	0.0	0.0	0.00	0.00	
150.0	0.00	0.00	150.0	0.0	0.0	0.0	0.00	0.00	
180.0	0.00	0.00	180.0	0.0	0.0	0.0	0.00	0.00	
200.0	0.00	0.00	200.0	0.0	0.0	0.0	0.00	0.00	KOP @ 200'
210.0	0.30	65.14	210.0	0.0	0.0	0.0	3.00	3.00	
240.0	1.20	65.14	240.0	0.2	0.4	0.4	3.00	3.00	
270.0	2.10	65.14	270.0	0.5	1.2	1.3	3.00	3.00	
300.0	3.00	65.14	300.0	1.1	2.4	2.6	3.00	3.00	
330.0	3.90	65.14	329.9	1.9	4.0	4.4	3.00	3.00	
360.0	4.80	65.14	359.8	2.8	6.1	6.7	3.00	3.00	
390.0	5.70	65.14	389.7	4.0	8.6	9.4	3.00	3.00	
420.0	6.60	65.14	419.5	5.3	11.5	12.7	3.00	3.00	
450.0	7.50	65.14	449.3	6.9	14.8	16.3	3.00	3.00	
480.0	8.40	65.14	479.0	8.6	18.6	20.5	3.00	3.00	
510.0	9.30	65.14	508.6	10.6	22.8	25.1	3.00	3.00	
540.0	10.20	65.14	538.2	12.7	27.4	30.2	3.00	3.00	
570.0	11.10	65.14	567.7	15.0	32.4	35.7	3.00	3.00	
600.0	12.00	65.14	597.1	17.5	37.9	41.7	3.00	3.00	
630.0	12.90	65.14	626.4	20.3	43.7	48.2	3.00	3.00	
660.0	13.80	65.14	655.6	23.2	50.0	55.1	3.00	3.00	
690.0	14.70	65.14	684.6	26.3	56.7	62.5	3.00	3.00	
720.0	15.60	65.14	713.6	29.6	63.8	70.4	3.00	3.00	
750.0	16.50	65.14	742.4	33.1	71.4	78.6	3.00	3.00	
780.0	17.40	65.14	771.1	36.7	79.3	87.4	3.00	3.00	
810.0	18.30	65.14	799.7	40.6	87.6	96.6	3.00	3.00	
840.0	19.20	65.14	828.1	44.7	96.4	106.2	3.00	3.00	
870.0	20.10	65.14	856.3	48.9	105.5	116.3	3.00	3.00	
900.0	21.00	65.14	884.4	53.3	115.1	126.9	3.00	3.00	
930.0	21.90	65.14	912.4	57.9	125.1	137.8	3.00	3.00	
960.0	22.80	65.14	940.1	62.7	135.4	149.2	3.00	3.00	
990.0	23.70	65.14	967.7	67.7	146.1	161.1	3.00	3.00	
1,020.0	24.60	65.14	995.0	72.9	157.3	173.3	3.00	3.00	
1,050.0	25.50	65.14	1,022.2	78.2	168.8	186.0	3.00	3.00	
1,080.0	26.40	65.14	1,049.2	83.7	180.7	199.2	3.00	3.00	
1,110.0	27.30	65.14	1,076.0	89.4	193.0	212.7	3.00	3.00	
1,140.0	28.20	65.14	1,102.5	95.3	205.7	226.7	3.00	3.00	
1,170.0	29.10	65.14	1,128.8	101.4	218.7	241.1	3.00	3.00	
1,200.0	30.00	65.14	1,154.9	107.6	232.2	255.9	3.00	3.00	
1,202.9	30.09	65.14	1,157.5	108.2	233.5	257.3	3.00	3.00	EOB; Inc=30°
1,230.0	30.09	65.14	1,180.9	113.9	245.8	270.9	0.00	0.00	
1,260.0	30.09	65.14	1,206.8	120.2	259.5	286.0	0.00	0.00	
1,290.0	30.09	65.14	1,232.8	126.5	273.1	301.0	0.00	0.00	
1,320.0	30.09	65.14	1,258.8	132.9	286.7	316.0	0.00	0.00	
1,350.0	30.09	65.14	1,284.7	139.2	300.4	331.1	0.00	0.00	
1,380.0	30.09	65.14	1,310.7	145.5	314.0	346.1	0.00	0.00	
1,410.0	30.09	65.14	1,336.6	151.8	327.7	361.2	0.00	0.00	
1,440.0	30.09	65.14	1,362.6	158.2	341.3	376.2	0.00	0.00	
1,470.0	30.09	65.14	1,388.5	164.5	355.0	391.2	0.00	0.00	

Planning Report

Database:	USA EDM 5000 US Multi Users DB	Local Co-ordinate Reference:	Well NP MF11E-3 O04 696 (was 13A-3)
Company:	EnCana Oil & Gas (USA) Inc	TVD Reference:	WELL @ 6044.0ft (Original Well Elev)
Project:	North Piceance	MD Reference:	WELL @ 6044.0ft (Original Well Elev)
Site:	O04 696 (3rd)	North Reference:	True
Well:	NP MF11E-3 O04 696 (was 13A-3)	Survey Calculation Method:	Minimum Curvature
Wellbore:	DD		
Design:	Plan #2		

Planned Survey

Measured Depth (ft)	Inclination (°)	Azimuth (°)	Vertical Depth (ft)	+N/-S (ft)	+E/-W (ft)	Vertical Section (ft)	Dogleg Rate (°/100ft)	Build Rate (°/100ft)	Comments / Formations
1,500.0	30.09	65.14	1,414.5	170.8	368.6	406.3	0.00	0.00	
1,530.0	30.09	65.14	1,440.5	177.1	382.3	421.3	0.00	0.00	
1,560.0	30.09	65.14	1,466.4	183.5	395.9	436.4	0.00	0.00	
1,590.0	30.09	65.14	1,492.4	189.8	409.6	451.4	0.00	0.00	
1,620.0	30.09	65.14	1,518.3	196.1	423.2	466.4	0.00	0.00	
1,650.0	30.09	65.14	1,544.3	202.4	436.9	481.5	0.00	0.00	
1,680.0	30.09	65.14	1,570.3	208.7	450.5	496.5	0.00	0.00	
1,710.0	30.09	65.14	1,596.2	215.1	464.1	511.6	0.00	0.00	
1,740.0	30.09	65.14	1,622.2	221.4	477.8	526.6	0.00	0.00	
1,770.0	30.09	65.14	1,648.1	227.7	491.4	541.6	0.00	0.00	
1,800.0	30.09	65.14	1,674.1	234.0	505.1	556.7	0.00	0.00	
1,830.0	30.09	65.14	1,700.0	240.4	518.7	571.7	0.00	0.00	
1,860.0	30.09	65.14	1,726.0	246.7	532.4	586.8	0.00	0.00	
1,890.0	30.09	65.14	1,752.0	253.0	546.0	601.8	0.00	0.00	
1,920.0	30.09	65.14	1,777.9	259.3	559.7	616.8	0.00	0.00	
1,950.0	30.09	65.14	1,803.9	265.7	573.3	631.9	0.00	0.00	
1,980.0	30.09	65.14	1,829.8	272.0	587.0	646.9	0.00	0.00	
2,010.0	30.09	65.14	1,855.8	278.3	600.6	662.0	0.00	0.00	
2,040.0	30.09	65.14	1,881.7	284.6	614.3	677.0	0.00	0.00	
2,070.0	30.09	65.14	1,907.7	290.9	627.9	692.0	0.00	0.00	
2,100.0	30.09	65.14	1,933.7	297.3	641.5	707.1	0.00	0.00	
2,130.0	30.09	65.14	1,959.6	303.6	655.2	722.1	0.00	0.00	
2,160.0	30.09	65.14	1,985.6	309.9	668.8	737.2	0.00	0.00	
2,190.0	30.09	65.14	2,011.5	316.2	682.5	752.2	0.00	0.00	
2,220.0	30.09	65.14	2,037.5	322.6	696.1	767.2	0.00	0.00	
2,250.0	30.09	65.14	2,063.4	328.9	709.8	782.3	0.00	0.00	
2,280.0	30.09	65.14	2,089.4	335.2	723.4	797.3	0.00	0.00	
2,310.0	30.09	65.14	2,115.4	341.5	737.1	812.4	0.00	0.00	
2,340.0	30.09	65.14	2,141.3	347.9	750.7	827.4	0.00	0.00	
2,370.0	30.09	65.14	2,167.3	354.2	764.4	842.4	0.00	0.00	
2,400.0	30.09	65.14	2,193.2	360.5	778.0	857.5	0.00	0.00	
2,430.0	30.09	65.14	2,219.2	366.8	791.7	872.5	0.00	0.00	
2,460.0	30.09	65.14	2,245.1	373.2	805.3	887.6	0.00	0.00	
2,490.0	30.09	65.14	2,271.1	379.5	818.9	902.6	0.00	0.00	

Targets

Target Name	Dip Angle (°)	Dip Dir. (°)	TVD (ft)	+N/-S (ft)	+E/-W (ft)	Northing (ft)	Easting (ft)	Latitude	Longitude
- hit/miss target									
- Shape									
O04 696 MF11E-3 TGT	0.00	0.00	5,459.0	1,031.0	2,225.0	1,636,977.96	2,266,985.54	39° 33' 12.54 N	108° 5' 59.96 W
- plan misses target center by 3544.6ft at 2490.0ft MD (2271.1 TVD, 379.5 N, 818.9 E)									
- Point									
O04 696 MF11E-3 BHL	0.00	0.00	8,419.0	1,021.0	2,208.0	1,636,968.47	2,266,968.24	39° 33' 12.44 N	108° 6' 0.18 W
- plan misses target center by 6335.4ft at 2490.0ft MD (2271.1 TVD, 379.5 N, 818.9 E)									
- Rectangle (sides W30.0 H50.0 D0.0)									

Planning Report

Database: USA EDM 5000 US Multi Users DB
Company: EnCana Oil & Gas (USA) Inc
Project: North Piceance
Site: O04 696 (3rd)
Well: NP MF11E-3 O04 696 (was 13A-3)
Wellbore: DD
Design: Plan #2

Local Co-ordinate Reference: Well NP MF11E-3 O04 696 (was 13A-3)
TVD Reference: WELL @ 6044.0ft (Original Well Elev)
MD Reference: WELL @ 6044.0ft (Original Well Elev)
North Reference: True
Survey Calculation Method: Minimum Curvature

Planned Survey

Measured Depth (ft)	Inclination (°)	Azimuth (°)	Vertical Depth (ft)	+N/-S (ft)	+E/-W (ft)	Vertical Section (ft)	Dogleg Rate (°/100ft)	Build Rate (°/100ft)	Comments / Formations
2,500.0	30.09	65.14	2,279.8	381.6	823.5	907.6	0.00	0.00	
2,600.0	30.09	65.14	2,366.3	402.7	869.0	957.7	0.00	0.00	
2,700.0	30.09	65.14	2,452.8	423.7	914.5	1,007.9	0.00	0.00	
2,800.0	30.09	65.14	2,539.3	444.8	960.0	1,058.0	0.00	0.00	
2,900.0	30.09	65.14	2,625.9	465.9	1,005.4	1,108.1	0.00	0.00	
3,000.0	30.09	65.14	2,712.4	487.0	1,050.9	1,158.3	0.00	0.00	
3,100.0	30.09	65.14	2,798.9	508.0	1,096.4	1,208.4	0.00	0.00	
3,200.0	30.09	65.14	2,885.4	529.1	1,141.9	1,258.5	0.00	0.00	
3,300.0	30.09	65.14	2,972.0	550.2	1,187.4	1,308.7	0.00	0.00	
3,400.0	30.09	65.14	3,058.5	571.3	1,232.9	1,358.8	0.00	0.00	
3,500.0	30.09	65.14	3,145.0	592.4	1,278.4	1,408.9	0.00	0.00	
3,600.0	30.09	65.14	3,231.5	613.4	1,323.9	1,459.1	0.00	0.00	
3,700.0	30.09	65.14	3,318.1	634.5	1,369.3	1,509.2	0.00	0.00	
3,800.0	30.09	65.14	3,404.6	655.6	1,414.8	1,559.3	0.00	0.00	
3,900.0	30.09	65.14	3,491.1	676.7	1,460.3	1,609.5	0.00	0.00	
4,000.0	30.09	65.14	3,577.6	697.7	1,505.8	1,659.6	0.00	0.00	
4,100.0	30.09	65.14	3,664.2	718.8	1,551.3	1,709.7	0.00	0.00	
4,200.0	30.09	65.14	3,750.7	739.9	1,596.8	1,759.9	0.00	0.00	
4,300.0	30.09	65.14	3,837.2	761.0	1,642.3	1,810.0	0.00	0.00	
4,400.0	30.09	65.14	3,923.7	782.1	1,687.8	1,860.1	0.00	0.00	
4,500.0	30.09	65.14	4,010.3	803.1	1,733.2	1,910.3	0.00	0.00	
4,600.0	30.09	65.14	4,096.8	824.2	1,778.7	1,960.4	0.00	0.00	
4,700.0	30.09	65.14	4,183.3	845.3	1,824.2	2,010.5	0.00	0.00	
4,800.0	30.09	65.14	4,269.8	866.4	1,869.7	2,060.7	0.00	0.00	
4,900.0	30.09	65.14	4,356.4	887.4	1,915.2	2,110.8	0.00	0.00	
5,000.0	30.09	65.14	4,442.9	908.5	1,960.7	2,160.9	0.00	0.00	
5,067.8	30.09	65.14	4,501.5	922.8	1,991.5	2,194.9	0.00	0.00	Start Drop -3.00
5,100.0	29.12	65.14	4,529.6	929.5	2,006.0	2,210.8	3.00	-3.00	
5,200.0	26.12	65.14	4,618.1	949.0	2,048.0	2,257.2	3.00	-3.00	
5,300.0	23.12	65.14	4,709.0	966.5	2,085.8	2,298.9	3.00	-3.00	
5,400.0	20.12	65.14	4,802.0	982.0	2,119.2	2,335.7	3.00	-3.00	
5,500.0	17.12	65.14	4,896.8	995.4	2,148.2	2,367.6	3.00	-3.00	
5,523.2	16.42	65.14	4,919.0	998.2	2,154.3	2,374.3	3.00	-3.00	Williams Fork
5,564.8	15.18	65.14	4,959.0	1,003.0	2,164.6	2,385.6	3.00	-3.00	Top of Gas; Inc=15°
5,600.0	14.12	65.14	4,993.0	1,006.7	2,172.6	2,394.5	3.00	-3.00	
5,700.0	11.12	65.14	5,090.6	1,015.9	2,192.5	2,416.4	3.00	-3.00	
5,800.0	8.12	65.14	5,189.2	1,022.9	2,207.6	2,433.1	3.00	-3.00	
5,900.0	5.12	65.14	5,288.5	1,027.8	2,218.1	2,444.6	3.00	-3.00	
6,000.0	2.12	65.14	5,388.3	1,030.4	2,223.8	2,451.0	3.00	-3.00	
6,070.7	0.00	0.00	5,459.0	1,031.0	2,225.0	2,452.3	3.00	-3.00	EOD; Inc=0° - O04 696 MF11E-3 TGT (6.13.11)
6,100.0	0.07	239.59	5,488.3	1,031.0	2,225.0	2,452.2	0.25	0.25	
6,200.0	0.32	239.59	5,588.3	1,030.8	2,224.7	2,451.9	0.25	0.25	
6,227.6	0.39	239.59	5,615.9	1,030.7	2,224.5	2,451.7	0.25	0.25	
6,300.0	0.39	239.59	5,688.3	1,030.5	2,224.1	2,451.2	0.00	0.00	
6,400.0	0.39	239.59	5,788.3	1,030.1	2,223.5	2,450.6	0.00	0.00	
6,500.0	0.39	239.59	5,888.3	1,029.8	2,222.9	2,449.9	0.00	0.00	
6,600.0	0.39	239.59	5,988.3	1,029.4	2,222.3	2,449.2	0.00	0.00	
6,700.0	0.39	239.59	6,088.3	1,029.1	2,221.7	2,448.5	0.00	0.00	
6,800.0	0.39	239.59	6,188.3	1,028.7	2,221.2	2,447.8	0.00	0.00	
6,900.0	0.39	239.59	6,288.3	1,028.4	2,220.6	2,447.1	0.00	0.00	
7,000.0	0.39	239.59	6,388.3	1,028.1	2,220.0	2,446.5	0.00	0.00	
7,100.0	0.39	239.59	6,488.3	1,027.7	2,219.4	2,445.8	0.00	0.00	

Planning Report

Database:	USA EDM 5000 US Multi Users DB	Local Co-ordinate Reference:	Well NP MF11E-3 O04 696 (was 13A-3)
Company:	EnCana Oil & Gas (USA) Inc	TVD Reference:	WELL @ 6044.0ft (Original Well Elev)
Project:	North Piceance	MD Reference:	WELL @ 6044.0ft (Original Well Elev)
Site:	O04 696 (3rd)	North Reference:	True
Well:	NP MF11E-3 O04 696 (was 13A-3)	Survey Calculation Method:	Minimum Curvature
Wellbore:	DD		
Design:	Plan #2		

Planned Survey									
Measured Depth (ft)	Inclination (°)	Azimuth (°)	Vertical Depth (ft)	+N/-S (ft)	+E/-W (ft)	Vertical Section (ft)	Dogleg Rate (°/100ft)	Build Rate (°/100ft)	Comments / Formations
7,200.0	0.39	239.59	6,588.3	1,027.4	2,218.8	2,445.1	0.00	0.00	
7,300.0	0.39	239.59	6,688.3	1,027.0	2,218.2	2,444.4	0.00	0.00	
7,400.0	0.39	239.59	6,788.3	1,026.7	2,217.6	2,443.7	0.00	0.00	
7,500.0	0.39	239.59	6,888.3	1,026.3	2,217.0	2,443.1	0.00	0.00	
7,600.0	0.39	239.59	6,988.3	1,026.0	2,216.4	2,442.4	0.00	0.00	
7,700.0	0.39	239.59	7,088.3	1,025.6	2,215.8	2,441.7	0.00	0.00	
7,800.0	0.39	239.59	7,188.3	1,025.3	2,215.3	2,441.0	0.00	0.00	
7,900.0	0.39	239.59	7,288.3	1,024.9	2,214.7	2,440.3	0.00	0.00	
8,000.0	0.39	239.59	7,388.3	1,024.6	2,214.1	2,439.7	0.00	0.00	
8,100.0	0.39	239.59	7,488.3	1,024.2	2,213.5	2,439.0	0.00	0.00	
8,200.0	0.39	239.59	7,588.2	1,023.9	2,212.9	2,438.3	0.00	0.00	
8,300.0	0.39	239.59	7,688.2	1,023.5	2,212.3	2,437.6	0.00	0.00	
8,400.0	0.39	239.59	7,788.2	1,023.2	2,211.7	2,436.9	0.00	0.00	
8,500.0	0.39	239.59	7,888.2	1,022.9	2,211.1	2,436.2	0.00	0.00	
8,600.0	0.39	239.59	7,988.2	1,022.5	2,210.5	2,435.6	0.00	0.00	
8,700.0	0.39	239.59	8,088.2	1,022.2	2,209.9	2,434.9	0.00	0.00	
8,800.0	0.39	239.59	8,188.2	1,021.8	2,209.3	2,434.2	0.00	0.00	
8,900.0	0.39	239.59	8,288.2	1,021.5	2,208.8	2,433.5	0.00	0.00	
9,000.0	0.39	239.59	8,388.2	1,021.1	2,208.2	2,432.8	0.00	0.00	
9,030.8	0.39	239.59	8,419.0	1,021.0	2,208.0	2,432.6	0.00	0.00	Rollins - O04 696 MF11E-3 BHL (6.13.11)
9,100.0	0.39	239.59	8,488.2	1,020.8	2,207.6	2,432.2	0.00	0.00	
9,180.8	0.39	239.59	8,569.0	1,020.5	2,207.1	2,431.6	0.00	0.00	Drillers TD @ 8569' TVD
9,200.0	0.39	239.59	8,588.2	1,020.4	2,207.0	2,431.5	0.00	0.00	
9,300.0	0.39	239.59	8,688.2	1,020.1	2,206.4	2,430.8	0.00	0.00	
9,400.0	0.39	239.59	8,788.2	1,019.7	2,205.8	2,430.1	0.00	0.00	
9,500.0	0.39	239.59	8,888.2	1,019.4	2,205.2	2,429.4	0.00	0.00	
9,600.0	0.39	239.59	8,988.2	1,019.0	2,204.6	2,428.7	0.00	0.00	
9,700.0	0.39	239.59	9,088.2	1,018.7	2,204.0	2,428.1	0.00	0.00	
9,800.0	0.39	239.59	9,188.2	1,018.3	2,203.4	2,427.4	0.00	0.00	
9,900.0	0.39	239.59	9,288.2	1,018.0	2,202.9	2,426.7	0.00	0.00	
10,000.0	0.39	239.59	9,388.2	1,017.7	2,202.3	2,426.0	0.00	0.00	
10,100.0	0.39	239.59	9,488.2	1,017.3	2,201.7	2,425.3	0.00	0.00	
10,200.0	0.39	239.59	9,588.2	1,017.0	2,201.1	2,424.7	0.00	0.00	
10,300.0	0.39	239.59	9,688.2	1,016.6	2,200.5	2,424.0	0.00	0.00	
10,400.0	0.39	239.59	9,788.2	1,016.3	2,199.9	2,423.3	0.00	0.00	
10,500.0	0.39	239.59	9,888.2	1,015.9	2,199.3	2,422.6	0.00	0.00	
10,600.0	0.39	239.59	9,988.2	1,015.6	2,198.7	2,421.9	0.00	0.00	
10,611.8	0.39	239.59	10,000.0	1,015.5	2,198.7	2,421.9	0.00	0.00	Permit TD @ 10000' TVD

Targets									
Target Name	Dip Angle (°)	Dip Dir. (°)	TVD (ft)	+N/-S (ft)	+E/-W (ft)	Northing (ft)	Easting (ft)	Latitude	Longitude
O04 696 MF11E-3 TGT - hit/miss target - Shape - Point	0.00	0.00	5,459.0	1,031.0	2,225.0	1,636,977.96	2,266,985.54	39° 33' 12.54 N	108° 5' 59.96 W
O04 696 MF11E-3 BHL - plan hits target center - Rectangle (sides W30.0 H50.0 D0.0)	0.00	0.00	8,419.0	1,021.0	2,208.0	1,636,968.47	2,266,968.24	39° 33' 12.44 N	108° 6' 0.18 W

Planning Report

Database:	USA EDM 5000 US Multi Users DB	Local Co-ordinate Reference:	Well NP MF11E-3 O04 696 (was 13A-3)
Company:	EnCana Oil & Gas (USA) Inc	TVD Reference:	WELL @ 6044.0ft (Original Well Elev)
Project:	North Piceance	MD Reference:	WELL @ 6044.0ft (Original Well Elev)
Site:	O04 696 (3rd)	North Reference:	True
Well:	NP MF11E-3 O04 696 (was 13A-3)	Survey Calculation Method:	Minimum Curvature
Wellbore:	DD		
Design:	Plan #2		

Formations					
Measured Depth (ft)	Vertical Depth (ft)	Name	Lithology	Dip (°)	Dip Direction (°)
5,523.2	4,919.0	Williams Fork		0.00	
5,564.8	4,959.0	Top of Gas; Inc=15°		0.00	
9,030.8	8,419.0	Rollins		0.00	

Plan Annotations				
Measured Depth (ft)	Vertical Depth (ft)	Local Coordinates		Comment
		+N/-S (ft)	+E/-W (ft)	
200.0	200.0	0.0	0.0	KOP @ 200'
1,202.9	1,157.5	108.2	233.5	EOB; Inc=30°
5,067.8	4,501.5	922.8	1,991.5	Start Drop -3.00
6,070.7	5,459.0	1,031.0	2,225.0	EOD; Inc=0°
9,180.8	8,569.0	1,030.7	2,224.5	Drillers TD @ 8569' TVD
10,611.8	10,000.0	1,021.0	2,208.0	Permit TD @ 10000' TVD

EnCana Oil & Gas (USA) Inc

North Piceance

O04 696 (3rd)

NP MF11E-3 O04 696 (was 13A-3)

DD

Plan #2

Anticollision Report

15 June, 2011

Anticollision Report

Company:	EnCana Oil & Gas (USA) Inc	Local Co-ordinate Reference:	Well NP MF11E-3 O04 696 (was 13A-3)
Project:	North Piceance	TVD Reference:	WELL @ 6044.0ft (Original Well Elev)
Reference Site:	O04 696 (3rd)	MD Reference:	WELL @ 6044.0ft (Original Well Elev)
Site Error:	0.0ft	North Reference:	True
Reference Well:	NP MF11E-3 O04 696 (was 13A-3)	Survey Calculation Method:	Minimum Curvature
Well Error:	0.0ft	Output errors are at	2.00 sigma
Reference Wellbore	DD	Database:	USA EDM 5000 US Multi Users DB
Reference Design:	Plan #2	Offset TVD Reference:	Offset Datum

Reference	Plan #2		
Filter type:	NO GLOBAL FILTER: Using user defined selection & filtering criteria		
Interpolation Method:	MD Interval 100.0ft	Error Model:	Systematic Ellipse
Depth Range:	Unlimited	Scan Method:	Closest Approach 3D
Results Limited by:	Maximum center-center distance of 100.0ft	Error Surface:	Elliptical Conic
Warning Levels Evaluated at:	2.00 Sigma		

Survey Tool Program		Date	6/15/2011		
From (ft)	To (ft)	Survey (Wellbore)	Tool Name	Description	
0.0	10,611.8	Plan #2 (DD)	MWD	Geolink MWD	

Anticollision Report

Company:	EnCana Oil & Gas (USA) Inc	Local Co-ordinate Reference:	Well NP MF11E-3 004 696 (was 13A-3)
Project:	North Piceance	TVD Reference:	WELL @ 6044.0ft (Original Well Elev)
Reference Site:	004 696 (3rd)	MD Reference:	WELL @ 6044.0ft (Original Well Elev)
Site Error:	0.0ft	North Reference:	True
Reference Well:	NP MF11E-3 004 696 (was 13A-3)	Survey Calculation Method:	Minimum Curvature
Well Error:	0.0ft	Output errors are at	2.00 sigma
Reference Wellbore	DD	Database:	USA EDM 5000 US Multi Users DB
Reference Design:	Plan #2	Offset TVD Reference:	Offset Datum

Summary

Site Name	Reference Measured Depth (ft)	Offset Measured Depth (ft)	Distance Between Centres (ft)	Between Ellipses (ft)	Separation Factor	Warning
Offset Well - Wellbore - Design						
N04 696 Pad (NESW Sec4-T6S-R96W)						
NP MF16A N04 696 - DD - DD						Out of range
NP MF16A N04 696 - DD - Plan #1						Out of range
NP MF16A N04 696 - DD - Plan#2						Out of range
O04 696 (3rd)						
NP MF01D-9 O04 696 (was 17C-4) - DD - Plan #2	200.0	200.0	63.2	62.6	101.702	CC, ES
NP MF01D-9 O04 696 (was 17C-4) - DD - Plan #2	500.0	492.0	93.8	92.1	54.101	SF
NP MF02A-9 O04 696 (was 18C-4) - DD - Plan #2	200.0	200.0	91.3	90.7	146.978	CC, ES
NP MF02A-9 O04 696 (was 18C-4) - DD - Plan #2	300.0	295.7	95.9	94.9	99.266	SF
NP MF06A-3 O04 696 (was 11C-3) - DD - Plan #2	300.5	299.3	28.0	27.0	28.733	CC, ES
NP MF06A-3 O04 696 (was 11C-3) - DD - Plan #2	500.0	494.5	35.7	33.9	19.725	SF
NP MF06B-3 O04 696 (was 15A-4) - DD - Plan #2	200.0	200.0	48.6	48.0	78.256	CC
NP MF06B-3 O04 696 (was 15A-4) - DD - Plan #2	300.0	297.5	48.9	47.9	50.502	ES
NP MF06B-3 O04 696 (was 15A-4) - DD - Plan #2	1,000.0	973.8	96.9	90.4	14.829	SF
NP MF06C-3 O04 696 (was 09C-4) - DD - Plan #2	354.2	350.5	55.9	54.7	47.749	CC, ES
NP MF06C-3 O04 696 (was 09C-4) - DD - Plan #2	900.0	878.2	96.3	91.2	18.767	SF
NP MF06E-3 O04 696 (was 11B-3) - DD - Plan #2	662.7	649.8	55.8	53.5	23.757	CC
NP MF06E-3 O04 696 (was 11B-3) - DD - Plan #2	700.0	686.0	55.9	53.3	22.086	ES
NP MF06E-3 O04 696 (was 11B-3) - DD - Plan #2	1,300.0	1,263.6	95.6	84.3	8.496	SF
NP MF08B-9 O04 696 (was 01B-9) - DD - Plan #2	200.0	200.0	84.1	83.5	135.424	CC, ES
NP MF08B-9 O04 696 (was 01B-9) - DD - Plan #2	300.0	296.9	88.1	87.2	90.751	SF
NP MF11A-3 O04 696 (was 12C-3) - DD - Plan #2	615.8	608.5	35.7	33.4	15.513	CC, ES
NP MF11A-3 O04 696 (was 12C-3) - DD - Plan #2	1,200.0	1,182.6	99.1	89.3	10.164	SF
NP MF11B-3 O04 696 (was 14A-3) - DD - Plan #2	200.0	200.0	29.1	28.5	46.868	CC
NP MF11B-3 O04 696 (was 14A-3) - DD - Plan #2	500.0	495.4	29.6	27.9	17.606	ES
NP MF11B-3 O04 696 (was 14A-3) - DD - Plan #2	1,300.0	1,281.0	69.5	57.6	5.842	SF
NP MF11D-3 O04 696 (was 14B-3) - DD - Plan #2	465.0	462.0	21.8	20.2	14.105	CC
NP MF11D-3 O04 696 (was 14B-3) - DD - Plan #2	800.0	793.2	22.7	19.6	7.315	ES
NP MF11D-3 O04 696 (was 14B-3) - DD - Plan #2	2,700.0	2,686.8	96.0	58.4	2.556	SF
NP MF11G-3 O04 696 (was 14C-3) - DD - Plan #2	200.0	200.0	7.7	7.1	12.356	CC, ES
NP MF11G-3 O04 696 (was 14C-3) - DD - Plan #2	1,500.0	1,512.6	95.3	82.2	7.263	SF
NP MF14A-3 O04 696 (was 13B-3) - DD - Plan #2	200.0	200.0	8.1	7.4	12.962	CC, ES
NP MF14A-3 O04 696 (was 13B-3) - DD - Plan #2	700.0	698.0	24.2	20.6	6.758	SF
NP MF14C-3 O04 696 (was 14D-3) - DD - Plan #2	200.0	200.0	11.2	10.6	18.089	CC, ES
NP MF14C-3 O04 696 (was 14D-3) - DD - Plan #2	600.0	599.0	28.4	25.7	10.537	SF
NP MF14D-3 O04 696 (was 19A-3) - DD - Plan #2	200.0	200.0	27.4	26.7	44.029	CC, ES
NP MF14D-3 O04 696 (was 19A-3) - DD - Plan #2	900.0	904.6	91.2	86.6	19.654	SF
NP MF14E-3 O04 696 (was 19B-3) - DD - Plan #2	200.0	200.0	28.5	27.9	45.870	CC, ES
NP MF14E-3 O04 696 (was 19B-3) - DD - Plan #2	800.0	794.4	90.1	85.6	20.182	SF
NP MF15A-4 O04 696 (was 11D-3) - DD - Plan #2	318.9	318.0	19.9	18.9	18.973	CC, ES
NP MF15A-4 O04 696 (was 11D-3) - DD - Plan #2	400.0	397.8	21.7	20.4	15.920	SF
NP MF15D-4 O04 696 (was 01B-9) - DD - Plan #2	200.0	200.0	83.7	83.0	134.634	CC, ES
NP MF15D-4 O04 696 (was 01B-9) - DD - Plan #2	400.0	398.1	93.9	92.6	70.950	SF
NP MF18B-4 O04 696 (was 01A-9) - DD - Plan #2	200.0	200.0	91.8	91.2	147.736	CC, ES
NP MF18B-4 O04 696 (was 01A-9) - DD - Plan #2	300.0	295.9	96.1	95.2	99.396	SF
NP MF19A-3 O04 696 (was 17B-4) - DD - Plan #2	200.0	200.0	35.8	35.2	57.662	CC, ES
NP MF19A-3 O04 696 (was 17B-4) - DD - Plan #2	700.0	698.5	82.8	79.7	26.616	SF
NP MF19C-3 O04 696 (was 20B-3) - DD - Plan #2	200.0	200.0	36.9	36.3	59.358	CC, ES
NP MF19C-3 O04 696 (was 20B-3) - DD - Plan #2	700.0	692.0	95.2	91.8	28.590	SF
NP MF19D-3 O04 696 (was 19C-3) - DD - Plan #2	200.0	200.0	55.5	54.9	89.330	CC, ES
NP MF19D-3 O04 696 (was 19C-3) - DD - Plan #2	600.0	597.3	94.1	92.0	44.065	SF
NP MF19E-3 O04 696 (was 19D-3) - DD - Plan #2	200.0	200.0	56.2	55.5	90.384	CC, ES
NP MF19E-3 O04 696 (was 19D-3) - DD - Plan #2	600.0	594.0	96.9	94.4	38.757	SF

CC - Min centre to center distance or convergent point, SF - min separation factor, ES - min ellipse separation

Anticollision Report

Company:	EnCana Oil & Gas (USA) Inc	Local Co-ordinate Reference:	Well NP MF11E-3 O04 696 (was 13A-3)
Project:	North Piceance	TVD Reference:	WELL @ 6044.0ft (Original Well Elev)
Reference Site:	O04 696 (3rd)	MD Reference:	WELL @ 6044.0ft (Original Well Elev)
Site Error:	0.0ft	North Reference:	True
Reference Well:	NP MF11E-3 O04 696 (was 13A-3)	Survey Calculation Method:	Minimum Curvature
Well Error:	0.0ft	Output errors are at	2.00 sigma
Reference Wellbore	DD	Database:	USA EDM 5000 US Multi Users DB
Reference Design:	Plan #2	Offset TVD Reference:	Offset Datum

Summary						
Site Name	Reference Measured Depth (ft)	Offset Measured Depth (ft)	Distance Between Centres (ft)	Distance Between Ellipses (ft)	Separation Factor	Warning
Offset Well - Wellbore - Design						
O04 696 (3rd)						
NP MF20F-3 O04 696 (was 20D-3) - DD - Plan #2	200.0	200.0	63.8	63.2	102.644	CC, ES
NP MF20F-3 O04 696 (was 20D-3) - DD - Plan #2	500.0	494.7	90.3	88.4	48.560	SF

Anticollision Report

Company:	EnCana Oil & Gas (USA) Inc	Local Co-ordinate Reference:	Well NP MF11E-3 O04 696 (was 13A-3)
Project:	North Piceance	TVD Reference:	WELL @ 6044.0ft (Original Well Elev)
Reference Site:	O04 696 (3rd)	MD Reference:	WELL @ 6044.0ft (Original Well Elev)
Site Error:	0.0ft	North Reference:	True
Reference Well:	NP MF11E-3 O04 696 (was 13A-3)	Survey Calculation Method:	Minimum Curvature
Well Error:	0.0ft	Output errors are at	2.00 sigma
Reference Wellbore	DD	Database:	USA EDM 5000 US Multi Users DB
Reference Design:	Plan #2	Offset TVD Reference:	Offset Datum

Offset Design O04 696 (3rd) - NP MF01D-9 O04 696 (was 17C-4) - DD - Plan #2													Offset Site Error: 0.0 ft
Survey Program: 0-MWD													Offset Well Error: 0.0 ft
Reference		Offset		Semi Major Axis		Distance							
Measured Depth (ft)	Vertical Depth (ft)	Measured Depth (ft)	Vertical Depth (ft)	Reference (ft)	Offset (ft)	Highside Toolface (°)	Offset Wellbore Centre +N/-S (ft)	+E/-W (ft)	Between Centres (ft)	Between Ellipses (ft)	Total Uncertainty Axis	Separation Factor	Warning
0.0	0.0	0.0	0.0	0.0	0.0	-141.70	-49.6	-39.2	63.2				
100.0	100.0	100.0	100.0	0.1	0.1	-141.70	-49.6	-39.2	63.2	62.9	0.27	232.088	
200.0	200.0	200.0	200.0	0.3	0.3	-141.70	-49.6	-39.2	63.2	62.6	0.62	101.702 CC, ES	
300.0	300.0	298.9	298.9	0.5	0.5	153.70	-50.2	-39.0	65.9	65.0	0.97	67.963	
400.0	399.6	396.2	396.1	0.7	0.7	153.12	-55.0	-37.8	76.0	74.7	1.33	57.042	
500.0	498.8	492.0	491.4	1.0	0.9	151.59	-64.4	-35.4	93.8	92.1	1.73	54.101 SF	

Anticollision Report

Company:	EnCana Oil & Gas (USA) Inc	Local Co-ordinate Reference:	Well NP MF11E-3 O04 696 (was 13A-3)
Project:	North Piceance	TVD Reference:	WELL @ 6044.0ft (Original Well Elev)
Reference Site:	O04 696 (3rd)	MD Reference:	WELL @ 6044.0ft (Original Well Elev)
Site Error:	0.0ft	North Reference:	True
Reference Well:	NP MF11E-3 O04 696 (was 13A-3)	Survey Calculation Method:	Minimum Curvature
Well Error:	0.0ft	Output errors are at	2.00 sigma
Reference Wellbore	DD	Database:	USA EDM 5000 US Multi Users DB
Reference Design:	Plan #2	Offset TVD Reference:	Offset Datum

Offset Design													Offset Site Error:		0.0 ft
Survey Program: 0-MWD													Offset Well Error:		0.0 ft
Reference		Offset		Semi Major Axis			Distance							Warning	
Measured Depth	Vertical Depth	Measured Depth	Vertical Depth	Reference	Offset	Highside Toolface	Offset Wellbore Centre	Between Centres	Between Ellipses	Total Uncertainty	Separation				
(ft)	(ft)	(ft)	(ft)	(ft)	(ft)	(°)	+N/-S (ft)	+E/-W (ft)	(ft)	(ft)	Axis	Factor			
0.0	0.0	0.0	0.0	0.0	0.0	-141.86	-71.8	-56.4	91.3						
100.0	100.0	100.0	100.0	0.1	0.1	-141.86	-71.8	-56.4	91.3	91.1	0.27	335.412			
200.0	200.0	200.0	200.0	0.3	0.3	-141.86	-71.8	-56.4	91.3	90.7	0.62	146.978 CC, ES			
300.0	300.0	295.7	295.7	0.5	0.5	152.95	-74.2	-56.8	95.9	94.9	0.97	99.266 SF			

Anticollision Report

Company:	EnCana Oil & Gas (USA) Inc	Local Co-ordinate Reference:	Well NP MF11E-3 O04 696 (was 13A-3)
Project:	North Piceance	TVD Reference:	WELL @ 6044.0ft (Original Well Elev)
Reference Site:	O04 696 (3rd)	MD Reference:	WELL @ 6044.0ft (Original Well Elev)
Site Error:	0.0ft	North Reference:	True
Reference Well:	NP MF11E-3 O04 696 (was 13A-3)	Survey Calculation Method:	Minimum Curvature
Well Error:	0.0ft	Output errors are at	2.00 sigma
Reference Wellbore	DD	Database:	USA EDM 5000 US Multi Users DB
Reference Design:	Plan #2	Offset TVD Reference:	Offset Datum

Offset Design		O04 696 (3rd) - NP MF06A-3 O04 696 (was 11C-3) - DD - Plan #2											Offset Site Error:		0.0 ft			
Survey Program:		0-MWD													Offset Well Error:		0.0 ft	
Reference		Offset		Semi Major Axis			Distance											
Measured Depth (ft)	Vertical Depth (ft)	Measured Depth (ft)	Vertical Depth (ft)	Reference (ft)	Offset (ft)	Highside Toolface (°)	Offset Wellbore Centre +N/-S (ft)	+E/-W (ft)	Between Centres (ft)	Between Ellipses (ft)	Total Uncertainty Axis	Separation Factor	Warning					
0.0	0.0	0.0	0.0	0.0	0.0	37.75	22.3	17.2	28.1									
100.0	100.0	100.0	100.0	0.1	0.1	37.75	22.3	17.2	28.1	27.9	0.27	103.377						
200.0	200.0	200.0	200.0	0.3	0.3	37.75	22.3	17.2	28.1	27.5	0.62	45.300						
300.0	300.0	298.8	298.7	0.5	0.5	-33.03	24.8	17.2	28.0	27.0	0.97	28.791						
300.5	300.5	299.3	299.3	0.5	0.5	-33.09	24.8	17.2	28.0	27.0	0.97	28.733	CC, ES					
400.0	399.6	397.1	396.7	0.7	0.7	-49.40	32.4	17.2	29.2	27.9	1.35	21.643						
500.0	498.8	494.5	493.3	1.0	1.0	-70.72	44.9	17.2	35.7	33.9	1.81	19.725	SF					
600.0	597.1	590.6	587.9	1.4	1.3	-87.77	62.1	17.2	49.9	47.5	2.41	20.692						
700.0	694.3	684.9	679.7	1.8	1.7	-98.37	83.5	17.2	71.5	68.3	3.16	22.629						
800.0	790.2	780.5	771.7	2.4	2.2	-104.46	109.2	18.6	98.0	94.0	4.06	24.167						

Anticollision Report

Company:	EnCana Oil & Gas (USA) Inc	Local Co-ordinate Reference:	Well NP MF11E-3 O04 696 (was 13A-3)
Project:	North Piceance	TVD Reference:	WELL @ 6044.0ft (Original Well Elev)
Reference Site:	O04 696 (3rd)	MD Reference:	WELL @ 6044.0ft (Original Well Elev)
Site Error:	0.0ft	North Reference:	True
Reference Well:	NP MF11E-3 O04 696 (was 13A-3)	Survey Calculation Method:	Minimum Curvature
Well Error:	0.0ft	Output errors are at	2.00 sigma
Reference Wellbore	DD	Database:	USA EDM 5000 US Multi Users DB
Reference Design:	Plan #2	Offset TVD Reference:	Offset Datum

Offset Design												O04 696 (3rd) - NP MF06B-3 O04 696 (was 15A-4) - DD - Plan #2		Offset Site Error:		0.0 ft	
Survey Program:												0-MWD		Offset Well Error:		0.0 ft	
Reference		Offset		Semi Major Axis			Distance										
Measured Depth	Vertical Depth	Measured Depth	Vertical Depth	Reference	Offset	Highside Toolface	Offset Wellbore Centre	Between Centres	Between Ellipses	Total Uncertainty Axis	Separation Factor	Warning					
(ft)	(ft)	(ft)	(ft)	(ft)	(ft)	(°)	+N/-S (ft)	+E/-W (ft)	(ft)	(ft)							
0.0	0.0	0.0	0.0	0.0	0.0	37.75	38.4	29.8	48.6								
100.0	100.0	100.0	100.0	0.1	0.1	37.75	38.4	29.8	48.6	48.4	0.27	178.583					
200.0	200.0	200.0	200.0	0.3	0.3	37.75	38.4	29.8	48.6	48.0	0.62	78.256	CC				
300.0	300.0	297.5	297.5	0.5	0.5	-28.75	40.4	31.3	48.9	47.9	0.97	50.502	ES				
400.0	399.6	394.9	394.6	0.7	0.7	-32.70	46.3	35.9	49.8	48.4	1.33	37.520					
500.0	498.8	492.2	491.1	1.0	1.0	-38.91	56.0	43.5	51.8	50.0	1.73	29.943					
600.0	597.1	589.2	586.6	1.4	1.3	-46.65	69.5	54.2	55.5	53.3	2.24	24.757					
700.0	694.3	686.0	680.8	1.8	1.7	-54.93	86.8	67.8	61.6	58.6	2.95	20.871					
800.0	790.2	782.3	773.4	2.4	2.3	-62.81	107.7	84.2	70.5	66.5	3.91	18.023					
900.0	884.4	878.3	864.1	3.0	2.8	-69.67	132.2	103.4	82.2	77.1	5.11	16.082					
1,000.0	976.8	973.8	952.8	3.8	3.5	-75.31	160.0	125.3	96.9	90.4	6.53	14.829	SF				

Anticollision Report

Company:	EnCana Oil & Gas (USA) Inc	Local Co-ordinate Reference:	Well NP MF11E-3 O04 696 (was 13A-3)
Project:	North Piceance	TVD Reference:	WELL @ 6044.0ft (Original Well Elev)
Reference Site:	O04 696 (3rd)	MD Reference:	WELL @ 6044.0ft (Original Well Elev)
Site Error:	0.0ft	North Reference:	True
Reference Well:	NP MF11E-3 O04 696 (was 13A-3)	Survey Calculation Method:	Minimum Curvature
Well Error:	0.0ft	Output errors are at	2.00 sigma
Reference Wellbore	DD	Database:	USA EDM 5000 US Multi Users DB
Reference Design:	Plan #2	Offset TVD Reference:	Offset Datum

Offset Design													004 696 (3rd) - NP MF06C-3 004 696 (was 09C-4) - DD - Plan #2		Offset Site Error:		0.0 ft	
Survey Program: 0-MWD													Offset Well Error:		0.0 ft			
Reference		Offset		Semi Major Axis			Distance							Warning				
Measured Depth (ft)	Vertical Depth (ft)	Measured Depth (ft)	Vertical Depth (ft)	Reference (ft)	Offset (ft)	Highside Toolface (°)	Offset Wellbore Centre +N/-S (ft)	+E/-W (ft)	Between Centres (ft)	Between Ellipses (ft)	Total Uncertainty Axis	Separation Factor						
0.0	0.0	0.0	0.0	0.0	0.0	37.75	44.5	34.5	56.3									
100.0	100.0	100.0	100.0	0.1	0.1	37.75	44.5	34.5	56.3	56.0	0.27	206.780						
200.0	200.0	200.0	200.0	0.3	0.3	37.75	44.5	34.5	56.3	55.7	0.62	90.612						
300.0	300.0	297.7	297.6	0.5	0.5	-30.20	47.0	34.4	56.0	55.1	0.97	57.721						
354.2	354.0	350.5	350.3	0.6	0.6	-34.07	50.4	34.4	55.9	54.7	1.17	47.749	CC, ES					
400.0	399.6	394.9	394.5	0.7	0.7	-38.42	54.4	34.4	56.1	54.8	1.34	41.889						
500.0	498.8	491.7	490.6	1.0	0.9	-48.68	65.5	37.1	58.3	56.6	1.75	33.325						
600.0	597.1	588.4	586.1	1.4	1.3	-58.84	79.8	43.4	63.5	61.2	2.28	27.873						
700.0	694.3	685.1	680.7	1.8	1.6	-67.90	97.5	53.1	71.7	68.7	3.00	23.881						
800.0	790.2	781.7	774.0	2.4	2.1	-75.38	118.3	66.4	82.7	78.8	3.96	20.909						
900.0	884.4	878.2	866.0	3.0	2.7	-81.25	142.3	83.2	96.3	91.2	5.13	18.767	SF					

Anticollision Report

Company:	EnCana Oil & Gas (USA) Inc	Local Co-ordinate Reference:	Well NP MF11E-3 O04 696 (was 13A-3)
Project:	North Piceance	TVD Reference:	WELL @ 6044.0ft (Original Well Elev)
Reference Site:	O04 696 (3rd)	MD Reference:	WELL @ 6044.0ft (Original Well Elev)
Site Error:	0.0ft	North Reference:	True
Reference Well:	NP MF11E-3 O04 696 (was 13A-3)	Survey Calculation Method:	Minimum Curvature
Well Error:	0.0ft	Output errors are at	2.00 sigma
Reference Wellbore	DD	Database:	USA EDM 5000 US Multi Users DB
Reference Design:	Plan #2	Offset TVD Reference:	Offset Datum

Offset Design O04 696 (3rd) - NP MF06E-3 O04 696 (was 11B-3) - DD - Plan #2													Offset Site Error: 0.0 ft			
Survey Program: 0-MWD															Offset Well Error: 0.0 ft	
Reference		Offset		Semi Major Axis			Distance							Warning		
Measured Depth (ft)	Vertical Depth (ft)	Measured Depth (ft)	Vertical Depth (ft)	Reference (ft)	Offset (ft)	Highside Toolface (°)	Offset Wellbore Centre +N/-S (ft)	+E/-W (ft)	Between Centres (ft)	Between Ellipses (ft)	Total Uncertainty Axis	Separation Factor				
0.0	0.0	0.0	0.0	0.0	0.0	46.46	39.5	41.5	57.3							
100.0	100.0	100.0	100.0	0.1	0.1	46.46	39.5	41.5	57.3	57.0	0.27	210.351				
200.0	200.0	200.0	200.0	0.3	0.3	46.46	39.5	41.5	57.3	56.7	0.62	92.176				
300.0	300.0	297.3	297.2	0.5	0.5	-18.59	40.4	43.8	57.2	56.2	0.97	59.106				
400.0	399.6	394.6	394.2	0.7	0.7	-18.31	43.2	50.7	56.8	55.5	1.32	43.040				
500.0	498.8	491.8	490.7	1.0	1.0	-18.27	48.1	61.9	56.3	54.7	1.68	33.474				
600.0	597.1	588.9	586.3	1.4	1.3	-20.30	56.7	76.3	55.9	53.9	2.07	27.022				
662.7	658.2	649.8	645.8	1.6	1.6	-22.72	64.0	86.9	55.8	53.5	2.35	23.757 CC				
700.0	694.3	686.0	681.0	1.8	1.7	-24.59	69.1	93.8	55.9	53.3	2.53	22.086 ES				
800.0	790.2	782.9	774.4	2.4	2.2	-30.99	85.1	114.2	56.7	53.5	3.17	17.906				
900.0	884.4	879.7	866.2	3.0	2.8	-39.06	104.7	137.6	59.0	54.9	4.11	14.344				
1,000.0	976.8	976.2	956.1	3.8	3.5	-47.98	127.9	163.8	63.6	58.1	5.47	11.631				
1,100.0	1,067.1	1,072.3	1,043.8	4.6	4.2	-56.76	154.5	192.7	71.0	63.8	7.20	9.855				
1,200.0	1,154.9	1,168.1	1,129.2	5.5	5.0	-64.64	184.4	224.3	81.4	72.2	9.22	8.827				
1,300.0	1,241.5	1,263.6	1,212.0	6.5	5.9	-70.25	217.5	258.3	95.6	84.3	11.25	8.496 SF				

Anticollision Report

Company:	EnCana Oil & Gas (USA) Inc	Local Co-ordinate Reference:	Well NP MF11E-3 O04 696 (was 13A-3)
Project:	North Piceance	TVD Reference:	WELL @ 6044.0ft (Original Well Elev)
Reference Site:	O04 696 (3rd)	MD Reference:	WELL @ 6044.0ft (Original Well Elev)
Site Error:	0.0ft	North Reference:	True
Reference Well:	NP MF11E-3 O04 696 (was 13A-3)	Survey Calculation Method:	Minimum Curvature
Well Error:	0.0ft	Output errors are at	2.00 sigma
Reference Wellbore	DD	Database:	USA EDM 5000 US Multi Users DB
Reference Design:	Plan #2	Offset TVD Reference:	Offset Datum

Offset Design O04 696 (3rd) - NP MF08B-9 O04 696 (was 01B-9) - DD - Plan #2													Offset Site Error:	0.0 ft
Survey Program: 0-MWD													Offset Well Error:	0.0 ft
Reference		Offset		Semi Major Axis			Distance					Separation Factor	Warning	
Measured Depth (ft)	Vertical Depth (ft)	Measured Depth (ft)	Vertical Depth (ft)	Reference (ft)	Offset (ft)	Highside Toolface (°)	Offset Wellbore Centre +N/-S (ft)	+E/-W (ft)	Between Centres (ft)	Between Ellipses (ft)	Total Uncertainty Axis			
0.0	0.0	0.0	0.0	0.0	0.0	-147.32	-70.8	-45.4	84.1					
100.0	100.0	100.0	100.0	0.1	0.1	-147.32	-70.8	-45.4	84.1	83.9	0.27	309.044		
200.0	200.0	200.0	200.0	0.3	0.3	-147.32	-70.8	-45.4	84.1	83.5	0.62	135.424 CC, ES		
300.0	300.0	296.9	296.8	0.5	0.5	147.22	-73.2	-44.9	88.1	87.2	0.97	90.751 SF		

Anticollision Report

Company:	EnCana Oil & Gas (USA) Inc	Local Co-ordinate Reference:	Well NP MF11E-3 O04 696 (was 13A-3)
Project:	North Piceance	TVD Reference:	WELL @ 6044.0ft (Original Well Elev)
Reference Site:	O04 696 (3rd)	MD Reference:	WELL @ 6044.0ft (Original Well Elev)
Site Error:	0.0ft	North Reference:	True
Reference Well:	NP MF11E-3 O04 696 (was 13A-3)	Survey Calculation Method:	Minimum Curvature
Well Error:	0.0ft	Output errors are at	2.00 sigma
Reference Wellbore	DD	Database:	USA EDM 5000 US Multi Users DB
Reference Design:	Plan #2	Offset TVD Reference:	Offset Datum

Offset Design												004 696 (3rd) - NP MF11A-3 O04 696 (was 12C-3) - DD - Plan #2		Offset Site Error:		0.0 ft	
Survey Program:												0-MWD		Offset Well Error:		0.0 ft	
Reference		Offset		Semi Major Axis			Distance							Warning			
Measured Depth (ft)	Vertical Depth (ft)	Measured Depth (ft)	Vertical Depth (ft)	Reference (ft)	Offset (ft)	Highside Toolface (°)	Offset Wellbore Centre +N/-S (ft)	+E/-W (ft)	Between Centres (ft)	Between Ellipses (ft)	Total Uncertainty Axis	Separation Factor					
0.0	0.0	0.0	0.0	0.0	0.0	47.18	33.4	36.0	49.1								
100.0	100.0	100.0	100.0	0.1	0.1	47.18	33.4	36.0	49.1	48.9	0.27	180.419					
200.0	200.0	200.0	200.0	0.3	0.3	47.18	33.4	36.0	49.1	48.5	0.62	79.060					
300.0	300.0	300.0	300.0	0.5	0.5	-18.97	33.4	36.0	46.6	45.7	0.97	48.056					
400.0	399.6	397.5	397.5	0.7	0.7	-22.81	35.3	37.6	41.8	40.5	1.32	31.684					
500.0	498.8	495.3	494.9	1.0	0.9	-30.85	41.0	42.4	37.8	36.1	1.70	22.228					
600.0	597.1	593.1	591.9	1.4	1.1	-43.69	50.6	50.5	35.7	33.5	2.20	16.263					
615.8	612.5	608.5	607.2	1.4	1.2	-46.10	52.4	52.0	35.7	33.4	2.30	15.513	CC, ES				
700.0	694.3	690.9	688.1	1.8	1.5	-59.73	63.9	61.7	37.2	34.2	2.95	12.601					
800.0	790.2	788.6	783.3	2.4	1.9	-74.93	81.0	76.0	43.2	39.2	3.99	10.815					
900.0	884.4	886.2	877.1	3.0	2.4	-86.46	101.8	93.4	53.6	48.4	5.22	10.256					
1,000.0	976.8	984.0	969.4	3.8	3.0	-94.24	126.2	113.9	67.6	61.0	6.57	10.280					
1,100.0	1,067.1	1,083.0	1,061.4	4.6	3.6	-99.31	153.5	138.7	83.1	75.0	8.08	10.284					
1,200.0	1,154.9	1,182.6	1,151.9	5.5	4.4	-102.69	183.0	167.9	99.1	89.3	9.75	10.164	SF				

Anticollision Report

Company:	EnCana Oil & Gas (USA) Inc	Local Co-ordinate Reference:	Well NP MF11E-3 O04 696 (was 13A-3)
Project:	North Piceance	TVD Reference:	WELL @ 6044.0ft (Original Well Elev)
Reference Site:	O04 696 (3rd)	MD Reference:	WELL @ 6044.0ft (Original Well Elev)
Site Error:	0.0ft	North Reference:	True
Reference Well:	NP MF11E-3 O04 696 (was 13A-3)	Survey Calculation Method:	Minimum Curvature
Well Error:	0.0ft	Output errors are at	2.00 sigma
Reference Wellbore	DD	Database:	USA EDM 5000 US Multi Users DB
Reference Design:	Plan #2	Offset TVD Reference:	Offset Datum

Offset Design O04 696 (3rd) - NP MF11B-3 O04 696 (was 14A-3) - DD - Plan #2													Offset Site Error:	0.0 ft
Survey Program: 0-MWD													Offset Well Error:	0.0 ft
Reference		Offset		Semi Major Axis			Distance							Warning
Measured Depth (ft)	Vertical Depth (ft)	Measured Depth (ft)	Vertical Depth (ft)	Reference (ft)	Offset (ft)	Highside Toolface (°)	Offset Wellbore Centre +N/-S (ft)	+E/-W (ft)	Between Centres (ft)	Between Ellipses (ft)	Total Uncertainty Axis	Separation Factor		
0.0	0.0	0.0	0.0	0.0	0.0	53.80	17.2	23.5	29.1					
100.0	100.0	100.0	100.0	0.1	0.1	53.80	17.2	23.5	29.1	28.8	0.27	106.956		
200.0	200.0	200.0	200.0	0.3	0.3	53.80	17.2	23.5	29.1	28.5	0.62	46.868	CC	
300.0	300.0	298.5	298.5	0.5	0.5	-12.36	18.7	25.5	29.1	28.2	0.97	30.114		
400.0	399.6	397.0	396.6	0.7	0.7	-15.41	23.2	31.7	29.2	27.9	1.32	22.219		
500.0	498.8	495.4	494.3	1.0	1.0	-20.41	30.8	41.8	29.6	27.9	1.68	17.606	ES	
600.0	597.1	593.9	591.1	1.4	1.3	-27.10	41.3	56.0	30.5	28.4	2.11	14.435		
700.0	694.3	692.2	686.8	1.8	1.8	-34.99	54.7	74.2	32.2	29.5	2.70	11.902		
800.0	790.2	790.6	781.2	2.4	2.3	-43.35	71.1	96.3	35.0	31.4	3.57	9.804		
900.0	884.4	888.8	874.0	3.0	2.9	-51.41	90.3	122.3	39.1	34.3	4.75	8.215		
1,000.0	976.8	987.0	964.9	3.8	3.6	-58.64	112.3	152.0	44.5	38.3	6.25	7.129		
1,100.0	1,067.1	1,085.1	1,053.7	4.6	4.4	-64.78	137.0	185.4	51.4	43.4	7.99	6.425		
1,200.0	1,154.9	1,183.1	1,140.2	5.5	5.3	-69.85	164.4	222.5	59.5	49.5	9.96	5.973		
1,300.0	1,241.5	1,281.0	1,224.2	6.5	6.3	-72.28	194.3	262.9	69.5	57.6	11.89	5.842	SF	
1,400.0	1,328.0	1,378.3	1,305.0	7.5	7.4	-70.94	226.6	306.6	81.9	68.3	13.63	6.011		
1,500.0	1,414.5	1,474.8	1,382.2	8.4	8.5	-67.42	261.0	353.0	97.0	81.9	15.12	6.416		

Anticollision Report

Company:	EnCana Oil & Gas (USA) Inc	Local Co-ordinate Reference:	Well NP MF11E-3 004 696 (was 13A-3)
Project:	North Piceance	TVD Reference:	WELL @ 6044.0ft (Original Well Elev)
Reference Site:	004 696 (3rd)	MD Reference:	WELL @ 6044.0ft (Original Well Elev)
Site Error:	0.0ft	North Reference:	True
Reference Well:	NP MF11E-3 004 696 (was 13A-3)	Survey Calculation Method:	Minimum Curvature
Well Error:	0.0ft	Output errors are at	2.00 sigma
Reference Wellbore	DD	Database:	USA EDM 5000 US Multi Users DB
Reference Design:	Plan #2	Offset TVD Reference:	Offset Datum

Offset Design 004 696 (3rd) - NP MF11D-3 004 696 (was 14B-3) - DD - Plan #2													Offset Site Error:	0.0 ft
Survey Program: 0-MWD													Offset Well Error:	0.0 ft
Reference		Offset		Semi Major Axis		Highside Toolface (°)	Distance		Total Uncertainty Axis	Separation Factor	Warning			
Measured Depth (ft)	Vertical Depth (ft)	Measured Depth (ft)	Vertical Depth (ft)	Reference (ft)	Offset (ft)		Offset Wellbore Centre +N/-S (ft)	+E/-W (ft)						
0.0	0.0	0.0	0.0	0.0	0.0	59.37	11.1	18.8	21.8					
100.0	100.0	100.0	100.0	0.1	0.1	59.37	11.1	18.8	21.8	21.6	0.27	80.238		
200.0	200.0	200.0	200.0	0.3	0.3	59.37	11.1	18.8	21.8	21.2	0.62	35.160		
300.0	300.0	298.9	298.8	0.5	0.5	-6.36	12.4	21.0	21.8	20.9	0.97	22.555		
400.0	399.6	397.7	397.4	0.7	0.7	-8.14	16.2	27.7	21.8	20.5	1.31	16.587		
465.0	464.2	462.0	461.2	0.9	0.9	-9.93	20.1	34.4	21.8	20.2	1.54	14.105 CC		
500.0	498.8	496.6	495.4	1.0	1.0	-11.10	22.6	38.7	21.8	20.1	1.67	13.086		
600.0	597.1	595.5	592.7	1.4	1.3	-15.22	31.4	54.2	21.9	19.8	2.04	10.724		
700.0	694.3	694.3	688.8	1.8	1.8	-20.42	42.8	74.0	22.2	19.7	2.49	8.898		
800.0	790.2	793.2	783.7	2.4	2.3	-26.50	56.6	98.1	22.7	19.6	3.11	7.315 ES		
900.0	884.4	892.1	877.0	3.0	3.0	-33.17	72.9	126.4	23.7	19.7	4.01	5.921		
1,000.0	976.8	991.0	968.5	3.8	3.7	-40.06	91.5	158.8	25.2	20.0	5.27	4.791		
1,100.0	1,067.1	1,089.8	1,058.0	4.6	4.5	-46.78	112.5	195.4	27.3	20.4	6.90	3.959		
1,200.0	1,154.9	1,188.7	1,145.1	5.5	5.4	-53.04	135.7	235.8	30.0	21.1	8.87	3.383		
1,300.0	1,241.5	1,288.2	1,230.9	6.5	6.4	-56.69	160.9	279.7	34.0	23.2	10.79	3.150		
1,400.0	1,328.0	1,388.1	1,316.7	7.5	7.3	-59.18	186.3	324.0	38.2	25.6	12.68	3.016		
1,500.0	1,414.5	1,488.0	1,402.6	8.4	8.3	-61.17	211.7	368.2	42.6	28.0	14.59	2.918		
1,600.0	1,501.0	1,587.9	1,488.5	9.4	9.3	-62.79	237.1	412.5	46.9	30.4	16.50	2.844		
1,700.0	1,587.6	1,687.8	1,574.4	10.4	10.3	-64.14	262.5	456.7	51.3	32.9	18.42	2.787		
1,800.0	1,674.1	1,787.7	1,660.3	11.3	11.3	-65.27	287.9	501.0	55.7	35.4	20.33	2.741		
1,900.0	1,760.6	1,887.6	1,746.1	12.3	12.3	-66.23	313.3	545.2	60.2	37.9	22.25	2.704		
2,000.0	1,847.1	1,987.5	1,832.0	13.3	13.2	-67.07	338.7	589.5	64.6	40.5	24.16	2.674		
2,100.0	1,933.7	2,087.4	1,917.9	14.2	14.2	-67.79	364.1	633.8	69.1	43.0	26.08	2.649		
2,200.0	2,020.2	2,187.3	2,003.8	15.2	15.2	-68.43	389.5	678.0	73.6	45.6	28.00	2.627		
2,300.0	2,106.7	2,287.2	2,089.7	16.2	16.2	-68.99	414.9	722.3	78.0	48.1	29.91	2.609		
2,400.0	2,193.2	2,387.1	2,175.6	17.2	17.2	-69.49	440.3	766.5	82.5	50.7	31.83	2.593		
2,500.0	2,279.8	2,487.0	2,261.4	18.1	18.2	-69.95	465.7	810.8	87.0	53.3	33.74	2.579		
2,600.0	2,366.3	2,586.9	2,347.3	19.1	19.2	-70.35	491.1	855.0	91.5	55.9	35.66	2.566		
2,700.0	2,452.8	2,686.8	2,433.2	20.1	20.1	-70.72	516.5	899.3	96.0	58.4	37.57	2.556 SF		

Anticollision Report

Company:	EnCana Oil & Gas (USA) Inc	Local Co-ordinate Reference:	Well NP MF11E-3 O04 696 (was 13A-3)
Project:	North Piceance	TVD Reference:	WELL @ 6044.0ft (Original Well Elev)
Reference Site:	O04 696 (3rd)	MD Reference:	WELL @ 6044.0ft (Original Well Elev)
Site Error:	0.0ft	North Reference:	True
Reference Well:	NP MF11E-3 O04 696 (was 13A-3)	Survey Calculation Method:	Minimum Curvature
Well Error:	0.0ft	Output errors are at	2.00 sigma
Reference Wellbore	DD	Database:	USA EDM 5000 US Multi Users DB
Reference Design:	Plan #2	Offset TVD Reference:	Offset Datum

Offset Design O04 696 (3rd) - NP MF11G-3 O04 696 (was 14C-3) - DD - Plan #2													Offset Site Error:	0.0 ft
Survey Program: 0-MWD													Offset Well Error:	0.0 ft
Reference		Offset		Semi Major Axis			Distance						Warning	
Measured Depth (ft)	Vertical Depth (ft)	Measured Depth (ft)	Vertical Depth (ft)	Reference (ft)	Offset (ft)	Highside Toolface (°)	Offset Wellbore Centre +N/-S (ft)	+E/-W (ft)	Between Centres (ft)	Between Ellipses (ft)	Total Uncertainty Axis	Separation Factor		
0.0	0.0	0.0	0.0	0.0	0.0	-142.25	-6.1	-4.7	7.7					
100.0	100.0	100.0	100.0	0.1	0.1	-142.25	-6.1	-4.7	7.7	7.4	0.27	28.197		
200.0	200.0	200.0	200.0	0.3	0.3	-142.25	-6.1	-4.7	7.7	7.1	0.62	12.356 CC, ES		
300.0	300.0	300.0	300.0	0.5	0.5	159.45	-6.1	-4.7	10.1	9.1	0.97	10.378		
400.0	399.6	400.4	400.4	0.7	0.7	164.66	-5.4	-2.1	15.2	13.9	1.32	11.532		
500.0	498.8	501.1	500.7	1.0	0.9	164.59	-3.5	5.6	20.8	19.1	1.68	12.339		
600.0	597.1	602.0	600.8	1.4	1.2	162.50	-0.3	18.4	26.6	24.6	2.08	12.822		
700.0	694.3	703.2	700.2	1.8	1.5	159.53	4.2	36.4	32.9	30.3	2.54	12.951		
800.0	790.2	804.6	798.7	2.4	2.0	156.18	10.0	59.6	39.6	36.5	3.12	12.700		
900.0	884.4	906.1	896.0	3.0	2.5	152.71	17.1	87.8	46.8	42.9	3.86	12.121		
1,000.0	976.8	1,007.9	991.8	3.8	3.2	149.26	25.5	121.1	54.6	49.8	4.82	11.340		
1,100.0	1,067.1	1,109.8	1,085.7	4.6	3.9	145.91	35.0	159.3	63.0	57.0	6.01	10.495		
1,200.0	1,154.9	1,211.8	1,177.6	5.5	4.8	142.70	45.8	202.5	72.2	64.7	7.45	9.680		
1,300.0	1,241.5	1,313.5	1,266.6	6.5	5.8	138.78	57.7	249.9	80.2	71.0	9.22	8.692		
1,400.0	1,328.0	1,413.0	1,353.1	7.5	6.7	134.83	69.7	297.8	87.6	76.4	11.15	7.853		
1,500.0	1,414.5	1,512.6	1,439.6	8.4	7.7	131.50	81.7	345.7	95.3	82.2	13.13	7.263 SF		

Anticollision Report

Company:	EnCana Oil & Gas (USA) Inc	Local Co-ordinate Reference:	Well NP MF11E-3 O04 696 (was 13A-3)
Project:	North Piceance	TVD Reference:	WELL @ 6044.0ft (Original Well Elev)
Reference Site:	O04 696 (3rd)	MD Reference:	WELL @ 6044.0ft (Original Well Elev)
Site Error:	0.0ft	North Reference:	True
Reference Well:	NP MF11E-3 O04 696 (was 13A-3)	Survey Calculation Method:	Minimum Curvature
Well Error:	0.0ft	Output errors are at	2.00 sigma
Reference Wellbore	DD	Database:	USA EDM 5000 US Multi Users DB
Reference Design:	Plan #2	Offset TVD Reference:	Offset Datum

Offset Design O04 696 (3rd) - NP MF14A-3 O04 696 (was 13B-3) - DD - Plan #2													Offset Site Error:	0.0 ft
Survey Program: 0-MWD													Offset Well Error:	0.0 ft
Reference		Offset		Semi Major Axis			Distance							Warning
Measured Depth (ft)	Vertical Depth (ft)	Measured Depth (ft)	Vertical Depth (ft)	Reference (ft)	Offset (ft)	Highside Toolface (°)	Offset Wellbore Centre +N/-S (ft)	+E/-W (ft)	Between Centres (ft)	Between Ellipses (ft)	Total Uncertainty Axis	Separation Factor		
0.0	0.0	0.0	0.0	0.0	0.0	128.92	-5.1	6.3	8.1					
100.0	100.0	100.0	100.0	0.1	0.1	128.92	-5.1	6.3	8.1	7.8	0.27	29.579		
200.0	200.0	200.0	200.0	0.3	0.3	128.92	-5.1	6.3	8.1	7.4	0.62	12.962 CC, ES		
300.0	300.0	299.7	299.7	0.5	0.5	66.34	-4.6	8.8	8.6	7.6	0.98	8.787		
400.0	399.6	399.4	399.0	0.7	0.7	72.27	-3.3	16.5	10.4	9.0	1.41	7.420		
500.0	498.8	499.0	497.8	1.0	1.0	78.50	-1.1	29.3	13.6	11.7	1.96	6.948		
600.0	597.1	598.6	595.7	1.4	1.4	83.45	1.9	47.1	18.2	15.5	2.68	6.795		
700.0	694.3	698.0	692.4	1.8	1.8	86.98	5.8	69.9	24.2	20.6	3.58	6.758 SF		
800.0	790.2	797.4	787.7	2.4	2.4	89.41	10.6	97.6	31.5	26.9	4.67	6.759		
900.0	884.4	896.5	881.2	3.0	3.0	91.07	16.1	130.1	40.2	34.3	5.95	6.768		
1,000.0	976.8	995.5	972.7	3.8	3.7	92.21	22.5	167.2	50.2	42.8	7.42	6.773		
1,100.0	1,067.1	1,094.3	1,062.0	4.6	4.6	92.99	29.6	208.9	61.5	52.4	9.08	6.770		
1,200.0	1,154.9	1,192.9	1,148.8	5.5	5.5	93.52	37.5	255.0	74.0	63.0	10.94	6.758		
1,300.0	1,241.5	1,291.4	1,233.0	6.5	6.5	92.69	46.1	305.3	87.5	74.6	12.88	6.791		

Anticollision Report

Company:	EnCana Oil & Gas (USA) Inc	Local Co-ordinate Reference:	Well NP MF11E-3 O04 696 (was 13A-3)
Project:	North Piceance	TVD Reference:	WELL @ 6044.0ft (Original Well Elev)
Reference Site:	O04 696 (3rd)	MD Reference:	WELL @ 6044.0ft (Original Well Elev)
Site Error:	0.0ft	North Reference:	True
Reference Well:	NP MF11E-3 O04 696 (was 13A-3)	Survey Calculation Method:	Minimum Curvature
Well Error:	0.0ft	Output errors are at	2.00 sigma
Reference Wellbore	DD	Database:	USA EDM 5000 US Multi Users DB
Reference Design:	Plan #2	Offset TVD Reference:	Offset Datum

Offset Design												Offset Site Error:		0.0 ft
Survey Program: 0-MWD												Offset Well Error:		0.0 ft
Reference		Offset		Semi Major Axis			Distance							Warning
Measured Depth	Vertical Depth	Measured Depth	Vertical Depth	Reference	Offset	Highside Toolface	Offset Wellbore Centre		Between Centres	Between Ellipses	Total Uncertainty	Separation		
Depth (ft)	Depth (ft)	Depth (ft)	Depth (ft)	(ft)	(ft)	(°)	+N/-S (ft)	+E/-W (ft)	(ft)	(ft)	Axis	Factor		
0.0	0.0	0.0	0.0	0.0	0.0	171.99	-11.1	1.6	11.2					
100.0	100.0	100.0	100.0	0.1	0.1	171.99	-11.1	1.6	11.2	11.0	0.27	41.280		
200.0	200.0	200.0	200.0	0.3	0.3	171.99	-11.1	1.6	11.2	10.6	0.62	18.089 CC, ES		
300.0	300.0	299.9	299.9	0.5	0.5	106.40	-11.1	4.2	12.3	11.3	0.99	12.485		
400.0	399.6	399.8	399.4	0.7	0.7	105.40	-10.9	12.0	15.5	14.1	1.42	10.919		
500.0	498.8	499.5	498.2	1.0	1.0	104.39	-10.7	25.0	20.9	18.9	1.98	10.548		
600.0	597.1	599.0	596.1	1.4	1.4	103.57	-10.4	43.1	28.4	25.7	2.70	10.537 SF		
700.0	694.3	698.2	692.6	1.8	1.8	102.93	-10.0	66.2	38.0	34.4	3.58	10.613		
800.0	790.2	797.1	787.5	2.4	2.4	102.41	-9.4	94.1	49.7	45.1	4.65	10.691		
900.0	884.4	895.7	880.4	3.0	3.0	101.96	-8.8	126.8	63.4	57.5	5.90	10.750		
1,000.0	976.8	993.8	971.1	3.8	3.7	101.55	-8.2	164.1	79.1	71.8	7.33	10.785		
1,100.0	1,067.1	1,091.4	1,059.4	4.6	4.6	101.15	-7.4	205.8	96.7	87.8	8.96	10.800		

Anticollision Report

Company:	EnCana Oil & Gas (USA) Inc	Local Co-ordinate Reference:	Well NP MF11E-3 O04 696 (was 13A-3)
Project:	North Piceance	TVD Reference:	WELL @ 6044.0ft (Original Well Elev)
Reference Site:	O04 696 (3rd)	MD Reference:	WELL @ 6044.0ft (Original Well Elev)
Site Error:	0.0ft	North Reference:	True
Reference Well:	NP MF11E-3 O04 696 (was 13A-3)	Survey Calculation Method:	Minimum Curvature
Well Error:	0.0ft	Output errors are at	2.00 sigma
Reference Wellbore	DD	Database:	USA EDM 5000 US Multi Users DB
Reference Design:	Plan #2	Offset TVD Reference:	Offset Datum

Offset Design		O04 696 (3rd) - NP MF14D-3 O04 696 (was 19A-3) - DD - Plan #2											Offset Site Error:		0.0 ft			
Survey Program:		0-MWD													Offset Well Error:		0.0 ft	
Reference		Offset		Semi Major Axis			Distance											
Measured Depth	Vertical Depth	Measured Depth	Vertical Depth	Reference	Offset	Highside Toolface	Offset Wellbore Centre		Between Centres	Between Ellipses	Total Uncertainty Axis	Separation Factor	Warning					
(ft)	(ft)	(ft)	(ft)	(ft)	(ft)	(°)	+N/-S (ft)	+E/-W (ft)	(ft)	(ft)								
0.0	0.0	0.0	0.0	0.0	0.0	-140.96	-21.2	-17.2	27.4									
100.0	100.0	100.0	100.0	0.1	0.1	-140.96	-21.2	-17.2	27.4	27.1	0.27	100.477						
200.0	200.0	200.0	200.0	0.3	0.3	-140.96	-21.2	-17.2	27.4	26.7	0.62	44.029	CC, ES					
300.0	300.0	300.0	300.0	0.5	0.5	156.09	-21.2	-17.2	29.7	28.8	0.97	30.615						
400.0	399.6	400.8	400.8	0.7	0.7	157.77	-21.5	-14.6	35.4	34.0	1.33	26.582						
500.0	498.8	501.8	501.4	1.0	0.9	155.95	-22.1	-6.6	42.6	40.9	1.72	24.708						
600.0	597.1	602.8	601.5	1.4	1.2	152.27	-23.2	6.6	51.6	49.4	2.20	23.442						
700.0	694.3	703.6	700.6	1.8	1.5	147.84	-24.8	25.1	62.5	59.7	2.82	22.202						
800.0	790.2	804.3	798.4	2.4	2.0	143.33	-26.7	48.7	75.7	72.1	3.62	20.900						
900.0	884.4	904.6	894.5	3.0	2.5	139.07	-29.1	77.3	91.2	86.6	4.64	19.654	SF					

Anticollision Report

Company:	EnCana Oil & Gas (USA) Inc	Local Co-ordinate Reference:	Well NP MF11E-3 O04 696 (was 13A-3)
Project:	North Piceance	TVD Reference:	WELL @ 6044.0ft (Original Well Elev)
Reference Site:	O04 696 (3rd)	MD Reference:	WELL @ 6044.0ft (Original Well Elev)
Site Error:	0.0ft	North Reference:	True
Reference Well:	NP MF11E-3 O04 696 (was 13A-3)	Survey Calculation Method:	Minimum Curvature
Well Error:	0.0ft	Output errors are at	2.00 sigma
Reference Wellbore	DD	Database:	USA EDM 5000 US Multi Users DB
Reference Design:	Plan #2	Offset TVD Reference:	Offset Datum

Offset Design O04 696 (3rd) - NP MF14E-3 O04 696 (was 19B-3) - DD - Plan #2													Offset Site Error:	0.0 ft
Survey Program: 0-MWD													Offset Well Error:	0.0 ft
Reference		Offset		Semi Major Axis			Distance							Warning
Measured Depth	Vertical Depth	Measured Depth	Vertical Depth	Reference	Offset	Highside Toolface	Offset Wellbore Centre		Between Centres	Between Ellipses	Total Uncertainty Axis	Separation Factor		
(ft)	(ft)	(ft)	(ft)	(ft)	(ft)	(°)	+N/-S (ft)	+E/-W (ft)	(ft)	(ft)				
0.0	0.0	0.0	0.0	0.0	0.0	-157.37	-26.3	-11.0	28.5					
100.0	100.0	100.0	100.0	0.1	0.1	-157.37	-26.3	-11.0	28.5	28.2	0.27	104.678		
200.0	200.0	200.0	200.0	0.3	0.3	-157.37	-26.3	-11.0	28.5	27.9	0.62	45.870	CC, ES	
300.0	300.0	300.2	300.1	0.5	0.5	135.87	-27.0	-8.4	30.1	29.1	0.98	30.624		
400.0	399.6	400.1	399.8	0.7	0.7	131.91	-29.1	-0.9	35.0	33.6	1.40	24.944		
500.0	498.8	499.7	498.5	1.0	1.0	127.31	-32.5	11.7	43.4	41.5	1.94	22.437		
600.0	597.1	598.7	595.8	1.4	1.4	123.20	-37.2	29.1	55.4	52.8	2.61	21.205		
700.0	694.3	697.0	691.4	1.8	1.8	119.90	-43.2	51.1	71.0	67.6	3.46	20.551		
800.0	790.2	794.4	784.9	2.4	2.3	117.32	-50.4	77.6	90.1	85.6	4.46	20.182	SF	

Anticollision Report

Company:	EnCana Oil & Gas (USA) Inc	Local Co-ordinate Reference:	Well NP MF11E-3 O04 696 (was 13A-3)
Project:	North Piceance	TVD Reference:	WELL @ 6044.0ft (Original Well Elev)
Reference Site:	O04 696 (3rd)	MD Reference:	WELL @ 6044.0ft (Original Well Elev)
Site Error:	0.0ft	North Reference:	True
Reference Well:	NP MF11E-3 O04 696 (was 13A-3)	Survey Calculation Method:	Minimum Curvature
Well Error:	0.0ft	Output errors are at	2.00 sigma
Reference Wellbore	DD	Database:	USA EDM 5000 US Multi Users DB
Reference Design:	Plan #2	Offset TVD Reference:	Offset Datum

Offset Design O04 696 (3rd) - NP MF15A-4 O04 696 (was 11D-3) - DD - Plan #2													Offset Site Error:	0.0 ft
Survey Program: 0-MWD													Offset Well Error:	0.0 ft
Reference		Offset		Semi Major Axis			Distance						Warning	
Measured Depth (ft)	Vertical Depth (ft)	Measured Depth (ft)	Vertical Depth (ft)	Reference (ft)	Offset (ft)	Highside Toolface (°)	Offset Wellbore Centre +N/-S (ft)	+E/-W (ft)	Between Centres (ft)	Between Ellipses (ft)	Total Uncertainty Axis	Separation Factor		
0.0	0.0	0.0	0.0	0.0	0.0	37.75	16.2	12.5	20.5					
100.0	100.0	100.0	100.0	0.1	0.1	37.75	16.2	12.5	20.5	20.2	0.27	75.193		
200.0	200.0	200.0	200.0	0.3	0.3	37.75	16.2	12.5	20.5	19.9	0.62	32.950		
300.0	300.0	299.3	299.2	0.5	0.5	-36.85	18.7	11.8	20.0	19.0	0.98	20.448		
318.9	318.9	318.0	317.9	0.5	0.5	-40.85	19.7	11.5	19.9	18.9	1.05	18.973 CC, ES		
400.0	399.6	397.8	397.5	0.7	0.7	-64.21	26.0	9.7	21.7	20.4	1.36	15.920 SF		
500.0	498.8	495.1	493.9	1.0	1.0	-91.99	38.0	6.2	32.3	30.5	1.83	17.659		
600.0	597.1	590.4	587.7	1.4	1.3	-107.32	54.4	1.5	52.6	50.2	2.40	21.972		
700.0	694.3	684.2	679.1	1.8	1.7	-115.03	74.6	-4.4	80.5	77.5	3.05	26.379		

Anticollision Report

Company:	EnCana Oil & Gas (USA) Inc	Local Co-ordinate Reference:	Well NP MF11E-3 O04 696 (was 13A-3)
Project:	North Piceance	TVD Reference:	WELL @ 6044.0ft (Original Well Elev)
Reference Site:	O04 696 (3rd)	MD Reference:	WELL @ 6044.0ft (Original Well Elev)
Site Error:	0.0ft	North Reference:	True
Reference Well:	NP MF11E-3 O04 696 (was 13A-3)	Survey Calculation Method:	Minimum Curvature
Well Error:	0.0ft	Output errors are at	2.00 sigma
Reference Wellbore	DD	Database:	USA EDM 5000 US Multi Users DB
Reference Design:	Plan #2	Offset TVD Reference:	Offset Datum

Offset Design O04 696 (3rd) - NP MF15D-4 O04 696 (was 01B-9) - DD - Plan #2													Offset Site Error: 0.0 ft
Survey Program: 0-MWD													Offset Well Error: 0.0 ft
Reference		Offset		Semi Major Axis			Distance						
Measured Depth (ft)	Vertical Depth (ft)	Measured Depth (ft)	Vertical Depth (ft)	Reference (ft)	Offset (ft)	Highside Toolface (°)	Offset Wellbore Centre +N/-S (ft)	+E/-W (ft)	Between Centres (ft)	Between Ellipses (ft)	Total Uncertainty Axis	Separation Factor	Warning
0.0	0.0	0.0	0.0	0.0	0.0	-141.83	-65.8	-51.7	83.7				
100.0	100.0	100.0	100.0	0.1	0.1	-141.83	-65.8	-51.7	83.7	83.4	0.27	307.241	
200.0	200.0	200.0	200.0	0.3	0.3	-141.83	-65.8	-51.7	83.7	83.0	0.62	134.634 CC, ES	
300.0	300.0	300.0	300.0	0.5	0.5	153.79	-65.8	-51.7	86.0	85.0	0.97	88.528	
400.0	399.6	398.1	398.1	0.7	0.7	156.70	-65.4	-53.3	93.9	92.6	1.32	70.950 SF	

Anticollision Report

Company:	EnCana Oil & Gas (USA) Inc	Local Co-ordinate Reference:	Well NP MF11E-3 O04 696 (was 13A-3)
Project:	North Piceance	TVD Reference:	WELL @ 6044.0ft (Original Well Elev)
Reference Site:	O04 696 (3rd)	MD Reference:	WELL @ 6044.0ft (Original Well Elev)
Site Error:	0.0ft	North Reference:	True
Reference Well:	NP MF11E-3 O04 696 (was 13A-3)	Survey Calculation Method:	Minimum Curvature
Well Error:	0.0ft	Output errors are at	2.00 sigma
Reference Wellbore	DD	Database:	USA EDM 5000 US Multi Users DB
Reference Design:	Plan #2	Offset TVD Reference:	Offset Datum

Offset Design													Offset Site Error:		0.0 ft
Survey Program: 0-MWD													Offset Well Error:		0.0 ft
Reference		Offset		Semi Major Axis			Distance							Warning	
Measured Depth	Vertical Depth	Measured Depth	Vertical Depth	Reference	Offset	Highside Toolface	Offset Wellbore Centre +N/-S	+E/-W	Between Centres	Between Ellipses	Total Uncertainty Axis	Separation Factor			
(ft)	(ft)	(ft)	(ft)	(ft)	(ft)	(°)	(ft)	(ft)	(ft)	(ft)					
0.0	0.0	0.0	0.0	0.0	0.0	-146.90	-76.9	-50.1	91.8						
100.0	100.0	100.0	100.0	0.1	0.1	-146.90	-76.9	-50.1	91.8	91.5	0.27	337.140			
200.0	200.0	200.0	200.0	0.3	0.3	-146.90	-76.9	-50.1	91.8	91.2	0.62	147.736 CC, ES			
300.0	300.0	295.9	295.9	0.5	0.5	147.93	-79.3	-50.2	96.1	95.2	0.97	99.396 SF			

Anticollision Report

Company:	EnCana Oil & Gas (USA) Inc	Local Co-ordinate Reference:	Well NP MF11E-3 O04 696 (was 13A-3)
Project:	North Piceance	TVD Reference:	WELL @ 6044.0ft (Original Well Elev)
Reference Site:	O04 696 (3rd)	MD Reference:	WELL @ 6044.0ft (Original Well Elev)
Site Error:	0.0ft	North Reference:	True
Reference Well:	NP MF11E-3 O04 696 (was 13A-3)	Survey Calculation Method:	Minimum Curvature
Well Error:	0.0ft	Output errors are at	2.00 sigma
Reference Wellbore	DD	Database:	USA EDM 5000 US Multi Users DB
Reference Design:	Plan #2	Offset TVD Reference:	Offset Datum

Offset Design O04 696 (3rd) - NP MF19A-3 O04 696 (was 17B-4) - DD - Plan #2													Offset Site Error: 0.0 ft
Survey Program: 0-MWD													Offset Well Error: 0.0 ft
Reference		Offset		Semi Major Axis			Distance						Warning
Measured Depth (ft)	Vertical Depth (ft)	Measured Depth (ft)	Vertical Depth (ft)	Reference (ft)	Offset (ft)	Highside Toolface (°)	Offset Wellbore Centre +N/-S (ft)	+E/-W (ft)	Between Centres (ft)	Between Ellipses (ft)	Total Uncertainty Axis	Separation Factor	
0.0	0.0	0.0	0.0	0.0	0.0	-142.25	-28.3	-21.9	35.8				
100.0	100.0	100.0	100.0	0.1	0.1	-142.25	-28.3	-21.9	35.8	35.6	0.27	131.588	
200.0	200.0	200.0	200.0	0.3	0.3	-142.25	-28.3	-21.9	35.8	35.2	0.62	57.662 CC, ES	
300.0	300.0	300.2	300.2	0.5	0.5	153.44	-28.6	-21.3	38.0	37.0	0.97	39.064	
400.0	399.6	400.6	400.4	0.7	0.7	151.32	-30.6	-16.5	43.6	42.3	1.35	32.325	
500.0	498.8	500.6	499.9	1.0	0.9	146.89	-34.7	-6.8	52.7	50.9	1.80	29.308	
600.0	597.1	600.0	598.1	1.4	1.2	141.84	-40.8	7.5	65.7	63.4	2.38	27.673	
700.0	694.3	698.5	694.4	1.8	1.6	137.13	-48.7	26.4	82.8	79.7	3.11	26.616 SF	

Anticollision Report

Company:	EnCana Oil & Gas (USA) Inc	Local Co-ordinate Reference:	Well NP MF11E-3 O04 696 (was 13A-3)
Project:	North Piceance	TVD Reference:	WELL @ 6044.0ft (Original Well Elev)
Reference Site:	O04 696 (3rd)	MD Reference:	WELL @ 6044.0ft (Original Well Elev)
Site Error:	0.0ft	North Reference:	True
Reference Well:	NP MF11E-3 O04 696 (was 13A-3)	Survey Calculation Method:	Minimum Curvature
Well Error:	0.0ft	Output errors are at	2.00 sigma
Reference Wellbore	DD	Database:	USA EDM 5000 US Multi Users DB
Reference Design:	Plan #2	Offset TVD Reference:	Offset Datum

Offset Design													O04 696 (3rd) - NP MF19C-3 O04 696 (was 20B-3) - DD - Plan #2		Offset Site Error:		0.0 ft	
Survey Program:													0-MWD		Offset Well Error:		0.0 ft	
Reference		Offset		Semi Major Axis			Distance							Warning				
Measured Depth (ft)	Vertical Depth (ft)	Measured Depth (ft)	Vertical Depth (ft)	Reference (ft)	Offset (ft)	Highside Toolface (°)	Offset Wellbore Centre +N/-S (ft)	+E/-W (ft)	Between Centres (ft)	Between Ellipses (ft)	Total Uncertainty Axis	Separation Factor						
0.0	0.0	0.0	0.0	0.0	0.0	-154.86	-33.4	-15.7	36.9									
100.0	100.0	100.0	100.0	0.1	0.1	-154.86	-33.4	-15.7	36.9	36.6	0.27	135.459						
200.0	200.0	200.0	200.0	0.3	0.3	-154.86	-33.4	-15.7	36.9	36.3	0.62	59.358	CC, ES					
300.0	300.0	299.8	299.7	0.5	0.5	138.61	-34.7	-13.4	39.1	38.2	0.98	39.867						
400.0	399.6	399.2	398.8	0.7	0.7	135.27	-38.6	-6.7	46.0	44.6	1.40	32.941						
500.0	498.8	497.9	496.7	1.0	1.0	131.44	-45.1	4.3	57.6	55.7	1.91	30.181						
600.0	597.1	595.6	592.8	1.4	1.3	128.05	-54.1	19.5	74.0	71.5	2.55	29.046						
700.0	694.3	692.0	686.6	1.8	1.8	125.30	-65.3	38.7	95.2	91.8	3.33	28.590	SF					

Anticollision Report

Company:	EnCana Oil & Gas (USA) Inc	Local Co-ordinate Reference:	Well NP MF11E-3 O04 696 (was 13A-3)
Project:	North Piceance	TVD Reference:	WELL @ 6044.0ft (Original Well Elev)
Reference Site:	O04 696 (3rd)	MD Reference:	WELL @ 6044.0ft (Original Well Elev)
Site Error:	0.0ft	North Reference:	True
Reference Well:	NP MF11E-3 O04 696 (was 13A-3)	Survey Calculation Method:	Minimum Curvature
Well Error:	0.0ft	Output errors are at	2.00 sigma
Reference Wellbore	DD	Database:	USA EDM 5000 US Multi Users DB
Reference Design:	Plan #2	Offset TVD Reference:	Offset Datum

Offset Design		O04 696 (3rd) - NP MF19D-3 O04 696 (was 19C-3) - DD - Plan #2										Offset Site Error:		0.0 ft			
Survey Program:		0-MWD												Offset Well Error:		0.0 ft	
Reference		Offset		Semi Major Axis			Distance										
Measured Depth	Vertical Depth	Measured Depth	Vertical Depth	Reference	Offset	Highside Toolface	Offset Wellbore Centre		Between Centres	Between Ellipses	Total Uncertainty Axis	Separation Factor	Warning				
(ft)	(ft)	(ft)	(ft)	(ft)	(ft)	(°)	+N/-S (ft)	+E/-W (ft)	(ft)	(ft)							
0.0	0.0	0.0	0.0	0.0	0.0	-141.62	-43.5	-34.5	55.5								
100.0	100.0	100.0	100.0	0.1	0.1	-141.62	-43.5	-34.5	55.5	55.2	0.27	203.855					
200.0	200.0	200.0	200.0	0.3	0.3	-141.62	-43.5	-34.5	55.5	54.9	0.62	89.330	CC, ES				
300.0	300.0	300.0	300.0	0.5	0.5	154.38	-43.5	-34.5	57.9	56.9	0.97	59.563					
400.0	399.6	399.6	399.6	0.7	0.7	156.72	-43.9	-34.0	65.0	63.7	1.32	49.081					
500.0	498.8	498.8	498.7	1.0	0.8	156.56	-47.5	-30.2	77.1	75.4	1.70	45.336					
600.0	597.1	597.3	596.6	1.4	1.1	154.47	-54.4	-22.8	94.1	92.0	2.14	44.065	SF				

Anticollision Report

Company:	EnCana Oil & Gas (USA) Inc	Local Co-ordinate Reference:	Well NP MF11E-3 O04 696 (was 13A-3)
Project:	North Piceance	TVD Reference:	WELL @ 6044.0ft (Original Well Elev)
Reference Site:	O04 696 (3rd)	MD Reference:	WELL @ 6044.0ft (Original Well Elev)
Site Error:	0.0ft	North Reference:	True
Reference Well:	NP MF11E-3 O04 696 (was 13A-3)	Survey Calculation Method:	Minimum Curvature
Well Error:	0.0ft	Output errors are at	2.00 sigma
Reference Wellbore	DD	Database:	USA EDM 5000 US Multi Users DB
Reference Design:	Plan #2	Offset TVD Reference:	Offset Datum

Offset Design O04 696 (3rd) - NP MF19E-3 O04 696 (was 19D-3) - DD - Plan #2													Offset Site Error:	0.0 ft
Survey Program: 0-MWD													Offset Well Error:	0.0 ft
Reference		Offset		Semi Major Axis			Distance						Warning	
Measured Depth (ft)	Vertical Depth (ft)	Measured Depth (ft)	Vertical Depth (ft)	Reference (ft)	Offset (ft)	Highside Toolface (°)	Offset Wellbore Centre +N/-S (ft)	+E/-W (ft)	Between Centres (ft)	Between Ellipses (ft)	Total Uncertainty Axis	Separation Factor		
0.0	0.0	0.0	0.0	0.0	0.0	-149.86	-48.6	-28.2	56.2					
100.0	100.0	100.0	100.0	0.1	0.1	-149.86	-48.6	-28.2	56.2	55.9	0.27	206.260		
200.0	200.0	200.0	200.0	0.3	0.3	-149.86	-48.6	-28.2	56.2	55.5	0.62	90.384 CC, ES		
300.0	300.0	299.6	299.5	0.5	0.5	143.90	-50.1	-26.1	58.6	57.7	0.98	59.806		
400.0	399.6	398.7	398.3	0.7	0.7	141.09	-54.8	-20.0	66.2	64.8	1.39	47.630		
500.0	498.8	497.0	495.8	1.0	1.0	137.58	-62.5	-9.9	78.9	77.0	1.89	41.821		
600.0	597.1	594.0	591.2	1.4	1.3	134.17	-73.1	4.0	96.9	94.4	2.50	38.757 SF		

Anticollision Report

Company:	EnCana Oil & Gas (USA) Inc	Local Co-ordinate Reference:	Well NP MF11E-3 O04 696 (was 13A-3)
Project:	North Piceance	TVD Reference:	WELL @ 6044.0ft (Original Well Elev)
Reference Site:	O04 696 (3rd)	MD Reference:	WELL @ 6044.0ft (Original Well Elev)
Site Error:	0.0ft	North Reference:	True
Reference Well:	NP MF11E-3 O04 696 (was 13A-3)	Survey Calculation Method:	Minimum Curvature
Well Error:	0.0ft	Output errors are at	2.00 sigma
Reference Wellbore	DD	Database:	USA EDM 5000 US Multi Users DB
Reference Design:	Plan #2	Offset TVD Reference:	Offset Datum

Offset Design O04 696 (3rd) - NP MF20F-3 O04 696 (was 20D-3) - DD - Plan #2													Offset Site Error: 0.0 ft
Survey Program: 0-MWD													Offset Well Error: 0.0 ft
Reference		Offset		Semi Major Axis			Distance						Warning
Measured Depth (ft)	Vertical Depth (ft)	Measured Depth (ft)	Vertical Depth (ft)	Reference (ft)	Offset (ft)	Highside Toolface (°)	Offset Wellbore Centre +N/-S (ft)	+E/-W (ft)	Between Centres (ft)	Between Ellipses (ft)	Total Uncertainty Axis	Separation Factor	
0.0	0.0	0.0	0.0	0.0	0.0	-148.95	-54.6	-32.9	63.8				
100.0	100.0	100.0	100.0	0.1	0.1	-148.95	-54.6	-32.9	63.8	63.5	0.27	234.239	
200.0	200.0	200.0	200.0	0.3	0.3	-148.95	-54.6	-32.9	63.8	63.2	0.62	102.644 CC, ES	
300.0	300.0	299.0	298.9	0.5	0.5	145.00	-56.5	-31.2	66.7	65.7	0.98	68.156	
400.0	399.6	397.4	397.0	0.7	0.7	142.67	-62.2	-26.0	75.5	74.1	1.38	54.705	
500.0	498.8	494.7	493.5	1.0	1.0	139.77	-71.4	-17.6	90.3	88.4	1.86	48.560 SF	

Anticollision Report

Company:	EnCana Oil & Gas (USA) Inc	Local Co-ordinate Reference:	Well NP MF11E-3 O04 696 (was 13A-3)
Project:	North Piceance	TVD Reference:	WELL @ 6044.0ft (Original Well Elev)
Reference Site:	O04 696 (3rd)	MD Reference:	WELL @ 6044.0ft (Original Well Elev)
Site Error:	0.0ft	North Reference:	True
Reference Well:	NP MF11E-3 O04 696 (was 13A-3)	Survey Calculation Method:	Minimum Curvature
Well Error:	0.0ft	Output errors are at	2.00 sigma
Reference Wellbore	DD	Database:	USA EDM 5000 US Multi Users DB
Reference Design:	Plan #2	Offset TVD Reference:	Offset Datum

Reference Depths are relative to WELL @ 6044.0ft (Original Well Elev)

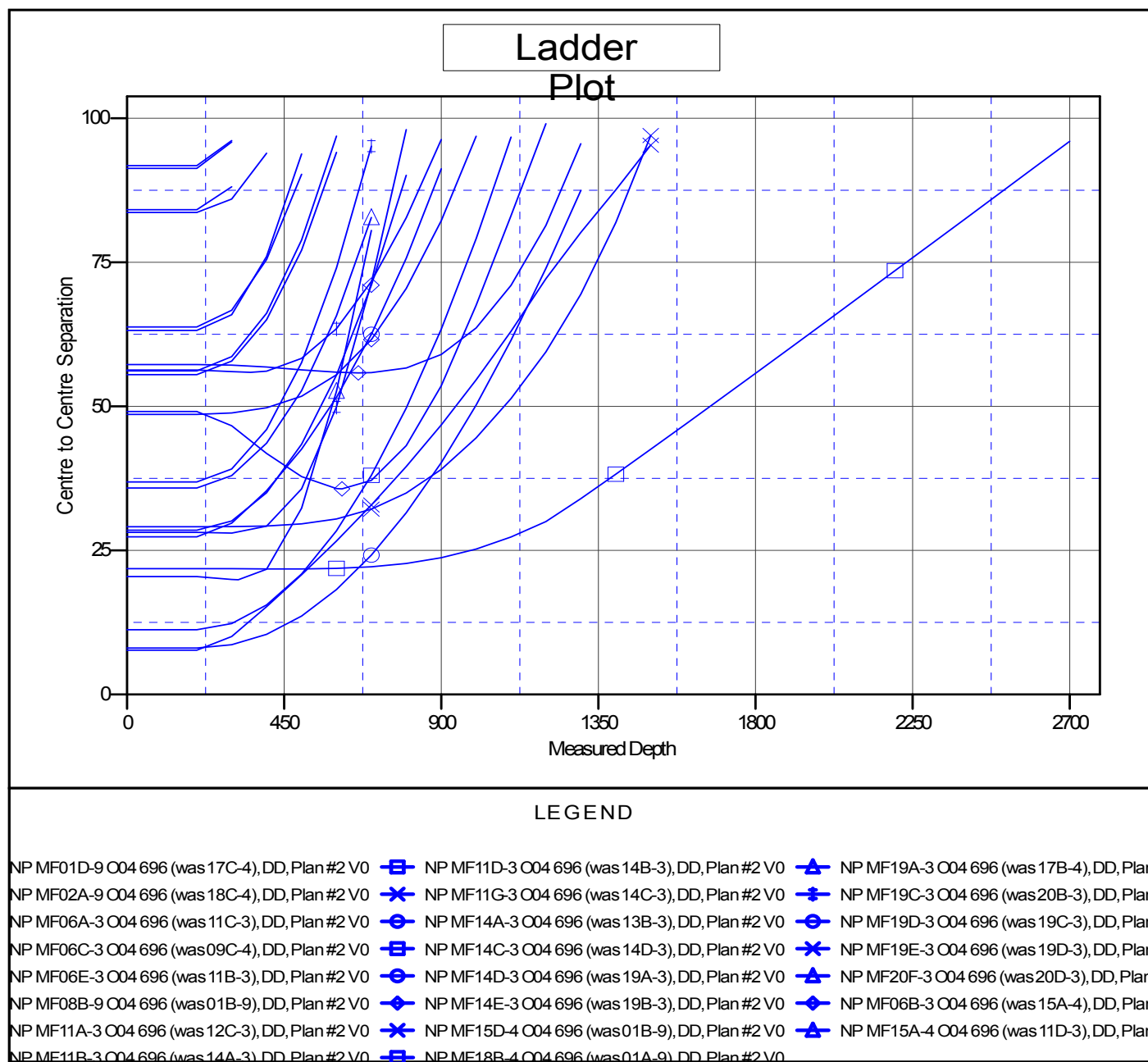
Offset Depths are relative to Offset Datum

Central Meridian is 105° 30' 0.00 W °

Coordinates are relative to: NP MF11E-3 O04 696 (was 13A-3)

Coordinate System is US State Plane 1983, Colorado Central Zone

Grid Convergence at Surface is: -1.64°



CC - Min centre to center distance or convergent point, SF - min separation factor, ES - min ellipse separation